



# ALTOS P550 F4 BMC Firmware Update User Guide

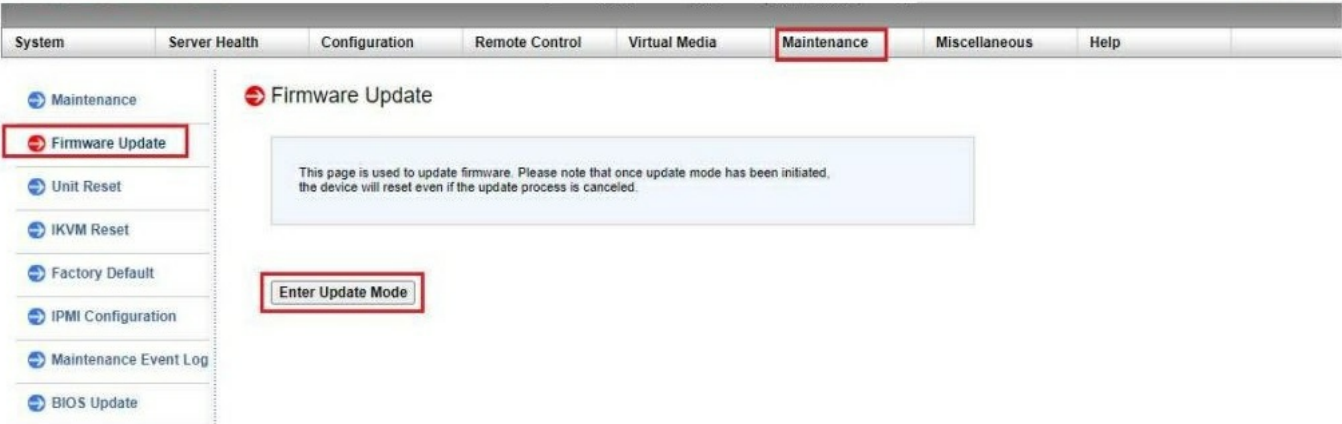
[Home](#) » [Altos](#) » ALTOS P550 F4 BMC Firmware Update User Guide 

## Contents

- 1 ALTOS P550 F4 BMC Firmware Update
- 2 Product Information
- 3 Product Usage Instructions
- 4 Connections
- 5 BMC Firmware Update
- 6 Documents / Resources
  - 6.1 References



## ALTOS P550 F4 BMC Firmware Update



## Product Information

The BMC Firmware Update feature allows users to update the firmware of their Altos Computing Inc. server's Baseboard Management Controller (BMC) using the BMC Web Console. Altos Computing Inc. is a subsidiary of

Acer.

## Specifications

- **Manufacturer:** Altos Computing Inc.
- **Product Type:** Server

## FAQ

- **Q:** How can I find more information about Altos products and solutions?
  - **A:** You can visit the Altos website at <https://www.altoscomputing.com/en-US> for more information.

## Product Usage Instructions

### Section 1: Connect to Remote Laptop

1. Connect an Ethernet cable to a remote laptop computer.
2. Power on the system and press the [Del] key to enter the BIOS Setup Utility.
3. Go to the [Server Mgmt] tab and select the [BMC network Configuration] item.
4. Press the [Enter] key to configure the address source and change it to the [Static] option. Alternatively, you can use a DHCP server to assign an IPv4 address automatically.

### Section 2: Access BMC Web Console

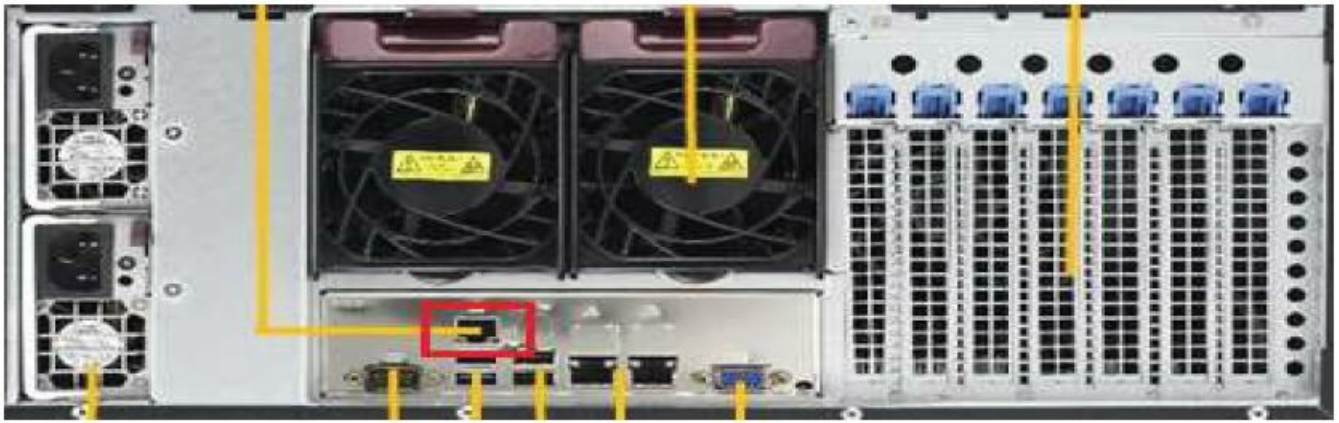
1. Enter the IP address in the browser's web address field on the remote laptop computer.
2. Ignore any security certificate warnings and proceed to the website.
3. You will see the IPMI logon webpage. This will allow you to link to the BMC web UI.

### Section 3: BMC Firmware Update

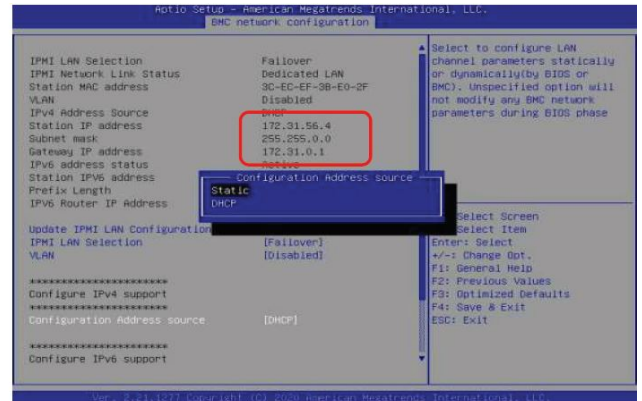
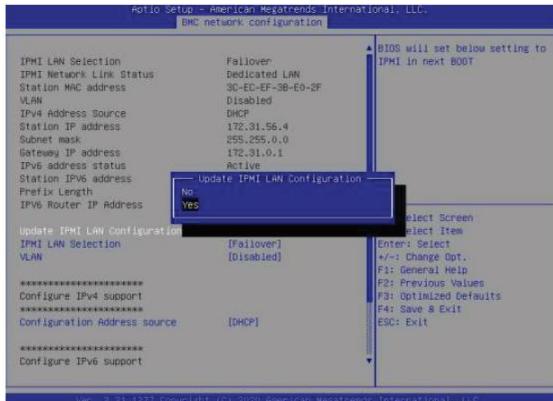
1. Login to the BMC web UI using the default username and password: root / superuser.
2. Open the Maintenance Page and select the Firmware Update page.
3. Press the "Enter Update Mode" button to start updating the BMC firmware.
4. Press "Choose File" to select the BMC firmware file (xxxxx.bin) and then press "Open" to upload it.
5. Click "Preserve all preserve items" and press "Start Upgrade" to begin flashing the BMC firmware.
6. Wait for the upgrade progress to reach 100% and the BMC will be reset.
7. Wait for 1 minute and you will be redirected to the login page.

## Connections

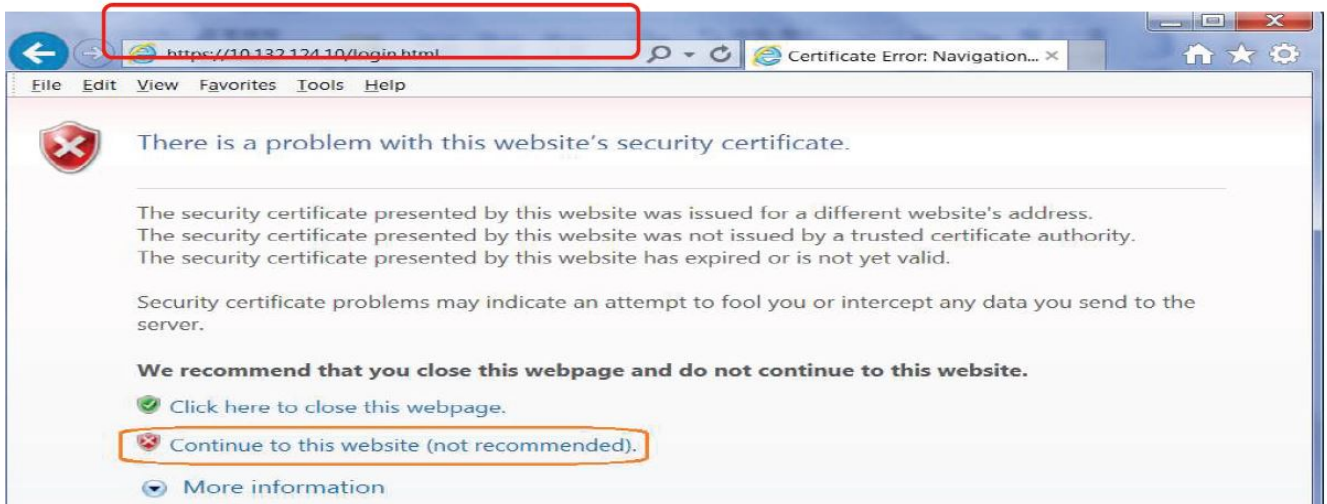
**Connect an Ethernet cable to a remote laptop computer likes below image**



- Connect an Ethernet cable to the BMC dedicated LAN port



- Power on the system, and press [Del] key to enter BIOS Setup Utility. Go to the [Server Mgmt ] tab and select [BMC network Configuration] item.
- Press the [Enter] key to “configuration address source” and change to [Static] option.
- Or you can use a DHCP server to assign an IP4 address automatically and see the IP4 address here



- Enter the IP address in browser's web address field in the remote laptop computer. You will see a “There is a problem with this website's security certificate” webpage. Click on [Continue to this website (not recommended)]. Afterwards, you will see the IPMI logon webpage. This will allow you to link to the BMC web UI .

## BMC Firmware Update

# ALTOS

Please Login

Username

Password

Login

- Go to the BMC Login web UI ,the default user name and password is for user : root password :superuser , after entering the username and password, click on the “Login” button.

ALTOS

Host Identification  
Server: 172.016.168.126  
User: root (Administrator)

System Server Health Configuration Remote Control Virtual Media **Maintenance** Miscellaneous Help

Maintenance

**Firmware Update**

Unit Reset  
IKVM Reset  
Factory Default  
IPMI Configuration  
Maintenance Event Log  
BIOS Update

Firmware Update

This page is used to update firmware. Please note that once update mode has been initiated, the device will reset even if the update process is canceled.

Enter Update Mode

- Open Maintenance Page , select the firmware Update page
  - Press “Enter Update Mode” button to start to update the BMC firmware.

The device is now in upgrade mode. Please wait until the percentage of the Firmware Image burning reaches 100 percent. After that, please wait for the system to reboot. The web page will redirect to the Login page automatically.

Select Firmware to Upload:

**Choose File** No file chosen

Upload Firmware Cancel

開啟

« BMC » altos » T350671.III

搜尋 T350671.III

組合管理 新增資料夾

名稱	修改日期	類型
AdUpdate.exe	2016/9/7 下午 03:21	應用程式
altos.bat	2020/11/2 下午 01:09	Windows 批次檔
<b>T671_III.bin</b>	2020/10/14 上午 09:19	BIN 檔案

- Press “Choose File” to select the BMC firmware, xxxxx.bin. Then press Open to upload the BMC firmware.

Server Health Configuration Remote Control Virtual Media Maintenance Miscellaneous Help

### Firmware Upload

Upgradeable Modules

Module Name	Existing Version	New Version
IPMI_FW	06.71.11	06.71.11

☒ Preserve Configuration (Unchecking this option will restore the BMC's factory default setting.)  
☒ Preserve SDR (Unchecking this option will restore the SDR defaults.)  
☒ Preserve SSL certificate (Unchecking this option will restore the default SSL certificate.)

Start Upgrade Cancel

- Click "Preserve" all preserve items. And press "Start Upgrade" to start to flash BMC firmware

ALTOS

System Server Health Configuration Remote Control Maintenance Miscellaneous Help

192.168.100.52 says  
Upgrade complete: Please wait for 1 minute

OK

LOADING...

Firmware Upload

The device is now in upgrade mode. Please wait until the percentage of the Firmware Image burning reaches 100 percent. After that, please wait for the system to reboot. The web page will redirect to the Login page automatically.

Upgrade progress : 100%

- After BMC firmware update finished, it will show upgrade progress 100%
  - And the BMC will be reset. Please wait for 1 minute and will return to the login page


## The Best is Yet To Come

- For more information about Altos product and solution
- Please visit Altos website (welcome scan QR code or use URL) <https://www.altoscomputing.com/en-US>



Altos Computing Inc. is a subsidiary of Acer  
Copyright © 2021 Altos Computing Inc.

## Documents / Resources

	<p><a href="#">ALTOS P550 F4 BMC Firmware Update</a> [pdf] User Guide</p> <p>P550 F4, P550 F4 BMC Firmware Update, P550 F4, BMC Firmware Update, Firmware Update, Update</p>
---	--

## References

- [ALTOS](#)
- [User Manual](#)