



ALTOS BMC Firmware Update User Guide

[Home](#) » [Altos](#) » ALTOS BMC Firmware Update User Guide 

Contents

- [1 ALTOS BMC Firmware Update](#)
- [2 STEPS](#)
- [3 BMC Firmware Update](#)
- [4 Documents / Resources](#)
 - [4.1 References](#)
- [5 Related Posts](#)



ALTOS BMC Firmware Update

Web Console Update

BMC Firmware Update From
BMC Web Console



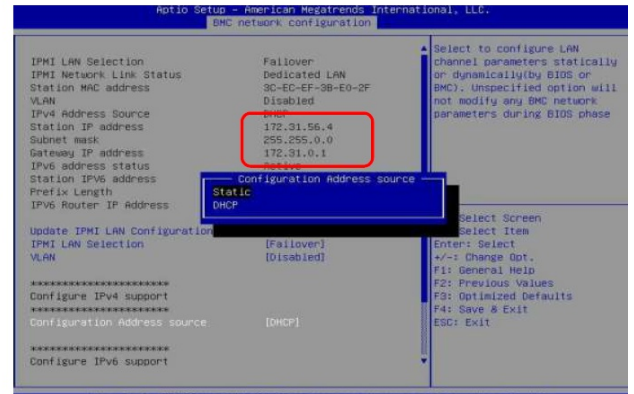
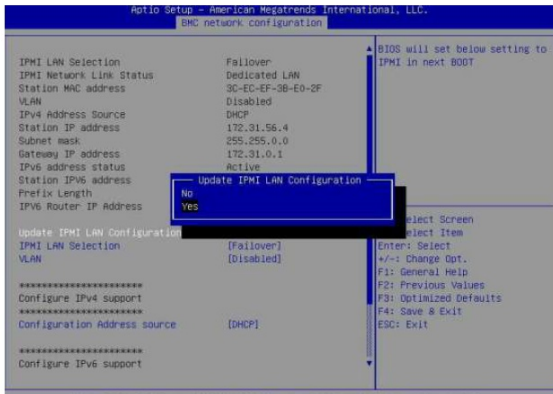
STEPS

Connect an Ethernet cable to a remote NB like below the image

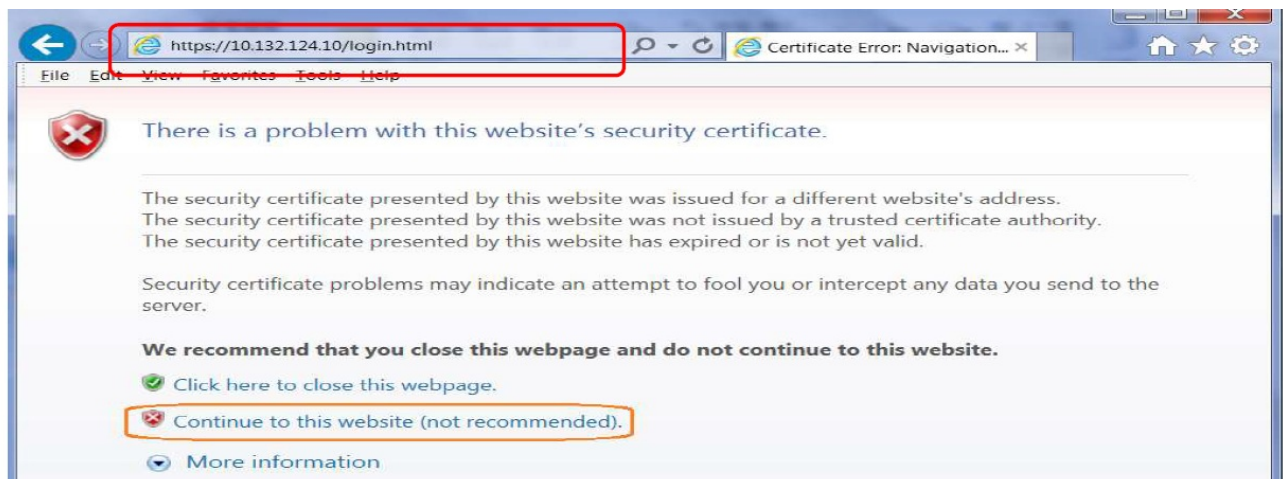
- Connect an Ethernet cable to the BMC dedicated LAN port



- Power on the system, and press [Del] key to enter BIOS Setup Utility. Go to the [Server Mgmt] tab and select [BMC network Configuration] item.



- Press the [Enter] key to “configuration address source” and change to [Static] option.
- Or you can use a DHCP server to assign an IP4 address automatically and see the IP4 address here.
- Enter the IP address in browser’s web address field in the remote NB. You will see a “There is a problem with this website’s security certificate” webpage. Click on [Continue to this website (not recommended)]. Afterwards, you will see the IPMI login webpage. This will allow you to link to the BMC web UI .



BMC Firmware Update

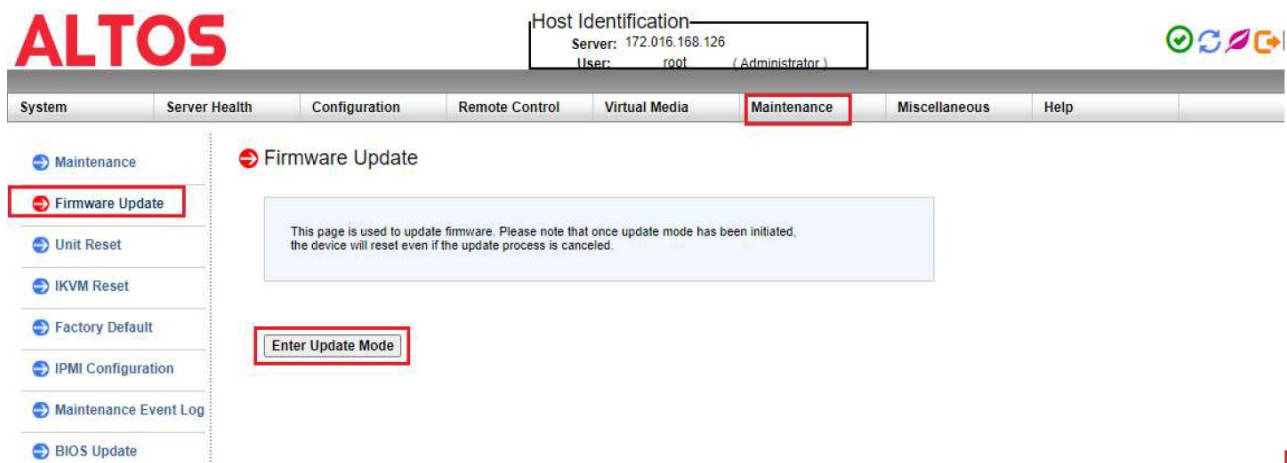
- Go to the BMC Login web UI ,the default user name and password is for user = root , password = Superuser@123 , after entering the user name and pass word, click on the Login button.

Please Login

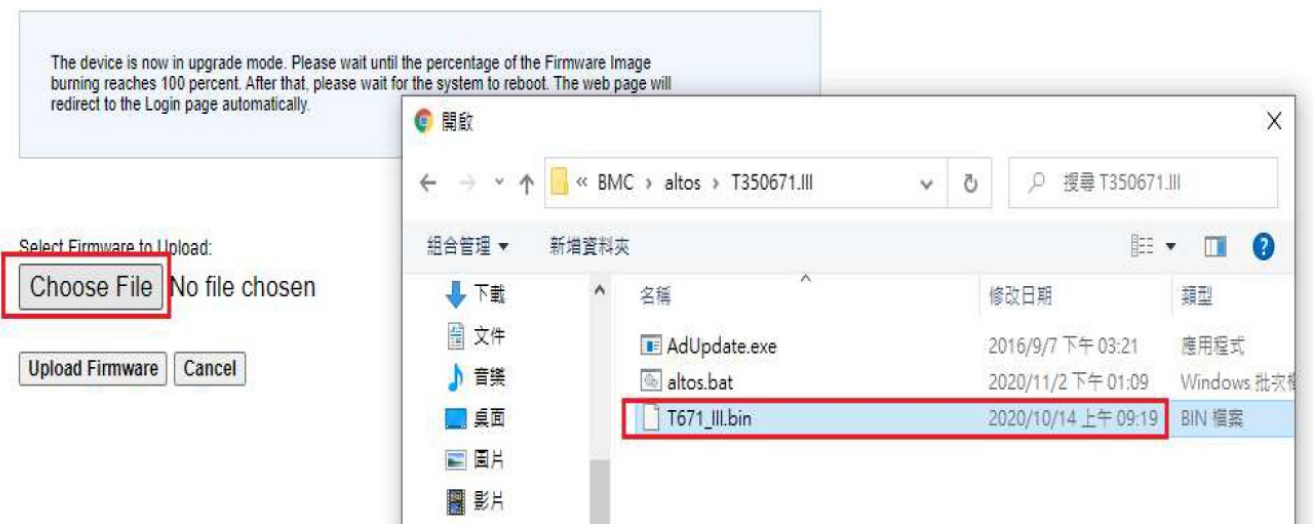
Username

Password

- Open Maintenance Page , select the firmware Update page Press “Enter Update Mode” button to start to update the BMC firmware.



- Press “Choose File” to select the BMC firmware, xxxxx.bin. Then press Open to upload the BMC firmware.



- Click “Preserve” all preserve items. And press “Start Upgrade” to start to flash BMC firmware

Server Health

Configuration

Remote Control

Virtual Media

Maintenance

Miscellaneous

Help

Firmware Upload

Upgradeable Modules

Module Name	Existing Version	New Version
IPMI_FW	06.71.11	06.71.11

☒ Preserve Configuration (Unchecking this option will restore the BMC's factory default setting.)
 ☒ Preserve SDR (Unchecking this option will restore the SDR defaults.)
 ☒ Preserve SSL certificate (Unchecking this option will restore the default SSL certificate.)

Start Upgrade

Cancel

- After BMC firmware update finished, it will show upgrade progress 100% And the BMC will be reset. Please wait for 1 minute and will return to the login page

ALTOS

System

Server Health

Configuration

Remote Control

Help

192.168.100.52 says

Upgrade complete: Please wait for 1 minute

OK

Firmware Upload

The device is now in upgrade mode. Please wait until the percentage of the Firmware image burning reaches 100 percent. After that, please wait for the system to reboot. The web page will redirect to the Login page automatically.

Upgrade progress : 100%

The Best is Yet To Come

For more information about Altos product and solution. Please visit Altos website (welcome scan QR code or use URL) <https://www.altoscomputing.com/en-US>



Altos Computing Inc. is a subsidiary of Acer.

Documents / Resources

	ALTOS BMC Firmware Update [pdf] User Guide BMC Firmware Update, BMC, Firmware Update, Update
--	---

References

