



ALTA WINDOW FASHIONS BLISS Automation Changing Wi-Fi Networks User Guide

[Home](#) » [ALTA WINDOW FASHIONS](#) » ALTA WINDOW FASHIONS BLISS Automation Changing Wi-Fi Networks User Guide

Contents [[hide](#)]

- [1 ALTA WINDOW FASHIONS BLISS Automation Changing Wi-Fi Networks](#)
- [2 Changing Wi-Fi Networks](#)
- [3 Documents / Resources](#)
- [4 Related Posts](#)



ALTA WINDOW FASHIONS BLISS Automation Changing Wi-Fi Networks

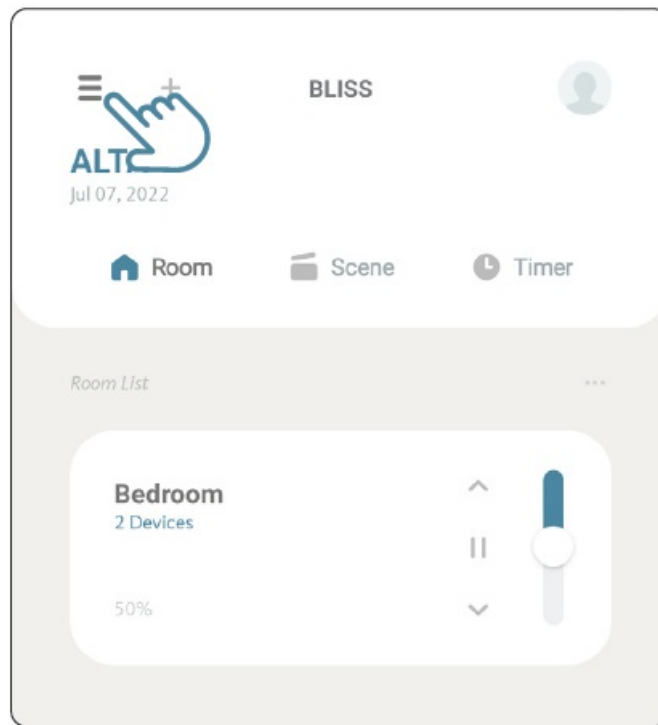


Changing Wi-Fi Networks

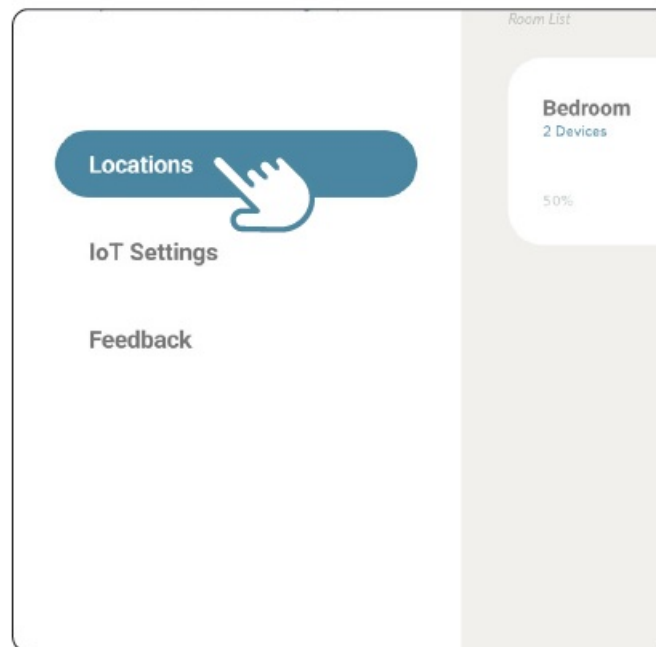
Getting Started

Be sure that your device is connected to the Wi-Fi network you are moving the bridge to

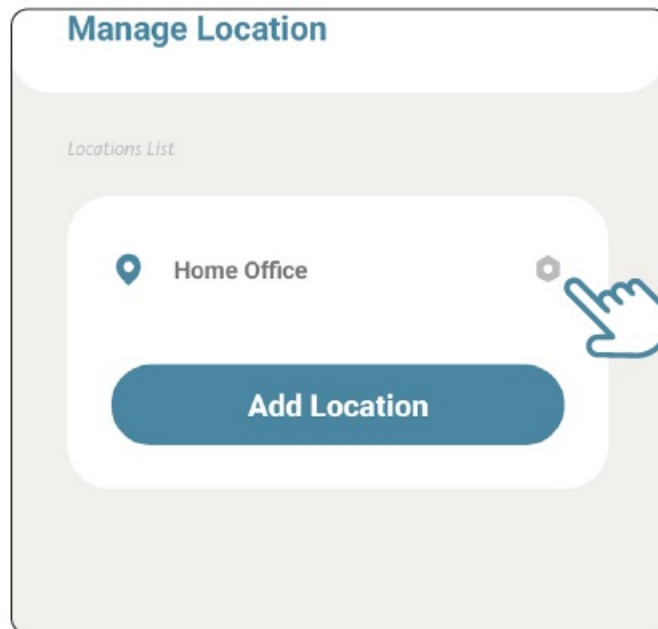
1. Tap the three lines in the top left corner of the screen



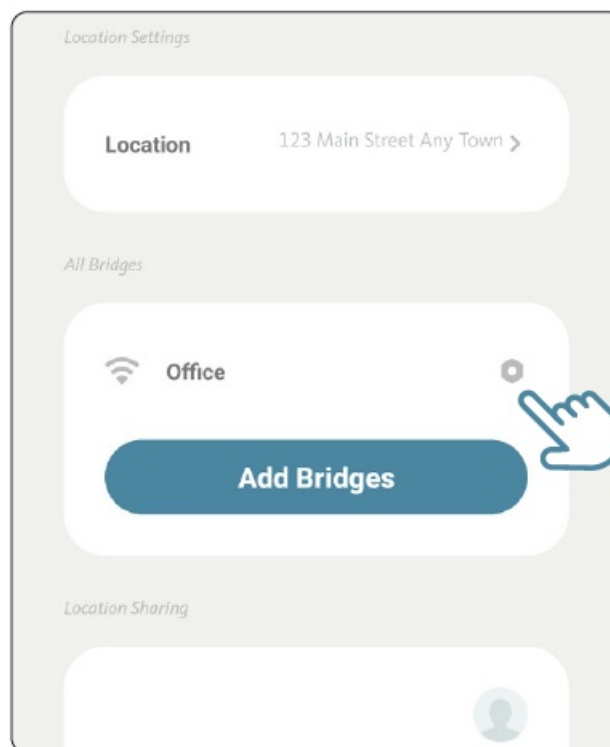
2. Tap the "Locations" option for the menu



3. Tap the Settings icon (nut) next to your listed location



4. Tap the setting icon (nut) next to the bridge you would like to change



5. Tap the “Update Wi-Fi” option in the middle of the screen

Name

Office

Wireless

Update WiFi WiFi Network Name >

Bridge Settings

Location Home Office


Mac Address 8caab5ca74e6


Firmware Settings

6. Select the correct Wi-Fi network from the list of options

<

Set Up WiFi – Step 1

WiFi Network Name 

WiFi Network Name 

7. Enter the password for the Wi-Fi network and press “Connect”

<

Set Up WiFi – Step 2

Wi-Fi Network Name

Wi-Fi Network Password

Connect

8. Press and hold the button on the Bliss Bridge until the light starts flashing purple, about 2 seconds, then tap “Next”



Set Up WiFi – Step 3

Set to Linking mode

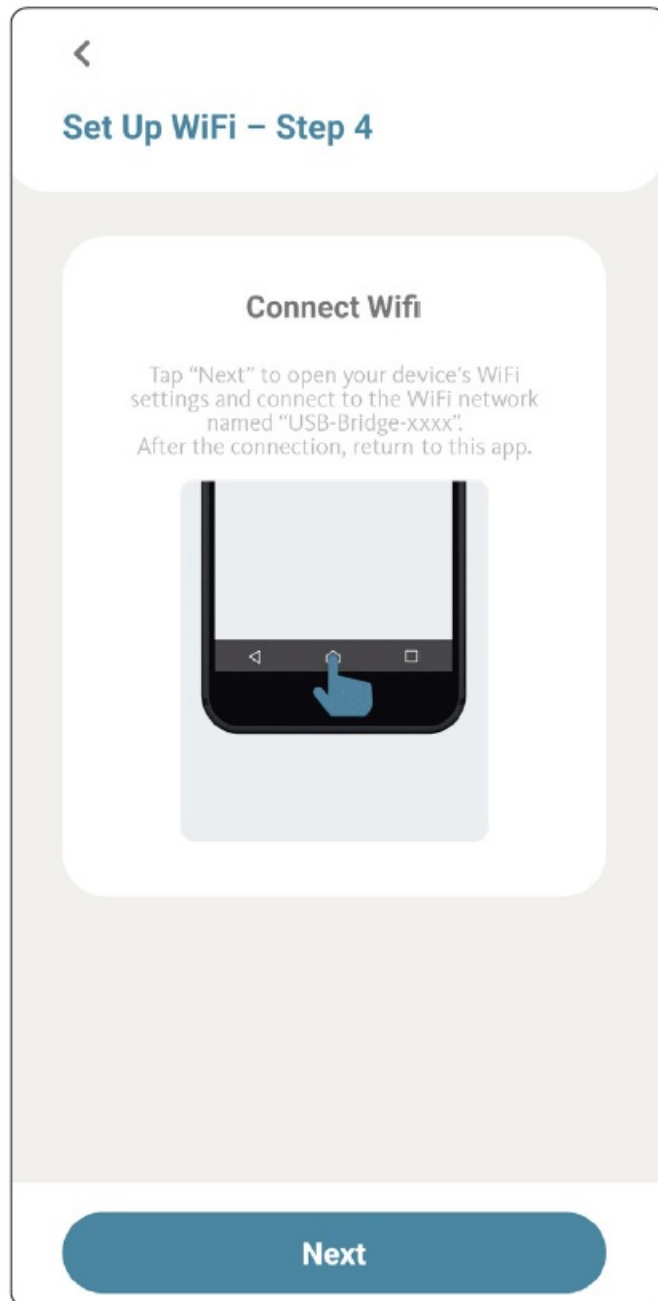
Power on the BLISS Bridge (LED flashing red).
Press and hold the Programming button for 2 seconds (LED flashing purple).
The Bridge is now in linking mode.



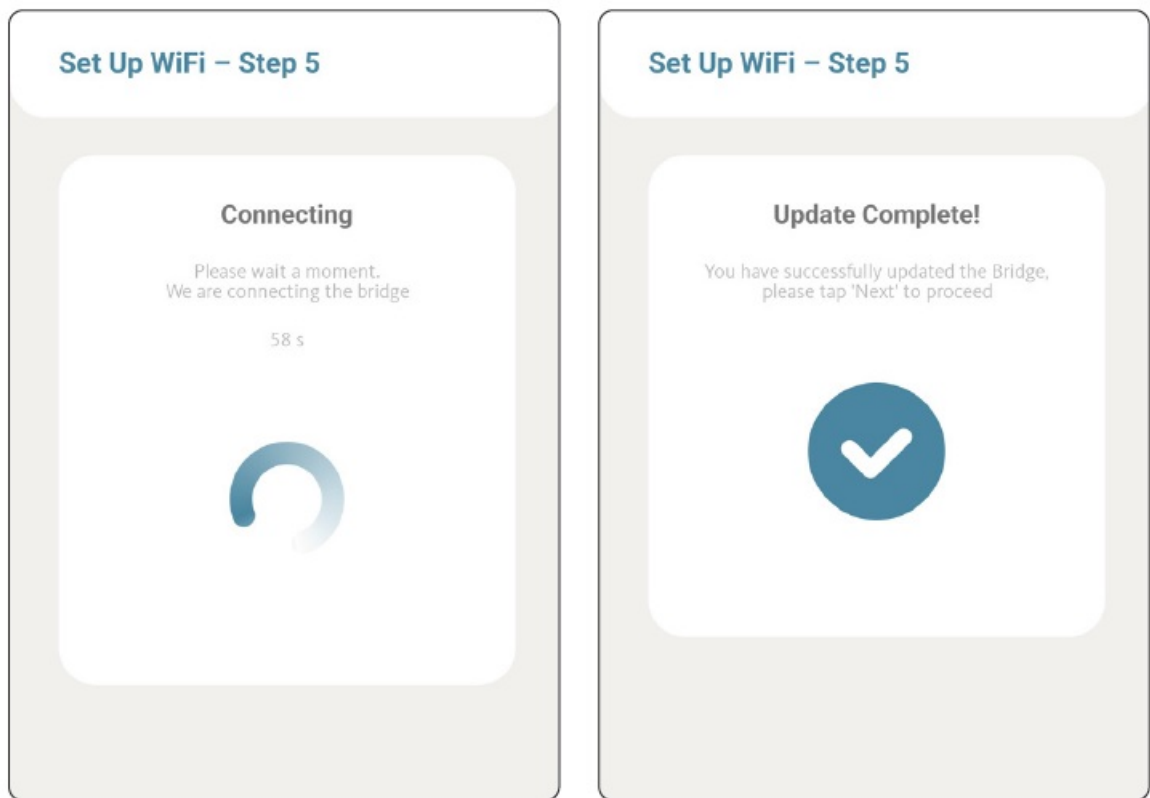
Next



9. On the next screen tap “Next” to open your phone’s Wi-Fi settings




10. Connect to the network named "USB-Bridge-xxxx" or something similar
11. Once connected, open your already running apps and return to the Bliss app. You will see the Bridge attempting to pair to the new network



Your bridge has now been paired to the new Wi-Fi network

Documents / Resources

	<p>ALTA WINDOW FASHIONS BLISS Automation Changing Wi-Fi Networks [pdf] User Guide BLISS Automation Changing Wi-Fi Networks, Changing Wi-Fi Networks, Wi-Fi Networks, BLIS S Automation</p>
---	--