




ALPSALPINE DM-65C-G Component Speaker System User Guide

[Home](#) » [ALPSALPINE](#) » ALPSALPINE DM-65C-G Component Speaker System User Guide 

ALPSALPINE DM-65C-G Component Speaker System User Guide

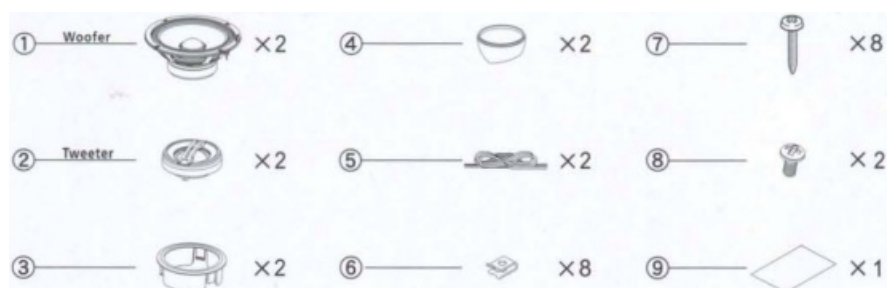


Contents

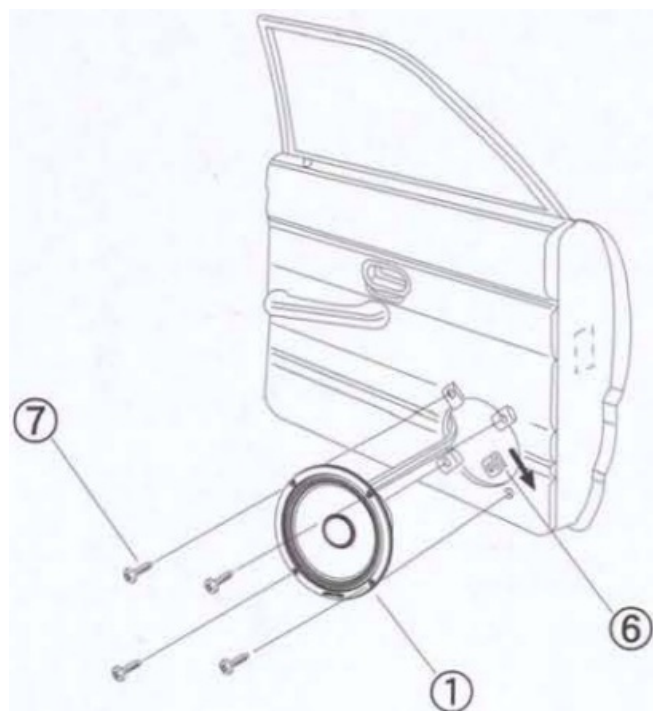
- [1 Using Instruction](#)
- [2 SPECIFICATIONS](#)
- [3 Documents / Resources](#)
 - [3.1 References](#)
- [4 Related Posts](#)

Using Instruction

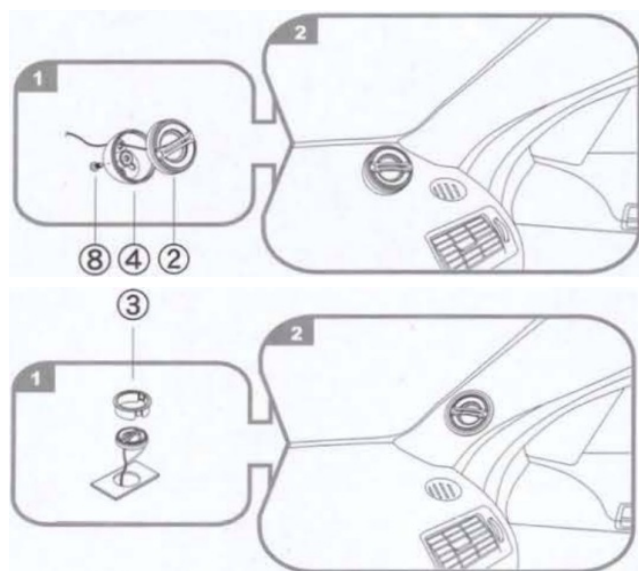
CONTENTS



WOOFER INSTALLATION

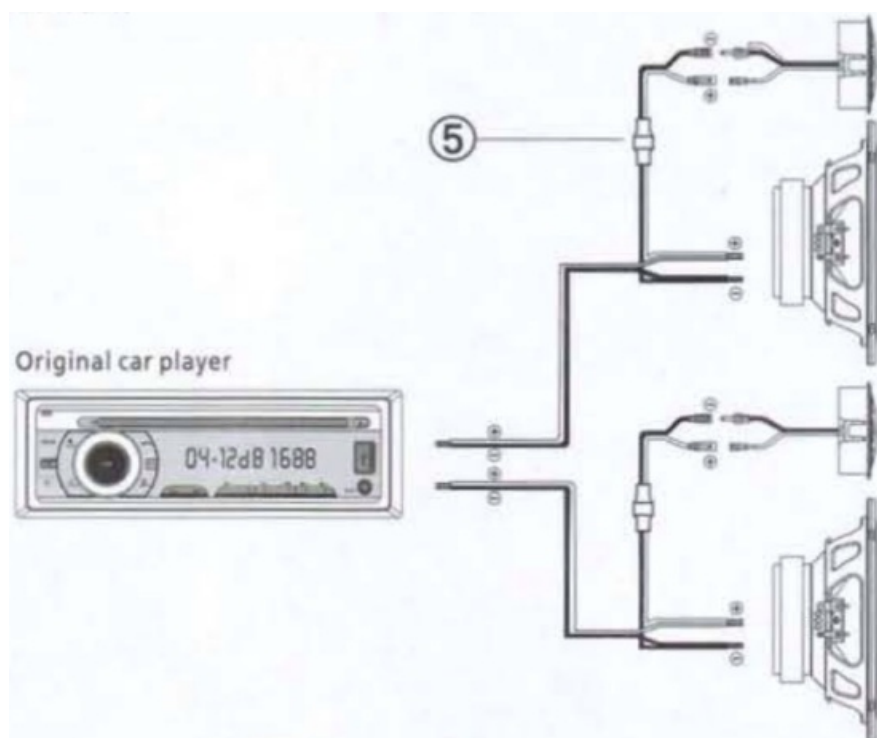


TWEETER INSTALLATION



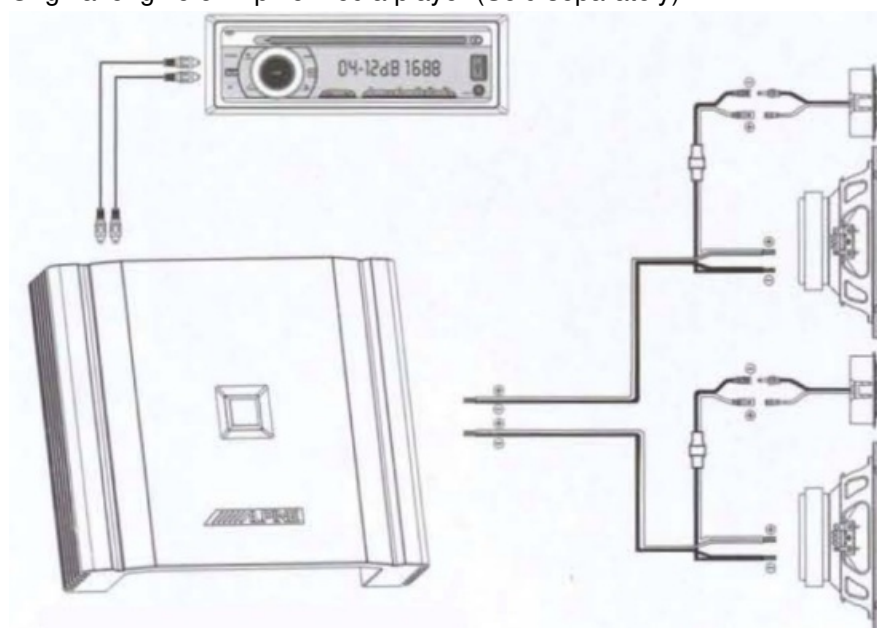
WIRING WIRING CONNECTION

Connection diagram of original car player



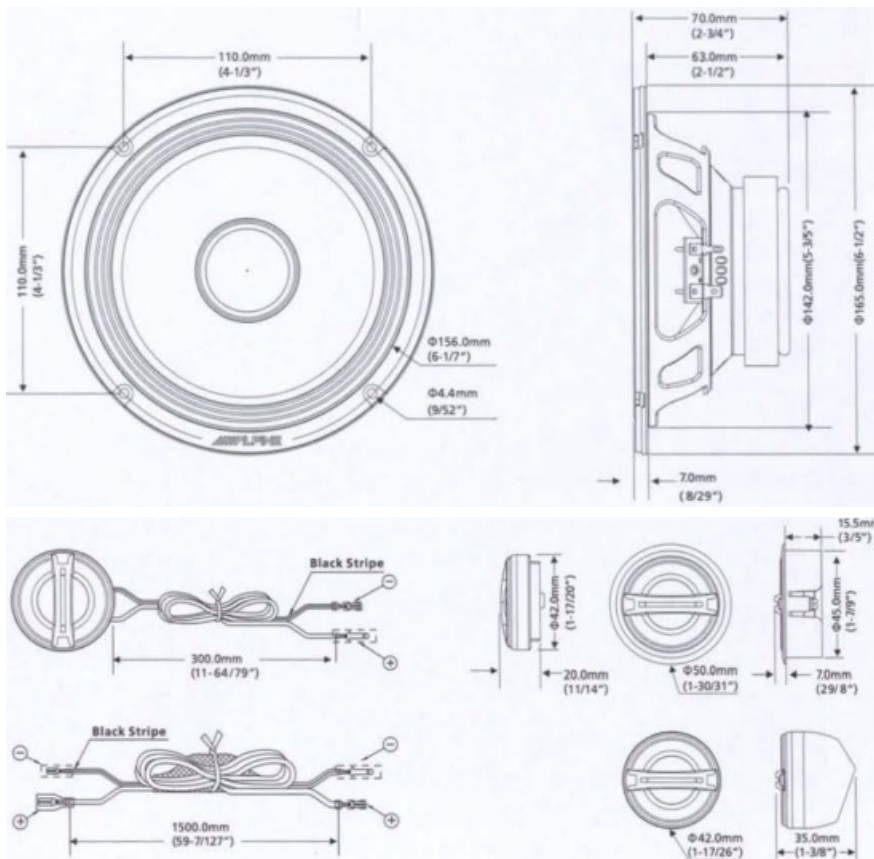
Schematic diagram of power amplifier connection

Original engine or Alpine Media player (Sold separately)



External power amplifier (Sold separately)

EXTERNAL DIMENSIONS



SPECIFICATIONS

- **Units Type:**
- **Woofers :** 6.5" (16.5cm) PP Cone
- **Tweeter :** 0.8" (2.0cm) Teteron Dome
- **Maximum RMS Power :** 50W
- **Maximum Peak Power :** 200W
- **Impedance :** 4ohms (DCR3.6ohms)
- **Sensitivity :** 92dB SPL (1W @ 1m)
- **Frequency Response :** 65Hz-20KHz
- **Mounting Depth/Droyal-in Mounting :** 2-1/2"(6.3cm)
- **Cutout Diameter :** 5-3/5" (14.2cm)circle
- Design and specifications are subject to change without notice

Warning

Th is product contains a high performance tweeter.

If there is a tweeter already installed in your car. then you must disconnect its terminals.

If you leave the original tweeter connected and connect this product in parallel, then a fault may develop in this product, so you are strongly recommended not to do so.

COMPONENT 2-WAY SPEAKER SYSTEM



Documents / Resources



[ALPSALPINE DM-65C-G Component Speaker System](#) [pdf] User Guide

DM-65C-G Component Speaker System, DM-65C-G, Component Speaker System, Speaker System, System

References

- [User Manual](#)

[Manuals+](#), [Privacy Policy](#)

This website is an independent publication and is neither affiliated with nor endorsed by any of the trademark owners. The "Bluetooth®" word mark and logos are registered trademarks owned by Bluetooth SIG, Inc. The "Wi-Fi®" word mark and logos are registered trademarks owned by the Wi-Fi Alliance. Any use of these marks on this website does not imply any affiliation with or endorsement.