

ALPS ALPINE PSS-TSLA Intros Audio System For TeslaPSS-TSLA Intros Audio System For Tesla



ALPS ALPINE PSS-TSLA Intros Audio System For TeslaPSS-TSLA Intros Audio System For Tesla Installation Guide

[Home](#) » [ALPS ALPINE](#) » ALPS ALPINE PSS-TSLA Intros Audio System For TeslaPSS-TSLA Intros Audio System For Tesla Installation Guide 

Contents

- [1 ALPS ALPINE PSS-TSLA Intros Audio System For TeslaPSS-TSLA Intros Audio System For Tesla](#)
- [2 Important Notice](#)
- [3 Tesla Model 3/Y Power UP & Down Procedure](#)
- [4 Installation Instructions](#)
- [5 Power Harness](#)
- [6 Dashboard Speaker Installation](#)
- [7 Front Door Speaker Installation](#)
- [8 Documents / Resources](#)
 - [8.1 References](#)
- [9 Related Posts](#)



ALPS ALPINE PSS-TSLA Intros Audio System For TeslaPSS-TSLA Intros Audio System For Tesla



Important Notice

WARNING: This aftermarket plug-and-play audio system for Tesla vehicles ("Product") is intended for installation by qualified professionals with experience in automotive electrical systems. Improper installation can result in serious damage to your vehicle, electrical system, and personal injury or death. By purchasing and/or installing this Product, you acknowledge and agree to the following:

- Installation at your own risk: You assume all responsibility and risk associated with the installation of this Product. Neither Alps Alpine North America, Inc. nor its affiliates are responsible for any damage or injury caused by improper installation.
- The installation of this product requires specialized skills and experience. We recommend that you have the product installed by an Alpine-authorized dealer
- Potential for electrical damage: Improper installation can cause electrical damage to your Tesla vehicle, including, but not limited to, blown fuses, shorts, fires, and damage to sensitive electronic components and batteries.
- No warranty for improper installation: This Product's warranty is expressly limited to manufacturing defects and does not cover any damage caused by improper installation.
- ASSUMPTION OF RISK: YOU ACKNOWLEDGE AND AGREE THAT YOU ARE KNOWINGLY ASSUMING THE RISK OF DAMAGE TO YOUR TESLA VEHICLE AND/OR PERSONAL INJURY OR DEATH BY INSTALLING THIS PRODUCT YOURSELF AND
- INSTALLING THIS PRODUCT MAY AFFECT OR RESULT IN THE TERMINATION OF YOUR LIMITED WARRANTY WITH TESLA.
- LIMITATION OF LIABILITY: TO THE FULLEST EXTENT PERMITTED BY LAW, ALPS ALPINE NORTH AMERICA, INC. AND ITS AFFILIATES SHALL NOT BE LIABLE FOR ANY DIRECT, INDIRECT, INCIDENTAL, CONSEQUENTIAL, OR PUNITIVE
- DAMAGES ARISING OUT OF OR RELATED TO THE INSTALLATION OR USE OF THIS PRODUCT, INCLUDING, BUT NOT LIMITED TO, DAMAGE TO YOUR TESLA VEHICLE, PERSONAL INJURY, PROPERTY DAMAGE, OR RENDERING YOUR LIMITED WARRANTY INEFFECTIVE.

We strongly recommend consulting your Tesla owner's manual or qualified professional for specific installation instructions. We recommend reviewing all online resources and tutorials available for your specific Tesla model before attempting installation. If you are unsure about any aspect of the installation process, please consult a qualified professional.

Tesla Model 3/Y Power UP & Down Procedure

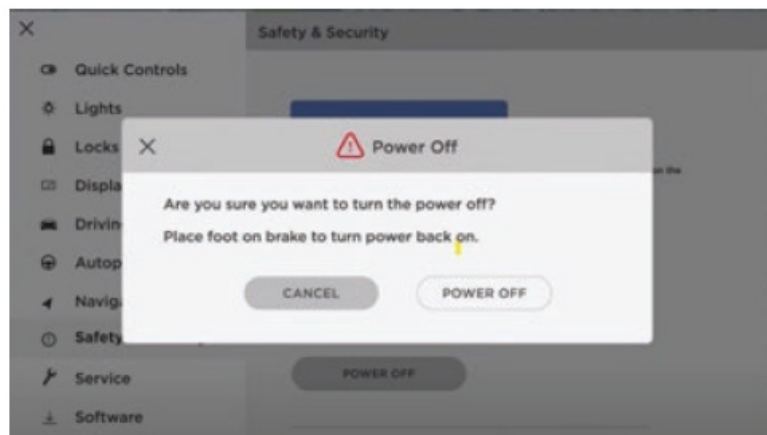
WARNING: Before beginning installation on your Tesla follow the below procedure.

IMPORTANT: Re-install ALL Factory Plugs To Their Original Location, FAILURE TO DO SO CAN CREATE COMPUTER FAULTS.

- Battery State should be near 100% charged. ALL WINDOWS ROLLED DOWN
- Frunk & Trunk is OPEN
- Rear Seat is Down (Model Y Only)

Tesla Model 3/Y Power Down Procedure

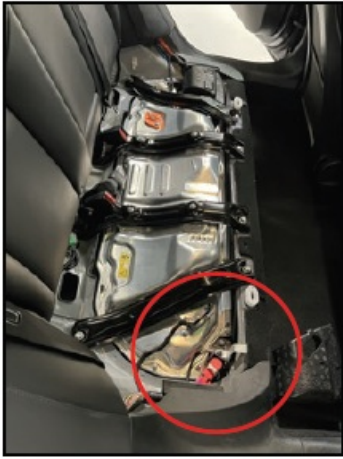
1. Turn off the Screen in Settings Following Step (A, B, C)



- A) Enter the Controls Menu in the Bottom Left Corner
 - B) Tap Safety & Security Menu on the Left-Hand Menu
 - C) Press the Power OFF Button, and Confirm OFF
2. Access the Frunk and disconnect the low-voltage battery cable. Release the Tab and Pull Up. (To access the battery use a 10mm socket to remove the Cowl, Tub & Cabin Filter Housing)



3. Remove the Rear Bench Seat Cushion
4. Un-Plug the high voltage contactor under the Rear Seat



WARNING: Before beginning installation on your Tesla follow the below procedure.

IMPORTANT: Re-install ALL Factory Plugs To Their Original Location, FAILURE TO DO SO CAN CREATE COMPUTER FAULTS.

- Battery State should be near 100% charged.
- ALL WINDOWS ROLLED DOWN
- Frunk & Trunk is OPEN

Tesla Model 3/Y Power-Up Procedure

1. Under the Rear Bench Seat cushion plug in and latch the high voltage battery contactor pictured.



2. Access the Frunk and re-connect the low-voltage battery connector.



3. Power up the vehicle by pressing the brake pedal.

Installation Instructions

Installation Instructions (Integration Harness)

- To access the front factory amplifier you need access the front passenger kick panel.
Using a panel removal tool you will need to remove 3 panels marked below. (#1) (#2) (#3)



- First, remove the under-dashboard trim panel (#1) by releasing all retaining clips and pulling.
After the panel is detached unplug the speaker and footwell light and stow the panel away,



- Next remove the outer dashboard trim panel (#2) near the door sill followed by the kick panel base board trim (#3)



- Inside of the upper passenger footwell locate the factory amplifier pictured.

(PSS-TSLA-22Y) 2022+

There are two connectors on the amplifier

Disconnect the 2 bottom male connectors from factory amp and replace with plugs (A + B) from the Alpine Tesla Harness. Transfer the disconnected factory connectors into the open ends of the Alpine Harness.

(PSS-TSLA-21Y) 2021 and earlier

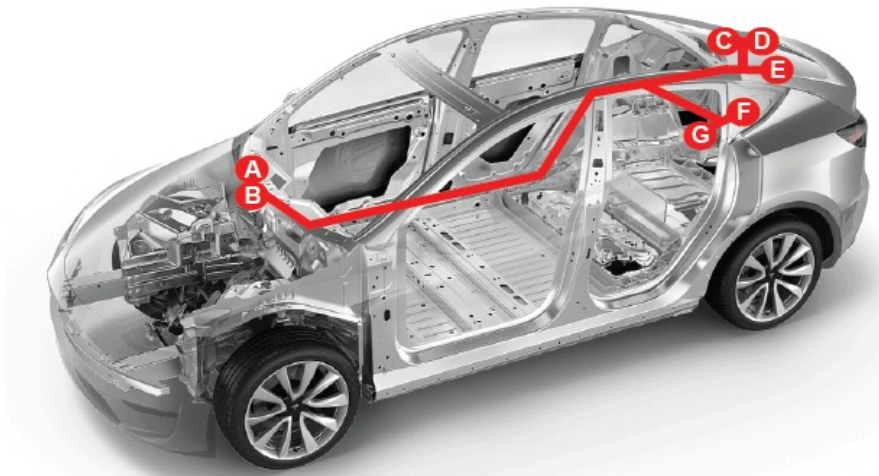
There is one connector on the amplifier

Disconnect the single bottom male connector from factory amp and replace with Plug (B). Transfer the disconnected factory plug into the open end of the Alpine Harness.

2022+ Model Shown (Dual Plug Factory Amplifier)



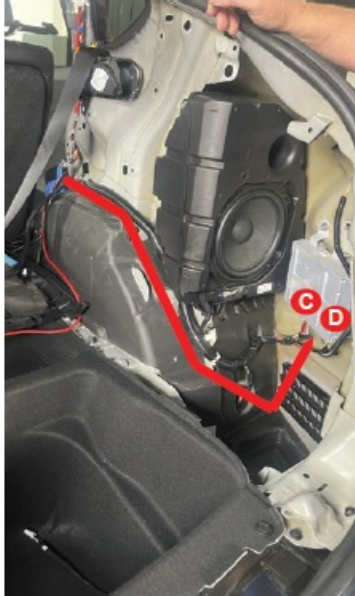
- Route the Alpine harness cable along the factory wire channel, toward the B-Pillar. Make sure the wire is properly tucked



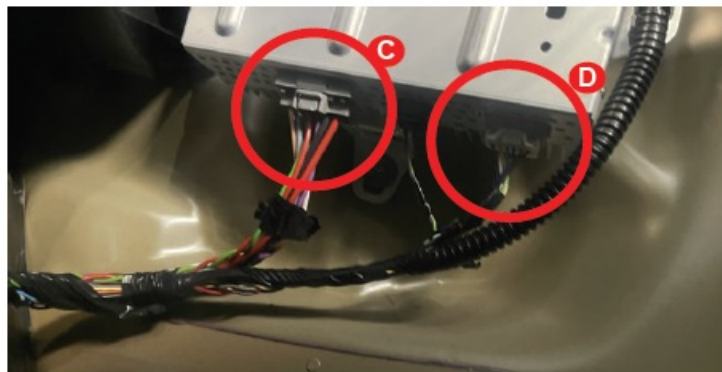
- Loosen the base of the B-Pillar Panel and route the harness from the front half of the vehicle towards the rear

cabin of the vehicle.

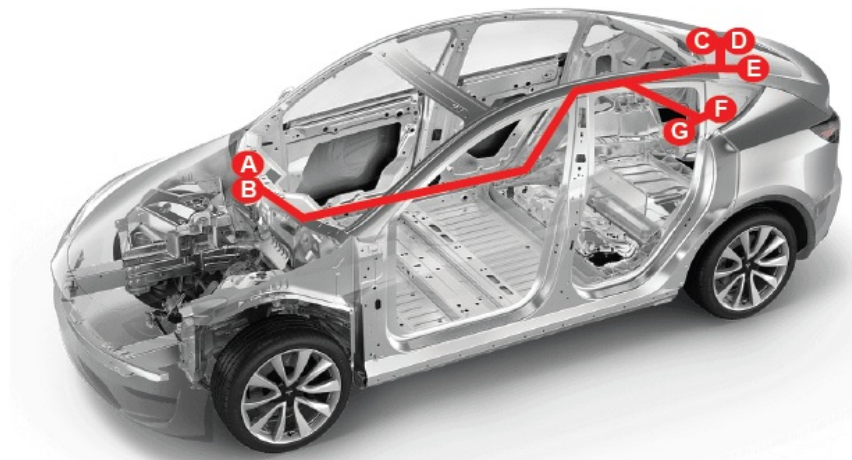
- Route the harness along the rear wheel towards the rear factory sub-amplifier
- Factory configuration is shown in image



- Disconnect two factory plugs from the rear amplifier and replace them with the alpine harness plugs (C+D). transfer the original car plugs back into the female end of the Alpine Harness



- Route the Alpine harness cable along the factory wire channel, toward the B-Pillar. Make sure the wire is properly tucked



- Plug in & Mount the amplifier

Power Harness

Installation Instruction (Power Harness)

- FULLY POWER DOWN YOUR TESLA AND DISCONNECT THE BATTERY BEFORE CONTINUING. SEE POWER DOWN PROCEDURE
- **IMPORTANT:** For Optimal Sound Quality Sound Dampening Is Highly Recommended for Tesla Applications
- **IMPORTANT:** Re-install ALL Factory Plugs To Their Original Location, FAILURE TO DO SO CAN CREATE COMPUTER FAULTS.

1. Remove the rear bench seat from the Model 3 using the two release latches at the front of the cushion



2. Locate the low voltage 12V battery posts in the rear seat passenger compartment (Under the seat) Use a socket to remove the battery post hardware nuts

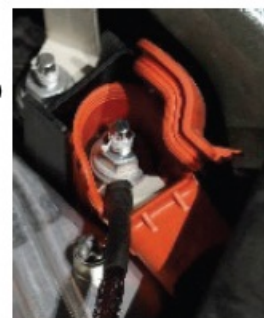


3. Connect the Alpine harness Positive and Negative lug to the low-voltage battery posts under the rear seat & re-tighten the hardware.

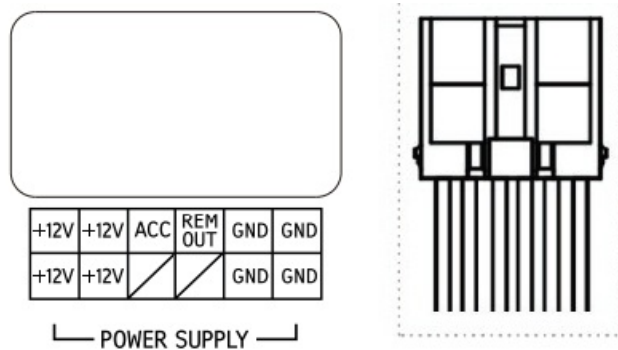


Negative
(Chassis Ground)

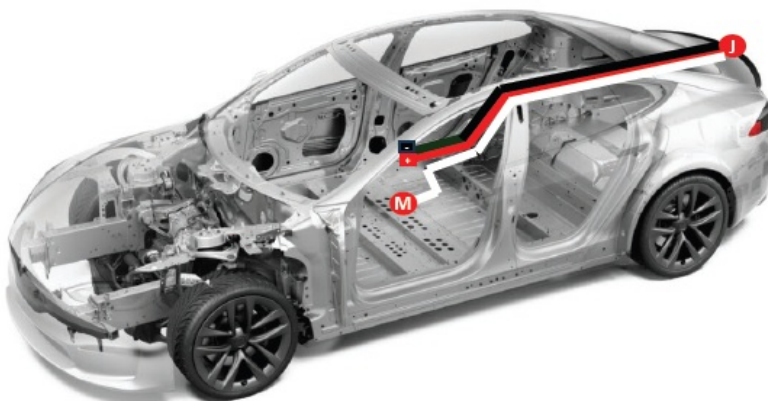
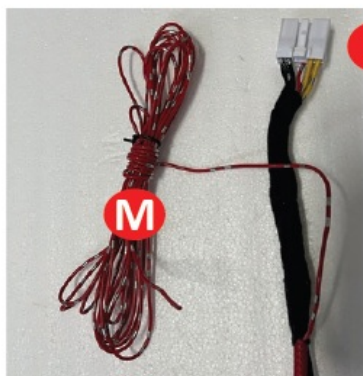
Positive



4. Route 12V Power Harness (Plug J) from the rear bench seat to the trunk to the amp mounting location.



5. Route the remote trigger 18awg primary wire (M) to the rear of the center console. Extra Length is OK



- FULLY POWER DOWN YOUR TESLA AND DISCONNECT THE BATTERY BEFORE CONTINUING. SEE POWER DOWN PROCEDURE
- **IMPORTANT:** For Optimal Sound Quality Sound Dampening Is Highly Recommended for Tesla Applications
- **IMPORTANT:** Re-install ALL Factory Plugs To Their Original Location, FAILURE TO DO SO CAN CREATE COMPUTER FAULTS.

1. Use a panel removal tool to remove the lower rear cover of the center console, once removed this should reveal two large plugs.



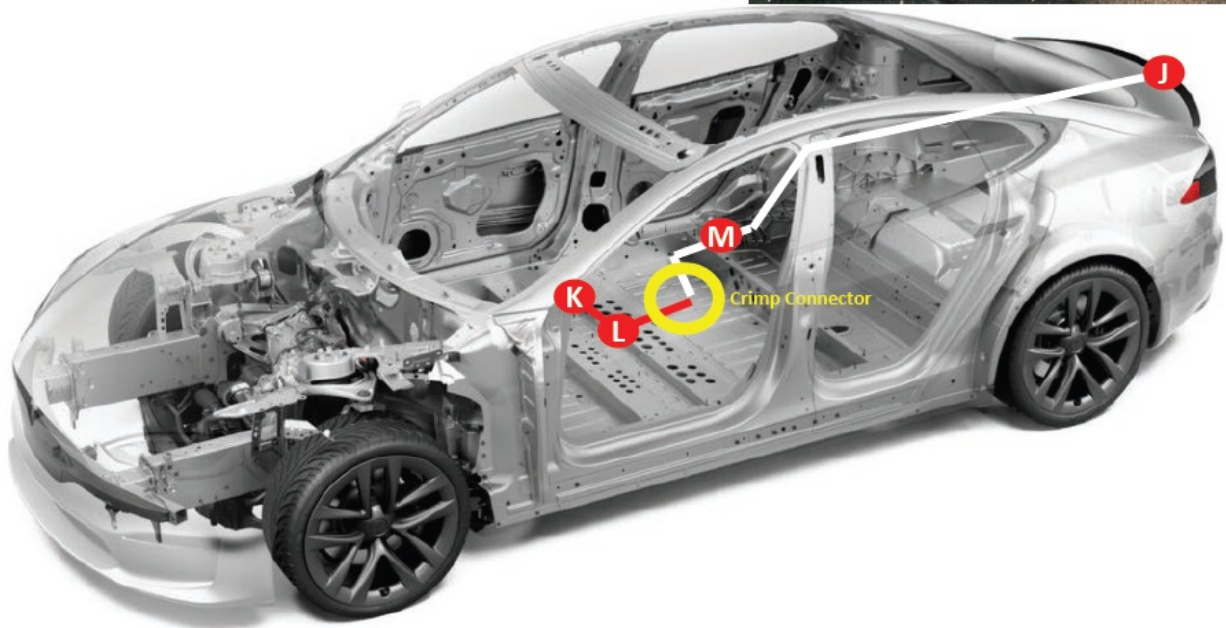
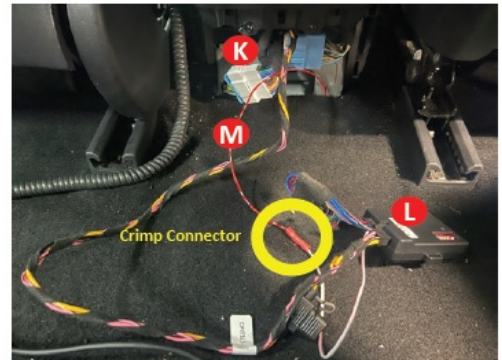
2. Locate and unpack the CP1-S CANPRO and CP1-TSL1



3. Connect Harness "K" black plastic Molex end with the corresponding plug of CANPRO CP1-S Module "L" . Set dipswitch 2 to ON position



4. Disconnect factory connectors and replace the white plastic plugs from CP1-TSL1 "K" into the rear center console Plugs. Trim the excess length wire from "M" and crimp together with Output #1 from CP1-S "L"



5. When finished tuck all excess wiring and CANPRO module into the rear center console compartment and re-install the lower cover using factory clips.

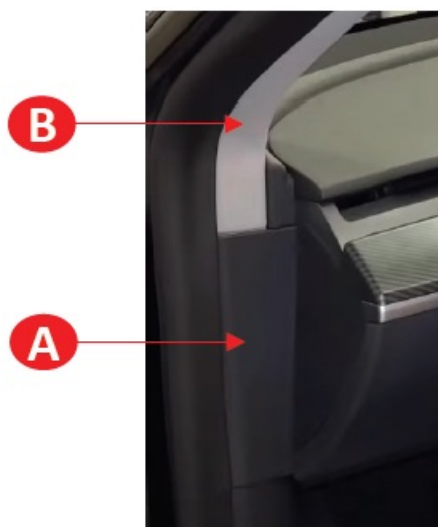
Dashboard Speaker Installation

Dashboard Speaker Installation (EV-40MR-T)

- FULLY POWER DOWN YOUR TESLA AND DISCONNECT THE BATTERY BEFORE CONTINUING. SEE POWER DOWN PROCEDURE
- **IMPORTANT:** For Optimal Sound Quality Sound Dampening Is Highly Recommended for Tesla Applications
- **IMPORTANT:** Re-install ALL Factory Plugs To Their Original Location, FAILURE TO DO SO CAN CREATE COMPUTER FAULTS.

1. Using a panel removal tool.

Remove dash side cover "A" followed by pillar cover "B" on both sides of the vehicle. The weather gasket can be peeled back for easier access



2. Use a Panel Removal Tool around the edge of the dashboard speaker cover panel to release the factory clips. Release the panel and pull upwards to detach and expose the center stage speakers.



3. Remove (3) T20 Torx bolts securing each factory speaker Remove (2) T20 bolts securing the factory tweeter Use T20 Torx. A Shallow Ratcheting Torx Bit is required.



4. If your vehicle is equipped with a center speaker connect the Y-Harness between the center mid and tweeter & Plug all speakers into the factory connectors



5. Secure all Alpine speakers to the dash by Re-installing all remaining factory T20 Torx. After speakers are mounted Install the dashboard speaker cover panel by applying uniform pressure to engage the factory clips.



6. Re-install dash side cover "A" followed by pillar cover "B" at both sides of the vehicle.

Front Door Speaker Installation

Front Door Speaker Installation (EV-65CF-T)

- FULLY POWER DOWN YOUR TESLA AND DISCONNECT THE BATTERY BEFORE CONTINUING. SEE POWER DOWN PROCEDURE
- **IMPORTANT:** For Optimal Sound Quality Sound Dampening Is Highly Recommended for Tesla Applications
- **IMPORTANT:** Re-install ALL Factory Plugs To Their Original Location, FAILURE TO DO SO CAN CREATE COMPUTER FAULTS.

1. Remove the Front Door Panels

- Pry the Red Reflector Clip Off Using Slim Panel Remover
- Use a T30 Screw Driver Remove (3) Screws in Each Panel
- Screws are located under the door grip handle
- Screw is located behind the red reflector



2. Use a Panel Removal Tool around the edge of the panel to release the factory clips. Release the panel and pull upwards to detach, unplug the factory panel connections including the green speaker plug.

(Note: Some cables are non-removable leave the door panel resting on a soft ground surface)



3. Remove 4 bolts securing each factory speaker adapter. Use an 8mm Socket or T25 Torx (Varies depending on the year) The factory Adapter should then unclip easily.



4. Install the new Alpine Speaker & Adapter to the door panel using the factory screws. Plug in the green factory speaker adapter plug.



5. Plug in all remaining factory door connectors. Mount and re-install each factory door panel using (3) T30 Torx.

Apply Pressure around the door panel to engage the factory clips. Re-install the Red Reflector Clips

Front Door Tweeter Installation (EV-65CF-T)

- FULLY POWER DOWN YOUR TESLA AND DISCONNECT THE BATTERY BEFORE CONTINUING. SEE POWER DOWN PROCEDURE
- **IMPORTANT:** For Optimal Sound Quality Sound Dampening Is Highly Recommended for Tesla Applications
- **IMPORTANT:** Re-install ALL Factory Plugs To Their Original Location, FAILURE TO DO SO CAN CREATE COMPUTER FAULTS.

1. Using a panel removal tool remove the Front Tweeter Housing Panel
Use Light Upward Pressure and Pry to Release 2 Clips.



2. With the Tweeter Housing un-clipped from the door unplug the factory speaker connector. If the plug is difficult use a small precision flat tool to release the plug connection.



3. Unclip the Factory Tweeter from the Housing by gently twisting and pulling.



4. Install the new Alpine Tweeter to the housing by positioning the lock tabs and clipping them into place.



5. Plug in the original factory connector to the new Alpine tweeter and pop the housing into place using downward pressure along the factory clips. Make sure it securely latches into place.

Rear Door Speaker Installation (EV-40M-T)

- FULLY POWER DOWN YOUR TESLA AND DISCONNECT THE BATTERY BEFORE CONTINUING. SEE POWER DOWN PROCEDURE
- **IMPORTANT:** For Optimal Sound Quality Sound Dampening Is Highly Recommended for Tesla Applications
- **IMPORTANT:** Re-install ALL Factory Plugs To Their Original Location, FAILURE TO DO SO CAN CREATE COMPUTER FAULTS.

1. Remove the Rear Door Panels

Use a T30 Screw Driver Remove (2) Screws in Each Panel (2) Screws are located under the door grip handle



2. Use a Panel Removal Tool around the edge of the panel to release the factory clips. Release the panel and pull upwards to detach, and unplug the factory panel connections.



3. Using a Drill Bit, Drill out 3 Plastic Rivets on each Factory Door Speaker. Use Care to not over-drill the screw boss.



4. Using a hand screwdriver install the new Alpine Speaker to the door panel using the (6) supplied phillips tap screws & Plug in the speaker connector.



5. Plug in all remaining factory door connectors. Mount and re-install each factory door panel using (2) T30 Torx. Apply Pressure around the door panel to engage the factory clips.

Rear Hatch Speaker Installation (EV-40M-T)

- FULLY POWER DOWN YOUR TESLA AND DISCONNECT THE BATTERY BEFORE CONTINUING. SEE POWER DOWN PROCEDURE

- **IMPORTANT:** For Optimal Sound Quality Sound Dampening Is Highly Recommended for Tesla Applications
- **IMPORTANT:** Re-install ALL Factory Plugs To Their Original Location, FAILURE TO DO SO CAN CREATE COMPUTER FAULTS.

1. Remove the rear hatch panel. Start by removing the 2 upper pillar shrouds (#1) Once removed they should expose 2 Push Pins. Release the Push Pins at both sides of the vehicle.



2. Using a panel tool release the panel from the body of the vehicle. Pull out and unplug the single connector from the panel. The hatch panel should now be able to be removed outside the vehicle



3. Disconnect the speaker plugs from each factory speaker. Un-bend (9) tabs in each grille to expose both speaker mounting flanges. Using a T25 Torx bit undo 3 screws from each driver and remove the factory speaker.



4. Re-use the factory screws to install the new speakers EV-40M-T. Re-attach the grilles to the panel by bending the tabs into place. Install the 2 factory plugs to each speaker.



5. Reconnect the factory plug and Install the panel with new speakers into the hatch by aligning and applying pressure to push clips. Lastly, install the 2 pillar push pins and upper pillar shrouds.

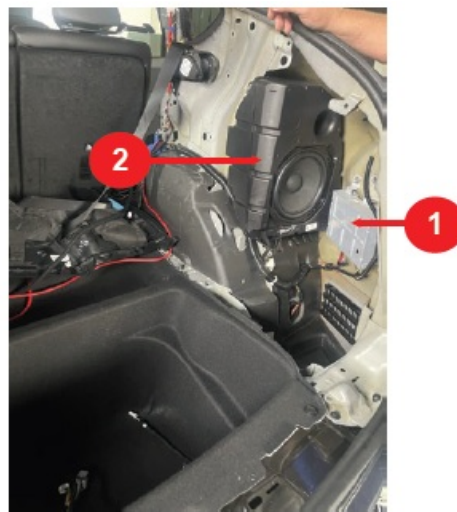
Model 3 Subwoofer Installation (EV-100SW3-T)

- FULLY POWER DOWN YOUR TESLA AND DISCONNECT THE BATTERY BEFORE CONTINUING. SEE POWER DOWN PROCEDURE
- **IMPORTANT:** For Optimal Sound Quality Sound Dampening Is Highly Recommended for Tesla Applications
- **IMPORTANT:** Re-install ALL Factory Plugs To Their Original Location, FAILURE TO DO SO CAN CREATE COMPUTER FAULTS.

1. Access the hatch subwoofer compartment by removing- panels #1-#5. Use a Panel Removal tool to release the clips. After removed do not lose the factory clips.



2. To make room for the new subwoofer #1 Dismount the factory amplifier (2 Nuts 1 Bolt) 10mm #2 Remove the factory subwoofer (3 Bolts) 10mm *Sound Dampening is Highly Recommended at this stage.



3. Mount the new subwoofer box and install it to the factory hardware mounting positions. Next re-fasten the factory amplifier using original hardware.



4. Install Harness Plug E to the subwoofer box plug *Connect Integration Harness Plugs (C+D) to the rear factory amplifier if not already done*



5. Re-install the factory panels in the reverse order they were removed (Start with #5)



Documents / Resources

	<p>ALPS ALPINE PSS-TSLA Intros Audio System For TeslaPSS-TSLA Intros Audio System For Tesla [pdf] Installation Guide</p> <p>PSS-TSLA Intros Audio System For Tesla, PSS-TSLA, Intros Audio System For Tesla, Audio System For Tesla, System For Tesla, Tesla</p>
--	--

References

- [User Manual](#)

[Manuals+](#). [Privacy Policy](#)

This website is an independent publication and is neither affiliated with nor endorsed by any of the trademark owners. The "Bluetooth®" word mark and logos are registered trademarks owned by Bluetooth SIG, Inc. The "Wi-Fi®" word mark and logos are registered trademarks owned by the Wi-Fi Alliance. Any use of these marks on this website does not imply any affiliation with or endorsement.