



# ALPOWL V8s Condenser Microphone User Manual

[Home](#) » [ALPOWL](#) » ALPOWL V8s Condenser Microphone User Manual 

# ALPOWL

Live sound card



## Contents

### 1 Description

### 2 Use caveats and FAQs

### 3 Introduction to Control Panel

### 4 Debugging methods for computer accompaniment and live computer recording:

### 5 Warranty regulations

### 6 Documents / Resources

#### 6.1 References

### 7 Related Posts

## Description

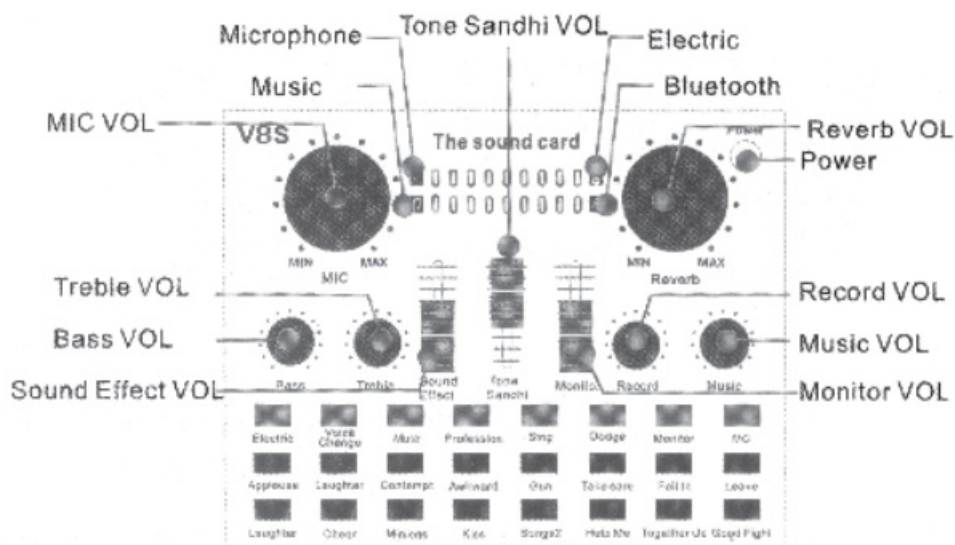
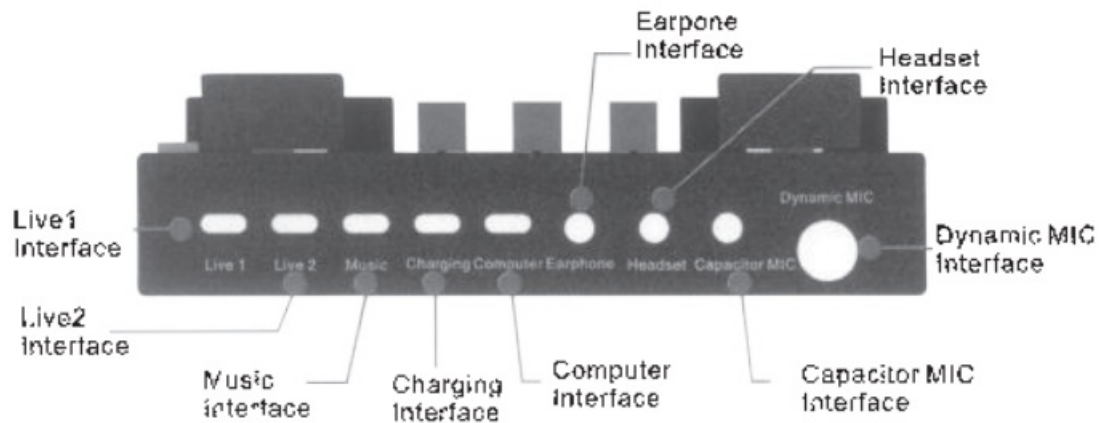
Warm tips: please read and instructions carefully before use, avoid improper use of all kinds of noise or no sound problems, thank you for your cooperation)

## Use caveats and FAQs

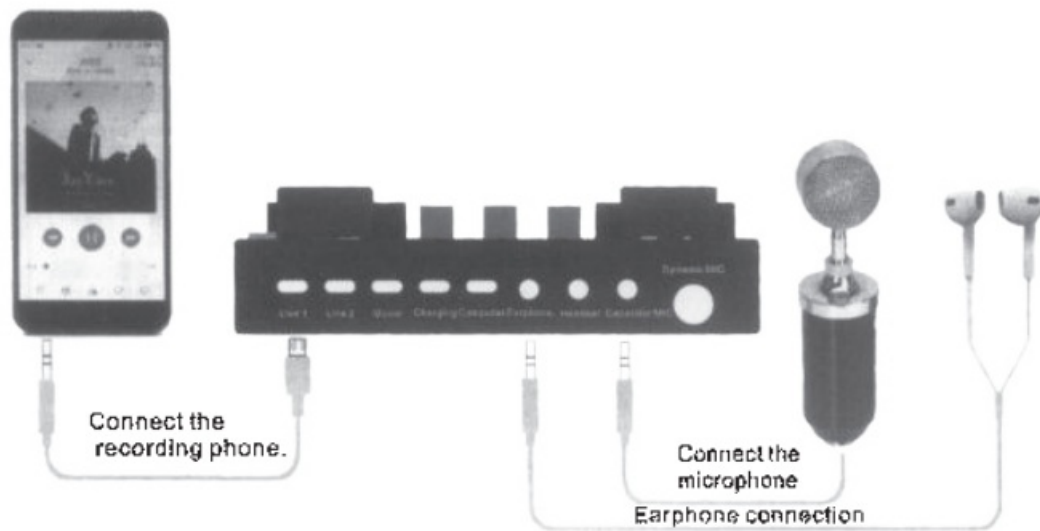
1. New lithium-ion batteries will have the phenomenon of virtual and easy to lose electricity. Just start using. please charge more. When the six blue buttons flicker at the same time, it means that the power of the sound card is insufficient. which will affect the sound quality and make the sound quality change or sound smaller. This is caused by the insufficient power. Please use it fully, When charging, the large knob on the right shows red, and the red light will automatically turn off after filling.
2. Remove the mobile phone shell before using. so as not to pull the mobile phone shell against the connector and affect the use. Be sure to check whether the joint is fully connected and turn the two-ring joint after connecting. Use mobile phone to sing or national song to record the sound (recorded by the recording software in the computer when the computer is in use) and only press the sound effect of the sound card, record it and play it back. Only when the sound effect can be heard, can the sound card be connected completely. When broadcasting live. audiences can hear the sound effects of the play and also indicate that they can use the sound card safely.
3. It is not recommended to use the power socket while charging. The unstable current of the power socket will produce various noises. In case of emergency use, the mobile power supply with larger millampere can be used for charging. However, there are some reasons for the power output of the mobile power supply and the phenomenon of current murmur during charging it is suggested that the sound card be used after charging.
4. The volume knob of recording and music must be opened to the right. This is the volume recorded and the volume heard by the audience.
5. Listen to the effect of live broadcasting, ask friends to listen in another place, do not test in the same place of the mobile phone, there will be signal interference, forming a scream. Live broadcasting does not use speakers. please use earplugs, speakers will have stress affect the quality of the sound. Sing to the people around you. If you play outside the speaker, the distance between the microphone and the speaker should be extended, so as to avoid the loudspeaker screaming at the microphone or disturbing the noise.
6. Connect Bluetooth accompaniment, turn on Bluetooth of mobile phone, look for "V3S Bluetooth". the color of big knob on the left turns green, Indicating that Bluetooth has been docked.
7. Attention should be paid to the use of the headset (you can use a single headset without a microphone). The sensitive headset is prone to screaming when the volume is too high. Please adjust the microphone once the listening volume slowly from the minimum to the appropriate volume.

The product battery is a built-in rechargeable lithium battery. Do not disassemble and replace it yourself. You should use the correct method to charge the sound card. Do not put the sound card close to the fire source, and do not be exposed to direct sunlight. The battery will damage the safety device when heated. Could cause the battery to explode or burn.

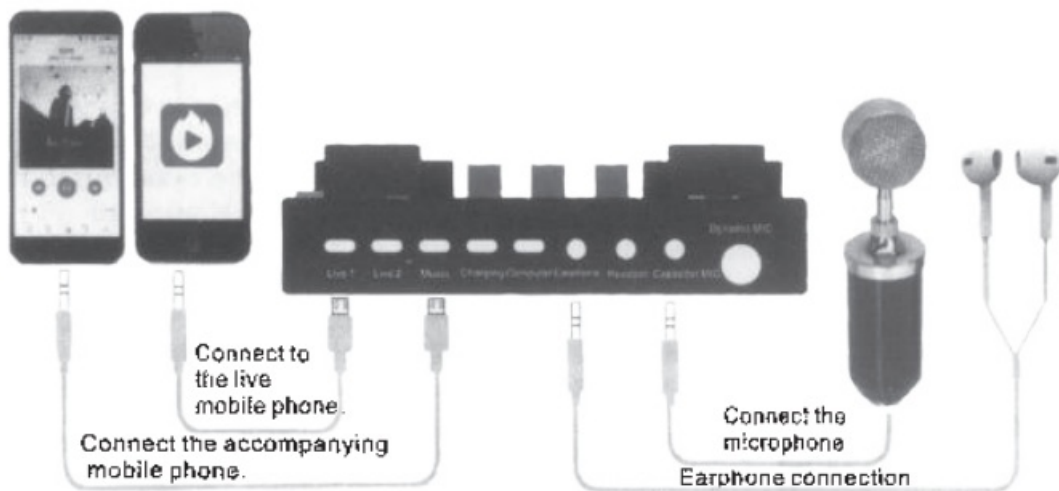
## Introduction to Control Panel



## Connection Method of Single Mobile K Song Recording

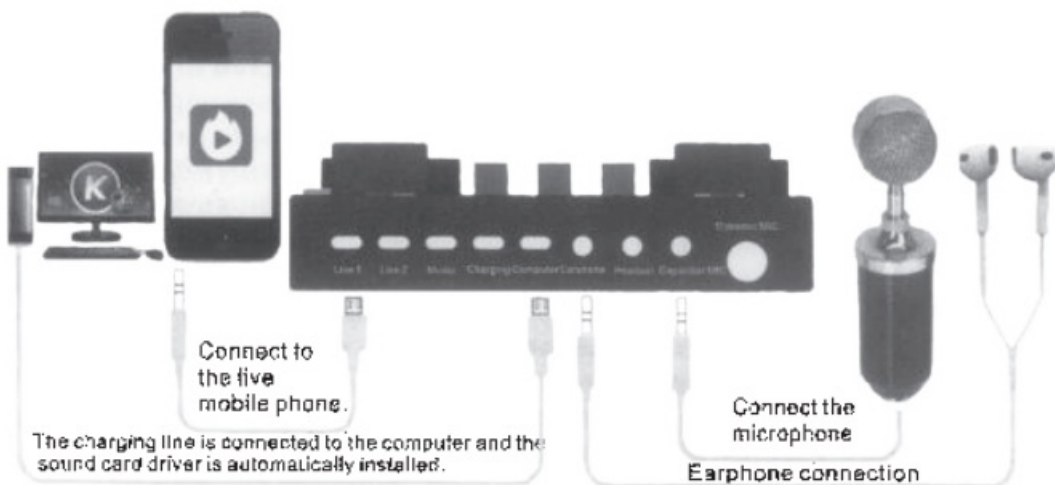


### Connecting method of live broadcasting on two-handset



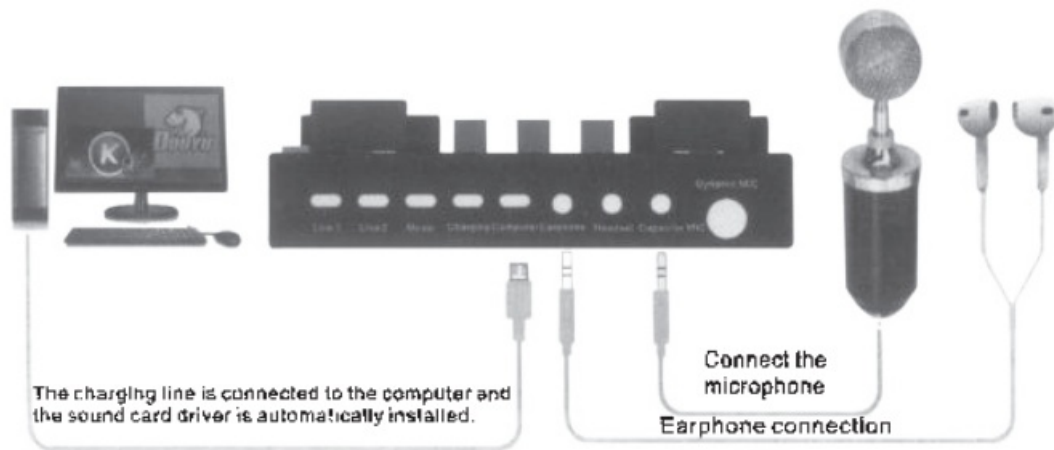
### Mobile live broadcasting, computer accompaniment connection method:

Warm tips: connect the computer sound card must be turned on, the computer recognizes the sound card after the computer right There will be a prompt drive installation in the Jower corner.  
(Laptops and desktops are connected the same way)

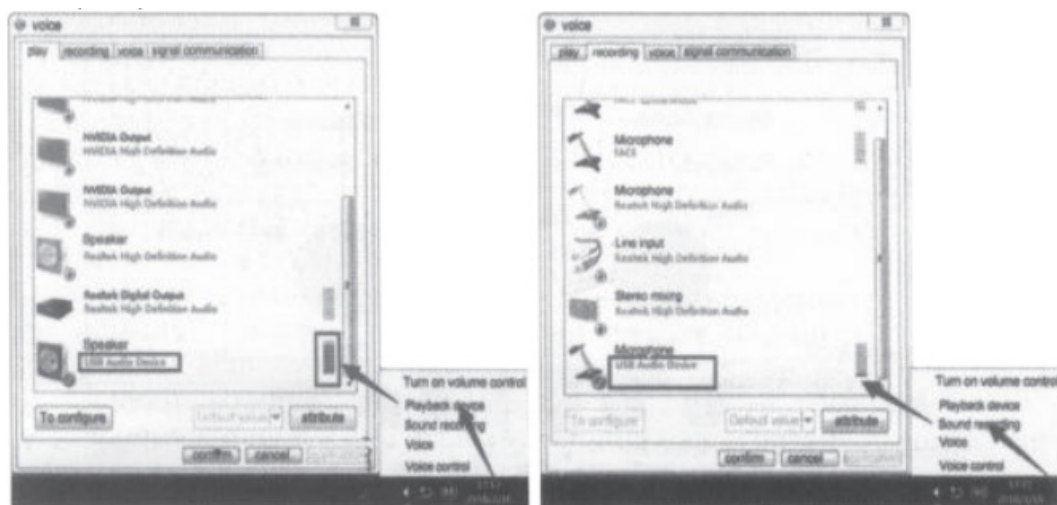


### Computer live connection method:(computer accompaniment)

Warm tips: connect the computer sound card must boot, the computer recognized to the sound card after the computer in the lower right corner of the prompt drive installation success. (Desktop / notebook / all-in-one connection is the same)



## Debugging methods for computer accompaniment and live computer recording:



After the sound Card Is connected to the computer and ine computer nas recogmzed the sound cara

1. Right-click the small speaker in the lower right corner of the computer to adjust the volume and lurn on the playback device if it is displayed below the speaker "MV USS Audio" and set to dofault, that isthe computer accompaniment is successfully installed or the Sound card has been recognized by the computes.
2. Right-click the speaker in the lower right corner of tha computer to adjust the volume. Turn on the recording device if itis displayed below the microphone."MV LISB Audio" and set to defaultl, thatis. the sound card microphone is successfully installed or the sound card has bean recognized by the computer.

## Warranty regulations

1. This product will be free for one year from the date of purchase(with the date indicated on the shipping order)Repair and maintenance If you have a problem during normal use please contact the company's business,should be out of warranty Show this single.
2. The machine failure caused by the following reasons is not covered by the free warranty:
  - A.Component damage due to human factors(visible physical damage, etc.}.
  - B.Component damage and failure due to customer transportation
  - C. Tubular machine virus infection causes the product to not work properly.
  - D.Force majeure:Earthquakes , lightning,fires,etc Natural disasters cause accidents(stolen and lost The equipment caused by irresistible force cannot work normally.

- E.Because the use of third-party software causes the product to not work properly.
  - F.Fault damage caused by poor power environment or foreign objects that the unit cannot tolerate.
  - G.Product failure caused by disassembly and repair.
3. due to product failure, directly or indirectly caused by the failure of other equipment is not responsible.

With the core warranty  
please keep in mind

Warranty card

Product number: \_\_\_\_\_

Product Series: \_\_\_\_\_

Where to buy/shop: \_\_\_\_\_

Purchase date: \_\_\_\_\_

Purchase account: \_\_\_\_\_

Purchaser's name: \_\_\_\_\_

Purchase order number: \_\_\_\_\_

Contact number: \_\_\_\_\_

Contact address: \_\_\_\_\_

E-mail address: \_\_\_\_\_

Certification

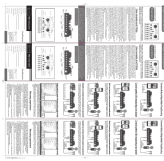
Model: \_\_\_\_\_

Inspector: \_\_\_\_\_

Product Model: \_\_\_\_\_

This product has passed the inspection and meets the specified quality standards and is approved to leave the factory

Documents / Resources



[ALPOWL V8s Condenser Microphone](#) [pdf] User Manual  
V8s, BM 800, V8s Condenser Microphone, V8s, Condenser Microphone, Microphone

References

- [User Manual](#)