



ALPINE PXE-C60-60 Sound Processor and Amplifier with Automatic Sound Tuning Instruction Manual

[Home](#) » [Alpine](#) » ALPINE PXE-C60-60 Sound Processor and Amplifier with Automatic Sound Tuning Instruction Manual 



Software Update
PXE-C80-88/PXE-C60-60 ● 1/5
OPTIM Auto EQ Update Procedure
PXE-C80-88/PXE-C60-60
OPTIM™ Sound Processor and Amplifier with Automatic Sound Tuning

Contents

- [1 Introduction](#)
- [2 Step 1: Unzipping The PXE-C80-88/PXE-C60-60 Firmware](#)
- [3 Step 2: Updating The PXE-C80-88/PXE-C60-60 Firmware](#)
- [4 Step 3: Updating The PXE-C80-88/PXE-C60-60 Controller](#)
- [5 Troubleshooting Guide](#)
- [6 Documents / Resources](#)
 - [6.1 References](#)

Introduction

- This installation manual is designed to take you through the step-by-step installation of the firmware version 1.6.000 update for the PXE-C80-88 and PXE-C60-60. Please familiarize yourself with the owners manual (found at www.alpine-usa.com/support) and if you still have additional questions please call 1-800-TECH-101.
- This firmware update corrects issues with the following:

Allows the use of the 1.4 PC software for setting up and tuning the system.

All key features of the PC software are available in the Android and iOS apps.

The Auto Anti-EQ algorithm has been updated.

Target curve presets have been added.

Center stage mode has been added.

A consolidated controller menu (removed “Main Source” menu with Coax, USB, and BT selection; must go into OPTIM App to make source selection)

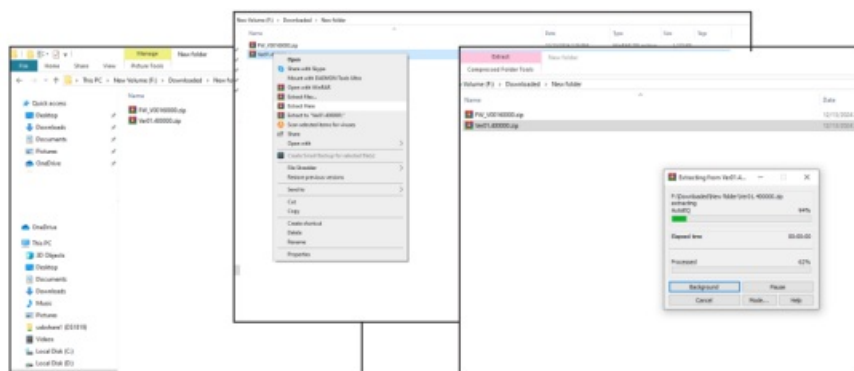
Caution!

- Do NOT turn off vehicle’s ignition or head unit’s power switch while updating. Some modern vehicles may shut down the ignition (ACC) if the engine is not running for some time. If you are not sure if this applies to your car, leave the engine running while the update is in progress.
- Do NOT remove the USB flash memory while updating.
- Do NOT press any buttons while updating.
- Do NOT update while driving.
- Failing to follow any of these cautions could cause damage to the head unit.
- Do NOT use the prior version of the software if you have it (PXE-C80-C60.exe). Using the older version of the software can be permanently detrimental to the overall function of your PXE-C80-88 or PXE-C60-60 product.

Step 1: Unzipping The PXE-C80-88/PXE-C60-60 Firmware

1-1 From the Knowledge Center on the Support page of the website you would have two files that need to be unzipped called FW_V00160000.zip and Ver01.400000.zip. The file named FW_V00160000.zip is the new firmware for the processor. The file named Ver01.400000.zip is the new software for tuning the processor using the PC.

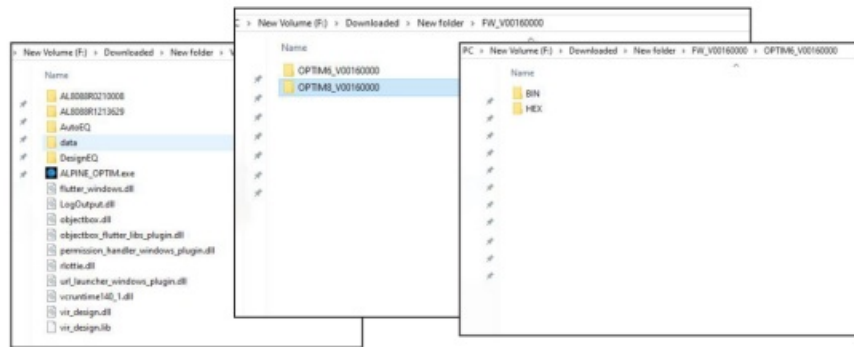
1-2 Extract the downloaded files using a program like WinZip to your computer. If you don’t have a program that handles zip files on your computer you will need to install one.



Step 1: Unzipping The PXE-C80-80/PXE-C60-60 Firmware Continued

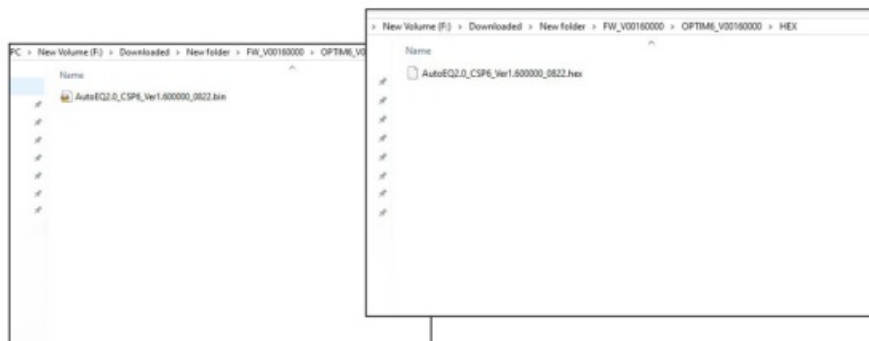
1-3 The first picture shows what the Ver01.400000.zip file folder will include when it is extracted. The ALPINE_OPTIM.exe file is the one you need to double click on to launch the new software for the PC.

1-4 The second picture shows the two folders that will be inside the FW_V00160000 folder once the zip file is extracted. The folder called OPTIM6_V00160000 is the new firmware for the PXE-C60-60. The folder called OPTIM8_V00160000 is the new firmware for the PXE-C80-88. Each of those folders has a folder called HEX and BIN inside of them, which is shown in the third picture.



1-5 Inside the BIN folder for the PXE-C60-60 is a file that is called AutoEQ2.0_CSP6_Ver1.600000_0822.bin. The PXE-C80-88 has a file called AutoEQ2.0_CSP8_Ver1.600000_0823.bin inside of it. Those are the firmware files that will need to be selected in the later steps. The first picture shows an example of this.

1-6 Inside the HEX folder for the PXE-C60-60 is a file that is called AutoEQ2.0_CSP6_Ver1.600000_0822.hex. The PXE-C80-88 has a file called AutoEQ2.0_CSP8_Ver1.600000_0823.hex inside of it. These files will not be touched. The second picture shows an example of this.

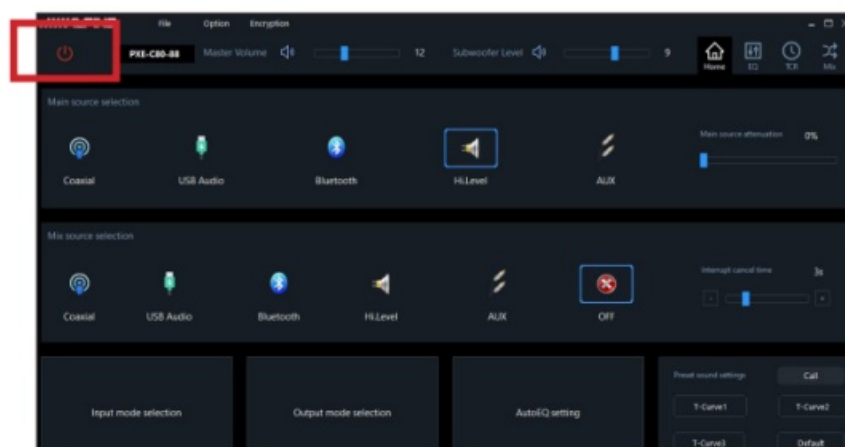


Step 2: Updating The PXE-C80-80/PXE-C60-60 Firmware

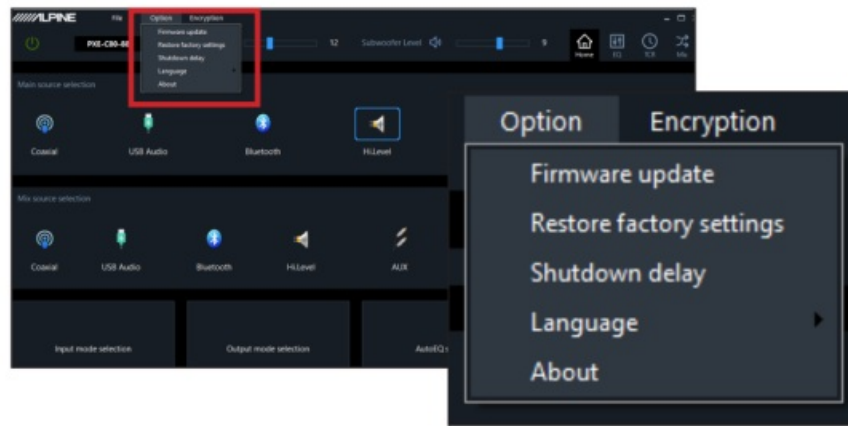
2-1 Open the ALPINE_OPTIM.exe software application on the PC. Click on the upper left icon to connect to the DSP. The color of the icon will change from red to green to indicate that a successful connection has been made.

2-2 Power on the product and ensure the blue indicator light is on.

2-3 Connect one end of the USB-A to USB-A extension cable that came with the product to the USB port on the PXE-C80-88/PXE-C60-60 and the other end to the USB port on your PC.



2-4 At the top of the menu select OPTION/FIRMWARE UPDATE.

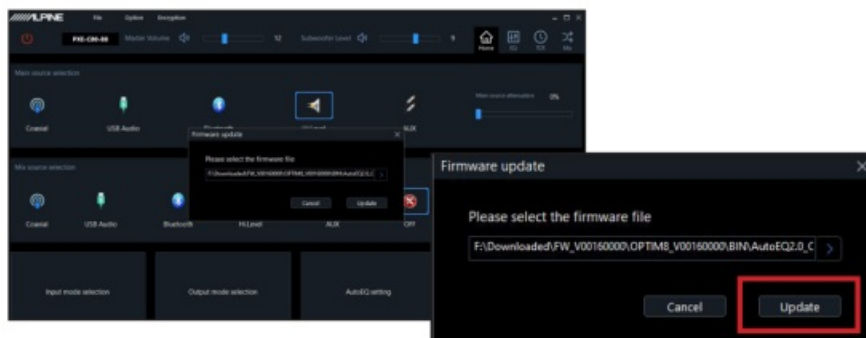


Step 2: Updating The PXE-C80-80/PXE-C60-60 Firmware Continued

2-5 This will popup the firmware update selection screen. Press the > button to select the firmware that you downloaded. For the PXE-C80-88 it will be the .bin file called AutoEQ2.0_CSP8_Ver1.600000_0823.bin. For the PXE-C60-60 it will be the bin file called AutoEQ2.0_CSP6_Ver1.600000_0822.bin.

2-6 Press update and wait for the loading bar to fully load. Once the process reaches 100%, which should take 6-8 minutes (but can vary with different PC connection speeds), a message should appear and state: "Firmware Update Has Successfully Completed". Click OK.

2-7 After the update has completed the unit will restart automatically.



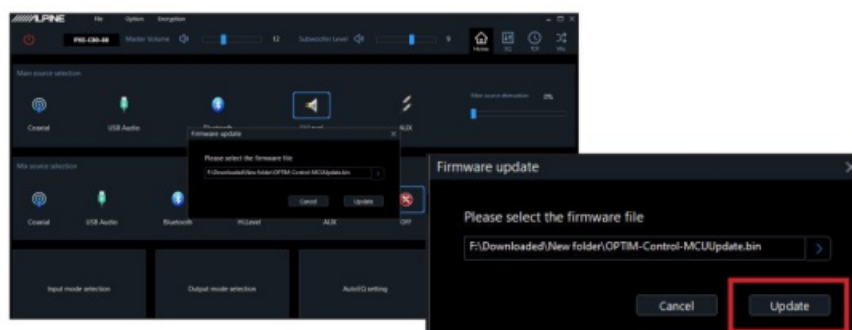
Step 3: Updating The PXE-C80-80/PXE-C60-60 Controller

3-1 Make sure the controller is plugged into the processor. Repeat steps 2-1 through 2-4.

3-2 Browse to the folder that the OPTIM-Control-MCUUpdate.bin file was downloaded to and select that.

3-3 Press update and wait for the loading bar to fully load. Once the process reaches 100%, which should take 6-8 minutes (but can vary with different PC connection speeds), a message should appear and state: "Firmware Update Has Successfully Completed". Click OK.

3-4 After the update has completed the unit will restart automatically.




Troubleshooting Guide

Symptom		Possible Cause	Remedy
1	Firmware update fails to reach 100%.	The downloaded software was not unzipped.	Refer to Step 1. The .zip file will need to be unzipped first using your program of choice (for example, WinZip, WinRAR, IZArc, etc).
		Files were deleted or renamed.	Every file needs to be in every folder as shown. If that changes or the name changes of the any of the files it will not read properly.
		The file folder name was changed or put into a different folder.	Make sure only the file that is shown in step 2 is copied over.
		There's a USB connectivity issue.	Make sure the USB cable is seated properly into the USB ports. A different extension can also be tried. Disconnect the USB extension and power cycle the processor (On, Off, On), plug the extension back in, and try again.



Documents / Resources

	<p>ALPINE PXE-C60-60 Sound Processor and Amplifier with Automatic Sound Tuning [pdf] Instruction Manual</p> <p>PXE-C80-88, PXE-C60-60, PXE-C60-60 Sound Processor and Amplifier with Automatic Sound Tuning, PXE-C60-60, Sound Processor and Amplifier with Automatic Sound Tuning, Amplifier with Automatic Sound Tuning, Automatic Sound Tuning, Sound Tuning</p>
---	---

References

- [Alpine | Support](#)
- [User Manual](#)

[Manuals+](#), [Privacy Policy](#)

This website is an independent publication and is neither affiliated with nor endorsed by any of the trademark owners. The "Bluetooth®" word mark and logos are registered trademarks owned by Bluetooth SIG, Inc. The "Wi-Fi®" word mark and logos are registered trademarks owned by the Wi-Fi Alliance. Any use of these marks on this website does not imply any affiliation with or endorsement.