



## Alpine KTX-NS01 SB Plug In GPS Navigation Owner's Manual

[Home](#) » [Alpine](#) » Alpine KTX-NS01 SB Plug In GPS Navigation Owner's Manual 

### Alpine KTX-NS01 SB Plug In GPS Navigation Owner's Manual



#### Contents

- [1 Operating Instructions](#)
- [2 Installing & Getting Started](#)
- [3 Initial Setting](#)
- [4 Environmental Setting](#)
- [5 Information](#)
- [6 Documents / Resources](#)
  - [6.1 References](#)
- [7 Related Posts](#)

#### Operating Instructions

#### PRECAUTIONS

**IMPORTANT INFORMATION, PLEASE READ CAREFULLY BEFORE USING THIS PRODUCT.**

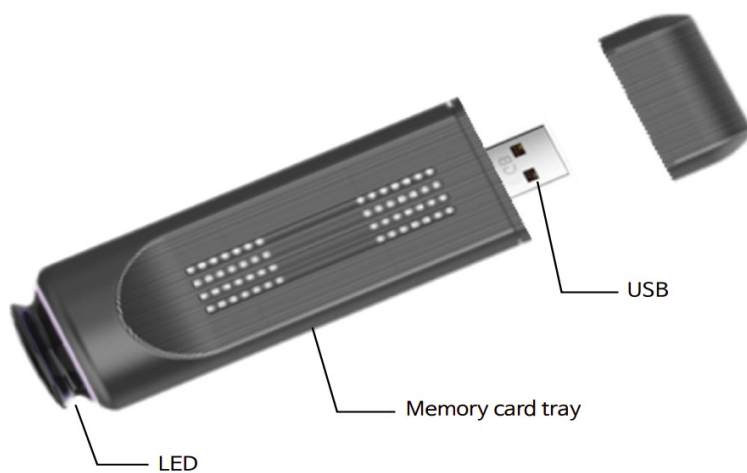
This product is intended to safely provide turn-by-turn instructions to get you to a desired destination. Please read the following precautions to ensure that you use this navigation system correctly

- This product is not a substitute for your personal judgement. Any route suggestions made by this navigation system should never supersede any local traffic regulations or your personal judgement and/or knowledge of safe driving practises. Do not follow route suggestions if the navigation system instructs you to perform an unsafe or illegal manoeuvre, places you in an unsafe situation, or routes you into an area which you consider unsafe.
- Glance at the screen only when necessary and safe to do so. If prolonged viewing of the screen is necessary, stop in a safe and legal manner and location.
- Do not input destinations, change settings, or access any functions requiring a prolonged view of the monitor while you are driving. Stop in a safe and legal manner and location before attempting to access the system
- When using the navigation system to find/route to an emergency service, please contact the facility to validate and verify availability, prior to driving to it. Not all locations of emergency service providers such as police and fire stations, hospitals, and clinics are contained in the database. Please use your own judgement and your ability to ask for directions in these situations.
- The map database used in the navigation system is the most recent map data available at the time of production. Because of changes in streets and neighbourhoods, there may be situations where the navigation system may not be able to route you to your desired destination. In these cases, use your own personal judgement.
- The map database is designed to provide you with route suggestions, it does not take account of the relative safety of a suggested route, or of factors which may affect the time required to reach your destination. The system does not reflect road closures or construction, road characteristics (i.e. type of road surface, slope or grade, weight or height restrictions, etc.), traffic congestion, weather conditions, or any other factors which may affect the safety or timing of your driving experience. Use your personal judgement if the navigation system is unable to provide you with an alternate route.
- There may be situations where the navigation system may display the vehicle's location erroneously. Use your own driving judgement in this situation, taking into account current driving conditions. Please be aware that in this situation, the navigation system should correct the vehicle's position automatically; however, there may be times where you may have to correct the position yourself. If this is the case, stop in a safe and legal manner and location before attempting operation.
- Make certain that the volume level of the unit is set to a level which still allows you to hear outside traffic and emergency vehicles. Driving while unable to hear outside sounds could cause an accident
- Please make certain that any other person who intends on using this navigation system reads these precautions and the following instructions carefully

If there is anything in the manual about the operation of the navigation system which you are uncertain about, please contact your local Alpine authorized navigation dealer before using the navigation system.

## **Installing & Getting Started**





### **Names of Each Part**



It describes the names and functions of the Alpine Stick.

## LED Color & Time

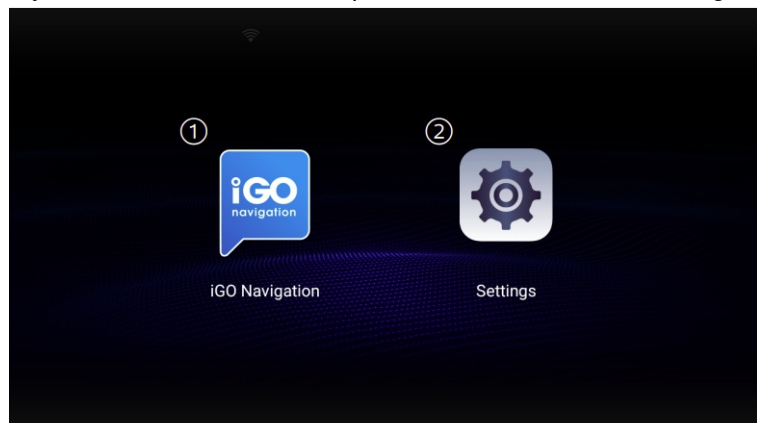
Depending on the state of the Alpine Stick, LED movements and colors change

| LED Color                                                                           | Description                                                                                  |
|-------------------------------------------------------------------------------------|----------------------------------------------------------------------------------------------|
|   | When the Alpine Stick is attached (connected), the skyblue light blinks when recognized .    |
|  | When ignition is on and the Alpine stick is recognized, the skyblue light is maintained.     |
|  | When an update begins, the LED flashes skyblue                                               |
|  | When the Alpine Stick is installed on the PC and recognized, the orange light is maintained. |

## Using the Home Screen

When connecting the Alpine Stick, it consists of the following:

If you want to move to the Alpine Stick screen while running another screen, press the Navigation icon.



1. iGO Navigation

Move to the navigation screen.

2. Settings

Move to the Alpine Stick-related setting screen.

## Initial Setting

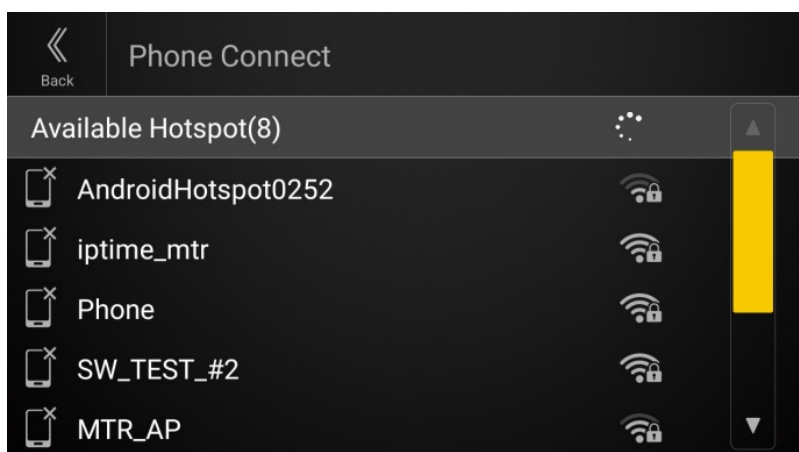
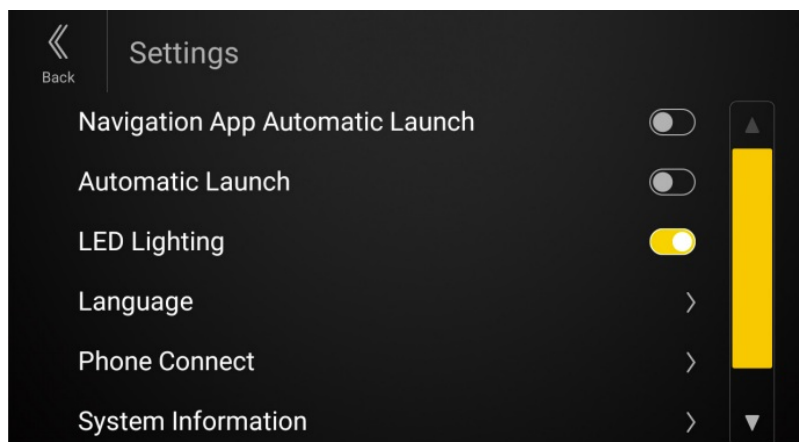
Prior to using the Alpine Stick, initial setting inside the vehicle is necessary. Check the method below for setting.

### Installing the Alpine Stick and Running Navigation

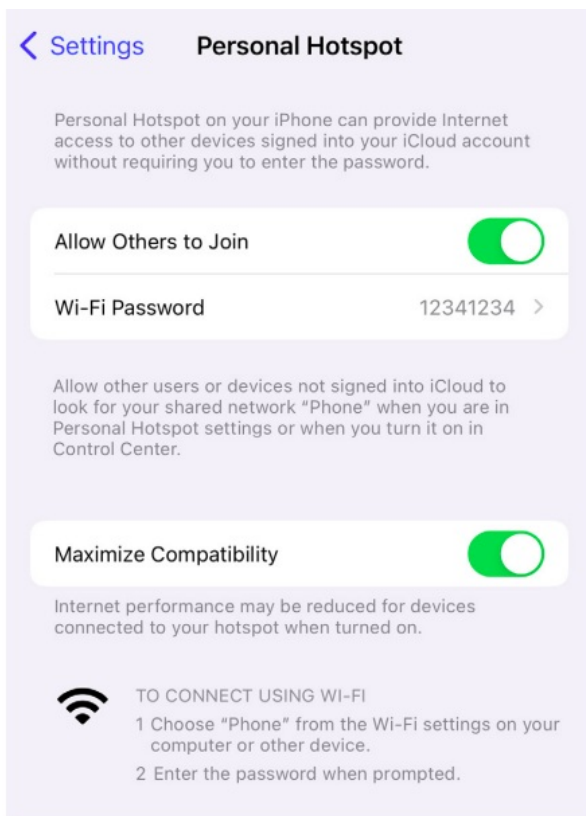
1. Install the Alpine Stick to the USB port.
2. Once the Navigation icon is activated in the vehicle, press iGO Navigation.

### Connecting a mobile phone (Android phone/iPhone)

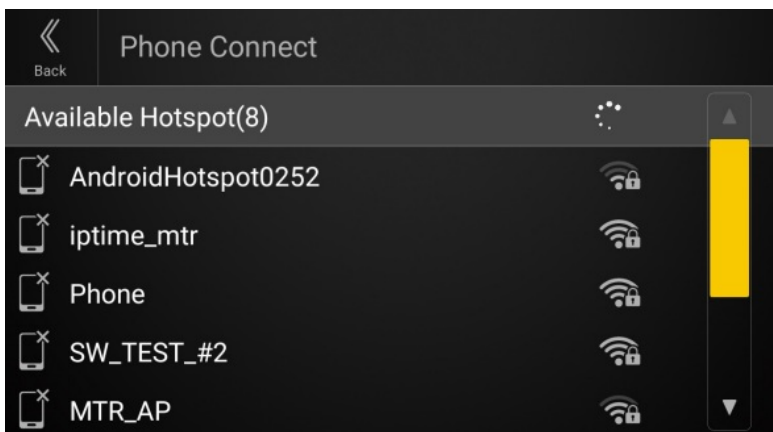
1. After mounting the Alpine Stick, press Settings > Phone Connect.



2. In the settings of the mobile phone, connect a mobile hotspot and check the hotspot name and password



3. On the list of hotspots available for connection, choose the hotspot name and enter the password.



4. If the mobile hotspot is connected normally, the mobile hotspot connection icon appears on the top of the home screen.

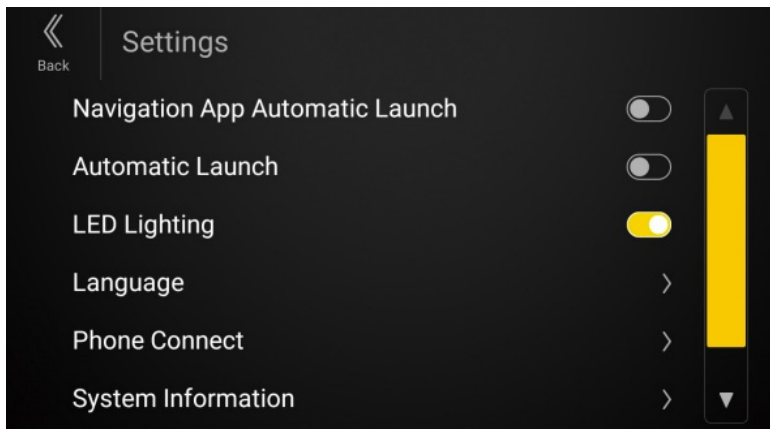
## Environmental Setting

When using the Alpine Stick, you can set necessary functions or check system-related information.

### Setting Navigation App Automatic Launch

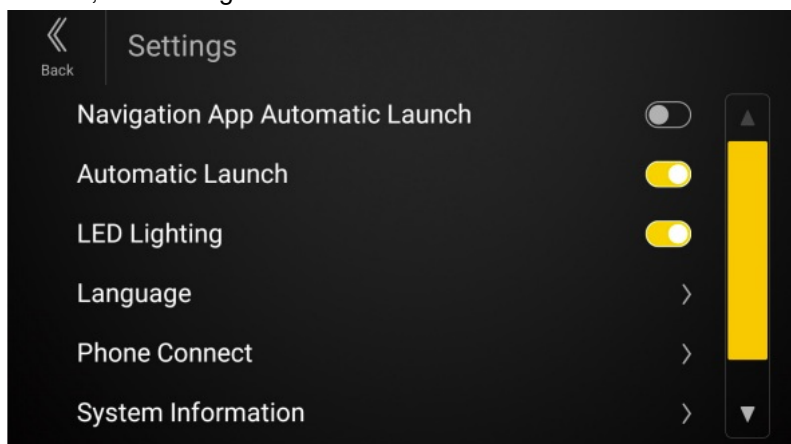
This will auto-start the navigation app once the Alpine Stick is mounted and the connection is established. The two-button launcher will not be shown

On the Menu screen of the vehicle, set Settings > Navigation App Automatic Launch.



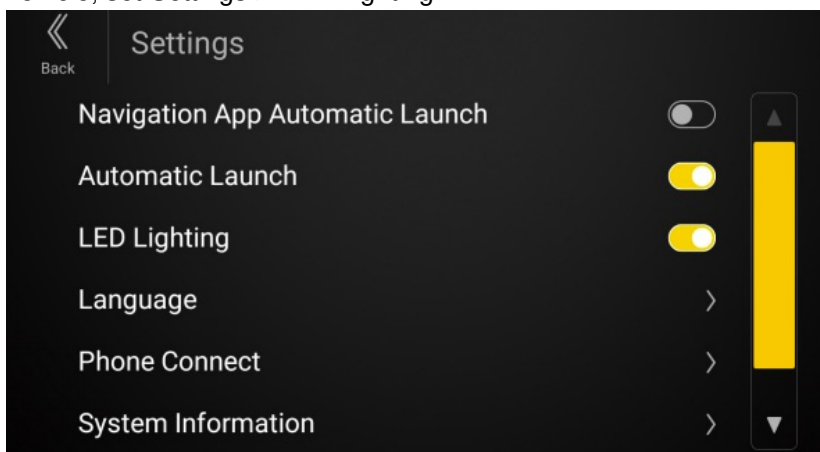
### Setting Automatic Launch

When the Alpine Stick is connected, two launcher screens will automatically appear. On the Menu screen of the vehicle, set Settings > Automatic Launch.



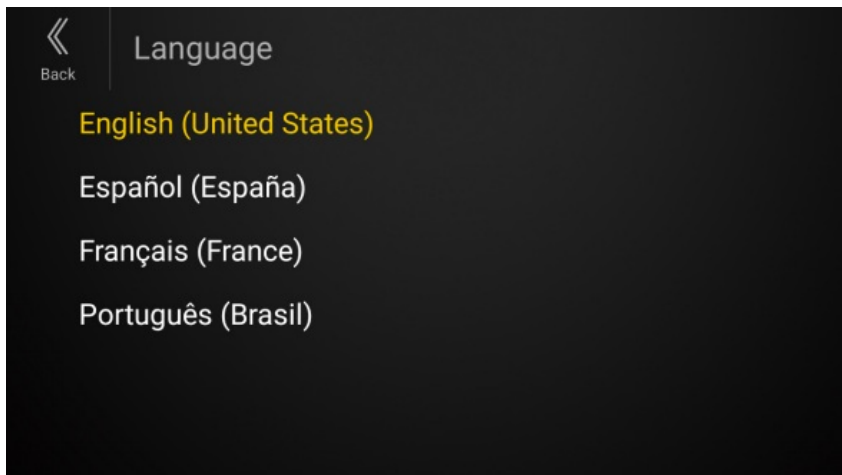
### Setting LED Lighting

When mounting the Alpine Stick, you can activate or deactivate the LED lighting. On the Menu screen of the vehicle, set Settings > LED Lighting



### Setting Language

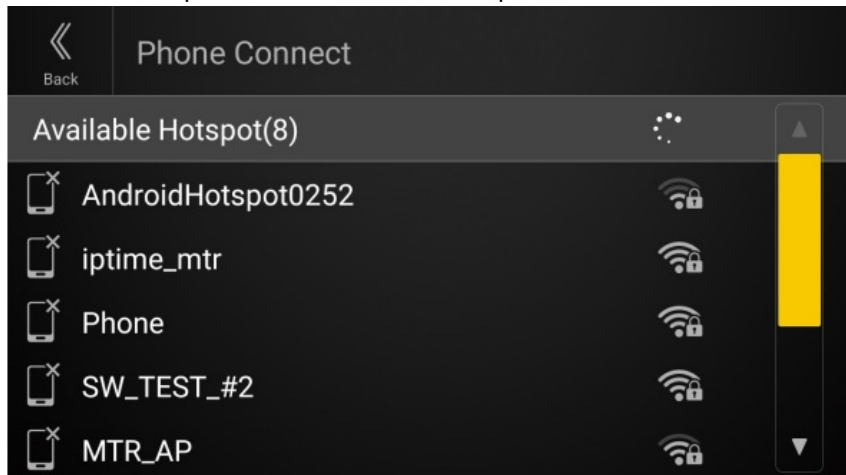
You can set the language to be displayed on the Alpine Stick screen.



1. On the Menu screen of the vehicle, press Settings > Language.
2. Press the language you want to set.

### Setting Phone Connect

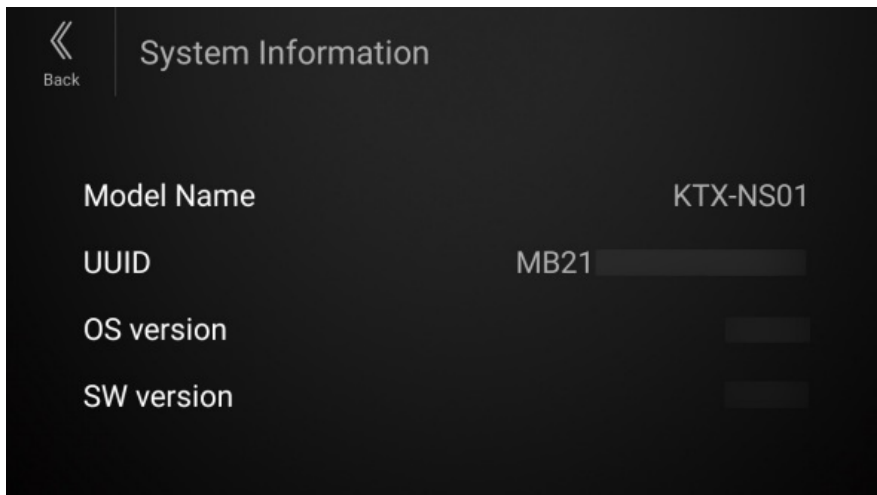
Connect the Alpine Stick with the mobile phone.



1. On the Menu screen of the vehicle, press Settings > Phone Connect.
2. On the hotspot list, press the device to connect and then connect it.
3. Once connected, 'Disconnect' is displayed, and the icon is displayed on top of the Menu screen.

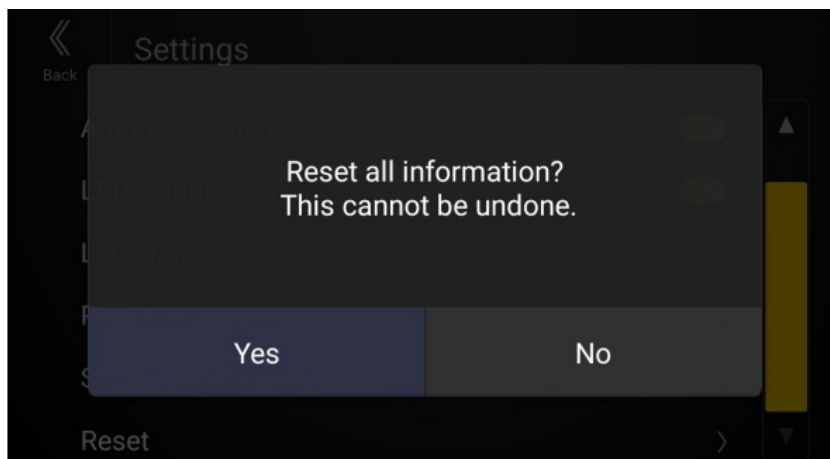
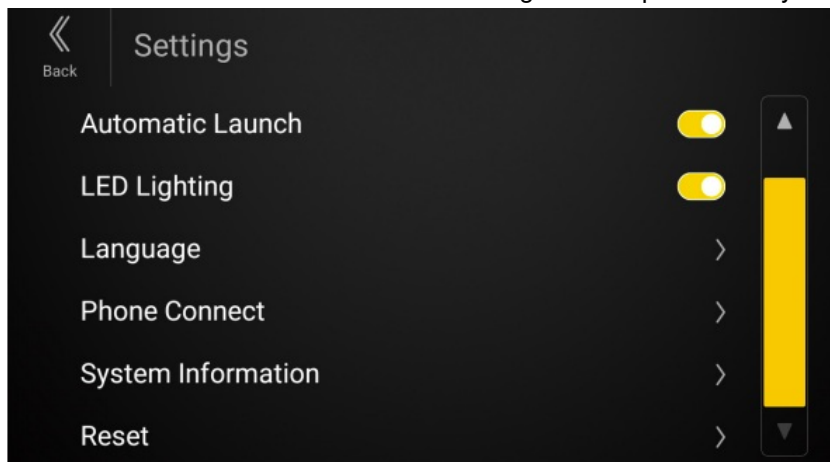
### Setting System Information

You can see the Alpine Stick information.



## Setting Reset

You can reset the use environmental setting of the Alpine Stick system.

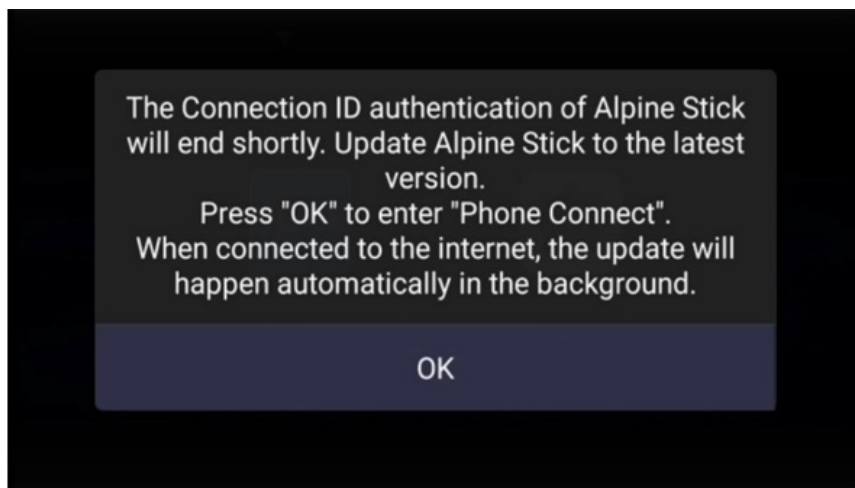


## Caution

Among customers who are using Alpine Stick without using Hotspot for a long time and need navigation updates, a notification popup appears from two weeks prior to the expiration date.

When the Internet is connected after pressing OK, updates are performed automatically.





When connecting Hotspot for use, the above popup does not appear.

## Information

### Product Software Update

This product use software that can be updated through a SD Card. Download the software from the Alpine website and update the product using the SD Card.

### Updating this product

Check the Alpine website for details on updating. <http://www.alpine-usa.com>

### Important information on the software

About the software licence of the product

The Software installed in the product contains open-source software. See the following Alpine website for details on the open source software.

[Http://www.alpine.com/e/research/oss/](http://www.alpine.com/e/research/oss/)

#### • X PRODUCTS COVERED

This Limited Warranty ("Limited Warranty") covers Alpine Car Audio Products and Related Accessories (the "Product"). Products purchased in Canada are covered only in Canada. Products purchased in the U.S.A. are covered only in the U.S.A.

#### • X LENGTH OF WARRANTY

This Warranty is in effect for one year (1) from the date of the original retail purchase on the Product.

#### • WHO IS COVERED:

This Warranty only covers the original purchaser of the Product, who must reside in the United States, Puerto Rico or Canada.

#### • X WHAT IS COVERED:

This Warranty covers defects in materials or workmanship (parts and labor), under normal use, in the Product.

#### • X WHAT IS NOT COVERED:

This Limited Warranty does not cover the following:

1. Damage occurring during shipment of the Product to Alpine for repair (claims must be presented to the carrier).
2. Damage caused by normal wear and tear, accidents or abuse, including burned voice coils caused by over-driving the speaker (amplifier level is turned up and driven into distortion or clipping). Speaker mechanical failure (e.g. punctures, tears or rips). Cracked or damaged LCD panels. Dropped or damaged hard drives.
3. Damage caused by negligence, misuse, improper operation or failure to follow instructions contained in the Owner's manual.
4. Damage caused by an act of God, including without limitation, earthquake, fire, flood, storms or other acts of nature. Any cost or expense related to the removal or reinstallation of the Product.
5. Service performed by an unauthorized person, company or association.
6. Any Product which has the serial number defaced, altered or removed.
7. Any Product which has been adjusted, disassembled, altered or modified without Alpine's consent.
8. Any Product not distributed by Alpine within the United States, Puerto Rico or Canada.
9. Any Product not purchased from an Authorized Alpine Dealer.

#### • HOW TO OBTAIN WARRANTY SERVICE

1. You are responsible for delivery of the Product to an Authorized Alpine Service Center or Alpine for repair and for payment of any initial shipping charges. Alpine will, at its option, repair or replace the Product with a new or reconditioned product without charge. If the repairs are covered by this Limited Warranty, and if the Product was shipped to an Authorized Alpine Service Center or Alpine, Alpine will pay the return shipping charges. The repaired or replaced Product will continue to be covered under the original Limited Warranty period.
2. You should provide a detailed description of the problem(s) for which service is required.
3. You must supply proof of your purchase of the Product.
4. You must package the Product securely to avoid damage during shipment. To prevent lost packages, it is recommended to use a carrier that provides a tracking service.

This Limited Warranty is provided by ALPINE ELECTRONICS OF AMERICA, INC., whose principal office is at 1500 Atlantic Blvd, Auburn Hills, MI 48326, U.S.A.

Do not send Products to this address.

Call the toll-free telephone number or visit the website to locate a service center.

#### • HOW WE LIMIT IMPLIED WARRANTIES

ANY IMPLIED WARRANTIES INCLUDING FITNESS FOR A PARTICULAR PURPOSE AND MERCHANTABILITY ARE LIMITED IN DURATION TO THE PERIOD OF THE EXPRESS WARRANTY SET FORTH ABOVE AND NO PERSON OR THIRD PARTY IS AUTHORIZED TO ADD TO, MODIFY, OR EXTEND THE TERMS OF THIS LIMITED WARRANTY AND/OR ASSUME FOR ALPINE ANY OTHER LIABILITY IN CONNECTION WITH THE SALE OF THE PRODUCT.

#### • X HOW WE EXCLUDE CERTAIN DAMAGES

TO THE MAXIMUM EXTENT PERMITTED BY APPLICABLE LAW, ALPINE AND ITS PARENT COMPANY, AFFILIATES, AND SUBSIDIARIES EXPRESSLY DISCLAIM LIABILITY TO YOU UNDER ANY THEORY OF LIABILITY FOR ALL INCIDENTAL, INDIRECT DAMAGES, SPECIAL, PUNITIVE, AND CONSEQUENTIAL DAMAGES WHICH MAY BE INCURRED BY YOU IN RELATION TO THE PRODUCT. THE TERM INCIDENTAL DAMAGES INCLUDES, BUT IS NOT LIMITED TO, COSTS AND EXPENSES OF TRANSPORTING THE

PRODUCT TO THE ALPINE SERVICE CENTER, LOSS OF THE ORIGINAL PURCHASER'S TIME, LOSS OF THE USE OF THE PRODUCT, BUS FARES, CAR RENTALS OR OTHER COSTS RELATING TO THE CARE AND CUSTODY OF THE PRODUCT. THE TERM CONSEQUENTIAL DAMAGES INCLUDES, BUT IS NOT LIMITED TO, THE COST OF REPAIRING OR REPLACING OTHER PROPERTY WHICH IS DAMAGED WHEN THIS PRODUCT DOES NOT WORK PROPERLY. TO THE EXTENT PERMITTED BY APPLICABLE LAW, THIS LIMITED WARRANTY AND THE REMEDIES PROVIDED HEREUNDER ARE EXCLUSIVE AND IN LIEU OF ALL OTHERS. TO THE MAXIMUM EXTENT PERMITTED BY APPLICABLE LAW, THE TOTAL LIABILITY OF ALPINE, ITS PARENT COMPANY, AFFILIATIES, AND SUBSIDIARIES IN CONNECTION WITH THIS LIMITED WARRANTY AND/OR THE PRODUCT SHALL NOT EXCEED THE AMOUNT YOU ACTUALLY PAID FOR THE PRODUCT

• **HOW STATE/PROVINCIAL LAW RELATES TO THE LIMITED WARRANTY**

This Limited Warranty gives you specific legal rights, and you may also have other rights which vary from state to state and province to province. In addition, some states/provinces do not allow limitations on how long an implied warranty lasts, and some do not allow the exclusion or limitation of incidental or consequential damages. Accordingly, limitations as to these matters contained herein may not apply to you.

If any of the terms of this Limited Warranty are held to be null, void, illegal or unenforceable for any reason, the remaining terms of this Limited Warranty will remain in full force and effect.

• **X HOW TO CONTACT CUSTOMER SERVICE**

Should the Product require service, please call the following number for your nearest Authorized Alpine Service Center.

**CUSTOMER SERVICE: 1-800-421-2284, ext. 860304**

**TECH SUPPORT: 1-800-TECH-101 (1-800-832-4101)**

This device complies with Industry Canada license-exempt RSS standard(s). Operation is subject to the following two conditions:

1. this device may not cause interference, and
2. this device must accept any interference, including interference that may cause undesired operation of the device

This equipment has been tested and found to comply with the limits for a Class B digital device, pursuant to part 15 of the FCC Rules.

These limits are designed to provide reasonable protection against harmful interference in a residential installation

This equipment generates, uses and can radiate radio frequency energy and, if not installed and used in accordance with the instructions, may cause harmful interference to radio communications. However, there is no guarantee that interference will not occur in a particular installation.

If this equipment does cause harmful interference to radio or television reception, which can be determined by turning the equipment off and on, the user is encouraged to try to correct the interference by one or more of the following measures:

Reorient or relocate the receiving antenna.

Increase the separation between the equipment and receiver. Connect the equipment into an outlet on a circuit

different from that to which the receiver is connected.

Consult the dealer or an experienced radio/TV technician for help

Caution: Any changes or modifications to this device not explicitly approved by manufacturer could void your authority to operate this equipment.

This device complies with part 15 of the FCC Rules. Operation is subject to the following two conditions:

1. This device may not cause harmful interference, and (2) this device must accept any interference received, including interference that may cause undesired operation.


including interference that may cause undesired operation.

This equipment complies with FCC radiation exposure limits set forth for an uncontrolled environment. This equipment should be installed and operated with minimum 20 cm between the radiator and your body. This transmitter must not be collocated or operating in conjunction with any other antenna or transmitter unless authorized to do so by the FCC.

Don't forget to take a moment to protect your purchase by registering your product now at the following address : [www.alpine-usa.com/registration](http://www.alpine-usa.com/registration).



## Documents / Resources

|                                                                                                                                                      |                                                                                                                                                                                                 |
|------------------------------------------------------------------------------------------------------------------------------------------------------|-------------------------------------------------------------------------------------------------------------------------------------------------------------------------------------------------|
|  <p>ALPINE<br/>Navigation Stick<br/>KTX-NS01<br/>Alpine Stick</p> | <p><a href="#">Alpine KTX-NS01 SB Plug In GPS Navigation</a> [pdf] Owner's Manual<br/>500KTXNS01, KTX-NS01 SB Plug In GPS Navigation, SB Plug In GPS Navigation, GPS Navigation, Navigation</p> |
|------------------------------------------------------------------------------------------------------------------------------------------------------|-------------------------------------------------------------------------------------------------------------------------------------------------------------------------------------------------|

## References

- [Alpine | Support](#)
- [Alpine - Gentec](#)
- [Alpine.com - Alpine Europe](#)
- [Alpine | Car Audio, Stereo, Speakers, Subwoofers, and Amps](#)
- [Alpine | Support](#)
- [OSS Info Alpine Electronics, Inc.](#)
- [User Manual](#)