



ALPINE IVE-W530BT Bluetooth Software Update User Guide

[Home](#) » [Alpine](#) » ALPINE IVE-W530BT Bluetooth Software Update User Guide 

Contents

- [1 ALPINE IVE-W530BT Bluetooth Software Update](#)
- [2 Product Information](#)
- [3 Introduction](#)
- [4 Preparing the Bluetooth Connection](#)
- [5 Updating the Bluetooth Firmware](#)
- [6 Confirming the update](#)
- [7 Documents / Resources](#)
 - [7.1 References](#)
- [8 Related Posts](#)



ALPINE IVE-W530BT Bluetooth Software Update



Product Information

Specifications

- **Model:** IVE-W530BT
- **Date of Release:** 15.01.2013
- **Operating System Compatibility:** Windows 7
- **Bluetooth Firmware Update Method:** File Transfer Profile (FTP)

Introduction

This manual provides instructions for updating the Bluetooth firmware of the IVE-W530BT Head Unit. It is important to read all warnings and steps carefully before performing the update to avoid any damage to the Head Unit.

Improvements

This update includes various improvements to enhance the Bluetooth functionality of the Head Unit.

Requirements

Before proceeding with the update, ensure that you have the following:

- A computer running Windows 7 operating system
- Broadcom Bluetooth Stack and Microsoft Bluetooth Enumerator installed on your computer
- An active internet connection

Caution

It is important to follow the instructions carefully when updating the Bluetooth firmware. Failure to do so may result in an incorrect update and potential damage to the Head Unit.

Notice

Please note that the Bluetooth firmware update procedure described in this manual is specifically for Windows 7 operating system with Broadcom Bluetooth Stack and Microsoft Bluetooth Enumerator.

Bluetooth Firmware Update Instructions

The following steps outline the process for updating the Bluetooth firmware using a Windows 7 computer:

Step 1: Downloading the Bluetooth Firmware Update

1. Go to the Alpine homepage of your region to download the Bluetooth firmware update file. You can find it at your local Alpine website at www.alpine-europe.com.

Step 2: Preparing the Bluetooth Connection

1. Turn ON the Head Unit by setting the vehicle's ignition to the Accessory (ACC) position.
2. Confirm that the necessary settings for the update are made:
 1. BLUETOOTH IN is set to HFP+AUDIO
 2. Visible Mode is set to ON
 3. All paired mobile phones are deleted

Follow these steps

1. Push the Setup button
2. Select System Setup
3. Push the Page DN button
4. Confirm that BLUETOOTH IN is set to HFP+AUDIO
5. Go back to Setup Sel. by pushing the back key
6. Select Source Setup, then Bluetooth Setup
7. Confirm that Visible Mode is set to ON
8. Enter the Clear Device menu
9. Click on a paired device
10. If there are no paired devices, skip this section
11. Confirm by pushing Yes
12. Repeat step 9&10 with other paired devices until the list is empty

Step 3: Creating a Bluetooth Pairing between the PC and Head Unit

1. From the Windows 7 taskbar, select Start > Control Panel

> Devices and Printers

2. Select Add a Device

A new window will open, and Windows will start to search for Bluetooth devices

3. Select the device "Alpine AV Receiver", then click Next
4. Confirm that the code is the same by pressing Next/Yes on both devices
5. Select Close on the Add a device window (depending on the version, this dialog might not be shown)
6. In the Devices and Printers window, right-click Alpine AV Receiver and select Properties
7. Select the Services tab
8. Confirm that the Headset service is NOT checked and that all other services are checked

Close the window by pushing the OK

Step 4: Updating the Bluetooth Firmware

1. Double-click Alpine AV Receiver in the Devices and Printers window
2. Click on Alpine AV Receiver in the Bluetooth Device Control window
3. A window will open containing 2 folders named “recorder” and “update”. Click the “update” folder to open it.

FAQ

- **Q: Can I perform the Bluetooth firmware update on a different operating system?**
 - A: No, the Bluetooth firmware update procedure provided in this manual is specifically for Windows 7 operating system with Broadcom Bluetooth Stack and Microsoft Bluetooth Enumerator.
- **Q: What should I do if I encounter any issues during the update process?**
 - **A:** If you encounter any issues during the update process, refer to the troubleshooting section of the user manual or contact Alpine customer support for further assistance.

Introduction

This manual describes the steps required for updating the Head Units Bluetooth firmware. Read all warnings and steps carefully before performing the update.

Improvements

The update improves the following points:

- The Head Units compatibility will be improved from AVRCP1.3 to AVRCP1.4
- Compatibility with new mobile phones.
- iOS6 Bluetooth Audio – displaying the tag information on the Head Unit
- iOS6 Bluetooth Audio – ability to control the iPhone’s music player from the Head Unit

Requirements

- A Windows 7 computer with Bluetooth connectivity. This includes built-in Bluetooth adapters or external USB Bluetooth adapters.
- The Bluetooth adapter must support File Transfer Profile (FTP).
- The Bluetooth firmware update file (Alpine provided).
- An internet connection during pairing process (automatic driver download)

Caution

- Do NOT update the Bluetooth firmware while driving.
- Do NOT turn off the vehicle or remove power from the Head Unit while the unit is updating. The update will not be performed correctly and the Head Unit may be damaged.

Notice

- Updating will result in all user information being deleted, including user settings, paired devices, and phonebook contacts.
- Please contact Alpine Technical Support of your country with any questions concerning the update process.

Bluetooth Firmware Update Instructions

The Bluetooth firmware update procedure uses a Bluetooth feature known as File Transfer Profile (FTP) to wirelessly transfer the update file from the PC to the Head Unit. This manual describes the update process performed using the Windows 7 operating system (Broadcom Bluetooth Stack and Microsoft Bluetooth Enumerator).

Downloading the Bluetooth Firmware Update

Go to the Alpine homepage of your region to download the Bluetooth firmware update file to the computer that will be used to perform this update. You can find it at your local Alpine website at www.alpine-europe.com

Preparing the Bluetooth Connection

- **WARNING** – Do not update the Bluetooth firmware while driving
 - Turn ON the Head Unit by setting the ignition of the vehicle to the Accessory (ACC) position.
 - Confirm that the necessary settings for the update are made, such as
1. “BLUETOOTH IN” is set to “HFP+AUDIO”
 2. “Visible Mode” is set to “ON”
 3. All paired mobile phones are deleted



1. Push the "Setup" button
2. Select "System Setup"
3. Push the "Page DN" button
4. Confirm that "BLUETOOTH IN" is set to "HFP+AUDIO"
5. Go back to "Setup Sel." by pushing the "back" key
6. Select "Source Setup", then "Bluetooth Setup"

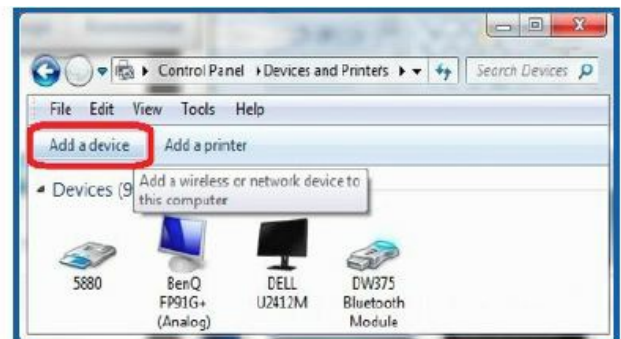
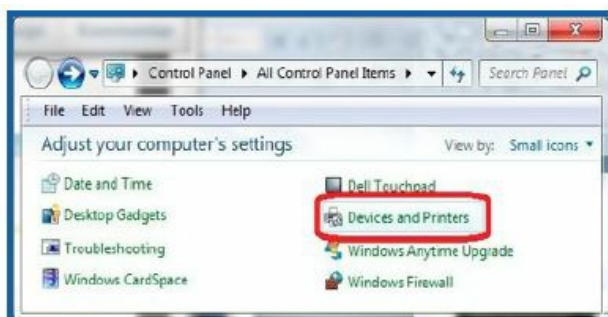


In case there is no paired device, you will not be able to enter this menu. In that case skip this section.



7. Confirm that "Visible Mode" is set to ON.
8. Enter the "Clear Device" menu.
9. Click on a paired device.
10. Confirm by pushing "Yes"

Creating a Bluetooth Pairing between the PC and Head Unit



A new window will open, and Windows will start to search for BT devices

1. From the Windows 7 taskbar select
 - "Start" > "Control Panel" >
 - "Devices and Printers"
2. Select "Add a Device"



devices



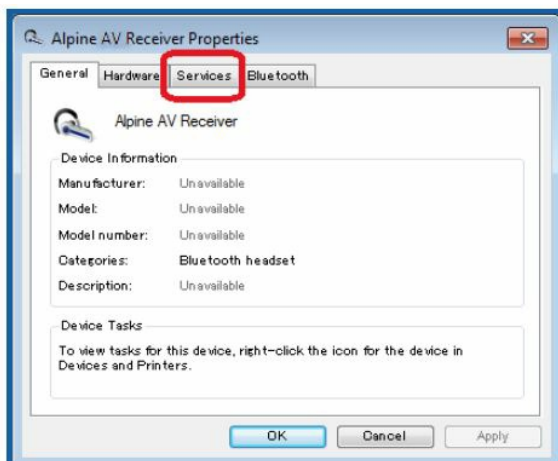
Depending on the version this dialog might not be shown.



Depending on your Windows version, Windows might download drivers for the newly added device via Windows Update



3. Select the device "Alpine AV Receiver", then click "Next"
4. Confirm that the code is the same by pressing "Next/Yes" on both devices
5. Select Close on the "Add a device" window.
6. In the "Devices and Printers" window
 - right-click "Alpine AV Receiver" and
 - select "Properties"



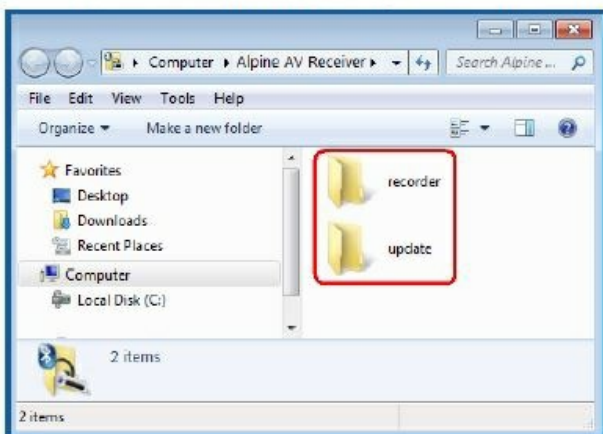
Close the window by pushing "OK"

7. Select the "Services" tab
8. Confirm that "Headset service" is
 - NOT checked and that all other

- services are checked, as displayed

Updating the Bluetooth Firmware

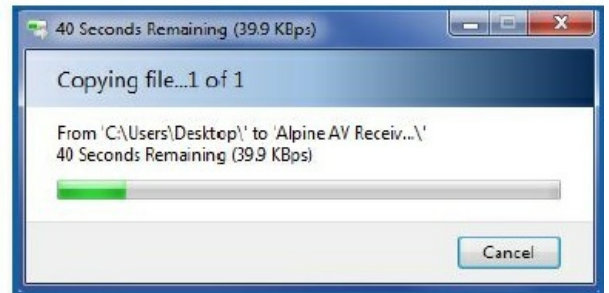
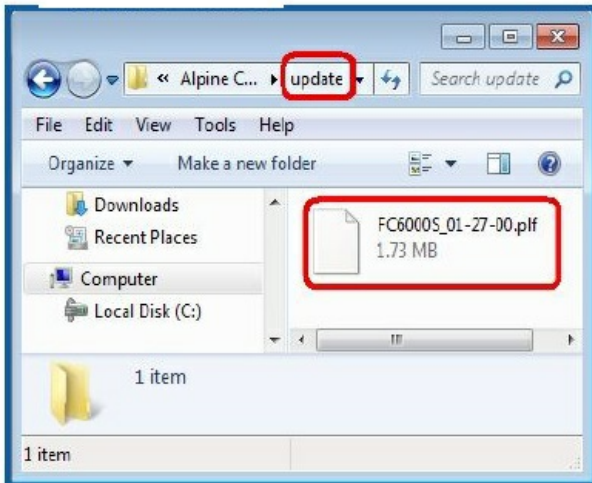
WARNING – Do NOT turn off the vehicle or remove power from the Head Unit while the unit is updating. The update will not be performed correctly and the Head Unit may be damaged.



1. Double-click "Alpine AV Receiver" in the "Devices and Printers" window.
2. Click on "Alpine AV Receiver" in the "Bluetooth Device Control" window
3. A window will open containing 2 folders named "recorder" and "update". Click the "update" folder to open it.
4. In the "BLUETOOTH Setup" push the "Page down" button



5. Select "Firmware Update"
6. Select "YES", twice



7. Select "YES", if you are sure you want to update
8. Now the IVE-W530BT is waiting for the update file.
9. Now "Drag&Drop" the
 - "FC6000S_01-27-00.plf" into the
 - "update" folder.
10. During transmission, this progress bar will be displayed
 - Even though the progress bar is completed after 40 seconds, the update can take up to 5 minutes. Please do not interrupt the update process.



11. After the update has successfully finished, IVE-W530BT will show this message

Confirming the update



1. In the “Bluetooth Setup” menu, push “Firmware Version”
2. Confirm that the displayed version number is the same as your download file

ALPINE ELECTRONICS GmbH

- Wilhelm-Wagenfeld-Straße 1-3, 80807 München, Germany
- Phone 089-32 42 640

ALPINE ITALIA S.p.A.

- Viale C. Colombo 8, 20090 Trezzano
- Sul Naviglio (MI), Italy
- Phone 02-484781

ALPINE ELECTRONICS OF U.K., LTD.

- Alpine House
- Fletchamstead Highway, Coventry CV4 9TW, U.K.
- Phone 0870-33 33 763


ALPINE ELECTRONICS DE ESPAÑA, S.A.

- Portal de Gamarra 36, Pabellón, Pabellón, 32
- 01013 Vitoria (Alava)-APDO 133, Spain
- Phone 945-283588

ALPINE ELECTRONICS FRANCE S.A.R.L.

- (RCS PONTOISE B 338 101 280) 98, Rue de la Belle Etoile, Z.I. Paris Nord II, B.P 50016, 95945 Roissy Charles De Gaulle
- Cedex, France
- Phone 01-48638989

Documents / Resources

	<p>ALPINE IVE-W530BT Bluetooth Software Update [pdf] User Guide IVE-W530BT Bluetooth Software Update, IVE-W530BT, Bluetooth Software Update, Software U pdate</p>
---	---

References

- [Alpine.com - Alpine Europe](#)
- [Manual-Hub.com - Free PDF manuals!](#)
- [User Manual](#)

Manuals+. Privacy Policy

This website is an independent publication and is neither affiliated with nor endorsed by any of the trademark owners. The "Bluetooth®" word mark and logos are registered trademarks owned by Bluetooth SIG, Inc. The "Wi-Fi®" word mark and logos are registered trademarks owned by the Wi-Fi Alliance. Any use of these marks on this website does not imply any affiliation with or endorsement.