



## ALPINE Update Procedure for Software Instructions

[Home](#) » [Alpine](#) » **ALPINE Update Procedure for Software Instructions** 



INE-F904DC / X903DC / X803DC / INE-W720DC Seriesmap 2020/06 and software update procedure

Update procedure for software version 1.000 / 1.070 and 1.200 Check "Firmware Version" in Setup: → General → About → Firmware Version

If your Firmware Version is 1.3021, please follow the instruction "UG\_INE-F904x\_ X903x\_X803x\_X703x\_INE-W720x\_camperMAP\_13021\_Instruction\_EN.pdf" version.

The map 2020/06 and firmware can be updated with only one USB device and requires three update phases. First, please download the "2020-06\_camperMAP\_Audio.zip" and follow the instructions. The INE-F904DC / X903DC / X803DC / INE-W720DC can be updated via USB connection (see connection diagram below). Before starting the update, please check the following notes. The download file is compressed in zip format. The contents of the download need to be extracted to a freshly formatted USB device (FAT32). The update takes 35 to 45 minutes.

Update file contents/storage place (for all type of units)

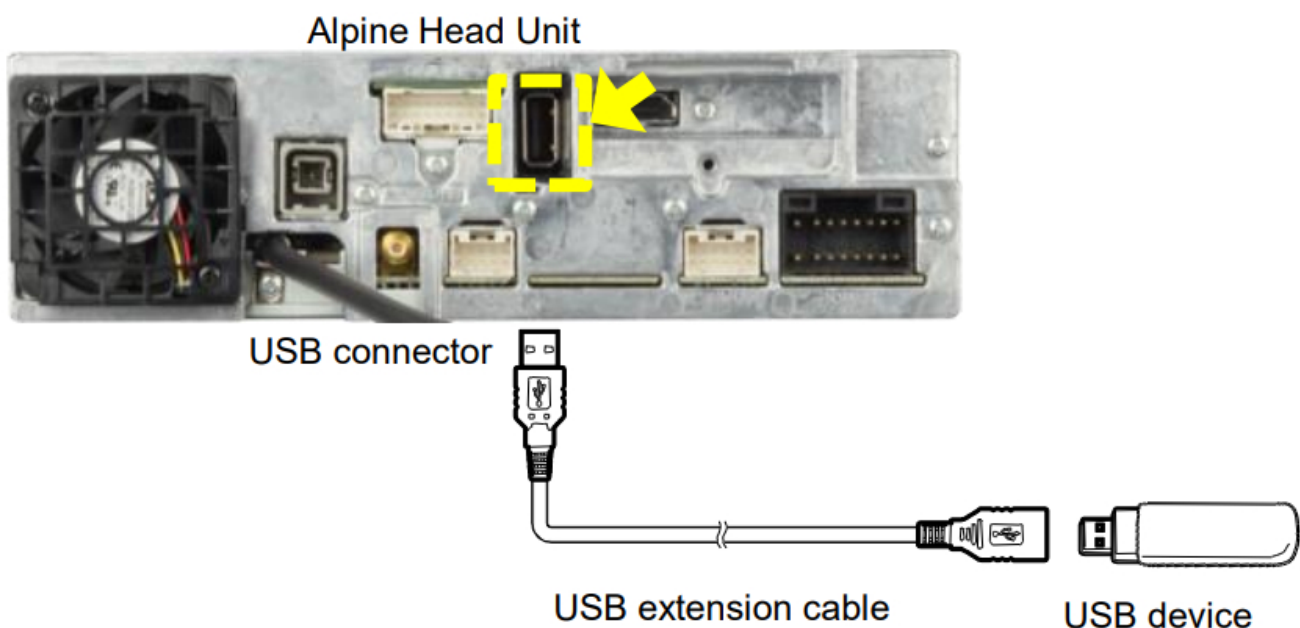
	Name	Größe	Typ	Änderungsdat...
➤ Schnellzugriff				
➤ OneDrive - ALPSGROUP				
➤ Dieser PC				
▼ USB-Laufwerk (I:)				
NE00035A	buprog.bin	1.536 KB	BIN-Datei	11.06.2021 16:45
NE00036A	imxapsw.img	56.795 KB	Datenträgerimagedatei	19.10.2020 03:17
NE00040A	imxapswupd.img	88 KB	Datenträgerimagedatei	19.10.2020 03:17
NE00041A	imxbl.img	230 KB	Datenträgerimagedatei	19.10.2020 03:17
	imxdbt.img	52 KB	Datenträgerimagedatei	19.10.2020 03:17
	imxdbtupd.img	52 KB	Datenträgerimagedatei	19.10.2020 03:18
	imxgpsw.img	38.734 KB	Datenträgerimagedatei	19.10.2020 03:18
	imxgpswupd.img	19.809 KB	Datenträgerimagedatei	19.10.2020 03:19
	imxkern.img	3.007 KB	Datenträgerimagedatei	19.10.2020 03:19
	imxkernupd.img	3.007 KB	Datenträgerimagedatei	19.10.2020 03:19
Netzwerk	order.apn	1 KB	APN-Datei	19.10.2020 03:20
	orderupd.apn	1 KB	APN-Datei	19.10.2020 03:20

## Notes

- Do NOT use the compressed file for updates, otherwise, the Unit cannot recognize the files.
- Do NOT change folder names and file names, otherwise, the Unit cannot recognize the files.
- Do NOT store the folder inside another folder.
- Do NOT store any other folders/files on the USB device.
- Do NOT remove the USB device while updating.
- Do NOT update while driving.
- Do NOT press any buttons while updating.
- Do NOT turn off the vehicle's ignition or head unit's power switch while updating.

Modern vehicles will shut down the ignition (ACC) after some time if the engine is not running.  
If you are not sure if this applies to your car, leave the engine idling while the update is in progress.

## Connection

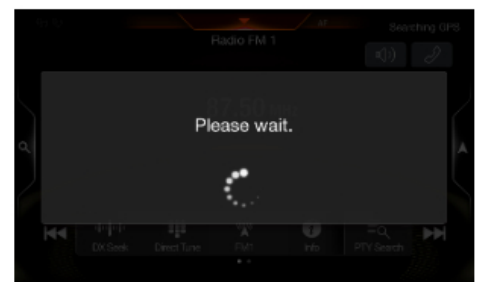
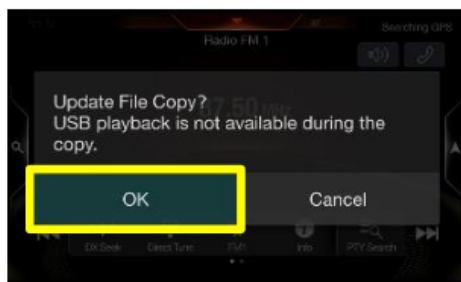


## Install update software (phase 1)

1. Store the downloaded and extracted files „2020-06\_camperMAP\_Audio.zip” on the empty USB device in the Root Folder (see left figure).
2. Connect the USB device to the USB connector of the Alpine Head Unit. Please see the lower left figure.

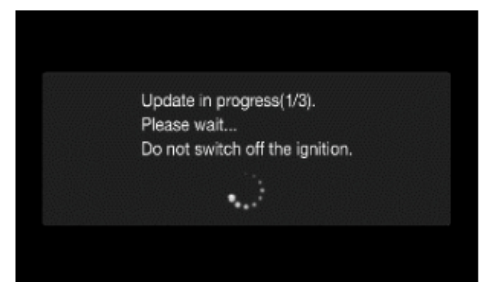
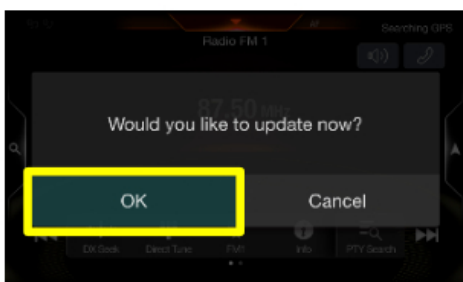


3. Press “OK” button when update message appears on the screen.



“Please wait” can take up to 20 seconds.

4. Press “OK” button again when next update message appears on the screen.



Update will be completed in around 4 minutes.  
“Update in progress” steps are: “1/3 → 2/3 → 3/3”

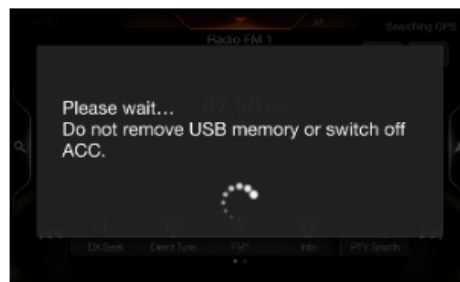
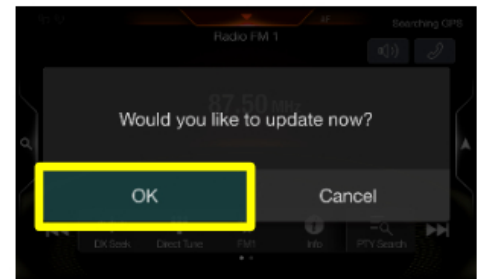
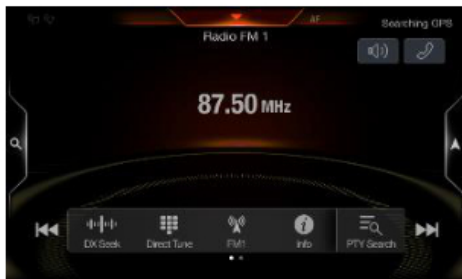
5. After the first phase of the software update is complete, your Alpine Head Unit will restart automatically.  
The USB device **remains** in the Alpine Head Unit



Alpine Electronics, Inc.

Install map update (phase 2)

6. Then the second phase of the software update takes place. Press the “OK” button when an update message appears on the screen. The process will now install the new map data and navigation application data to your Alpine Head Unit.



Update will be completed in around 30 minutes.

7. The new map data and navigation application is loaded successfully when your Alpine Head Unit restarts automatically.

The USB device **remains** in the Head Unit.

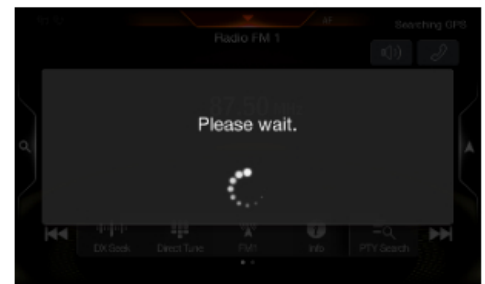
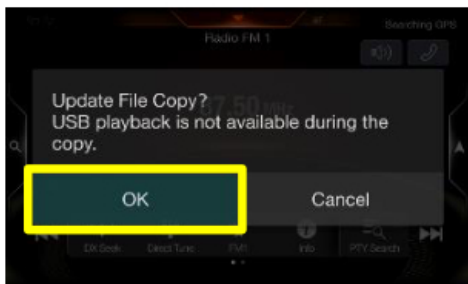


→ Go to no. 8.

Install update software (phase 3)

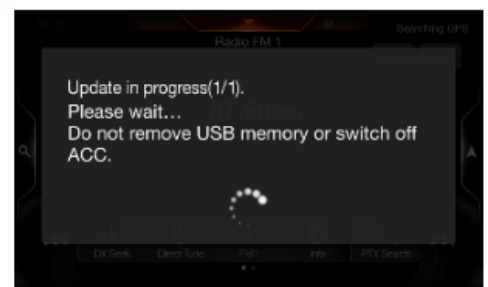
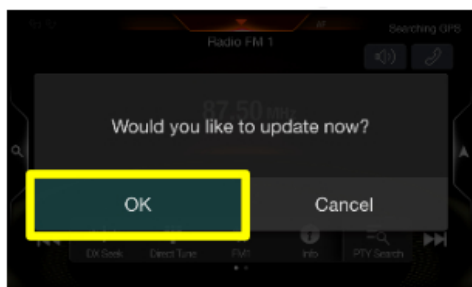
8. Then the third phase of the software update takes place.

Press “OK” button when update message appears on the screen. The process will now install the BU-com audio update (last part) to your Alpine Head Unit.



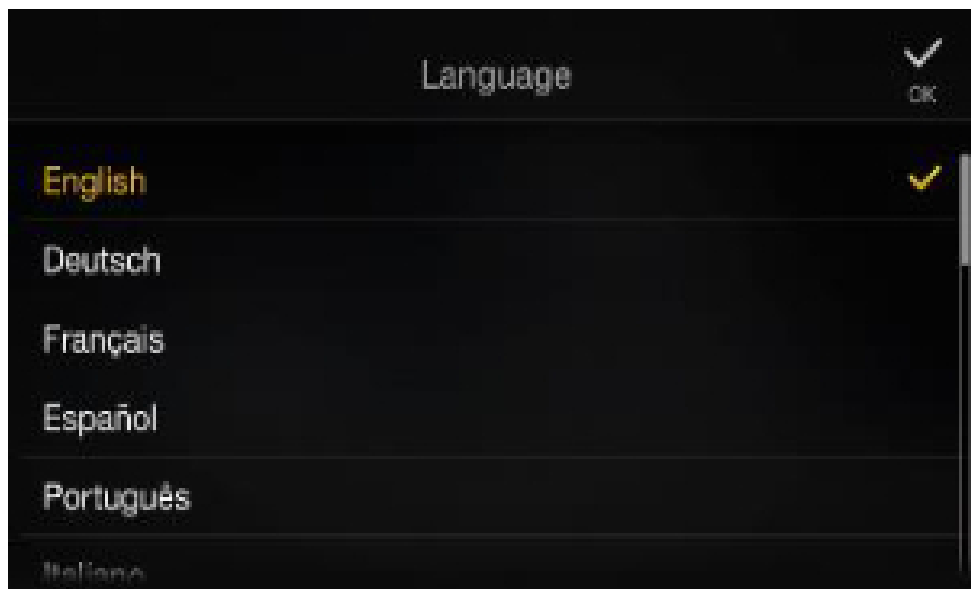
“Please wait” can take up to 20 seconds.

9. Press “OK” button again when next update message appears on the screen.



Update will be completed in around 3 minutes.

10. When the BU-com audio update is finished, the Alpine Head Unit will reboot automatically in “Language” select screen.



11. Remove the USB device from Alpine Head Unit.
12. Select your language and press “OK”.
13. Check “Firmware Version” in Setup: → General → About → Firmware Version

If the “Firmware Version” number is displayed as:

INE-F904DC, INE-F904DU, INE-F904S907 / -F904TRA, X903DC-F, X903D-DU/-DU2, X903D-ID, X903D-S906,X803DC-U,INE-W720DC:

“1.3021.1.3021.1.3021” in the SETUP menu of the Alpine Head Unit, this update procedure has been successful.

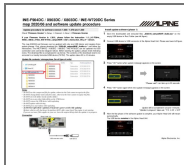


14. Check “Map Version” in Navigation → Information → About → Content → Maps If “Map Version” has changed to: “... 2020.06”, this map update procedure has been successful.Alpine Electronics, Inc.

## Contents

- [1 Documents / Resources](#)
- [2 Related Posts](#)

## Documents / Resources



[ALPINE ALPINE Update Procedure for Software](#) [pdf] Instructions  
ALPINE, Update Procedure for Software, NE-F904DC, X903DC, X803DC, INE-W720D