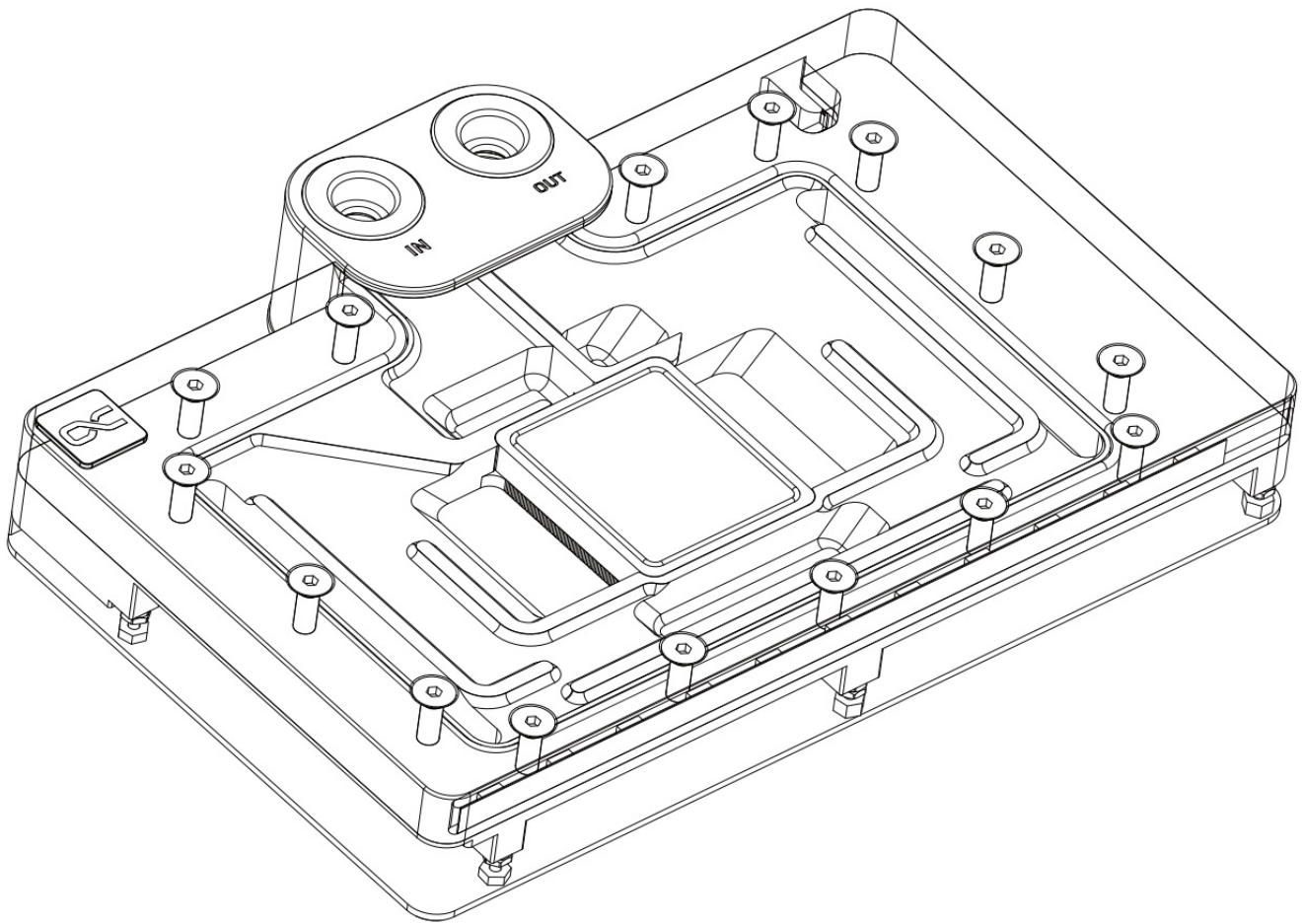


## **Alphacool RTX 4080 Eisblock Aurora Acryl Reference Design with Backplate Instruction Manual**

[Home](#) » [ALPHACOOOL](#) » Alphacool RTX 4080 Eisblock Aurora Acryl Reference Design with Backplate Instruction Manual 

**Alphacool RTX 4080 Eisblock Aurora Acryl Reference Design with Backplate**



## Contents

- 1 [Safety instructions](#)
- 2 [Digital guide](#)
- 3 [Accessories](#)
- 4 [Check compatibility and prepare graphics card](#)
  - 4.1 [Prepare graphics card](#)
- 5 [Remove spacers](#)
- 6 [Place thermal pads on cooling block](#)
- 7 [Apply Thermal Grease](#)
- 8 [Install PCB](#)
- 9 [Place thermal pads on PCB backside](#)
- 10 [Mount PCI bracket and backplate](#)
- 11 [Connect ARGB lighting](#)
- 12 [Screw in screw plugs with the tool](#)
- 13 [Customer Support](#)
- 14 [Documents / Resources](#)
- 15 [Related Posts](#)



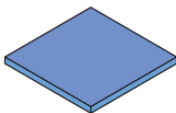
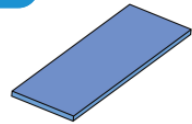

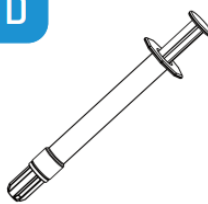
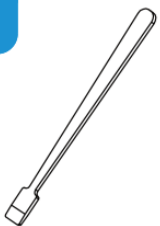
**Safety instructions**

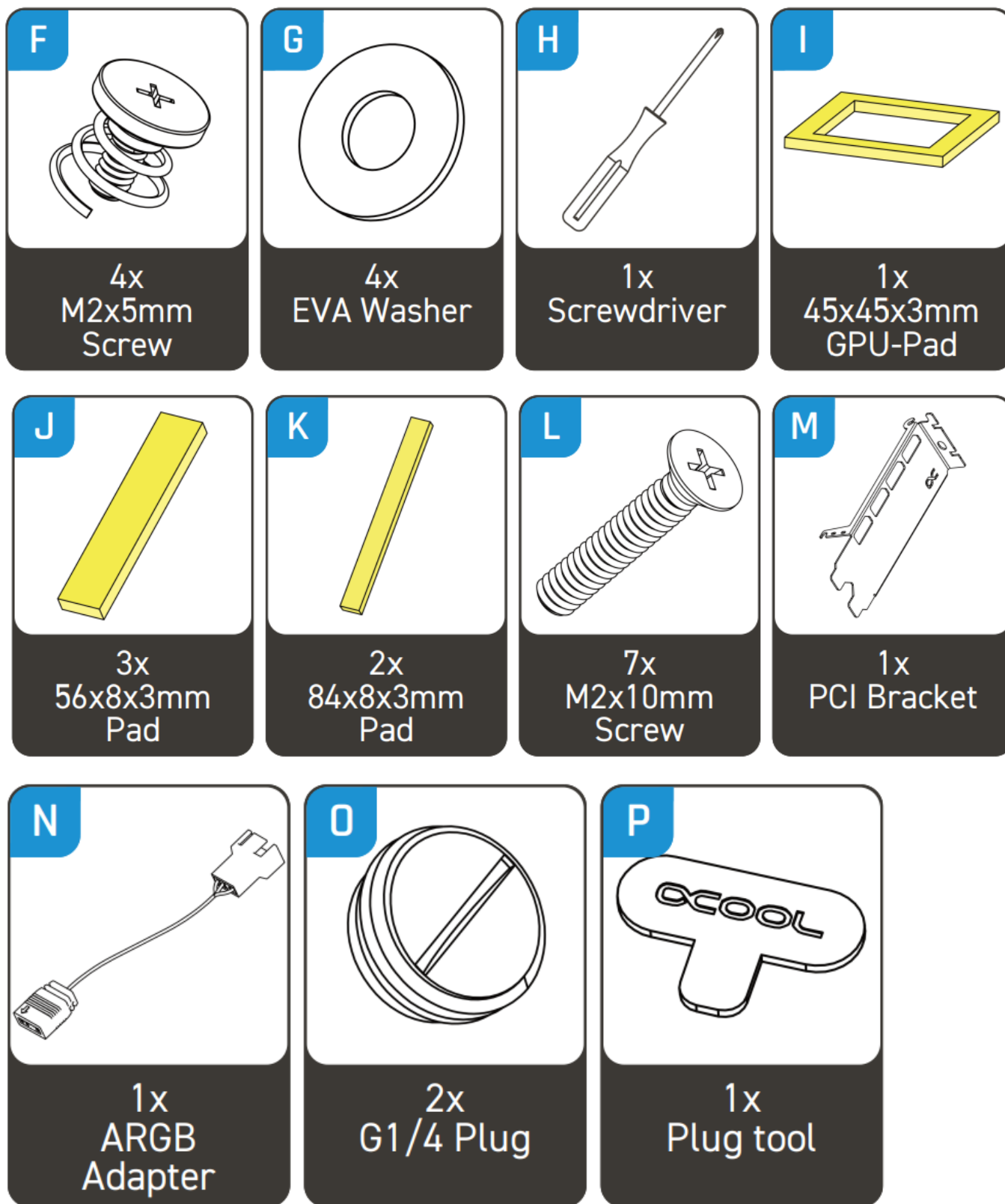


Digital guide



## Accessories

<b>A</b>  4x 8x8x1mm Pad	<b>B</b>  3x 40x15x1mm Pad	<b>C</b>  2x 84x8x1mm Pad	<b>D</b>  1x Thermal Grease	<b>E</b>  1x Putty tool
---	---	--	--	---



## Check compatibility and prepare graphics card

### Check compatibility

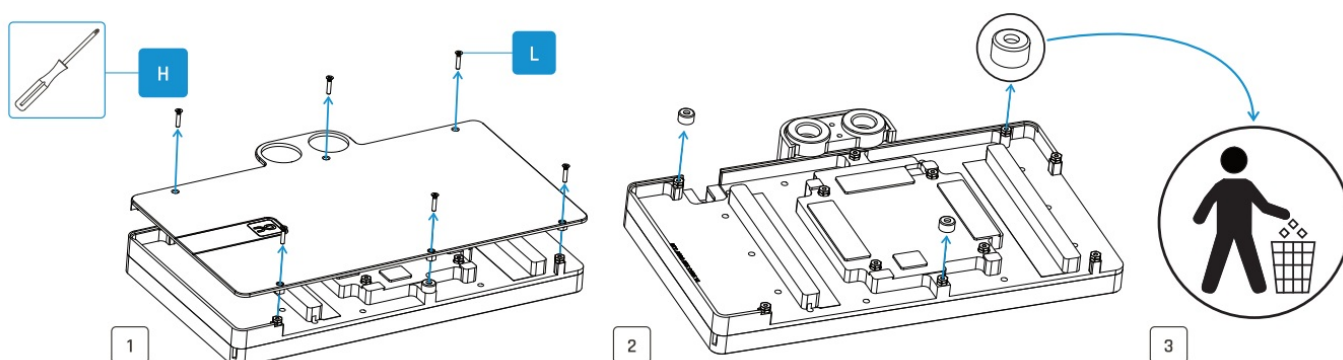
Before starting the cooler assembly, compare your card with the pictures in our configurator. To do so, visit <https://www.hwconfig.com> and search for your graphics card or cooler model. For a definitive identification, you can also compare the PCB number. The cooler was designed for a special PCB layout. Occasionally, graphics card manufacturers may revise the design of their card slightly, causing the cooler not to fit on later models. During assembly, please make sure taller parts have enough space around them and that the cooler does not damage your graphics card.

Alphacool International GmbH is not liable for assembly errors occurring due to negligence, such as selecting an incompatible cooler.

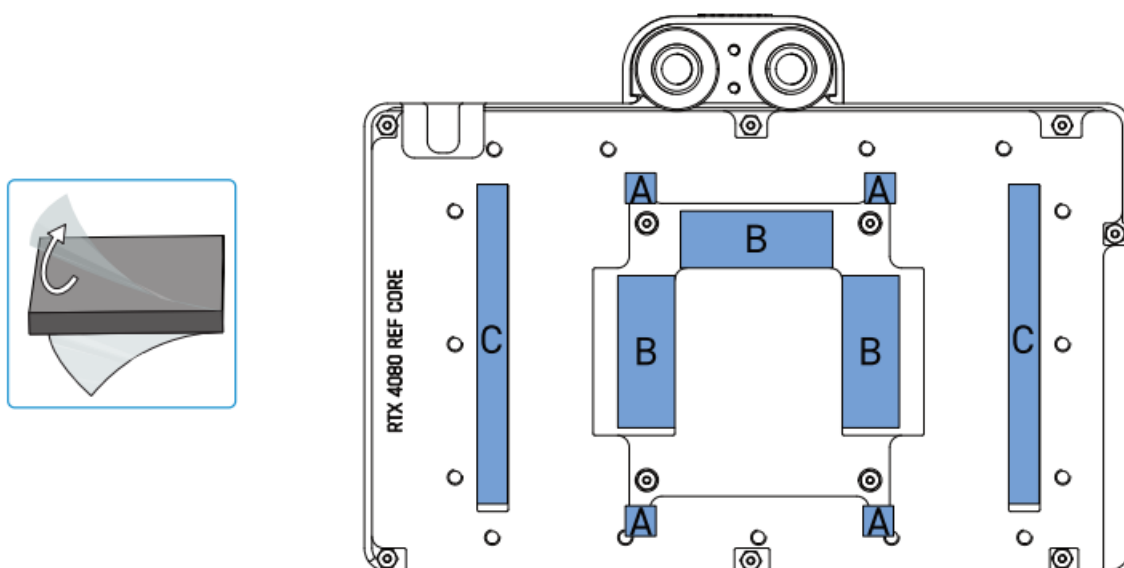
### Prepare graphics card

Put the hardware on an antistatic mat. Begin dismantling the original cooler. Depending on the structure of the cooler, remove the screws at the back of the card and carefully unhook the fan connector first. If the original cooler uses thermal glue, extreme care should be taken as you can easily damage parts. Pick up all the items carefully. Next, clean the hardware of thermal paste or pad residues with a solvent (e.g. isopropanol alcohol).

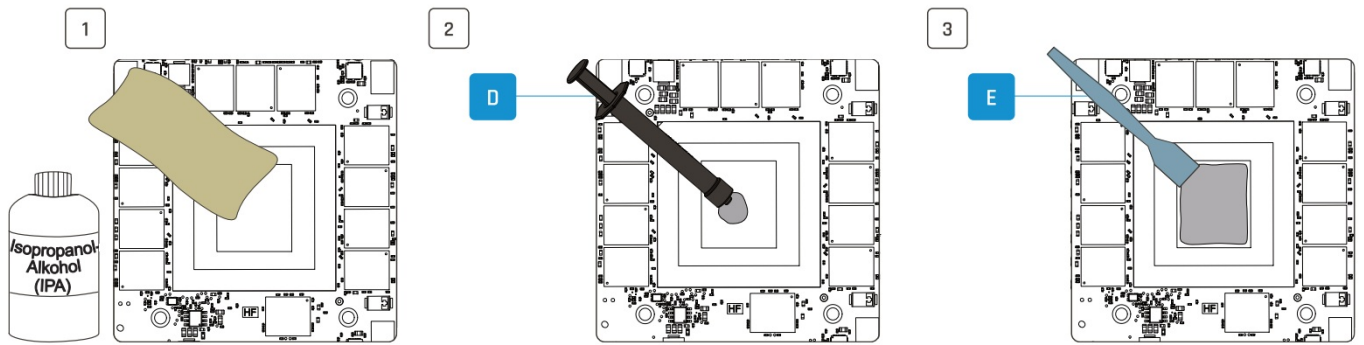
### Remove spacers



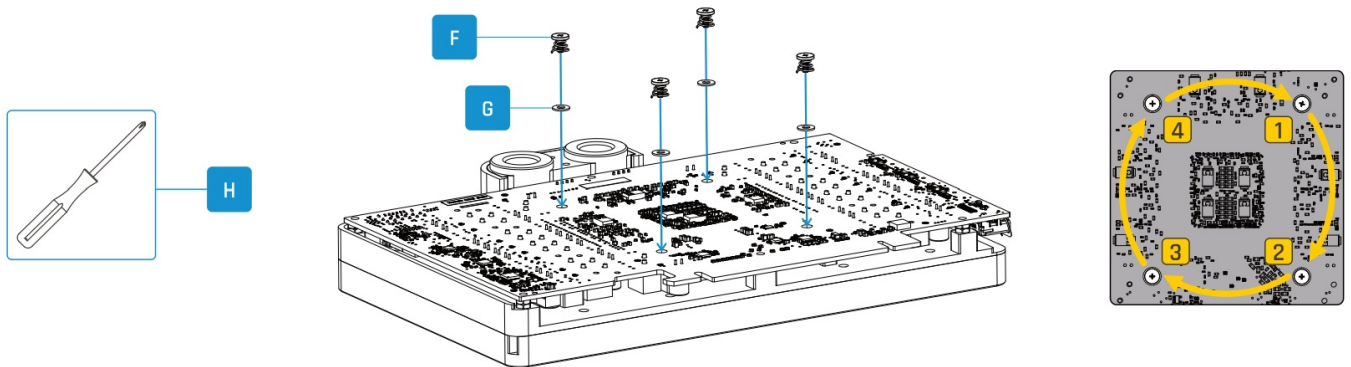
### Place thermal pads on cooling block



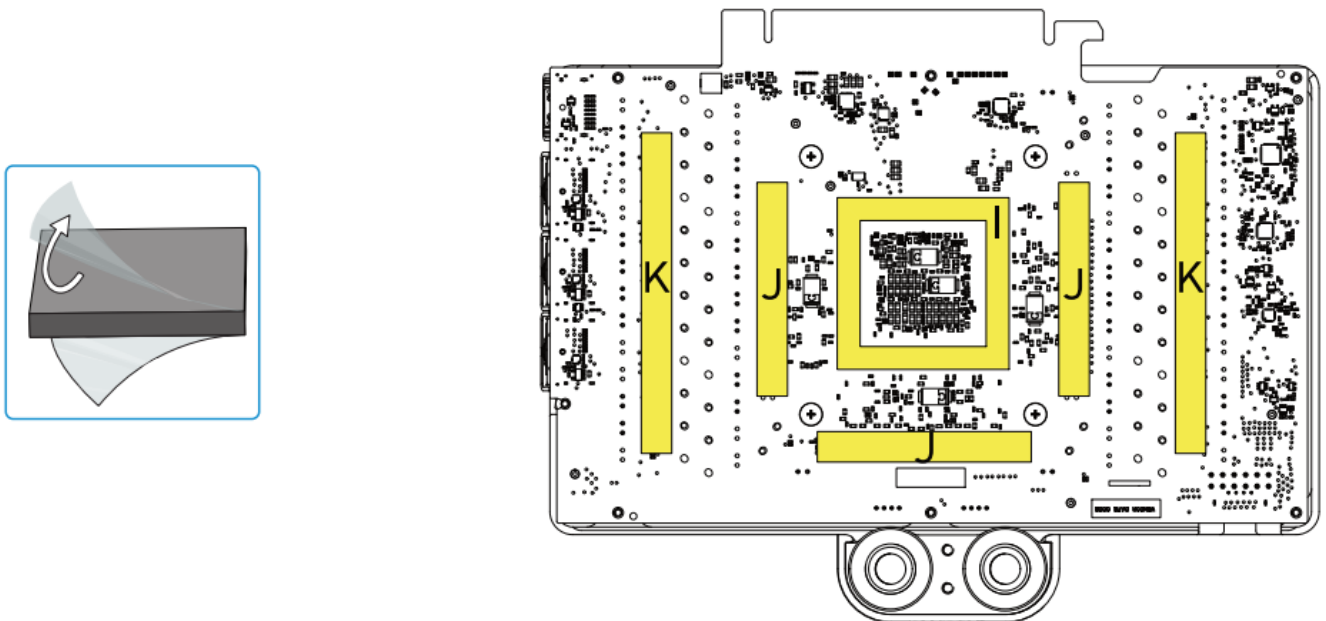
### Apply Thermal Grease



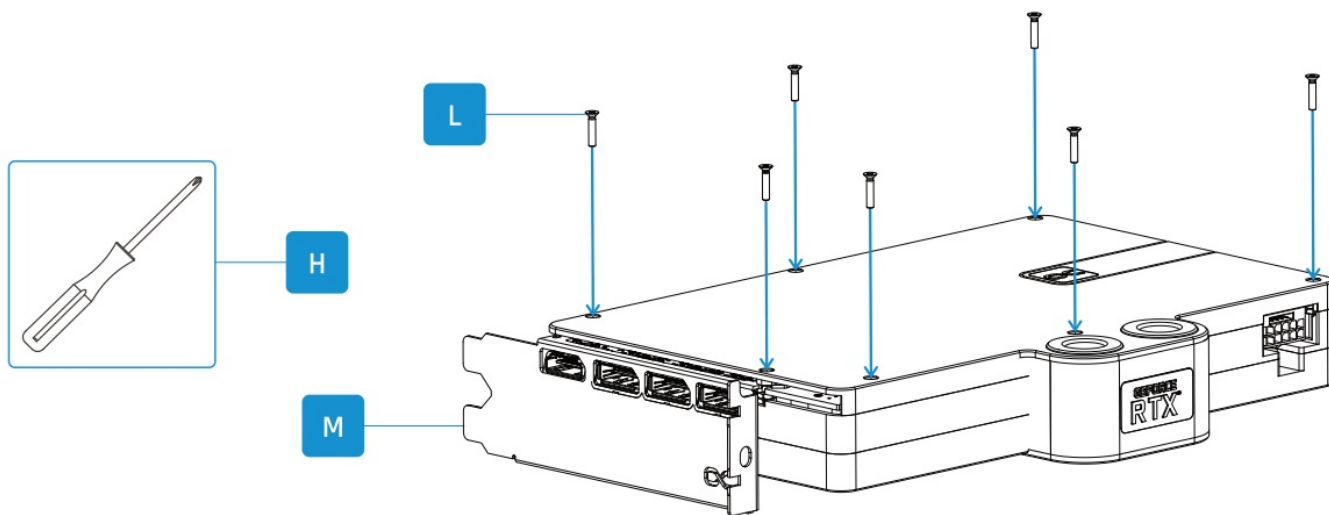
## Install PCB



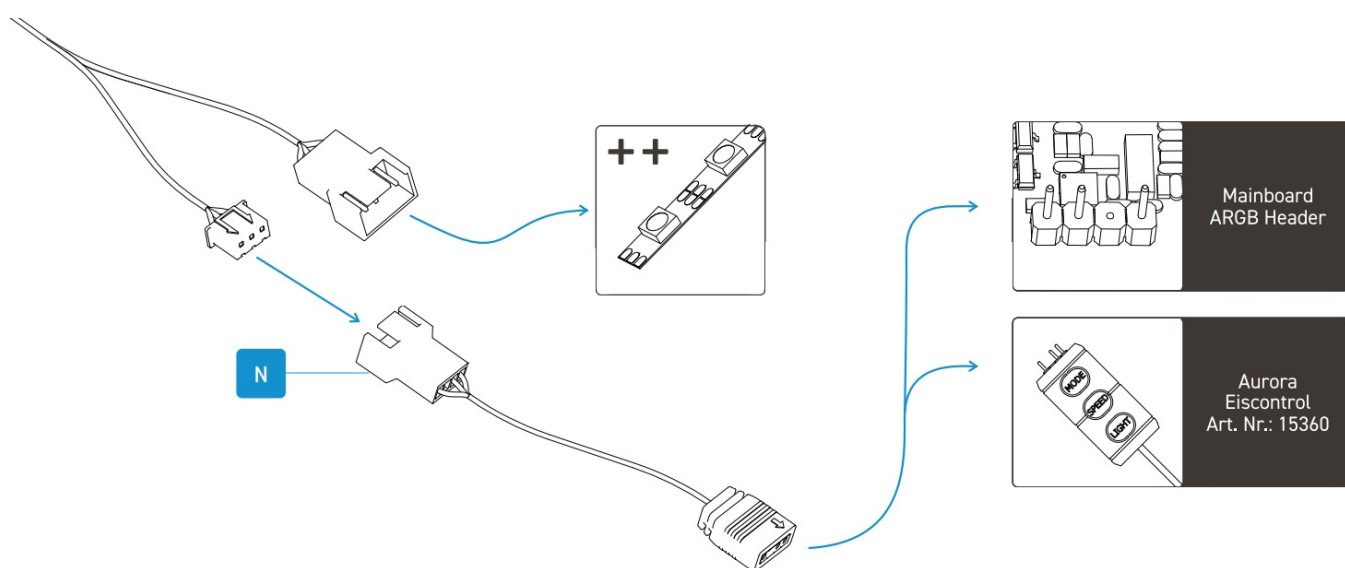
## Place thermal pads on PCB backside



## Mount PCI bracket and backplate

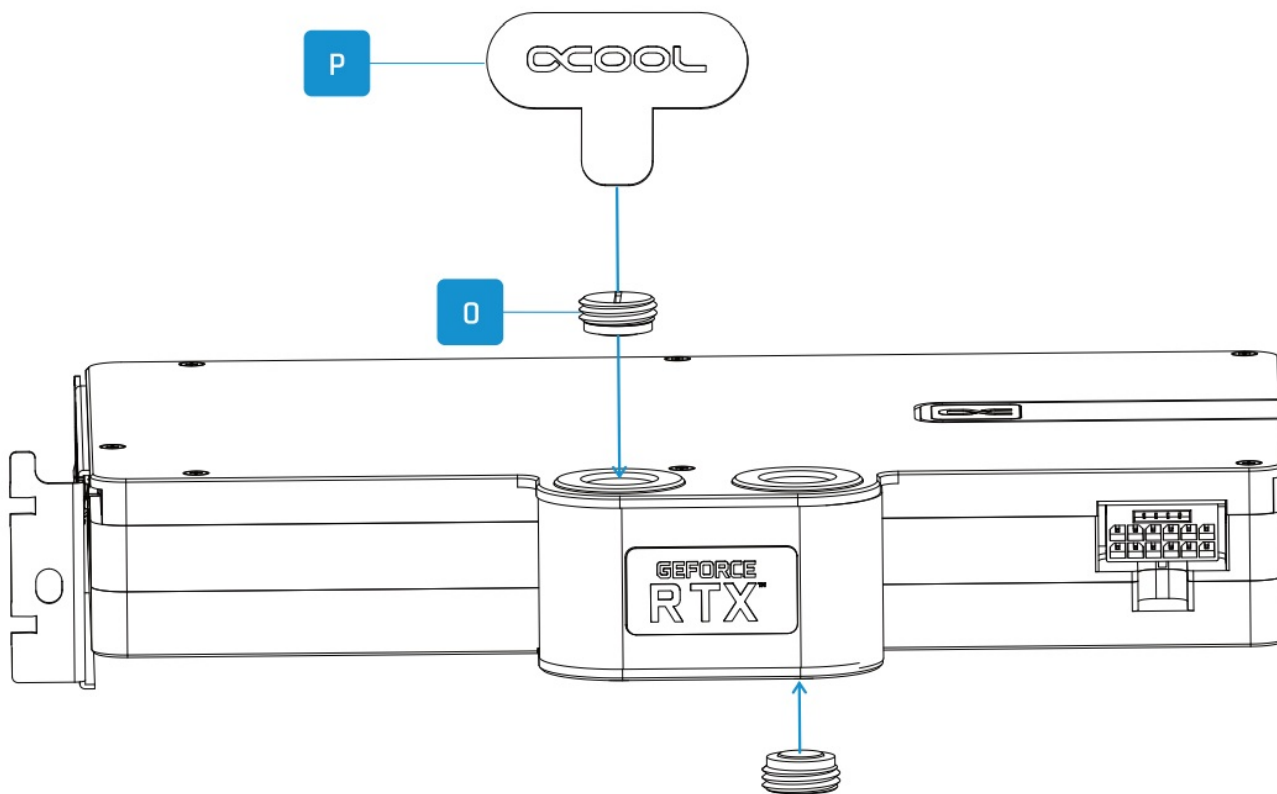


## Connect ARGB lighting



## Screw in screw plugs with the tool





## Customer Support

Need help?



Alphacool International GmbH  
Marienberger Str. 1  
D-38122 Braunschweig  
Germany

**Support:** +49 (0) 531 28874-0

**Fax:** +49 (0) 531 28874 – 22

**E-Mail:** [info@alphacool.com](mailto:info@alphacool.com)

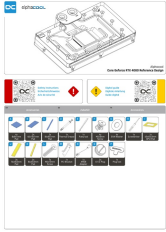
<https://www.alphacool.com>



alphacool

Documents / Resources





[Alphacool RTX 4080 Eisblock Aurora Acryl Reference Design with Backplate](#) [pdf] Instruction Manual  
RTX 4080, RTX 4080 Eisblock Aurora Acryl Reference Design with Backplate, Eisblock Aurora Acryl Reference Design with Backplate, Aurora Acryl Reference Design with Backplate, Acryl Reference Design with Backplate, Reference Design with Backplate, Design with Backplate, Backplate