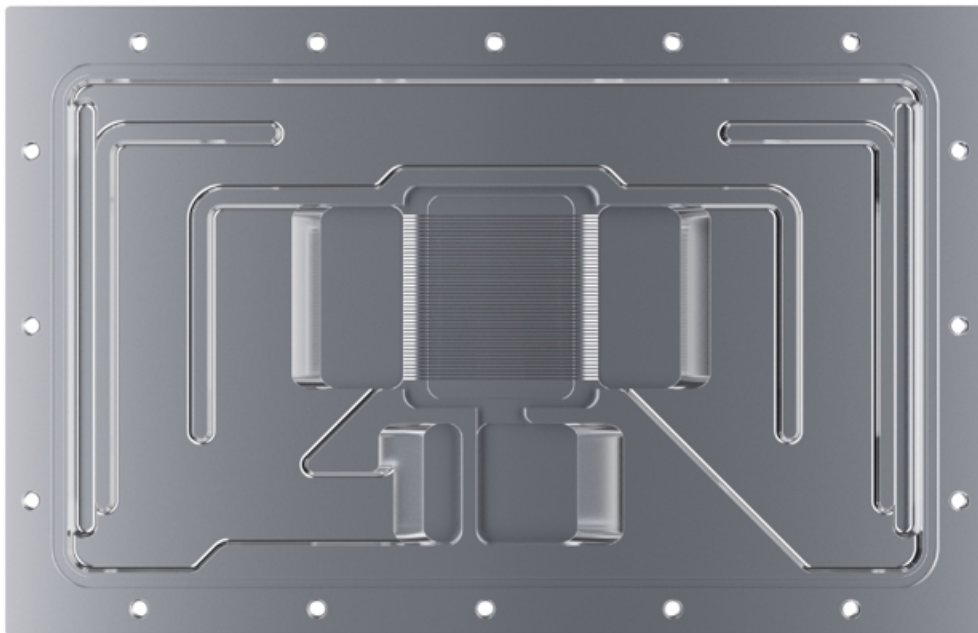


alphacool RTX 4070Ti Eisblock Aurora Ventus with Backplate Instruction Manual

[Home](#) » [ALPHACOOL](#) » alphacool RTX 4070Ti Eisblock Aurora Ventus with Backplate Instruction Manual 



Instruction Manual



Alphacool
RTX 4070Ti ROG Strix 12G Gaming

Contents

- [1 RTX 4070Ti Eisblock Aurora Ventus with Backplate](#)
- [2 Accessories](#)
- [3 Install PCB](#)
- [4 Connect ARGB lighting](#)
- [5 Documents / Resources](#)
 - [5.1 References](#)

RTX 4070Ti Eisblock Aurora Ventus with Backplate



<https://www.alphacool.com/m/safety.pdf>



Safety instructions



Digital guide



<https://www.alphacool.com/m/?acg=1055>

Accessories

A  1x 25x15x1mm Pad	B  2x 40x15x1mm Pad	C  1x 70x8x1mm Pad	D  1x 110x8x1mm Pad	E  1x Thermal Grease	F  1x Putty tool	G  4x EVA Washer	H  4x M2x5mm Screw	I  1x 45x45x3mm GPU-Pad
J  2x 40x15x3mm Pad	K  1x 81x8x3mm Pad	L  1x 110x8x3mm Pad	M  1x 25x15x3mm Pad	N  1x 20x8x3mm Pad	O  4x M2x11mm Screw	P  1x ARGB Adapter	Q  1x Plug tool	R  2x G1/4 Plug

Check compatibility and prepare graphics card

Check compatibility

Before starting the cooler assembly, compare your card with the pictures in our configurator.

To do so, visit <https://www.hwconfig.com> and search for your graphics card or cooler model.

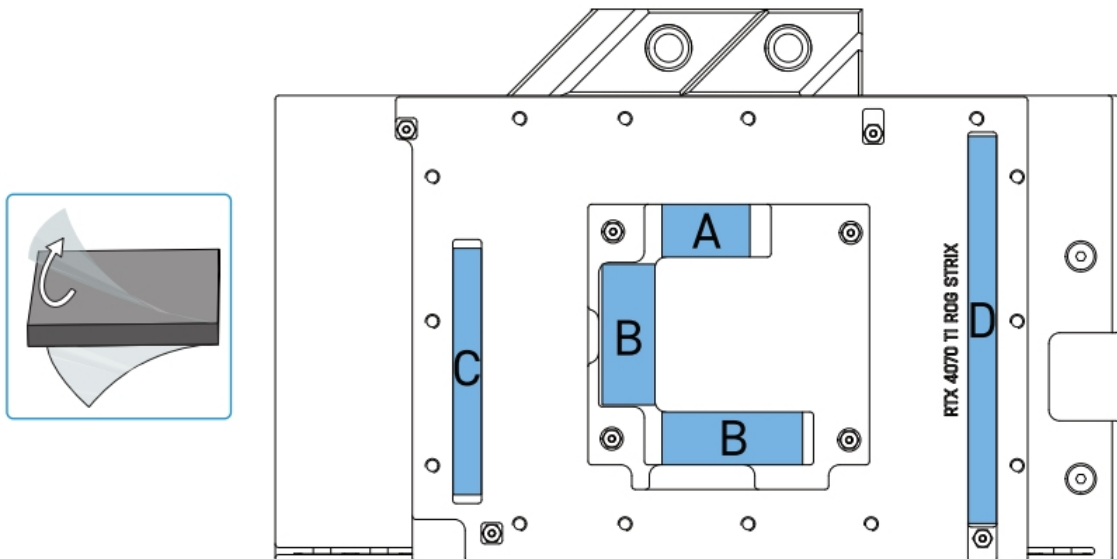
For a definitiv identification, you can also compare the PCB number. The cooler was designed for a special PCB layout. Occasionally, graphics card manufacturers may revise the design of their card slightly, causing the cooler not to fit on later models. During assembly, please make sure taller parts have enough space around them and that the cooler does not damage your graphics card.

Alphacool International GmbH is not liable for assembly errors occurring due to negligence, such as selecting an incompatible cooler.

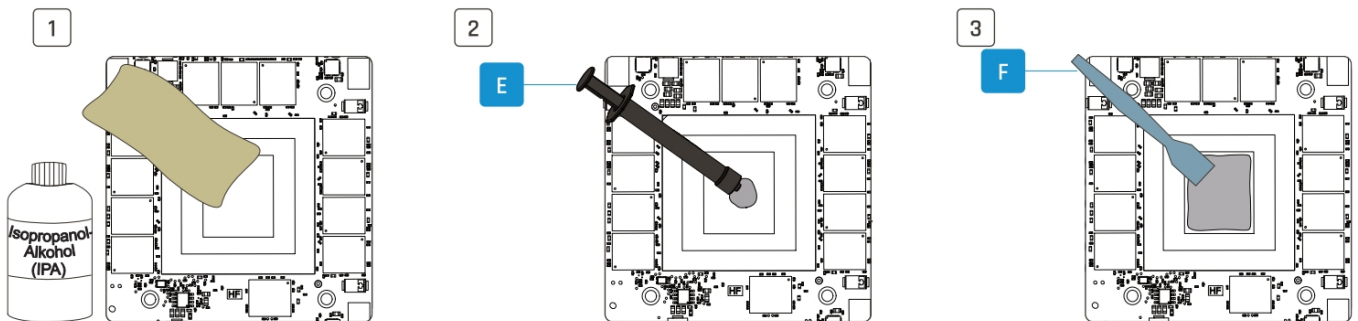
Prepare graphics card

Put the hardware on an antistatic mat. Begin dismantling the original cooler. Depending on the structure of the cooler, remove the screws at the back of the card and carefully unhook the fan connector first. If the original cooler uses thermal glue, extreme care should be taken as you can easily damage parts. Pick up all the items carefully. Next, clean the hardware of thermal paste or pad residues with a solvent (e.g. isopropanol alcohol).

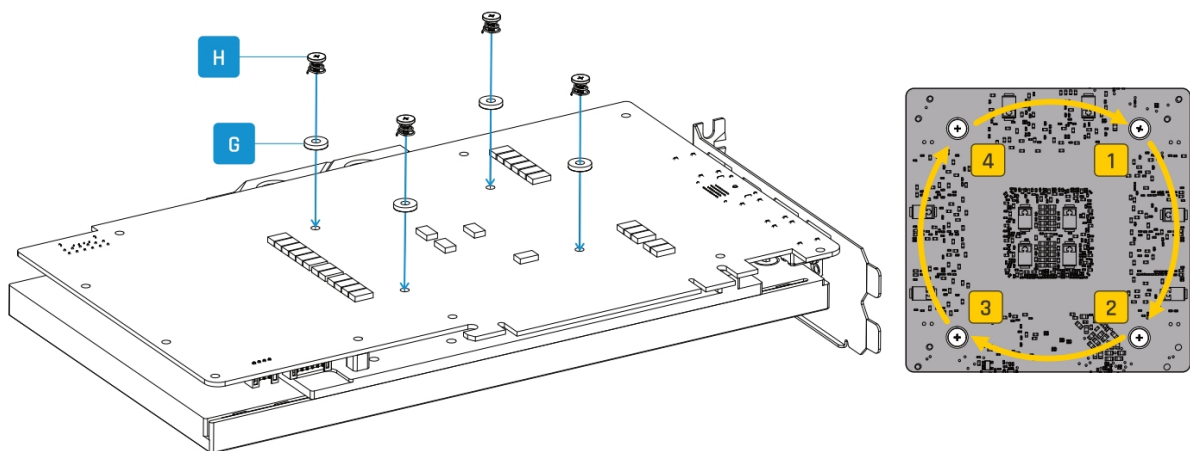
Place thermal pads on cooling block



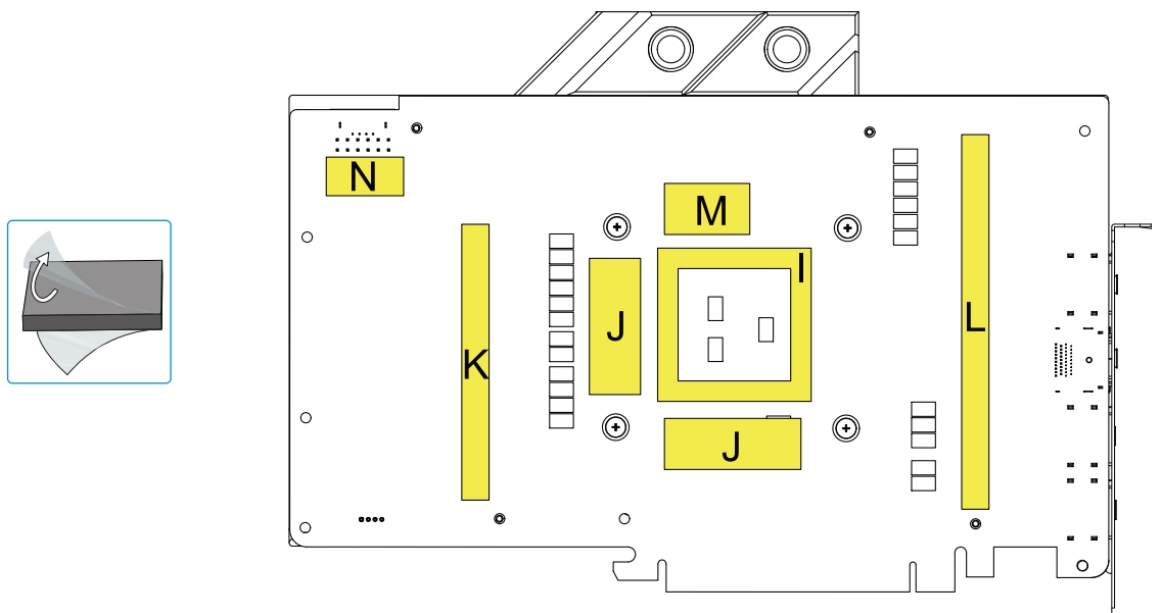
Apply Thermal Grease



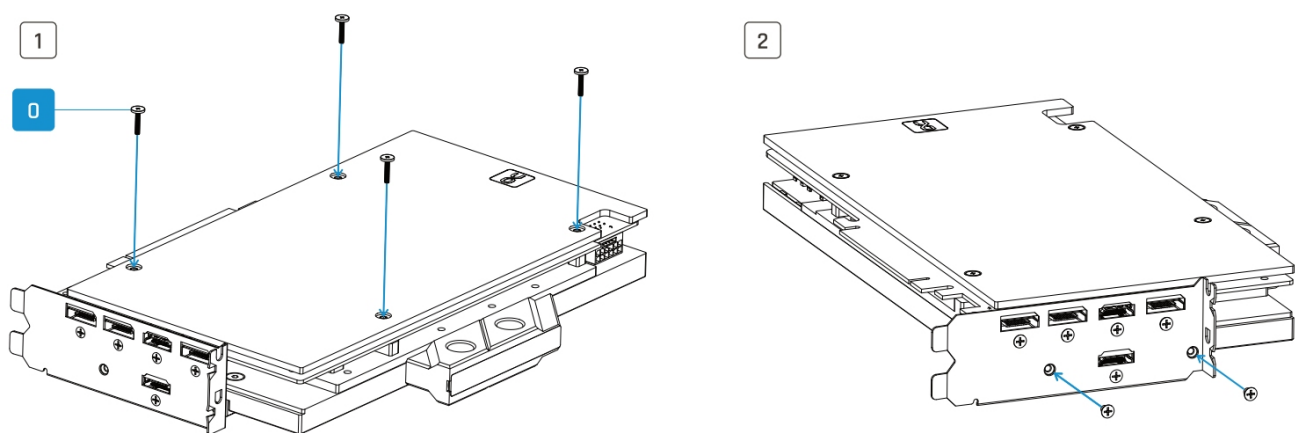
Install PCB



Place thermal pads on PCB backside

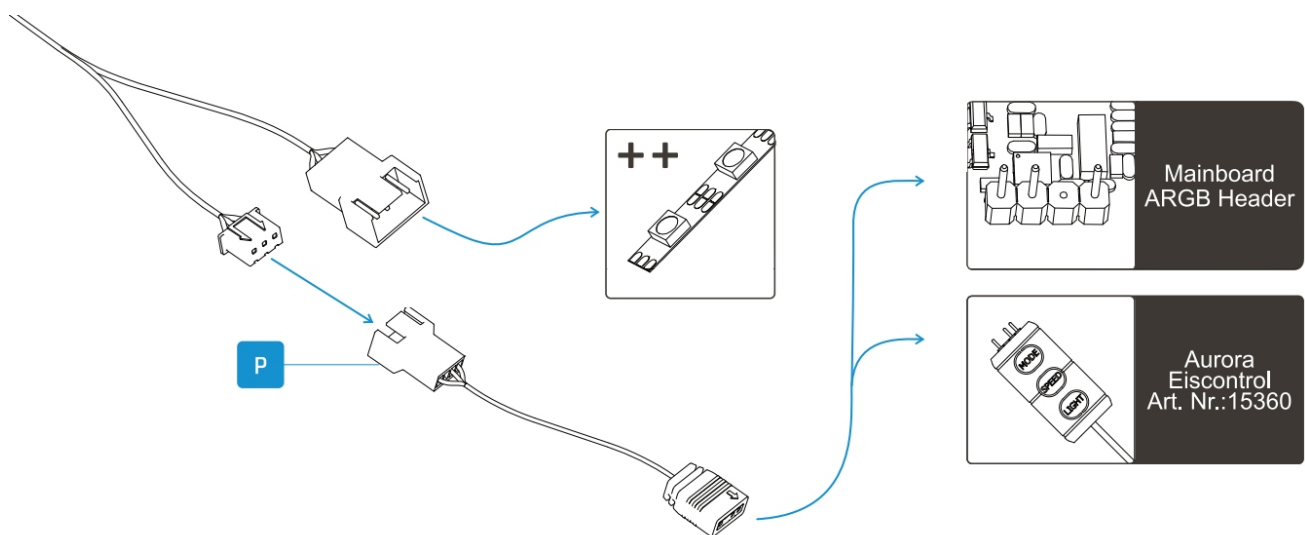


Mount PCI bracket and backplate

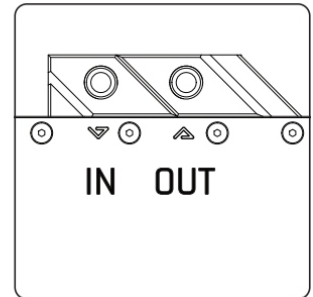
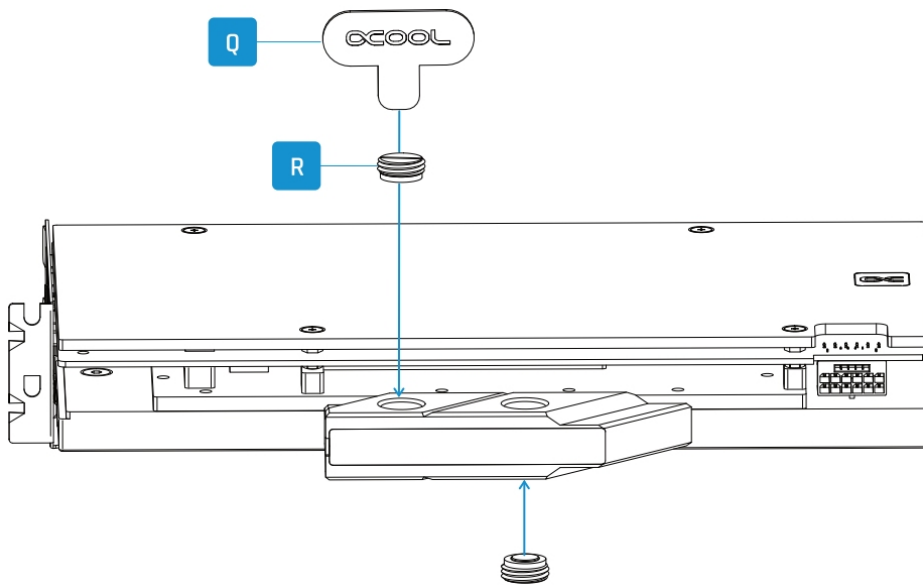


For the PCI bracket, use the original screws of the graphics card (2).

Connect ARGB lighting

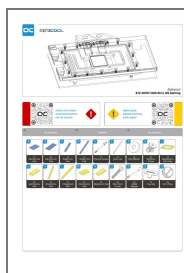


Screw in screw plugs with the tool



Need help?
 Alphacool International GmbH
 Marienberger Str. 1
 D-38122 Braunschweig
 Germany
 Support: +49 (0) 531 28874-0
 Fax: +49 (0) 531 28874 – 22
 E-Mail: info@alphacool.com
<https://www.alphacool.com>
 We care!

Documents / Resources



[alphacool RTX 4070Ti Eisblock Aurora Ventus with Backplate](#) [pdf] Instruction Manual
 RTX 4070Ti Eisblock Aurora Ventus with Backplate, RTX 4070Ti, Eisblock Aurora Ventus with B
 ackplate, Ventus with Backplate, Backplate

References

- [User Manual](#)

[Manuals+.](#) [Privacy Policy](#)

This website is an independent publication and is neither affiliated with nor endorsed by any of the trademark owners. The "Bluetooth®" word mark and logos are registered trademarks owned by Bluetooth SIG, Inc. The "Wi-Fi®" word mark and logos are registered trademarks owned by the Wi-Fi Alliance. Any use of these marks on this website does not imply any affiliation with or endorsement.