



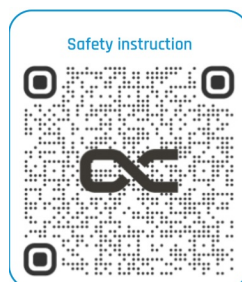
Alphacool Core 10x 4Pin PWM Splitter with SATA Power Connector Instructions

[Home](#) » [ALPHACOOOL](#) » Alphacool Core 10x 4Pin PWM Splitter with SATA Power Connector Instructions 

alpha**COOL** | CORE
Alphacool Core 10x 4-Pin PWM
splitter with SATA power connector



Read the safety instructions before starting the installation.

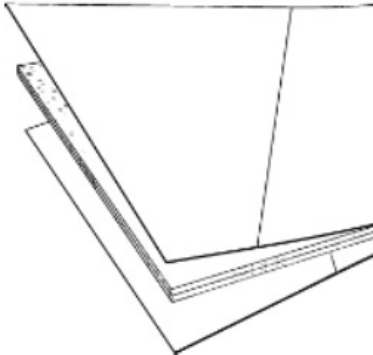


<https://www.alphacool.com/download/SAFETY%20INSTRUCTIONS.pdf>

Contents

- [1 Accessories](#)
- [2 Mounting](#)
- [3 Documents / Resources](#)
 - [3.1 References](#)
- [4 Related Posts](#)

Accessories

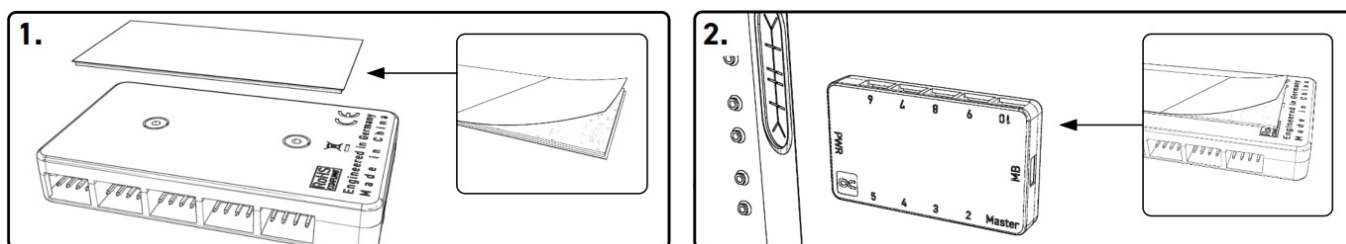
	
Mainboard Cable	Velcro fastener

Note

Switch off the computer. The power switch does NOT turn off the power supply to the computer. To cut off the power supply to the computer, you must unplug the power cord from the wall socket. Make sure the power cord is unplugged before opening the computer chassis.

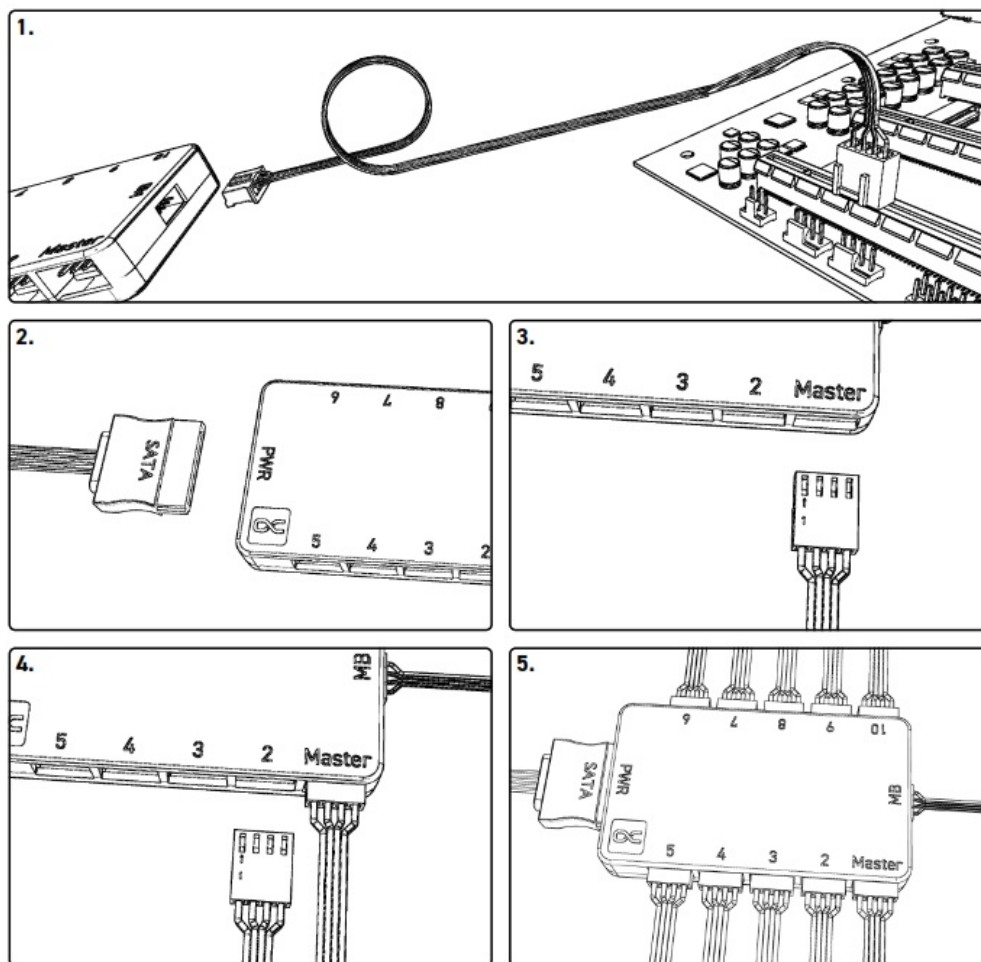
Mounting

Mount the distributor



1. Remove the upper protective film of the adhesive tape and stick it under the Controller.
2. Now remove the second protective film of the adhesive tape and stick the Controller to the computer case as shown. The Controller can be detached again through the Velcro layer.

Connect the cable



1. Plug the mainboard cable into the socket (MB) on the controller and a free fan connector on the mainboard as shown.
2. Connect the SATA power plug of your power supply unit to the socket (PWR) of the controller.
3. Connect the first fan to the socket (Master).
The speed is read from this fan.
4. Connect the other fans to the sockets (2-10). The speed of the fans is controlled by the master fan.
5. A maximum of 10 fans with a total power consumption of 54W (4,5A) can be connected to the controller.

alphacool | CORE

ALPHACOOl INTERNATIONAL GMBH

MARIENBERGER STR. 1

D-38122 BRAUNSCHWEIG GERMANY

SUPPORT: +49 (0) 531 28874 – 0

FAX: +49 (0) 531 28874 – 22

E-MAIL: INFO@ALPHACOOl.COM

<https://WWW.ALPHACOOl.COM>

GENERAL MANAGERS: ANDREAS RUDNICKI, FABIAN NOELTE

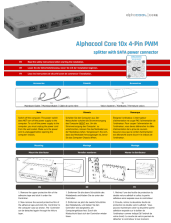
WEEE-REG.-NR.: DE 54464644

TRADE REGISTER: AMTSGERICHT BRAUNSCHWEIG HRB 202390

VAT.ID.NR.: DE270458421

TAX NUMBER: 13/207/02047

V.1.00-12.2021



[Alphacool Core 10x 4Pin PWM Splitter with SATA Power Connector](#) [pdf] Instructions
Core 10x 4Pin PWM Splitter with SATA Power Connector, 4Pin PWM Splitter with SATA Power
Connector, PWM Splitter with SATA Power Connector, Splitter with SATA Power Connector

References

- [Alphacool International GmbH - Wasserkühlungs Spezialist!](#)