




ALPHACOOL 25668 Core 6x 4-Pin PWM-DRGB Splitter Instruction Manual

[Home](#) » [ALPHACOOL](#) » ALPHACOOL 25668 Core 6x 4-Pin PWM-DRGB Splitter Instruction Manual 

Contents

- [1 ALPHACOOL 25668 Core 6x 4-Pin PWM-DRGB Splitter](#)
- [2 Accessories](#)
 - [2.1 Mounting](#)
 - [2.2 Connect the cable](#)
- [3 Documents / Resources](#)
 - [3.1 References](#)
- [4 Related Posts](#)


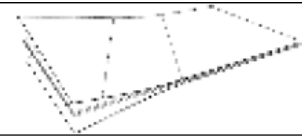

Alphacool

ALPHACOOL 25668 Core 6x 4-Pin PWM-DRGB Splitter



Read the safety instructions before starting the installation.

Accessories

		
1x aRGB Mainboard Cable / aRGB Mainboardkabel / Câble de carte mère aRGB	1x Velcro fastener / Klettband / Fermeture velcro	1x 4 pin PWM Cable/4-poliges PWM-Kabel/Câble PWM 4 broches

Safety instruction

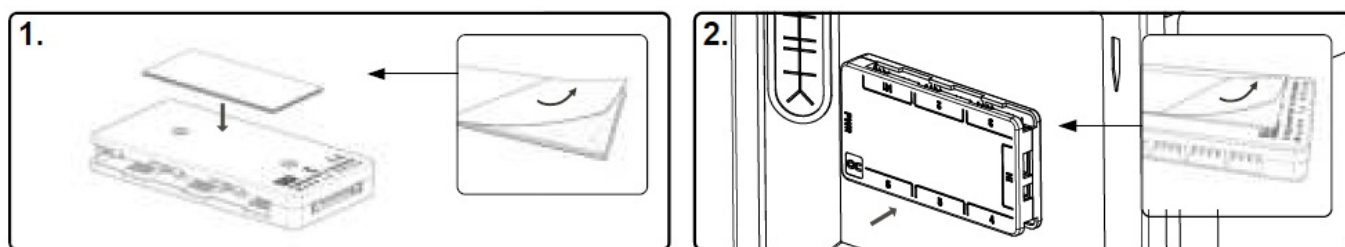


Note

Switch off the computer. The power switch does NOT turn off the power supply to the computer. To cut off the power supply to the computer, you must unplug the power cord from the wall socket. Make sure the power cord is unplugged before opening the computer chassis.

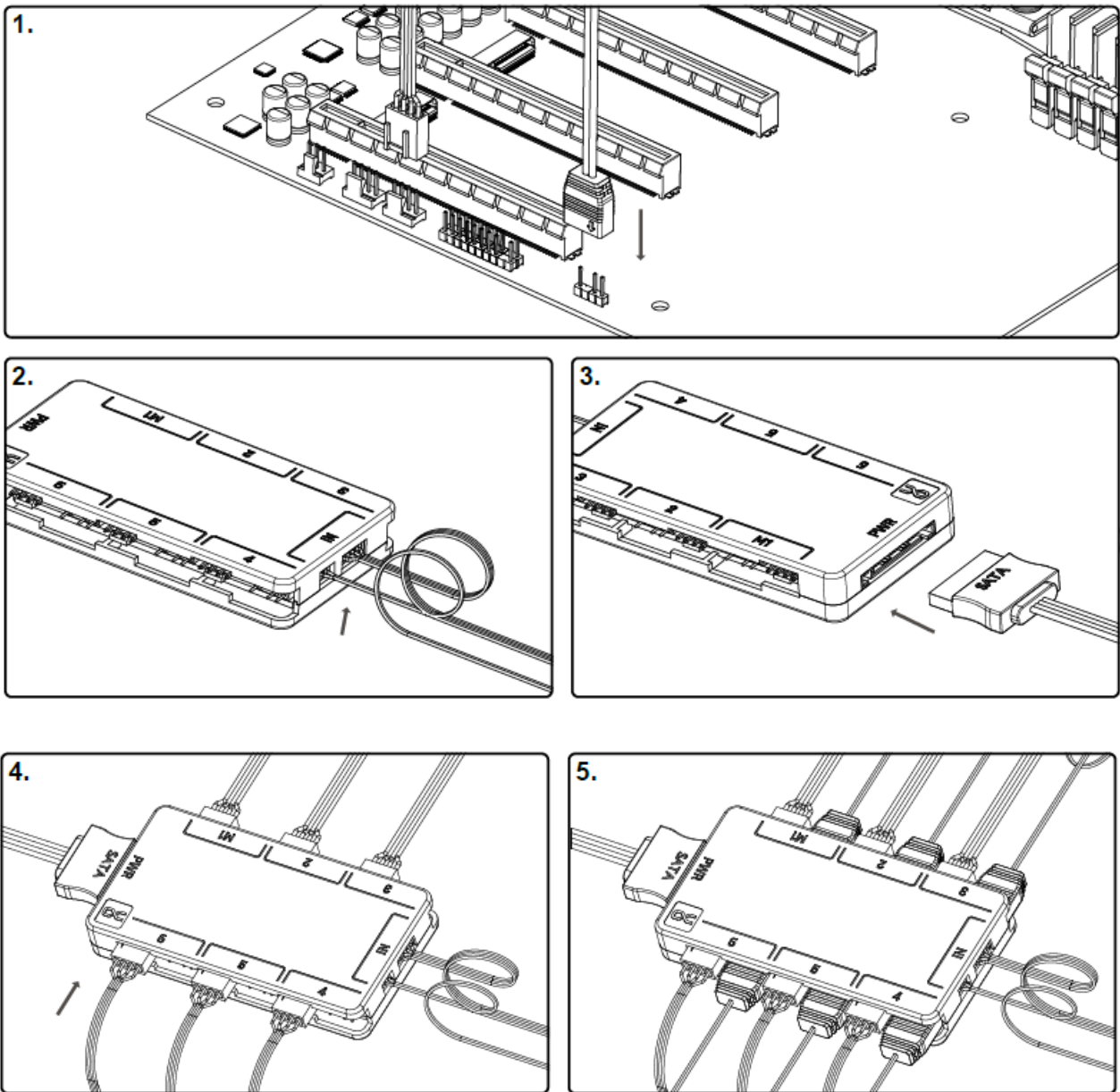
Mounting

Mount the distributor



1. Remove the upper protective film of the adhesive tape and stick it under the Controller.
2. Now remove the second protective film of the adhesive tape and stick the Controller to the computer case as shown. The Controller can be detached again through the Velcro layer.

Connect the cable



1. Connect the 2 pin aRGB and 4 pin PWM cable to your motherboard aRGB/4pin fan output, ensure the aRGB output is a 3 pin terminal, and not 4 pin, as damage can result of improper connection.
2. Connect the 2 pin aRGB IN and 4 pin PWM plug to the controller.
3. Connect the SATA power plug from your power supply to the SATA power input of the controller. Ensure power is OFF during this process.
4. Connect the 4 pin fans to the relevant sockets (OUT). Socket M1 is the tachometer signal and must be populated first.
5. Connect the 3 pin aRGB connectors to the relevant sockets

A maximum power consumption of 22.5W (4.5A) can be drawn from the controller.

ALPHACOOl INTERNATIONAL GMBH

MARIENBERGER STR. 1

D-38122 BRAUNSCHWEIG GERMANY

SUPPORT: +49 (0) 531 28874 – 0 FAX: +49 (0) 531 28874 – 22


E-MAIL:

INFO@ALPHACOOl.COM

<https://www.alphacool.com>

GENERAL MANAGERS: ANDREAS RUDNICKI, FABIAN NOELTE
WEEE-REG.-NR.: DE 54464644
TRADE REGISTER: AMTSGERICHT BRAUNSCHWEIG HRB 202390
VAT.ID.NR.: DE270458421
TAX NUMBER: 13/207/02047

Documents / Resources

	<p>ALPHACOOL 25668 Core 6x 4-Pin PWM-DRGB Splitter [pdf] Instruction Manual 25668 Core 6x 4-Pin PWM-DRGB Splitter, 25668, Core 6x 4-Pin PWM-DRGB Splitter, PWM-D RGB Splitter, Splitter</p>
---	--

References

- [Alphacool International GmbH - Wasserkühlungs Spezialist!](#)