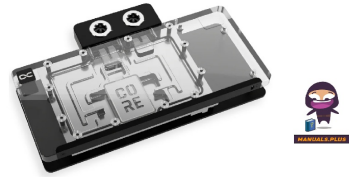




Alphacool
14752 Core RX 9070 XT
Taichi with Backplate



alphacool 14752 Core RX 9070 XT Taichi with Backplate Instruction Manual

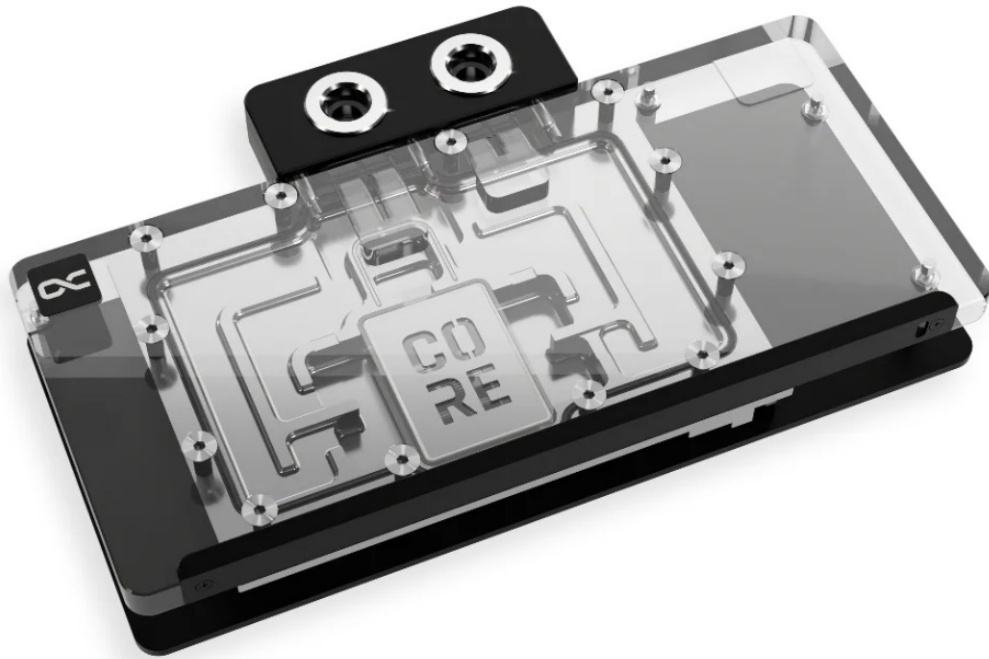
[Home](#) » [ALPHACOOL](#) » alphacool 14752 Core RX 9070 XT Taichi with Backplate Instruction Manual 

Contents

- [1 alphacool 14752 Core RX 9070 XT Taichi with Backplate](#)
- [2 Accessories](#)
- [3 Specifications](#)
- [4 Check compatibility](#)
- [5 Prepare Graphics Card](#)
- [6 Frequently Asked Questions](#)
- [7 Documents / Resources](#)
 - [7.1 References](#)



alphacool 14752 Core RX 9070 XT Taichi with Backplate



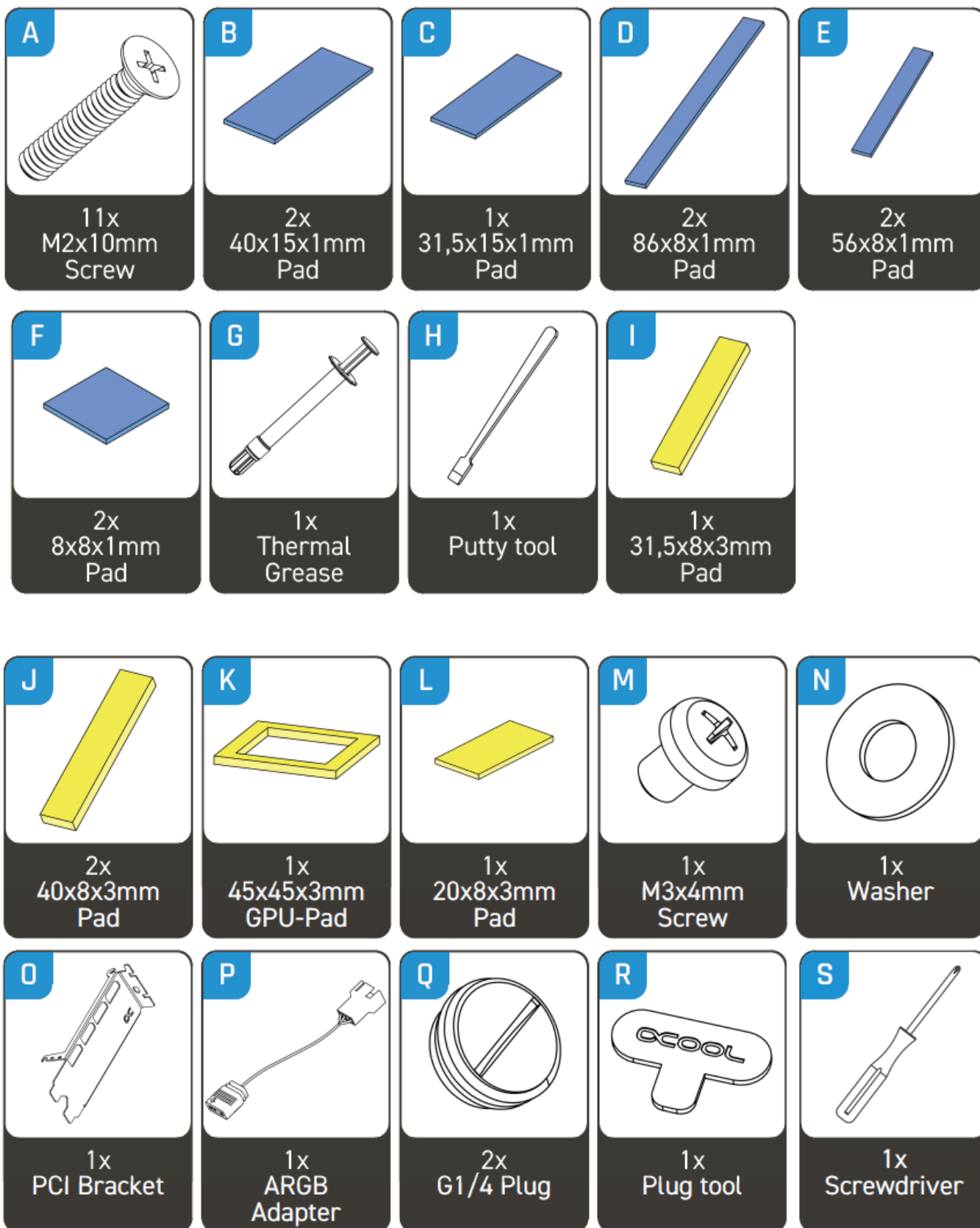
Safety instructions



Digital guide



Accessories



Specifications

- **Model:** Alphacool Core RX 9070 XT Taichi with Backplate
- **Dimensions:** Various pad sizes included
- **Components:** Includes various screws, pads, thermal grease, putty tool, PCI bracket, ARGB adapter, G1/4 plug, plug tool, screwdriver

Check compatibility

Before starting the cooler assembly, compare your card with the pictures in our configurator.

To do so, visit <https://gpu.alphacool.com> and search for your graphics card or cooler model.

For a definitiv identification, you can also compare the PCB number. The cooler was designed for a special PCB layout. Occasionally, graphics card manufacturers may revise the design of their card slightly, causing the cooler not to fit on later models. During assembly, please make sure taller parts have enough space around them and that the cooler does not damage your graphics card.

Alphacool International GmbH is not liable for assembly errors occurring due to negligence, such as selecting an incompatible cooler.

Prepare Graphics Card

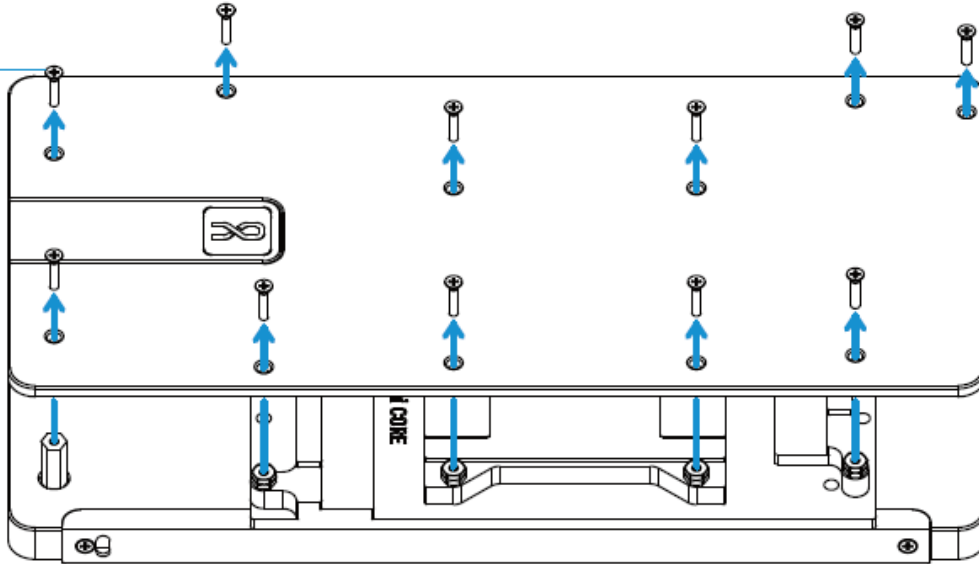
1. Place the hardware on an antistatic mat.
2. Begin dismantling the original cooler by removing screws at the back of the card and unhooking the fan connector.
3. Carefully pick up all items included in the package.
4. Clean the hardware of thermal paste or pad residues with a solvent like isopropanol alcohol.

Remove Transport Spacer

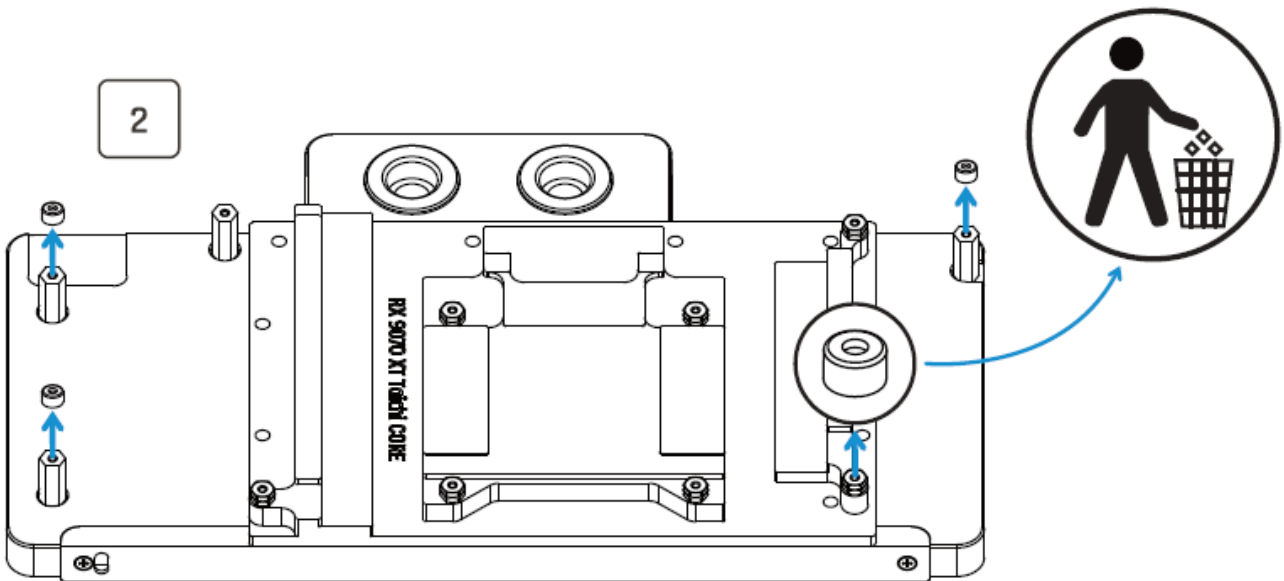
Remove the transport spacer from the graphics card before proceeding.

1

A

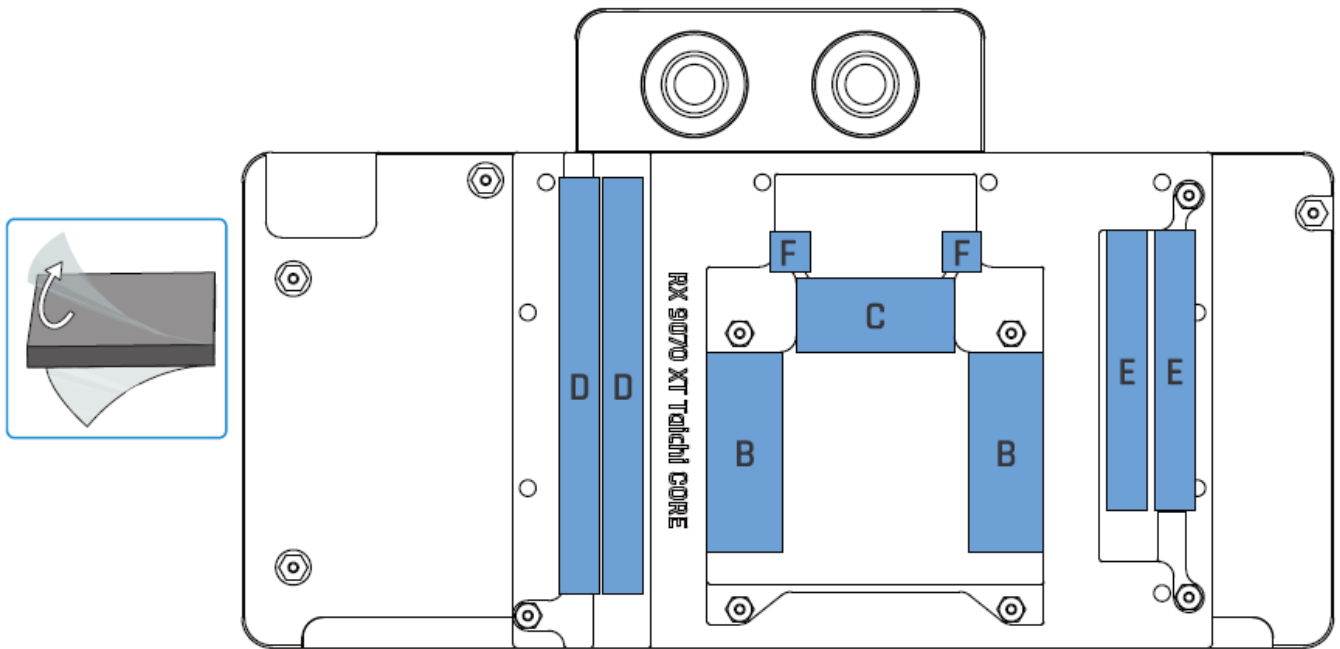


2



Place Thermal Pads on Cooling Block

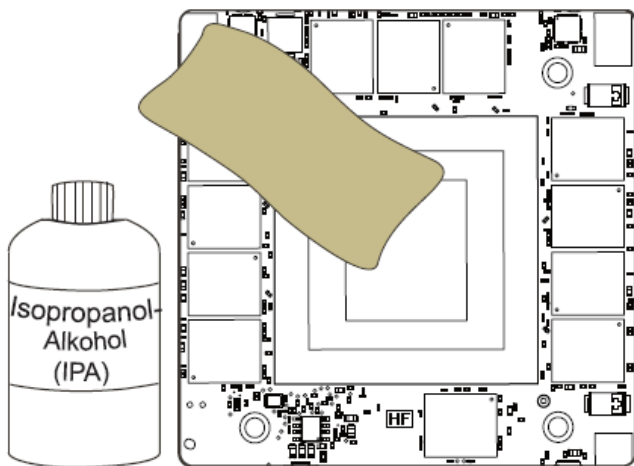
Place the thermal pads provided on the cooling block as instructed.



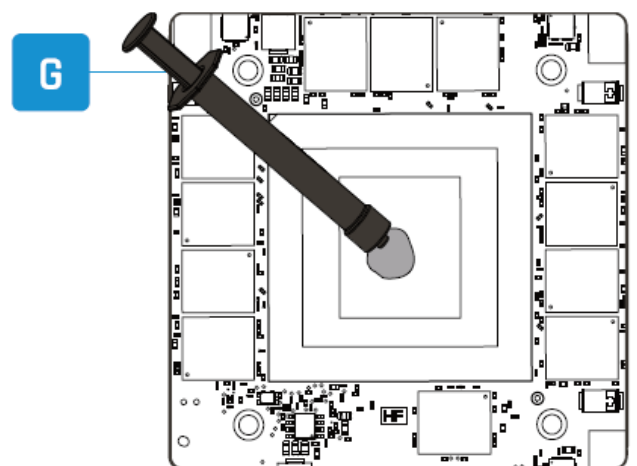
Apply Thermal Grease

Apply the thermal grease included in the package as needed for proper heat transfer.

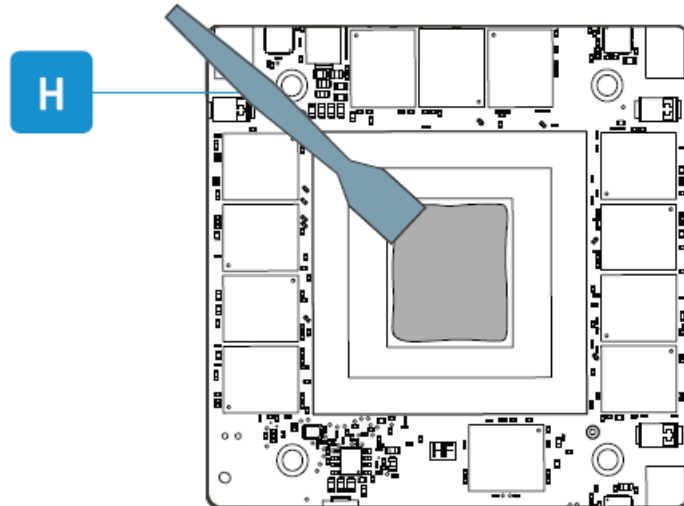
1



2

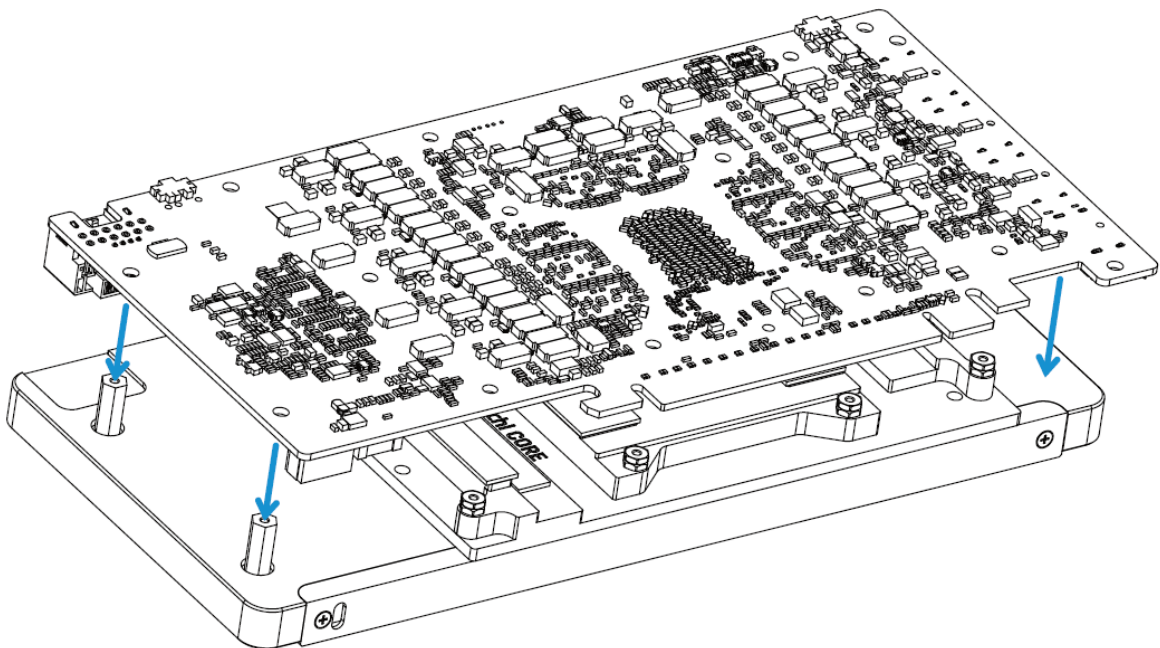


3

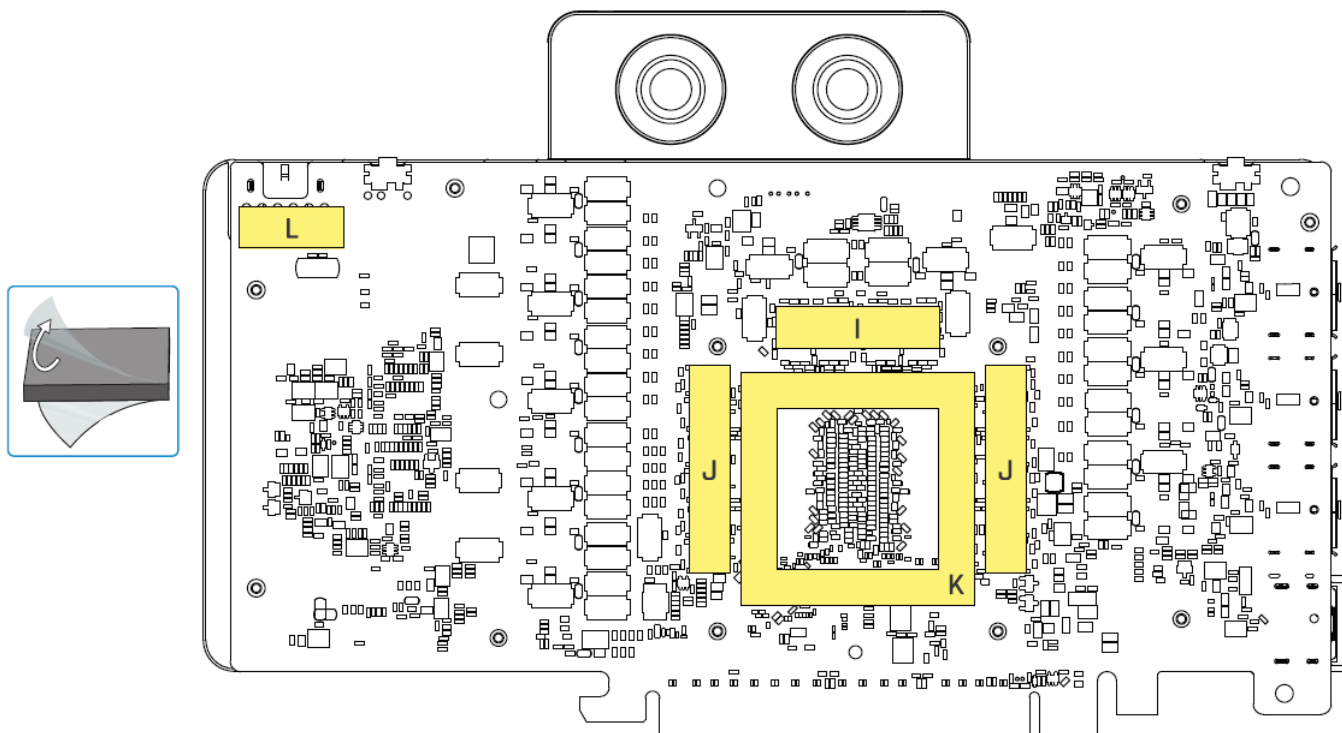


Install PCB

Position the PCB backside properly on the cooling block.



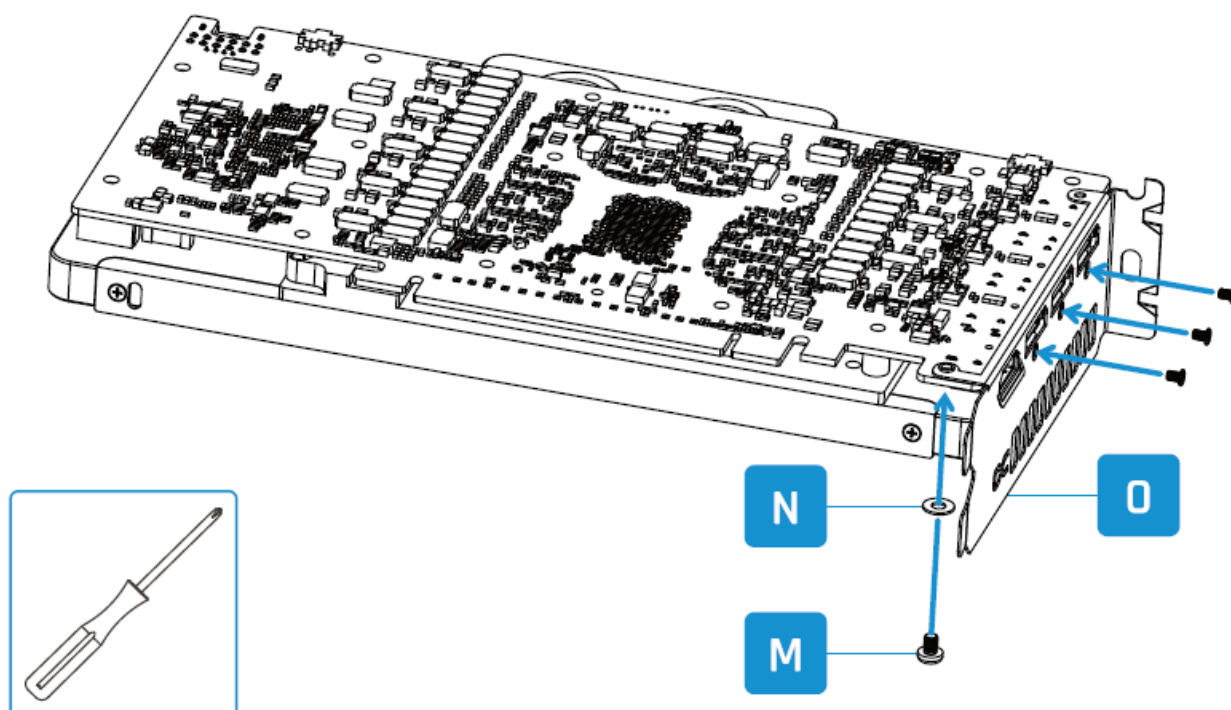
Place the thermal pads on the PCB backside



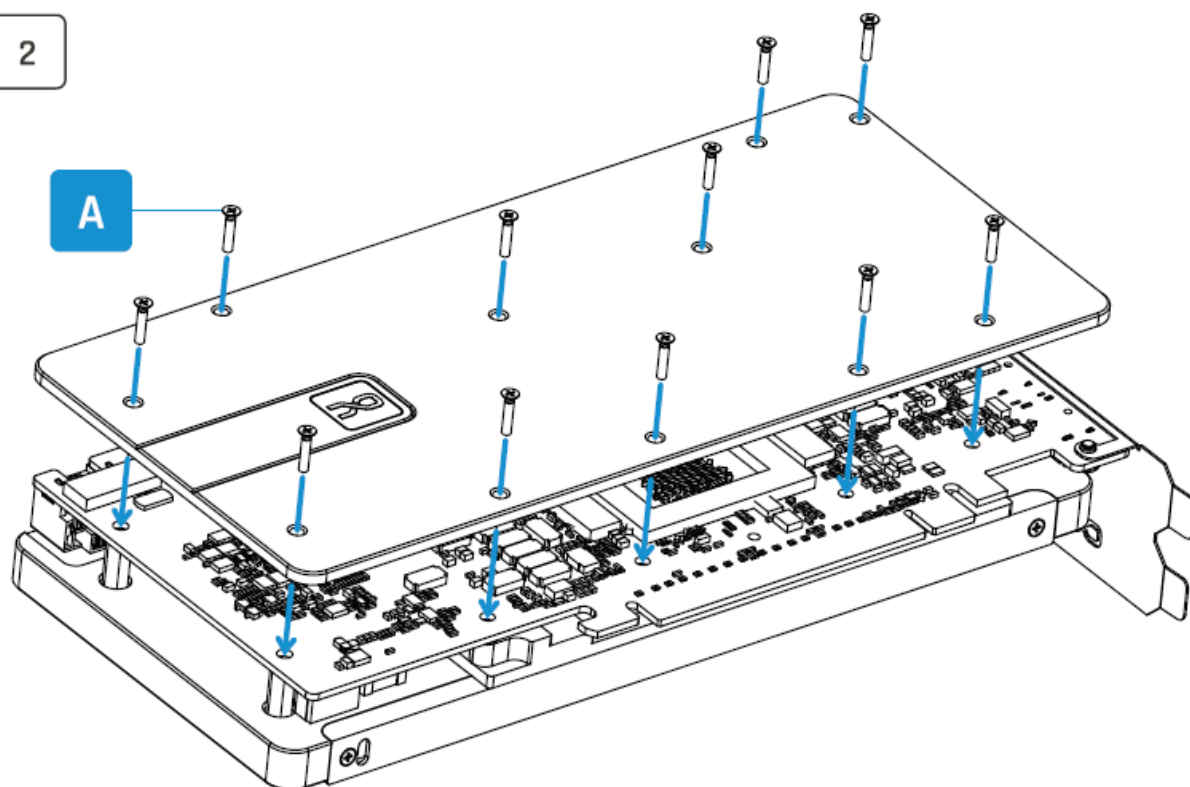
Mount Backplate and PCI Bracket

Use 3 screws from the graphics card scope of delivery to secure the IO shield

1

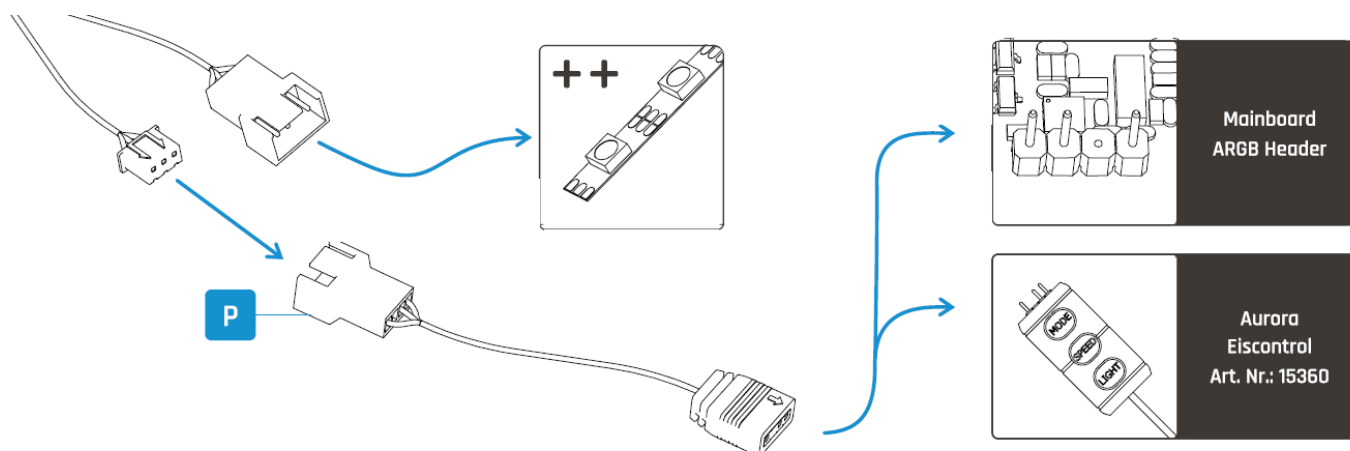


2



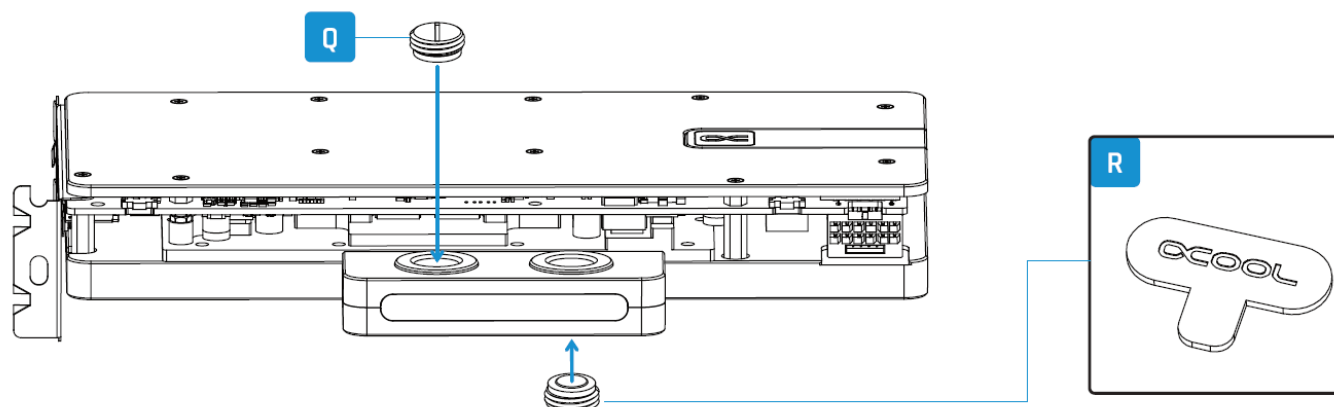
Connect ARGB Lighting

Connect the ARGB adapter for lighting effects as desired.



Screw in Screw Plugs with the Tool

Use the provided tool to screw in the plugs securely.



Frequently Asked Questions

Q: How do I check compatibility with my graphics card?

A: Ensure compatibility by verifying that the cooler is suitable for your specific graphics card model before installation.

Q: What should I do if my original cooler uses thermal glue?

A: Exercise extreme care during removal to avoid damaging any components. Clean any residue with a solvent.

Q: How do I contact support for further assistance?

A: Contact Alphacool International GmbH via phone at +49 (0) 531 28874-0 or email at info@alphacool.com for support.

Need help?

Support: +49 (0) 531 28874-0

Fax: +49 (0) 531 28874 – 22

E-Mail: info@alphacool.com

<https://www.alphacool.com>

Documents / Resources

	<p>alphacool 14752 Core RX 9070 XT Taichi with Backplate [pdf] Instruction Manual 14752 Core RX 9070 XT Taichi with Backplate, 14752, Core RX 9070 XT Taichi with Backplate, 9070 XT Taichi with Backplate, Taichi with Backplate, Backplate</p>
--	--

References

- [User Manual](#)

[Manuals+](#), [Privacy Policy](#)

This website is an independent publication and is neither affiliated with nor endorsed by any of the trademark owners. The "Bluetooth®" word mark and logos are registered trademarks owned by Bluetooth SIG, Inc. The "Wi-Fi®" word mark and logos are registered trademarks owned by the Wi-Fi Alliance. Any use of these marks on this website does not imply any affiliation with or endorsement.