

Alpha WORKS GUR036 Smart Plug Outlet Compatible with Alexa Amazon Echo and Google Assistant User Manual

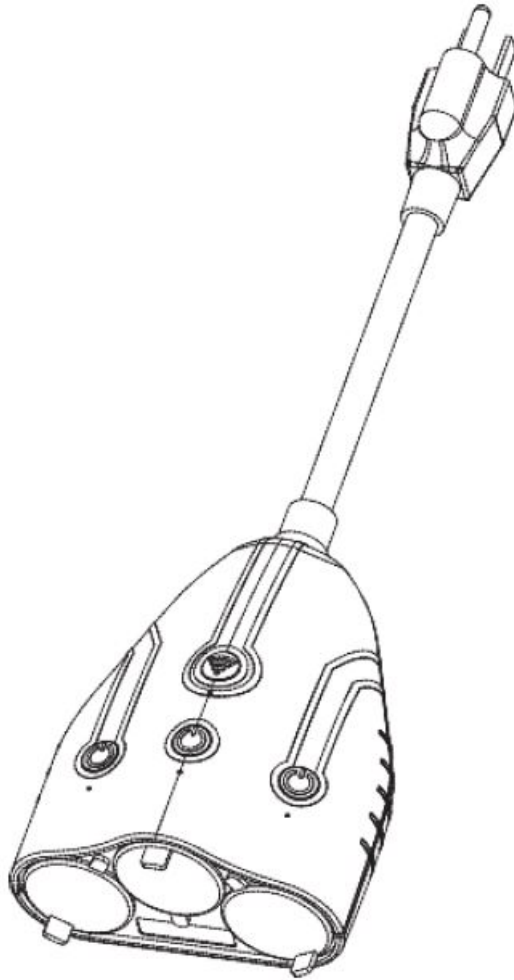
[Home](#) » [Alpha WORKS](#) » Alpha WORKS GUR036 Smart Plug Outlet Compatible with Alexa Amazon Echo and Google Assistant User Manual 

Contents

- [1 Alpha WORKS GUR036 Smart Plug Outlet Compatible with Alexa Amazon Echo and Google Assistant](#)
- [2 GENERAL SAFETY REGULATIONS](#)
- [3 FCC Matters Needing Attention](#)
- [4 TECHNICAL DETAILS](#)
- [5 OPERATION](#)
- [6 CHECKLIST BEFORE USING THE DEVICE](#)
- [7 USE APP](#)
- [8 HOW TO WORK WITH ALEXA AND GOOGLE HOME](#)
- [9 TROUBLESHOOTING](#)
- [10 Documents / Resources](#)
 - [10.1 References](#)
- [11 Related Posts](#)



Alpha WORKS GUR036 Smart Plug Outlet Compatible with Alexa Amazon Echo and Google Assistant



GENERAL SAFETY REGULATIONS

1. Keep the work area clean and dry. Damp or wet work areas can result in injury.
2. Keep children away from work area. Do not allow children to handle this product.
3. There are certain applications for which this equipment was designed. It will do the job better and more safely at the capacity for which it was intended. Do not modify this equipment, and do not use this equipment for a purpose for which it Was not intended.
4. Before using this product, carefully check that it will operate properly and perform its intended function.
5. Do not overreach. Keep proper footing and balance at all times to prevent tripping, falling, back injury, etc.
6. DO NOT use the equipment when tired or under the influence of drugs, alcohol, or medication. A moment of inattention while operating this equipment may result in serious personal injury.
7. Ensure that only the qualified electrician can service this socket. And it must not be used by children or unskilled persons.
8. Ensure that power supply voltage does not exceed maximum voltage rating of socket.
9. Ensure that socket is properly be installed before connecting to power supply.
10. Ensure that all electrical power is removed form socket before servicing.
11. Check for frayed and broken wires before each use.
12. Remove power from the socket immediately when any malfunction occurs.
13. Never remove, tamper with or cut the safety devices fitted by the manufacture.

FCC Matters Needing Attention

This device complies with part 15 of the FCC Rules. Operation is subject to the following two conditions: (1) This device may not cause harmful interference, and (2) this device must accept any interference received, including interference that may cause undesired operation.

Caution: Changes or modifications to this unit not expressly approved by the party responsible for compliance could void the user’s authority to operate the equipment. This device contains licence-exempt transmitter(s)/receiver(s) that comply with Innovation, Science and Economic Development Canada’s licence-exempt RSS(s). Operation is subject to the following two conditions:

1. This device may not cause interference.
2. This device must accept any interference, including interference that may cause undesired operation of the device.

NOTE: This equipment has been tested and found to comply with the limits for a Class B digital device, pursuant to part 15 of the FCC Rules. These limits are designed to provide reasonable protection against harmful interference in a residential installation. This equipment generates, uses and can radiate radio frequency energy and, if not installed and used in accordance with the instructions, may cause harmful interference to radio communications. However, there is no guarantee that interference will not occur in a particular installation. If this equipment does cause harmful interference to radio or television reception, which can be determined by turning the equipment off and on, the user is encouraged to try to correct the interference by one or more of the following measures:

- Reorient or relocate the receiving antenna.
- Increase the separation between the equipment and receiver.
- Connect the equipment into an outlet on a circuit different from that to which the receiver is connected.
- Consult the dealer or an experienced radio/TV technician for help.

To satisfy FCC&IC RF exposure requirements, a separation distance of 20 cm or more should be maintained between the antenna of this device and persons during device operation. To ensure compliance, operations at closer than this distance is not recommended.

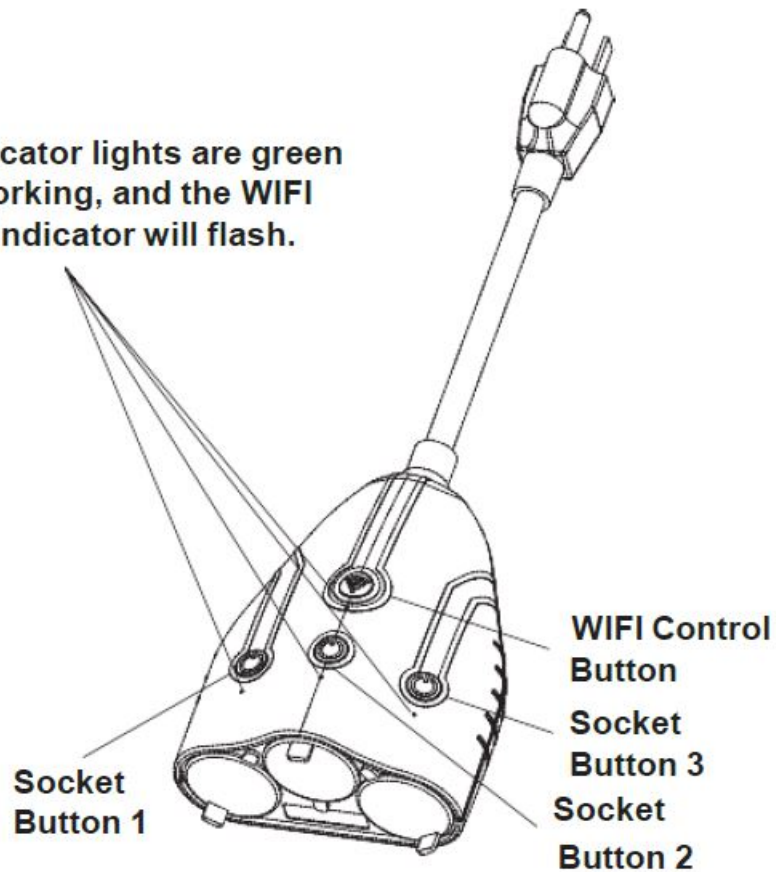
TECHNICAL DETAILS

Rated Voltage	120VAC 60Hz
Waterproof Level	IPX4
Max Power	1875W
Max Current	15A
Working Temperature	-4~185°F (-20~60°C)

This OUTDOOR SMART SOCKET comes with a Wi-Fi Outlet with three sockets. It’s compatible with Amazon Alexa and Google Assistant for voice control. Connect devices to the smart outlet by using the free Smart Life App on your phone and enjoy hands-free lifestyle.

OPERATION

The indicator lights are green while working, and the WIFI control indicator will flash.



CHECKLIST BEFORE USING THE DEVICE

1. In order to power up the sockets, first click each button, and check whether the indicator lights are working.
2. Your smart phone or tablet should have connected a 2.4G WIFI with internet.
3. The device only supports 2.4G network. Please don't connect to a 5G network or hybrid network.
4. Enter correct WIFI passwords. Make sure that your WIFI SSID and passwords don't contain special characters.
5. During pairing process, make sure that your IOS or Android device and smart socket within the range of the router.
6. Please pay attention to the maximum power that this socket supports. It's strictly prohibited to use the superpower load.

USE APP

Download Smart Life app

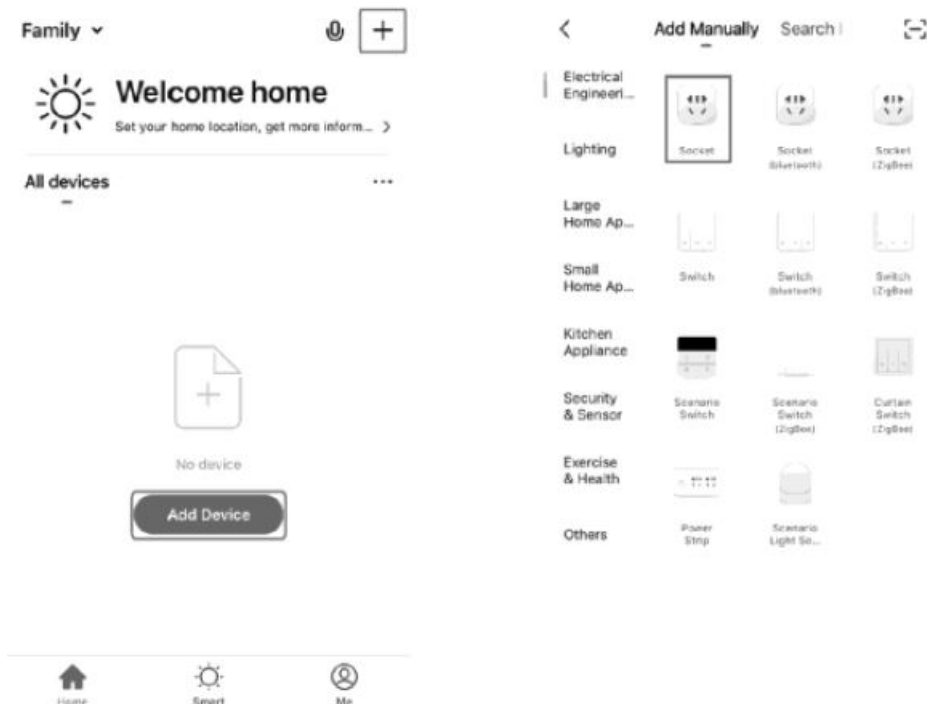
You can scan the QR code below to download the Smart Life App: You can also search "Smart Life" in either App Store or Google Play to install the app.

Register

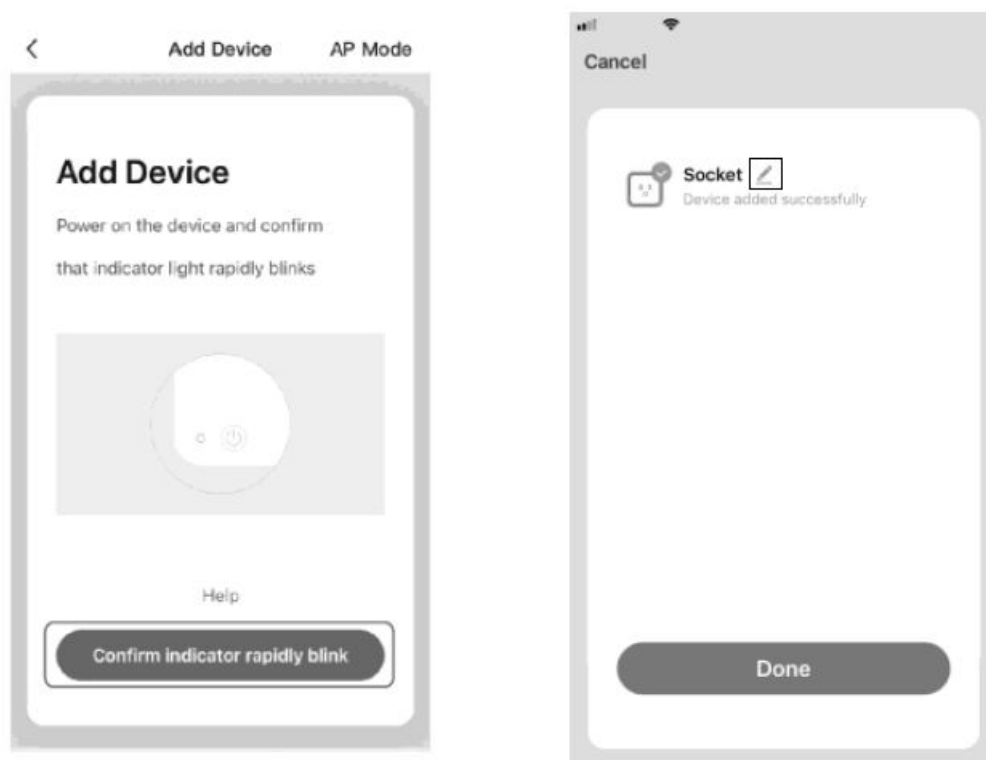
If you don't have an App account, please register an account first. Tap to enter registration page, select your country code. Enter the mobile number and tap "Obtain verification code". Then enter the verification code from the message, and enter the password, tap "Confirm" to finish your registration.

Add device

Enter the App, tap "Add Device" or "+", then select Electrical. Engineering "Socket". Please pressing WIFI button over 5 seconds and make sure the WIFI indicator flashes quickly.

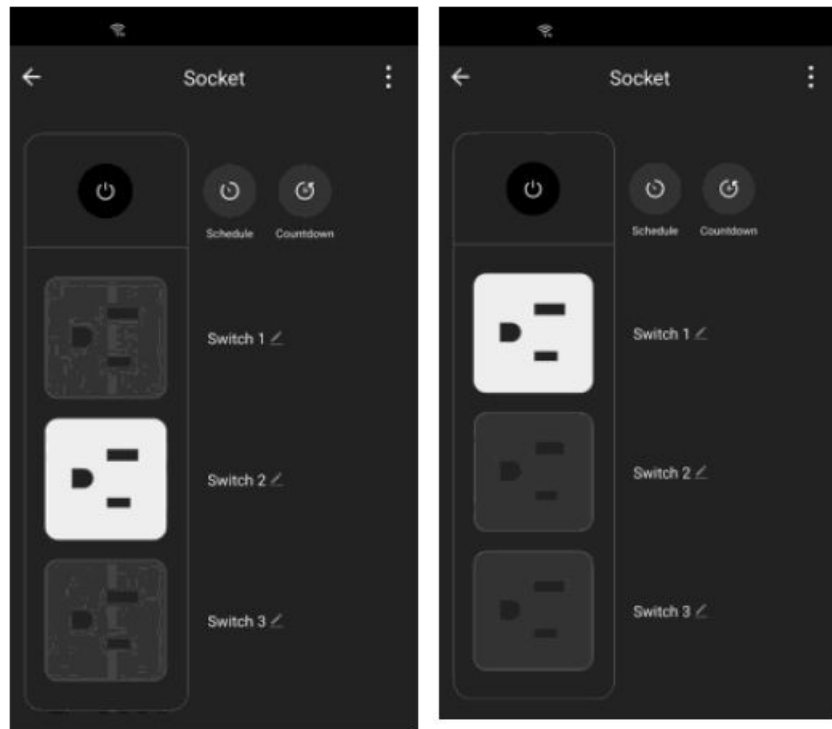


Tap to go on to network connecting. Select the Wi-Fi under which device is working, enter password and tap “ok” to enter network connection process. After connecting, you could name the device you want, then the smart device will be shown on the home page. Rename what you want by click the icon.



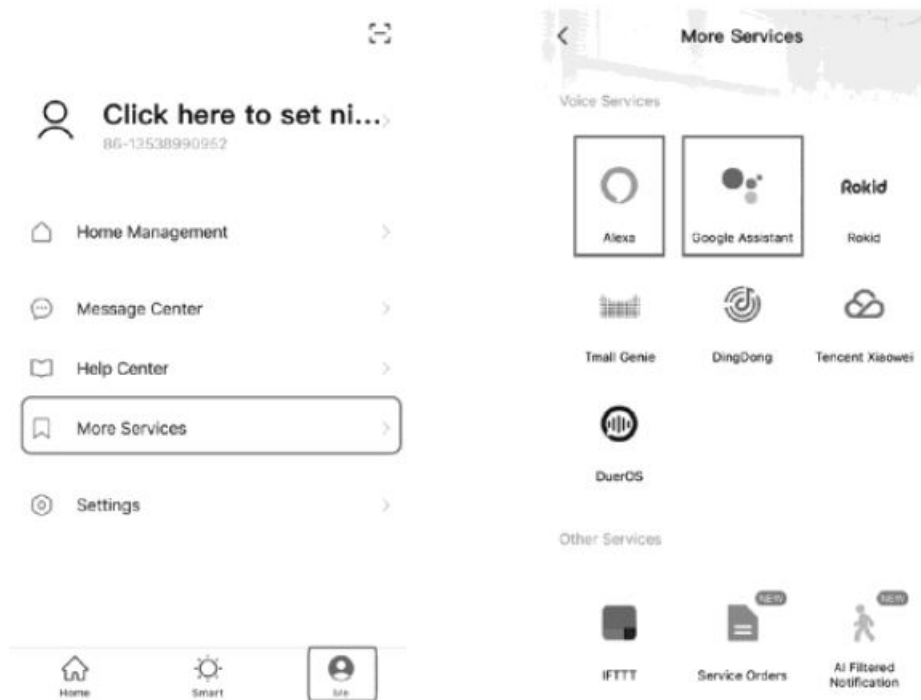
Control device

Tap to enter it's control page, click on the button for ON / OFF operations. Each socket can be independently controlled and customized through the app. And individually control each socket using separate buttons. Rename what you want by click the icon. In the control page you could click on the Schedule, Timer etc., for regularly operations. HOW TO WORK WITH ALEXA AND GOOGLE HOME Click and go to the “Me” page. Get the corresponding detailed operation instructions in “More Services”.



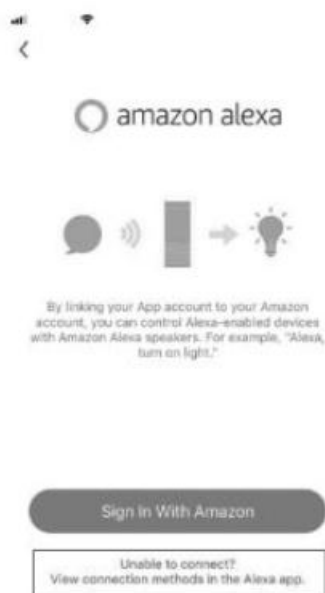
HOW TO WORK WITH ALEXA AND GOOGLE HOME

Click and go to the “Me” page. Get the corresponding detailed operation instructions in “More Services”.



How to connect Alexa? Click the link.

You could get more related operations and the help of common problems on the APP’s “Me” page. You could also contact the seller to get a better product use experience.



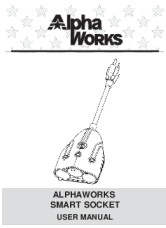
TROUBLESHOOTING

Problem	Reason	Solution
Power up, manually operate the socket	1. Power supply is not well connected.	Connect the socket firmly.
	2. Overload or electrical appliances malfunction.	Do not overload and make sure the electrical appliance is working.
	3. Smart socket circuit malfunction.	Contact customer service.
Indicator not working.	1. Internal circuit break.	Contact customer service.
	2. Indicator malfunction.	Contact customer service
Remoted control by smartphone, the electrical appliances do not work.	1. Power supply is not connected.	Connected the socket.
	2. Overload or electrical appliances malfunction.	Do not overload and make sure the electrical appliances are working.
	3. WIFI cannot connect to smart socket.	Check whether the WIFI signal is working.
		Ensure that the smart socket is covered by the WIFI and is well connected.

Great Circle USA

Support Line: 1-866-493-0524 help@greatcircleus.com www.greatcircleus.com

Documents / Resources

	<p>Alpha WORKS GUR036 Smart Plug Outlet Compatible with Alexa Amazon Echo and Google Assistant [pdf] User Manual</p> <p>GUR036, 2AW8R-GUR036, 2AW8RGUR036, GUR036 Smart Plug Outlet Compatible with Alexa Amazon Echo and Google Assistant, Smart Plug Outlet Compatible with Alexa Amazon Echo and Google Assistant</p>
--	--

References

- [G help@greatcircleus.com](mailto:help@greatcircleus.com)
- [G Outdoor & DIY Power Equipment for Home & Business – DIY Tools by GreatCircleUSA Amazon American Express Apple Pay Diners Club Discover Google Pay Mastercard PayPal Shop Pay Venmo Visa](#)