



[Home](#) » [alpha laboratories](#) » **Alpha Laboratories CALEX Faecal Calprotectin Extraction Device**

User Manual

Contents [[hide](#)]

- 1 [Alpha Laboratories CALEX Faecal Calprotectin Extraction Device](#)
- 2 [Direct Sampling with the CALEX® Extraction Device](#)
- 3 [Your Test](#)
- 4 [Intended Use](#)
 - 4.1 [What Sample is Required?](#)
- 5 [Contents:](#)
- 6 [Key Things to Remember](#)
- 7 [How to Collect Your Sample](#)
 - 7.1 [1. COLLECT THE FAECAL SAMPLE](#)
 - 7.2 [2. PREPARE THE CALEX CAP](#)
 - 7.3 [3. TAKE THE SAMPLE](#)
 - 7.4 [4. CHECK THE SAMPLE](#)
 - 7.5 [5. RE-SEAL THE CALEX CAP](#)
 - 7.6 [6. DO THIS ONLY ONCE](#)
- 8 [Checklist](#)
- 9 [Access to Alternative IFU Formats](#)
- 10 [Product Specifications:](#)
- 11 [Frequently Asked Questions \(FAQ\):](#)
 - 11.1 [Q: Can I reuse the CALEX device for multiple samples?](#)
 - 11.2 [Q: What should I do if I accidentally get urine in the sample?](#)
 - 11.3 [Q: How should I store the collected sample before sending it to the laboratory?](#)
- 12 [Documents / Resources](#)
 - 12.1 [References](#)
- 13 [Related Posts](#)

Alpha Laboratories CALEX Faecal Calprotectin Extraction Device



USER MANUAL

Direct Sampling with the CALEX® Extraction Device

Your Test

Your healthcare professional has asked you to do an elastase test. This is used to determine how well your pancreas is working and if your body is having trouble digesting food properly.

Intended Use

A single use, home faecal Elastase kit for collection and transportation to the laboratory for analysis.

What Sample is Required?

A formed faecal sample (solid or semi-solid) is preferable for this test. Elastase is a digestive enzyme that is naturally passed in the faeces if your pancreas is working properly.

Avoid using a liquid or watery faeces, as it may dilute the enzyme and lead to inaccurate

results. If possible, wait until a more formed faecal sample can be collected.

Contents:

- 1x CALEX device
- 1x Instruction for use (this document) with detachable label
- 1x clear plastic bag

Key Things to Remember

- Do NOT use the CALEX beyond the stated expiry date.
- A formed sample is ideal.
- The faecal sample must not come in contact with the toilet water due to bleaches and disinfectants.
- Do not get urine in the sample as this will dilute it.
- Read the instructions carefully before you start.

How to Collect Your Sample

BEFORE YOU BEGIN...

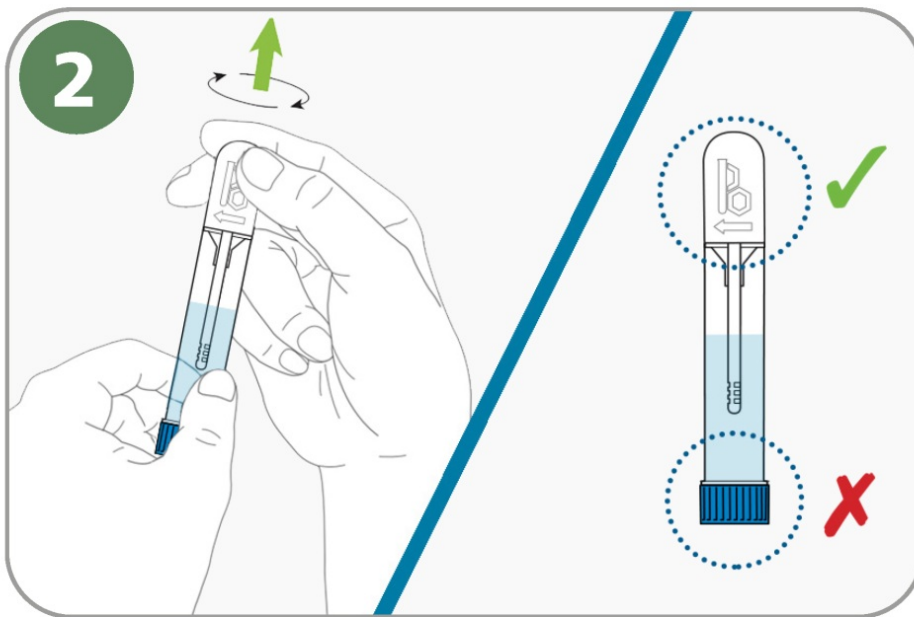
Write the date of sample collection on the label. Also write your name, date of birth and NHS number if this is not already on the tube.



1. COLLECT THE FAECAL SAMPLE

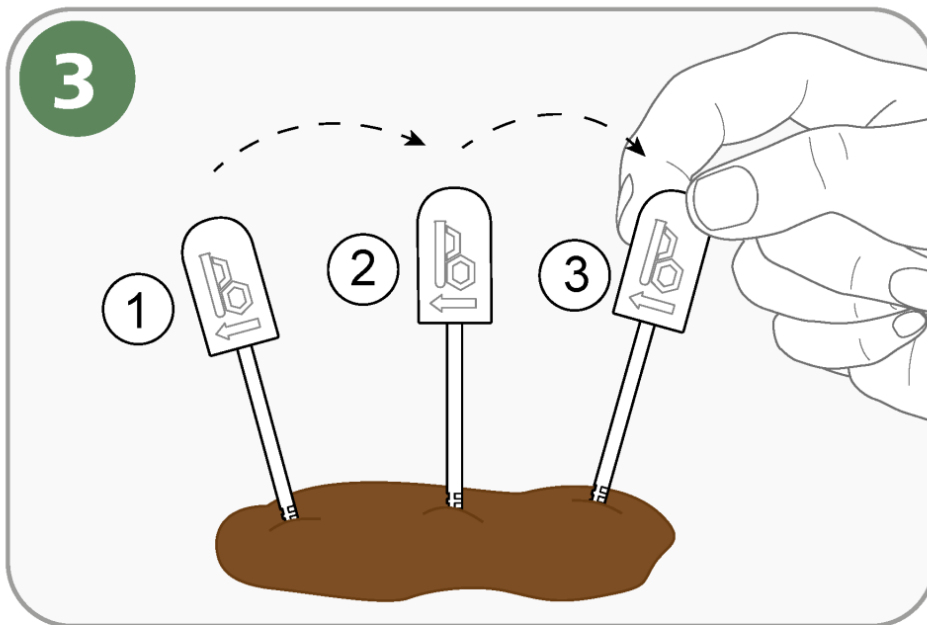
There are a number of ways to collect your faecal sample:

- A clean takeaway container, paper/foil plate.
- Loosely draped cling film placed over the toilet towards the back to form a dip. (Do not flush after use).
- A plastic bag or glove covering your hand.
- Use a solid sample where possible.



2. PREPARE THE CALEX CAP

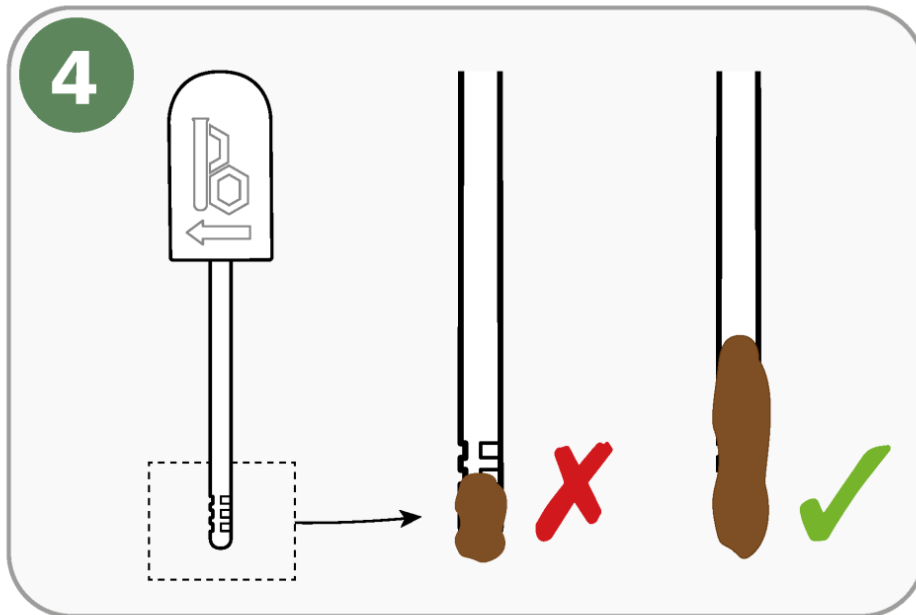
Holding the CALEX Cap tube with the white cap pointing upward remove the sampling pin by simultaneously turning clockwise and pulling up the white cap.



3. TAKE THE SAMPLE

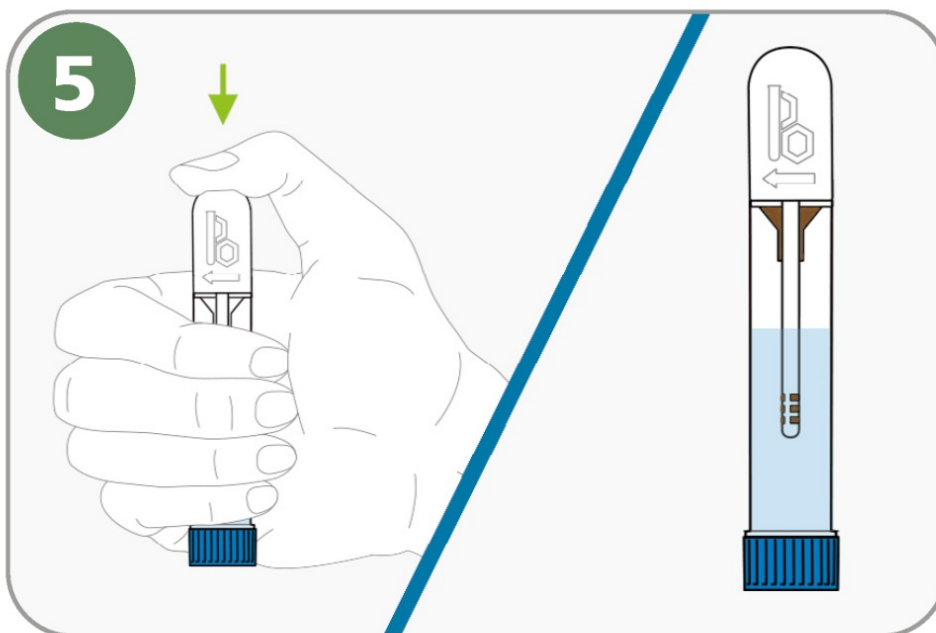
Dip the sampling pin into the faeces and twist. Repeat this process three to five times in different places in the sample. Scan the QR code to watch a video on how to deal with different sample consistencies.





4. CHECK THE SAMPLE

Make sure all the grooves are completely filled on the end of the sampling pin.



5. RE-SEAL THE CALEX CAP

Replace the sampling pin back into the CALEX Cap tube and push firmly into the locking position (you will feel and hear two clicks).

6. DO THIS ONLY ONCE

Once complete do not remove the sample pin or repeat the collection process as this will lead to inaccurate or incorrect results. Please return your sample in the plastic bag provided as quickly as possible to your GP or hospital laboratory.

DO NOT UNSCREW THE BLUE CAP and DO NOT EMPTY THE LIQUID FROM THE CALEX CAP

Liquid contains preservative which may cause allergic skin reactions.

If skin irritation or rash occurs: Get medical advice/attention.

Checklist

- Ensure the white cap is replaced securely (you will hear two clicks).
- Ensure the CALEX® tube is clearly labelled with your name, date of birth, NHS number, date of sample collection and indicate if the sample was liquid (Yes/No).
- Put the CALEX® tube and the GP request form into the plastic bag and return as directed to the GP or hospital laboratory, as quickly as possible.

Access to Alternative IFU Formats

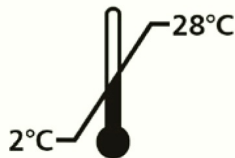
Scan the QR code to visit our website where you can find different versions of the IFU, including:

Narrated step-by-step.

Explanations of the advisory symbols used within the kit can be found on the website:

www.alphalabs.co.uk/kit-symbols





Alpha Laboratories Ltd

40 Parham Drive, Eastleigh, Hampshire, SO50 4NU, UK

Tel: 023 8048 3000 | Email: kits@alphalabs.co.uk

Web: www.alphalabs.co.uk

Registered in England 1215816

Please Do NOT send the completed sample to this address

Product Specifications:

- Intended Use: Home faecal Elastase kit for collection and transportation to the laboratory for analysis
- Sample Requirement: Formed faecal sample (solid or semi-solid)
- Contents: 1x CALEX device, 1x Instruction for use, 1x clear plastic bag
- Key Reminders:
 - Do not use the CALEX beyond the expiry date Use a formed sample
 - Avoid contact with toilet water or urine Read instructions carefully

Frequently Asked Questions (FAQ):

Q: Can I reuse the CALEX device for multiple samples?

A: No, the CALEX device is for single-use only. Reusing it can lead to inaccurate results.


Q: What should I do if I accidentally get urine in the sample?

A: If urine gets in the sample, discard it and collect a new sample to ensure accurate testing results.

Q: How should I store the collected sample before sending it to the laboratory?

A: Store the collected sample in the provided clear plastic bag and return it to your GP or hospital laboratory as soon as possible.

Documents / Resources



Direct Sampling with the CALEX® Extraction Device

How to Collect Your Samples

BEFORE YOU BEGIN...

1. COLLECT THE FAECAL SAMPLE

2. REMOVE THE CALEX CAP

3. TAKE THE SAMPLE

4. CHECK THE SAMPLE

5. RE-SEAL THE CALEX CAP

6. DO THE ONLY CHECK

DO NOT UNLOCK THE BLUE CAP AND DO NOT SHUT THE CAPS FROM THE CALEX CAP

Checklist

Answers to Frequently Asked Questions

Important information

Important information

Important information

[Alpha Laboratories CALEX Faecal Calprotectin Extraction Device \[pdf\] User Manual](#)

CALEX Faecal Calprotectin Extraction Device, CALEX, Faecal Calprotectin Extraction Device, Calprotectin Extraction Device, Extraction Device, Device

References

- [User Manual](#)

Related Posts



[ALPHA OMEGA WATER 220011 Crystal Device Activator House Instruction Manual](#)

House installation PLEASE READ Alpha Omega Water® Activator - house installation Technical details model

220011: Dimensions: housing 65cm...

[NPS alpha Dog Training Device Instruction Manual](#)

NPS alpha Dog Training Device Important information Welcome to NPS DO NOT start



re before...

[Emporia Smart Device User Guide](#)

Emporia Smart Device



[Xerox Device Agent User Manual](#)

Xerox Device Agent User Manual - Optimized PDF
Xerox Device Agent User Manual - Original PDF

alpha

laboratories

alpha laboratories, CALEX, CALEX Faecal Calprotectin Extraction Device, Calprotectin Extraction Device, device, Extraction Device, Faecal Calprotectin Extraction Device

Leave a comment

Your email address will not be published. Required fields are marked *

Comment *

Name

Email

Website

☐ Save my name, email, and website in this browser for the next time I comment.

Post Comment

Search:

e.g. whirlpool wrf535swhz

Search

[Manuals+](#) | [Upload](#) | [Deep Search](#) | [Privacy Policy](#) | [@manuals.plus](#) | [YouTube](#)

This website is an independent publication and is neither affiliated with nor endorsed by any of the trademark owners. The "Bluetooth®" word mark and logos are registered trademarks owned by Bluetooth SIG, Inc. The "Wi-Fi®" word mark and logos are registered trademarks owned by the Wi-Fi Alliance. Any use of these marks on this website does not imply any affiliation with or endorsement.