



AlorAir-R WiFi Connection App User Guide

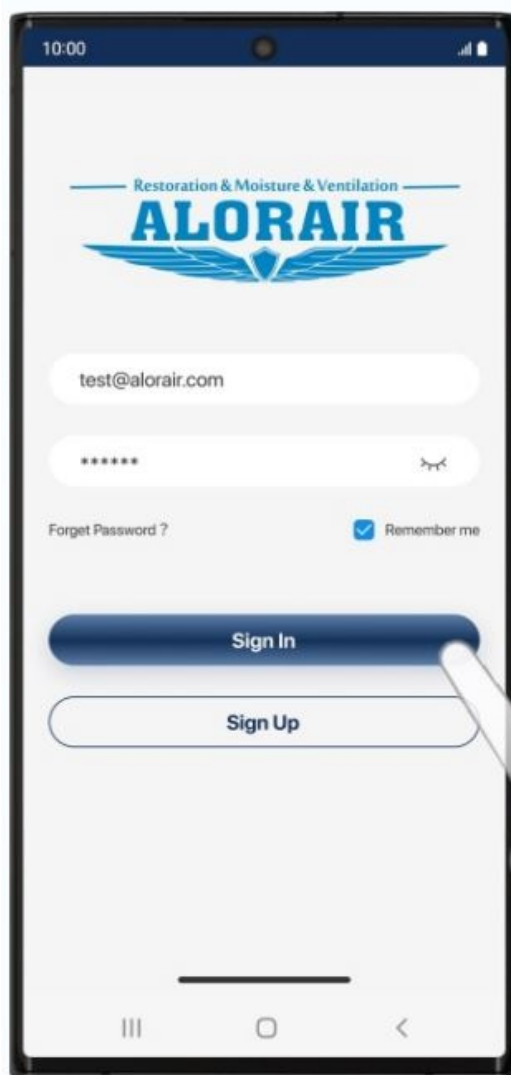
[Home](#) » [Alorair](#) » AlorAir-R WiFi Connection App User Guide 

Contents

- [1 AlorAir-R WiFi Connection App](#)
- [2 Product Usage Instructions](#)
- [3 How it works](#)
- [4 Documents / Resources](#)
- [5 Related Posts](#)



AlorAir-R WiFi Connection App



Product Information

The AlorAir -R is a smart dehumidifier that can be controlled using the AlorAir-R mobile app. It features a simple and smart design, making it easy to use and operate. The dehumidifier model used in the instructions is the STORM LGR Extreme.

Product Usage Instructions

1. Download and install the AlorAir-R app from the App Store (for Apple users) or Google Play Store (for Android users).
2. Sign up and log in to your account within the app.
3. Follow the steps provided in the app to locate your dehumidifier model (STORM LGR Extreme).
4. On the dehumidifier, press the MENU key to switch off the hotspot.
5. Reset your device by simultaneously pressing the PURGE key and the MENU key for 3-5 seconds. Once you hear a beep, the WI-FI icon on the upper right of the board will start flashing.
6. Turn on your phone's Bluetooth and return to the app. Click the Switch button to connect to the Bluetooth-BK-alorair.
7. Connect to your home Wi-Fi network. Make sure to enter the correct password, as an incorrect password will result in connection failure.
8. If the connection is successful, you can now start controlling the device through the app.
9. If the connection fails, follow the app's prompts to troubleshoot and restart the connected device.

10. To add a new device, enter the device list within the app and click the + button to continue adding new devices.

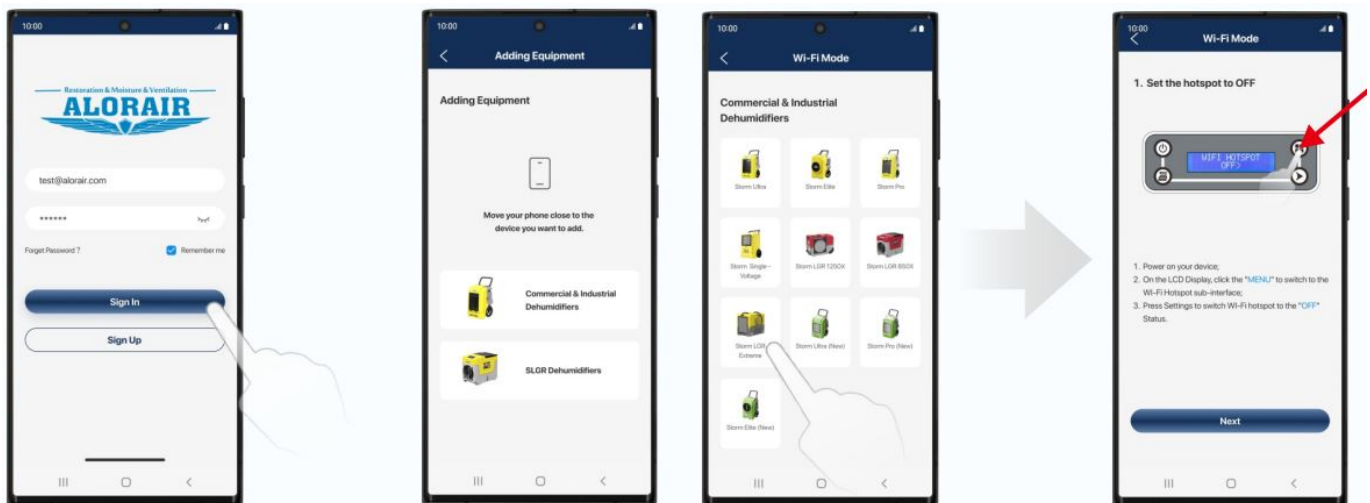
App



Download and install AlorAir-R from the App Store or Google Play Store.



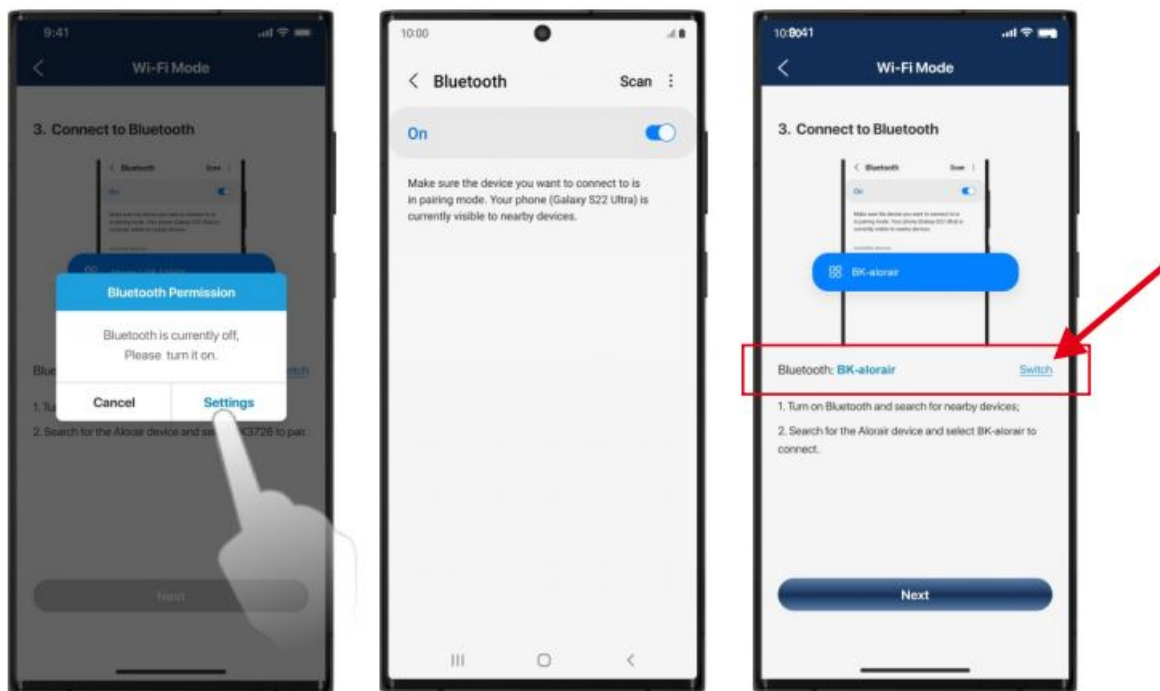
How it works



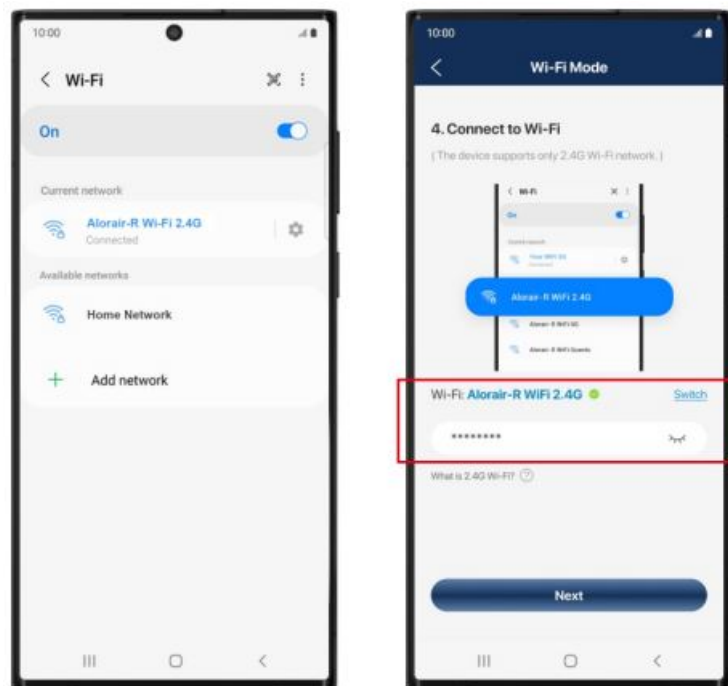
1. Sign up and login your account.
2. Find your dehumidifier model.
 - Let's take STORM LGR Extreme as an example
3. Follow the steps on the App, press the "MENU" key of the board to switch the hotspot to "OFF".



4. Follow the App steps to reset your device
 - Press the "PURGE" key and the "MENU" key at the same time for 3-5 seconds.
 - After the system beeps, the WI-FI icon will start flashing on the upper right of the board.

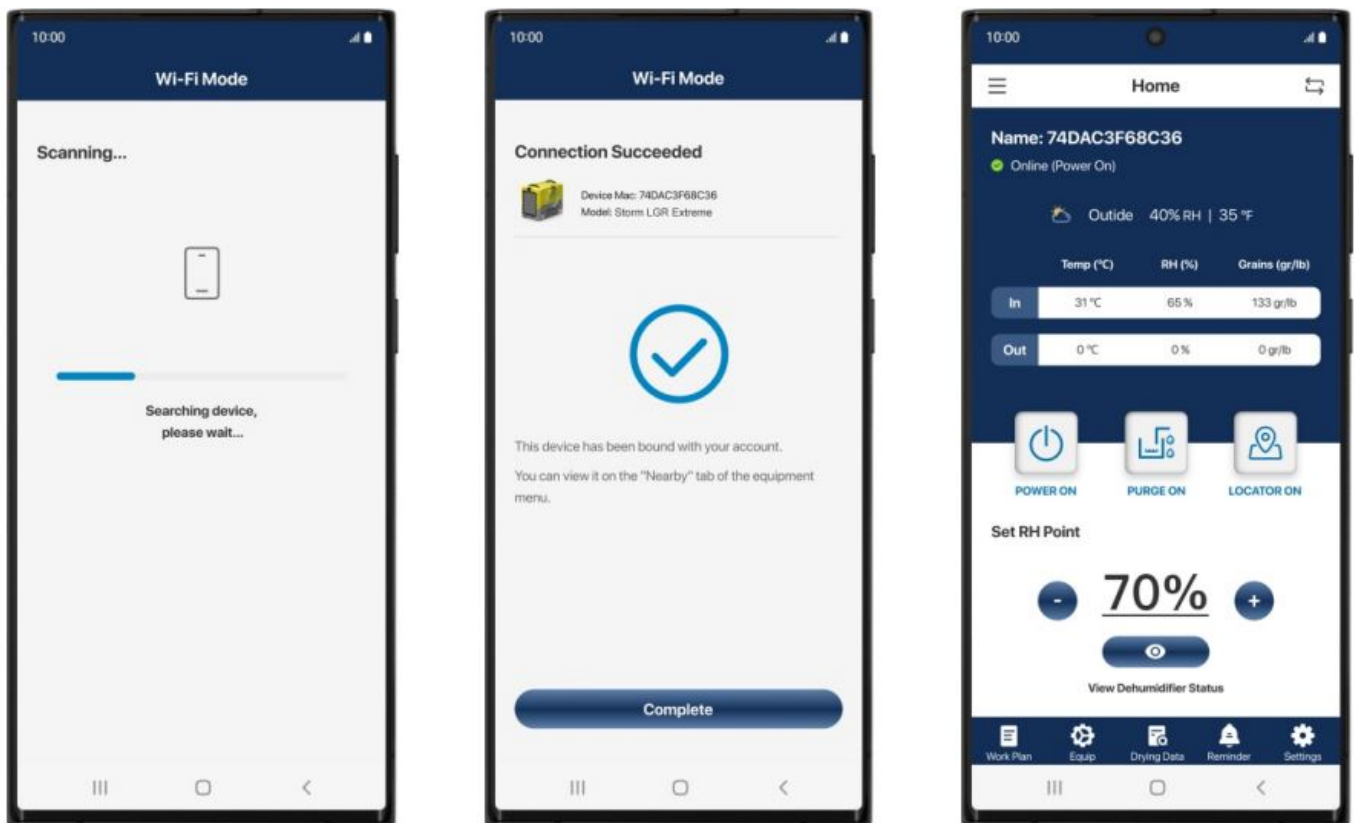


5. Turn on your phone's Bluetooth, return to the app, click the "Switch button", and connect to the Bluetooth-BK-alorair.



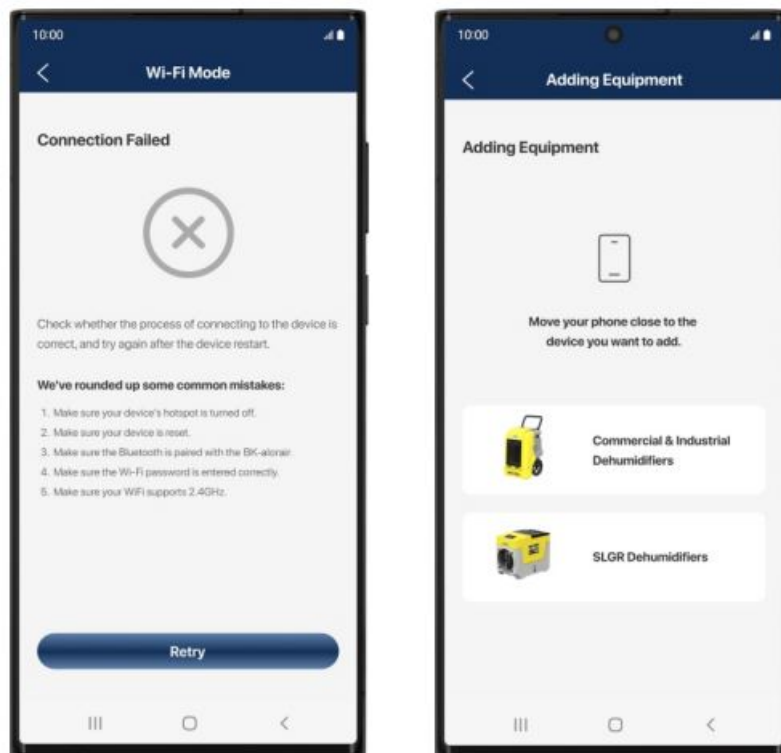
6. Connect to the home Wi-Fi.
 - Wrong password will cause subsequent connection failure.

Connection Success



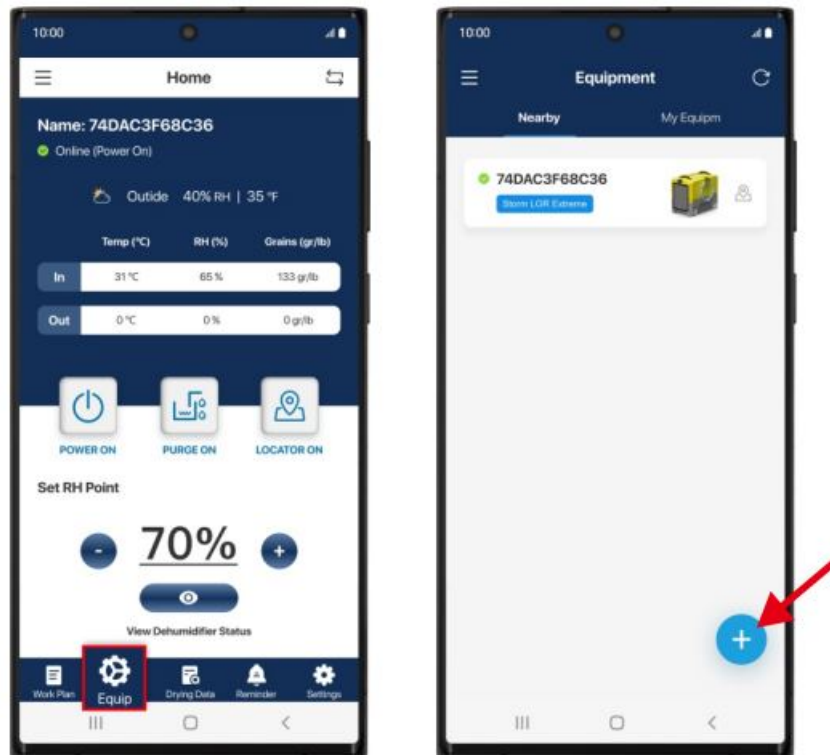
- Once the app has finished Connection, you can start controlling the device

Connection Failure



- If it fails, follow the APP prompts to troubleshoot and restart the connected device.

Add New Device



- Enter the device list, you can click the “+” button to continue adding new.

Documents / Resources

	<p>ALORAIR AlorAir-R WiFi Connection App [pdf] User Guide AlorAir-R, AlorAir-R WiFi Connection App, WiFi Connection App, Connection App, App</p>
	<p>ALORAIR AlorAir-R WiFi Connection App [pdf] User Guide AlorAir-R, AlorAir-R WiFi Connection App, WiFi Connection App, Connection App, App</p>