



AlorAir-R App for Android Instruction Manual

[Home](#) » [Alorair](#) » AlorAir-R App for Android Instruction Manual 

Contents

- [1 AlorAir-R App for Android App Direct Connect Manual](#)
 - [1.1 TWO CONNECTION MODES](#)
- [2 Documents / Resources](#)
- [3 Related Posts](#)

AlorAir-R App for Android App Direct Connect Manual



The screenshots are from the Android version of our App.



**Download and install AlorAir-R from the App Store or Google Play Store.
Log in or sign up for a new account.**

TWO CONNECTION MODES

1. Wi-Fi Connection (Priority use)

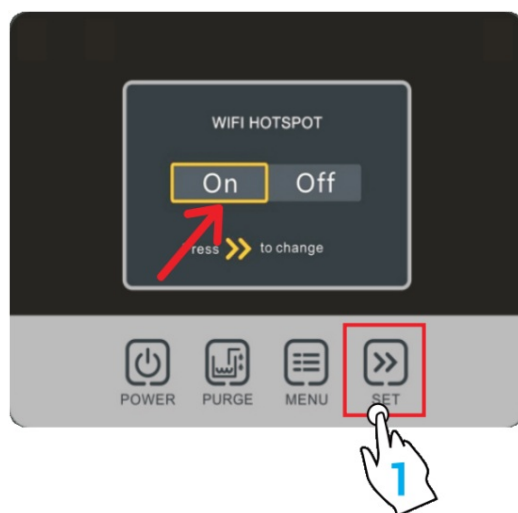
Mobile phone wireless connection home router.

2. Direct Connection

In the absence of any Wi-Fi or 4G Network, the phone directly connects to the dehumidifier (Network starts with HF-LPT230).

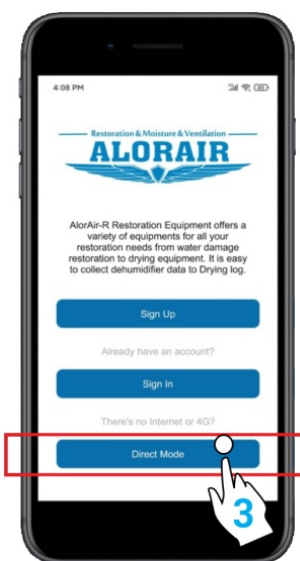


- 1 On the LCD display, click the “MENU” to switch to the Wi-Fi Hotspot sub-interface, then press “Setting” to switch Wi-Fi hotspot to the “ON” Status.
- 2 Then select HF-LPT230 Wi-Fi and connect to it on your phone.

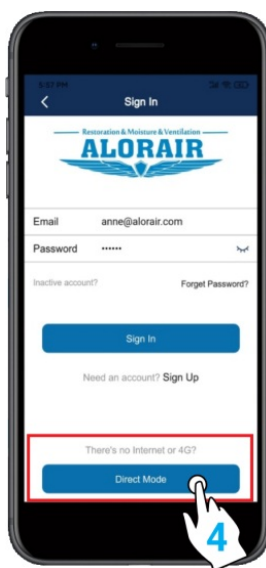


MENU

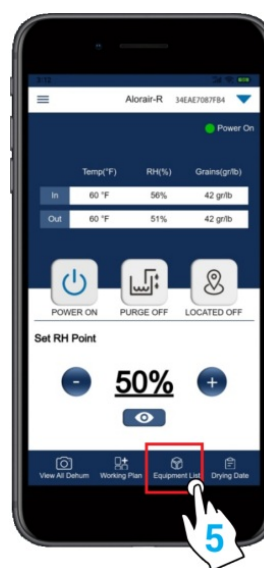
- 3 The following three interfaces can enter the “Direct Mode”.



Start page

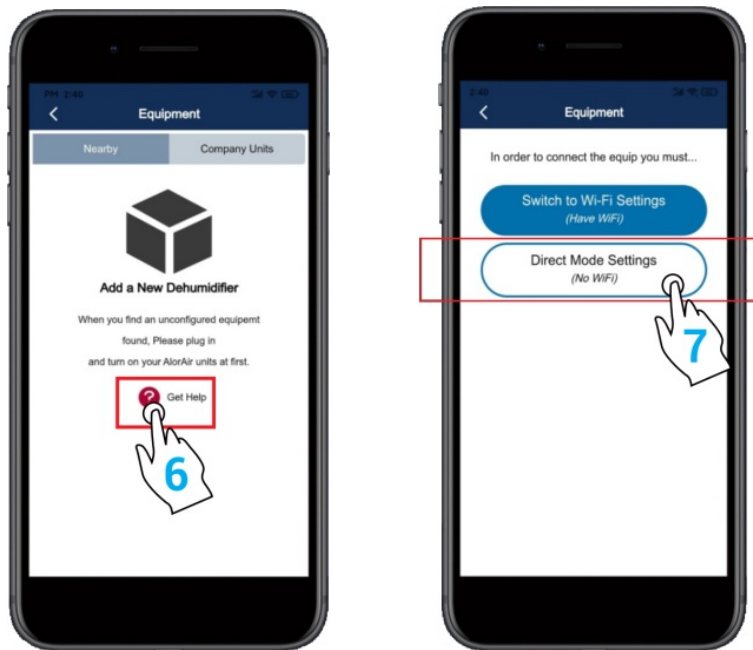


Login page

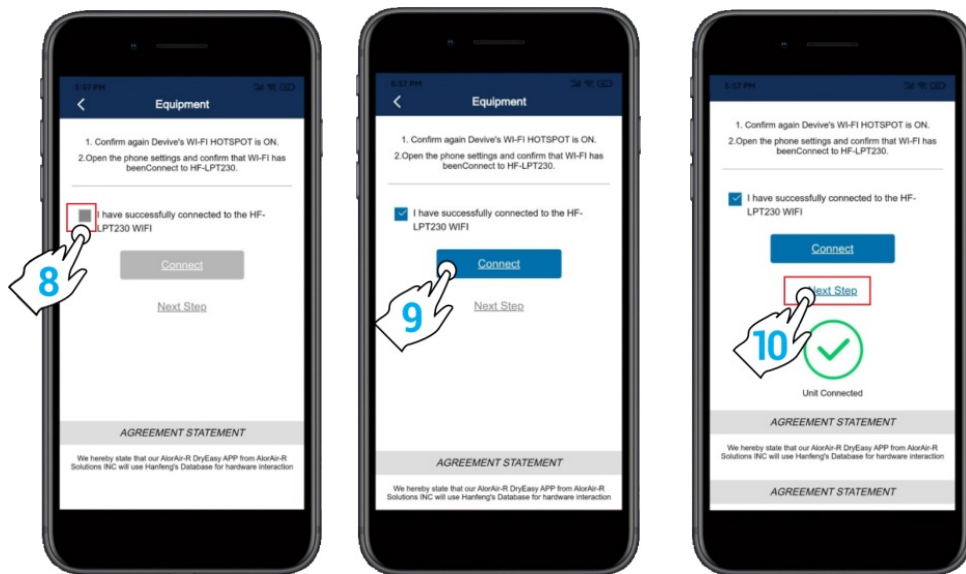


Home page

- 4 In the “Equipment-Nearby” sub-interface, click to “Get help” and select “Direct Mode Settings” button to enter the next step.

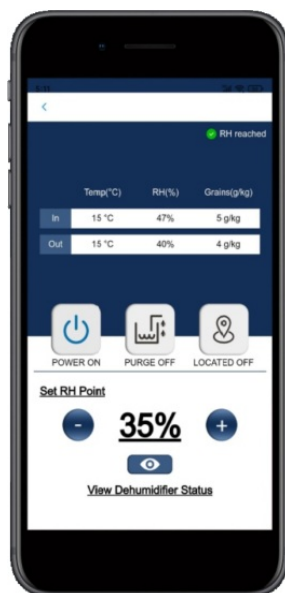


5 After making sure to complete the two conditions, click “I have successfully connected to HF-LPT230” Hotspot, then click the “connect” button, when the green hook icon appears, click ” **Next step** ” button to enter the Direct connect mode home page.



6 The direct connection step has ended. AlorAir recommended that users disconnect or delete other Wi-Fi during use.

(In order to avoid automatically switching Wi-Fi in the background, which may cause the direct connection function to become unstable!)



Documents / Resources



[ALORAIR AlorAir-R App for Android](#) [pdf] Instruction Manual
AlorAir-R App for Android, AlorAir-R, App for Android