



[Home](#) » [ALOGIC](#) » **ALOGIC WPA-BASE-1CB Unite 4K Wireless Presentation System Instruction**

Manual 

Contents [[hide](#)]

[1 ALOGIC WPA-BASE-1CB Unite 4K Wireless Presentation System](#)

[2 Specifications](#)

[3 Package Contents](#)

[4 Ports and Features](#)

[5 Instructions to Set Up and Use the Device](#)

[6 Using the Device](#)

[7 Troubleshooting](#)

[8 FCC Compliance Statement](#)

[9 FAQ](#)

[10 Documents / Resources](#)

[10.1 References](#)



ALOGIC WPA-BASE-1CB Unite 4K Wireless Presentation System

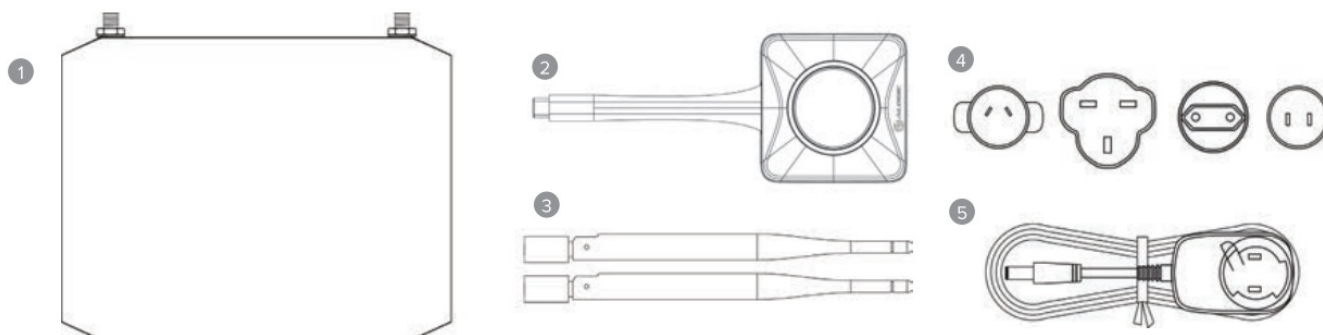


Specifications

Category	Details
Model	WPA-BASE-1CB (Wireless Presenter Base Station + 1 Button) WPA-BTN-1C (Additional Wireless Presenter Button – sold separately)
Device Compatibility	USB-C Button: Compatible with Windows, macOS, ChromeOS computers that support USB-C DisplayPort Alternate Mode Direct Connection: AirPlay, Google Cast, Miracast, DLNA
Video Support	Input: Up to 3840×2160 @ 30Hz Output: 3840×2160, 1920×1200, 1920×1080, 1280×720, 1024×768
Video Latency	150ms
Video Encoding	H.264, H.265

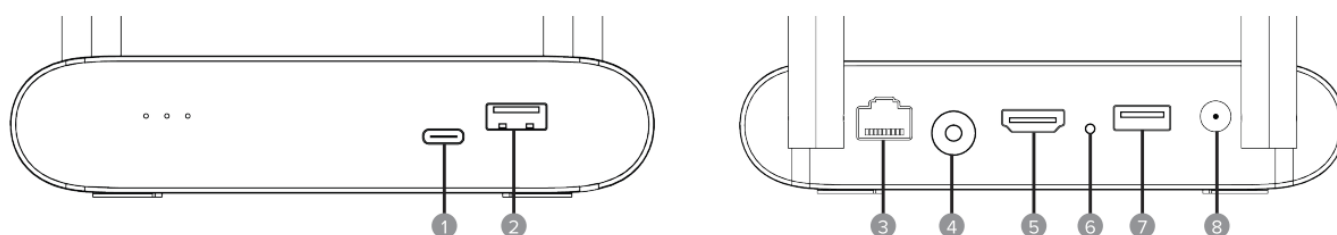
Category	Details
Audio Support	HDMI audio output Stereo analog audio output via 3.5mm jack
Ports	1 × HDMI 2.0 (display) 2 × USB-A (HID input devices) 1 × USB-C (for pairing only) 1 × 3.5mm audio output 1 × 100Base-T Ethernet
Frequency Bands	2.4GHz / 5GHz
Wireless Encryption	WPA2-PSK
Wireless Range	Up to 30 meters (unobstructed)
Power	Base Station: 12VDC 1A Presenter Button: USB-C, 5VDC <3W
Dimensions	Base Station: 142 × 109 × 30 mm Presenter Button: 159 × 62 × 17 mm
Weight	Base Station: 333.8 g Presenter Button: 67 g
Environment	Operating Temp: 0°C to +35°C Humidity: 10% to 85% RH (non-condensing)
Compliance	CE, UKCA, RCM, RoHS, FCC FCC ID: 2ATCA-WPA-BASE, 2ATCA-WPA-BTN-C
Warranty	2 Years

Package Contents



Component	Description
Receiver (Base Station)	Receiver (Base Station)
Transmitter (Wireless Presenter Button)	Transmitter (Wireless Presenter Button)
Antennas	Antennas
Power Adapter Plugs	Power Adapter Plugs for (AU/NZ, EU, UK, and US)
Multi-Country Power Adapter	Multi-Country Power Adapter DC12V/1A

Ports and Features

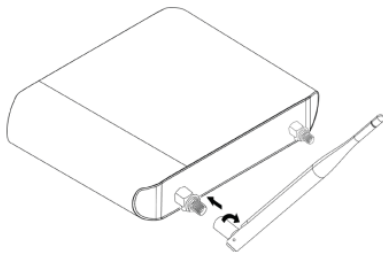


Port / Feature	Description
USB-C	For the presenter button pairing
USB-A	For touchscreen and mouse inputs
Ethernet Port	For wired network connectivity
3.5mm Audio Output	For external speaker or headphone connection

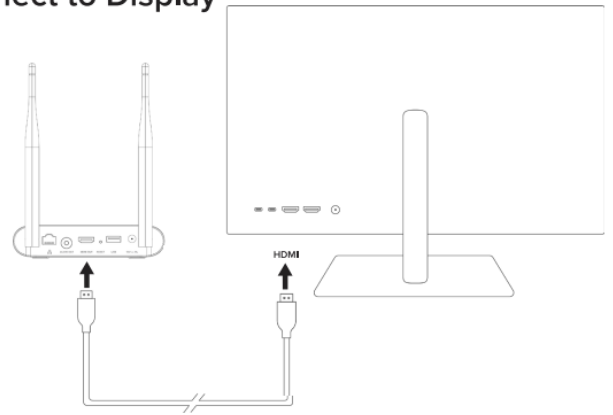
Port / Feature	Description
HDMI Display Output	For connecting to an external display
Reset Button	For resetting the device
Power Adapter Input	For connecting the power adapter

Instructions to Set Up and Use the Device

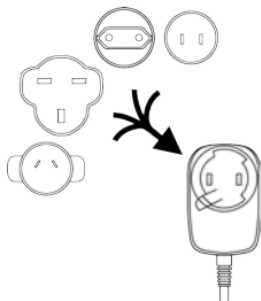
1 Install Antennas



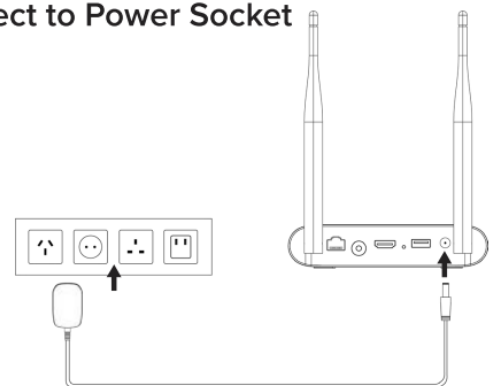
2 Connect to Display



3 Connect Power Adapter



4 Connect to Power Socket



5 Configure the Device



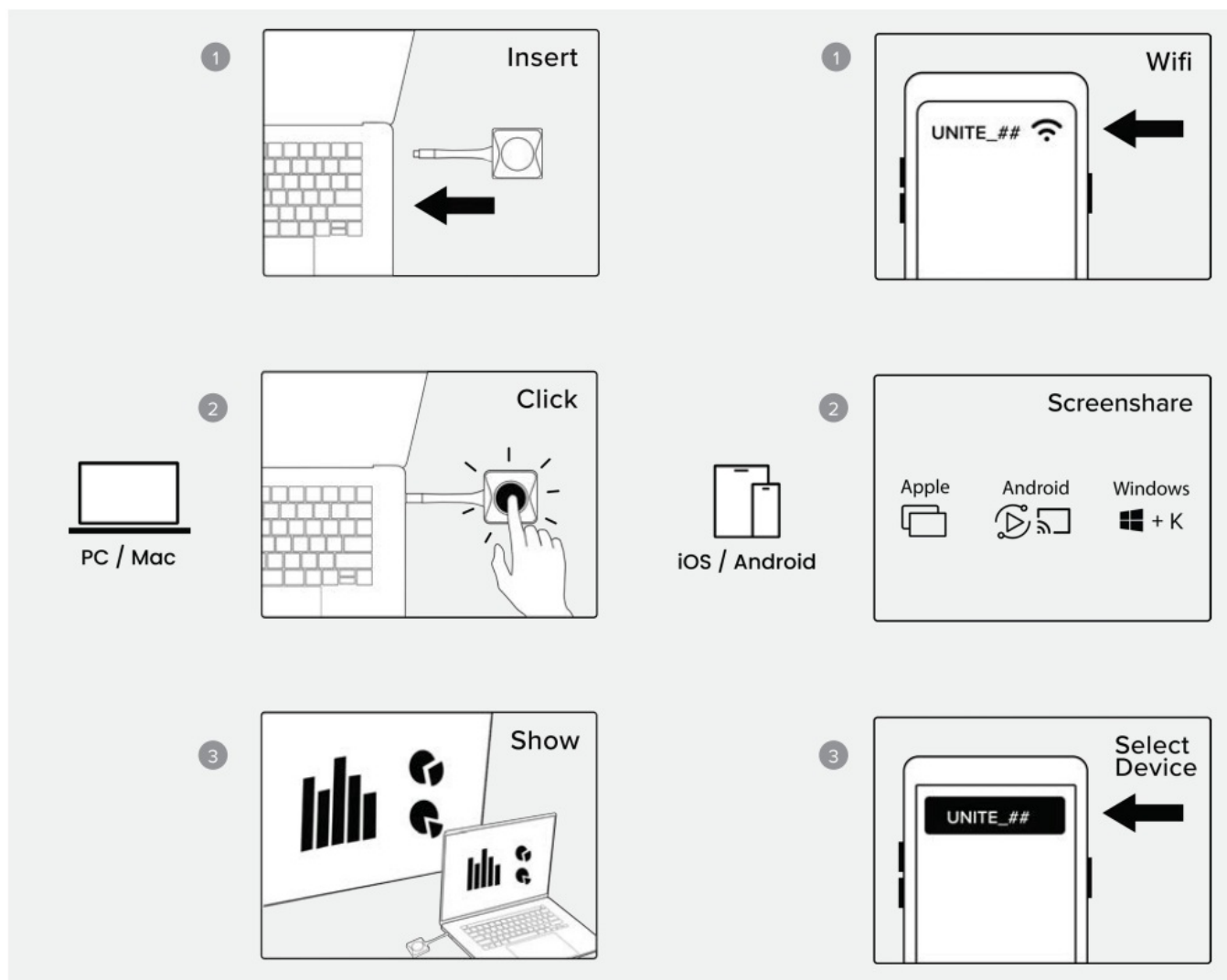
Important

Log in to the device and change the default administrator password before use.

Setting Up the Device

1. Unpack the device. Locate the two antennas and connect them to the rear of the base station. Screw the locking collars clockwise to secure the antennas in place.
2. Connect a monitor to the HDMI port on the base station. The base station can also be connected to an audio system, and USB pointing devices such as mice and touchscreens.
3. If desired, the base station may be connected to a wired network. Refer to the Installation and Administration Guide available from the ALOGIC website at www.alogic.co for important security considerations when connecting the base station to a corporate network.
4. The power adapter is supplied with four plugs to suit the power outlets in different countries. Choose the correct plug for your country and connect it to the power adapter by inserting into the opening and rotating into place.
5. Connect the power adapter to the base station and to a wall power outlet and ensure that the display is switched on. Once the base station has booted up and is ready for use, instructions will be shown on the display to guide users on how to show their computer on the display wirelessly.
6. Connect to the IP address of the base station with a browser to change the name of the device and configure other settings. The default credentials to access the web configuration interface are as follows.
 - **User:** admin
 - **Password:** admin
7. It is recommended that the password is changed prior to using the device to avoid unauthorised access to the settings.

Using the Device



1. Connect the included wireless presenter button to a USB-C port on a computer. The USB-C port used must support video output.
2. It may take up to 20 seconds for the button to start receiving video from the laptop and be ready to send it to the display when it is plugged in to the laptop. When the LED ring flashes blue and then stays solid blue it is ready to present.
3. Press the button to start showing the computer on the display. The LED ring will turn red to indicate that video is being sent. Press the button a second time to stop showing the computer on the display.
4. Mobile devices can be shown on the display by using native screen casting from the device. The device supports AirPlay (iOS), Google Cast (Android) and Miracast (Windows/Android) for connecting to the display directly from these devices.
5. More than one device can connect to the wireless presenter at the same time. Up to two devices can be shown on screen at the same time, either using a connection button or by connecting directly.

Adding and Pairing Buttons

- Up to 16 buttons may be used with each wireless presenter base station for instant switching between devices. Additional buttons are available for purchase separately (model WPA-BTN-1C).
- Buttons added to the system must be paired with the base station by plugging them into the USB-C port on the front of the base station before they can be used. Existing buttons may also need to be paired with the base station if a significant configuration change occurs such as a firmware update having been applied.
- To pair presenter buttons with the base station, connect the button to the USB-C port on the front of the base station. The button has successfully paired with the base station when the red light on the button illuminates and remains on.

Resetting the Device

To factory reset the device, press and hold the reset button for 5 seconds.

Troubleshooting

Symptom	Resolution
Video breaks up or drops out	<ul style="list-style-type: none"> – Use a high-quality, fault-free HDMI cable between base station and display. – Keep video cable as short as possible. – Change WiFi channels via web interface to avoid interference with other devices.
The presenter button does not allow video to be sent to display	<ul style="list-style-type: none"> – Ensure computer's USB-C port supports DisplayPort Alternate Mode. – Check other USB-C ports if one fails. – Re-pair the presenter button with the base station.
The presenter button flashes blue continuously	<ul style="list-style-type: none"> – Pair the button with the base station using the steps in the "Adding and Pairing Buttons" section.

Symptom	Resolution
Sound from a computer isn't heard when multiple computers are connected	<ul style="list-style-type: none"> – Only the last connected device outputs sound. – Disconnect and reconnect your device to make its audio take precedence.

Warning

- This device is designed for indoors use only.
- Do not deliberately damage the device or expose it to damp, direct sunlight, or high temperature conditions.
- Disassembling or failing to properly use and care for your device will void the warranty on the product.
- ALOGIC bears no responsibility for damage to the device or incidental damages arising from improper use or lack of care and is not liable for repair/replacement of the device or other damages in these circumstances.

FCC Compliance Statement

This device complies with part 15 of the FCC Rules. Operation is subject to the following two conditions:

1. This device may not cause harmful interference, and
2. This device must accept any interference received, including interference that may cause undesired operation.

Note: This equipment has been tested and found to comply with the limits for a Class B digital device, pursuant to part 15 of the FCC Rules. These limits are designed to provide reasonable protection against harmful interference in a residential installation.

This equipment generates, uses, and can radiate radio frequency energy and, if not installed and used in accordance with the instructions, may cause harmful interference to radio communications. However, there is no guarantee that interference will not occur in a particular installation.

If this equipment does cause harmful interference to radio or television reception, which can be determined by turning the equipment off and on, the user is encouraged to try to correct the interference by one or more of the following measures:

- Reorient or relocate the receiving antenna.
- Increase the separation between the equipment and receiver.
- Connect the equipment to an outlet on a circuit different from that to which the receiver is connected.
- Consult the dealer or an experienced radio/TV technician for help.

Changes or modifications to this product not authorized by ALOGIC could void the electromagnetic compatibility (EMC) and wireless compliance and negate your authority to operate the product.

Responsible Party – U.S. Contact Information

ALOGIC USA LLC 3730 Parish Ave Fremont CA 94536 USA

EU Declaration of Conformity


- Hereby, ALOGIC Corporation declares that this product is in compliance with Directive 2014/30/EU and related UK statutory instruments. The full text of the EU declaration of conformity is available at the following internet address by clicking on the Compliance Documentation link: www.alogic.co
- The contact for EU regulatory matters is ALOGIC Europe B.V., Kraijenhofstraat 137A, 1018RG Amsterdam, Netherlands.
- The contact for UK regulatory matters is ALOGIC UK Pvt Ltd, Level 3, Belmont, Belmont Road, Uxbridge, United Kingdom, UB8 1HE.

Australia/New Zealand

Environmental notices

- Disposal of waste electronic equipment



- The WEEE symbol  denotes that this product must be disposed of separately to

household waste according to local laws and regulations.

- To protect human health and the environment this product should be recycled through an appropriate service and should not be disposed of in general waste.
- Take this equipment to a designated collection point for the recycling of waste electrical and electronic equipment when disposing of the device.

Scan me



Scan me

Disclaimer

- The information contained in this document is general in nature and may not apply to all customers in all situations. ALOGIC does not warrant the correctness or suitability of the information for a particular customer's environment. No warranties are made, express or implied, that any use of the information in this document will not result in outcomes that are considered by the customer to be detrimental to the operation of their equipment or other systems and will not be held liable for any costs or damages, direct or consequential, arising as a result.
- The product to which this documentation applies is intended for communication on a computer network. The deployment of such equipment carries with it the risk of misuse through mischief or malicious acts and may pose risks to the security of connected networks and computer systems that are connected to them if not configured and deployed in a way that appropriately limits and manages these risks.
- ALOGIC advises customers to obtain assistance from a qualified IT service provider in integrating this device into their network if they do not have sufficient skills within the organisation to understand and directly manage the security of the device and their wider network and client devices.

Changes

ALOGIC may update or make changes to products and related documentation at any time and recommends periodically checking for the latest version of software and documents. The latest edition of this document can be downloaded from the ALOGIC website at www.alogic.co

Trademarks

All third-party trademarks are the property of their respective owners. Any brand and product names included in this document are provided for illustrative purposes and should not be taken as a recommendation or endorsement of those products.

Copyright ©

Copyright ALOGIC 2024. All rights reserved. Reproduction in whole or in part without written permission from ALOGIC is prohibited.

© ALOGIC. All rights reserved. Reproduction in whole or in part without permission is prohibited.

All other trademarks are the property of their owners. Tested to comply with FCC and CE Standards.

HOME OR OFFICE USE.

- ALOGIC is the trademark of ALOGIC Corporation
- ALOGIC USA LLC, California, United States
- ALOGIC Electronics India Pvt Ltd, Mumbai, India
- ALOGIC Corp Pty Ltd, Melbourne, VIC 3000, Australia
- ALOGIC UK Pvt Ltd Belmont Road, Uxbridge, UB8 1HE, United Kingdom
- ALOGIC International Ltd, 3A Chater Road, Central, Hong Kong United Kingdom
- ALOGIC Electronics Canada Inc., British Columbia, Canada
- ALOGIC Europe B.V.. Amsterdam, Netherlands

FAQ

How do I connect the device to a display?

Use an HDMI cable to connect the base station to your display.


Can I use multiple presenter buttons?

Yes, up to 8 buttons can be paired with a single base station.

What should I do if the video quality is poor?

Ensure you are using a high-quality HDMI cable and check your network connection.

Documents / Resources

	<p>ALOGIC WPA-BASE-1CB Unite 4K Wireless Presentation System [pdf] In struction Manual</p> <p>WPA-BASE-1CB, WPA-BASE-1CB Unite 4K Wireless Presentation Syste m, Unite 4K Wireless Presentation System, 4K Wireless Presentation Sys tem, Wireless Presentation System, Presentation System</p>
---	---

References

- [User Manual](#)

ALOGIC

4K Wireless Presentation System, ALOGIC, Presentation System, Unite 4K Wireless Presentation System, Wireless Presentation System, WPA-BASE-1CB, WPA-BASE-1CB Unite 4K Wireless Presentation System

—Previous Post

[ALOGIC Ark Pro 600mAh Power Bank User Guide](#)

Leave a comment

Your email address will not be published. Required fields are marked *

Comment *

Name

Email

Website

☐ Save my name, email, and website in this browser for the next time I comment.

Post Comment

Search:

e.g. whirlpool wrf535swhz

Search

[Manuals+](#) | [Upload](#) | [Deep Search](#) | [Privacy Policy](#) | [@manuals.plus](#) | [YouTube](#)

This website is an independent publication and is neither affiliated with nor endorsed by any of the trademark owners. The "Bluetooth®" word mark and logos are registered trademarks owned by Bluetooth SIG, Inc. The "Wi-Fi®" word mark and logos are registered trademarks owned by the Wi-Fi Alliance. Any use of these marks on this website does not imply any affiliation with or endorsement.