

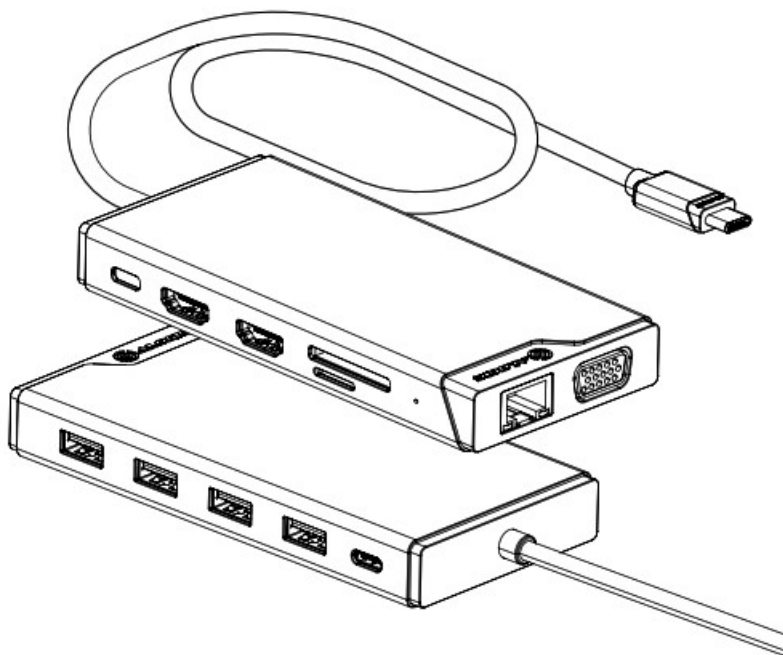


ALOGIC DV3 Universal Triple Display Docking Station User Guide

[Home](#) » [ALOGIC](#) » ALogic DV3 Universal Triple Display Docking Station User Guide 



Universal 12-in-1 Mini Dock – DV3
Triple Full HD Display



Quick Start Guide

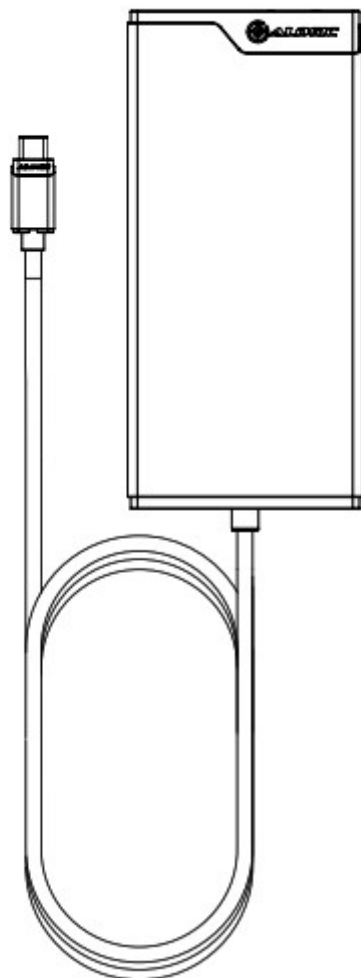
Contents

- [1 Package Contents](#)
- [2 Specifications](#)
- [3 Instructions](#)
- [4 Resolution Support Table](#)
- [5 USB-C Port Video and Charging Support](#)
- [6 Troubleshooting](#)
- [7 Documents / Resources](#)
- [8 Related Posts](#)



Package Contents

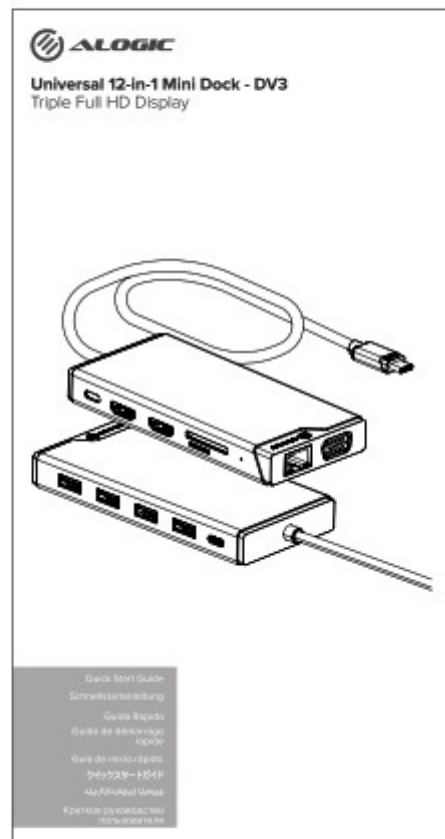
①



②

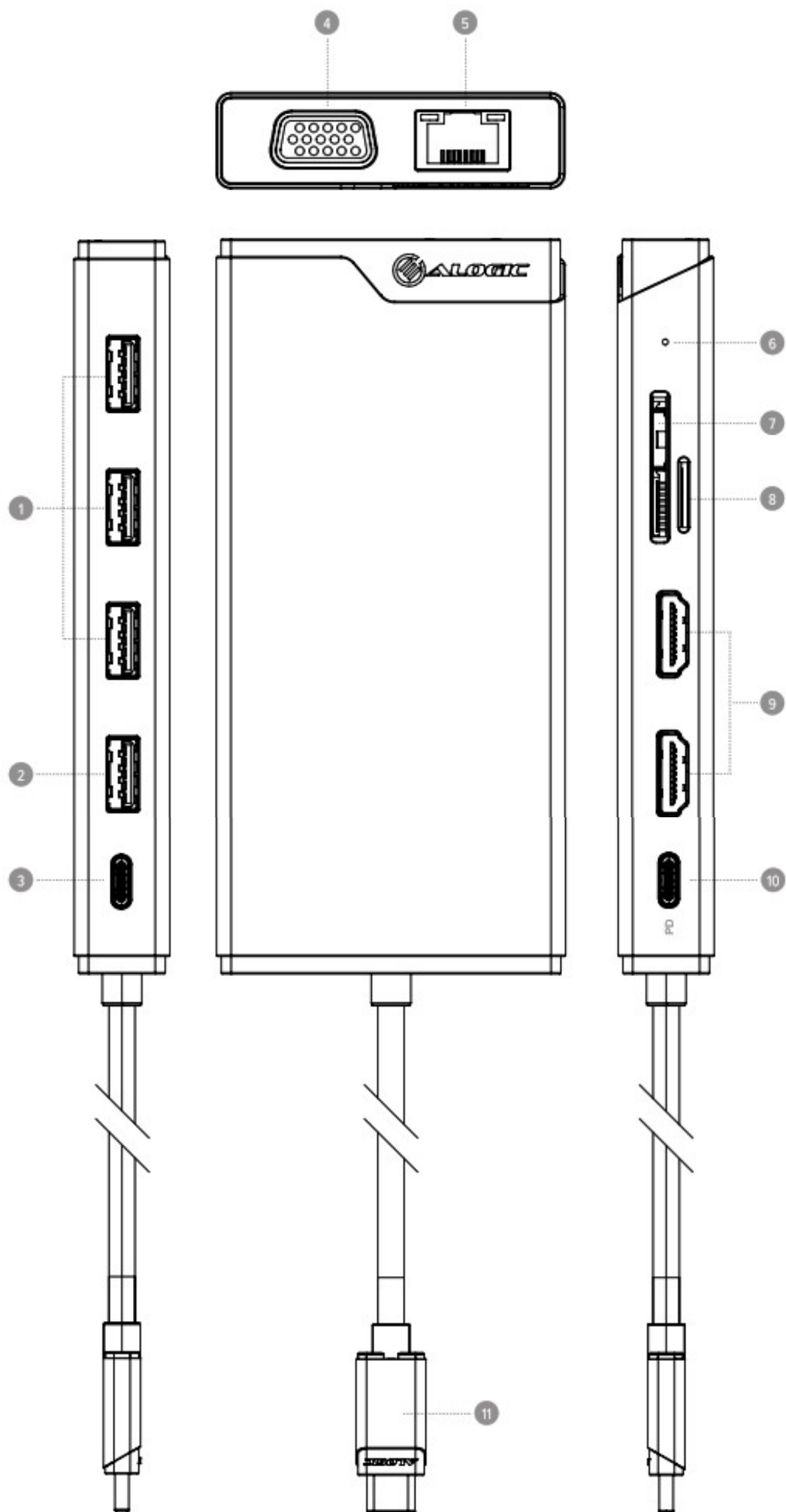


③



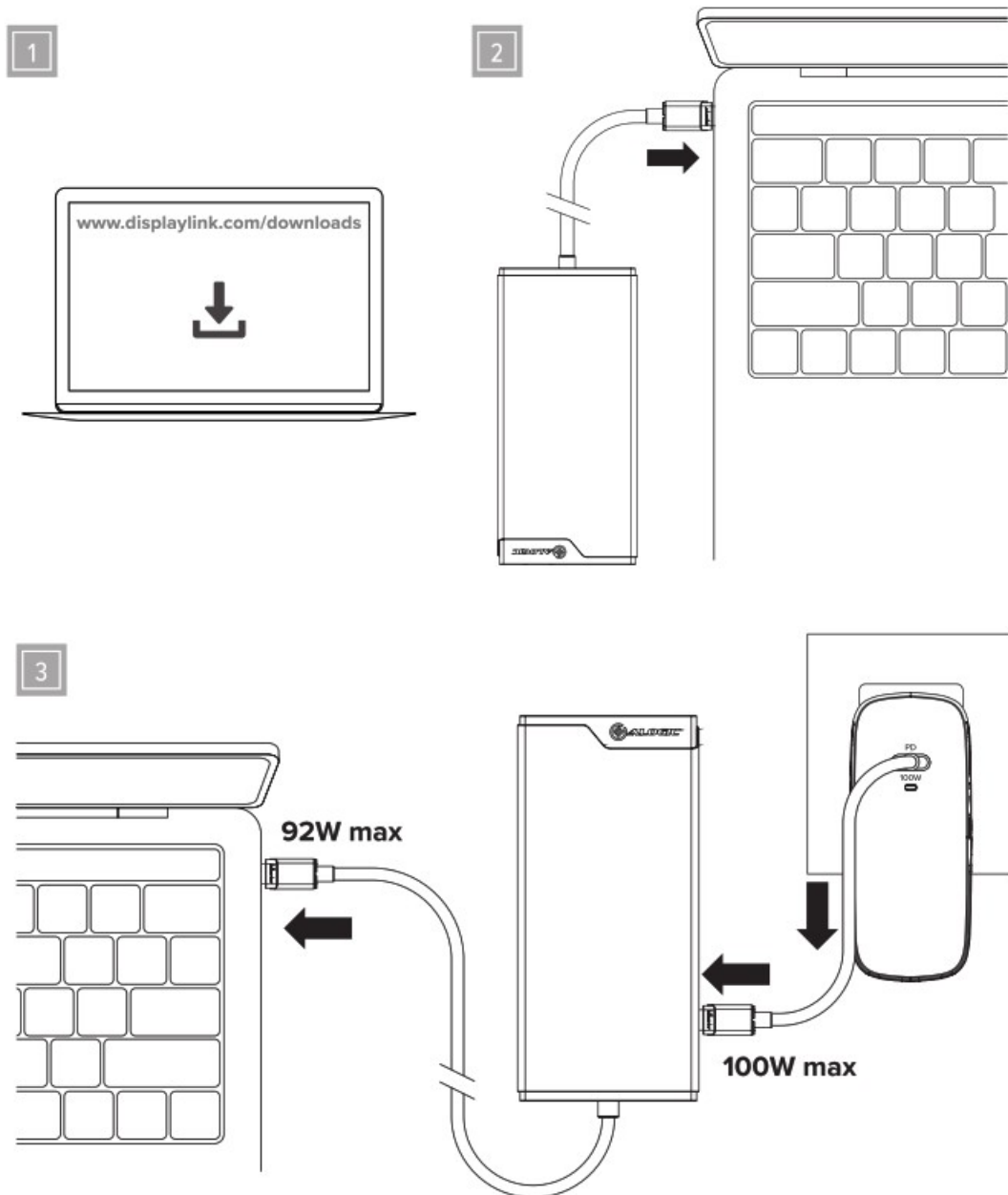
1. Universal 12-in-1 Mini Dock – DV3
2. USB-C to USB-A Adapter
3. User Manual

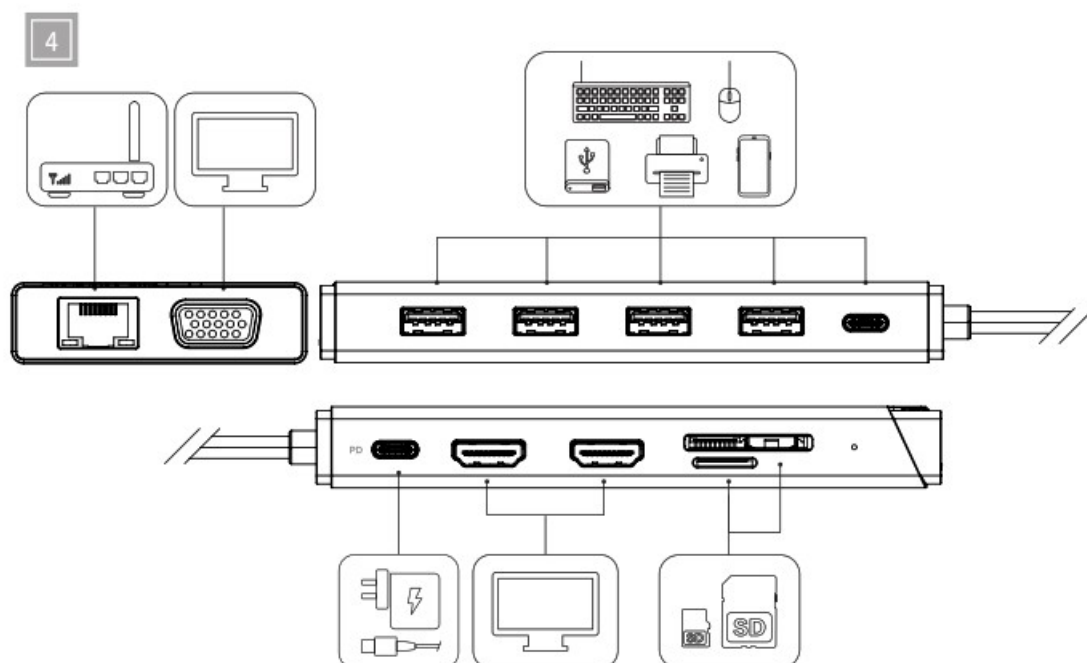




1. USB-A 2.0 port – 480Mbps
2. Porta USB-A 2.0 – 480 Mbps
3. USB-C 3.1 port – 5 Gbps, backward compatible with USB 2.0
5. VGA Video (to Monitor)
6. Gigabit Ethernet
7. Gigabit Ethernet

8. LED Indicator
9. SD Card Slot
10. Micro SD Card Slot
11. HDMI Video (to Monitor)
- 12 USB8-C PD input (100W/20V/5A)
- 13 USB-C Connector (to computer)





Specifications

Model	DUCDDV3	
Dimensions	127X60X16.5mm (LxWXH)	
Weight	150g	
Output	1x USB-C – Power from USB PD power adapter 2x HDMI 1x VGA 1x SD Card & Micro SD Card	4x RJ45 Ethernet 1Gbps 3x USB-A 2.0 (480Mbps) 1x USB-A 3.1 (5Gbps) 1x USB-C 3.1 (SGbps)
Input	1xUSB-C	
Power	Bus powered from host Supports USB PD 3.0 Power Delivery passthrough from an external power adapter (optional) up to 100W (20V SA)	
Video Resolution	HDMI 1 port output HOMI 2 port output VGA port output	4920×1080@'60Hz 41920xi080.c60Hz 1920×1080.4'60Hz
Device Compatibillty	Google Chrome OS, macOS, Windows 8 and later, XP, Linux, Vista; plug and pl ay	
Compliance	CE, FCC, UKCA	
Warranty	2 Years	

Notes

1. When the power demands of the connected devices to the dock exceed the available power of the connected computer, connected devices may stop responding and a warning within the operating system may appear. If this occurs unplug the dock and remove connect devices before plugging the dock back into the computer.

- consider plugging in any high-power consumption devices directly to the computer's available ports.
2. When plugging and unplugging the USB-C PD port any connected devices will have their connection restored.
To prevent any data loss, avoid plugging and unplugging the USB-C PD port while the device is in use.
 3. Ethernet connection supports plug and play when used with Windows systems. For Mac systems configuration within the Operating System may be required.

Thank you for purchasing this quality ALOGIC product. The ALOGIC Universal 12-in-1 Mini Dock – DV3 is a full featured docking solution In a compact form factor, designed to turn your notebook Into a portable workstation or extend the capability of a desktop setup.

Instructions

(Refer to the Images on the previous pages)

1. Installing the Driven

The dock uses DisplayLink technology to provide universal support for a wide range of computers and operating systems. The latest DisplayLink software should be installed following these steps:

- Download the DisplayLink driver for your operating system from www.displaylink.com/downloads
- Run the installer once downloaded and follow the prompts
- Restart your machine

2. Connecting the Dock to the Laptop

Connect the USB-C cable attached to the dock to your computer. The device is Plug and Play compatible and will be detected and configured by your computer automatically. This process will take a few seconds the first time you plug the device into your laptop. You may receive a notification that it has been installed and is ready for use.

Once the device has been recognised and set up by your computer you can connect other devices as desired such as monitors. USB devices and a network cable.

3. Connecting a Power Adapter (Optional)

When the dock is connected to a computer that supports charging using USB Power Delivery (USB PD) it can pass up to 100W of power from an external power adapter (not included) to charge the computer. To charge the laptop through the dock, connect a USB -C PD power adapter to the USB-C port 10 on the end of the dock and connect the power adapter to a mains power outlet

4. Connecting Devices to the Dock

Connect external devices such as monitors. USB devices, Ethernet network cable and headphone/ink to the dock as necessary.

Resolution Support Table

The quantity and resolutions of video outputs supported depend on the capability of the connected computer. This dock supports simultaneous output on ail three video ports as resolution up to FHD (1920×1080 60Hz).

Single Display

HDMI 1. FHO 920408 Oe GOHF

HDMI 2. FHD (1920×1080)@60Hz

VGA – FHD (1920×1080)@60Hz

USB-C Port Video and Charging Support

Not all USB-C ports on laptops support video output and/or charging using USB PD. Many Windows and Chromebook computers have multiple USB-C ports, but only support video output and charging on one or two of them.

If using a Windows or Chromebook machine it is important to ensure that you plug the device into a port which supports video output for it to be able to show video on external monitors. If you usually use a particular USB-C port to connect your laptop's USB charger, it is likely that this port also supports video output and we suggest trying the dock with this port.



Many USB-C ports that have no labelling support video output, however USB-C ports which have a DisplayPort logo or Intel Thunderbolt logo printed next to them almost certainly support video output and you should look for these icons next to the ports on your computer.

DisplayPort Logo Intel Thunderbolt Logo

MacBook devices are equipped with Thunderbolt USB-C ports and support video output and charging on all ports. If in doubt about whether a USB-C port supports video output, consult the user manual for your computer or the support information on the manufacturer's website. References made to a USB-C port having DisplayPort, DP or Alt Mode capabilities is a strong indicator that the USB-C port supports video output.

Troubleshooting

Symptom	Solution
Video doesn't show on external display	<ul style="list-style-type: none">• Ensure the latest Display Link drivers have been installed from www.displaylink.com/downloads• Check that the cable is connected securely between the monitor and the computer• Check that the external monitor is turned on and set to the correct input• Check that your computer is detecting the external display and is set to show video on it• Check that the USB-C port on the computer that you have connected the cable to supports video output using DisplayPort Alternate Mode• If the computer doesn't detect the external monitor or output video after checking the above, restart your computer and attempt again
Video drops out intermittently	<ul style="list-style-type: none">• Check that the video cable is connected securely between the display and computer and there is no strain on the connectors
Laptop doesn't charge when a USB PD power adapter is connected to the USB-C port on the dock	<ul style="list-style-type: none">• Check that the USB PD power adapter is plugged in at the wall and switched on• Verify that the cable is plugged into a USB-C port on the computer which supports USB PD charging by plugging the cable from the power adapter directly into the USB-C port on the laptop• Check that the cable between the USB PD power adapter and the dock is connected securely• Ensure that the USB PD power adapter has a sufficient power output rating to charge the laptop

Warning

- This device is designed for indoors use only.
- Do not deliberately damage the device or expose it to damp, direct sunlight, or high temperature conditions.
- Disassembling or failing to properly use and care for your device will void the warranty on the product.
- ALOGIC bears no responsibility for damage to the device or incidental damages arising from improper use or lack of care and is not liable for repair/replacement of the device or other damages in these circumstances.

FCC Compliance Statement

This device complies with Part 15 of the FCC Rules. Operation is subject to the following two conditions:

1. this device may not cause harmful interference, and
2. this device must accept any Interference received, including interference that may cause undesired operation.

NOTE: Changes or modifications not expressly approved by the party responsible for compliance could void the user's authority to operate the equipment.

Responsible Party – U.S. Contact Information
ALOGIC USA LLC
3730 Parish Ave
Fremont CA 94536 USA


EU Declaration of Conformity

Hereby, ALOGIC Corporation declares that this product is in compliance with Directive 2014/53/EU. The full text of the EU declaration of conformity is available at the following Internet address by clicking on the Compliance Documentation link: www.alogic.co



Designed in Australia, Manufactured in China

Documents / Resources

	ALOGIC DV3 Universal Triple Display Docking Station [pdf] User Guide DV3, Universal Triple Display Docking Station, DV3 Universal Triple Display Docking Station, Triple Display Docking Station, Docking Station
---	--