



**ASKBT3W-
US Echelon
Wireless
Keyboard**



ALOGIC ASKBT3W-US Echelon Wireless Keyboard Instruction Manual

[Home](#) » [ALOGIC](#) » ALOGIC ASKBT3W-US Echelon Wireless Keyboard Instruction Manual 

Contents

- [1 ALOGIC ASKBT3W-US Echelon Wireless Keyboard](#)
- [2 FAQs](#)
- [3 WHAT INBOX](#)
- [4 Package Contents](#)
- [5 Specifications](#)
- [6 Windows Shortcuts](#)
- [7 CONNECTION](#)
- [8 FCC](#)
- [9 Documents / Resources](#)
 - [9.1 References](#)



ALOGIC ASKBT3W-US Echelon Wireless Keyboard



FAQs

• **Q: How do I know if my keyboard is paired with the device?**

- **A:** The connection light on the keyboard will stop flashing once it is successfully paired with the device.

• **Q: Can I use this keyboard with both Windows and macOS devices?**

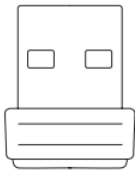
- **A:** Yes, the Echelon Wireless Keyboard is compatible with Windows, macOS, Chromebook, iOS, and Android devices.

WHAT INBOX

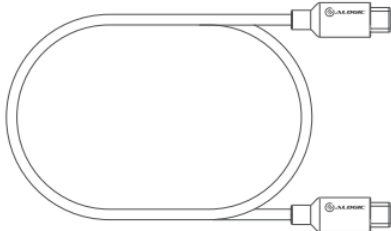
1



2



3



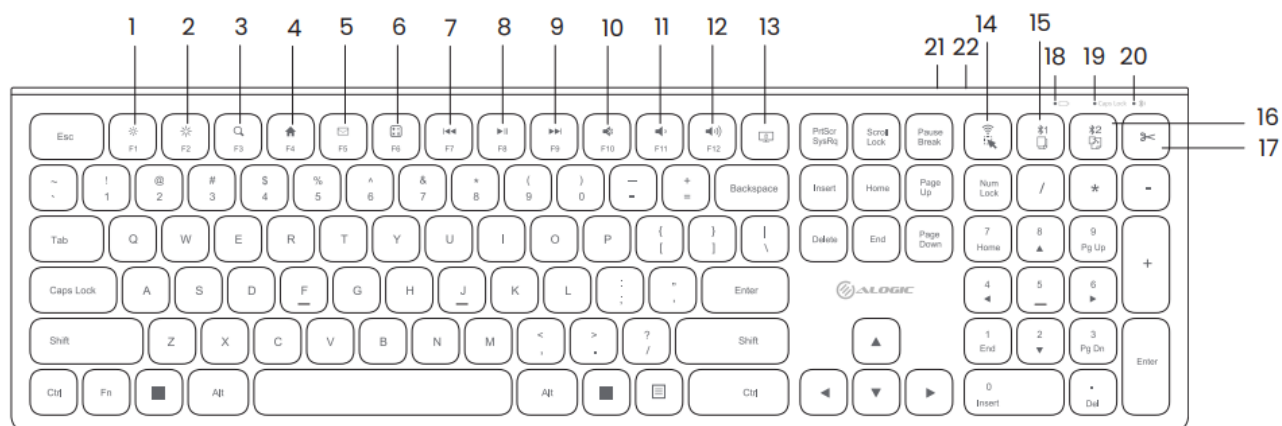
Package Contents

1. Wireless Keyboard
2. 2.4GHz Wireless Dongle (USB-A)
3. USB-C Charging Cable

Specifications

Model	ASKBT3W-US (Windows)
Device Compatibility	Windows, macOS, Chromebook, iOS, Android
Connection	Bluetooth (3.0 and 5.0), 2.4GHz Wireless Max Range: 10m
Warranty	2 Years


Windows Shortcuts



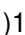

1. Decrease Brightness
2. Increase Brightness
3. Windows Search
4. Home
5. Email
6. Calculator
7. Previous Track
8. Play/Pause
9. Next Track
10. Mute
11. Volume Down
12. Volume Up
13. Lock/Power Options
14. Select All | 2.4Ghz Connection
15. Copy | Bluetooth 1
16. Paste | Bluetooth 2
17. Cut
18. Battery Indicator
19. Caps Lock Indicator
20. Connection Indicator
21. On/Off Switch
22. Charging Port (USB-C)

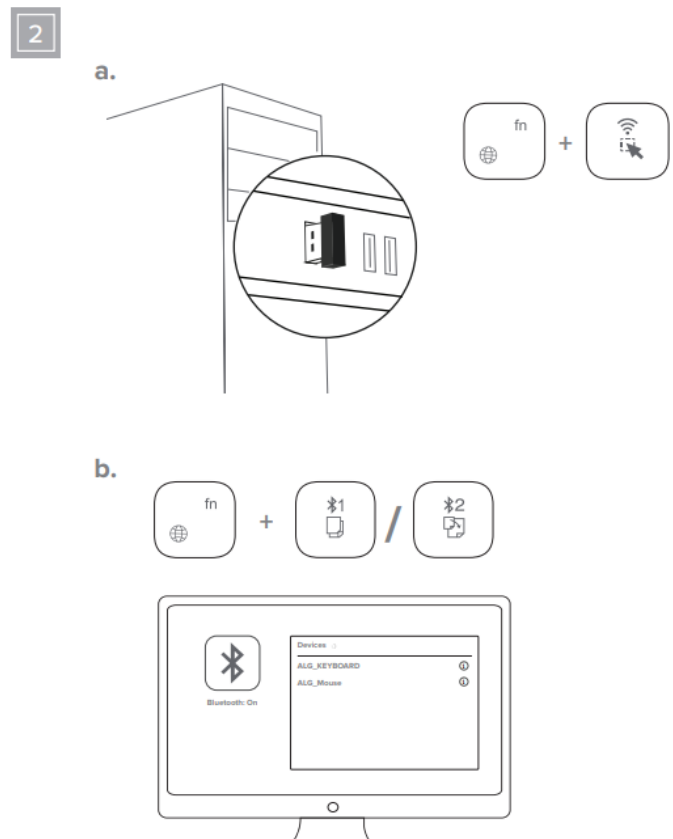
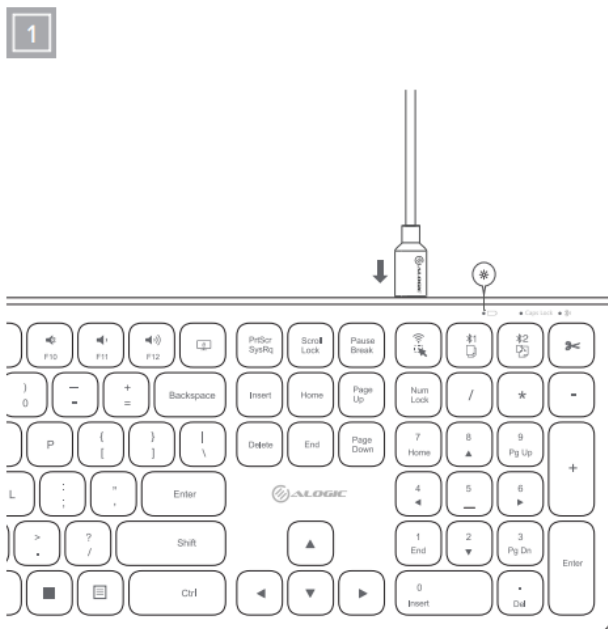
CONNECTION

Connecting via the Dongle

1. Remove the USB dongle from the underside of your mouse and plug it into your computer.
2. Turn on your keyboard.
3. Hold the “FN” and () down for a few seconds until the connection light begins flashing. Once it stops flashing, your keyboard is connected.
4. If it doesn't stop flashing after 10 seconds, remove the USB dongle from your device and plug it back in. The keyboard should now connect.

Connecting via Bluetooth

1. Press and hold FN + the ()1 or ()2 keys until the connection light begins flashing green.
2. From your device's Bluetooth menu, pair with ALG_KEYBOARD.



FCC

FCC Compliance Statement

This device complies with Part 15 of the FCC Rules.

Operation is subject to the following two conditions:

1. this device may not cause harmful interference, and

2. this device must accept any interference received, including interference that may cause undesired operation.

NOTE: Changes or modifications not expressly approved by the party responsible for compliance could void the user's authority to operate the equipment.

Responsible Party – U.S. Contact Information

- ALOGIC USA LLC
- 37524 Marsten DR
- Newark CA 94560 USA

EU Declaration of Conformity

Hereby, ALOGIC Corporation declares that this product complies with Directive 2014/53/EU. The full text of the EU declaration of conformity is available at the following internet address by clicking on the Compliance Documentation link: www.alogic.co. Designed in Australia. Manufactured in China

Documents / Resources

	ALOGIC ASKBT3W-US Echelon Wireless Keyboard [pdf] Instruction Manual ASKBT3W-US, ASKBT3W-US Echelon Wireless Keyboard, ASKBT3W-US, Echelon Wireless Keyboard, Wireless Keyboard, Keyboard
---	--

References

-  [ALOGIC | Monitor, Docking Station, Wireless Charger, Wall Chargers](#)
- [User Manual](#)

[Manuals+](#), [Privacy Policy](#)

This website is an independent publication and is neither affiliated with nor endorsed by any of the trademark owners. The "Bluetooth®" word mark and logos are registered trademarks owned by Bluetooth SIG, Inc. The "Wi-Fi®" word mark and logos are registered trademarks owned by the Wi-Fi Alliance. Any use of these marks on this website does not imply any affiliation with or endorsement.