



Contents [[hide](#)]

- [1 ALOGIC ALCMIL Illuminate Light Bar with 4k Autofocus Camera](#)
- [2 Product Specifications](#)
- [3 WHAT IN THE BOX?](#)
- [4 Package Contents](#)
- [5 Light Bar Set Up](#)
- [6 Using the Remote Control Dial](#)
- [7 Troubleshooting](#)
- [8 FCC Compliance Statement](#)
- [9 Frequently Asked Questions](#)
- [10 Documents / Resources](#)
 - [10.1 References](#)



ALOGIC ALCMIL Illuminate Light Bar with 4k Autofocus Camera



Product Specifications

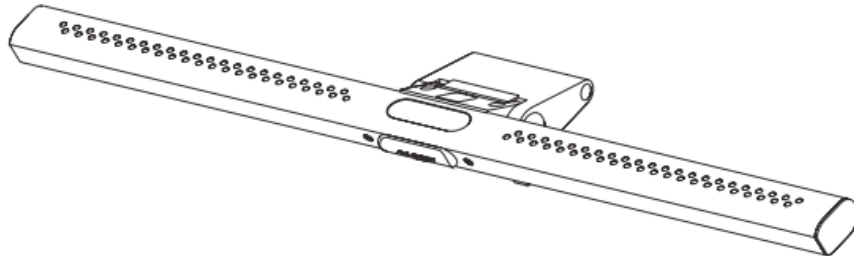
- **Weight:** Light Bar – 327g, Remote – 110g
- **Camera:** 12MP 4:3 (4000×3000), 4k 30 FPS 16:9, 1080p 60 FPS 16:9, 1080p 30 FPS

16:9, 720p 60 FPS 16:9

- **Field of View:** 50 Hz / 60 Hz

WHAT IN THE BOX?

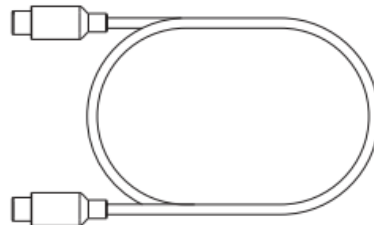
①



②

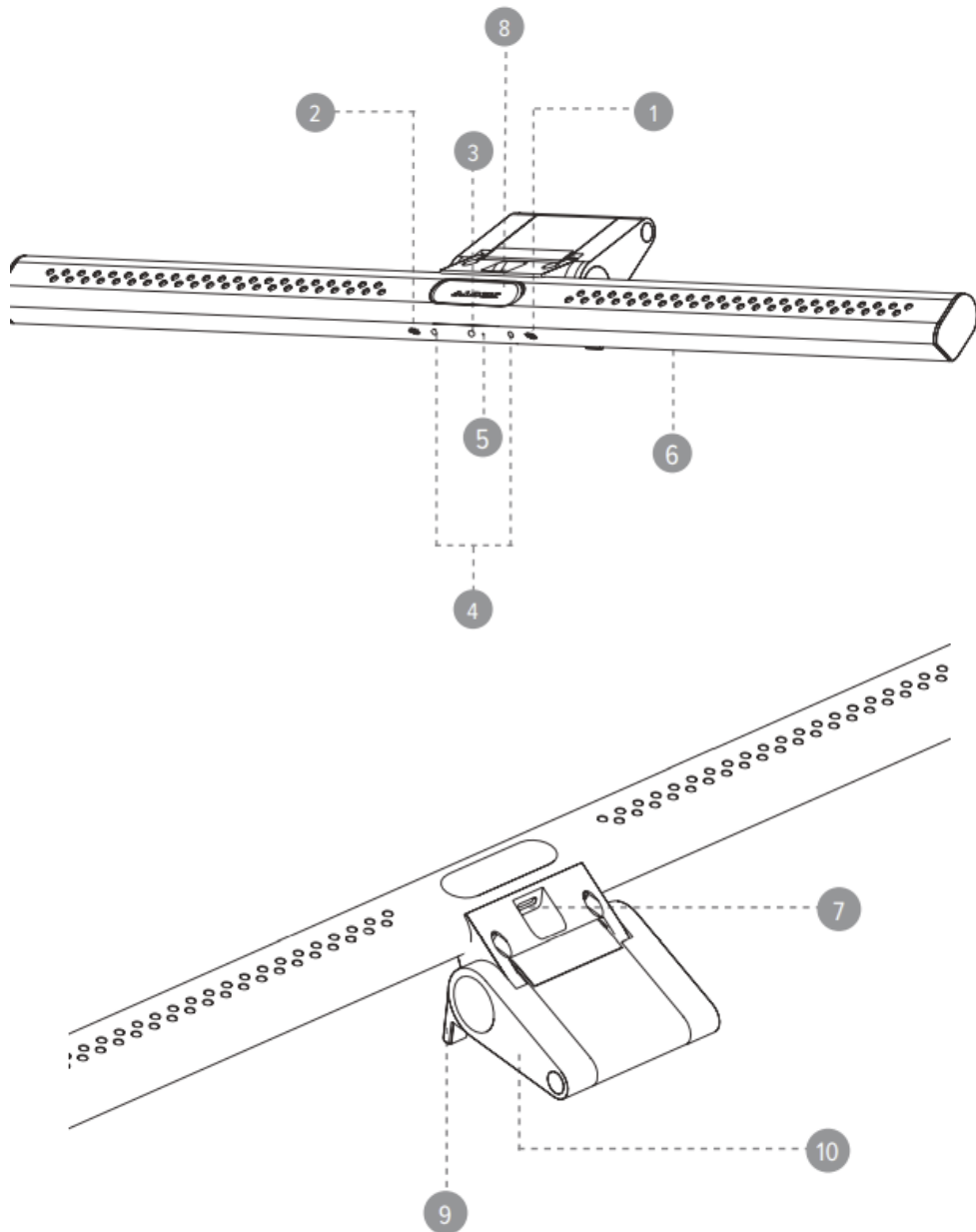


③



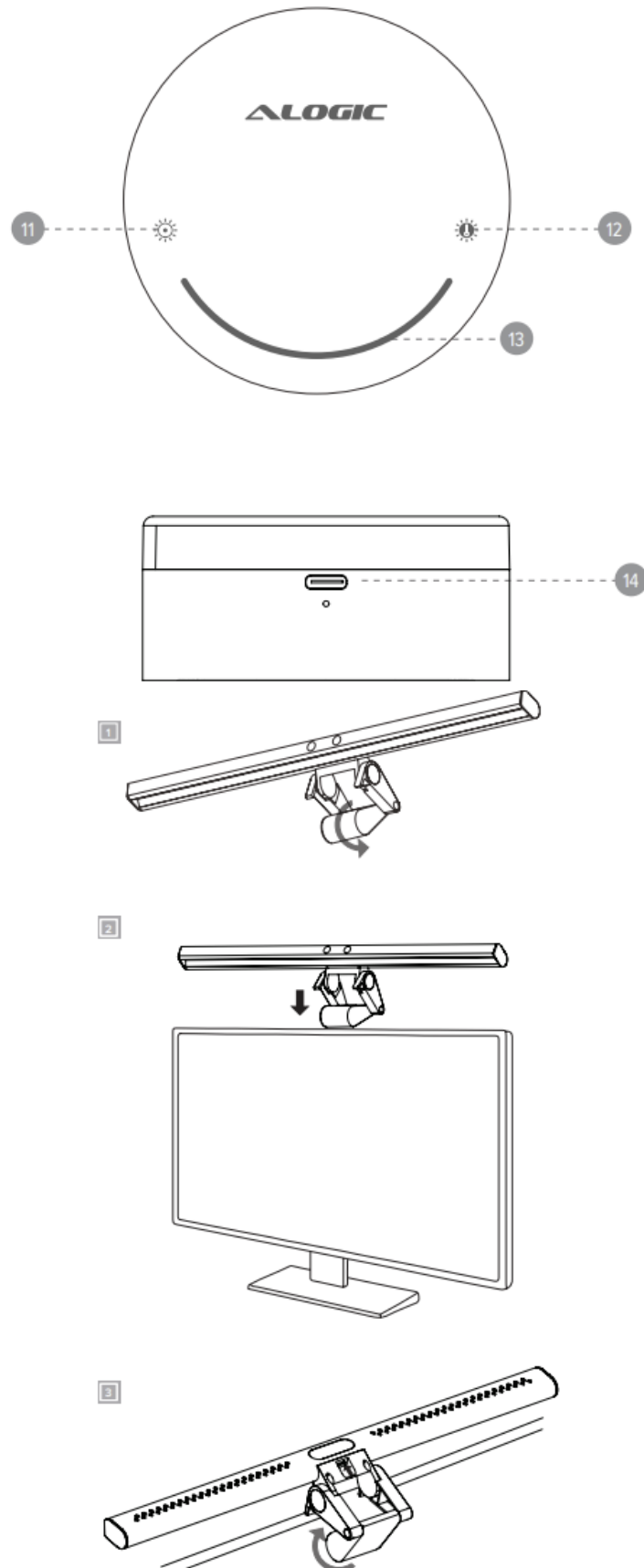
Package Contents

- Illuminate Light Bar
- Remote Control Dial
- USB-C Charging Cable



1. Colour Temperature Button
2. Power & Brightness Button
3. 4K Webcam
4. Microphone
5. Camera Status LED
6. LED Light
7. USB-C Port
8. Magnetic Privacy Cover
9. Support Feet
10. Clamp
11. Power Button

- 12. Mode Switch Button
- 13. Adjustment BAR
- 14. USB-C Charging Port



Light Bar Set Up

1. Open the Light Bar's clamp 10 to allow for fitment over your monitor.
2. Position Illuminate's Support Feet 9 at the front of your screen and fold the Clamp 5 towards the monitor until the Light Bar is stable. Illuminate supports screens 8-30mm thick.
3. Connect the Light Bar's USB-C Port 7 to your monitor's USB accessory ports (with at least 5W power output) or your laptop.
4. Tap the Power Button 2 to switch the light on or off.

Adjusting the Light

1. To adjust the brightness, tap and hold the Power/Brightness Button.
2. To change the colour temperature of the light, tap the Colour Temperature Button 1.
3. Press to adjust colour temperature between fixed levels 2800k, 4500k, 6and 500k.
4. Press & hold to ramp colour temperature up/down.

Using the Remote Control Dial

1. Connect the Remote Dial's USB-C Input 14 to a USB power source to charge it.
2. Tap and hold the Power Button 11 and Mode Button 12 for a second to turn the dial on. The dial will automatically go into standby after 20 seconds of inactivity.
3. Tap the Power Button 11 again to switch the Light Bar on or off.
4. Move your finger across the Adjustment Bar 3 to adjust the Brightness.
5. Tap the Mode Button 12 to switch the dial between colour mode and brightness mode. The Adjustment Bar will now change the LED Light from Cool to Warm.
 - **Note:** Warmer light causes less eye strain in dark environments.

Using the Webcam

1. Once connected to your computer via USB, Illuminate's webcam should be automatically available in any application that requires it.
2. Illuminate will auto-focus on objects within 30 cm- 3 m of the webcam.
3. For privacy, place the Magnetic Privacy Cover 8 on top of the webcam when not in use.
4. The camera status LED will illuminate when the camera is currently in use. Note: Remove protective film over webcam as this may affect image quality.

Troubleshooting

Symptom	Solution
The webcam isn't working.	If Illuminate's webcam "Alogic Illuminate Webcam" does not appear in the list of connected cameras, ensure the USB port you've connected Illuminate to supports USB 2 data.
The Light Bar turns off at max brightness.	This indicates Illuminate is not receiving enough power. Ensure the port can supply at least 5W of power.

FCC Compliance Statement

This device complies with Part 15 of the FCC Rules. Operation is subject to the following two conditions:

1. This device may not cause harmful interference, and
2. This device must accept any interference received, including interference that may cause undesired operation. Changes or modifications not expressly approved by the party responsible for compliance could void the user's authority to operate the equipment.

This equipment has been tested and found to comply with the limits for a Class B digital device, under Part 15 of the FCC Rules. These limits are designed to provide reasonable protection against harmful interference in a residential installation. This equipment generates, uses and can radiate radio frequency energy and, if not installed and used according to the instructions, may cause harmful interference to radio communications. However, there is no guarantee that interference will not occur in a particular installation. If this equipment does cause harmful interference to radio or television reception, which can be determined by turning the equipment on and off, the

user is encouraged to try to correct the interference by one or more of the following measures:

- Reorient or relocate the receiving antenna.
- The separation between the equipment and the receiver.
- Connect the equipment to an outlet on a circuit different from that to which the receiver is connected.
- Consult the dealer or an experienced radio/TV technician for help.

FCC Radiation Exposure Statement

The device has been evaluated to meet general RF exposure requirement. The device can be used in portable exposure condition without restriction.

Contact Information

- ALOGIC USA LLC 3730 Parish Ave
- Fremont, CA 94536 USA

Frequently Asked Questions


Q: How do I charge the Remote Control Dial?

A: Connect the Remote Dial’s USB-C Input to a USB power source for charging.

Q: What is the warranty for this product?

A: The warranty details are provided in the user manual. Please refer to it for more information.

Documents / Resources

	<p>ALOGIC ALCMIL Illuminate Light Bar with 4k Autofocus Camera [pdf] Use r Manual</p> <p>2ATCA-ALCMIL, 2ATCAALCMIL, ALCMIL Illuminate Light Bar with 4k Aut ofocus Camera, ALCMIL, Illuminate Light Bar with 4k Autofocus Camera, Light Bar with 4k Autofocus Camera, Bar with 4k Autofocus Camera, 4k A utofocus Camera, Autofocus Camera, Camera</p>
---	--

References

- [User Manual](#)

■ ALOGIC

◆ 2ATCA-ALCMIL, 2ATCAALCMIL, 4k Autofocus Camera, ALCMIL, ALCMIL Illuminate Light Bar with 4k Autofocus Camera, ALOGIC, Autofocus Camera, Bar with 4k Autofocus Camera, camera, Illuminate Light Bar with 4k Autofocus Camera, Light Bar with 4k Autofocus Camera

Leave a comment

Your email address will not be published. Required fields are marked *

Comment *

Name

Email

Website

☐ Save my name, email, and website in this browser for the next time I comment.

Post Comment

Search:

e.g. whirlpool wrf535swhz

Search

This website is an independent publication and is neither affiliated with nor endorsed by any of the trademark owners. The "Bluetooth®" word mark and logos are registered trademarks owned by Bluetooth SIG, Inc. The "Wi-Fi®" word mark and logos are registered trademarks owned by the Wi-Fi Alliance. Any use of these marks on this website does not imply any affiliation with or endorsement.