


alnor HRQ-BUT-PG15
Wireless 4 Button
Controller



alnor HRQ-BUT-PG15 Wireless 4 Button Controller User Manual

[Home](#) » [alnor](#) » alnor HRQ-BUT-PG15 Wireless 4 Button Controller User Manual 

Contents

- [1 alnor HRQ-BUT-PG15 Wireless 4 Button Controller](#)
- [2 Product Information](#)
- [3 Product Usage Instructions](#)
- [4 Operation of the HRQ-BUT-PG15 panel](#)
- [5 WIFI connection configuration](#)
- [6 HRQ-BUT-PG15 panel mounting](#)
- [7 Documents / Resources](#)
 - [7.1 References](#)
- [8 Related Posts](#)



alnor HRQ-BUT-PG15 Wireless 4 Button Controller



Product Information

Specifications

- Product Model: HRQ-BUT-PG15
- Version: 1023
- Manufacturer: Alnor

Product Usage Instructions

Operation of HRQ-BUT-PG15 Panel

The HRQ-BUT-PG15 panel is a legally protected trademark and technical patent. Any rights to modifications are reserved.

Configuring Connection to WIFI Network

1. Register a user and log in to air.alnor.com.pl website, select "Add Installation" parameter.
2. Press and hold the room panel button for about 4 seconds to activate Bluetooth function.
3. Wait a few seconds for the panel to restart and Bluetooth function to activate (LED button will rapidly flash).
4. Install the dedicated mobile application AlnorServiceAIR.apk and run it on a mobile device with Bluetooth enabled.

Frequently Asked Questions (FAQ)








Q: How long does the initial setup process take?

A: The initial setup process typically takes around 10 seconds. If it takes significantly longer, please check the correct connection of the D+, D- transmission cable.

Operation of the HRQ-BUT-PG15 panel

Basic operation of the controller is performed by touching the selected function button of the HRQ-BUT-PG15 room panel. Button symbols and LED signalling indicate:



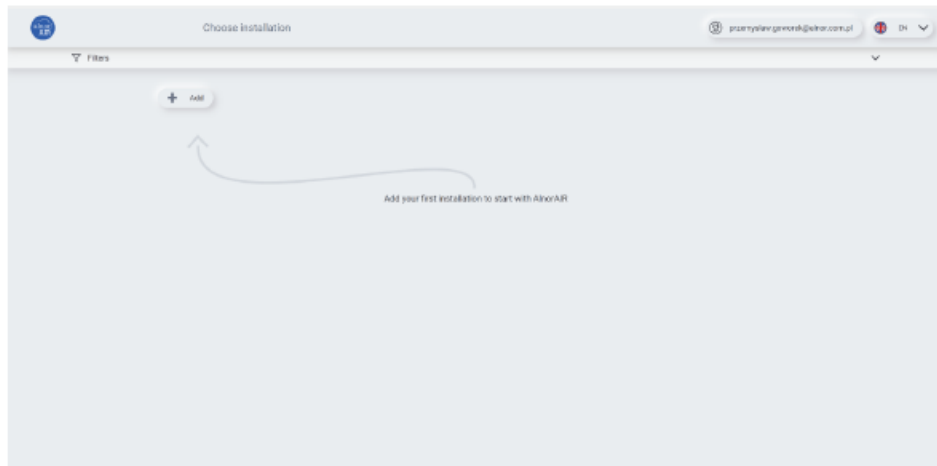
-  signalling indicating that the air handling unit is off (button's LED off) or on (button's LED on for 5 sec). The operation of the switched-on unit is also indicated by LEDs of for example: selected vent gear, automatic mode on, schedule mode, manual mode.
-  switching the air handling unit on (button's LED on) according to the set time schedule. Air handling unit switches to the time schedule mode. If the time schedule is not set or enabled, the button's LED flashes. When the schedule mode is active, the LED for manual mode is turned off, and vice versa.
-  switching the air handling unit on (button's LED on) into automatic operation mode.
-  switching the air handling unit on (button's LED on) into manual operation mode, which enables the setting of the gear.
-  increase or reduce the gear. The function only works when the manual operation mode is on.
-  signalling of active events from the air handling unit.
-  active connection to an internet service or via Bluetooth.

WIFI connection configuration

In order to configure the connection of the HRQ-BUT-PG15 panel to the WIFI network, an Android, iOS device


and internet access are required. To configure the connection to the WIFI network, follow the guidelines below.

1. Register the user, then log on to air.alnor.com.pl and select the “Add installation” parameter .
- 2.



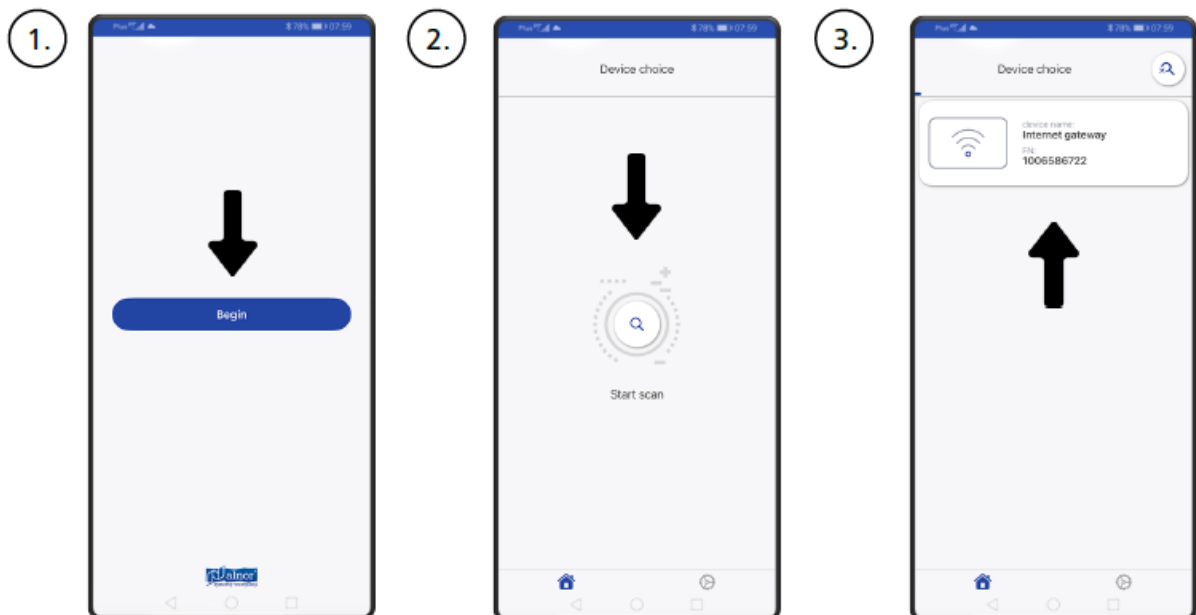
Hold down the button  of the room panel for approx. 4 sec to activate Bluetooth.

3. Wait several seconds until the panel is rebooted and Bluetooth is switched on (the button's LED will flash rapidly).

4. Install the dedicated mobile AlnorServiceAir.apk and run it on the mobile device  together with Bluetooth.

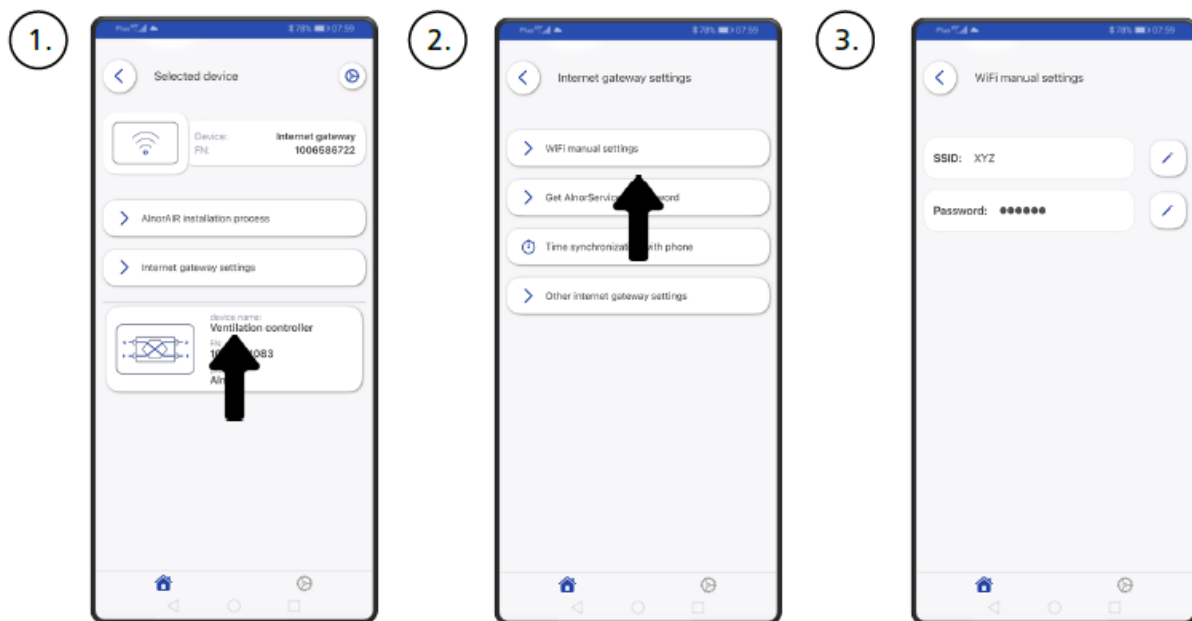


5. In the mobile app, search for the regulator to connect and confirm the connection.

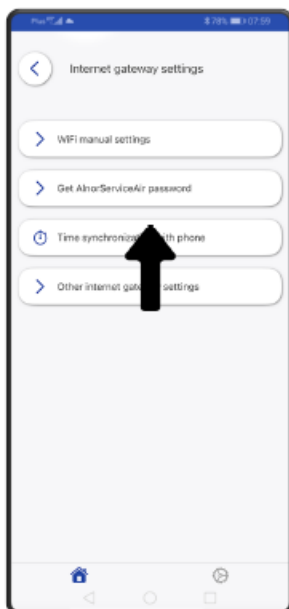


6. Configure the connection to the Wi-Fi network in the Wi-Fi Settings parameter of the mobile application and

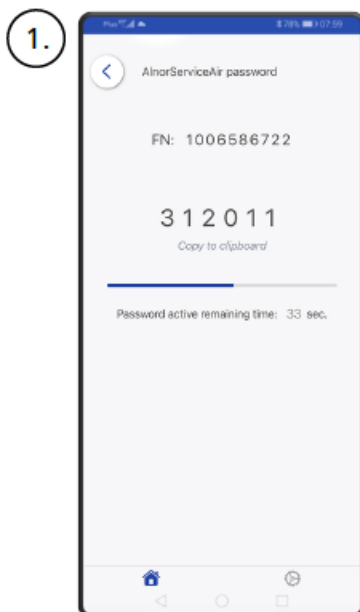
enter the password in the Manual Wi-Fi network settings parameter or use the process by clicking on “Add AlnorServiceAIR installation” (in this case, go to step no. 10).

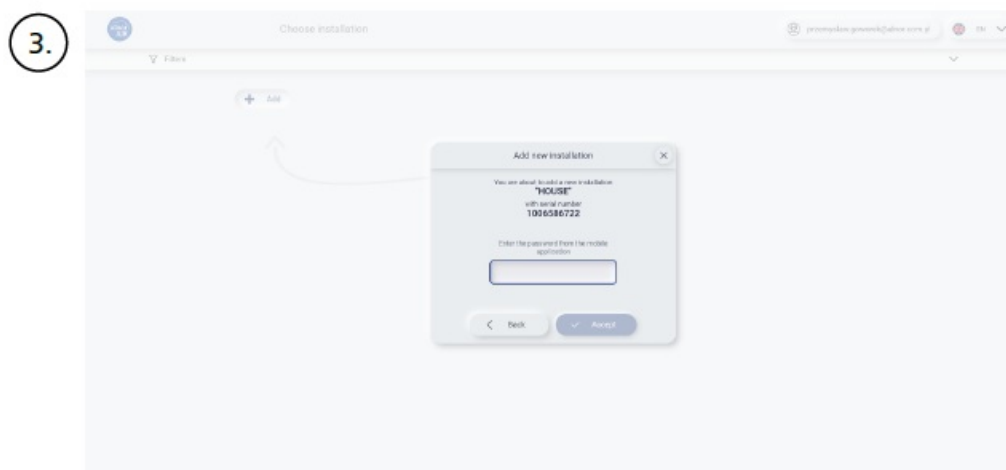
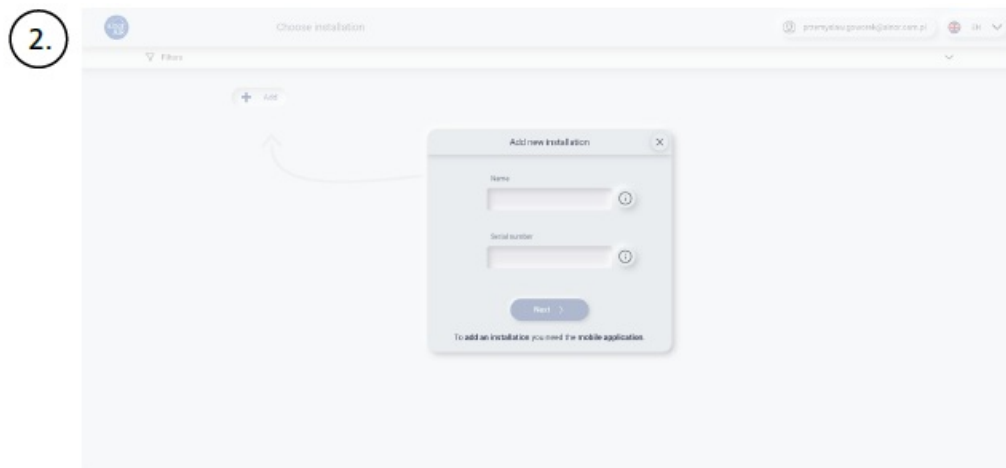


7. You need to generate a token by entering the „Get AlnorServiceAir password” parameter of the application.



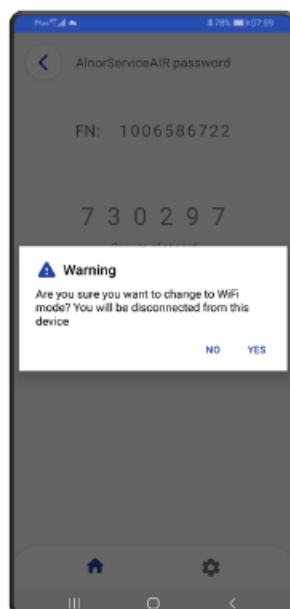
8. Copy the FN code and the generated token to the appropriate windows on AlnorServiceAIR








9. After performing the Wi-Fi configuration

in the mobile app, press the panel button  again for approx. 4 sec.



10. Wait several seconds until the panel restarts and Bluetooth is switched off and the Wi-Fi function is switched on, for which:

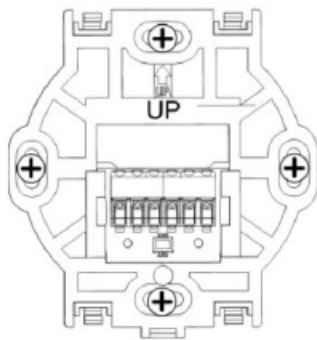
- if the button's  LED is lit constantly, this indicates an active connection to the Wi-Fi network and to the Internet service,

- if the button's  LED is not lit, there is no connection to the Wi-Fi network,
- if the button's  LED flashes (slower than when Bluetooth is active), there is a connection to the Wi-Fi network but no internet service.

11. Re-enter the Add web service installation parameter (the first window will not load) and select the Settings parameter on the left-hand side bar.
12. Press „+“ to add a regulator from the installation (the regulator should already be found). The correct addition of the installation controller will display configuration and operation tabs for the controller on the first page of the website.

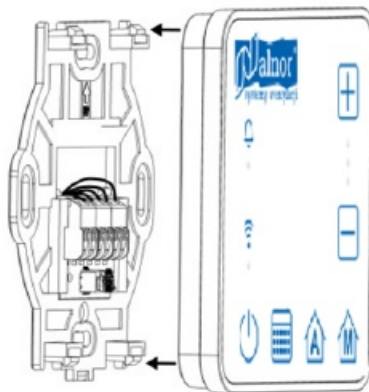
HRQ-BUT-PG15 panel mounting

Detach the mounting frame from the rear housing of the panel. The frame is fixed to the panel housing by snaps. A flat screwdriver can be used to detach the frame. Connect the wires of the transmission cable connecting the panel to the controller to the panel self-clamp. The cable connecting the panel to the controller has to be in the wall.



The cable connecting the panel to the controller cannot be run together with the building's electrical wiring. The cable should also not run close to equipment emitting strong electromagnetic field. Drill holes in the wall and, using screws, fix the mounting frame at the desired place on the wall, keeping it in the correct position (UP).

•




Then fix the panel to the mounting frame using the snaps.

When the controller is powered up, the , , ,  buttons' LEDs will turn on in sequence on the panel, indicating that the software is loading. Loading takes approx. 10 sec. If this time is significantly longer,

check the correct connection of the D+, D- wires of the transmission cable connecting the panel to the controller.

ALNOR® ventilation systems is a legally protected trademark and technical patent. All rights reserved.

Documents / Resources

	<p>alnor HRQ-BUT-PG15 Wireless 4 Button Controller [pdf] User Manual HRQ-BUT-PG15, 1023, HRQ-BUT-PG15 Wireless 4 Button Controller, HRQ-BUT-PG15, Wireless 4 Button Controller, 4 Button Controller, Button Controller, Controller</p>
---	--

References

- air.alnor.com.pl
- [TSI - Alnor](#)
- [User Manual](#)

Manuals+, Privacy Policy

This website is an independent publication and is neither affiliated with nor endorsed by any of the trademark owners. The "Bluetooth®" word mark and logos are registered trademarks owned by Bluetooth SIG, Inc. The "Wi-Fi®" word mark and logos are registered trademarks owned by the Wi-Fi Alliance. Any use of these marks on this website does not imply any affiliation with or endorsement.