



Allsee Technologies ExxUHD1 4K Large Format Display User Manual

[Home](#) » [Allsee Technologies](#) » Allsee Technologies ExxUHD1 4K Large Format Display User Manual 

Contents

- 1 Allsee Technologies ExxUHD1 4K Large Format Display
- 2 Safety Instructions
- 3 Quick Start Guide (connecting to PC)
- 4 Quick Start Guide (Internal Media Player)
- 5 Introduction
 - 5.1 Box Contents
 - 5.2 Product Overview
 - 5.3 Infrared Extender
 - 5.4 Remote Control
 - 5.5 Replacing the Remote Control Battery
- 6 Menu Operation
 - 6.1 Inputs
- 7 Set-Up
 - 7.1 Internal Media Player
- 8 FAQs and Troubleshooting Guide
- 9 Documents / Resources
- 10 Related Posts



Allsee Technologies ExxUHD1 4K Large Format Display



Safety Instructions

- Please keep the display away from any heat sources such as electric radiators or direct sunlight. Place the display in a stable and well-ventilated place.
- Please handle with care so as to not damage the LCD panel.
- The holes or openings on the display are designed for ventilation. Do not cover or block the ventilation holes or openings with any objects.
- Remove protective covering from the screen before you use the display.
- As the display surface is vulnerable to scratches, avoid touching the surface with a sharp pen point.
- Shut off the power supply before cleaning. Use a soft lint-free cloth instead of a tissue to wipe the screen.
- You may use a glass cleaner to clean the product as required. However, never spray the cleaner directly onto the display surface.
- Do not attempt to repair this product yourself! Improperly disassembly of the product may invalidate the warranty and lead to possible danger!

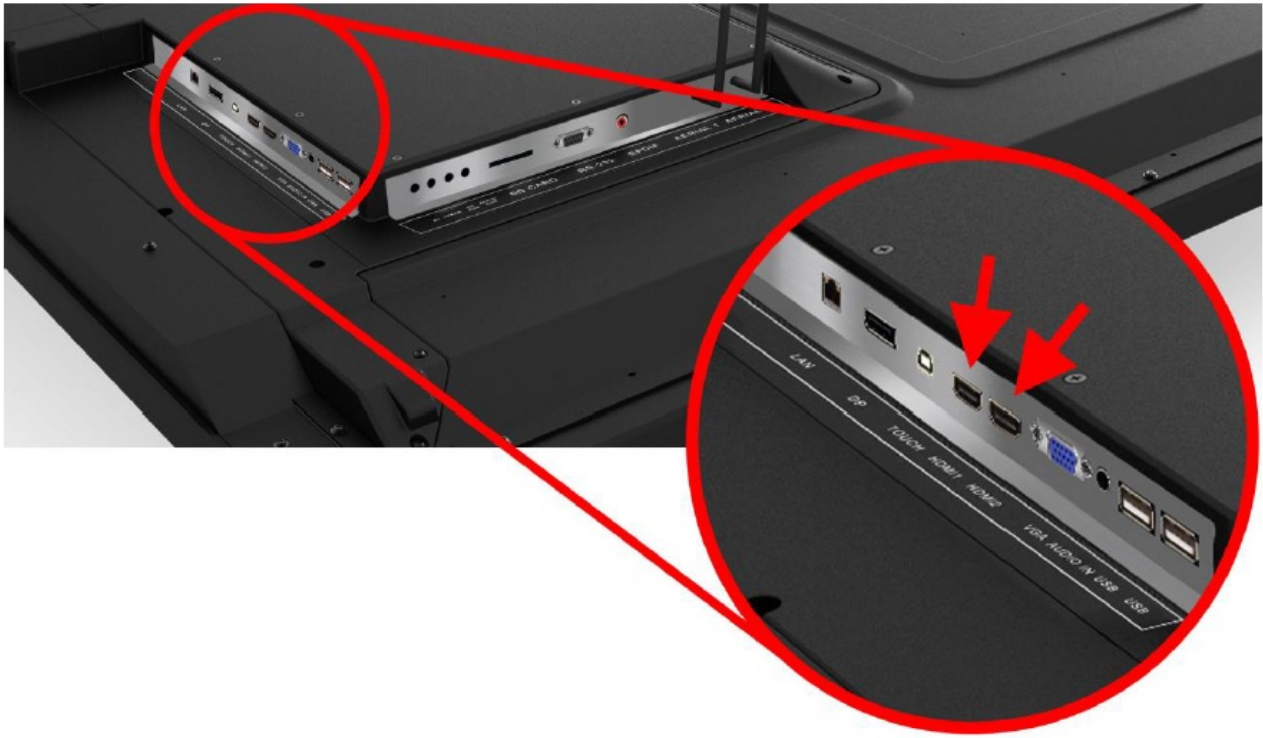
If you have a problem that cannot be solved using the “Troubleshooting” guidelines, please contact your supplier.

Quick Start Guide (connecting to PC)

This section of the guide is to allow rapid set up and use of the unit. Please refer to the main part of the User Guide for full information on the use of the unit.

Please follow the steps detailed below:

1. Unpack unit and place in the desired location along with PC.
2. Connect the screen to the PC via the HDMI Cable (See Figure 1).



3. Power ON the PC.
4. Take the power lead from the accessories bag, insert the lead into the screen and connect to a mains outlet. Then turn ON by the “AC Switch” located next to the power input.
5. If the screen does not display the signal from the PC, then press the “SOURCE” button on the remote control and navigate to “HDMI1” and press “PLAY”.

VGA
HDMI 1
HDMI 2
DP
AV
YPBPR
Media Browser

Quick Start Guide (Internal Media Player)

The monitor has a built-in Android media player that copies content from a USB stick. This allows you to display a series of images and videos in a continuous loop. To use the screens internal media player please take the following steps:

1. Begin by loading your image and video files directly onto the root drive (without any folders) of your USB stick in the order that you want them to be displayed. NOTE: To find out what media formats are supported, see section 3.4.2 Supported Media Files.
2. Next, plug the USB stick into the USB port of the screen (see Figure 2).



3. Your media files will now display in a continuous loop.
4. If they do not begin to play automatically, please press “MENU” then go to the Time submenu and select DMP Setup. Here you can turn on auto play and edit the duration that your images display for.

Introduction

Congratulations on your purchase of our product. Please read carefully and follow all instructions in the manual before first use.

The product should not be exposed to liquids dripping or splashing and no objects filled with liquids, such as vases, should be placed on the product.

For user convenience, a number of operations can be performed through remote control.

Attention:

1. Do not change any default setting when it is unnecessary.
2. Keep the product far away from water during installation and use.

Box Contents

- 1x Professional LED Video Monitor
- 1x Power Cable
- 1x HDMI Cable
- 1x Remote Control (with AAA batteries)
- 1x CD (User Manual)
- 1x Infrared Extender

IMPORTANT: Please retain your screen’s packaging for the duration of your warranty.

Product Overview

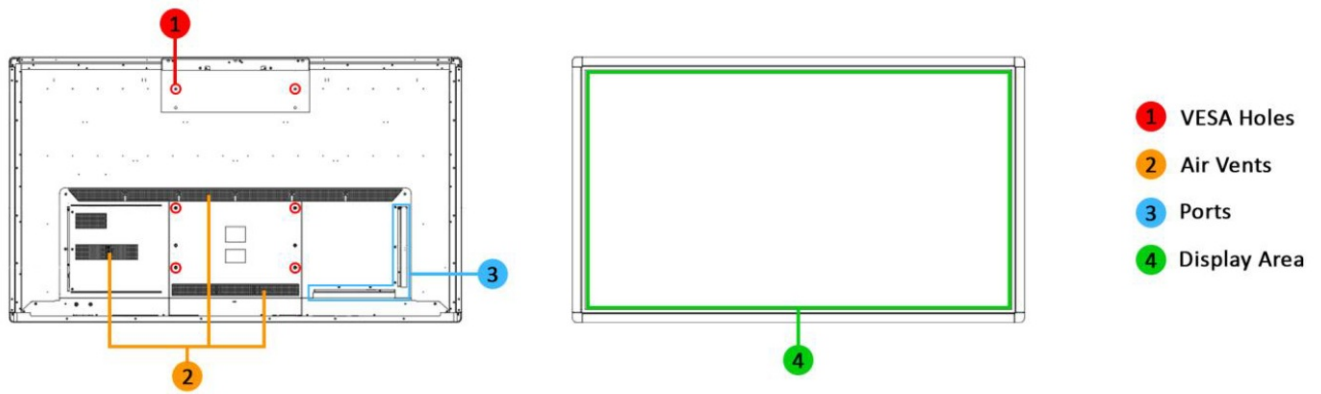
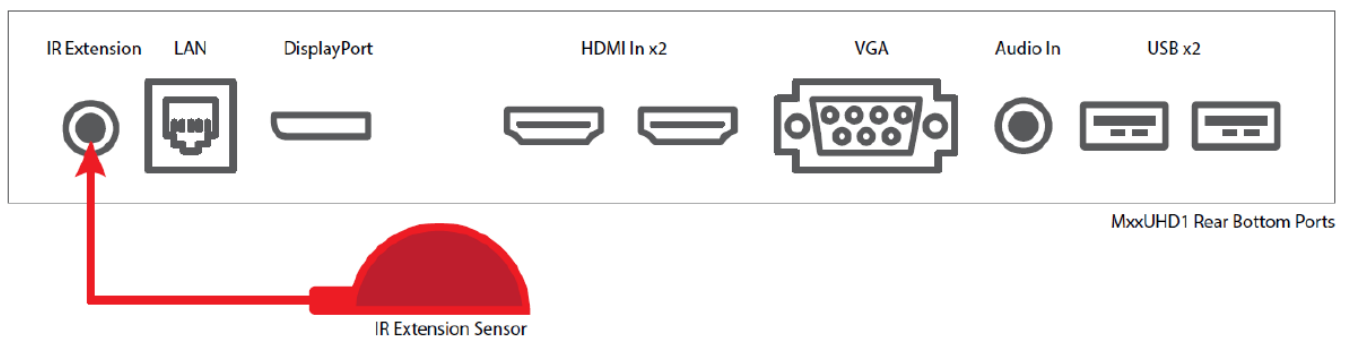


Figure 3 Product Overview

Infrared Extender

Connection to the screen

Before using the Remote control, the infrared extender (with the remote's infrared sensor in it) must be connected to the screen.



Once all required changes have been made, the Infrared Extender can be disconnected or hidden.

Remote Control



Button	Function
POWER/	Power on or off
MENU	Display settings
SETUP	Menu settings
SOURCE/	Input source
	Up (navigation)
	Left (navigation)
	Right (navigation)
	Down (navigation)
	Play media
	Stop media
	Previous
	Next
	Display settings
	Raise volume
	Lower volume

1. Slide the battery cover off, as shown below.
2. Remove the used batteries.
3. Insert the two new AAA batteries with their terminals corresponding to the indicators.
4. Put the cover back on.

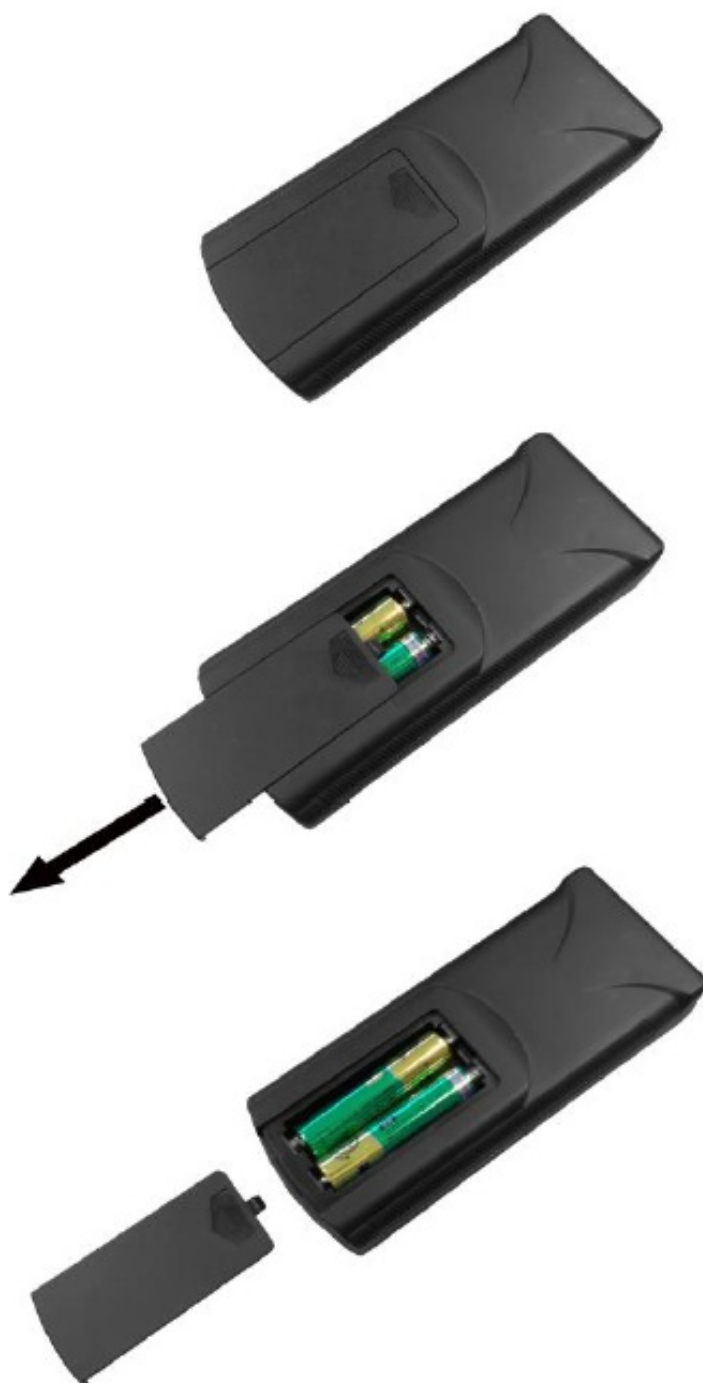


Figure 6 Replacing the Remote Control Batteries

Menu Operation

The Main Menu includes the following sub-menus: Picture, Sound, Time and Option.

Press "MENU" to bring up the menus; press $\leftarrow \rightarrow$ to select the desired menu and $\uparrow \downarrow$ to select the desired item; press "PLAY" to confirm the selection. Press "MENU" at any time to go back or exit.

Picture

Here is where you can edit settings such as brightness, contrast, colour temperature and backlight brightness. Any settings that you change can be reset back to default at any time.

Picture Mode	<Standard>	or Soft/User/Game/Auto/PC/Vivid/Natural/Sports/Lightness	
	User	Contrast Brightness Colour Sharpness Tint	50 50 50 50 50
Colour Temperature	<Medium>	or Warm/User/Cool	
Zoom Mode	<Default>	or Just Scan/14:9/P2P/16:9/4:3/Auto/Panorama Mode	
Image Noise Reduction	<Middle>	or Weak/Strong/Auto/Off	
MPEG Noise Reduction	<Middle>	or Weak/Strong/Off	
xuYCC	<Off>	or On	

Sound

In this menu, you can adjust all of the sound settings for your monitor such as the sound mode EQ settings or the left/right balance. Any settings that you change can be reset back to default at any time.

Sound Mode	<Standard>	or Music/Movie/Sports/User
SPDIF Output	<PCM>	Or Off/Raw/Alone

Setting

Under this menu are settings like on-screen display duration time, and different power settings. You can also restore all of the menus default settings.

Menu Time	<15>	or 5/10/20/30/Always
Board ID	<0>	or 1-63
HDMI EDID Version	<Default>	or EDID 1.4/EDID 2.0
Power Setting		
Power Logo	<Default>	Or Off
Power On Source	<Memory>	Or Android/Digital Signage/HDMI 1/HDMI 2/DP/VGA
Power Volume	<0-100>	
Restore to Default		

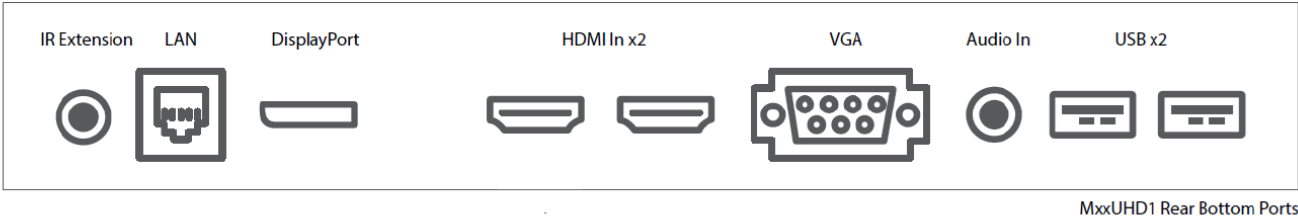
Switching between inputs

One crucial feature that does not appear on the Main Menu is selecting the input source. This is done by first pressing “SOURCE” and then scrolling down to the desired input source and selecting it by pressing “PLAY”.

VGA
HDMI 1
HDMI 2
DP
AV
YPBPR
Media Browser

Inputs

- VGA – Video Graphics Array Signal Input
- HDMI1 – High Definition Multimedia Interface Signal Input
- HDMI2 – High Definition Multimedia Interface Signal Input
- DP – Display Port Signal Input
- YPbPr – Component Signal Input
- RS232 – Serial communication transmission
- USB 3.0 (Media Browser) – Universal Serial Bus (for internal media player)



MxxUHD1 Rear Bottom Ports

Figure 7 Screen Inputs

Set-Up

Ventilation

If you are mounting your monitor in an enclosed space or recessed area, please leave adequate room between the monitor and the enclosure to allow heat to disperse. We recommend the following space for ventilation:

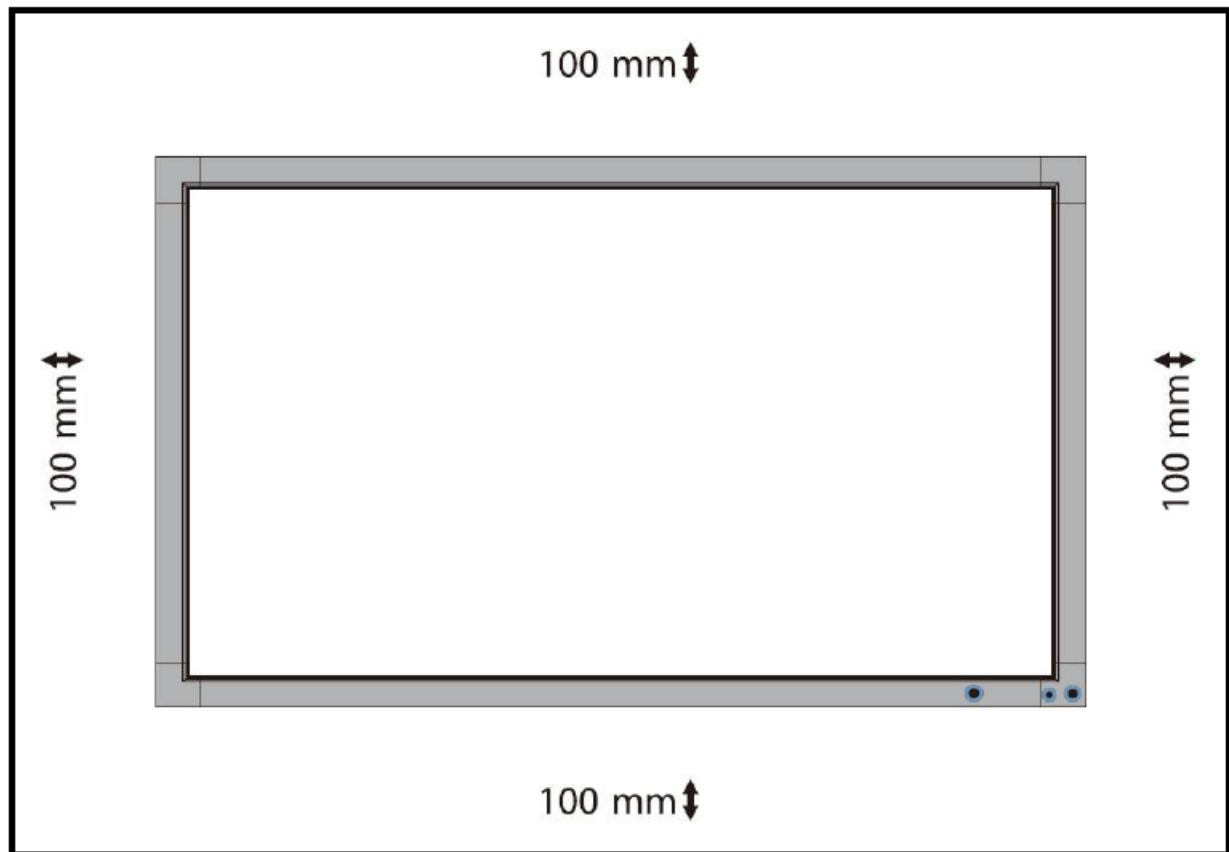


Figure 8 Ventilation Area

If you are using your monitor as part of a video wall or you are mounting them next to one another, please compensate for this by allowing more ventilation area at the rear of the screens.

Connecting to PC

The Large Format Display must be connected to the PC via a visual signal input. The recommended visual connection is via a HDMI Cable, meaning that the display acts as a monitor for the PC – displaying whatever content is on the PC.

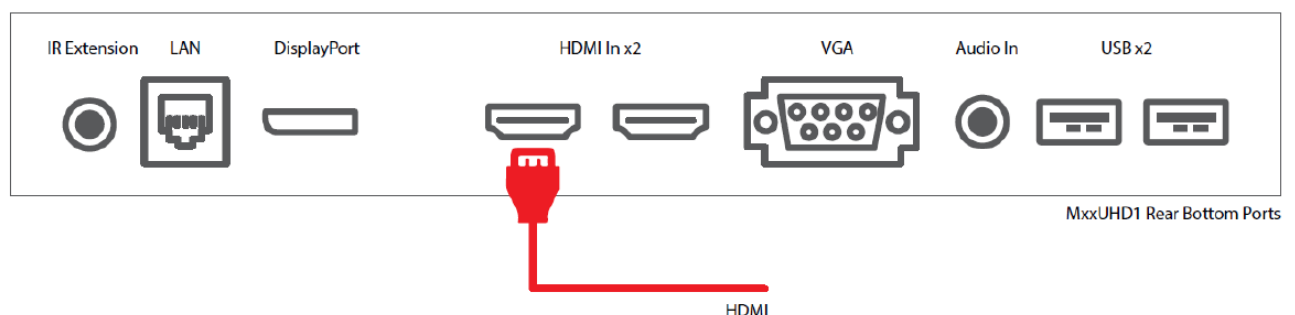


Figure 9 Screen to PC Connections

Connect the screen to the PC via the HDMI cable (as shown above). Once this connection has been made and the PC is powered ON take the power lead and insert it into the screen and connect to a mains outlet. Then turn ON by the “AC Switch” located next to the power input.

Before taking any more steps, ensure that the screen is sourcing its display from the PC. This is done by first

pressing “SOURCE” and then navigating to the desired input source (HDMI1) and select by pressing “PLAY”.

VGA
HDMI 1
HDMI 2
DP
AV
YPBPR
Media Browser

If you wish to display a 4K signal, please use the HDMI2 input, as shown below:

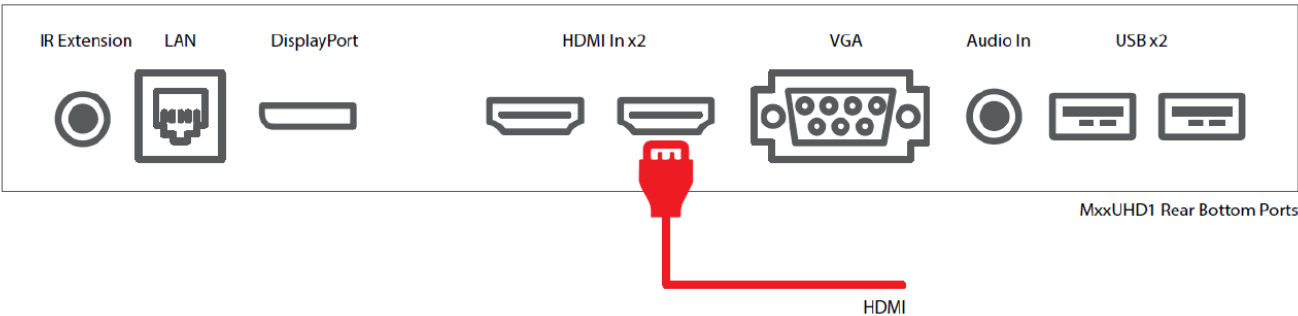
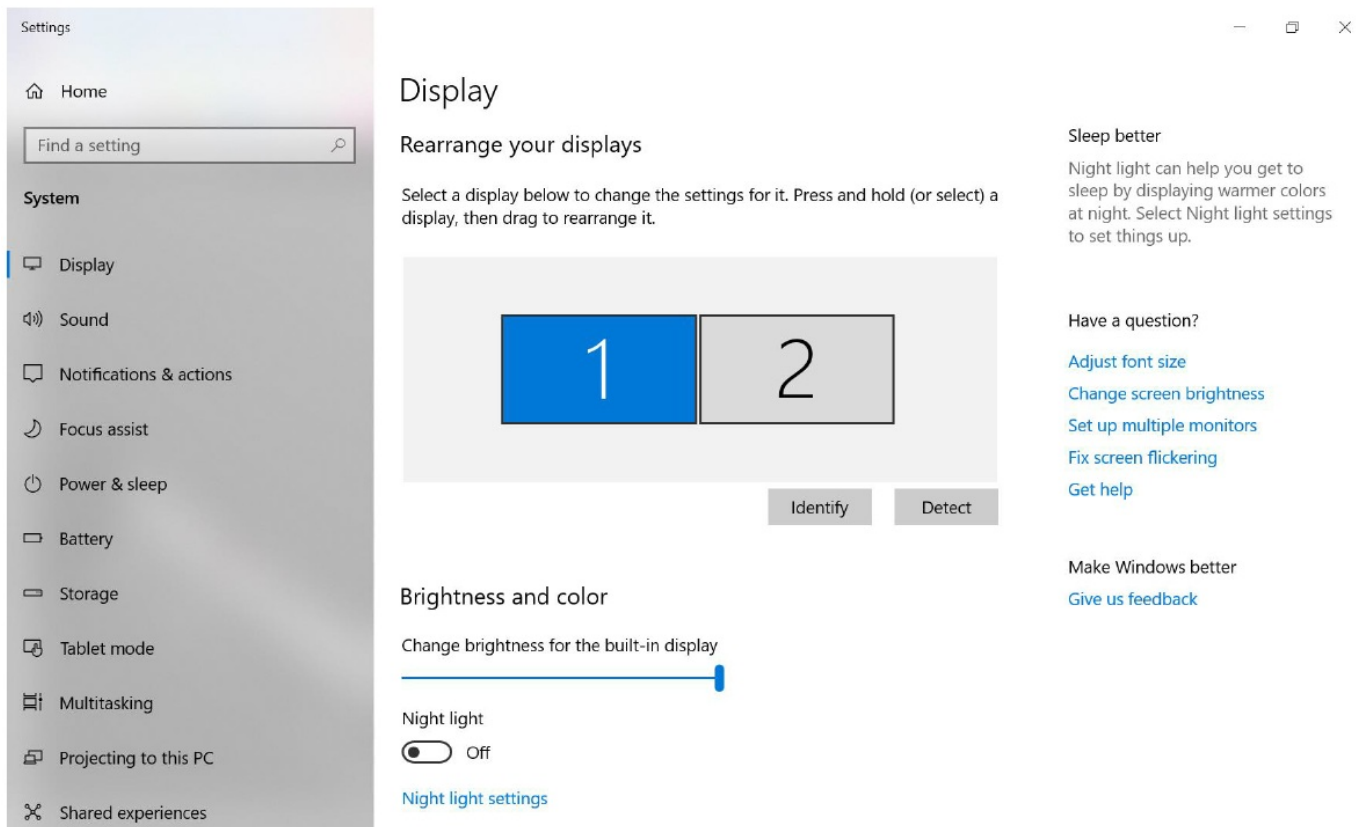


Figure 10 Screen to PC Connections for Displaying 4K Signal

IMPORTANT: If the Video Monitor is the only monitor connected to your PC DO NOT take the following step. Only proceed with the following if you are using a laptop or another monitor is connected to your PC.

Access the display options from your Control Panel or right-click on your Desktop and choose “Properties” (then “Settings”) or “Screen resolution”. You should now click “Detect” to allow the PC to discover the Video Monitor then “Identify” to establish which display is the Video Monitor.



Select the display that corresponds with the Video Monitor display then check the box “Make this my main display” or “Use this device as the primary monitor”. This will make the Video Monitor display your main monitor.

Internal Media Player

Usage

The monitor has a simple built-in media player that runs directly from a USB stick. This allows you to display a series of images and videos in a continuous loop.

Begin by loading your image and video files directly onto the root drive of your USB stick (without any folders) in the order that you want them to be displayed. To find out what media formats are supported, see section 3.4.2 Supported Media Files. Next, plug the USB stick into the USB port of the screen (see Figure 11).



Figure 11 USB Port Location

Your media files will now display in a continuous loop. To change image duration time, please see the Time section of the Main Menu.

Supported Media Formats

Media Type	Supported File Type	
Image	JPEG	Baseline
Video	MPG, AVI, MP4	MPEG-1, MPEG-2, MPEG-4, Xvid, DivX, H264

1. This unit does NOT support WMV or FLV video file types.
2. This unit does NOT support Sony ATRAC3, DTS or Dolby HD audio file types.

Note: Video and image files should be a maximum 1920×1080 resolution (16:9 aspect ratio).

FAQs and Troubleshooting Guide

My Video Monitor is not displaying what is on my PC

Input Source

Your monitor may be sourcing its display from another input. First, ensure that your screen is connected to your PC (or another video source) via one of the inputs. Next, press “SOURCE” and then navigate to the input source that corresponds with the one you are using and select by pressing “PLAY”.

VGA
HDMI 1
HDMI 2
DP
AV
YPBPR
Media Browser

Display/monitor button on the PC keyboard

If you are sourcing your video signal from a PC, your keyboard may have a display/monitor button on it, especially if you are using a laptop. If your Video Monitor does not display the content of the PC, try hitting this button before contacting your supplier.

My display goes into standby mode

Power saving function

If your Video Monitor is powered ON without being connected to a PC via a visual signal (e.g. VGA, DVI, etc.), it will automatically go into standby mode within a few minutes. If your Video Monitor is not being supplied with a video signal, it will go to standby to ensure that video signal connection is connected properly. Also, you must ensure that the Video Monitor is accessing the correct input. To do this you must press "SOURCE" and then navigate to the input source that corresponds with the one you are using and select by pressing "PLAY".

VGA
HDMI 1
HDMI 2
DP
AV
YPBPR
Media Browser

What are my monitor's refresh rates?

If you are running your signal from your PC, then some video cards with a pixel clock over 162MHz may not display the image correctly. Normally however your monitor will display the image correctly by adjusting the factory preset timing signal automatically.


Resolution	Scanning frequency	
	Horizontal	Vertical
680 x 480	31.5 kHz	60 Hz
800 x 600	37.9 kHz	60 Hz
1024 x 768	48.4 kHz	60 Hz
1280 x 768	48 kHz	60 Hz
1360 x 768	48 kHz	60 Hz
1280 x 1024	64 kHz	60 Hz
1600 x 1200	75 kHz	60 Hz
1920 x 1080	67.5 kHz	60 Hz

IMPORTANT: If you are using with a Macintosh PowerBook, set “Mirroring” to Off on your PowerBook. Refer to your Macintosh’s owner’s manual for more information about your computer’s video output requirements and any special identification or configuration your monitor’s image and monitor may require.

My monitor’s image is unstable, unfocused or swimming

Firstly, check that the video signal cable should be firmly connected to the monitor and the PC. Next, check the monitor and your display card with respect to compatibility and recommended signal timings. If your text is blurred, reformat the video mode to “non-interlaced” and use 60Hz refresh rate.

Documents / Resources

	<p>Allsee Technologies ExxUHD1 4K Large Format Display [pdf] User Manual ExxUHD1 4K Large Format Display, ExxUHD1, 4K Large Format Display, Large Format Display , Format Display</p>
---	---