

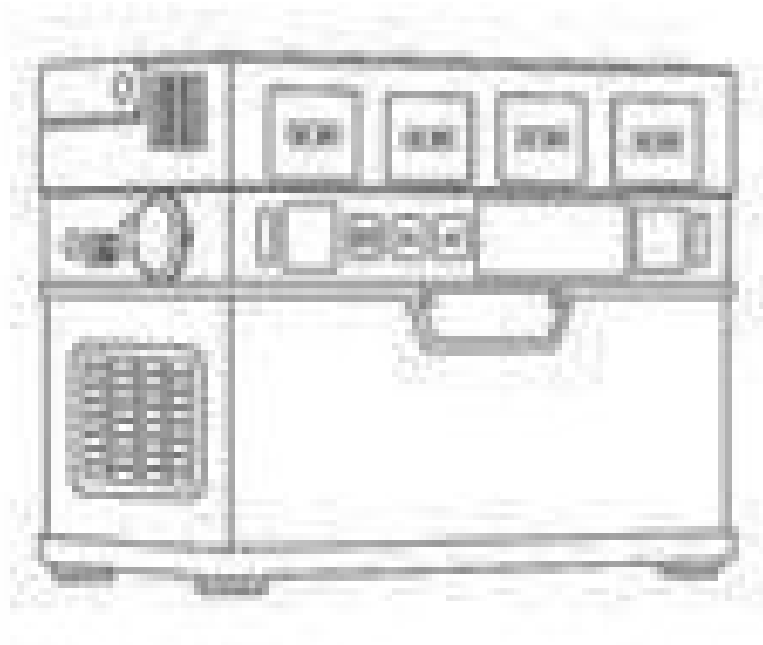


ALLPOWERS AP-SS-008 Portable Power Station User Manual

[Home](#) » [ALLPOWERS](#) » ALLPOWERS AP-SS-008 Portable Power Station User Manual 



Portable Power Station
Model: AP-SS-008



The products and materials described in this manual will be changed due to technical upgrades, we reserve the right to change the contents of this manual without prior notice.

Congratulation on your solar generator purchase, a plug-and-play backup power integrates with solar regulation. storable energy system and cloudbased parental controls (Bluetooth app allows you to monitor solar charging at your figure-tips). With 1092 watt-hours of power. you can keep your laptops. lights. AC/DC appliances running

longer.



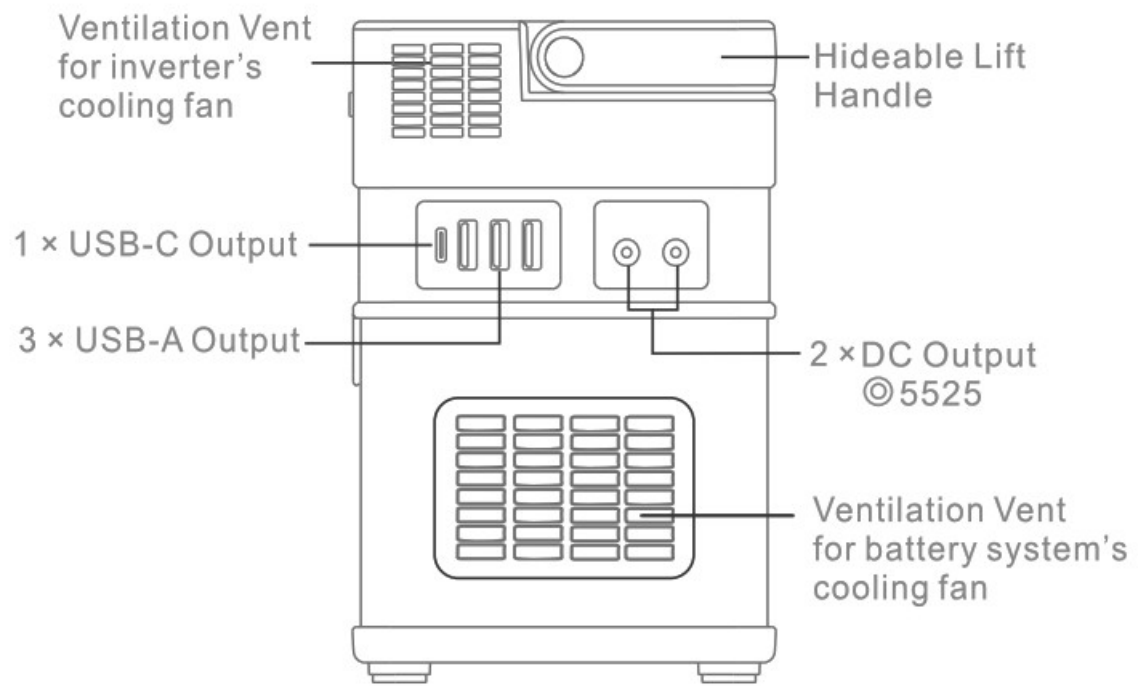
Precautions before operating:

1. First, you need to ensure the power level of this generator is not too low before taking it out. It is capable of charging and discharging at the same time, but solar charging is affected a lot by weather.
2. Lion-batteries cycle life can extend a lot with proper handling and usage. The most important note: You need to use it at room temperature: -10 – +40(t)/14-104(°F) Do make sure to avoid damp environments and do not store outside.
3. Be sure the rated running power of your device s1500Wand the peak power < 3000W. In some cases. the instantaneous power of particular appliances are 3 times higher than their rated running power.
4. It is normal for this unit to become warm during charging/discharging. Please use it in a cool and well-ventilated place. (Keep it clear from naked flames. sparks or conductive materials when charging the battery).
5. Voltage and frequency from AC source might vary from country to country (CN 220V / JP 100V / US 110V / UK&EU 230V / AU 240V). Please follow the local regulations to choose the correct version before using.

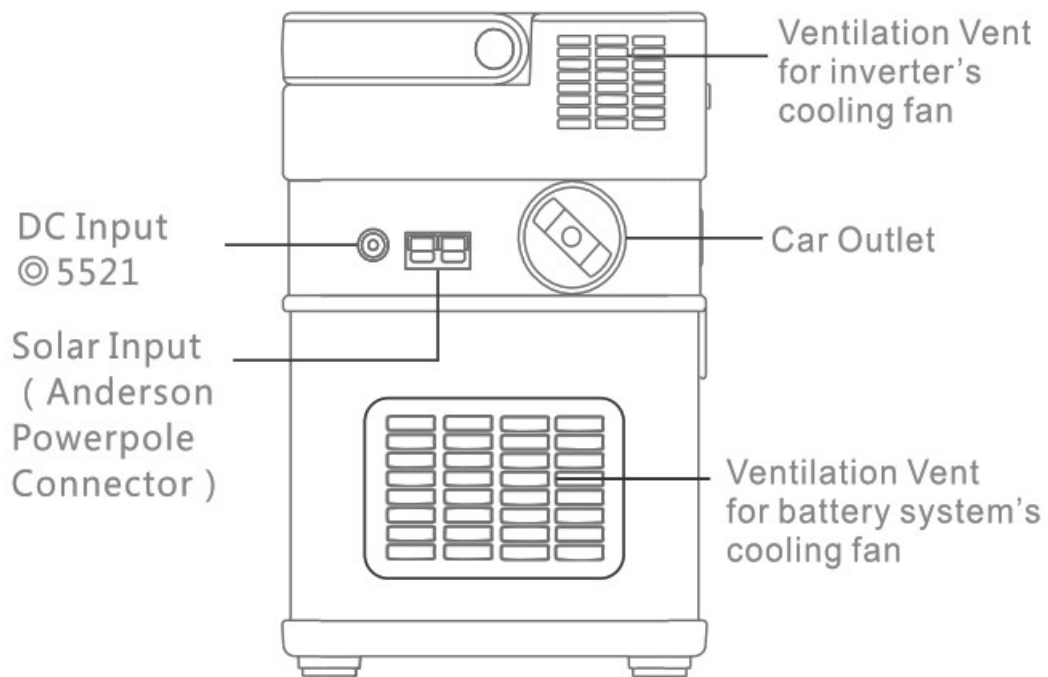
Contents

- [1 Get To Know Your Generator](#)
- [2 APP](#)
- [3 What's Included](#)
- [4 Optional](#)
- [5 Charging your Solar Generator](#)
- [6 Using Your Solar Generator to Power Devices](#)
- [7 Specifications](#)
- [8 Documents / Resources](#)
- [9 Related Posts](#)

Get To Know Your Generator

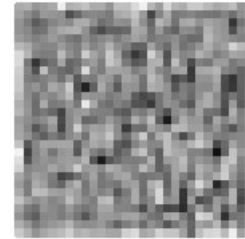
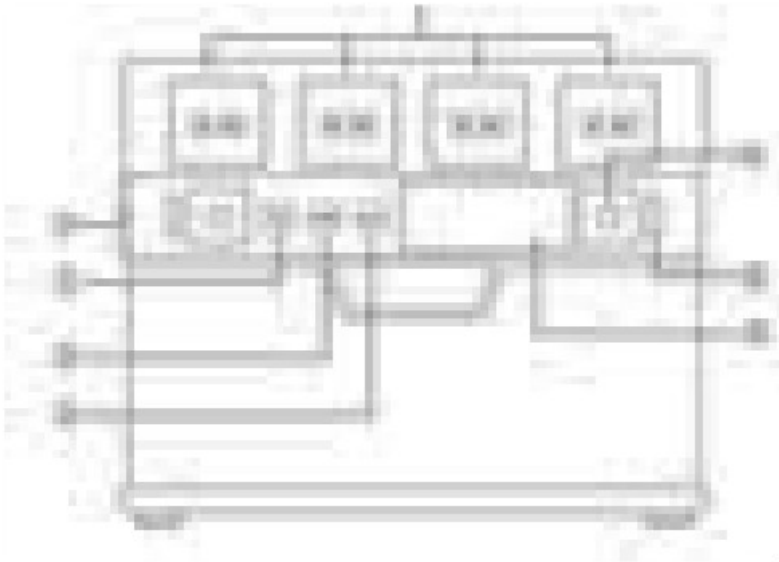


Right

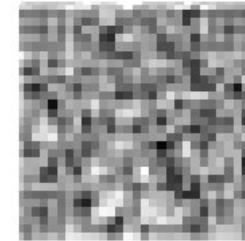


Left

4 × AC Universal Output




Android



iOS

App supports iOS 9.0 or above
/Android 4.3 or above.

1. **Power Button:** short press to power it ON/OFF and check the remaining battery. When it is ON, press and hold the pressing for 3 seconds until you see icon “” on LCD. you will enter/exit **Bluetooth Mode**. scan QR code to download our APP and do the registration. you can operate it with your Phone via Bluetooth from now on.
2. **Turn On / Off DC Output**
Click on DC button to turn on / off the USB-A / USB-C DC5525 output and you will see both USB and DC icons light up on LCD.
3. **Turn On Off AC Output**
To turn on / off the AC outlets, we need to press and hold the pressing for 3-5 seconds until you find the AC icon appears. (When AC mode is switched on, a cooling fan will run for a second).
4. **LED lamp x 2**
5. **Switch for LED Lamps (Right and Left)**
6. **Real-Time LCD Display**
7. **Car Outlet**

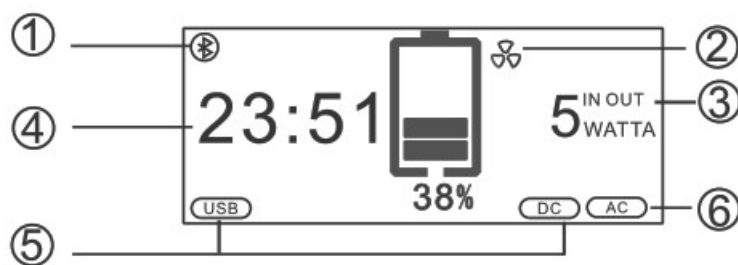
APP

The picture of connected device will be displayed



	Turn on Bluetooth on your phone and make sure Location Services is on.
	Short press to light up the LCD display then press and hold 3 seconds to enter Bluetooth mode.
	Open the APP, in the "Select Your Device" interface, select ALLPOWERS S1500 to make a pair

Real-time LCD Display

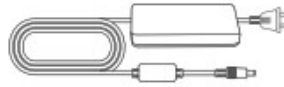


1. Bluetooth Icon: Normally, the effective range for Bluetooth is 5-10M, but effective range will be affected by surrounding obstacles.
2. Cooling Fan: it'll start when the temperature of system go high and turn off once the system cool down.
3. In/Out Power Balance © Time to Empty Battery: 23:51=23 hours 51 minutes, the calculation is based on the current out power balance.
4. USB/DC Output Icon: USB and DC icons are active once DC output is switched on and if overloaded, the DC icon will be flashing as warning.
5. AC Output Icon: AC icon shows up on LCD when AC mode is on. If overloaded, the AC icon will be flashing as warning.

What's Included



Generator



AC Adaptor



Manual

Optional



Solar Charging Cable
(Car Port to DC5521)



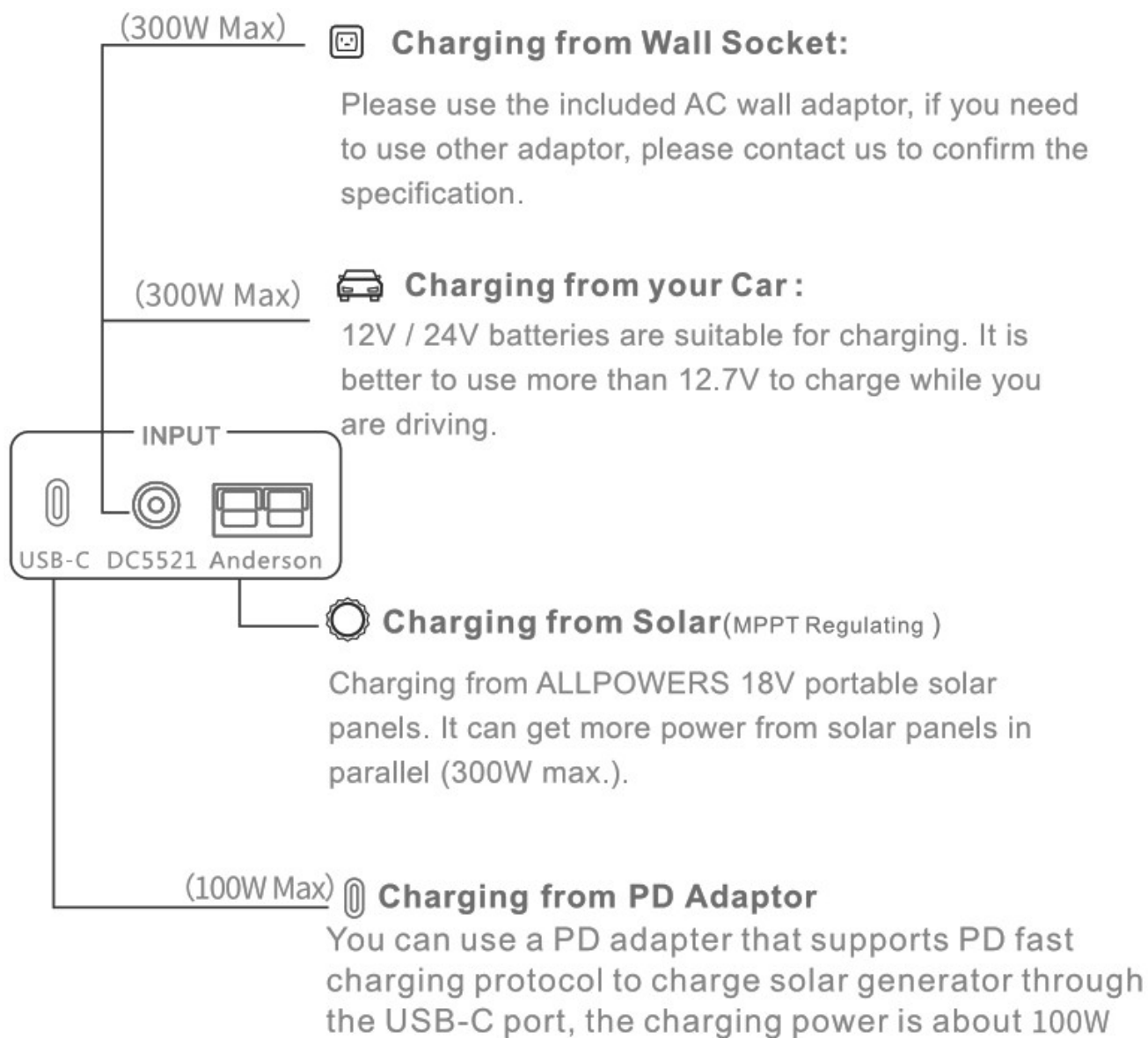
Solar Charging Cable
(MC4 to anderson)



Car Charging Cable
(Car Port to DC5521)

They can be purchased from our authorized online stores or email us for help.

Charging your Solar Generator



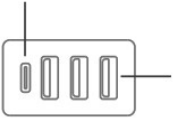
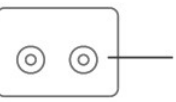
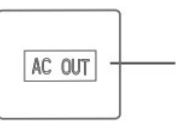
Fully Charged Reference Time

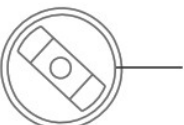
(Only for information, take practicality as standard)

Charging method	Estimated charging time
AC wall charger (300W input)	about 3-4 hours
12/24V car port (max 300W input)	about 3-4 hours
USB-C PD charger (max 100W input)	about 9-10 hours
AC wall charger+ USB-C charger (max 400W input)	about 2-3 hours
Solar panel (max 300W input)	about 3-4 hours

Using Your Solar Generator to Power Devices

1 x USB-C: Bi-directional fast charging port support 100W max.

	3 x USB-A: for smart phones, portable banks, small USB fans, other USB-Powered devices.
	2 x DC: for LED light strips CCTV system security camera or other 12V devices (single port supply no more than 13V)
	4 x pure sine wave AC: for AC appliances (rated running power 1500W. 3000W surge).

	Car Socket: Car Onboard Fridges, 13V appliances, etc. Car socket is built with short-circuit protection, but they should be protected with the rubber plug when not in use.
---	--

1. Check compatibility

Before use, you need to check whether the rated working voltage of your electrical appliance and load matches the output voltage. When using AC output, you need to check whether there is an overload risk. (You can use AC (alternating current) and DC (direct current) output modes at the same time. Note: the total output power cannot exceed 1500W+ 15W. When the total output power is greater than 1500W+15W, the control system will turn off the AC output and keep the DC working. After replacing a suitable device, the interval should be at least 60 seconds to restart AC output mode).

2. Make sure generator is switched on.

The total output watts will be showed on the LCD screen when all the USB, DC, AC ports are activated. (Note: DC car port is always alive, other outputs need to be activated by button)

3. Turn off generator again to stop outputing

To prevent energy loss, each time when outputting is finished, press on master button again to turn off outputing and disconnect the load from the unit. (especially for AC modes, press and hold for 3 seconds to exit outputing.)

4. Keep the remaining power above 10%

In order to extend the generator battery life, please ensure the battery never drop below 10% for AC and 5% for DC output (recommended to always leave at least 20% capacity unused). Also if you do not use it for a long time, it is better to charge it fully at least every 90 days.

Application Reference time



5W

185-218recharges



60W

15-18recharges



40W

23-27 hours



10W

92 -109 recharges



30W

30-36 hours



50W

18-21 hours



10W

92-109 hours



120W

7-9 hours

Specifications

Batteries capacity	295200mAh 3.7V(1092Wh)
Size/Weight	32x22x19cm/12.6x8.7x7.5inch Net Weight: 10KG Gross Weight:11.85KG
In(cigar lighter not included)	12-65V 300W Max
In(Solar, MPPT)	12-65V 300W Max
In(AC)	100V-240V 300W Max (Pure Sine Wave)
In (USB-C)	5V/9V/12V/15V/20V 5A
Out(AC)	4 X US 110V / JP 100V 1500W or EU/UK 230V 1500W (Surge power 3000W)
Out(DC)	DC: 13V5.5A(5.5 X2.5mm) X2 Car Port : 13V10.5A USB1: 5V2.4A USB2: 5V2.4A USB3: 5V2.4A USB-C: 5V/9V/12V/15V/20V 5A(100W max)
Temperature	Working temperature: -10- +40(°C)/14-104(°F) Temperature over-charging protection: 55°C – 65(°C)/131-149(°F) Temperature over-discharging protection: 65°C – 75(°C)/149-167(°F) Cold temperature protection: -20°C – -10(°C)/-4-14(*F) Storage temperature: Within 1 month: -20-60(°C)/-4-140(°F) Within 3 months : -20-45(°C)/-4-113(°F) Within 12 months: -20-25(°C)/-4-77(°F) For long-term storage, please do avoid storing outside, or in humid environments.
Protections	Over-current/Under-voltage /Over-voltage /Over-load /Short-circuit /Over-heating protection



1. Can use the generator while it is recharging? Yes, it is capable of outputting power while charging.

2. How often to recharge the generator when it is not in use?

We recommend to charge it at least once every 90 days to remain its lifetime.

3. What size of solar panel in Watts will be the best panel to charge this generator ?

ALLPOWERS 18V 100W/ 140W/ 200W portable solar panels. can get more power from solar panels in parallel (300W max.).

4. Can i boarding with this generator when traveling?

No, the generator can only be shipped by freight or trucking.

5. How do i know if my multiple devices will work with this unit or not? Will it damage my devices if overloaded?

First, you should check the total power of all your devices and make sure the total running wattage does not exceed the 1500W+15W limits. Even if overloaded, it will be disabled to AC output and keep the DC port running normally.



Contact Us

If you have any concern regarding our products or services, please email us to support@allpowers.com , we will feedback with our assistance within 1 working day. Please also advise us by providing a statement of how the failure occurred and the details of the issue.

Website: allpowers.com

FCC Warning

This device complies with part 15 of the FCC Rules. Operation is subject to the following two conditions: (1) This device may not cause harmful interference, and (2) this device must accept any interference received, including interference that may cause undesired operation.



Any changes or modifications not expressly approved by the party responsible for compliance could void the user's authority to operate the equipment.

Note: This equipment has been tested and found to comply with the limits for a Class B digital device, pursuant to part 15 of the FCC Rules. These limits are designed to provide reasonable protection against harmful interference in a residential installation. This equipment generates uses and can radiate radio frequency energy and, if not installed and used in accordance with the instructions, may cause harmful interference to radio communications. However, there is no guarantee that interference will not occur in a particular installation. If this equipment does cause harmful interference to radio or television reception, which can be determined by turning the equipment off and on, the user is encouraged to try to correct the interference by one or more of the following measures:

- Reorient or relocate the receiving antenna.
- Increase the separation between the equipment and receiver.
- Connect the equipment into an outlet on a circuit different from that to which the receiver is connected.
- Consult the dealer or an experienced radio/TV technician for help.

The device has been evaluated to meet general RF exposure requirement. The device can be used in portable exposure conditions without restriction.

Documents / Resources

	<p>ALLPOWERS AP-SS-008 Portable Power Station [pdf] User Manual</p> <p>AP-SS-008, APSS008, 2A4PQ-AP-SS-008, 2A4PQAPSS008, AP-SS-008 Portable Power Station, AP-SS-008, Portable Power Station</p>
	<p>ALLPOWERS AP-SS-008 Portable Power Station [pdf] User Manual</p> <p>AP-SS-008, Portable Power Station, AP-SS-008 Portable Power Station, Power Station, 1500W Portable Power Bank</p>