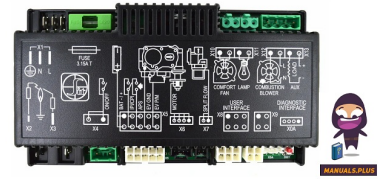


**Allparts Equipment &
Accessories Inc.**
Board
Programming
To Remote
Transmitte



AllParts Board Programming To Remote Transmitter Instructions

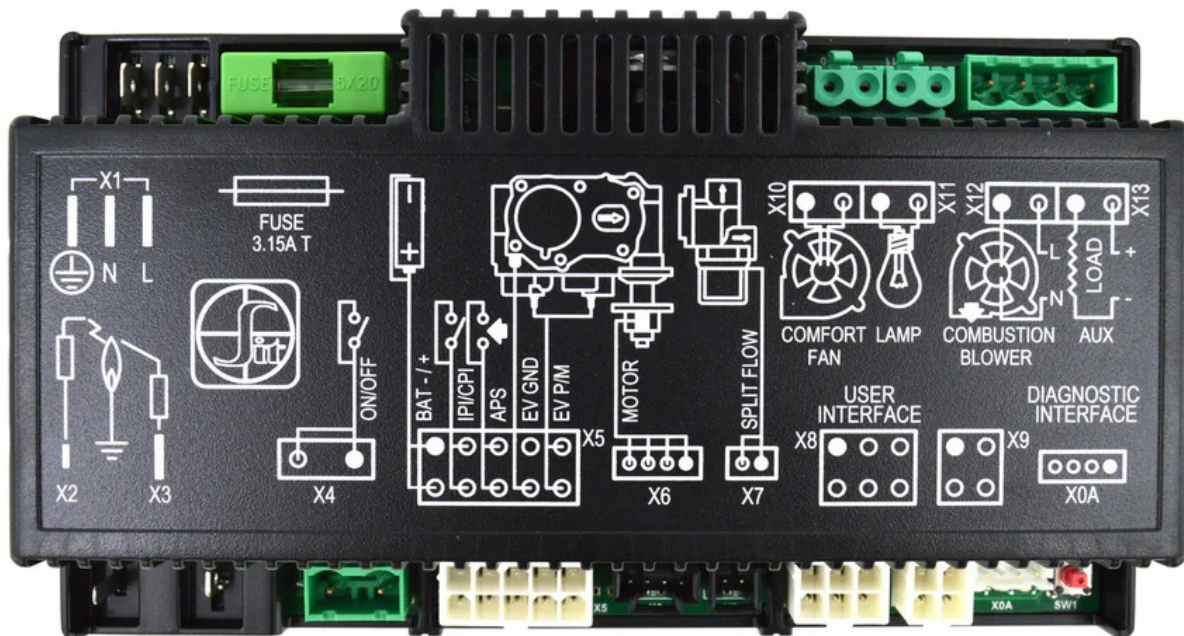
[Home](#) » [ALLPARTS](#) » AllParts Board Programming To Remote Transmitter Instructions 

Contents

- [1 AllParts Board Programming To Remote Transmitter](#)
- [2 Specifications](#)
- [3 Product Usage Instructions](#)
- [4 FAQs](#)
- [5 USING INSTRUCTION](#)
- [6 CONTACT INFORMATION](#)
- [7 Documents / Resources](#)
 - [7.1 References](#)

**Allparts Equipment &
Accessories Inc.**

AllParts Board Programming To Remote Transmitter



Specifications

- **Product Name:** IFC Control Board
- **Function:** Programming to Remote Transmitter
- **Contact Information:**
 - Call: 1-[269-685-4123](tel:269-685-4123)
 - Text: 1-[269-447-0412](tel:269-447-0412)
 - Email: customerservice@allpartsinc.com

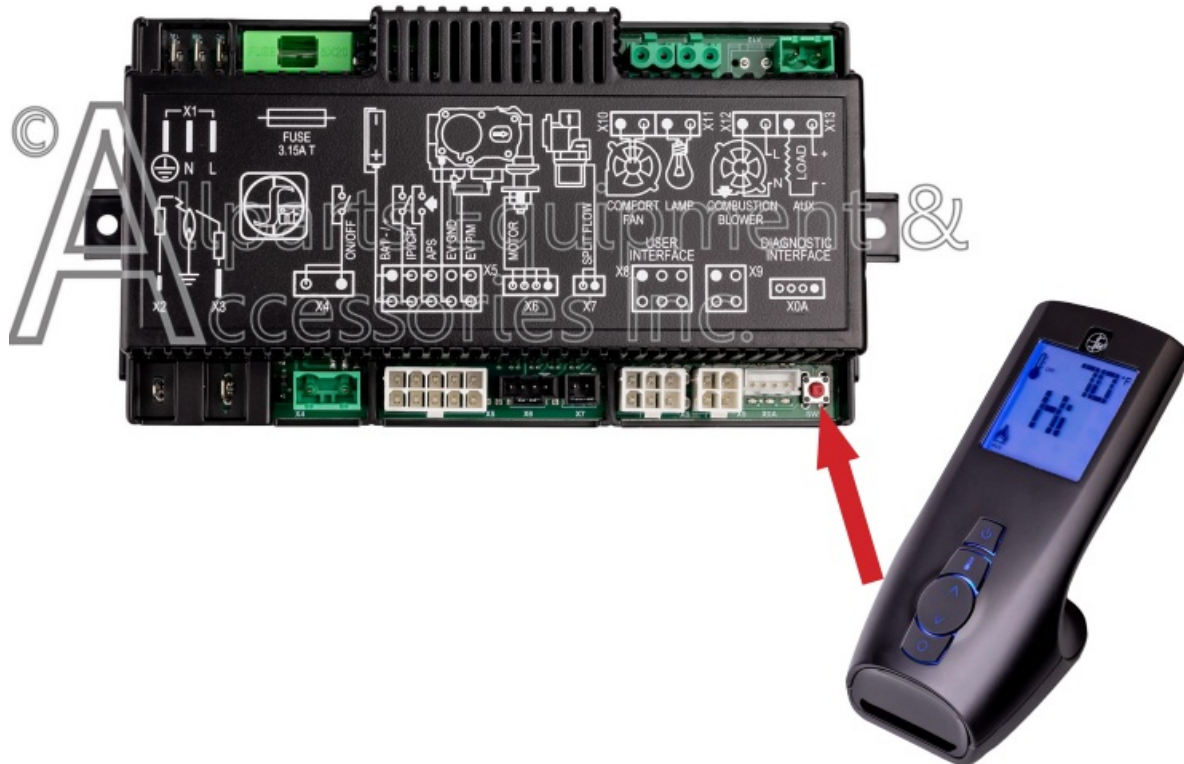
Product Usage Instructions

1. **Step 1:** Ensure the IFC Control Board is powered on and ready for programming.
2. **Step 2:** Locate the Remote Transmitter module and ensure it is functioning properly.
3. **Step 3:** Press the programming button on the IFC Control Board to start the programming mode.
4. **Step 4:** Follow the instructions provided with the Remote Transmitter to initiate programming mode on the transmitter.
5. **Step 5:** Once in programming mode, press the necessary buttons on both the IFC Control Board and Remote Transmitter to establish a connection.
6. **Step 6:** Upon successful connection, you should hear additional beeps confirming the programming completion.

FAQs

- **Q: How do I know if the remote is successfully programmed to the IFC module?**
 - A: Upon successful programming, you will hear additional beeps indicating the completion of the programming process.
- **Q: What should I do if I encounter any issues during the programming process?**
 - A: If you face any difficulties or have questions, please refer to the contact information provided above to reach out for assistance.

USING INSTRUCTION




Before use, the new IFC board must be programmed to your remote transmitter:

- Locate the red button on your IFC board labeled SW1: this is the remote sync button.
- Press this button 1 time and you will hear an audible beep from the module. Now turn the remote on and you should hear additional beeps indicating that the remote is now programmed to the new IDC module.

CONTACT INFORMATION

- If you have any questions, please contact us:
- Call: 1-[269-685-4123](tel:269-685-4123)
- Text: 1-[269-447-0412](tel:269-447-0412)
- Email: customerservice@allpartsinc.com

Documents / Resources

 <p>IFC Control Board Programming To Remote Transmitter Instructions</p> <p>AllParts Board Programming To Remote Transmitter</p> <p>• Locate the red button on your IFC board labeled SW1. This is the remote sync button.</p> <p>• Press the button 1 time and you will hear an audible beep from the module. Now turn the remote on and you should hear additional beeps indicating that the remote is now programmed to the new IDC module.</p> <p>AllParts Inc.</p>	<p>AllParts Board Programming To Remote Transmitter [pdf] Instructions</p> <p>Board Programming To Remote Transmitter, Programming To Remote Transmitter, Remote Transmitter, Transmitter</p>
---	---

References

- [User Manual](#)

Manuals+. Privacy Policy

This website is an independent publication and is neither affiliated with nor endorsed by any of the trademark owners. The "Bluetooth®" word mark and logos are registered trademarks owned by Bluetooth SIG, Inc. The "Wi-Fi®" word mark and logos are registered trademarks owned by the Wi-Fi Alliance. Any use of these marks on this website does not imply any affiliation with or endorsement.