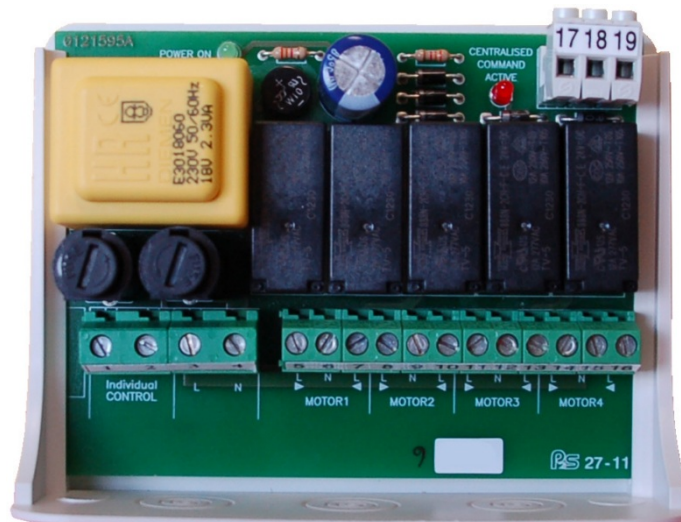




ALLMATIC AV10 Control Unit For Control Up To 4 Tubular Motors User Manual

[Home](#) » [ALLMATIC](#) » ALLMATIC AV10 Control Unit For Control Up To 4 Tubular Motors User Manual 

ALLMATIC AV10 Control Unit For Control Up To 4 Tubular Motors User Manual



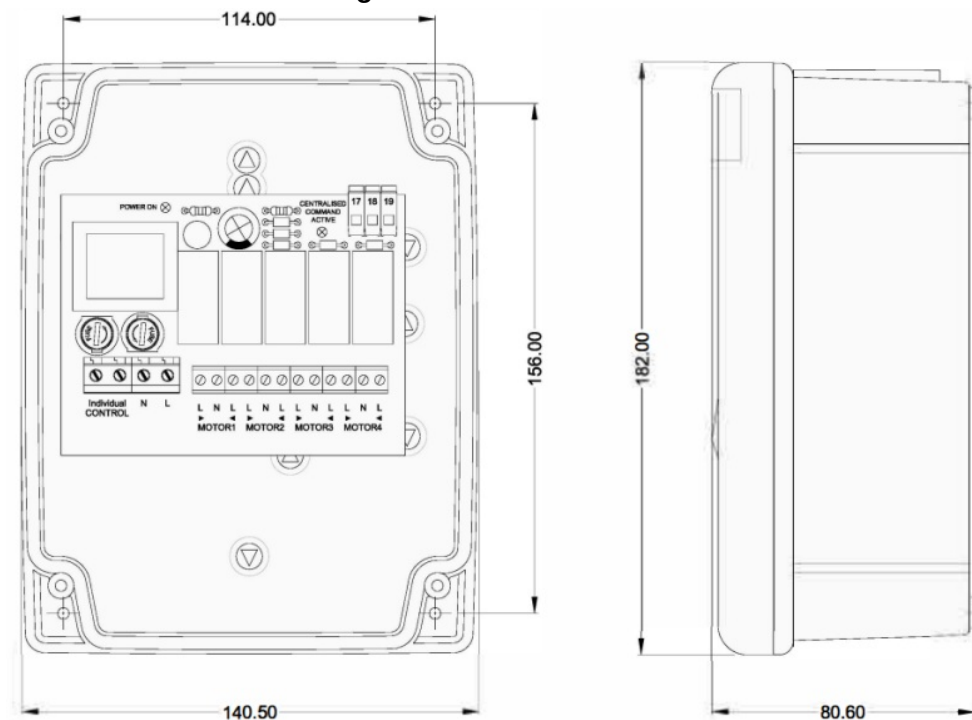
Contents

- [1 PRODUCT VIEW](#)
- [2 INSTALLATION](#)
- [3 WIRING FOR GROUP CONTROL](#)
- [4 WIRING FOR INDIVIDUAL CONTROL](#)
- [5 PRODUCT DISPOSAL](#)
- [6 WARRANTY](#)
- [7 Documents / Resources](#)
 - [7.1 References](#)
- [8 Related Posts](#)

PRODUCT VIEW

Overall dimensions: 140.50 x 182.00 x 80.60 mm

Dimensions of the mounting holes: 114.00 x 156.00 mm



INSTALLATION

1. Connect the 230vac power supply as shown.
2. If an engine operates in the wrong direction reverse the appropriate Black and Brown cables.



ATTENTION

- Connect all ground wires of tubular motors together with the ground.
- The maximum current absorbed for each output is 4 A.

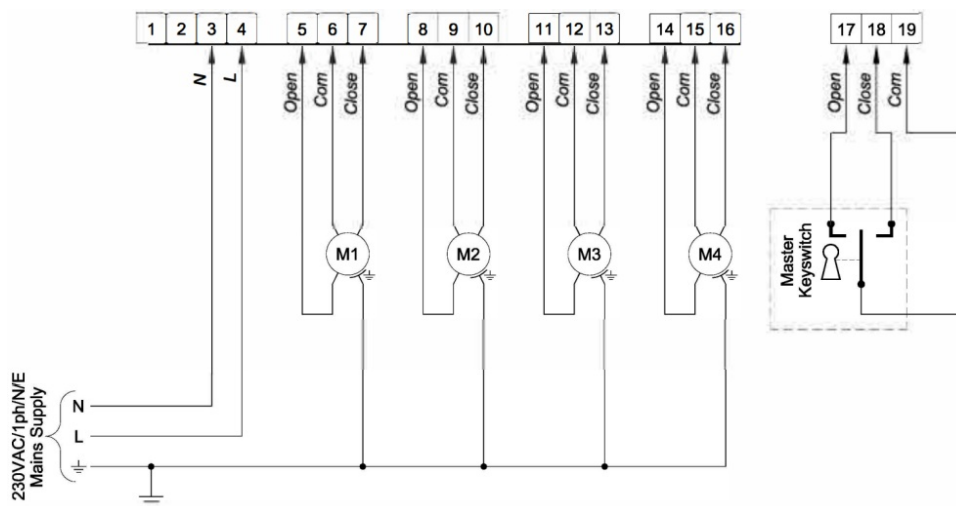
WIRING FOR GROUP CONTROL

Master Keyswitch: Allows all connected motors to operate simultaneously.



ATTENTION

- The maximum total load allowed for group control is 6.3 A.



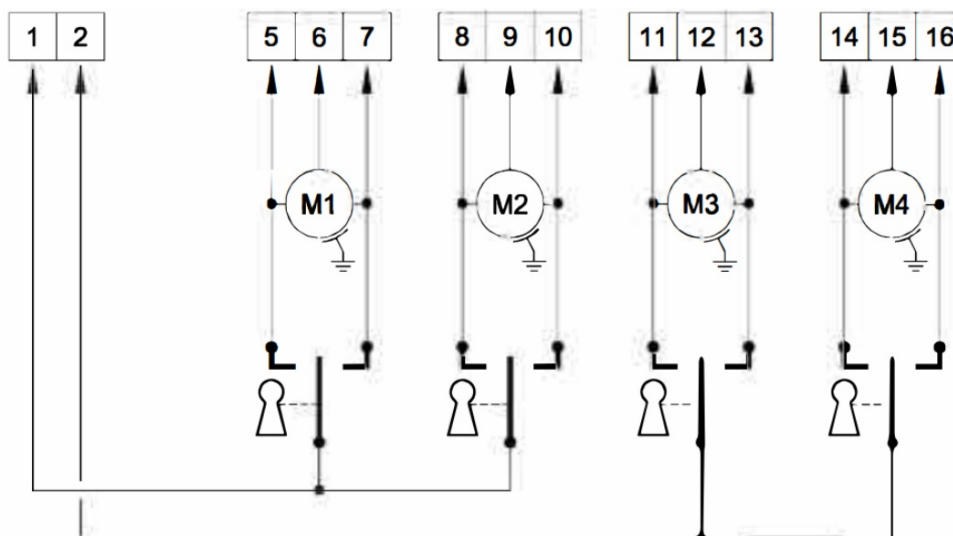
WIRING FOR INDIVIDUAL CONTROL

Individual Key switches: It allows the individual operation of the tubular motors through their corresponding selector.



ATTENTION

- Activate only one engine at a time.



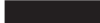
PRODUCT DISPOSAL

This product is an integral part of automation, and therefore must be disposed of together with it. As with installation operations, even at the end of the life of this product, dismantling operations must be carried out by qualified personnel. This product consists of various types of materials: some can be recycled, others must be disposed of. Find out about the recycling or disposal systems required by the regulations in force in your territory for this category of product.



WARNING



-  Certain parts of the product may contain pollutants or dangerous substances which, if dispersed in the environment, could have harmful effects on the environment and human health.

As indicated by the symbol on the side, it is forbidden to throw this product into household waste. Then perform the “separate collection” for disposal, according to the methods provided by the regulations in force in your territory, or return the product to the seller when buying a new equivalent product.

- The regulations in force at local level may provide for heavy penalties in case of improper disposal of this product.

WARRANTY

The manufacturer's warranty is valid from the date stamped on the product and is limited to the repair or replacement free of charge of the parts recognized by the same as defective due to lack of essential quality in the materials or lack of processing.

The warranty does not cover damage or defects due to external agents, maintenance deficiency, overload, natural wear, choice of incorrect type, assembly error, or other causes not attributable to the manufacturer. Tampered products will not be guaranteed or repaired. The data given are purely indicative. No liability may be charged for reductions in scope or malfunctions due to environmental interference. The liability of the manufacturer for damage caused to anyone by accidents of any nature caused by our defective products, are only those that derive from the Italian law.

Symbols



ALLMATIC S.r.l

32026 Borgo Valbelluna – Belluno – Italy

Via dell'Artigiano, n°1 – Z.A.


Tel. 0437 751175 – 751163 r.a. Fax 0437 751065

www.allmatic.com

E-mail: info@allmatic.com



Documents / Resources

 <p>ALLMATIC AV4</p> <p>CONTROL UNIT FOR MANUAL CONTROL OF 4 TUBULAR MOTORS</p> <p>INSTALLATION AND USE MANUAL</p>	<p>ALLMATIC AV10 Control Unit For Control Up To 4 Tubular Motors [pdf] User Manual AV4, AV6, AV10, AV10 Control Unit For Control Up To 4 Tubular Motors, AV10, Control Unit For Control Up To 4 Tubular Motors, Unit For Control Up To 4 Tubular Motors, Control Up To 4 Tubular Motors, Tubular Motors, Motors</p>
--	---

References

- [Allmatic - Automation systems - Designed and built to last.](#)
- [User Manual](#)