



allgood Electromagnetic Hold Open Device Instruction Manual

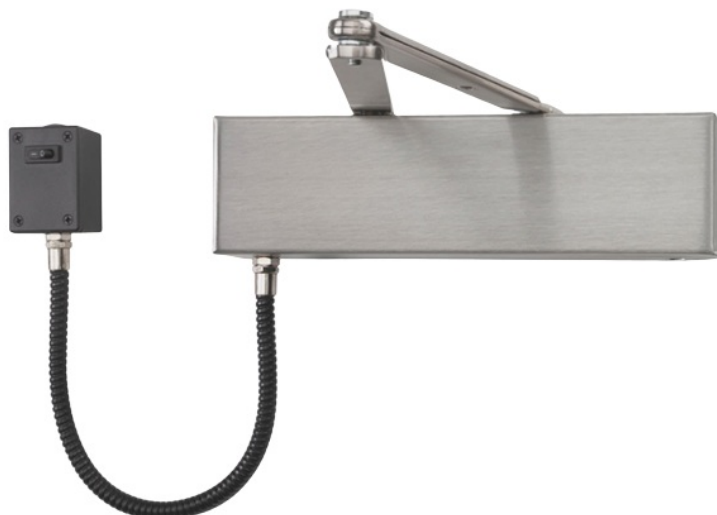
[Home](#) » [allgood](#) » allgood Electromagnetic Hold Open Device Instruction Manual 

Contents

- [1 allgood Electromagnetic Hold Open Device](#)
- [2 Dimension](#)
- [3 Installation Instruction](#)
- [4 Documents / Resources](#)
 - [4.1 References](#)
- [5 Related Posts](#)

@lgood

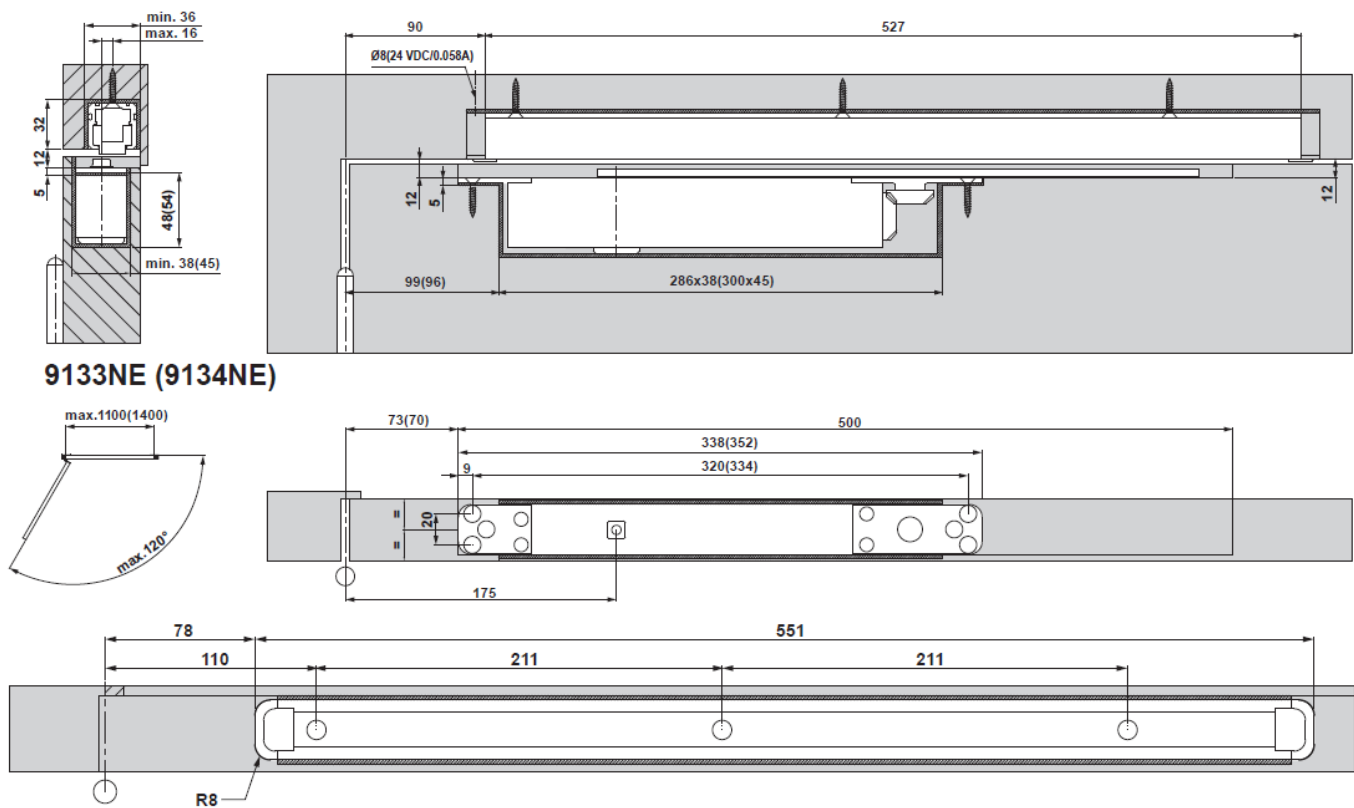
allgood Electromagnetic Hold Open Device







Fixing instructions for Electro-magnetic hold open device for:

9133NE/9134NE concealed closers when used with the approved 2mm thick intumescent kit for fire-rated doors. Dimensions in brackets refer to the 9134NE EN3-6 model. Please disregard channel fixing instructions/dimensions supplied with mechanical door closers if this Electromagnetic hold-open version is being used. Issue 01-02/22.

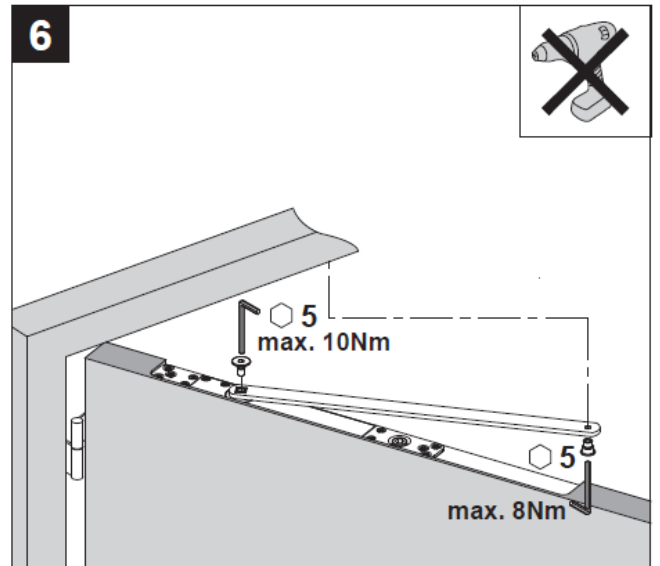
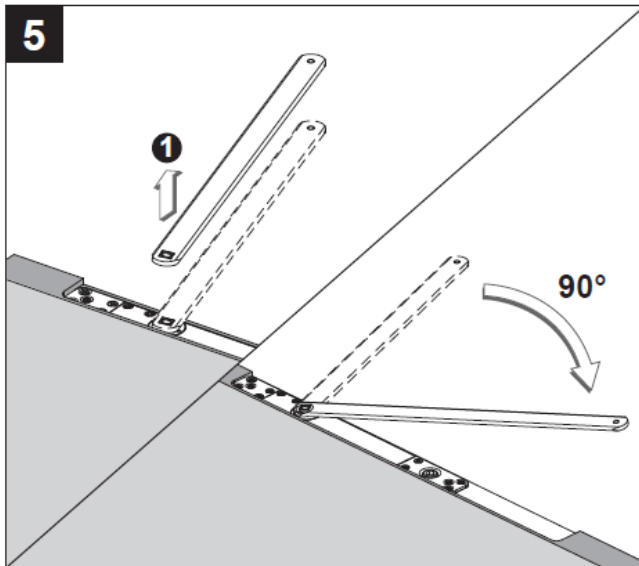
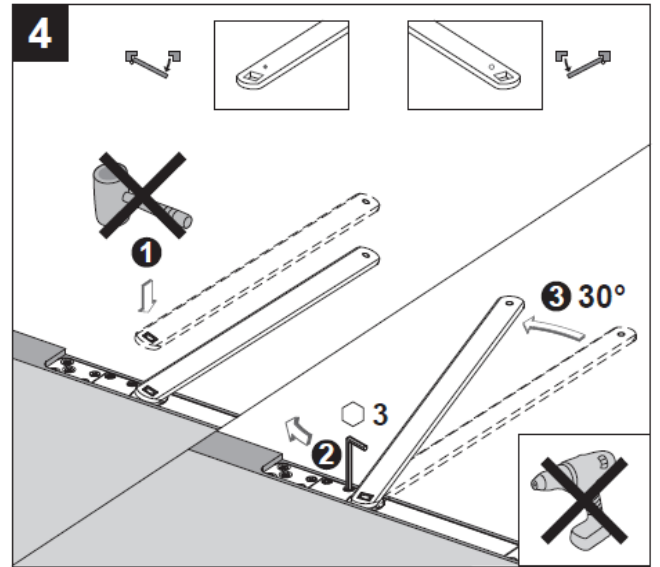
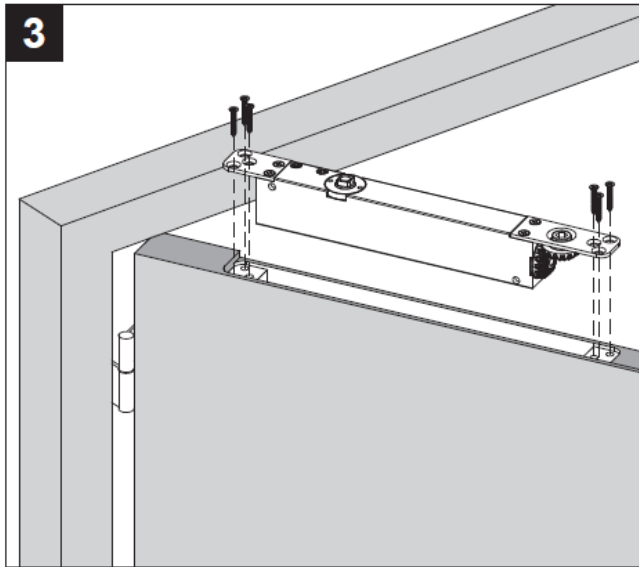
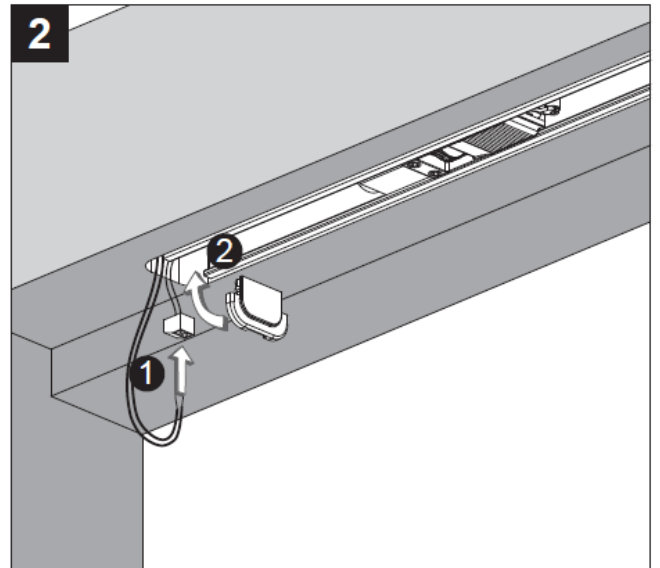
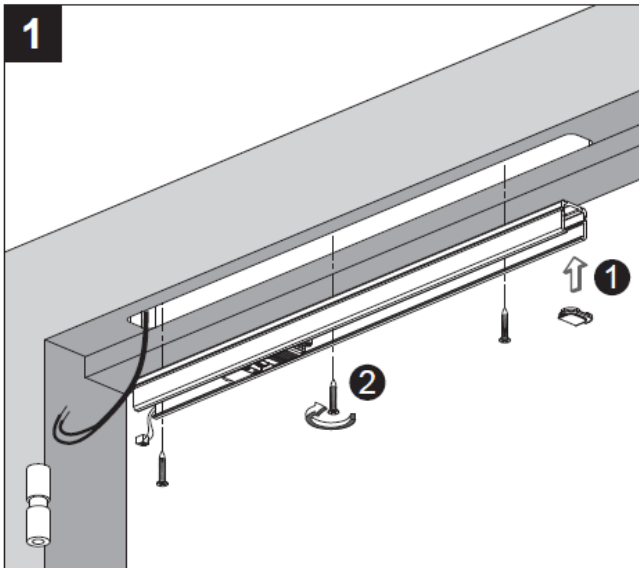
Dimension

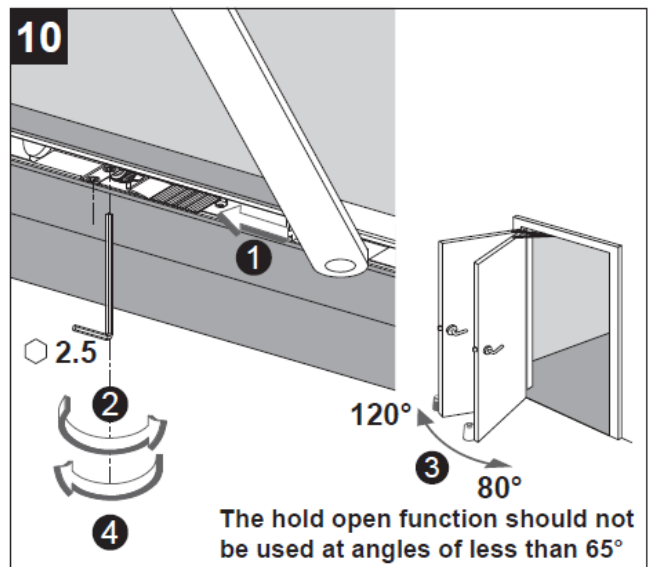
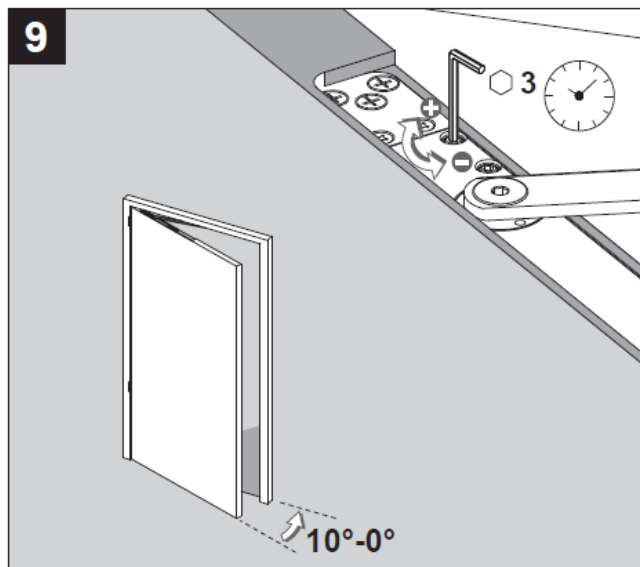
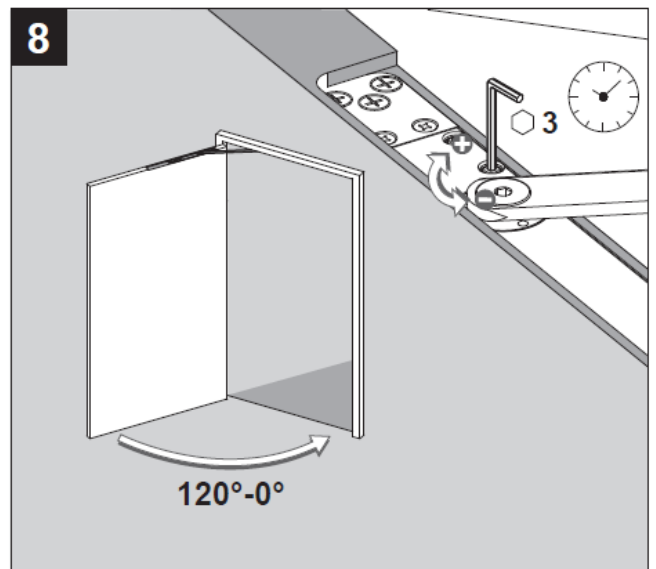
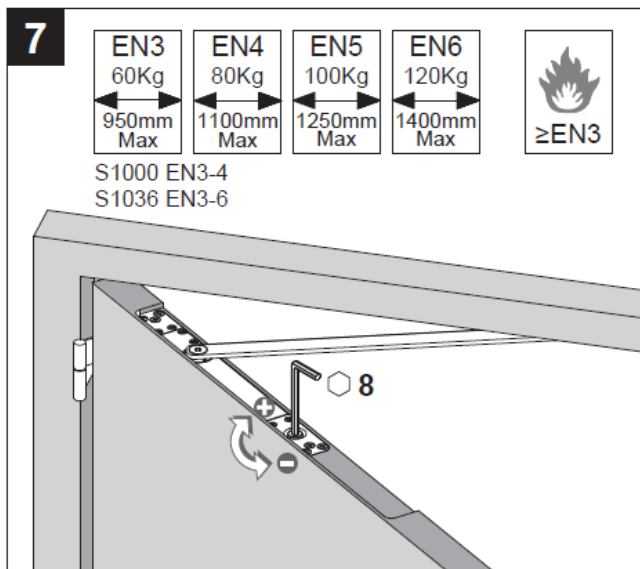


 9133NE	ALLGOOD PLC 63-83 BREARLEY STREET BIRMINGHAM B19 3NT		APPROVED PRODUCT CF 6022				
2812-CPR-AE7849	EN 1155: 1997/A1:2002/AC:2006	3	8	3-4	1	1	3

 9134NE	ALLGOOD PLC 63-83 BREARLEY STREET BIRMINGHAM B19 3NT		APPROVED PRODUCT CF 6022				
2812-CPR-AE7849	EN 1155: 1997/A1:2002/AC:2006	3	8	6-3	1	1	3

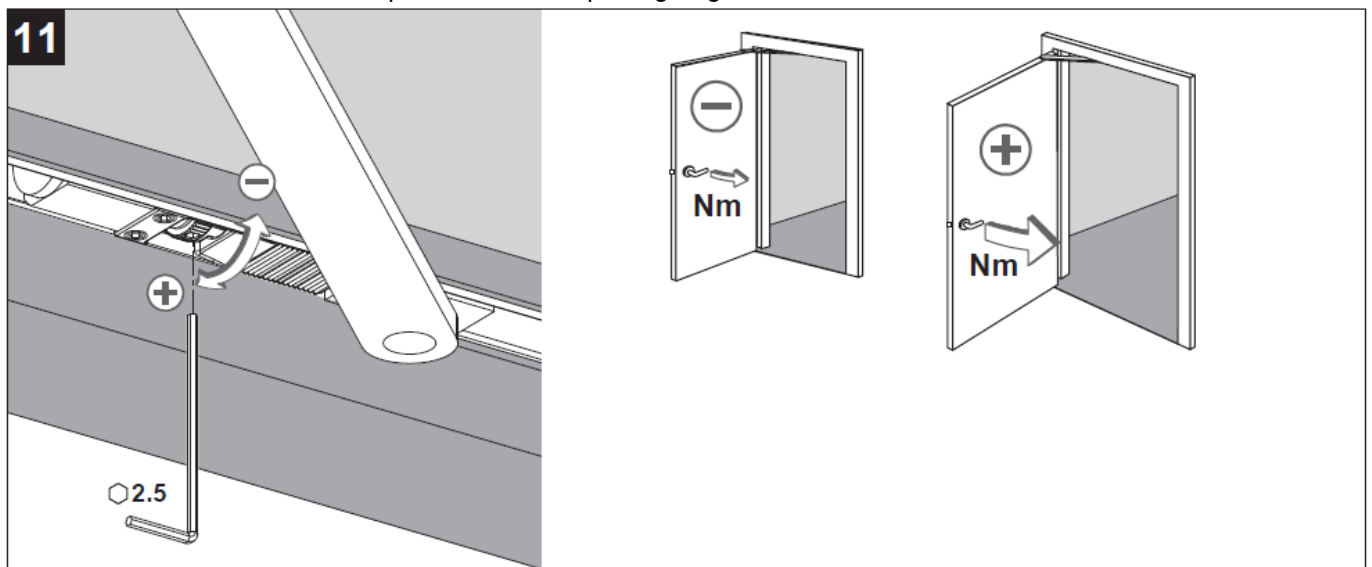
Installation Instruction



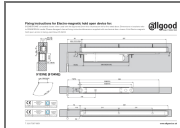


Adjust the pull-off force to suit the door width and size of the door closer. Notice, if the pull-off force is set too high, it may damage the hinges and the fixing of the door closer system.

1155 states that the release torque at 90° door opening angle should be between 40 and 120 Nm.



Documents / Resources



[allgood Electromagnetic Hold Open Device](#) [pdf] Instruction Manual
Electromagnetic Hold Open Device, Electromagnetic Open Device, Hold Open Device, Open Device

References

- [@Architectural Ironmongery And Hardware Manufacturer](#)