



[Home](#) » [allen plus roth](#) » **allen plus roth 1-1-2 In Cordless Blackout Cellular Shade Instruction**

Manual 

Contents [[hide](#)]

[1 Allen Plus Roth 1-1-2 In Cordless Blackout Cellular Shade](#)

[2 Product Usage Instructions](#)

[3 PACKAGE CONTENTS](#)

[4 HARDWARE CONTENTS](#)

[5 PREPARATION](#)

[6 ASSEMBLY INSTRUCTIONS](#)

[7 SHORTEN WIDTH OF BLIND](#)

[8 CARE AND MAINTENANCE](#)

[9 WARRANTY](#)

[10 REPLACEMENT PARTS LIST](#)

[11 FAQ](#)

[12 Documents / Resources](#)

[12.1 References](#)

allen + roth[®]

Allen Plus Roth 1-1-2 In Cordless Blackout Cellular Shade



Specifications

- **Brand:** ALLEN+ROTH
- **Model:** 6913480
- **Type:** Cordless Blackout Cellular Shade
- **Width:** 1-1/2 inches
- **Country of Origin:** Taiwan

Product Usage Instructions

Preparation

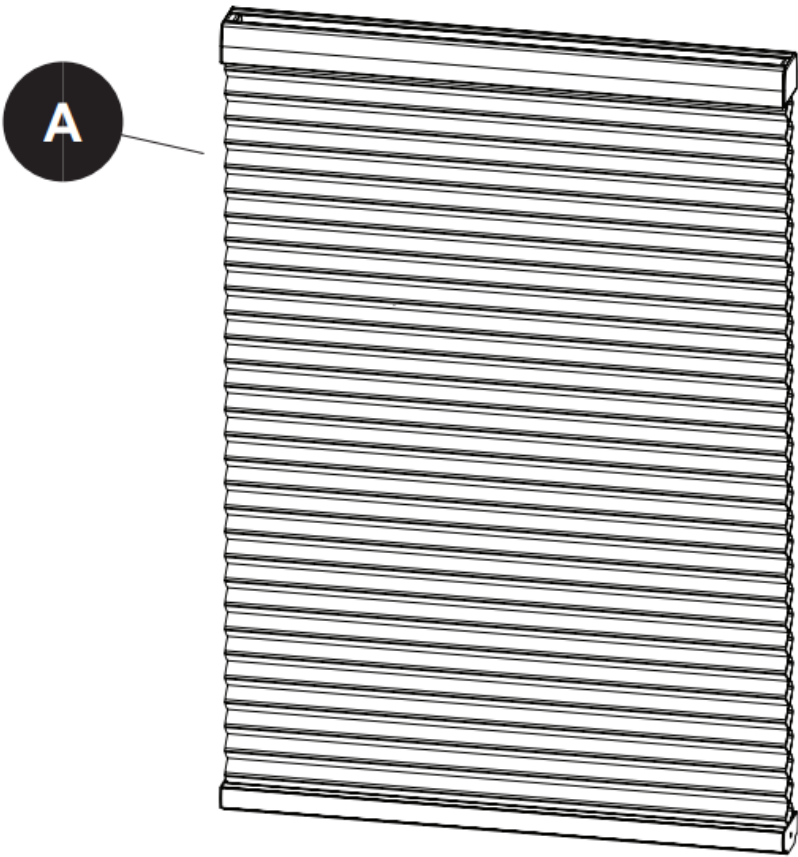
- Before starting the assembly, ensure all parts are present and undamaged. Cross-check with the package contents and the hardware contents list.
- If any part is missing or damaged, do not proceed with assembly.
- **Estimated Assembly Time:** 30 minutes
- **Tools Required for Assembly (not included):** Measuring tape, drill with 3/32 in. bit, pencil

- **Helpful Tools (not included):** Step stool

Bracket Location and Installation

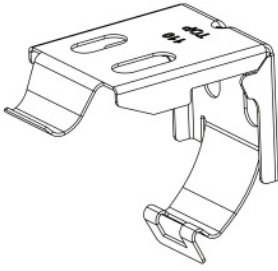
- The shade can be installed inside or outside the window frame.
- Each end of the headrail should have a mounting bracket.
- For wider shades needing 3 or more brackets, space them evenly.
- Ensure brackets do not interfere with cords or mechanisms inside the headrail.

PACKAGE CONTENTS



PART	DESCRIPTION	QUANTITY
A	Shade	1

HARDWARE CONTENTS

AA

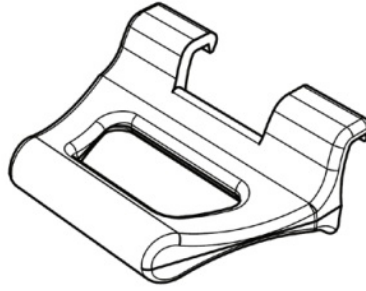
Mounting
Bracket

23 in. - 47 in.

Qty. 2

48 in. - 72 in.

Qty. 3

BB

Handle

Qty. 1

CC

Wood Screw

23 in. - 47 in.

Qty. 4

48 in. - 72 in.

Qty. 6

PREPARATION

- Before beginning assembly of the product, make sure all parts are present. Compare parts with the package contents list and the hardware contents list. If any part is missing or damaged, do not attempt to assemble, install or operate the product.
- **Estimated Assembly Time:** 30 minutes
- **Tools Required for Assembly (not included):** Measuring tape, drill with 3/32 in. bit, and pencil.
- **Helpful Tools (not included):** Step stool.

Bracket Location and Installation:

- The shade may be installed either inside or outside the window frame. A mounting bracket should be positioned on each end of the headrail. Wider shades that require 3 or more brackets should be spaced evenly between the two outermost brackets.
- Always position the brackets such that there is no interference with cords and mechanisms inside the headrail. The procedure outlined below will assure proper bracket placement.

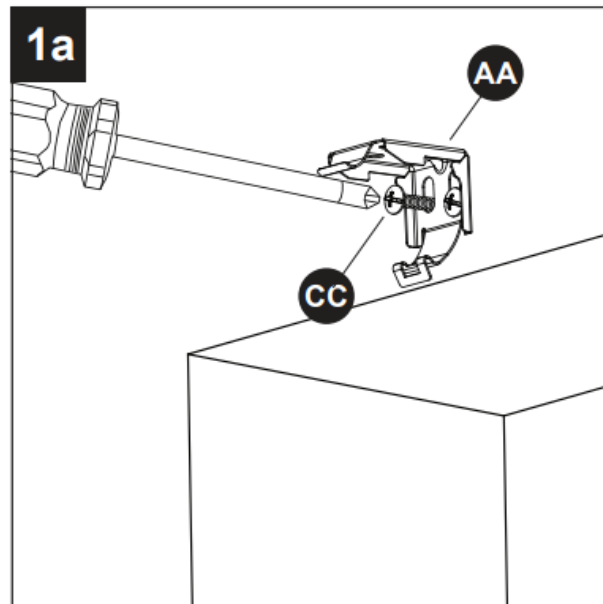
ASSEMBLY INSTRUCTIONS

1. **a.** For outside mounting, clip the mounting (AA) onto the headrail of the shade (A).

Hold shade (A) level at the height desired and centre it over the window opening.

Mark the exact location of each mounting bracket (AA) with a pencil.

- Remove the mounting brackets (AA) from the headrail of the shade (A). Predrill the screw holes and then secure the bracket (AA) to the wall or window moulding with wood screws (CC).



• Hardware Used



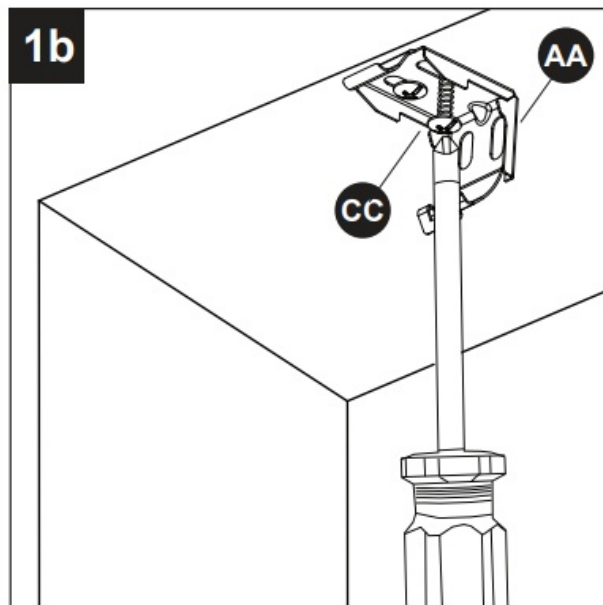
Mounting Bracket



Wood Screw



- **b.** For inside mounting, clip the mounting brackets (AA) onto the headrail of the shade (A). Hold shade (A) in place and make a pencil mark at the rear of each mounting bracket (AA).
- Remove the mounting brackets (AA) from the headrail. Predrill the screw holes and then secure the mounting bracket (AA) to the wall or window moulding with wood screws (CC).



- **Hardware Used**



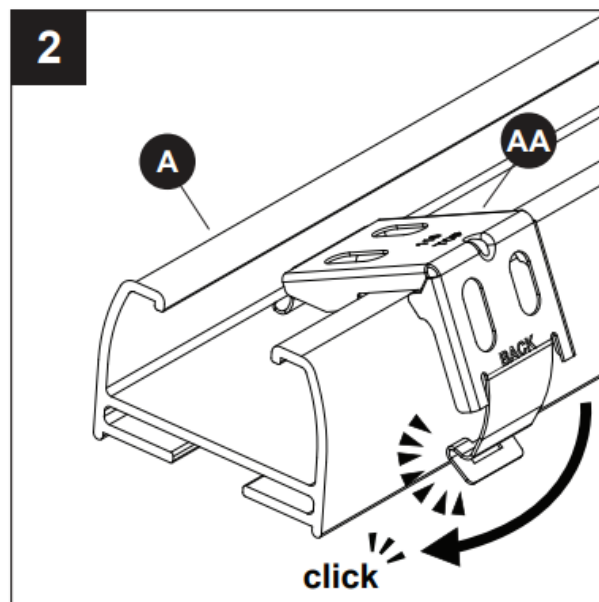
Mounting Bracket



Wood Screw



2. Lift the headrail of shade (A) into position such that the inner front edge of the headrail slides into the slot at the front of each mounting bracket (AA).



- Push the headrail upward until the flexible tab at the bottom of each mounting bracket (AA) snaps onto the back of the headrail.
- Check carefully to ensure each mounting bracket (AA) is properly snapped into place.

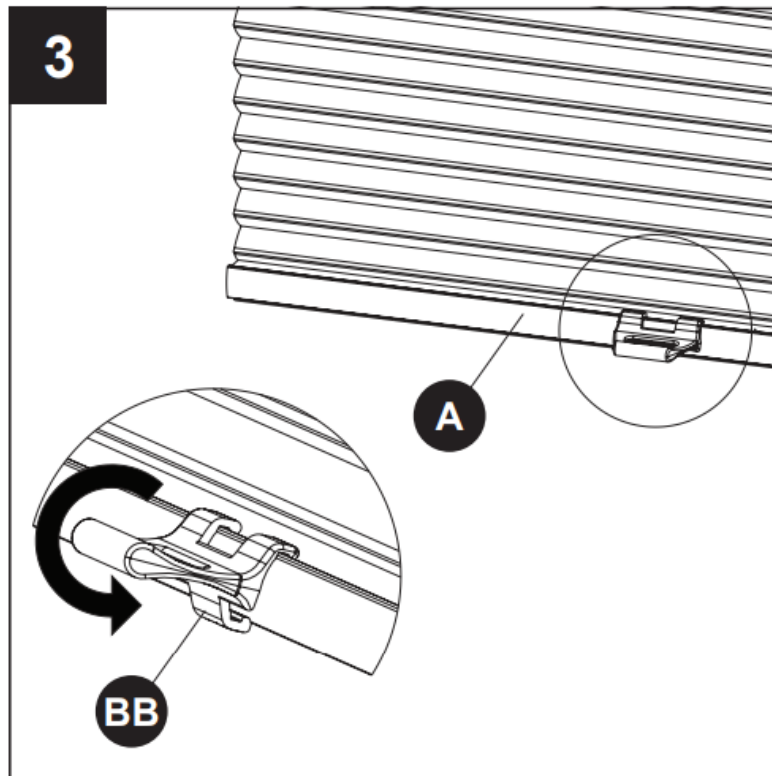
- **Hardware Used**



Mounting Bracket



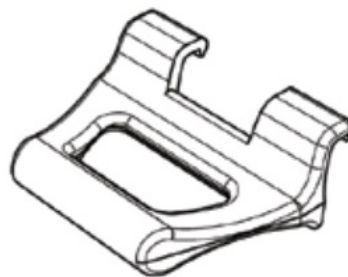
3. Attach the handle (BB) to the centre of the bottom rail of the shade (A). Check carefully to ensure that the handle (BB) is properly snapped into place.



• Hardware Used

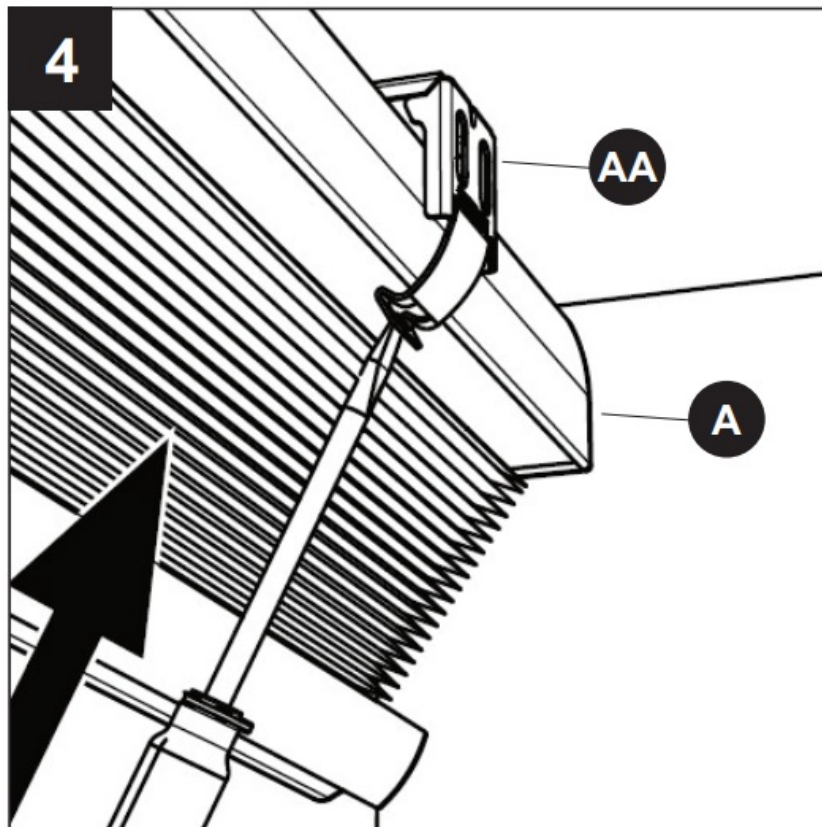


Handle



x 1

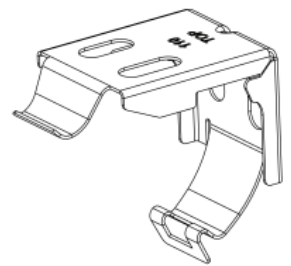
4. **OPTIONAL:** To remove the shade (A) from the mounting brackets (AA) after installation, lift the bottom of the shade (A) to gain access to the flexible tab on the bottom of the mounting brackets (AA).
- Use a screwdriver (Not Included) to press in the flexible tab until the shade loosens. Repeat for all mounting brackets (AA).



- **Hardware Used**



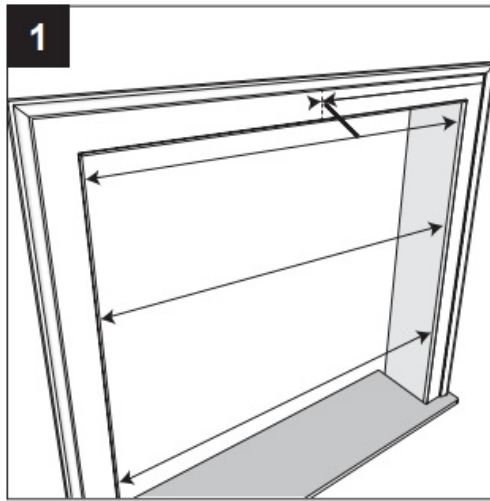
Mounting Bracket



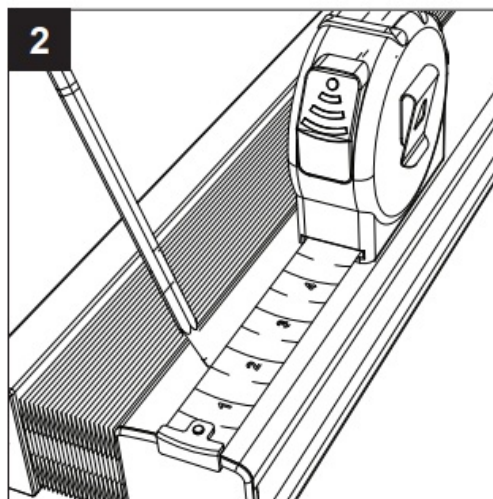
SHORTEN WIDTH OF BLIND

This item is manufactured to allow up to 2 inches on each end of shade (A) to be trimmed for a total of up to 4 inches (Note: 23 in. width shades allow up to 1 inch on each end of the shade (A) for a total of up to 2 inches).

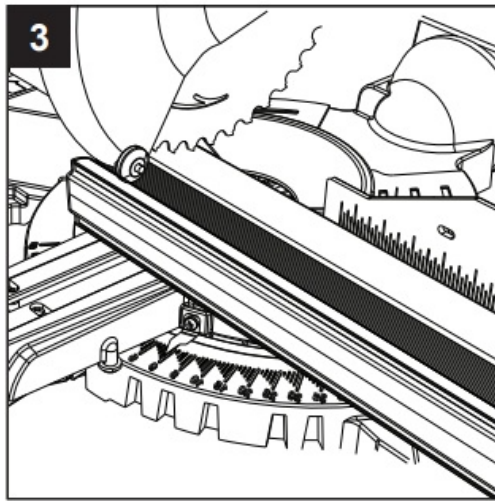
1. Remove shade (A) from the box. Determine the width of the installation site by measuring width at top, middle and bottom of opening.
 - Using the smallest of the 3 measurements, this is the width needed to measure on the shade (A).
 - **IMPORTANT:** Double-check measurements before cutting. Shades (A) cut in error do not qualify for warranty return.



2. Measure the actual width of the shade (A) and subtract the width determined in step 1. This is the total trimming amount from shade (A).
 - If the total trimming amount is 1/2 inch or less, only trim one end of the shade (A).
If the total trimming amount is greater than 1/2 inch, divide the number by 2 and trim the amount from each end of the shade (A).
 - Pencil a mark on the ends (s) of the headrail at the determined width(s).
 - **Example:** 35 1/2 inches -33 inches
 - Actual width of blind before cuts, Window opening (total from step 1)
 - =2 1/2 inches
 - ÷ 2
 - =1 1/4 inches Amount to trim from each end

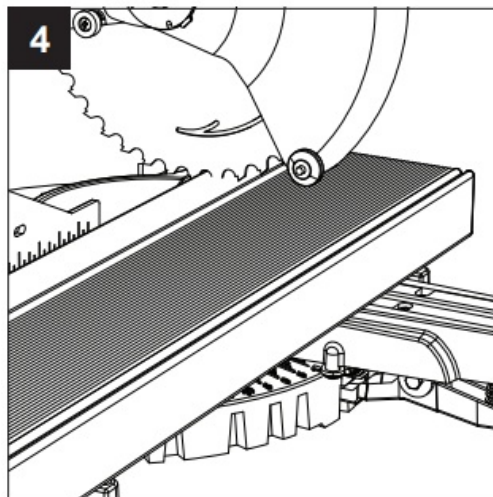


3. Line up the saw blade with the desired cutting mark on the shade (A).



4. Using a 10 in. sliding mitre saw, 12 in. mitre saw, or radial arm saw (not included), lay the shade (A) on the saw. Cut through shade (A) and repeat the process if cutting both ends.

- **IMPORTANT:** Always follow the safety guidelines included with the power tool(s).
- Proceed to ASSEMBLY INSTRUCTIONS to complete installation.



CARE AND MAINTENANCE

The vinyl headrail and bottom rail can be wiped clean with a damp sponge. To clean the shade fabric, use a feather duster or vacuum lightly using the soft brush attachment.

WARRANTY

- For a period of one (1) year from the date of purchase, the manufacturer will replace this window covering with one of equal or superior value if this window covering is found to be defective in material or workmanship.
- To obtain warranty service, contact our customer service department at 8664399800. This warranty does not cover damage or defects caused by or resulting from improper

maintenance, negligent or improper use, abuse, misuse, neglect, accidents, act of God, alteration, commercial use, installation, removal or reinstallation. This warranty is restricted to normal consumer use within the United States and Canada.

- MANUFACTURER WILL NOT BE LIABLE FOR INCIDENTAL OR CONSEQUENTIAL DAMAGES.
- SOME STATES DO NOT ALLOW THE EXCLUSION OR LIMITATION OF INCIDENTAL OR CONSEQUENTIAL DAMAGES, SO THE ABOVE LIMITATION OR EXCLUSION MAY NOT APPLY TO YOU.
- This warranty gives you specific legal rights, and you may also have other rights which vary from state to state.

REPLACEMENT PARTS LIST

- For replacement parts, call our customer service department at [866-439-9800](tel:866-439-9800), 8 a.m. – 8 p.m., EST, Monday – Sunday.
- You may also contact us at ascs@lowes.com.

PAR T	DESCRIPTION	PART #	COVERED UNDER WARRA NTY
	Hardware Box	79074-15BCZ000HW2L AM	NO

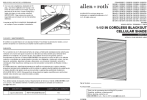
- Serial Number_____
- Purchase Date_____
- Thank you for purchasing this ALLEN+ROTH product. Questions, problems or missing parts?
- Before returning, contact us at 8664399800, 8 a.m. – 8 p.m. EST or ascs@lowes.com.

FAQ

- **Q: What should I do if a part is missing or damaged?**
 - **A:** If any part is missing or damaged, do not attempt to assemble, install, or operate the product. Contact customer support for assistance.

- **Q: Can I use this shade for both inside and outside mounting?**
 - **A:** Yes, the shade is designed to be installed either inside or outside the window frame. Follow the provided instructions for proper installation.
- **Q: How do I reduce the width of the shade?**
 - **A:** Use a sliding compound mitre saw or radial arm saw to trim the shade to the desired width. Follow safety guidelines when using power tools.

Documents / Resources

	allen plus roth 1-1-2 In Cordless Blackout Cellular Shade [pdf] Instruction Manual 1-1-2 In Cordless Blackout Cellular Shade, Cordless Blackout Cellular Shade, Blackout Cellular Shade, Cellular Shade
---	--

References

- [User Manual](#)

allen plus

roth

1-1-2 In Cordless Blackout Cellular Shade, allen plus roth, Blackout Cellular Shade, Cellular Shade, Cordless Blackout Cellular Shade

Leave a comment

Your email address will not be published. Required fields are marked *

Comment *

Name

Email

Website

☐ Save my name, email, and website in this browser for the next time I comment.

Post Comment

Search:

e.g. whirlpool wrf535swhz

Search

[Manuals+](#) | [Upload](#) | [Deep Search](#) | [Privacy Policy](#) | [@manuals.plus](#) | [YouTube](#)

This website is an independent publication and is neither affiliated with nor endorsed by any of the trademark owners. The "Bluetooth®" word mark and logos are registered trademarks owned by Bluetooth SIG, Inc. The "Wi-Fi®" word mark and logos are registered trademarks owned by the Wi-Fi Alliance. Any use of these marks on this website does not imply any affiliation with or endorsement.