

# ALLEGION L400 Series Gen 2 Indicator Lock Case User Guide

## Contents

- [1 ALLEGION L400 Series Gen 2 Indicator Lock Case](#)
- [2 Specifications:](#)
- [3 FAQ:](#)
  - [3.1 Q: Are the lock dimensions provided in the manual accurate?](#)
  - [3.2 Q: Do I need special tools for installation?](#)
- [4 Documents / Resources](#)
  - [4.1 References](#)

## ALLEGION L400 Series Gen 2 Indicator Lock Case

### USER GUIDE

#### L400-Series Gen 2 Indicator Lock Case Dimensions

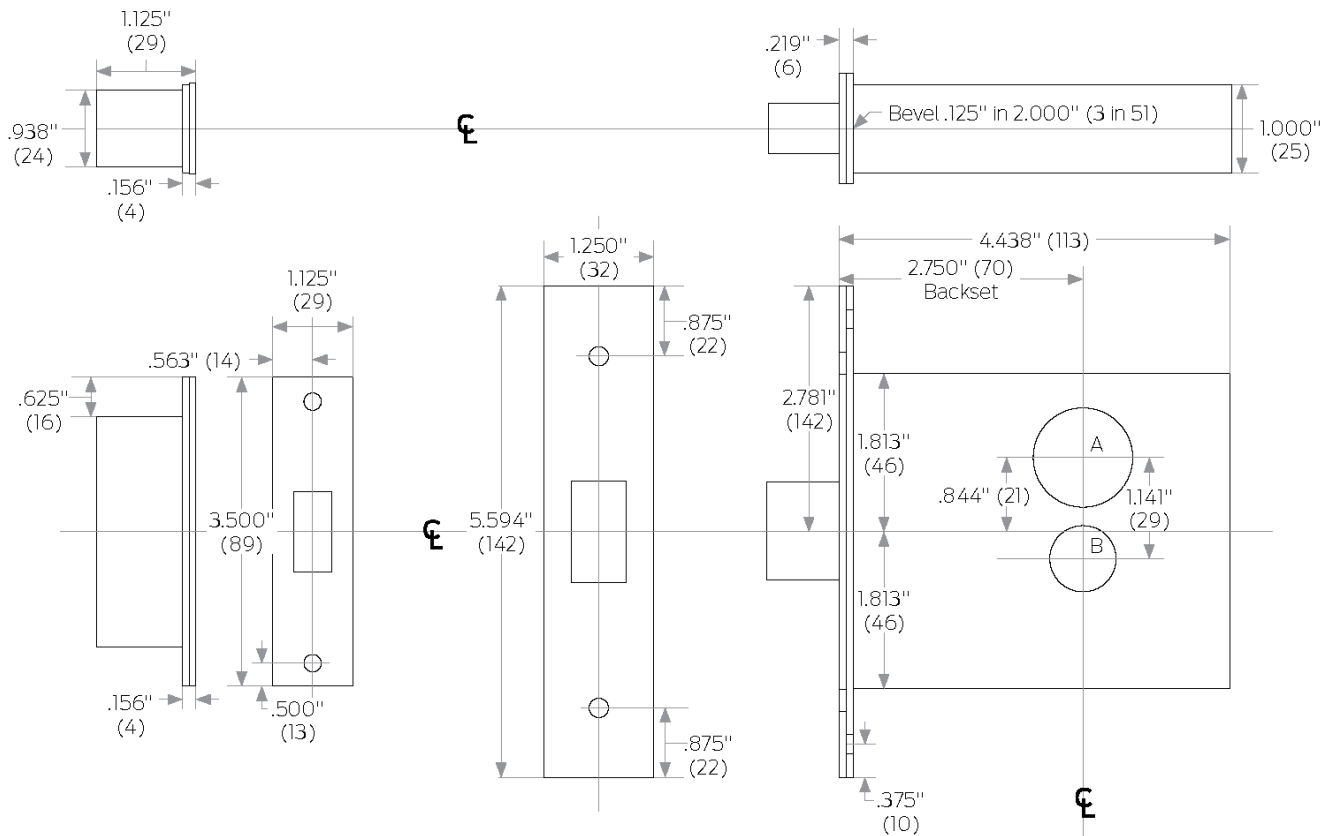
Case Size: 4.438" x 3.625" x 1" (113 mm x 92 mm x 25 mm)

Height Line to Center of Deadbolt: 1.813" (46 mm)

Backset: 2.750" (70 mm)

Door Range: 1.750" – 3" (44 mm–76 mm)

Lock Front: 1.250" x 5.594" x .219" (32 mm x 142 mm x 6 mm)



#### HOLES:

- A. Cylinder cut-out
- B. Turn piece and occupancy indicator

#### NOTES:

1. Dimensions are maximum for the product.
2. Templates are not to scale.
3. Standard strike is shown on each template for dimensions only.
4. Dimensions do not provide allowances for door silencers, weather stripping, sound proofing or other additions to door or door frames.

**ANSI Standards:** L400-Series locks meet all requirements for installations in doors and frames prepared in accordance with ANSI specifications A156.13, 2012.

**Metal Doors:** Suitable reinforcement is required to support lock case in center of door and to prevent door from compressing when trim is tightened. (See ANSI A115.1)

**Thick Doors:** Locks for non-standard door thickness may require special instructions.

**Lead Lining:** When L400-Series locks are ordered with lead lining, add 1/8" (3) to the width of the mortise cut-out on the lock case cover side of installation

#### Specifications:

- Case Size: 4.438 x 3.625 x 1 (113 mm x 92 mm x 25 mm)
- Backset: 2.750 (70 mm)
- Height Line to Center of Deadbolt: 1.813 (46 mm)
- ANSI Standards: L400-Series locks meet all requirements for installations in doors and frames prepared in accordance with ANSI specifications A156.13, 2012.

## FAQ:

**Q: Are the lock dimensions provided in the manual accurate?**

A: Yes, the dimensions listed in the manual are maximum values for the product. Ensure to follow the guidelines provided for accurate installation.

**Q: Do I need special tools for installation?**

A: Basic installation tools like a screwdriver, measuring tape, and a drill may be required. Refer to the user manual for specific tool requirements.

**Dimensions shown in parentheses () are in millimeters.**

Drawing not to scale.

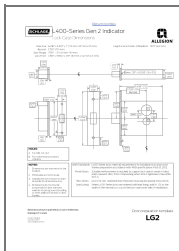
© 2024 Allegion

LG2 Rev. 03/24

[www.allegion.com/us](http://www.allegion.com/us)

---

## Documents / Resources



[ALLEGION L400 Series Gen 2 Indicator Lock Case](#) [pdf] User Guide  
LG2, L400 Series Gen 2 Indicator Lock Case, L400 Series, Gen 2 Indicator Lock Case, Indicator Lock Case, Lock Case, Case

## References

- [Allegion US | Redefining Access Control & Commercial Security](#)
- [User Manual](#)

[Manuals+](#), [Privacy Policy](#)

This website is an independent publication and is neither affiliated with nor endorsed by any of the trademark owners. The "Bluetooth®" word mark and logos are registered trademarks owned by Bluetooth SIG, Inc. The "Wi-Fi®" word mark and logos are registered trademarks owned by the Wi-Fi Alliance. Any use of these marks on this website does not imply any affiliation with or endorsement.