



ALLEGION 801-KS Local and Remote Monitor Control Station Installation Guide

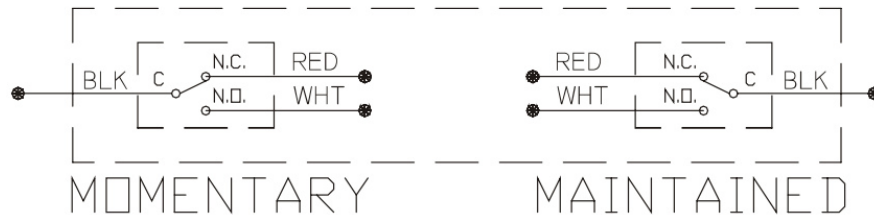
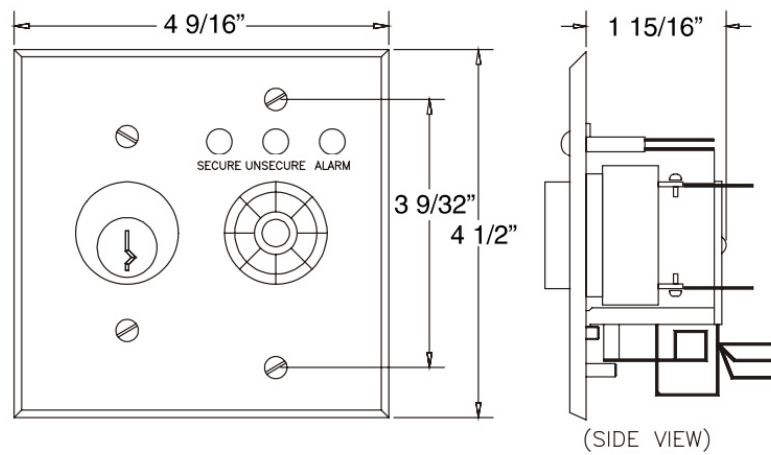
[Home](#) » [Allegion](#) » ALLEGION 801-KS Local and Remote Monitor Control Station Installation Guide 



Contents

- [1 801-KS Local and Remote Monitor Control Station](#)
- [2 Description](#)
- [3 Description of Operation](#)
- [4 Documents / Resources](#)
 - [4.1 References](#)
- [5 Related Posts](#)

801-KS Local and Remote Monitor Control Station



Specifications

Audible

Input Req: 10-28VDC/3-14mA

Rated: 70dB @ 2ft

Hook-Up Leads:

(4) 24 AWG – 6" long

BLK (C) – Common

RED (U) – Unsecured

RED (S) – Secure

RED (A) – Alarm

LED Indicators:

Input Req: 12-24VDC/30mA ea.

Secure – Green

Unsecured – Red

Alarm – Yellow

Keyswitch:

Contacts: 5Amp/30VDC

Wire Leads: 22AWG – 6" long

⚠ IMPORTANT NOTES ⚠

Unit must be equipped with MBS option for LEDs to work.

Description

Provides local signal to assure users that a delayed egress system is functioning (code requirement). Includes audible and visual indication of lock status and delay activation. Provides two (2) SPDT switches: one momentary, one maintained, which can be wired to release lock and/or reset alarm condition. The keyswitch requires a standard 1-1/4" mortise cylinder with a standard straight cam. Unit mounts in a standard, double-gang electrical box.

Description of Operation

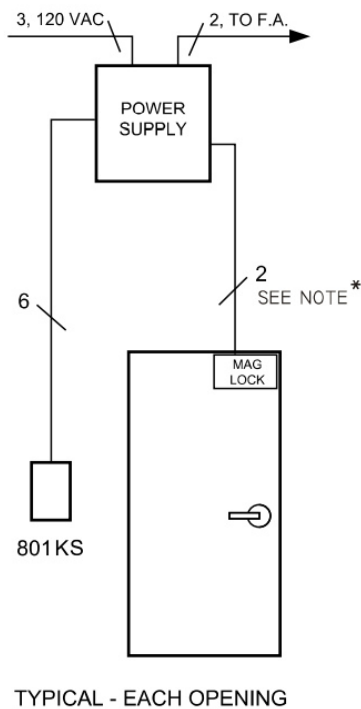
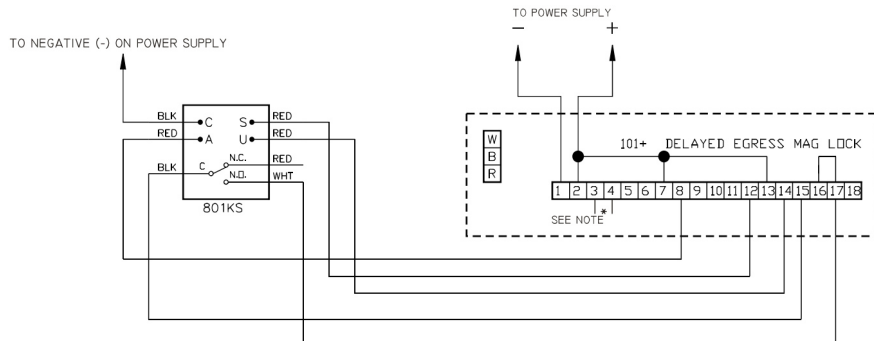
The 801-KS is wired to a magnetic lock delayed egress system. The following is an operation sequence from normal (secure) condition, through an unauthorized egress attempt, to system reset:

Condition:

Door closed and secure
 Unauthorized egress attempt
 After 15 (or 30) second delay
 System reset
 Legal release

801-KS Status

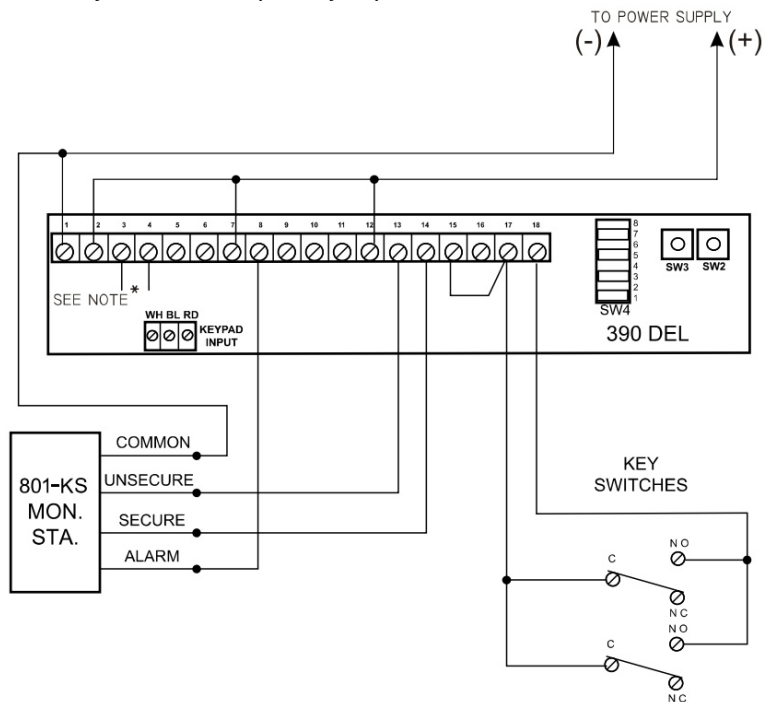
Alarm Silent – Green LED on
 Alarm Sounds – Green & Yellow LED on
 Alarm Sounding – Yellow & Red LED on
 Alarm Silent – Green LED on
 Alarm Silent – Red LED on



RISER FOR GRAPHIC REFERENCE. LOCATE ALL DEVICES PER A-E/G.C/O.R. ADDITIONAL WIRING FOR OTHER DEVICES MAY BE REQUIRED.

NOTE:

Fire alarm connection – for direct connection, terminals 3 & 4 connect to N.C. Dry output contacts (open on alarm). Conductor count to mag changes to four (4). If power supply output is controlled by fire alarm – place jumper between 3 & 4.

**NOTE:**

All low voltage runs – 18 GA. minimum, except as noted. Recommended 2 spares per run. All wiring to comply with all applicable national, state, and local codes.

Customer Service

1-877-671-7011

www.allegion.com/us



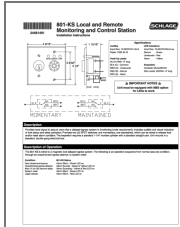
ALLEGION
 © Allegion 2017

Printed in U.S.A,
24481491 Rev. 11/17-d



24481491

Documents / Resources



[ALLEGION 801-KS Local and Remote Monitor Control Station](#) [pdf] Installation Guide
801-KS Local and Remote Monitor Control Station, 801-KS, Local and Remote Monitor Control
Station, Monitor Control Station, Control Station, Station

References

- [User Manual](#)

[Manuals+](#), [Privacy Policy](#)

This website is an independent publication and is neither affiliated with nor endorsed by any of the trademark owners. The "Bluetooth®" word mark and logos are registered trademarks owned by Bluetooth SIG, Inc. The "Wi-Fi®" word mark and logos are registered trademarks owned by the Wi-Fi Alliance. Any use of these marks on this website does not imply any affiliation with or endorsement.