



# ALLEGION 22 Series Rim Exit Device Instruction Manual

[Home](#) » [Allegion](#) » ALLEGION 22 Series Rim Exit Device Instruction Manual 

## Contents

- [1 ALLEGION 22 Series Rim Exit Device Instruction](#)
- [2 22 Series Rim Exit Device](#)
- [3 How to Order](#)
- [4 Parts and Assemblies](#)
- [5 Usage Instructions](#)
- [6 INTRODUCTION](#)
- [7 PART NUMBER AND AVAILABILITY CHANGES](#)
- [8 22 SERIES DEVICE AND TRIM FINISHES](#)
- [9 OUTSIDE TRIM FUNCTIONS](#)
- [10 22-F RIM FIRE DEVICE](#)
- [11 22 RIM PANIC DEVICE BASEPLATE ASSEMBLY](#)
- [12 22 SERIES QEL](#)
- [13 22 SERIES ALK EXIT ALARM KIT](#)
- [14 About Allegion](#)
- [15 Documents / Resources](#)
  - [15.1 References](#)
- [16 Related Posts](#)



**ALLEGION™**

## ALLEGION 22 Series Rim Exit Device Instruction



### 22 Series Rim Exit Device

The 22 Series Rim Exit Device is a hardware device that is used to provide a secure exit from a building. The

device is available in different finishes and functions to suit the needs of different buildings and users.

## How to Order

When ordering replacement parts or assemblies, please provide the following information:

- Part number
- Device type, size, and finish (if applicable)

To find out the name of your local Von Duprin distributor or sales representative, contact Von Duprin Division Allegion at 2720 Tobey Drive, Indianapolis, Indiana 46219 or call (877) 671-7011.

## Parts and Assemblies

The device has replaceable parts and assemblies that are sold separately or as part of a kit or multiple quantity package. The manual contains a listing of these parts and kits. However, due to changes to the product and/or manufacturing process, part numbers and availability can change over time.

### 22 Series Device and Trim Finishes

U.S. Number	BHMA Number	Description
US19	526 622	Powder-Coated Chrome Powder-Coated Matte Black
SP28 SP313	689 695	Powder-Coated Aluminum Powder-Coated Dark Bronze

### Outside Trim Functions

- 230DT\*\*\*
- 230NL\*\*
- 230TP
- 210DT\*\*\*
- 210K
- 110NL\*\*\*\*
- 210NL\*\*
- 230L

### Strikes

- 299 Strike – Standard Single or Double Door Panic Exit Hardware
- 299F Strike Single Door Fire Exit Hardware
- 264 Strike – Single Door Panic Exit Hardware
- 499F Strike – Double Door w/Mullion Fire Exit Hardware
- 1609 Strike Double Door Rim/Vertical Rod Combination (Consult Factory)
- 1410 Strike – Single Door Integral Stop Panic Exit Hardware
- 1606 Strike – Single or Double Door Panic Exit Hardware
- 1439 Strike – Single door Panic Exit Hardware

- 1408 Strike – Double Door Used on 5754 Mullions Panic Exit Hardware

## Usage Instructions

The device is designed to provide a secure exit from a building. The device can be installed on a single or double door and is available in different finishes and functions. To order replacement parts or assemblies, provide the part number and device type, size, and finish (if applicable). Refer to the manual for a listing of replaceable parts and kits. Install the device according to the manufacturer's instructions to ensure proper function and security.

## INTRODUCTION

This manual contains a listing of replaceable parts and assemblies for the 22 Rim Exit Hardware Devices.

## HOW TO ORDER

Some parts are sold separately. Other items are available as part of a kit or multiple quantity package.

**For the best possible service when ordering replacement parts or assemblies, please provide the following information:**

- Part number or assembly number
- Description
- Quantity needed
- Finish desired (if available finished)
- Date of original purchase (if known)

**To find out the name of your local Von Duprin distributor or sales representative, contact:**

- Von Duprin Division
- Allegion
- 2720 Tobey Drive
- Indianapolis, Indiana 46219
- Phone: (877) 671-7011

## PART NUMBER AND AVAILABILITY CHANGES

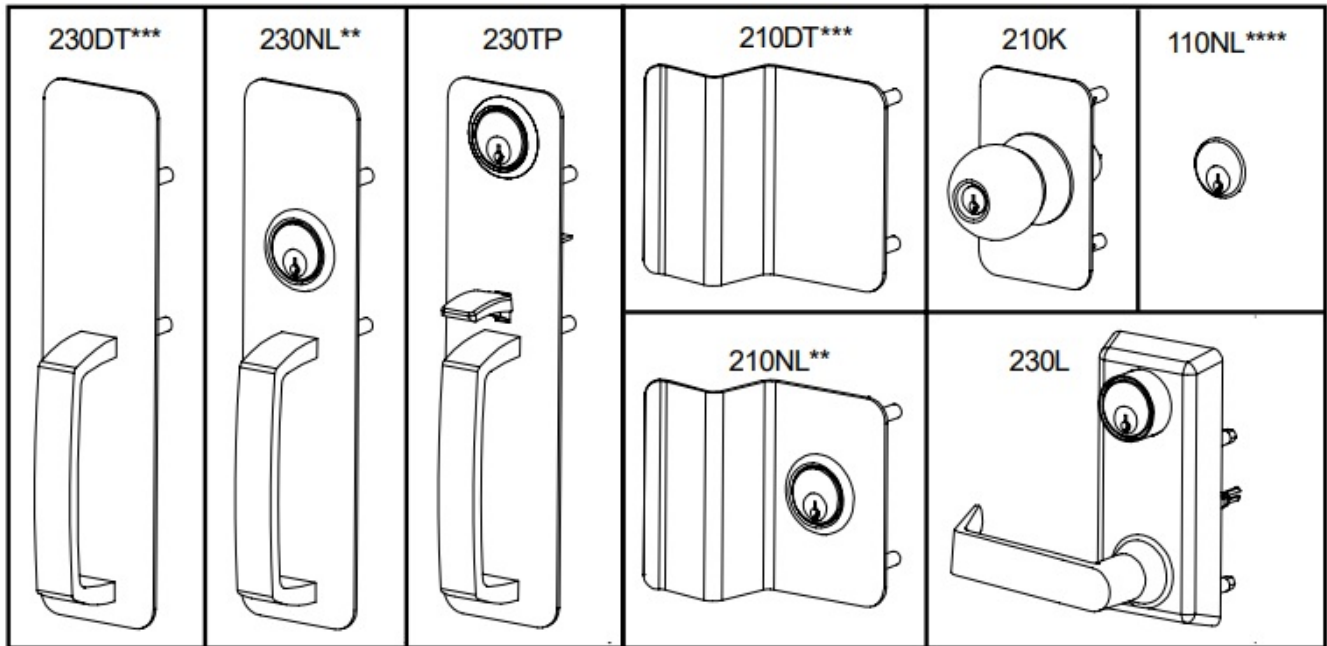
This manual was designed to help illustrate the replacement parts and kits that are available for sale. Because of changes to the product and/or manufacturing process, part numbers and availability can change over time.

## 22 SERIES DEVICE AND TRIM FINISHES

U.S. Number	BHMA Number	Description
- - - -	526	Powder-Coated Chrome
US19	622	Powder-Coated Matte Black

U.S. Number	BHMA Number	Description
SP28	689	Powder-Coated Aluminum
SP313	695	Powder-Coated Dark Bronze

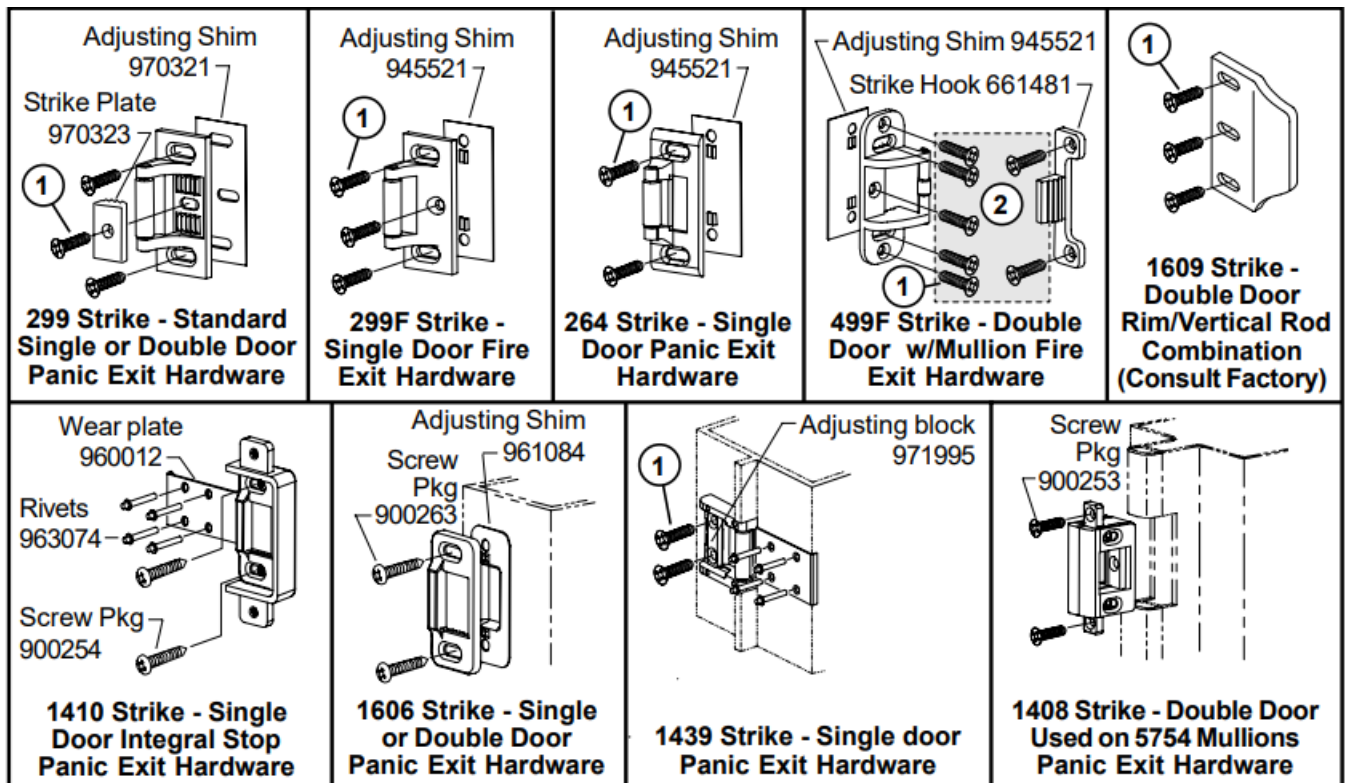
## OUTSIDE TRIM FUNCTIONS

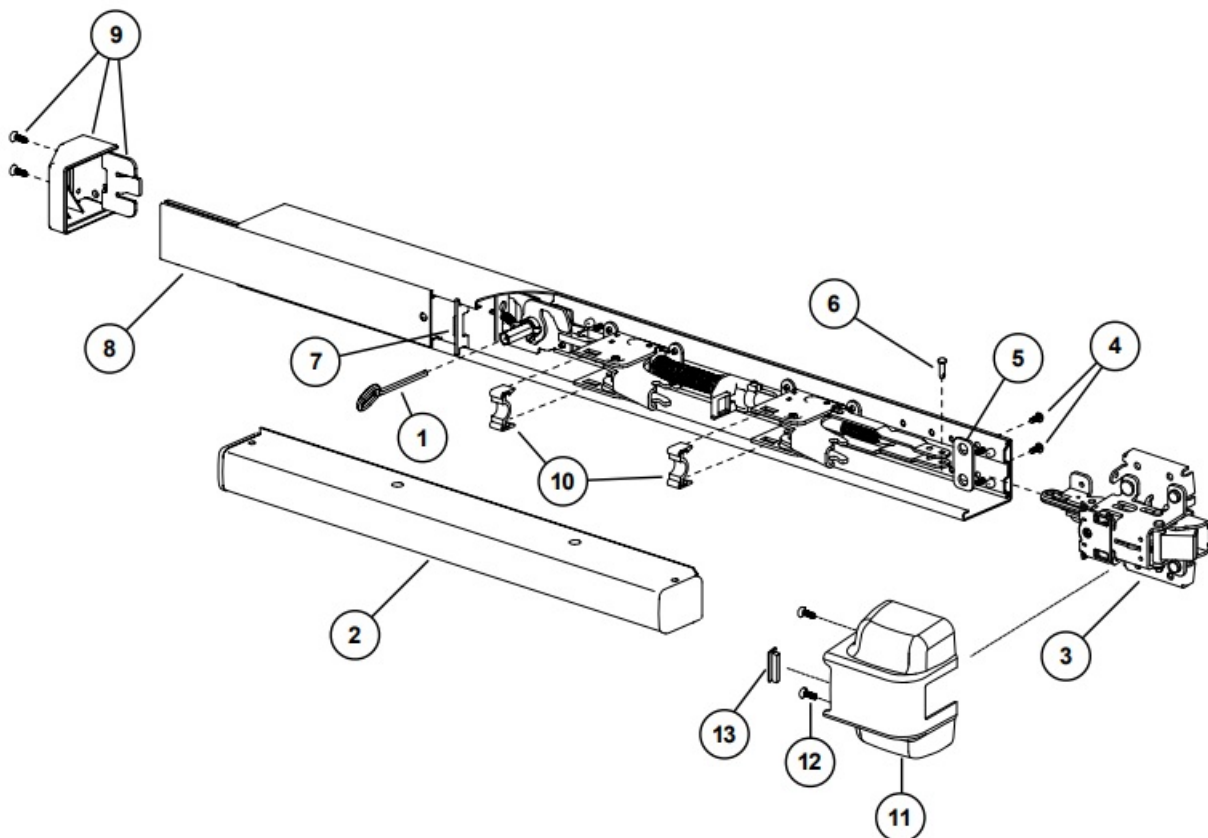


- \* "BE" (Blank Escutcheon) no cylinder used – lever always active
- \*\* "NL" (Night Latch) key retracts latch bolt
- \*\*\* "DT" (Dummy Trim) for pull operation
- \*\*\*\* Optional Pull needs to be added

1. Metal Door Screw Package PKGSRV.1023 (Pkg of 10)
2. 499F Strike Mounting Package 900289 (Pkg of 7)

## STRIKES



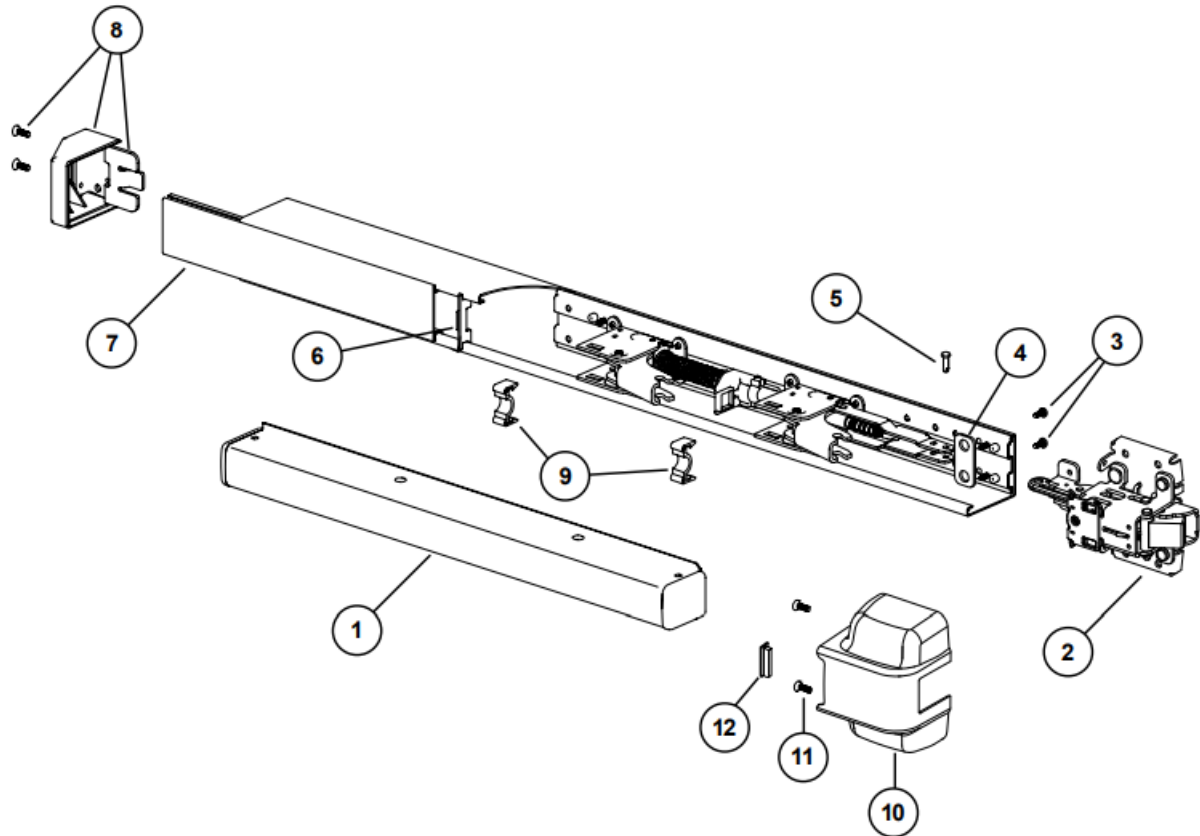


Item No.	Quantity	Part No.	Description	Finish
	1	900392	22 Series Mounting Pkg. (1-3/4 & 2-1/4)	
1	1	090085	227 Dog Key 5/32" Hex (Pkg of 10)	
1	1	090005	227 Dog Key 5/32" Hex (Pkg of 2)	
2	1	*PBKIT	22 Series Push Bar Retrofit Kit - 3' Door	X
2	1	*PBKIT	22 Series Push Bar Retrofit Kit - 4' Door	X
3	1	109012	22/22-F Rim Center Case Less Cover	
4	1	090037	Baseplate Screw (Pkg of 10)	
5	2	47289674	22 Center Case Spacer	
6	1	050529	Control Link Pin	
6	1	090031	Control Link Pin (Pkg of 10)	
7	1	968592	Cover Plate Bearing Insert	
8	1	968595	22/2227 Cover Plate - 3' Dr	X
8	1	968596	22/2227 Cover Plate - 4' Dr	X
9	1	900981	22 End Cap Kit	
9	1	900397	22 Metal End Cap Kit	X
10	1	090048	Baseplate Bearing Strip (Pkg of 2)	
11	1	041174	22/22-F Center Case Cover	X
12	1	090077	22 Series Center Case Cover Screw Pkg/4	
13	1	966268	Cover Bearing Insert	

X in "Finish" column designates finished items; finish must be specified when ordering.

\* To order, specify device type, size, and finish. Example: PBKIT 22 3' SP28

## 22-F RIM FIRE DEVICE



Item No.	Quantity	Part No.	Description	Finish
	1	900392	22 Series Mounting Pkg. (1-3/4 & 2-1/4)	
1	1	*PBKIT	22 Series Push Bar Retrofit Kit - 3' Door	X
1	1	*PBKIT	22 Series Push Bar Retrofit Kit - 4' Door	X
2	1	109012	22/22-F Rim Center Case Less Cover	
3	1	090037	Baseplate Screw (Pkg of 10)	
4	2	47289674	22 Center Case Spacer	
5	1	050529	Control Link Pin	
5	1	090031	Control Link Pin (Pkg of 10)	
6	1	968592	Cover Plate Bearing Insert	
7	1	969127	22/2227-F Cover Plate - 3' Dr	X
7	1	969126	22/2227-F Cover Plate - 4' Dr	X
8	1	900981	22 End Cap Kit	
8	1	900397	22 Metal End Cap Kit	X
9	1	090048	Baseplate Bearing Strip (Pkg of 2)	
10	1	041174	22/22-F Center Case Cover	X
11	1	090077	22 Series Center Case Cover Screw Pkg/4	
12	1	966268	Cover Bearing Insert	

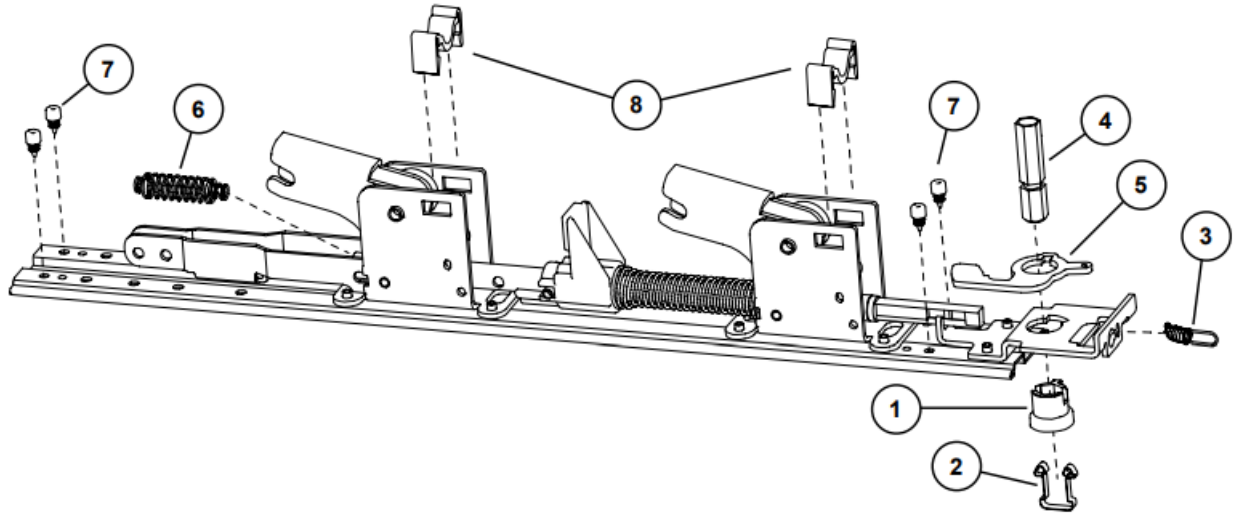
X in "Finish" column designates finished items; finish must be specified when ordering.

\* To order, specify device type, size, and finish. Example: PBKIT 22 3' SP28



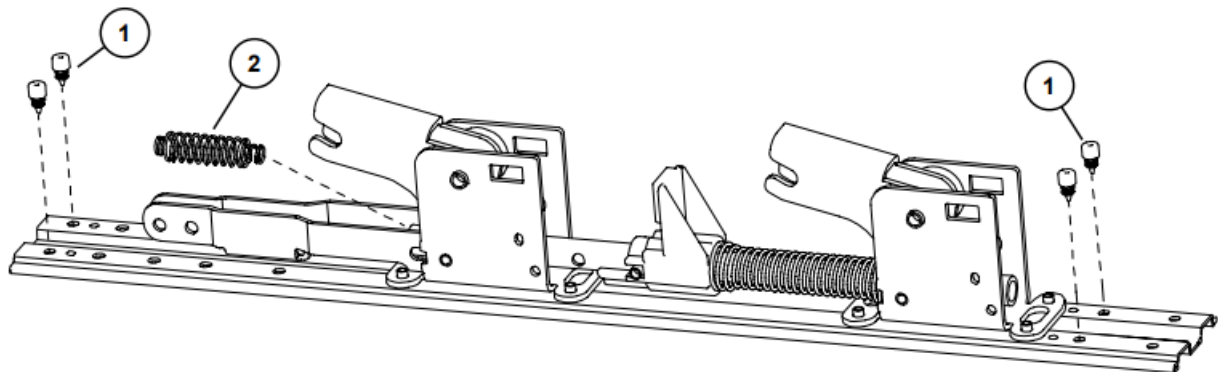
## 22 RIM PANIC DEVICE BASEPLATE ASSEMBLY

Item No.	Quantity	Part No.	Description	Finish
1	1	090043	Dogging adapter (Pkg of 2)	
2	1	090042	Dogging adapter spring (Pkg of 2)	
3	1	090041	Dogging spring (Pkg of 2)	
4	1	090040	Hex dogging shaft (Pkg of 2)	
5	1	090044	Dogging hook (Pkg of 2)	
6	1	090039	Latch return spring (Pkg of 10)	
7	4	090038	Rubber bumper (Pkg of 4)	
8	2	090048	Baseplate Bearing Strip (Pkg of 2)	



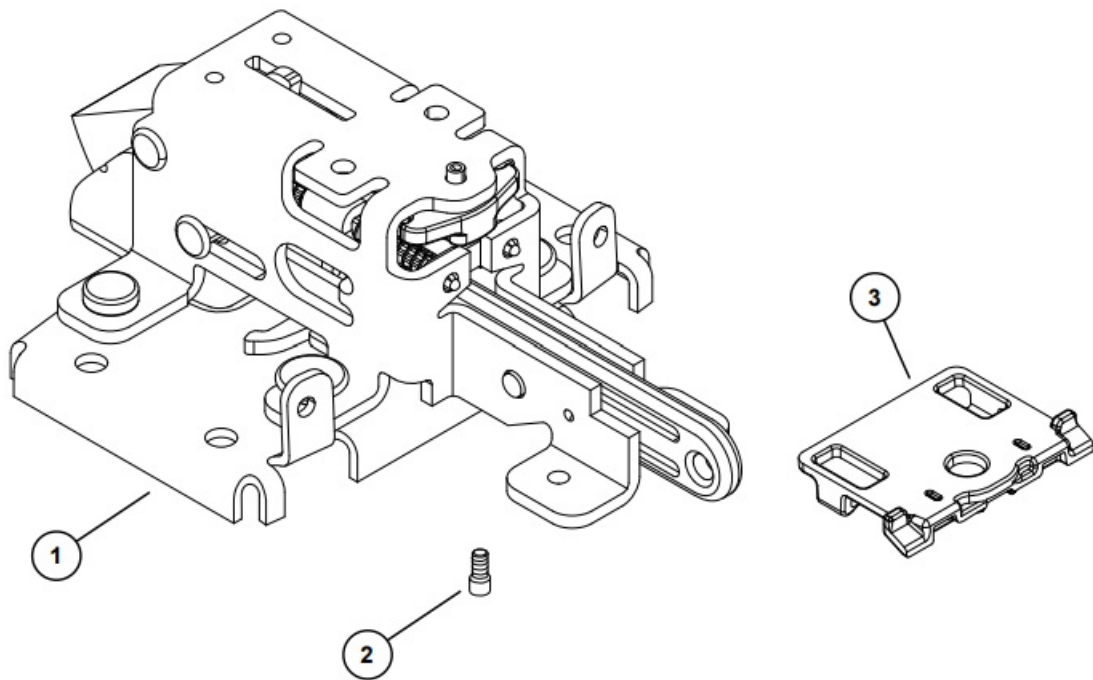
## 22-F FIRE DEVICE BASEPLATE ASSEMBLY

Item No.	Quantity	Part No.	Description	Finish
1	4	090038	Rubber bumper (Pkg of 4)	
2	1	090039	Latch return spring (Pkg of 10)	



## 22 PANIC & 22-F FIRE DEVICE CENTER CASE ASSEMBLY

Item No.	Quantity	Part No.	Description	Finish
1	1	109012	22/22-F Rim Center Case Less Cover	
2	1	090074	NL Drive Screw (Pkg of 10)	
3	1	965409	22/2227 Pushbar Stop	



## 22 SERIES QEL

(QUIET ELECTRIC LATCH)

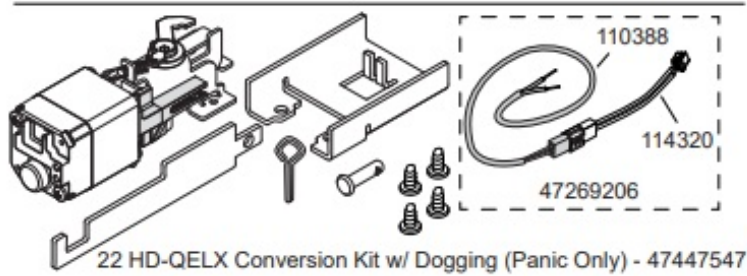
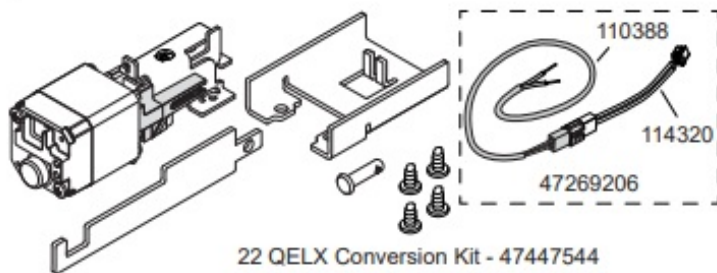
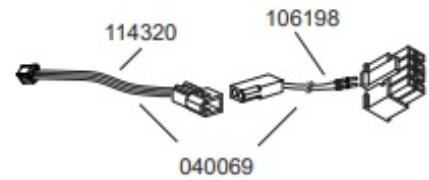
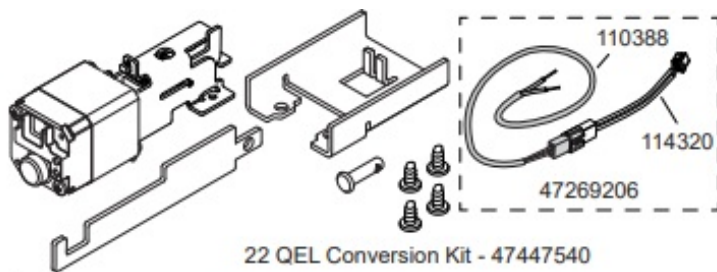
### QEL KITS

Part No.	Description	Finish
47447540	22 QEL Conversion Kit	
47447541	22 HD-QEL Conversion Kit w/ Dogging	
47447544	22 QELX Conversion Kit	
47447547	22 HD-QELX Conversion Kit w/ Dogging	

### QEL REPLACEMENT PARTS

Part No.	Description	Finish
114320	QEL Motor Cable	
47269206	QEL Motor Cable w/ 6' Harness	
040069	QEL Motor Cable w/ QEL CON Adapter Harness	
106198	QEL CON Adapter Harness	
110388	EL Cable Assembly	

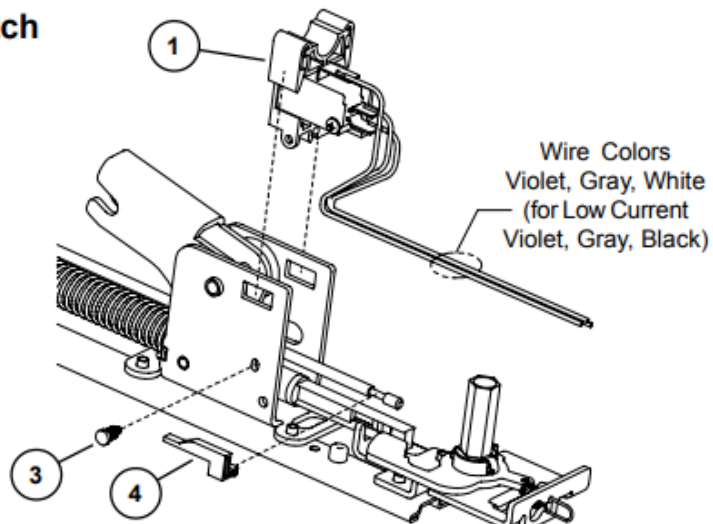




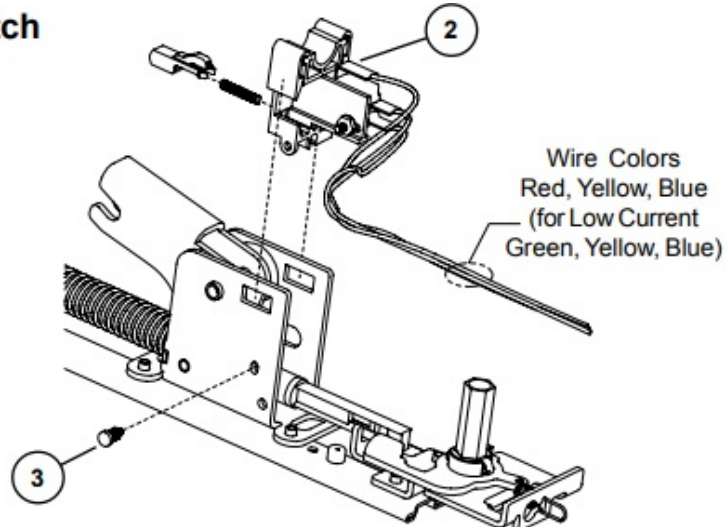
## 22 SERIES LX (LATCH BOLT MONITOR) & RX (REQUEST TO EXIT) OPTIONS

Item No.	Quantity	Part No.	Description	Finish
1	1	050254	LX Switch Kit 3' Device	
1	1	050255	LX Switch Kit 4' Device	
1	1	050283	LX-LC (Low Current) Switch Kit 3' Device	
1	1	050285	LX-LC (Low Current) Switch Kit 4' Device	
2	1	050251	RX Switch Kit	
2	1	050281	RX-LC (Low Current) Switch Kit	
3	1	090099	Pine Tree Clip (Pkg of 10)	
4	1	971091	LX Actuator	

## LX Switch



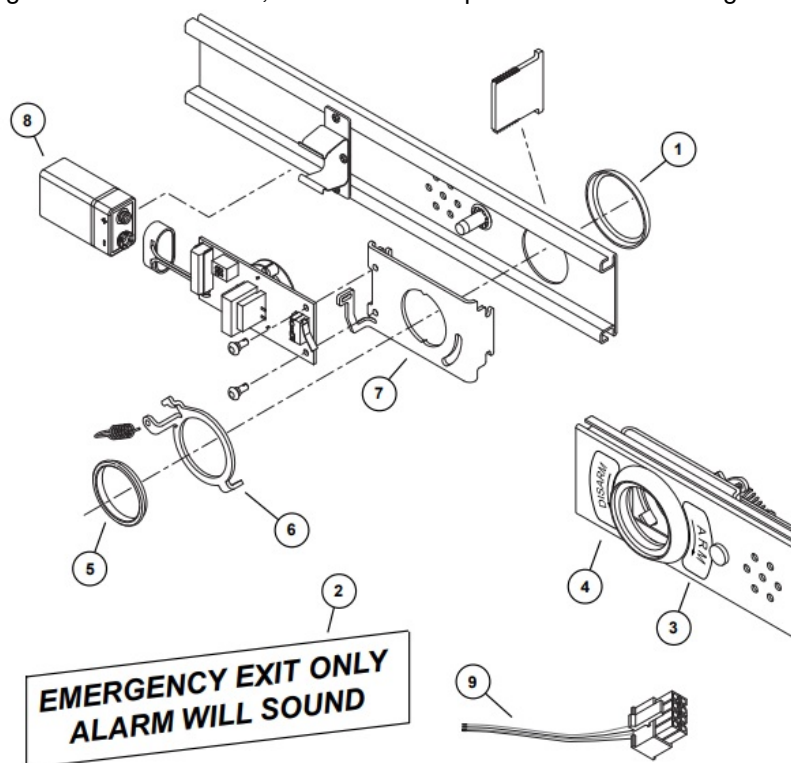
## RX Switch



## 22 SERIES ALK EXIT ALARM KIT

Item No.	Quantity	Part No.	Description	Finish
1	1	967704	ALK Cylinder Collar - 22	X
2	1	SIGN-1	ALK Sign	
3	1	969349	ALK Arming Label	
4	1	969350	ALK Disarming Label	
5	1	969354	ALK Retainer Nut	
6	1	47268870	ALK Switch Actuator	
7	1	47270435	ALK Cylinder Bracket	
8	1	990637	ALK Battery	
9	1	106182	ALK CON Adapter Harness	

X in "Finish" column designates finished items; finish must be specified when ordering



### About Allegion

Allegion (NYSE: ALLE) creates peace of mind by pioneering safety and security. As a \$2 billion provider of security solutions for homes and businesses, Allegion employs more than 9,500 people and sells products in more than 130 countries across the world. Allegion comprises 25 global brands, including strategic brands CISA®, Interflex®, LCN®, Schlage® and Von Duprin®. For more, visit [www.allegion.com](http://www.allegion.com).


*aptiQ* ■ LCN ■ **SCHLAGE** ■ STEELCRAFT ■ VON DUPRIN

© 2022 Allegion  
108728, Rev. 05/22  
[www.allegion.com/us](http://www.allegion.com/us)

### Documents / Resources

 	<p><a href="#">ALLEGION 22 Series Rim Exit Device</a> [pdf] Instruction Manual</p> <p>22 Series, 22 Series Rim Exit Device, Rim Exit Device, Exit Device, Device</p>
---	--

References

-  [Allegion | Seamless Access and a Safer World](#)
-  [Allegion | US - Commercial Safety & Security](#)