


ipay50
Tablet PC



ALLDOCUBE iplay50 Tablet PC User Guide

[Home](#) » [ALLDOCUBE](#) » ALLDOCUBE iplay50 Tablet PC User Guide 

Contents

- [1 ALLDOCUBE iplay50 Tablet PC](#)
- [2 Product Usage Instructions](#)
- [3 FAQ](#)
- [4 About the device](#)
- [5 Specifications](#)
- [6 FCC STATEMENT](#)
- [7 Environmental protection claims](#)
- [8 Documents / Resources](#)
 - [8.1 References](#)



ALLDOCUBE iplay50 Tablet PC



Product Usage Instructions

- The device features a UNISOC T618 CPU with various RAM+ROM configurations.
- It runs on Android 12 OS and offers a high-resolution display, dual SIM-card support, and a long-lasting battery.

Charging the Device

- To charge the device, connect the Type-C charger to the port located on the device.
- Make sure to use the provided charger for optimal charging performance.

Turning the Device On/Off

- To turn on the device, press and hold the Power button until the screen lights up. To turn it off, press and hold the Power button and follow the on-screen prompts to power off.

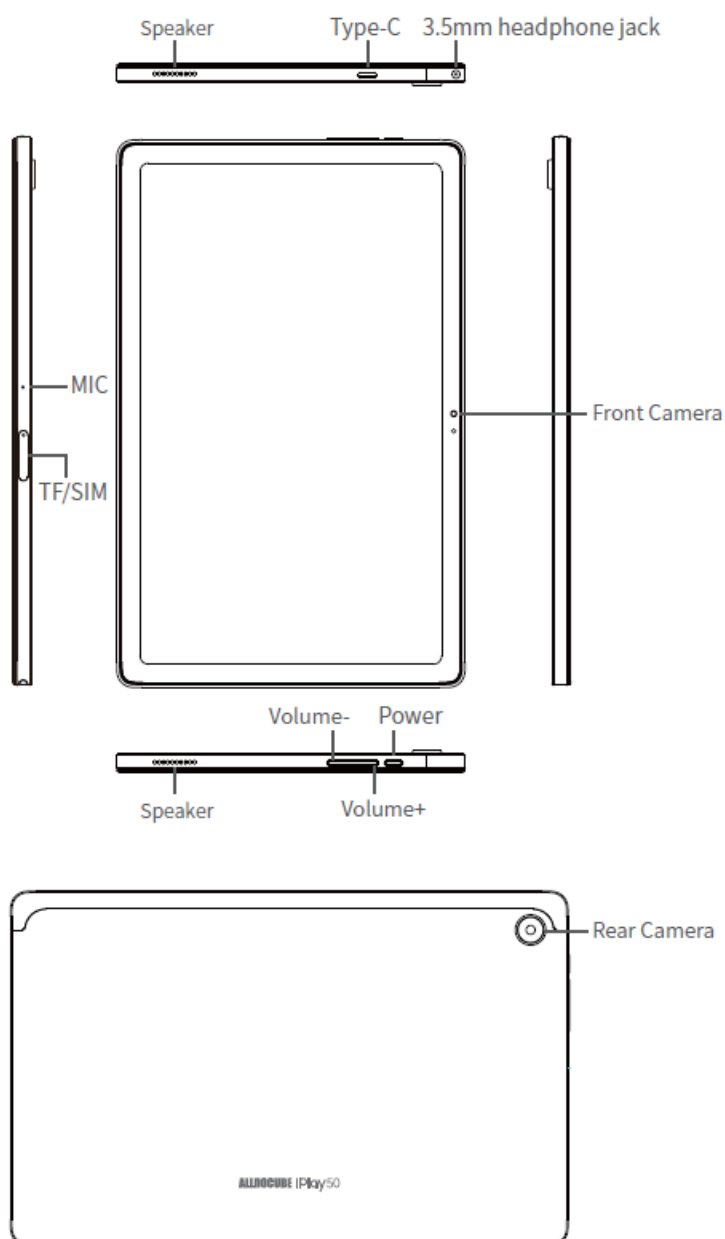
Taking Photos

- To take photos, open the camera app, frame your shot using the touch screen, and press the on-screen capture button.
- You can switch between front and rear cameras for different shots.

FAQ

- **Q:** How do I check the available storage on the device?
- **A:** You can check the available storage by going to Settings > Storage on the device. It will show you the total storage capacity and how much is currently in use.
- **Q:** Can I expand the storage capacity of the device?
- **A:** Yes, you can expand the storage capacity by inserting a compatible TF card into the designated slot on the device. This will allow you to store more files and data.

About the device



Specifications

- **CPU:** UNISOC T618
- **RAM+ROM:** 4GB+64GB/6GB+64GB/6GB+128GB According to the listed version
- **Light sensor:** Yes

- **BT:** 5.0
- **GPS:** Yes
- **WiFi:** 802.11b/g/n/ac (2.4GHz+5GHz)
- **TF-card:** Yes
- **Display:** 10.36" 1200*2000, in cell
- **Touch:** 10-point capacitive touchscreen
- **Battery:** 3.8V/6000mAh
- **MIC:** Yes
- **Speaker:** Yes
- **G-sensor:** Yes
- **Gyroscope:** No
- **Hall switch:** No
- **SIM card:** Dual SIM
- **OS:** Android 12
- **Camera:** Front 5MP+Rear 8MP
- **Battery life:** Standby: Local 1080P video playback: 6 hours.

Note: This is laboratory test data.

The actual battery life will vary slightly depending on the environment and source used by the customer.

Notice: All the pictures in this manual are for reference only.

Specifications and design can change without notice. Part of the stated storage is used by the system, so usable storage is smaller.

Android is a trademark of Google LLC.

FCC STATEMENT

This equipment has been tested and found to comply with the limits for a Class B digital device, according to part 15 of the FCC Rules. These limits are designed to provide reasonable protection against harmful interference in a residential installation. This equipment generates, uses, and can radiate radio frequency energy and, if not installed and used under the instructions, may cause harmful interference to radio communications. However, there is no guarantee that interference will not occur in a particular installation. If this equipment does cause harmful interference to radio or television reception, which can be determined by turning the equipment off and on, the user is encouraged to try to correct the interference by one or more of the following measures:

- Reorient or relocate the receiving antenna.
- Increase the separation between the equipment and the receiver.
- Connect the equipment to an outlet on a circuit different from that to which the receiver is connected.
- Consult the dealer or an experienced radio/TV technician for help.

Caution: Any changes or modifications to this device not explicitly approved by the manufacturer could void your authority to operate this equipment.

This device complies with part 15 of the FCC Rules.

Operation is subject to the following two conditions:

1. This device may not cause harmful interference, and
2. this device must accept any interference received, including interference that may cause undesired operation.

The device complies with RF specifications when the device is used at 0mm from your body.

“To comply with FCC RF exposure compliance requirements, this grant applies to only mobile configurations. The antennas used for this transmitter must be installed to provide a separation distance of at least 20 cm from all persons and must not be co-located or operating in conjunction with any other antenna or transmitter.”

Environmental protection claims

Hazardous Substances Table

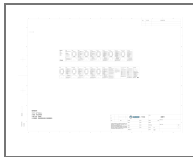
Part Name	Main board	Display	Plastic	Metal	Battery	Accessory
Plumbum (Pb)	○	○	○	○	○	○
Mercury (Hg)	○	○	○	○	○	○
Cadmium (Cd)	○	○	○	○	○	○
Hexavalent chromiun (Cr6+)	○	○	○	○	○	○
Polybrominated biphenys (PBB)	○	○	○	○	○	○
Polybrominated biphenyls(PBDE)	○	○	○	○	○	○
Butyl Benzyl Phthalate(BBP)	○	○	○	○	○	○
Dibutyl Phthalate(DBP)	○	○	○	○	○	○
Diisobutyl Phthalate(DIBP)	○	○	○	○	○	○
Diethylhexyl Phthalate (DEHP)	○	○	○	○	○	○
Environment Friendly Use Period(EFUP)	10	10	10	10	5	5

- : Indicates that this hazardous substance contained in all homogenous materials of this part is below the limit requirements GB/T 26572-2011
- The use period is valid only when the product is operated under the conditions defined in the product manual.

THESE DRAWINGS AND SPECIFICATIONS ARE THE PROPERTY OF SHENZHEN ALLDOCUBE TECHNOLOGY AND SCIENCE CO., LTD.

AND SHALL NOT BE REPRODUCED COPIED OR USED IN ANY MANNER WITHOUT THE PRIOR WRITTEN CONSENT OF SHENZHEN ALLDOCUBE TECHNOLOGY AND SCIENCE CO., LTD. WWW.ALDOCUBE.COM

Documents / Resources



[ALLDOCUBE iplay50 Tablet PC](#) [pdf] User Guide
2A3J2-CUL3JT, 2A3J2CUL3JT, cul3jt, iplay50 Tablet PC, iplay50, Tablet PC, PC

References

- [User Manual](#)

Manuals+, Privacy Policy

This website is an independent publication and is neither affiliated with nor endorsed by any of the trademark owners. The "Bluetooth®" word mark and logos are registered trademarks owned by Bluetooth SIG, Inc. The "Wi-Fi®" word mark and logos are registered trademarks owned by the Wi-Fi Alliance. Any use of these marks on this website does not imply any affiliation with or endorsement.