



AlivePixel xtool D1 Series Drag Chain Kit Instruction Manual

[Home](#) » [AlivePixel](#) » AlivePixel xtool D1 Series Drag Chain Kit Instruction Manual 

Contents

- [1 AlivePixel tool D1 Series Drag Chain Kit](#)
- [2 PART LIST](#)
- [3 Mounting Hardware Carrier Bracket \(3 parts\)](#)
- [4 IMPORTANT](#)
- [5 Final Touches](#)
- [6 Documents / Resources](#)
- [7 Related Posts](#)



AlivePixel tool D1 Series Drag Chain Kit

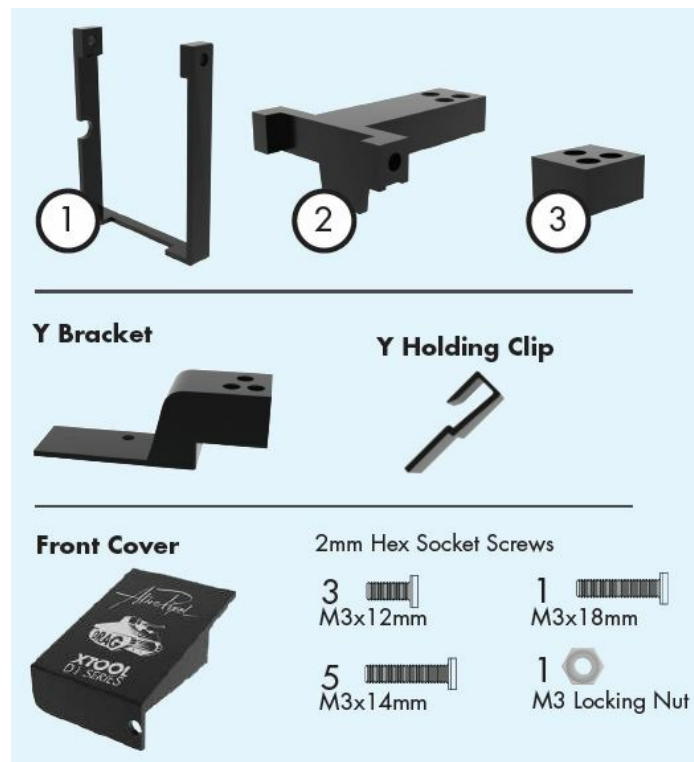


PART LIST

- Carriage Bracket (3 parts)
 - Y Bracket
- Y Holding Clip
- 3 – M3x12mm
- 5 – M3x14mm
- 1 – M3x18mm
- Locking Nut
- Front Cover
- Laser Module Cable
- X Stepper Motor Cable
- Air Hose

Mounting Hardware

Carrier Bracket (3 parts)



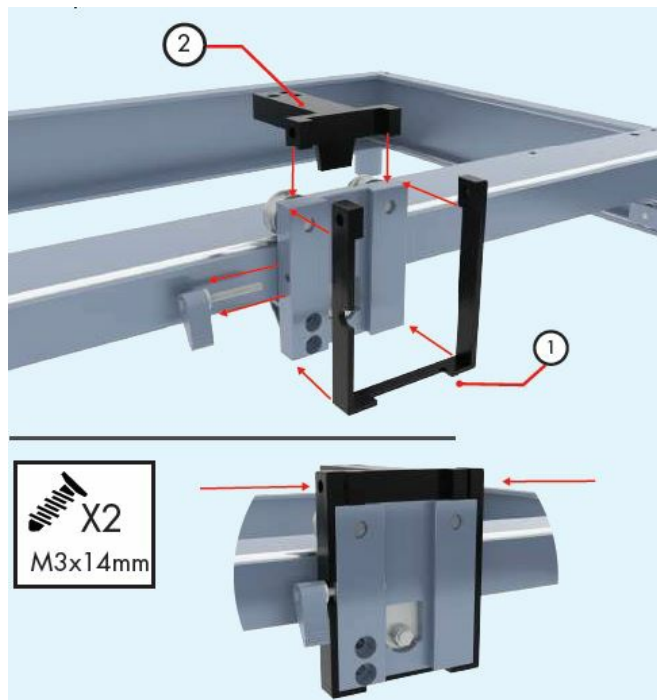
IMPORTANT

WARNING: This is considered a mod to your machine and may void the warranty. AlivePixel is not responsible for any damage during the installation or operation of your Xtool Laser. Make sure that the machine is off and the power cord has been disconnected from your Xtool. Remove your Laser module, disconnect the main cable, and remove all cables except from the Y stepper motor to have a clean working area.

STEP 1

Carrier Bracket

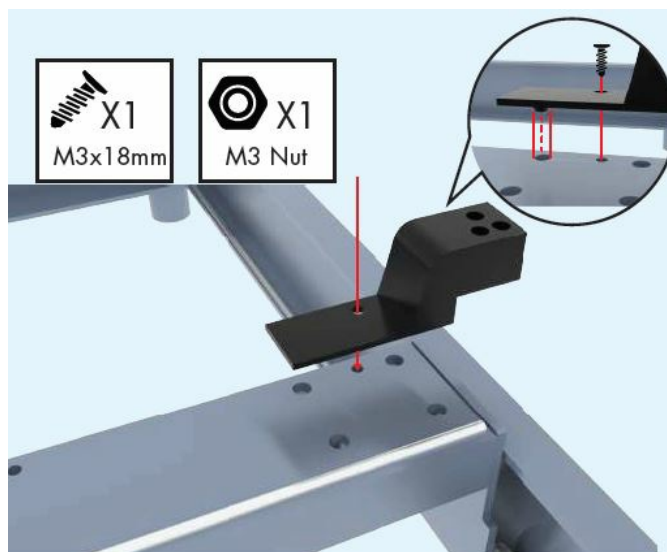
Take care to clean your laser before installation. Start with parts number 1 and 2 of the carrier bracket. Using two M3x14mm screws (included) attach part number 2 to number 1, There should be a gap on each side to make sure is centered. Place the ratchet screw (side screw) back in place.



STEP 2

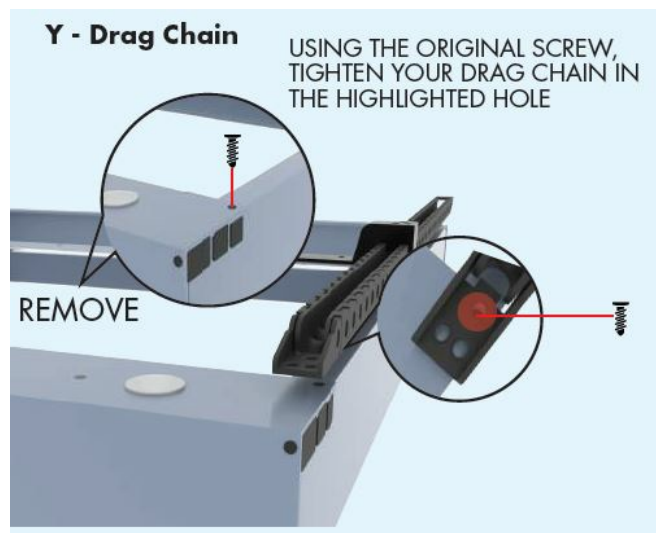
Y – Bracket

Using provided M3x18mm screw and locking nut, secure the bracket as shown below. DO NOT TIGHTEN THE NUT ON THIS PART YET



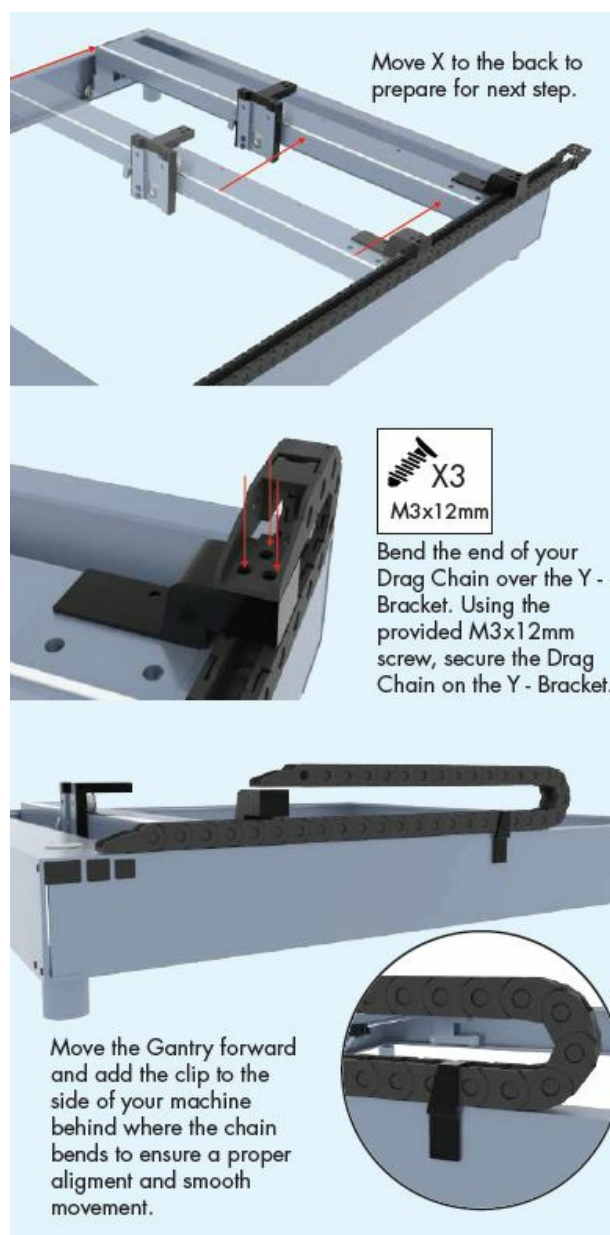
STEP 3 Y – Drag Chain

USING THE ORIGINAL SCREW, TIGHTEN YOUR DRAG CHAIN IN THE HIGHLIGHTED HOLE



STEP 4

Attaching Drag Chain to Y – Bracket



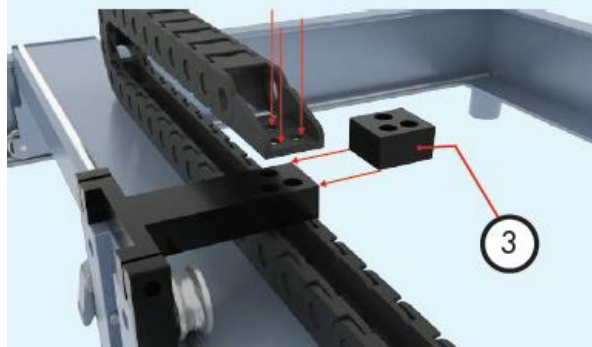
STEP 5

Attaching Drag Chain to Y – Bracket Remove the screw used in Step 2. Set the X Drag Chain in place. Once there, make sure the screw and nut are secured and tight.

Remove the screw used in Step 2. Set the X Drag Chain in place. Once there, make sure the screw and nut are secured and tight.



Bend the end of your Drag Chain over the carrier bracket, adding part number 3. Using the provided M3x14mm screw, secure the Drag Chain on the carrier.



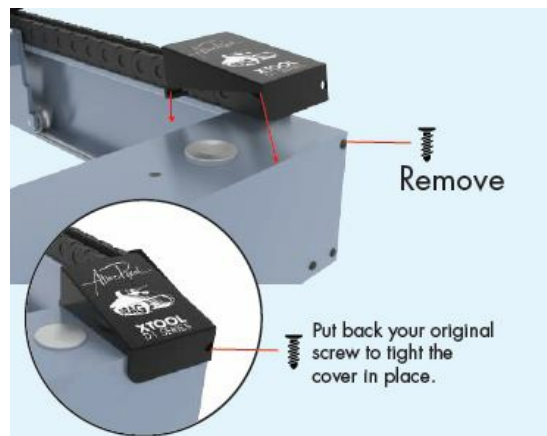
Important

Use the spacer to properly level and attach the X Drag Chain to the laser carrier.

STEP 6

Front Cover.

The front cover adds extra protection for cables that need to bend and connect to the mainboard. Remove the front screw and place the cover by sliding it from the back to ensure the safety clip grips the frame.



Final Touches

At this point, everything is set and ready. All you need to do is connect your cables on the mainboard, connect the stepper motor, and add your laser module back to your carrier. It is a good idea to first test mobility with your hands and also run a slow test first with your laser software. Take your time to get familiar with your new setup. Clean your drag chain with compressed air from a can or air compressor. Thank you for your support Daniel G.

Documents / Resources



[AlivePixel xtool D1 Series Drag Chain Kit](#) [pdf] Instruction Manual
xtool D1 Series Drag Chain Kit, xtool D1 Series, Drag Chain Kit, Chain Kit

Manuals+.