




ALINCO EBC-6 Mobile Bracket Instructions

[Home](#) » [ALINCO](#) » ALINCO EBC-6 Mobile Bracket Instructions 

ALINCO EBC-6 Mobile Bracket Instructions



Contents

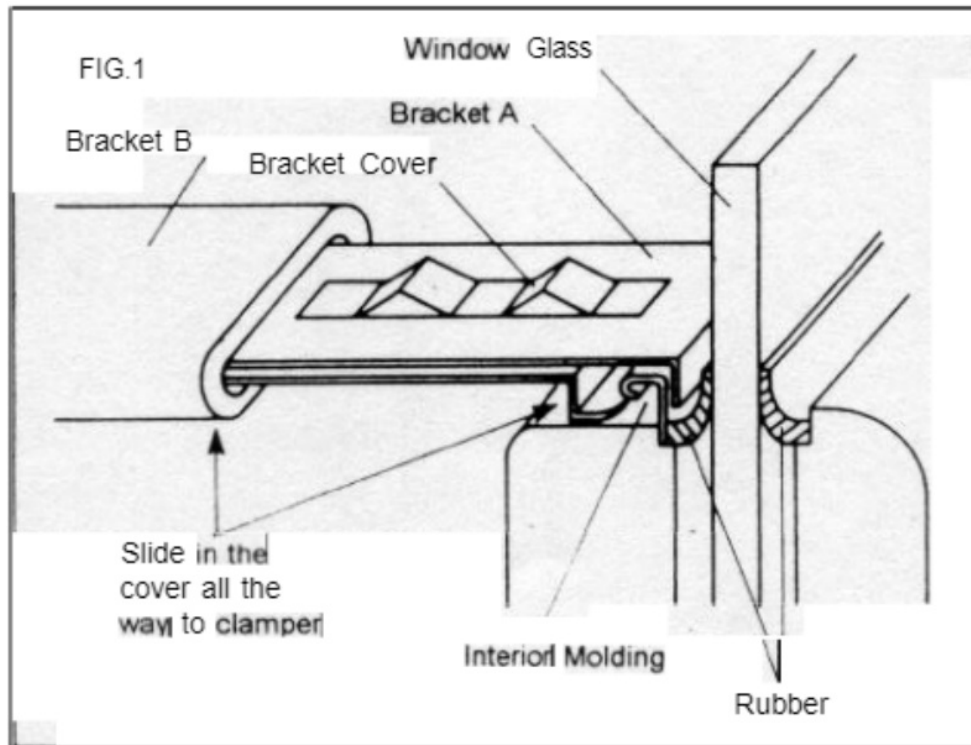
- [1 OVERVIEW](#)
- [2 Documents / Resources](#)
- [3 Related Posts](#)

OVERVIEW

There are two ways to affix the EBC-6 to your car window. See interior molding of your car window to determine which method is best for you.

Method 1

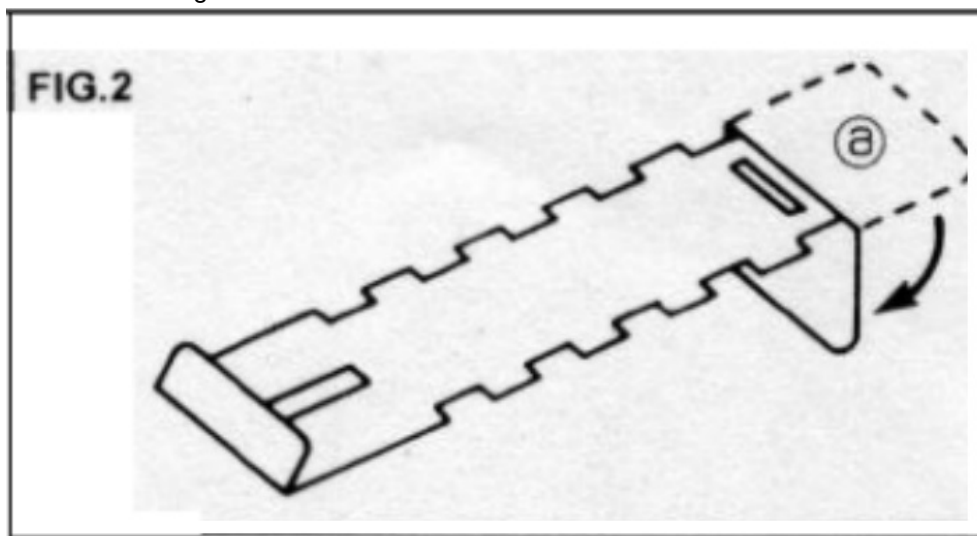
The EBC-6 clamps to the interior window molding using bracket-A from the top and bracket-B from the bottom (see FIG.1).



Bracket-A should be hooked over the interior molding while bracket-B should be slid in between the molding and the door panel. Clamp tightly. Slide in the bracketcover all the way to the clamber of bracket-A and bend the bracket along the curvature of the door panel. Hook the radio-hanger to the grooves of bracket-A (see FIG.4). The bracket-cover may be cut to a desired length for best operating position.

Method 2

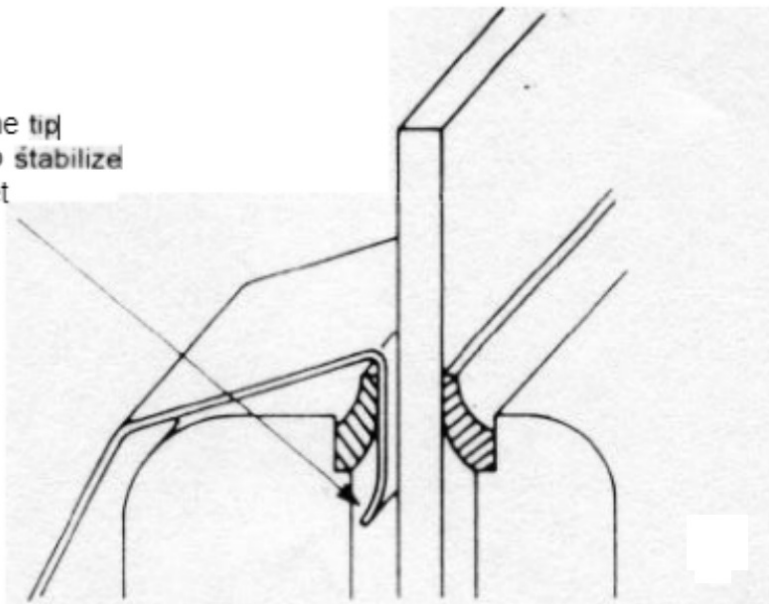
The EBC-6 hangs bracket-A to the window slit. First fold bracket-A about 1.5 inches from the flat end (see FIG.2).



Insert the folded end into the window slit (see FIG.3).

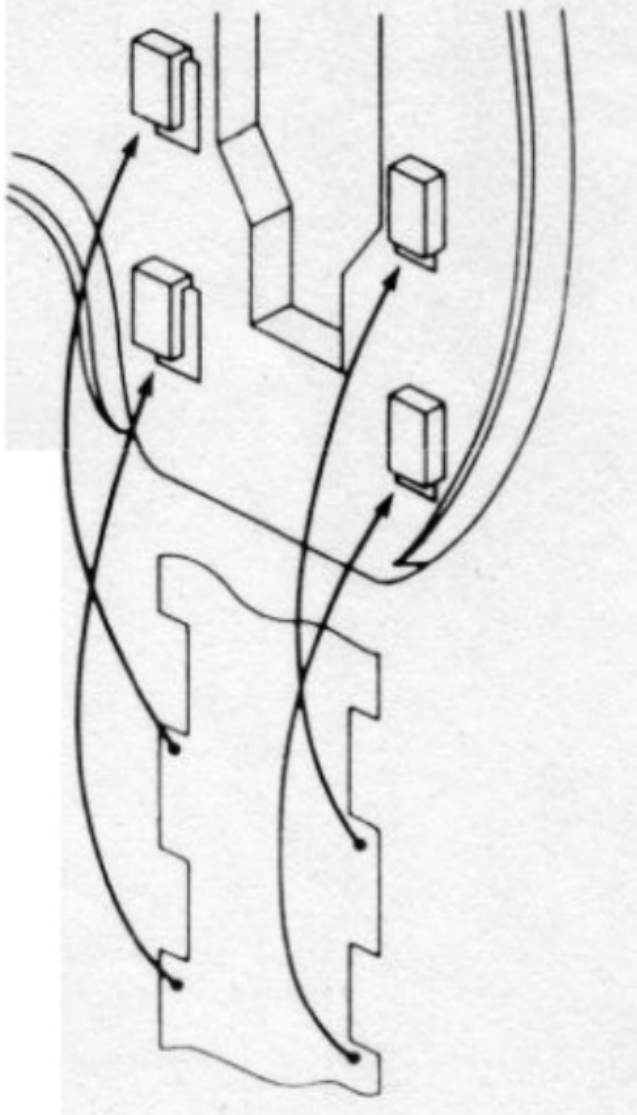
FIG.3

Bending the tip
would help stabilize
the bracket



Slide in the bracket cover and bend the bracket along the curvature of the door panel. Hook the radilhanger to the groves of bracket-A (see FIG.4).

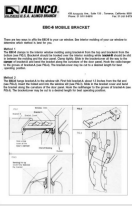
FIG.4



The bracket cover may be cut to a desired length for best operating position.



Documents / Resources

	<p>ALINCO EBC-6 Mobile Bracket [pdf] Instructions EBC-6, EBC-6 Mobile Bracket, Mobile Bracket, Bracket</p>
---	--

Manuals+