



**Contents** [ [hide](#) ]

- [1 Align iTeroEd Lumina Scanner](#)
- [2 Specifications](#)
- [3 Encountering challenging scanning scenarios?](#)
- [4 Flexible scanning distance technique](#)
- [5 Incisal edge technique](#)
- [6 Terminal molar technique](#)
- [7 Documents / Resources](#)
  - [7.1 References](#)



## Align iTeroEd Lumina Scanner



## Specifications

- Product: iTero Lumina Scanner
- Usage: Dental scanning device
- Features: Flexible scanning distance, Incisal edge technique, Terminal molar technique
- Support: Ensures consistent, high-quality scans for precise orthodontic appliance production

## Encountering challenging scanning scenarios?

This guide provides targeted techniques to address three common scanning scenarios that may arise when using the iTero Lumina scanner with different patient anatomies and clinical situations. Use these to ensure consistent, high-quality scans that support precise orthodontic appliance production.

### Flexible scanning distance technique

#### Why?

Varying your scanning distance gives you flexibility to capture different areas effectively. For example, use distanced scanning to capture multiple teeth at once, and close scanning for a detailed view of crowding at the anterior teeth.



## How?

Close scanning: Position the wand near or touching the teeth.

- Best for detailed capture of specific areas.
- Useful in anterior regions.
- Distanced scanning: Hold the wand slightly away from the teeth.
- Captures a wider field of view.
- Useful in hard-to-reach posterior regions.

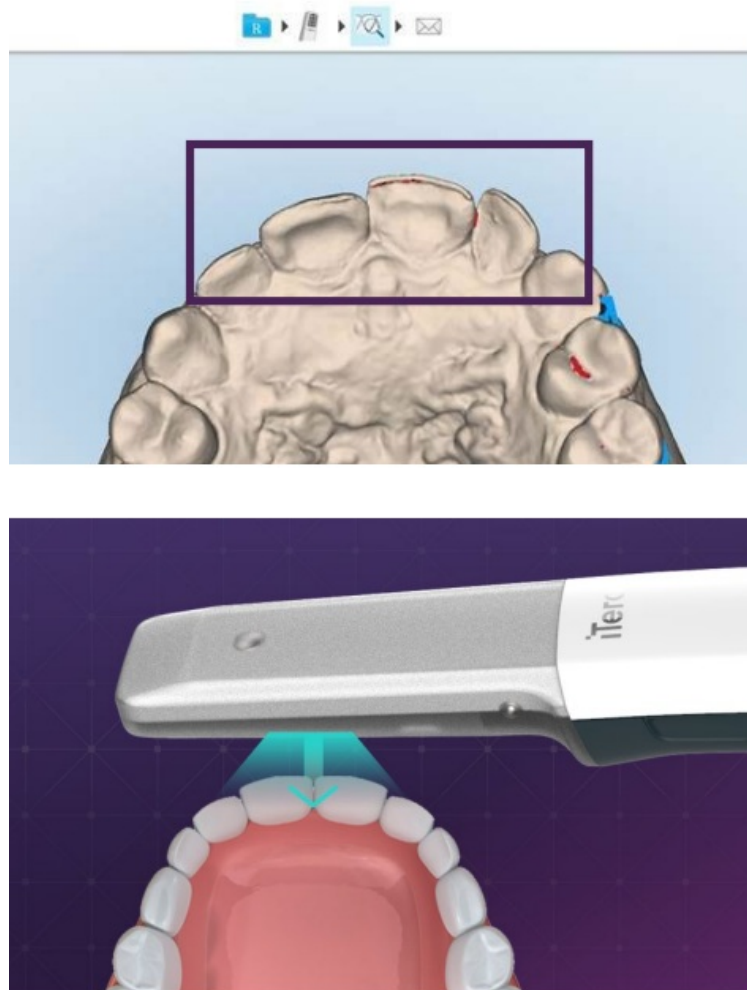
## When?

Choose distance based on area accessibility, patient comfort, and personal preference.

## Incisal edge technique

## Why?

A complete and accurate scan of the incisal edge will help to prevent distortion of the anterior teeth, which is crucial for an accurate fit of an appliance.



## How?

- Focus on the incisal edge area and hover the wand; proceed with a twist technique.
- Switch to monochrome view in post-processing to verify comprehensive incisal edge capture.

## Terminal molar technique

### Why?

The following three techniques can be used to navigate anatomical challenges, such as limited mouth opening and low cheek tissue elasticity, when capturing the distal of the molars.



## Terminal molar technique (cont.)

### How?

Rocking motion technique



- Position the wand tip above the occlusal surface of the terminal molar.
- Rock the wand base away and toward
- The patient needs to capture the distal molar.
- This technique may be challenging for patients with restricted mouth openings.

## Buccal roll and tilt techniques

- Keep the wand steady and parallel to the dental arch or cheek.
- Slide or tilt the wand tip toward the cheek with a slight rolling motion toward the buccal and lingual surfaces.
- Slide or tilt the wand tip toward the cheek to capture buccal surfaces.
- Instruct the patient to move their mandible toward the same side you are trying to capture.
- This technique is recommended for patients with low cheek tissue elasticity.

## Palatal capture technique



- Use the depth of the palate to capture distal anatomy.
- Position the wand at a 45-degree angle for maximum distal capture.
- This technique may be challenging for patients with restricted mouth openings.

2025 Align Technology, Inc., Align, Invisalign, and iTero are trademarks of Align Technology, Inc.

## Documents / Resources



## [Align iTeroEd Lumina Scanner \[pdf\]](#) User Guide

iTeroEd, iTeroEd Lumina Scanner, iTeroEd, Lumina Scanner

## References

- [User Manual](#)

📄 Align, iTeroEd, iTeroEd Lumina Scanner, Lumina

📁 align Scanner

## Leave a comment

Your email address will not be published. Required fields are marked \*

Comment \*

Name

Email

Website

☐ Save my name, email, and website in this browser for the next time I comment.

**Post Comment**

**Search:**

e.g. whirlpool wrf535swhz

**Search**

[Manuals+](#) | [Upload](#) | [Deep Search](#) | [Privacy Policy](#) | [@manuals.plus](#) | [YouTube](#)

This website is an independent publication and is neither affiliated with nor endorsed by any of the trademark owners. The "Bluetooth®" word mark and logos are registered trademarks owned by Bluetooth SIG, Inc. The "Wi-Fi®" word mark and logos are registered trademarks owned by the Wi-Fi Alliance. Any use of these marks on this website does not imply any affiliation with or endorsement.