



AlgoForce E1500 Pulse Induction Metal Detector User Guide

[Home](#) » [AlgoForce](#) » AlgoForce E1500 Pulse Induction Metal Detector User Guide 

Contents

- [1 AlgoForce E1500 Pulse Induction Metal Detector](#)
- [2 Power On](#)
- [3 Factory Reset \(if necessary\)](#)
- [4 Calibrate Coil \(if installing a new coil\)](#)
- [5 Product Overview](#)
- [6 Button Functions](#)
- [7 Assembly](#)
- [8 Documents / Resources](#)
 - [8.1 References](#)



AlgoForce E1500 Pulse Induction Metal Detector



Press Vol/Vibration buttons to modify Audio Volume. Hold Vol/Vibration buttons to adjust Vibration. Press the Backlight/Theme button to adjust the backlight. Hold the Backlight/Theme button to switch between dark and light display themes. Use the Minus and buttons to modify Sensitivity. To adjust other settings:

1. Press Return/Auto FS in the Main Detection UI to access the menu.
2. Navigate with Left/Pinpoint or Right/Auto GB.
3. Modify selected setting with Minus or Plus.
4. Press Return/Auto FS to go back to the Main Detection UI.

Power On

Connect the power bank to the control box and turn it on. To power the detector, hold the Power On/Off button for 3 seconds, then release. Repeat to turn it off.

Factory Reset (if necessary)

Hold the Minus and buttons for 3 seconds in Miscellaneous.

Calibrate Coil (if installing a new coil)

In Coil Selection, select the coil icon to save calibration data. Modify the Coil Size if needed (hold Return/Auto FS to enter edit mode). Raise the coil 1 meter away from metal and soil. If the LCDs “Hold $\ominus + \oplus$ to calibrate,” hold the Minus and buttons until calibration starts. Calibration takes 25 seconds. Keep the coil in the air throughout. The LCD shows “Coil Ready” when done.

Perform Auto Frequency Scan (Auto FS) (if necessary to select the quietest frequency to eliminate electromagnetic interference)

Activate Auto FS by holding the Return/Auto FS button in the Main Detection UI.

Set Sensitivity, Audio Settings, and Vibration (to preferred levels)

Adjust Sensitivity, aligning the Real-time Scrolling Detection Signal peak with the Detection Threshold in the absence of a target.

Perform Auto Ground Balance (Auto GB) (to eliminate ground response)

Hold the Right/Auto GB button. Raise and lower the coil until the ground response is minimized or two short beeps are heard, then release the button.

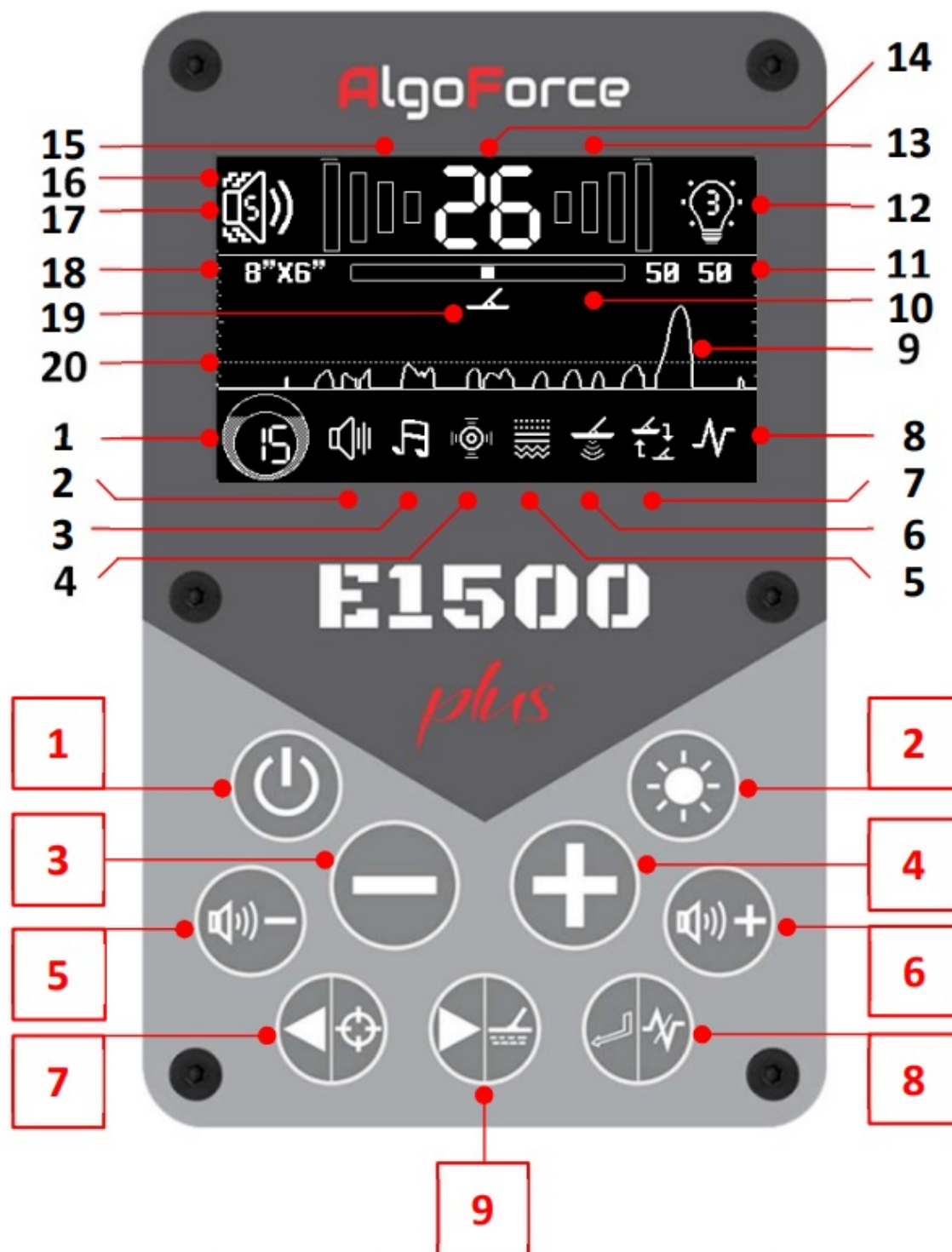
Begin Detecting

Keep the coil close to the ground and swing left and right at a pace of about 1 m/s.

Pinpoint detected target (if needed)

Enter the Pinpoint UI by pressing the Left/Pinpoint button in the Main Detection. Return to the Main Detection UI by pressing the Return/Auto FS button.

Product Overview

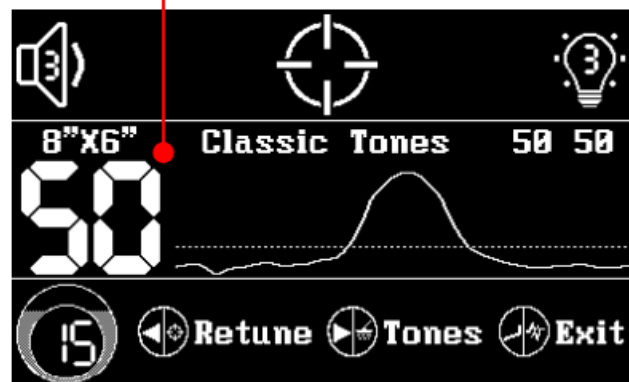


Main Detection User Interface (UI)

1. Sensitivity
2. Audio Threshold
3. Audio Tone
4. Audio Treble
5. Soil Type
6. Detection Mode
7. Coil Selection
8. Frequency Scan
9. Real-time Scrolling Signal
10. Ground Drift Indicator (G.D.I)
11. Dual Ground Balance Values
12. Backlight Level
13. High Tone Signal Strength
14. Soil Mineralisation
15. Low Tone Signal Strength
16. Vibration Level
17. Audio Volume Level
18. Selected Coil Size
19. Auto GB In Progress Indicator
20. Detection Threshold

Button Functions

Conductive Target ID



Pinpoint UI

1. Power On/Off
2. Minus
3. Vol/Vibration ↓
4. Left/Pinpoint
5. Right/Auto GB
6. Backlight/Theme
7. Plus
8. Vol/Vibration ↑

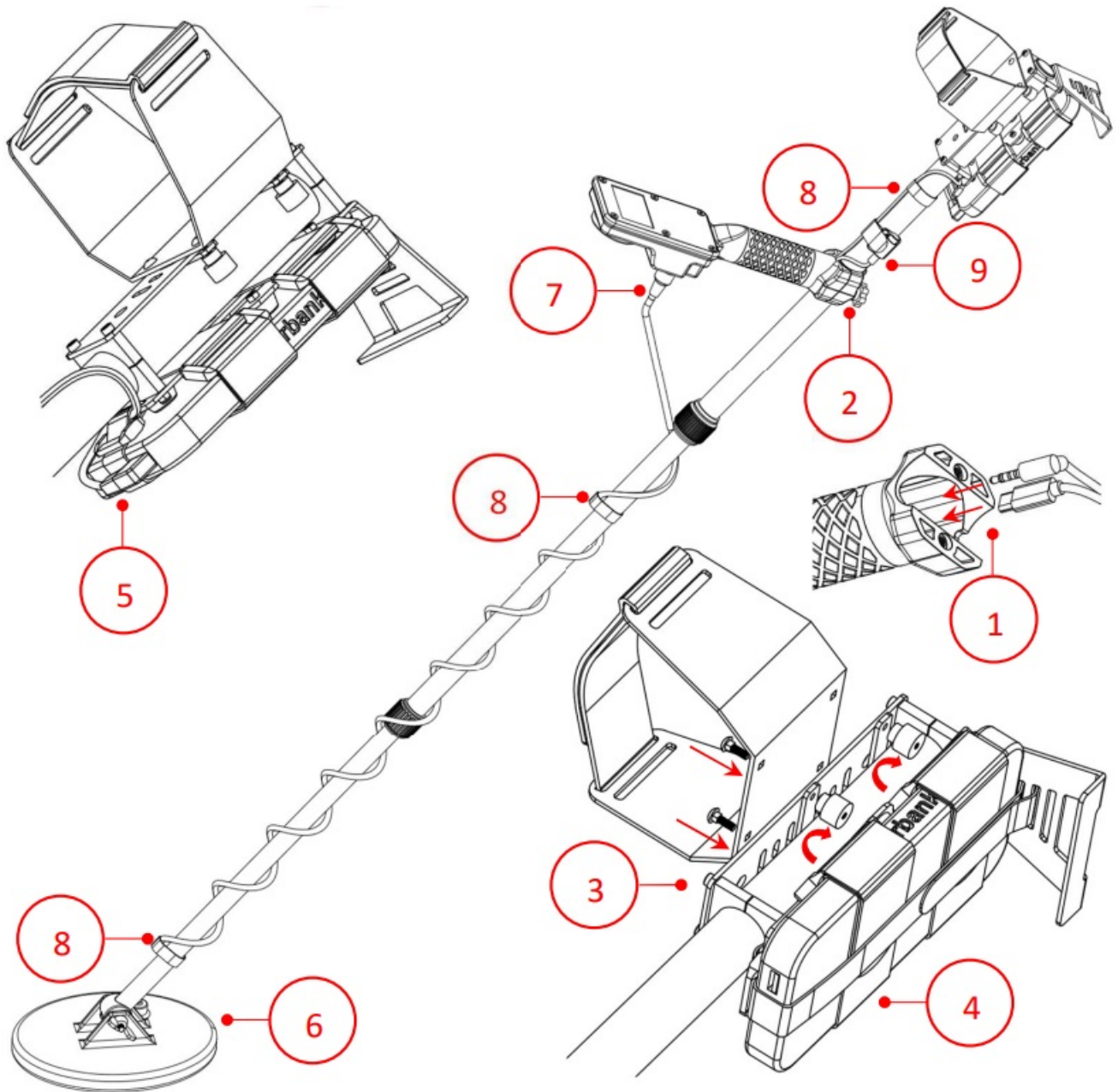
9. Return/Auto FS

Scan the QR code for the user manual



Warranty: See manual for details. Keep your receipt. For returns or warranty issues, contact your dealer if purchased through them. Caution: AlgoForce E1500 Plus is not intended for use in residential environments and may not provide adequate protection to the radio reception in such environments.

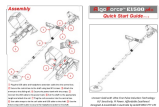
Assembly



1. Plug the USB cable and headphone extension cable into the control box.
2. Secure the control box to the shaft using two M5 screws.
3. Attach the armrest to the sliding rail.
4. Secure the power bank with the straps.
5. Connect the USB cable to the power bank.
6. Set the shaft to the appropriate length and attach the coil.
7. Plug the coil connector into the control box.
8. Use cable straps to tie the coil cable and USB cable to the shaft.
9. Use the Velcro strap with buckle to secure the headphone socket to the shaft.

Uncover Gold with Ultra-Fine Pulse Induction Technology:
 VLF Sensitivity, PI Power, Affordable Excellence!
 Designed & Assembled in Australia by ALGOFORCE PTY LTD.

Documents / Resources



[AlgoForce E1500 Pulse Induction Metal Detector](#) [pdf] User Guide

E1500 Pulse Induction Metal Detector, E1500, Pulse Induction Metal Detector, Induction Metal Detector, Metal Detector

References

- [User Manual](#)

[Manuals+](#), [Privacy Policy](#)

This website is an independent publication and is neither affiliated with nor endorsed by any of the trademark owners. The "Bluetooth®" word mark and logos are registered trademarks owned by Bluetooth SIG, Inc. The "Wi-Fi®" word mark and logos are registered trademarks owned by the Wi-Fi Alliance. Any use of these marks on this website does not imply any affiliation with or endorsement.