



algodue ELETTRONICA Ed2212 LAN Gateway Communication Module User Manual

[Home](#) » [algodue ELETTRONICA](#) » [algodue ELETTRONICA Ed2212 LAN Gateway Communication Module User Manual](#) 

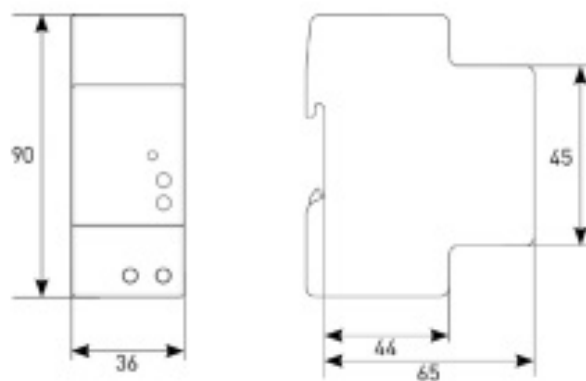
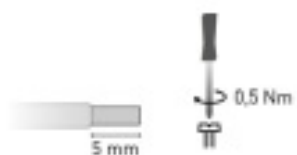
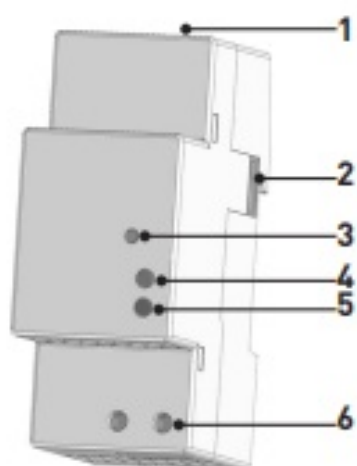
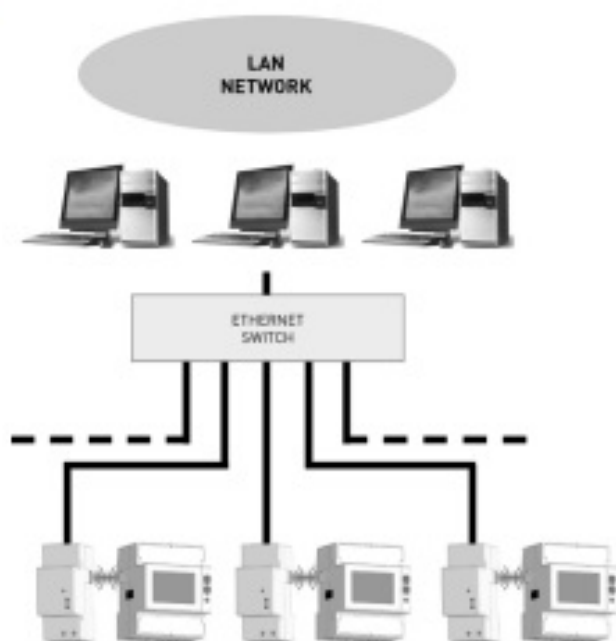
Contents

- [1 algodue ELETTRONICA Ed2212 LAN Gateway Communication Module User Manual](#)
- [2 Subject to change without prior notice](#)
- [3 PICTURE](#)
- [4 CABLE STRIPPING LENGTH](#)
- [5 OVERVIEW](#)
- [6 CONNECTIONS](#)
- [7 LEDS FUNCTIONALITY](#)
- [8 REMOTE MANAGEMENT BY WEB SERVER](#)
- [9 SET DEFAULT FUNCTION](#)
- [10 Read More About This Manual & Download PDF:](#)
- [11 Documents / Resources](#)
 - [11.1 References](#)



Subject to change without prior notice

PICTURE

A**B****C****D**



**WARNING! Device installation and use must be carried out only by qualified professional staff.
Switch off the voltage before device installation**

CABLE STRIPPING LENGTH

For the module terminal connection, cable stripping length must be 5 mm. Use a blade screwdriver with 0.8×3.5 mm size, fastening torque

- Refer to picture B.

OVERVIEW

Refer to picture C:

1. LAN port
2. Optical COM port
3. SET DEFAULT key
4. Status LED
5. Link activity LED
6. Power supply terminals

CONNECTIONS

After making LAN connections, combine each LAN GATEWAY module with a single meter: place them side by side, perfectly lined up, with module optical port facing the meter optical port. Then, carry out power supply connections. Refer to picture D.

LEDS FUNCTIONALITY

LEDs are available on the module front panel to provide link activity and general status:

LED COLOUR	SIGNALLING	MEANING
STATUS LED		
GREEN	Always ON	Module firmware boot in progress (60...90 s)
GREEN	Blinking (50ms ON, 2s period)	Meter communication=OK
RED	Blinking (500ms ON, 1s period)	Meter communication=fault/missing
LINK ACTIVITY LED		
—	OFF	<u>Network cable disconnected</u>
<u>GREEN</u>	Always ON	<u>Link OK</u>
GREEN	Blinking	Link activity

REMOTE MANAGEMENT BY WEB SERVER

1. Connect the LAN GATEWAY to the network switch or directly to the PC and power it
2. Check the IP address class set for PC LAN interface: if different from 168.1.xxx, change it (e.g. correct IP address: 192.168.1.1).
3. Run the Internet browser (e.g. Google Chrome) and type in the web address field 168.1.253 (LAN GATEWAY default address).
4. Access LAN GATEWAY web server as Administrator, entering the proper username and password (Username: admin, Password: admin).
5. In web server Settings page, set the desired LAN parameters (IP address, subnet mask, ...).
6. If needed, restore the previous settings on the PC LAN

LAN GATEWAY web pages have been designed for two user type:

- **Administrator:** full web server

User: limited web server use (possibility to add up to 20 User accounts).

AVAILABLE FUNCTIONS	ACCOUNTS	
	Administrator	User
<u>Display measurements</u>	_____•	_____.•
<u>Download measured data recordings</u>	_____•	_____.•
<u>Enable or delete measured data recordings</u>	_____•	_____
<u>Display meter status information</u>	_____•	_____.•
<u>Change LAN GATEWAY module settings</u>	_____•	_____
<u>Upgrade LAN GATEWAY module</u>	_____•	_____
Manage LAN GATEWAY module access accounts	•	
<u>Start/stop/reset partial counters</u>	_____•	_____
Reset all counters (in case of meter provided with RESET function)	•	

SET DEFAULT FUNCTION

SET DEFAULT function allows to restore on the module default settings (e.g. in case of IP address forgotten). To restore default settings, follow the instructions below:

1. Switch off the
2. Keep pressed SET DEFAULT key and simultaneously switch on the module: status LED will blink red during the SET DEFAULT
3. At the end of SET DEFAULT procedure, status LED will be red continuously indicating to release the
4. During the module restart, the status LED will be green (time for module restart: ..90 s).

Default settings:

IP address = 192.168.1.253

Subnet mask = 255.255.255.0

NTP time server = ntp.nasa.gov UTC time correction = +1

Administrator username & password = admin User username & password = user

Read More About This Manual & Download PDF:

Documents / Resources



[algodue ELETTRONICA Ed2212 LAN Gateway Communication Module](#) [pdf] User Manual
Ed2212, Ed2212 LAN Gateway Communication Module, LAN Gateway, Communication
Module, LAN Gateway Communication Module, Module

References

- [🌐 Algodue Elettronica: sistemi di monitoraggio energia](#)