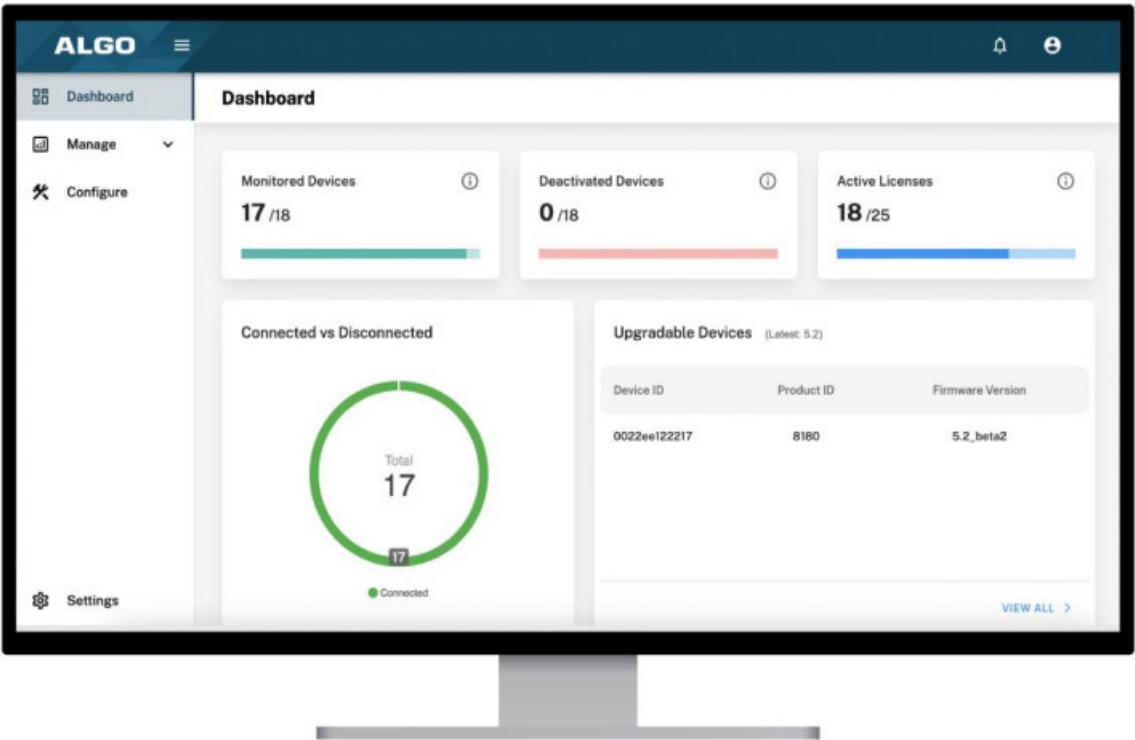


ALGO Device Management Platform Software User Guide

[Home](#) » [ALGO](#) » ALGO Device Management Platform Software User Guide 

ALGO

Device Management Platform Software
User Guide



Contents

- 1 Disclaimer
- 2 INTRODUCTION
- 3 DEVICE CONFIGURATION
- 4 USING THE ALGO DEVICE MANAGEMENT PLATFORM
- 5 Documents / Resources
 - 5.1 References
- 6 Related Posts

Disclaimer

The information contained in this document is believed to be accurate in all respects but is not warranted by Algo. The information is subject to change without notice and should not be construed in any way as a commitment by Algo or any of its affiliates or subsidiaries. Algo and its affiliates and subsidiaries assume no responsibility for any errors or omissions in this document. Revisions of this document or new editions of it may be issued to incorporate such changes. Algo assumes no liability for damages or claims resulting from any use of this manual or such products, software, firmware, and/or hardware.

No part of this document can be reproduced or transmitted in any form or by any means – electronic or mechanical – for any purpose without written permission from Algo.

Algo Technical Support

1-604-454-3792

support@algosolutions.com

INTRODUCTION

The Algo Device Management Platform (ADMP) is a cloud-based device management solution to manage, monitor, and configure Algo IP endpoints from any location. The ADMP is a helpful tool for both service providers and end users to effectively oversee all Algo devices deployed in a large environment or over multiple locations and networks. The ADMP requires devices to have firmware version 5.2 or higher installed.

DEVICE CONFIGURATION

To register an Algo device on the Algo Device Management Platform, you need to have both the ADMP and your Algo device web interface (UI) open.

2.1 Initial Setup – ADMP

1. Log in to the ADMP with your email and password (you can find this in an email from Algo):
<https://dashboard.cloud.algosolutions.com/>
2. Retrieve your ADMP Account ID, you can access your Account ID in two ways:
 - a. Press the account info icon in the top right-hand side of the navigation bar; then copy the Account ID by pressing the copy icon on the right of your Account ID.
 - b. Navigate to the ADMP Settings tab, scroll over the Account ID, and copy it for future use.

2.2 Enabling Cloud Monitoring on Your Device – Device Web UI

1. Go to the web UI of your Algo device by typing the device IP address in your web browser and log in.
2. Navigate to the Advanced Settings → Admin tab
3. Under the ADMP Cloud Monitoring heading at the bottom of the page:

- a. Enable 'ADMP cloud monitoring'
- b. Enter your Account ID (paste from step 1)
- c. Optional: adjust the heartbeat interval to your preference
- d. Press Save in the bottom right corner

After a few moments of first-time device registration, your Algo device will be ready to be monitored at

<https://dashboard.cloud.algosolutions.com/>.

2.3 Monitor Your Device – ADMP

1. Go to the ADMP dashboard.
2. Navigate to Manage → Unmonitored
3. Select your device and hover over the Manage pop-up menu and press Monitor from the drop-down selection
4. Your device will now be monitored and available under Manage → Monitored

USING THE ALGO DEVICE MANAGEMENT PLATFORM

3.1 Dashboard

The Dashboard tab provides a summary of the Algo devices deployed in your Algo ecosystem.

3.2 Manage

Under the dropdown menu of the Manage tab, select either the Monitored or Unmonitored subtabs to view your list of devices.

3.2.1 Monitored

1. In Manage → Monitored, select the view you would like to see: All, Connected, Disconnected. This will allow you to see your Algo devices registered on ADMP. Basic information displayed on each page includes:
 - Device ID (MAC address), Local IP, Name, Product, Firmware, Tags, Status
2. Select the checkbox for the Algo device or devices you wish to perform actions on, then select one of the following action buttons:
 - Unmonitor
 - Add Tag
 - Actions (e.g., Test, Reboot, Upgrade Latest, Push Config, Set Volume)

3.3 Configure

Add Tag

1. Under Configure, create a tag by selecting the Add Tag button.
2. Select color and type in your desired Tag Name, then press Confirm.

Add Configuration File

1. To add a configuration file, select the Upload tab.
2. Drag and drop, or search, your desired file, and press Confirm.


3.4 Settings

The Settings tab allows you to see your account settings as well as your License Agreement and expiry. You may also choose to receive email notifications when a device goes offline. At the end of your session, here is where you will go to sign out of the ADMP.

©2022 Algo® is the registered trademark of Algo Communication Products Ltd. All Rights Reserved. All other trademarks are the property of their respective owners. All specs are subject to change without notice.

AL-UG-000061050522-A
support@algosolutions.com
September 27, 2022
Algo Communication Products Ltd.
4500 Beedie Street, Burnaby
V5J 5L2, BC, Canada
1-604-454-3790
www.algosolutions.com

Documents / Resources

	<p>ALGO Device Management Platform Software [pdf] User Guide Device Management Platform, Software, Device Management Platform Software</p>
---	--

References

- [A Home - Algo Communication Products Ltd.](#)
- [A ADMP](#)

Manuals+.