

Alfresco

URS-1 Refrigerator



Alfresco URS-1 Refrigerator User Manual

[Home](#) » [Alfresco](#) » Alfresco URS-1 Refrigerator User Manual 

Contents

- [1 Alfresco URS-1 Refrigerator](#)
- [2 Specifications](#)
- [3 Product Usage Instructions](#)
- [4 FAQ](#)
- [5 OPERATION](#)
- [6 CARE AND MAINTENANCE OF YOUR REFRIGERATOR:](#)
- [7 TROUBLESHOOTING](#)
- [8 WIRING DIAGRAM](#)
- [9 Warranty](#)
- [10 Documents / Resources](#)
 - [10.1 References](#)

Alfresco URS-1 Refrigerator

Alfresco



Specifications

- **Model:** Alfresco URS-1(06-10679-08-16900)
- **Serial Numbers:** 06-10679 to 08-16900
- **Last Revised:** May 30th, 2008 For Outdoor Use Only

Product Usage Instructions

Important Safety Warnings:

- Do not splash or spray water from a hose onto the refrigerator to avoid electrical shock, injury, or death.
- Avoid wetting electrical parts and components when cleaning or operating to prevent serious injury or damage to the unit.
- Do not damage piping or aluminum fins when cleaning the condensing coil under pressure to prevent unit damage or injury.
- The appliance is intended for outdoor use only and should not be installed in recreational vehicles or boats.
- Ensure proper grounding of the refrigerator using a three-pronged plug and do not cut or remove the grounding prong from the plug.

Control Settings and Temperature Adjustment

Your ALFRESCO refrigerator features a constant cut-in thermostat to prevent coil freezing. It operates by lowering the cabinet temperature to your desired setting (1 through 7) and provides defrost cycles during operation.

Controls and Location:

- Thermostat Control
- On/Off Main Power Switch

Important Note: The refrigerator has a time delay to protect the compressor. When powered on, the compressor will not run for approximately ten minutes before the refrigeration cycle starts. It may take an additional five to ten minutes for cold air to be felt inside the unit.

FAQ

- **Q:** Can I use the refrigerator indoors?
- **A:** No, the refrigerator is designed for outdoor use only and should not be installed indoors.
- **Q:** What should I do in case of damage during transit?
- **A:** For exterior damage, make a thorough damage notation on your delivery receipt and request an inspection report from the carrier. For concealed damage, report it to the carrier within fifteen days of receipt. Do not return damaged merchandise to the manufacturer; file a claim with the carrier.

PLEASE READ THIS MANUAL BEFORE USING YOUR APPLIANCE. KEEP THIS MANUAL IN A SAFE PLACE FOR FUTURE REFERENCE.

ASSEMBLER / INSTALLER

Leave these instructions with the customer

CONSUMER/USER

Read these instructions and keep them in a safe place for future reference

NOTE TO CUSTOMER:

This appliance was carefully packed and thoroughly inspected before leaving our factory. Responsibility for its safe delivery was assumed by the carrier upon acceptance of the shipment. As directed on the packing carton, claims for loss or damage sustained in transit must be made to the carrier as follows:

- **Exterior Damage:** Make a thorough damage notation on your delivery receipt and have the driver acknowledge by signature and date. Send a written request asking for an inspection report from the carrier. Include the name of the carrier representative and the date the inspection was requested. Retain the inspection report and receipt for filing of a claim.
- **Concealed Damage:** This must be reported to the carrier within fifteen days of receipt. Obtain inspection report from the carrier. Retain inspection report for filing of a claim. **DO NOT RETURN DAMAGED MERCHANDISE TO THE MANUFACTURER OR DEALER – FILE CLAIM WITH THE CARRIER.**

WARNING DO NOT SPLASH OR SPRAY WATER FROM A HOSE ONTO THE REFRIGERATOR. DOING SO MAY CAUSE AN ELECTRICAL SHOCK, INJURY OR DEATH.





WARNING

ELECTRICAL PARTS AND COMPONENTS

DO NOT WET WHEN CLEANING OR OPERATING. IF NOT AVOIDED, COULD RESULT IN DEATH, SERIOUS INJURY OR DAMAGE TO THE UNIT

WARNING
CONTENTS UNDER PRESSURE.

	 CAUTION
	CONDENSING COIL UNDER PRESSURE DO NOT DAMAGE PIPING OR ALUMINUM FINS WHEN CLEANING. IF NOT AVOIDED, DAMAGE TO THE UNIT OR INJURY MAY RESULT.

WARNING

FOR OUTDOOR USE ONLY. THIS APPLIANCE IS NOT INTENDED TO BE INSTALLED IN OR ON RECREATIONAL VEHICLES AND/OR BOATS.

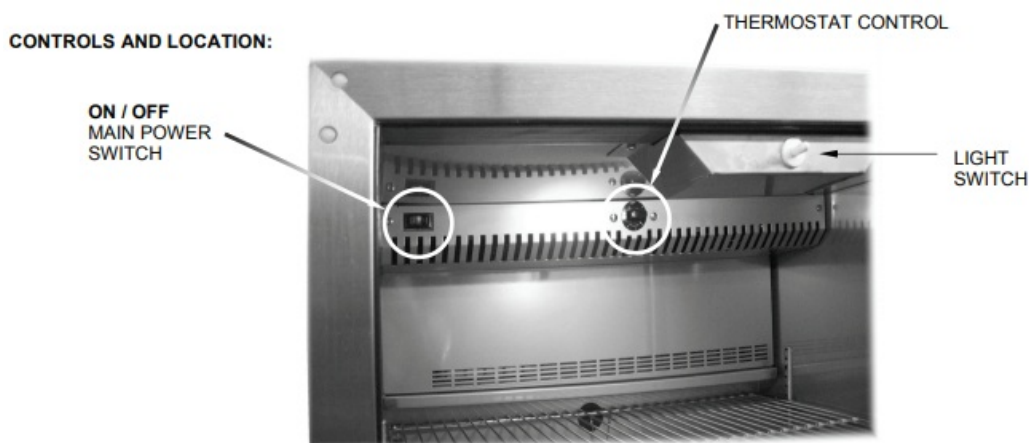
WARNING

IMPORTANT ELECTRICAL INSTRUCTIONS: THE REFRIGERATOR IS EQUIPPED WITH A THREE-PRONGED (GROUNDING) PLUG FOR YOUR PROTECTION AGAINST SHOCK HAZARDS AND SHOULD BE PLUGGED DIRECTLY INTO A PROPERLY GROUNDED THREE-PRONGED RECEPTACLE. DO NOT CUT OR REMOVE THE GROUNDING PRONG FROM THIS PLUG. KEEP THE CORD AWAY FROM HEATED SURFACES. DO NOT USE AN EXTENSION CORD.

URS-1 CONTROL SETTINGS AND TEMPERATURE ADJUSTMENT:

OPERATION

Your ALFRESCO refrigerator features a constant cut-in thermostat to avoid coil freezing. It operates by lowering the cabinet temperature to your desired setting (1 through 7) but always provides a defrost to the unit as it cycles ON and OFF during operation.



IMPORTANT NOTE: This refrigerator is equipped with a time delay to protect the compressor. When the unit is powered on, the compressor will not run for approximately ten minutes, this is normal. The refrigeration cycle will then start but it may be a further five to ten minutes before cold air will be perceived inside the unit.

Switch the unit ON using the main ON/OFF power switch. Immediately after the unit is switched on the cabinet light and inside evaporator fans will start operating. Turn the thermostat knob clockwise from the OFF position to the desired temperature setting.

ALFRESCO™ recommends starting the unit at number 4 for optimal operation, and adjusting up or down to your

preference once the units' cabinet temperature has stabilized after 24 hours of operation.

ADJUSTMENTS ITEMS TO REMEMBER

- FOR NORMAL OPERATION SET THE UNIT TO NUMBER 4
- DO NOT CHANGE THE TEMPERATURE SETTING MORE THAN 1 NUMBER AT A TIME.
- ALLOW 24 HOURS FOR THE REFRIGERATOR TO REACH A NEW TEMPERATURE SETTING.
- THE MOTOR WILL START AND STOP OFTEN. THIS IS NORMAL OPERATION.
- KEEP YOUR REFRIGERATOR LEVELED.

USE TIPS & ENERGY SAVING IDEAS

CLEANING:

Exercise caution when sweeping, vacuuming or mopping near the front of the unit.

For normal cleaning, mix 2 tablespoons of baking soda with 1 quart of warm water or use a mild soap. Do not use harsh cleaners or abrasives. Do not splash or spray water onto or under the refrigerator.

TIPS FOR ENERGY SAVING:

Your ALFRESCO™ refrigerator is designed with the latest technology to be highly energy efficient. However, following a few simple tips can help save even more energy.

- Limit how often the door is opened.
- Close the door as soon as possible after opening.
- Don't put hot foods into the unit.
- During prolonged periods of non-use, set the temperature to a higher setting or switch the unit off.
- Keep door and drawer gaskets clean to ensure a proper seal.

CARE AND MAINTENANCE OF YOUR REFRIGERATOR:

Stainless Steel is widely used for kitchen equipment because of its strength, its ability to resist corrosion, and its ease of cleaning. In fact, stainless steel ranks alongside glass and new china in terms of "ease of cleaning" and in percentage removal of bacteria during washing. As a result of these virtues, the metal is often taken for granted and it is assumed that no problems will arise during its usage. However, some care is required to ensure that the stainless steel can live up to this reputation.

DAY TO DAYCARE

- To maintain the original appearance of your ALFRESCO Refrigerator, a regular cleaning routine should be carried out using the following guidelines:
- After use, wipe the unit with a soft, damp, soapy cloth and rinse with clean water, preferably warm/hot water.
- This should remove most substances encountered during use. For more tenacious deposits, including oil, grease, and water-borne deposits, use a multipurpose cream cleanser and apply with a soft damp cloth. Rinse with fresh water.
- Harsh abrasives and scouring materials should not be used for cleaning stainless steel as they will leave scratch marks on the surface and damage the appearance.
- Likewise do not use wire brushes, scrapers, or contaminated scouring pads.
- If the preceding guidelines are adhered to, your ALFRESCO Stainless Steel Refrigerator should offer excellent life and should live up to its reputation of being "stainless".
- Neglect of this practice, however, can lead to deterioration of the surface and, in some extreme cases, corrosion of the steel itself. The two most common types of corrosion that may be encountered, particularly on

stainless steel, are

- rust marks and pitting of the surface.

RUST BROWN MARKS

- When this type of staining occurs it is unlikely that rusting of the stainless steel itself caused the marks. Similar marks can be found with both porcelain and plastic sinks.
- The rust marks are more likely the result of small particles of
- “ordinary steel” which has become attached to the surface and subsequently rusted in the damp environment.
- The most common source of such particles is from “wire wool” scouring pads, but may also occur from carbon steel utensils and old cast iron water supply pipes.
- These brown marks are only superficial stains, which will not harm the unit; they should be removable using a soft damp cloth and multi-purpose cream cleanser. Occasionally, it may be necessary to resort to a proprietary stainless
- steel cleanser, to return the surface of the unit to its original condition.

PITTING

- Another form of corrosion, which occasionally occurs in stainless steel, is the pitting of the surface. The reason for this corrosive attack can usually be attributed to certain household products, for example:

BLEACHES

- Most common domestic bleaches & sterilizing solutions contain chlorine in the form of sodium hypochlorite. If used in concentrated form, bleaches can attack the stainless steel, causing pitting of the surface. They should always be
- used to the strengths prescribed by the manufacturer and should be thoroughly rinsed off with clean water immediately after use.

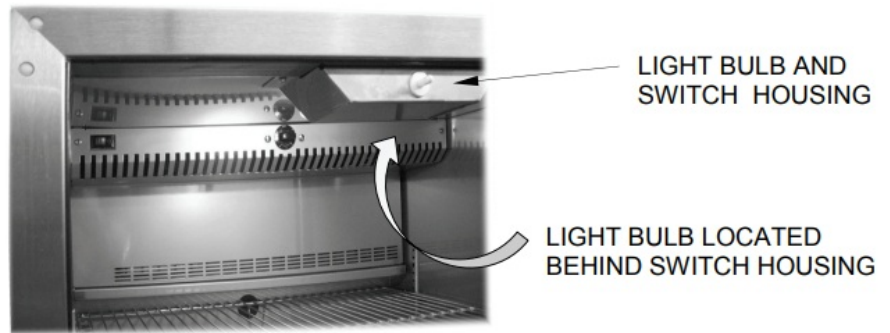
FOODSTUFFS

- In general, stainless steel is fully resistant to all foodstuffs in common use. Only in isolated cases, such as when concentrated salt and vinegar mixtures are allowed to remain in contact with the steel for a long period, can any surface marking result.

REPLACING THE INTERIOR LIGHT

- Your ALFRESCO refrigerator is equipped with an interior light, it is a standard 40-watt / 120-volt AC refrigerator bulb. (It is also known as the T6.5 intermediate base appliance bulb). To replace, unplug the unit, remove the burned-out
- bulb located behind the light switch box at the interior top and install the new one. Plug the unit back into its electrical outlet to restore normal operation.

LIGHT BULB LOCATION:



TROUBLESHOOTING

BEFORE CALLING FOR SERVICE

- If the unit does not function properly use the following checklist before contacting your dealer for service. You may save the cost of a service call and the inconvenience of being without your refrigerator.

REFRIGERATOR NOT COOLING ENOUGH

- Lower the temperature of the cabinet by turning the thermostat clockwise to a higher cooling number.

NOISY OPERATION

- This is usually caused by the unit not being level. Reposition the refrigerator to see if the noise can be eliminated.

MOISTURE ON OR IN UNIT

- Warm moist air will condense on cold surfaces. Condensation inside the unit can be caused by too frequent or prolonged opening of the doors. Moisture can also be caused by the thermostat being set too cold. Check the temperature of the unit. Try adjusting to a slightly higher temperature to see if the problem can be eliminated. Minimize door openings and verify that the door gasket is sealing properly around the perimeter.

APPLIANCE RUNS TOO LONG

- Running time will change with outside temperature, number of times and length of time the doors are open, etc. This is normal in hot or humid weather and is not detrimental to the operation of the unit

LOCATING AND INSTALLING YOUR REFRIGERATOR

- NEVER SPLASH OR SPRAY WATER FROM A HOSE DIRECTLY ON THE REFRIGERATOR. DO NOT LOCATE THE UNIT WHERE IT WILL BE SUBJECT TO DIRECT SPRINKLER SPRAY. EXCESSIVE WATER CONTACT MAY
- RESULT IN ELECTRICAL SHOCK, SERIOUS INJURY OR DEATH.

SELECT LOCATION

- The proper location will ensure the peak performance of your refrigerator. Choose a location where the unit will be out of direct sunlight and away from heat sources. Your ALFRESCO refrigerator is designed to be operated in a
- properly ventilated area with an ambient temperature of not less than 30°F, nor more than 120°F.
- Your ALFRESCO refrigerator requires ventilation from the bottom front of the unit. For a cart-mounted (Optional wheel kit) model, keep the area directly in front and behind the unit clear of obstructions. For a built-in unit, make sure
- the back and bottom of the unit have at least 2 inches of clearance to the cabinet, and the unit can be easily removed from the cabinet for servicing.

ELECTRICAL SERVICE

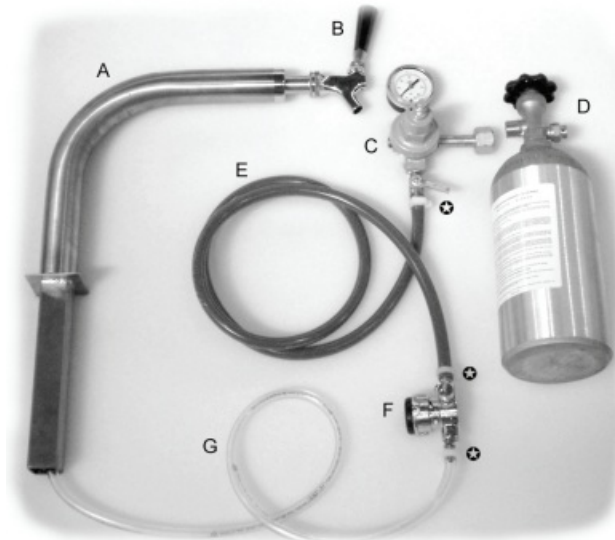
- All ETL-listed refrigerators are equipped with a three-pronged plug. Use only the electrical cord supplied with the unit, which must be plugged directly into a properly grounded 3-prong outlet, preferably a GFCI circuit, in accordance with the National Electrical Code and applicable local codes and ordinances. The third prong (grounding prong) **SHOULD NOT**, under any circumstances, be cut or removed. Do not use an extension cord with this unit.

KEG COOLER APPLICATION:

Your ALFRESCO refrigerator has been designed with enough interior volume to hold a standard US full-size 15-gallon beer keg. In addition, the refrigerator allows the installation of a beer faucet and support arm that will allow you to serve “Beer-on-Tap”.

This optional equipment permits you to have a counter Keg Tap system as well as a movable unit with the optional caster kit. The Keg kit is very easy to install by following the next steps:

KEG KIT INSTALLATION & COMPONENTS



KEG KIT COMPONENTS

- A – Support Arm.
- B – Beer Faucet [“TAP”].
- C – Single Gauge Pressure Regulator with connector and shut-off ball valve.
- D – Aluminum 2.5 Lbs CO2 Bottle.
- E – CO2 Pressure line (5/16” ID / BLUE color line)
- F – Sanitary Key [“SANKEY”] Standard US – low profile. G – Beer Line (3/16” ID / CLEAR color line).

KEG KIT INSTALLATION

1. On the back top section of your refrigerator, there is an opening provided for the faucet support arm (see pictures 1 & 2).
2. Remove the cap as shown in picture 2 by lifting the cap straight out, exposing the opening.
3. Save the cap for future use. Remove the beer line access hole plug located on the inside of the refrigerator, just below the evaporator. (See pictures 3 & 4)

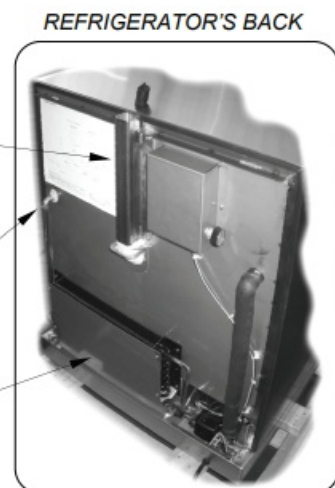
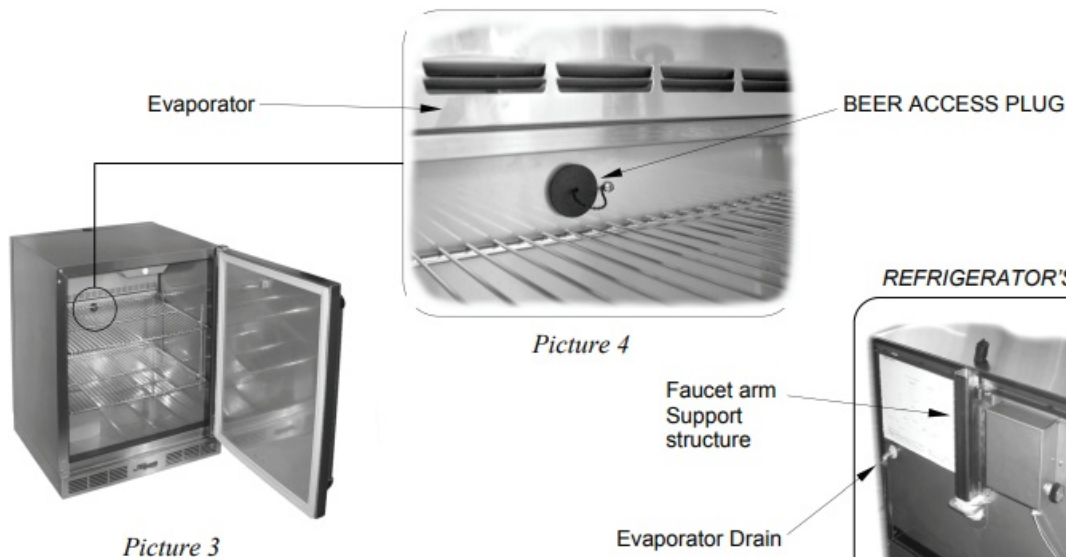


Picture 1



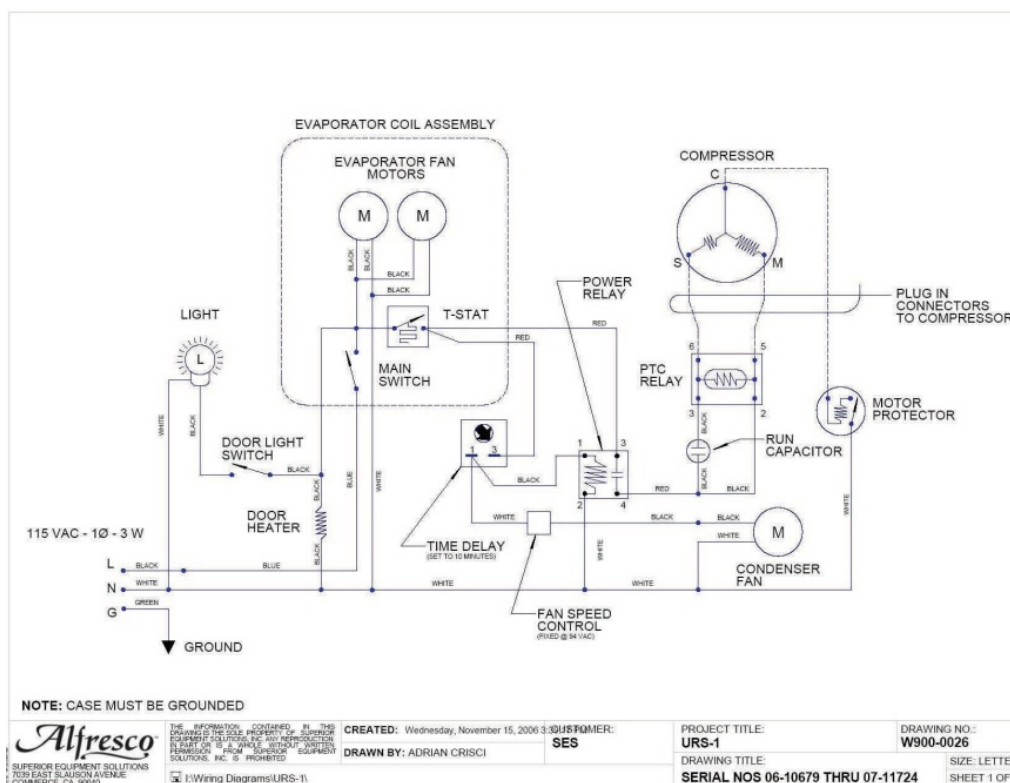
Picture 2

4. Insert the beer line (3/16" ID / clear color tubing) from the top of the refrigerator and allow it to drop to the inside of the refrigerated compartment.
NOTE: The beer line travels through the back section of the unit into the refrigerated compartment by following the faucet arm support structure located behind the refrigerator's back cover. (See pictures 5) There is no need to remove the back cover of the refrigerator for this procedure.
5. Once the beer line has been inserted all the way to the refrigerated section, insert the support arm into the top opening.
6. Install the pressure regulator to the CO2 bottle and tighten securely using a wrench in order to avoid CO2 leakage.
7. Close the ball valve in the regulator and open the CO2 bottle valve.
8. Adjust the regulator to a pressure between 8 ~ 10 PSI using the regulator set screw.
NOTE: More than 10 PSI of pressure will cause the beer to foam up at the tap, maintain the pressure between 8 ~ 10 PSI for optimum performance.
9. Connect the CO2 line (5/16" ID / Blue color tubing) to the regulator and Sanitary Key [SANKEY] and install the hose clamps provided in order to secure the tubing to the hose barbed fittings.
10. Install the Sanitary Key [SANKEY] on the beer keg and connect the beer line from the faucet arm to the SANKEY. Secure the tubing with the clamps provided.
11. Open the CO2 regulator ball valve slowly to pressurize the keg.
12. Open the TAP faucet slowly to allow the beer to flow through the system.
13. Locate the Keg and CO2 bottle inside the refrigerator.
NOTE: Maintain beer between 34°F and 38°F for proper flow and foam. If beer is over 38°F it will foam out easily.

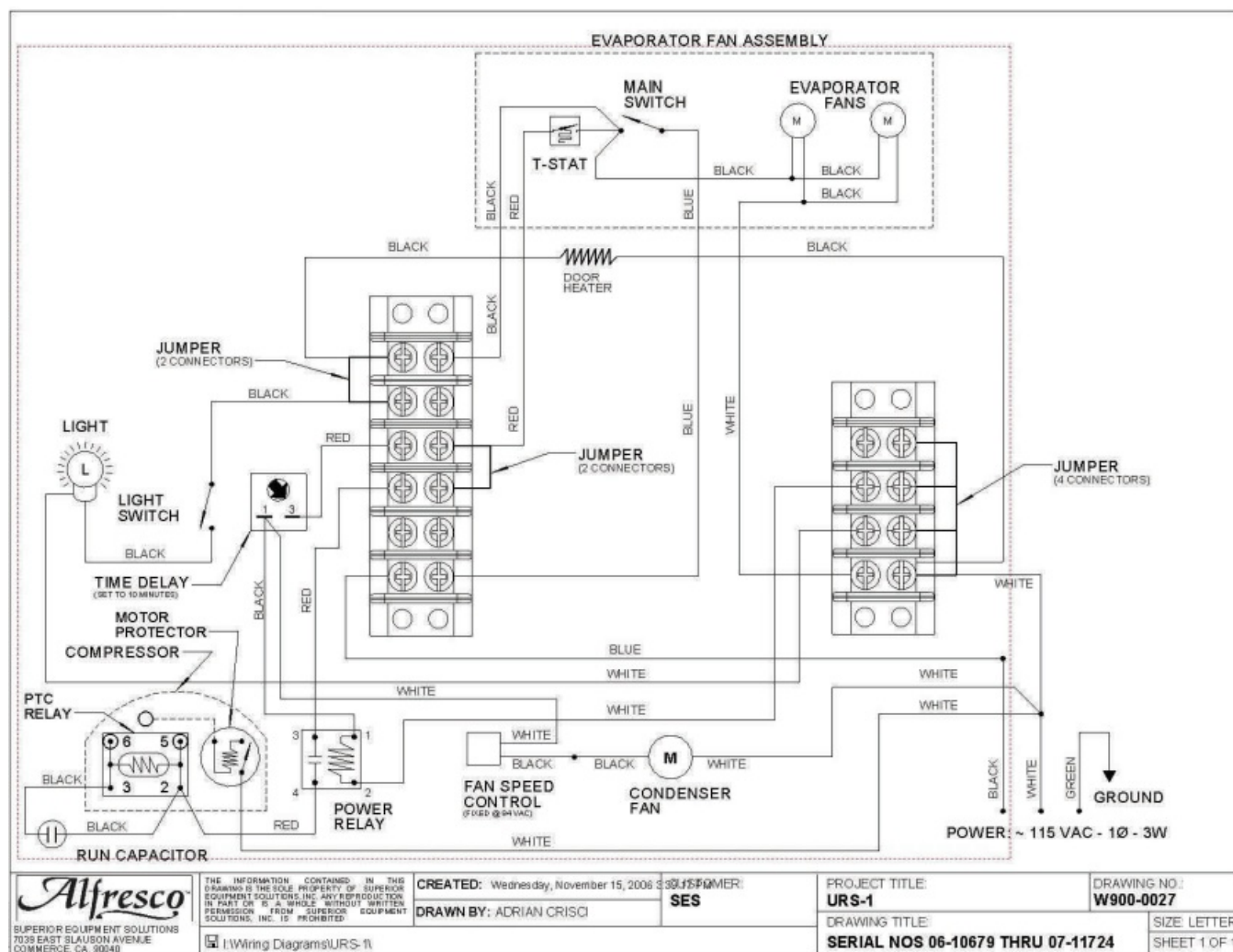


NOTE: There is no need to remove the refrigerator's back in order to install the beer line. Illustrations are for reference only.

WIRING DIAGRAM



SCHEMATIC DIAGRAM



Warranty

This warranty covers the following: ALFRESCO GOURMET REFRIGERATORS (All Models)

DURATION OF WARRANTY

Alfresco Gourmet Grills, (a division of SES, Inc) warrants all refrigerator components to the original purchaser to be free of factory defects in material and workmanship for a period of one (1) year from the original date of purchase. This limited warranty covers the structural integrity of the exterior and interior body parts, compressor and refrigeration components. Should structural deterioration occur to the degree of non-performance, a replacement will be furnished FOB Commerce, California. This warranty does not apply if the unit was subject to other than normal household use.

Alfresco Gourmet Grills WILL Cover:

All repair labor and replacement parts for one year, for parts found to be defective due to materials or workmanship. Authorized Factory Agent must provide Service during normal working hours. No charge will be made for repair and/or replacement of components at the factory for parts returned pre-paid, through the dealer and claimed within the warranty period, and found to be defective by Alfresco Gourmet Grills. Alfresco Gourmet Grills WILL NOT cover:

- Installation or start-up
- Normal adjustment to temperature
- Damage resulting from accident, alteration, misuse, abuse, hostile environments, improper installation or installation not in accordance with local codes.
- Cleaning and/or general maintenance.
- Shipping damage
- Service by an unauthorized agency.

- Damage or repairs due to service by an unauthorized agency.
- The use of unauthorized parts.
- Overtime, weekends, holidays
- Improper installation, such as improper hook-up, inadequate ventilation, etc
- Service visits to:
- Correct the installation. (You are responsible for providing electrical wiring, and other connecting facilities.)
- Repairs due to other than normal use.
- Supply the user with operational assistance on-site.


Replacement will be FOB Alfresco, Commerce, California, and Alfresco will not be liable for any transportation costs, labor costs, or export duties. This warranty shall not apply, nor can we assume responsibility for damage that might result from failure to follow manufacturer instructions or local codes, where the appliance has been tampered with or altered in any way or which, to our judgment, has been subjected to misuse, negligence, or accident. The implied warranty shall not extend beyond the duration of this written warranty. This warranty is in lieu of all other warranties expressed or implied and all other obligations or liability, in connection with the sale of this appliance.

FOR SERVICE, CALL: 1 866 203 5607

When calling, please provide the following information: model number, serial number, and date of installation, along with a brief description of the problem. The model number and serial number can be found on a plate located near the top of the inside left wall.

For other product information, contact: Alfresco Gourmet Grills. 7039 East Slauson Ave, Commerce, CA 90040.

Documents / Resources

	<p>Alfresco URS-1 Refrigerator [pdf] User Manual 06-10679, 08-16900, URS-1 Refrigerator, URS-1, Refrigerator</p>
---	--

References

- [✂ Repair Your Grill: Shop Replacement Parts for 24,880 Models](#)
- [✂ Alfresco Refrigerator Parts - Select From 7 Models](#)
- [User Manual](#)

Manuals+. [Privacy Policy](#)

This website is an independent publication and is neither affiliated with nor endorsed by any of the trademark owners. The "Bluetooth®" word mark and logos are registered trademarks owned by Bluetooth SIG, Inc. The "Wi-Fi®" word mark and logos are registered trademarks owned by the Wi-Fi Alliance. Any use of these marks on this website does not imply any affiliation with or endorsement.