



Alfred Connect V2 WiFi Bridge User Guide

[Home](#) » [Alfred](#) » Alfred Connect V2 WiFi Bridge User Guide 



**Alfred Connect V2
User Guide
Alfred International Inc.**



Contents

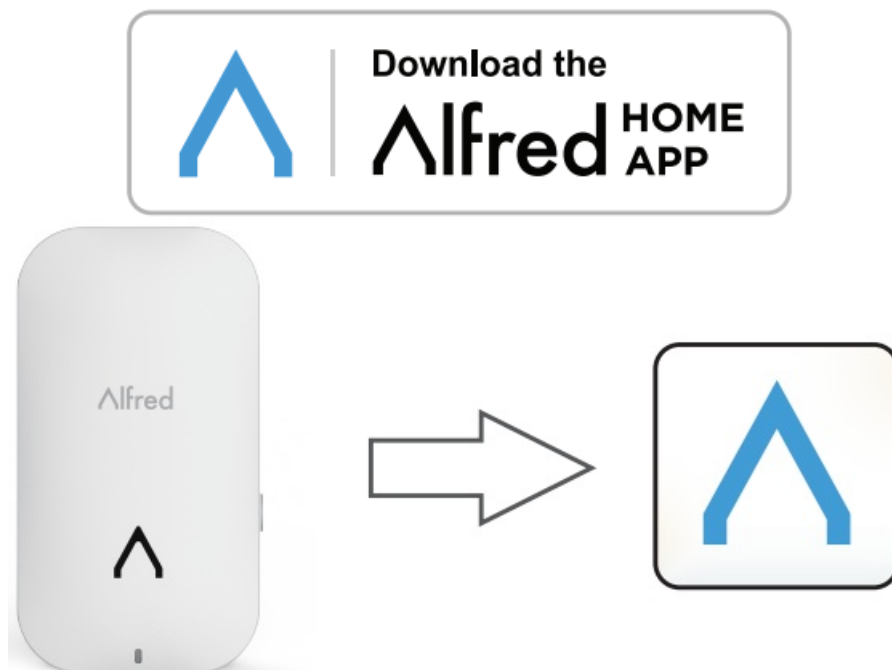
- [1 Connect V2 WiFi Bridge](#)
- [2 Indicators](#)
- [3 Reset Process](#)
- [4 Voice Assistant Setup](#)
- [5 Documents / Resources](#)
- [6 Related Posts](#)

Connect V2 WiFi Bridge

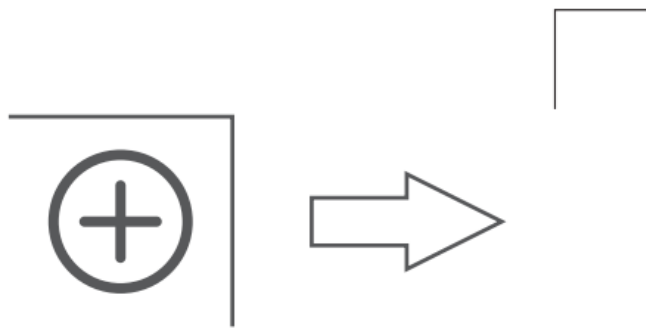
Quick Start Guide

 	 
https://play.google.com/store/apps/details?id=com.alfred.home	https://itunes.apple.com/cn/app/id1405563366

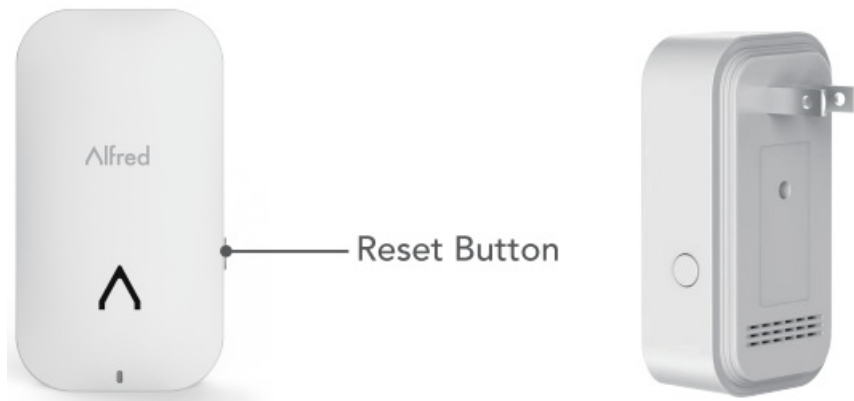
1. Download Alfred Home App



- First plug your Connect V2 WIFI bridge into an outlet so it can prime for the pairing process. For optimal connection, outlet should be within 1015 ftof your Alfred Smartlock.



3. Next sign in to your Alfred Home App on your mobile device. Tap the Icon in the top right corner of the app, and then select “Alfred Connect”. Here is where you will be asked to scan the attached QR code for pairing.



Indicators

Solid Blue light: Network connected.

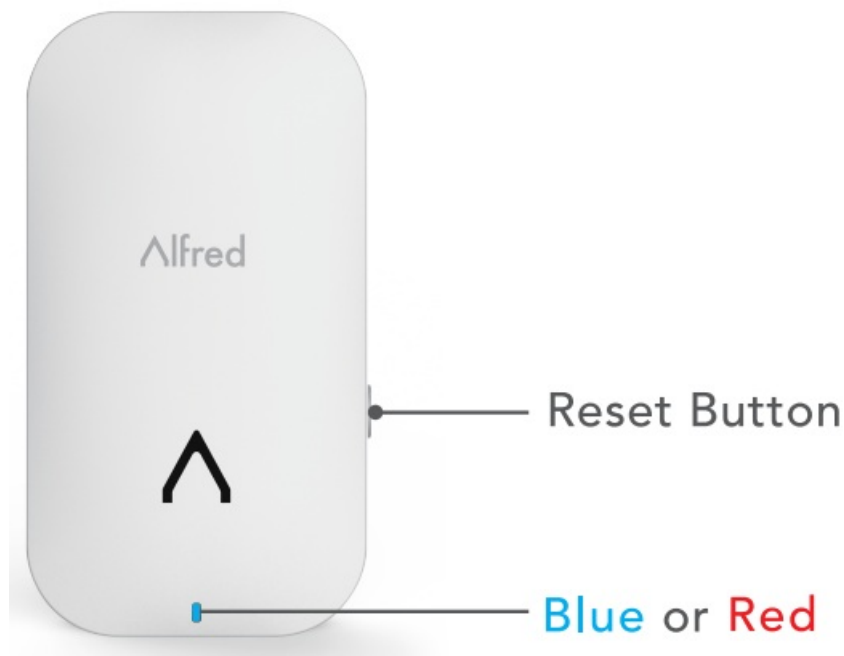
Slow Flashing Blue Light: Connecting to network.

Flashing Blue & Red Light: Ready to add new locks or network resetting.

Flashing Red Light: Firmware updating or Alfred Connect resetting.

ATTENTION: DO NOT POWER OFF WHEN RED LIGHT IS FLASHING!

- Operating control- Type 1
- Rated impulse voltage – 1500V
- Overvoltage Category – II
- Protection Against Electric Shock — Class II
- Rating: 100~125V, 10-20mA, 50Hz/60Hz
- Operating ambient temperature -10~45°C
- Shipping and Storage Temperature: -40~70°C
- Pollution degree – 2
- Ingress Environment – IPO0 (NEMA 1)



Reset Process

Network reset:

Hold "Reset button" 4 seconds.

Hub Reset:

Hold "Reset button" 9 seconds.

Voice Assistant Setup

For both Hey Google and Alexa voice assistant setup, please follow linking procedures within your voice assistant of choice App to complete the setup process. This is NOT done within the Alfred Home App.



If you need any help, please reach out to the Alfred Solutions team: Call 1-833-4-ALFRED (253733) or Email: Support@alfredinc.com or Live Chat online at www.alfredinc.com

The instruction is for reference only. Slight differences may be found in the user interface. All the designs and software here are subject to change without prior written notice.

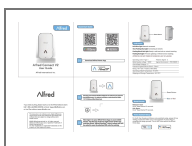
©2022 Alfred International Inc. All rights reserved.

Alfred and Alfred Logos are a registered Trademark of Alfred International Inc.

All other Trademarks or registered Trademarks are the property of their respective owners.



Documents / Resources



[Alfred Connect V2 WiFi Bridge](#) [pdf] User Guide
WB2, Connect V2 WiFi Bridge, Connect V2, WiFi Bridge

