



ALFATRON SC61E Compact Scaler Switcher 6×1 User Manual

[Home](#) » [ALFATRON](#) » ALFATRON SC61E Compact Scaler Switcher 6×1 User Manual 

Contents

- [1 ALFATRON SC61E Compact Scaler Switcher 6×1](#)
- [2 Product Information](#)
- [3 Product Usage Instruction](#)
- [4 FCC Statement](#)
- [5 SAFETY PRECAUTIONS](#)
- [6 Introduction](#)
 - [6.1 Features](#)
 - [6.2 Package List](#)
- [7 Panel Description](#)
 - [7.1 Front Panel](#)
 - [7.2 Rear Panel](#)
- [8 System Connection](#)
 - [8.1 Usage Precautions](#)
 - [8.2 System Diagram](#)
- [9 System Operations](#)
- [10 Specification](#)
- [11 Panel Drawing](#)
- [12 Troubleshooting & Maintenance](#)
- [13 Warranty](#)
- [14 Documents / Resources](#)
- [15 Related Posts](#)



ALFATRON SC61E Compact Scaler Switcher 6×1



Product Information

Preface

Read this user manual carefully before using this product. Pictures shown in this manual are for reference only, and the actual product may differ in model and specifications. This manual provides operation instructions only and does not cover maintenance usage. Please contact authorized dealers for the latest details.

Trademarks

The mentioned product model and logo are trademarks. Any other trademarks mentioned in this manual are acknowledged as the properties of the respective trademark owners. No part of this publication may be copied or reproduced without prior written consent.

Product Usage Instruction

Safety Precautions

- To ensure optimal performance, read all instructions carefully before using the device. Keep this manual for future reference.
- Unpack the equipment carefully and retain the original box and packing material for possible future shipment.
- Follow basic safety precautions to reduce the risk of fire, electrical shock, and injury to persons.
- Do not dismantle the housing or modify the module, as it may result in electrical shock or burn.
- Using supplies or parts that do not meet the product's specifications may cause damage, deterioration, or malfunction.
- Refer all servicing to qualified service personnel.
- Do not expose the unit to rain, moisture, or water. Install the product away from water sources.
- Avoid putting heavy items on the extension cable to prevent extrusion.
- Do not remove the housing of the device, as opening or removing it may expose you to dangerous voltage or other hazards.
- Install the device in a well-ventilated place to avoid damage caused by overheating.
- Keep the module away from liquids. Spillage into the housing may result in fire, electrical shock, or equipment damage. If an object or liquid falls or spills on the housing, immediately unplug the module.
- Do not twist or pull the ends of the optical cable, as it can cause malfunction.
- Do not use liquid or aerosol cleaners to clean this unit. Always unplug the power before cleaning.
- Unplug the power cord when the device is not in use for a long period of time.
- Dispose of scrapped devices according to local regulations. Do not burn or mix with general household waste; treat them as normal electrical wastes.

Preface

Read this user manual carefully before using this product. Pictures shown are this manual is for reference only, different model and specifications are subject to real product. This manual is only for operation instruction only, not for any maintenance usage. Please refer to the dealers for the latest details.

Trademarks

Mentioned product model and logo are trademarks. Any other trademarks mentioned in this manual are acknowledged as the properties of the trademark owner. No part of this publication may be copied or reproduced without the prior written consent.

FCC Statement

This equipment generates, uses and can radiate radio frequency energy and, if not installed and used in accordance with the instructions, may cause harmful interference to radio communications. It has been tested and found to comply with the limits for a Class B digital device, pursuant to part 15 of the FCC Rules. These limits are designed to provide reasonable protection against harmful interference in a commercial installation. Operation of this equipment in a residential area is likely to cause interference, in which case the user at their own expense will be required to take whatever measures may be necessary to correct the interference. Any changes or modifications not expressly approved by the manufacture would void the user's authority to operate the equipment.

SAFETY PRECAUTIONS

To insure the best from the product, please read all instructions carefully before using the device. Save this manual for further reference.

- Unpack the equipment carefully and save the original box and packing material for possible future shipment
- Follow basic safety precautions to reduce the risk of fire, electrical shock and injury to persons.
- Do not dismantle the housing or modify the module. It may result in electrical shock or burn.
- Using supplies or parts not meeting the products' specifications may cause damage, deterioration or malfunction.
- Refer all servicing to qualified service personnel.
- To prevent fire or shock hazard, do not expose the unit to rain, moisture or install this product near water.
- Do not put any heavy items on the extension cable in case of extrusion.
- Do not remove the housing of the device as opening or removing housing may expose you to dangerous voltage or other hazards.
- Install the device in a place with fine ventilation to avoid damage caused by overheat.
- Keep the module away from liquids.
- Spillage into the housing may result in fire, electrical shock, or equipment damage. If an object or liquid falls or spills on to the housing, unplug the module immediately.
- Do not twist or pull the ends of the optical cable. It can cause malfunction.
- Do not use liquid or aerosol cleaners to clean this unit. Always unplug the power to the device before cleaning.
- Unplug the power cord when left unused for a long period of time.
- Information on disposal for scrapped devices: do not burn or mix with general household waste, please treat them as normal electrical wastes.

Introduction

Introduction to SC61E Scaler Switcher

The SC61E Scaler Switcher is a compact 6×1 mini unit with 6 video inputs (4 HDMI, 2 VGA), 2 auxiliary audio inputs (switched following VGA), 1 HDMI output and 3 audio outputs (1 dual-mono analog audio, 1 3.5mm stereo audio, 1 optical audio).

SC61E switches VGA or HDMI/DVI input signal to HDMI output. Besides, the unit up-scales VGA to HDMI output and supports resolution adjustment (6 types in total). It bypass HDMI and provides comprehensive resolution capacities up to 4K& 1080p 3D. The unit also supports RS232&IR control and EDID management.

Features

- **Control** — via Front panel buttons, RS232 commands and IR Remote
- **Switch** — select 6 input source to HDMI output
- **Scale** – scale VGA to HDMI output, Output resolutions selectable to assure preferred output, and supports various output resolutions, such as 1920×1200,1920×1080,1360×768,1280×800,1024×768,1280×720
- Support HDMI 1.4, 4Kx2K&1080P 3D, compliance with HDCP1.4.
- Transmit 4Kx2K signal up to 15m.
- Support EDID management
- Two input switching modes: auto-switching or manual-switching
- Intuitive indicator for power connect states & source selection & output resolution selection
- Support audio & video output management via OUTPUT BLACK button.
- Support online software upgrading
- Compact design for easy operation
- Support power-off memory
- Support hot plug

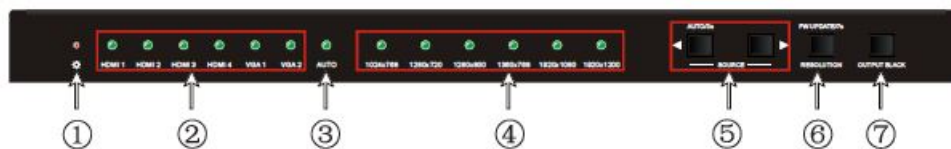
Package List

- 1 x SC61E Compact Scaler Switcher
- 2 x Mounting ears (separate from Compact Scaler Switcher)
- 4 x Screws
- 4 x Plastic cushions
- 1 x Power adapter (DC 5V 3A)
- 2 x 3-pin Pluggable terminal blocks (pitch:3.81mm)
- 1 x IR Receiver
- 1 x IR Remote (Cell battery is not included)
- 1 x User manual

Note: Confirm all the accessories are included, if not, please contact with the dealers.

Panel Description

Front Panel



No.	Name	Description
①	Power LED	Indicator for power status I Off when no power. I Constantly green when the system is in working. I Constantly red when the system is enter in standby.
②	Inputs LED	Constantly green when choosing the corresponding audio source.
③	Auto-switching LED	Constantly green when enter in auto-switching mode.
④	Output resolution selecti on LED	Constantly green when choosing the corresponding output resolution (Input is VGA).
⑤	SOURCE/AUTO	I Audio source selection button: switching circularly between HDMI1, HDMI 2, HDMI3, HDMI4, VGA1, VGA2. dial ◀ to select the previous one, dial ▶ to select the next one. I Switching mode selection button ◀: Press and hold for 3 seconds or more to enter in auto-switching mode, press and hold for 3 seconds or more ag ain to enter in manual-switching mode.
⑥	RESOLUTION/FW UPD ATE	I Output resolution manual switching button for VGA input: selection circular ly among 1920×1200, 1920× 1080, 1360×768, 1280×800, 1024×768, 1280 × 720.default resolution:1920×1080. I Firmware updating button: press and hold for 7 seconds or more to enter i n software updating procedure. All LED blinking when the system is loading firmware
⑦	OUTPUT BLACK	Press to switch on/off audio & Video output. All LED turn off except power L ED when switch off output.

Rear Panel



No.	Name	Description
①	INPUTS	<p> HDMI: 4 HDMI/DVI video source input ports (embedded HDMI audio format PCM).</p> <p> VGA: 2 VGA video source input ports.</p> <p> AUDIO: 2 3.5mm stereo audio source input ports, switched following the corresponding VGA.</p>
②	OUTPUTS	<p> HDMI: HDMI video output port.</p> <p> 3P AUDIO: Dual-Mono analog audio output port.</p> <p> 3.5mm AUDIO: stereo audio output port.</p> <p> OPTICAL: optical audio output port.</p>
③	Control	<p> FIRMWARE: Type-A USB port for updating firmware.</p> <p> RS232: Serial port, 3-pin pluggable terminal block, connect with control terminal (e.g. a PC) to control Compact Scaler Switcher.</p> <p> IR IN: connect to an IR Receiver, to receive IR signal send by corresponding IR remote.</p>
④	DC 5V	Connect to a DC 5V 3A power adapter.

Note: Pictures shown in this manual are for reference only, different model and specifications are subject to real product.

System Connection

Usage Precautions

1. The system should be installed in a clean environment that has temperature and humidity control
2. All of the power switches, plugs, sockets, and power cords should be insulated and safe.
3. All devices should be connected before powering on.

System Diagram

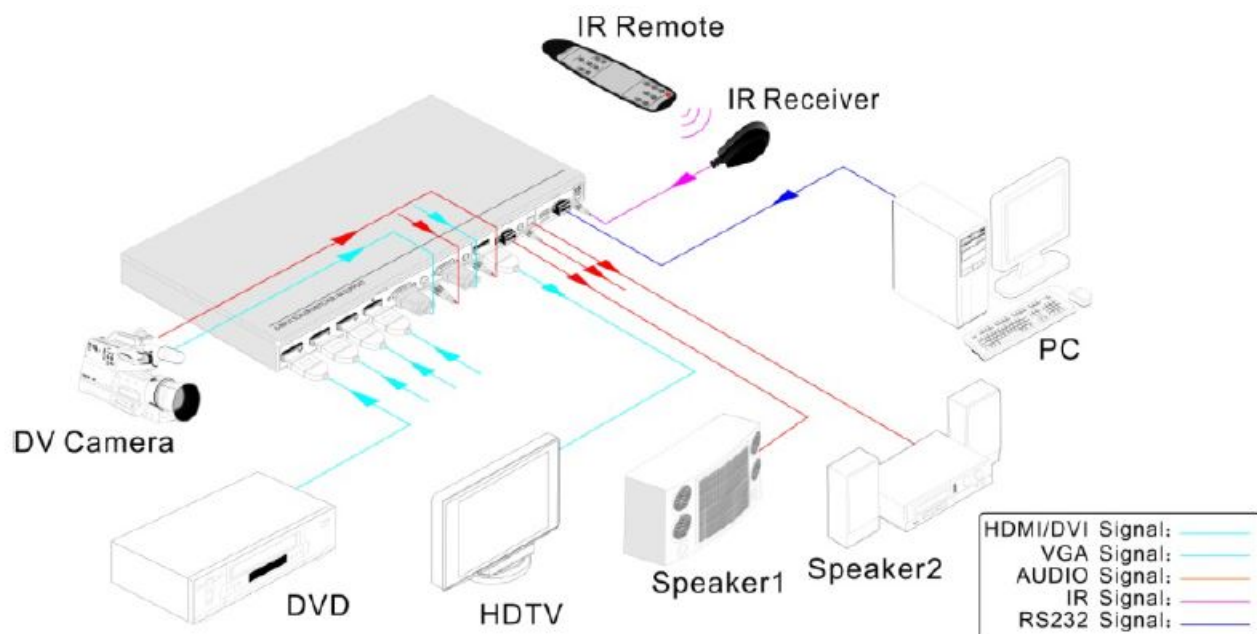


Figure 3- 1 Connection Diagram

Connection Procedures

- **Step 1.** Connect HDMI/DVI sources (e.g. DVD) to HDMI input ports with HDMI cables.
- **Step 2.** Connect VGA sources (e.g. DV Camera) to VGA input ports with VGA cables.
- **Step 3.** Connect sources to the AUDIO input ports with audio cables.
- **Step 4.** Connect a HDMI display (e.g. HDTV) to HDMI output port
- **Step 5.** Connect audio amplifiers (e.g. speaker/earphone) to audio outputs
- **Step 6.** Connect a control device (e.g. PC) to the RS232 port
- **Step 7.** Connect an IR Receiver working voltage:5V to the IR IN port
- **Step 8.** Plug DC 5V 3A power

System Operations

Front Panel Button Control

Front panel buttons can be used for source selections, output resolution adjusting, front panel buttons management, software updating and output screen setting. (Please refer to chapter 2.1).

Here is the detail information for source selections:

There are 6 sources for choose in total, including HDMI1, HDMI2, HDMI3, HDMI4, VGA1, VGA2. Video signals support auto-switching and manual-switching (factory default). Press and hold for SOURCE/AUTO for 3 seconds or more to enter in auto-switching/ manual-switching mode.

Manual-switching:

Dial ◀ to select the previous source, dial ▶ to select the next source.

Auto-switching:

In this mode, select input source via front panel button (◀▶) is not available, but RS232 command and IR remote are able to switch mode. The auto LED turn green and keep on.

The auto-switching mode abides by the following principles:

New input principle

Once detecting a new input signal, SC61E would switch to this new signal automatically.

Rebooting device principle

The SC61E has the ability of power-off memory. If the last switching mode is auto-switching, once rebooted, it will automatically enter auto-switching mode, and then detect all inputs and memorize their connection status for future rebooting using. If the last displayed signal is still available, It will output the signal. If not, the unit will detect all the inputs signals with priority from HDMI1 to VGA2. When detected the first signal, it will transfer to output.

Signal removing principle

Once removing the current display signal, Compact Scaler Switcher will detect all input signals with priority from HDMI1 to VGA2. It will transfer the signal first detected to be available to output devices

Operation Examples:

- Connect HDMI2, HDMI4, and VGA2 ports with source devices, select HDMI4 to outputs.
- Press and hold for the front button SOURCE/AUTO for 3 seconds or more to enter in auto-switching mode.
- Connect HDMI3 with a source device, and then it will choose HDMI3 to output.
- Remove the signal of HDMI3, Compact Scaler Switcher will detect from HDMI1 to VGA2. And when it detects that HDMI2 is available, it will choose HDMI2 to output.
- Cut off the power of Compact Scaler Switcher, then reboot. As the unit is in auto-switching mode, it will choose HDMI2 to output.

RS232 Control

Here we take the software CommWatch.exe as example.

Control Software Operation

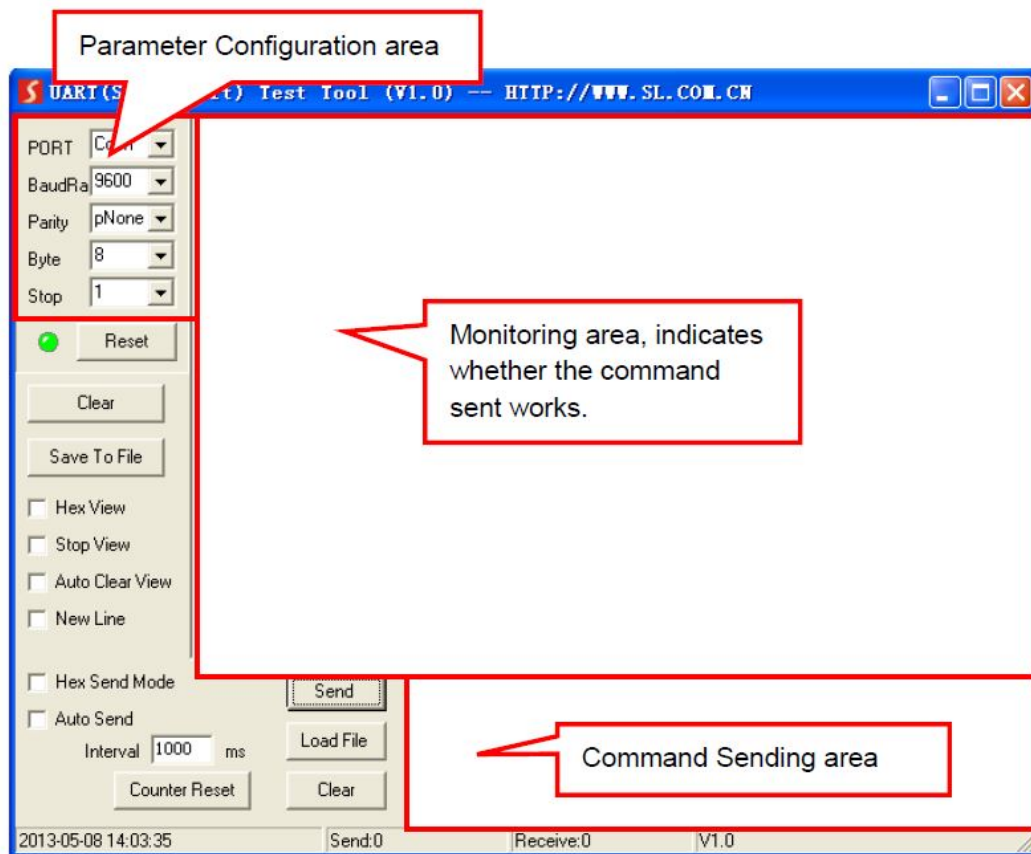
- Installation Copy the control software file to the computer connected with Compact Scaler Switcher.
- Uninstallation Delete all the control software files in corresponding file path.

Basic Settings

Firstly, connect Compact Scaler Switcher with an input device and an output device. Then, connect it with a computer which is installed with RS232 control software. Double-click the software icon to run this software. The icon is showed as below:



The interface of the control software is showed as below:



Please set the parameters of COM number, bound rate, data bit, stop bit, and parity bit correctly, only then will you be able to send the command in Command Sending Area.

RS232 Communication Commands

- **Baud rate:** 9600
- **Data bit:** 8
- **Stop bit:** 1
- **Parity bit:** none

Command	Function	Feedback Example
Switch Commands		
50701%	Switch to HDMI 1 Input	Switch to HDMI 1
50702%	Switch to HDMI 2 Input	Switch to HDMI 2
50703%	Switch to HDMI 3 Input	Switch to HDMI 3
50704%	Switch to HDMI 4 Input	Switch to HDMI 4
50705%	Switch to VGA 1 input	Switch to VGA 1
50706%	Switch to VGA 2 input	Switch to VGA 2

50785%	Enable auto-switching	Auto Switching
50786%	Disable auto-switching	Manual Switching
Resolution Select Commands for VGA Input		
50619%	Change the resolution to 1360X 768	Resolution: 1360×768
50620%	Change the resolution to 1920X1200 WUXGA	Resolution: 1920×1200
50626%	Change the resolution to 1024X768 XGA	Resolution: 1024×768
50627%	Change the resolution to 1280X720 720P	Resolution: 1280×720
50628%	Change the resolution to 1280X800 WXGA	Resolution: 1280×800
50629%	Change the resolution to 1920X1080 1080P	Resolution: 1920×1080
Setup Commands		
50604%	Lock the front panel buttons	Front Panel lock
50605%	Unlock the front panel buttons	Front Panel Unlock
502xx%	Set the brightness to xx (xx ranges from 0 to 99) for VGA input	Brightness: xx
503xx%	Set the contrast to xx (xx ranges from 0 to 99) for VGA input	Contrast: xx
504xx%	Set the saturation to xx (xx ranges from 0 to 99) for VGA input	Saturation: xx
505xx%	Set the sharpness to xx (xx ranges from 0 to 99) for VGA input	Sharpness: xx
50607%	Adjust the color temperature for VGA input	Color Temperature: xx (xx= Cool/ Medium/ Warm/ User.)
50608%	Set the aspect ratio for VGA input	Aspect Ratio: xx (xx= 16:9/ 4:3/ auto/)
50614%	Set the picture mode for VGA input	Picture Mode: xx (xx= dynamic/ standard/ mild/ user)
50615%	Set SM audio mode for VGA input	Sound Mode: xx Sound Mode: xx (xx= standard/ music/ movie/ sports/ user)
50648%	Enable HDMI-embedded audio output	Embedded Audio Output:

		enable
50649%	Disable HDMI-embedded audio output	Embedded Audio Output: disable
50606%	Auto-adjust the input parameter for (VGA only)	VGA Input Auto
50699%	Check the system version	Version Vx.x.x
50697%	Exit standby mode	Wake up!
50797%	Enter standby mode	Go to standby!
50698%	Software update	
50617%	Reset to factory defaults	Factory Reset
50707%	Change the horizontal polarity to the opposite,1 means positive polarity,0 means negative polarity	Hpolarity:0/1
50708%	Change the vertical polarity to the opposite,1 means positive polarity,0 means negative polarity	Vpolarity:0/1
50769%	Read the EDID file(the file must be named EDID.bin) to the flash from U flash disk	
50772%	Set the EDID date of all input ports: bypass mode	EDID:bypass mode
50773%	Set the EDID date of all input ports: 1080P&PCM 2ch	EDID:1080P&PCM 2ch
50774%	Set the EDID date of all input ports:1080P&5.1ch	EDID:1080P&5.1ch
50775%	Set the EDID date of all input ports: 1080P 3D&5.1ch	EDID:1080P3d&5.1ch
50776%	Set the EDID date of all input ports: 1080i&PCM 2ch	EDID:1080i&PCM 2ch
50777%	Set the EDID date of all input ports: 4K&PCM 2ch	EDID:4K&PCM 2ch
50787%	Set the EDID date of all input ports: user	EDID:user
50653%	Switch off audio&video output	Output black:enable
50654%	Switch on audio&videio output	Output black:disable Switch to VGA2
Inquire Commands		

50631%	Check the input source	Input: xx
50632%	Check the output resolution	Resolution: xx
50633%	Check the image mode	Picture Mode: xx
50634%	Check the audio mode	Sound Mode: xx
50635%	Check the image aspect ratio	Aspect Ratio: xx
50636%	Check the brightness	Brightness: xx
50637%	Check the contrast	Contrast: xx
50638%	Check the saturation	Saturation: xx
50639%	Check sharpness	Sharpness: xx
50640%	Check the color temperature	Color Temperature: xx
50652%	Check Digital audio output status	Embedded Audio Output: enable/disable
50655%	Check video&audio output status	50655% Black screen Disable/ Black screen Enable
50709%	Check the present resolution and polarity	1920×1080 Hpolarity:1 Vpolarity:0
50754%	Check the panel locked status	Front Panel Lock/UnLock
50778%	Inquire EDID s	EDID:xx

Adjustment Commands for VGA input

50670%	Move the image to left	Output Position Adjust X xx
50671%	Move the image to right	Output Position Adjust X xx
50672%	Move the image up	Output Position Adjust Y xx
50673%	Move the image down	Output Position Adjust Y xx
50674%	Stretch left from left side (increase image width)	Output Width Adjust xx
50675%	Pull right from left side (decrease image width)	Output Width Adjust xx
50676%	Stretch upwards from top side (increase image height)	Output Height Adjust xx
50677%	Stretch downwards from top side(decrease image height)	Output height adjust xx

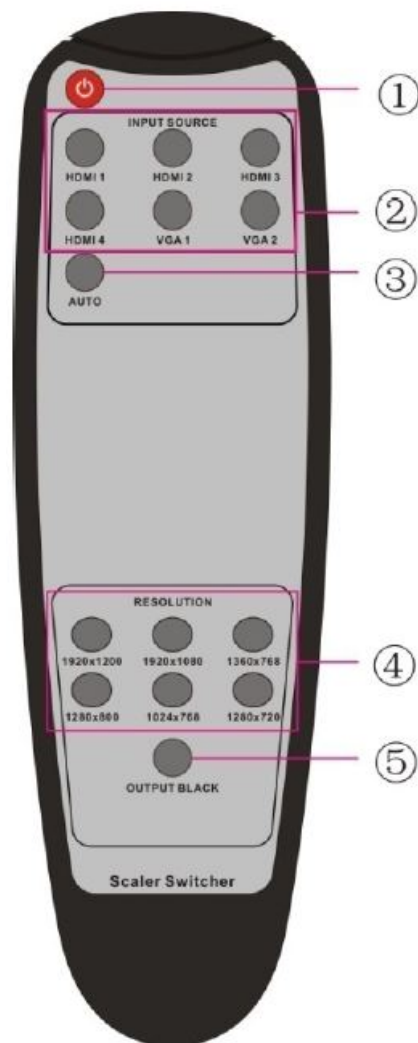
50678%	Enable screen output adjusting	Enter Output Position Adjust
50679%	Disable screen output adjusting	Exit Output Position Adjust

Notes:

1. Please remember to end the commands with the ending symbol "%".
2. EDID commands are for HDMI sources only.
3. The procedure of upgrading EDID data for user:
 - **Step 1.** Copy the file (the file must be named EDID.bin) to the root directory of a USB flash disk.
 - **Step 2.** Plug the USB flash disk to the Compact Scaler Switcher Firmware port on its rear panel.
 - **Step 3.** Send command 50769% to read EDID data from U flash disk, then, send command 50787% to update EDID.

IR control

The unit enables to use the IR remote to control it. Here is brief description of IR remote.



1. Standby button

Enter/ exit standby mode.

2. Input channel selection buttons

Selection video source via pressing the corresponding button (audio switched following the corresponding VGA).

3. Auto button

Enter/ exit auto-switching mode.

4. Resolution selection buttons

Select resolution via pressing the corresponding button.

5. **Output black button**

Press to switch on/off Audio& Video output

Firmware Updating

Compact Scaler Switcher supports firmware updating via USB flash disk. The procedures as follows:

- **Step 1.** Copy the file “MERGE.bin” to the root directory of a USB flash disk. (Make sure the file is copied to the root directory for normal use. The “MERGE.bin” file is provided/ authorized.
- **Step 2.** Plug the USB flash disk to Compact Scaler Switcher FIRMWARE port on its rear panel.
- **Step 3.** Press the button “RESOLUTION/FW UPDATE” for 7 seconds or more to update the firmware automatically. Or send command 50698% to update software.

Specification

Video Input		Video Output	
Input	4 HDMI, 2 VGA	Output	1 HDMI
Input Connector	4 female HDMI (Type-A) 2 female VGA (15Pin)	Output connector	1 female HDMI
Video Signal	HDMI/DVI,VGA	Video Signal	HDMI
Resolution	HDMI: up to 4Kx2K VGA: output resolution selectable		
Standard	Compliant with VGA&DVI HDMI1.4, HDCP 1.4		
Audio Input		Audio Output	
Input	2 stereo audio for VGA	Output	1 Dual-Mono analog audio 1 stereo audio 1 optical audio
Input Connector	1 3.5mm jack	Output Connector	1 3-pin pluggable terminal block (3.81mm) 1 3.5mm jack 1 SPF fiber connector
Control parts			
Control Ports	RS232, IR remote	Pin configuration	2 = TX, 3 = RX, 5 = GND
Panel Control	Front Panel Button		
General			
Power Supply	DC 5V 3A	Power Consumption	3.8 Max
Dimension (W*H*D)	W347 x H28 x D110 mm	Weight	0.63Kg
Temperature	0°C ~ 50°C	Reference Humidity	10% ~ 90%
Transmit Distance	4Kx2K≤15m		

Note: Compact Scaler Switcher supports 4k&1080p 3D HDMI signal, please adopt quality HDMI cables compliant with HDMI1.4 for reliable transmission when connecting.

Supported Input Resolutions

Format	Resolution
HDMI/DVI	800×600@60Hz, 800×600@72Hz, 800×600@75Hz, 1024×768@42Hz, 1024×768@60Hz, 1024×768@70Hz, 1024×768@75Hz, 1024×768@85Hz, 1152×864@75Hz, 1280×768@60Hz, 1280×768@75Hz, 1280×768@85Hz, 1280×960@60Hz, 1280×960@85Hz, 1280×1024@60Hz, 1280×1024@75Hz, 1280×1024@85Hz, 1365×1024@60Hz, 1365×1024@60Hz, 1600×1024@60Hz, 1600×1200@60Hz, 1600×1200@65Hz, 1600×1200@70Hz, 1600×1200@75Hz, 1600×1200@85Hz, 1680×1050@60Hz, 1792×1344@60Hz, 1856×1392@60Hz, 1856×1392@75Hz, 1920×1080@60Hz, 1920×1200@60Hz, 1920×1440@60Hz, 3840×2160@24Hz, 3840×2160@30Hz, 3840×2160@25Hz, 4096×2160@24Hz, 4096×2160@25Hz, 4096×2160@30Hz,
VGA	800×600@60Hz, 800×600@72Hz, 800×600@75Hz, 1024×768@60Hz, 1024×768@70Hz, 1024×768@75Hz, 1280×768@60Hz, 1280×768@75Hz, 1280×960@60Hz, 1280×1024@60Hz, 1280×1024@75Hz, 1365×1024@60Hz, 1365×1024@75Hz, 1600×1024@60Hz, 1600×1200@60Hz, 1600×1200@65Hz, 1600×1200@70Hz, 1600×1200@75Hz, 1680×1050@60Hz, 1792×1344@60Hz, 1920×1080@60Hz, 1920×1200@60Hz

Panel Drawing



Troubleshooting & Maintenance

Problems	Causes	Solutions
Power LED doesn't work or no response to any operation	Fail connection of power cord	Make sure the power cord connection is normal
	Power adapter doesn't suitable	Please replace the power adapter with factory default
No output image on display when switching	Fail or loose connection	Make sure the connection is enable
Output image with snowflake or ghost	Bad quality of the connecting cable	Please replace high quality cable.
	Over the transmission distance	please replace the proper distance cable
Cannot control the device via front panel button	Front panel buttons are locked	Send command 50605% to unlock it
Cannot select source via SOURCE/AUTO buttons	In auto-switching mode	Press it and hold for 3 seconds or more to enter in manual-switching mode
Cannot control the device by control device (e.g. a PC) through RS232 port	Wrong RS232 communication parameters	Type in correct RS232 communication parameters.
	Broken RS232 port	Send it to authorized dealer for checking.
Cannot control the device via IR remote	The battery has run off.	Change for new battery.
	The IR remote is broken.	Send it to authorized dealer for repairing.
	Beyond the effective range of the IR signal or not pointing at the IR receiver	Adjust the distance and angle and point right at the IR receiver.
Cannot control the device	The device has already been broken.	Send it to authorized dealer for repairing.

If your problem persists after following the above troubleshooting steps, seek further help from authorized dealer or our technical support.

Warranty

Limited warranty in respect of Alfatron Products Only

1. This limited warranty covers defects in materials and workmanship in this product.
2. Should warranty service be required, proof of purchase must be presented to the Company. The serial number on the product must be clearly visible and not have been tampered with in any way whatsoever.
3. This limited warranty does not cover any damage, deterioration or malfunction resulting from any alteration, modification, improper or unreasonable use or maintenance, misuse, abuse, accident, neglect, exposure to


excess moisture, fire, improper packing and shipping (such claims must be presented to the carrier), lightning, power surges, or other acts of nature. This limited warranty does not cover any damage, deterioration or malfunction resulting from the installation or removal of this product from any installation, any unauthorized tampering with this product, any repairs attempted by anyone unauthorized by the Company to make such repairs, or any other cause which does not relate directly to a defect in materials and/or workmanship of this product. This limited warranty does not cover equipment enclosures, cables or accessories used in conjunction with this product.

This limited warranty does not cover the cost of normal maintenance. Failure of the product due to insufficient or improper maintenance is not covered.

4. The Company does not warrant that the product covered hereby, including, without limitation, the technology and/or integrated circuit(s) included in the product, will not become obsolete or that such items are or will remain compatible with any other product or technology with which the product may be used.
5. Only the original purchaser of this product is covered under this limited warranty. This limited warranty is not transferable to subsequent purchasers or owners of this product.
6. Unless otherwise specified, the goods are warranted in accordance with the manufacturer's product specific warranties against any defect attributable to faulty workmanship or materials, fair wear and tear being excluded.
7. This limited warranty only covers the cost of faulty goods and does not include the cost of labor and travel to return the goods to the Company's premises.
8. In the event of any improper maintenance, repair or service being carried out by any third persons during the warranty period without the Company's written authorization, the limited warranty shall be void.
9. A 7 (seven) year limited warranty is given on the aforesaid product where used correctly according to the Company's instructions, and only with the use of the Company's components.
10. The Company will, at its sole option, provide one of the following three remedies to whatever extent it shall deem necessary to satisfy a proper claim under this limited warranty:
 1. Elect to repair or facilitate the repair of any defective parts within a reasonable period of time, free of any charge for the necessary parts and labor to complete the repair and restore this product to its proper operating condition.; or
 2. Replace this product with a direct replacement or with a similar product deemed by the Company to perform substantially the same function as the original product; or
 3. Issue a refund of the original purchase price less depreciation to be determined based on the age of the product at the time remedy is sought under this limited warranty.
11. The Company is not obligated to provide the Customer with a substitute unit during the limited warranty period or at any time thereafter.
12. If this product is returned to the Company this product must be insured during shipment, with the insurance and shipping charges prepaid by the Customer. If this product is returned uninsured, the Customer assumes all risks of loss or damage during shipment. The Company will not be responsible for any costs related to the removal or re-installation of this product from or into any installation. The Company will not be responsible for any costs related to any setting up this product, any adjustment of user controls or any programming required for a specific installation of this product.
13. Please be aware that the Company's products and components have not been tested with competitor's products and therefore the Company cannot warrant products and/or components used in conjunction with competitor's products.

14. The appropriateness of the goods for the purpose intended is only warranted to the extent that the goods are used in accordance with the Company's installation, classification and usage instructions.
15. Any claim by the Customer which is based on any defect in the quality or condition of the goods or their failure to correspond with specification shall be notified in writing to the Company within 7 days of delivery or (where the defect or failure was not apparent on reasonable inspection by the Customer) within a reasonable time after discovery of the defect or failure, but, in any event, within 6 months of delivery.
16. If delivery is not refused, and the Customer does not notify the Company accordingly, the Customer may not reject the goods and the Company shall have no liability and the Customer shall pay the price as if the goods had been delivered in accordance with the Agreement.
17. THE MAXIMUM LIABILITY OF THE COMPANY UNDER THIS LIMITED WARRANTY SHALL NOT EXCEED THE ACTUAL PURCHASE PRICE PAID FOR THE PRODUCT.

Documents / Resources

 <p>ALFATRON SC61E Compact Scaler Switcher 6x1</p> <p>All Rights Reserved ALFATRON SC61E 2019.04.01</p>	<p>ALFATRON SC61E Compact Scaler Switcher 6x1 [pdf] User Manual SC61E, Compact Scaler Switcher 6x1, Compact Scaler Switcher</p>
---	---