



ALFATRON ALF-TP405PT Scaler Switcher User Manual

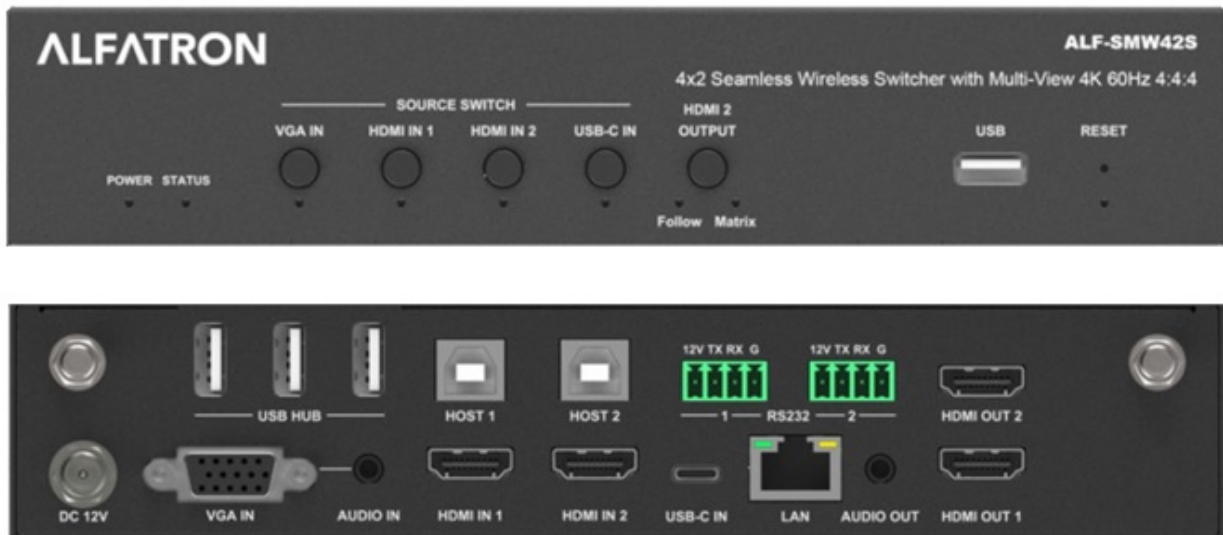
[Home](#) » [ALFATRON](#) » ALFATRON ALF-TP405PT Scaler Switcher User Manual 

Contents

- [1 ALFATRON ALF-TP405PT Scaler Switcher](#)
- [2 SAFETY PRECAUTIONS](#)
- [3 Introduction](#)
- [4 Package List](#)
- [5 Panel Description](#)
- [6 System Connection](#)
- [7 Operations](#)
- [8 Specification](#)
- [9 Panel Drawing](#)
- [10 Troubleshooting & Maintenance](#)
- [11 After-sales Service](#)
- [12 Limited warranty in respect of Alfatron Products Only](#)
- [13 Documents / Resources](#)
- [14 Related Posts](#)

ALFATRON

ALFATRON ALF-TP405PT Scaler Switcher



SAFETY PRECAUTIONS

To ensure the best from the product, please read all instructions carefully before using the device. Save this manual for further reference.

- Unpack the equipment carefully and save the original box and packing material for possible future shipment
- Follow basic safety precautions to reduce the risk of fire, electrical shock and injury to persons.
- Do not dismantle the housing or modify the module. It may result in electrical shock or burn.
- Using supplies or parts not meeting the products' specifications may cause damage, deterioration or malfunction.
- Refer all servicing to qualified service personnel.
- To prevent fire or shock hazard, do not expose the unit to rain, or moisture or install this product near water.
- Do not put any heavy items on the extension cable in case of extrusion.
- Do not remove the housing of the device as opening or removing housing may expose you to dangerous voltage or other hazards.
- Install the device in a place with fine ventilation to avoid damage caused by overheat.
- Keep the module away from liquids.
- Spillage into the housing may result in fire, electrical shock, or equipment damage. If an object or liquid falls or spills on to the housing, unplug the module immediately.
- Do not twist or pull by force ends of the optical cable. It can cause malfunction.
- Do not use liquid or aerosol cleaners to clean this unit. Always unplug the power to the device before cleaning.
- Unplug the power cord when left unused for a long period of time.
- Information on disposal for scrapped devices: do not burn or mix with general household waste, please treat them as normal electrical wastes.

Introduction

Introduction to TPHD405PT-WPB

TPHD405PT-WPB is a Decora style transmitter that installs in a double-gang wall box to provide a convenient interface for HDMI / VGA input sources. It has 1 HDMI IN, 1 VGA IN and 1 HDBaseT OUT with PoC. It supports VGA with full HD scaler, and HDMI 1.4 with 4k& 3D, input signals support auto-switching and manual-switching. The HDBaseT output supports 60m UHD video transmission with PoC, enables bi-directional RS232

communication between TPHD405PT-WPB and remote device.

With its PoC solution, TPHD405PT-WPB can be energized by far-end PoC receiver.

Features

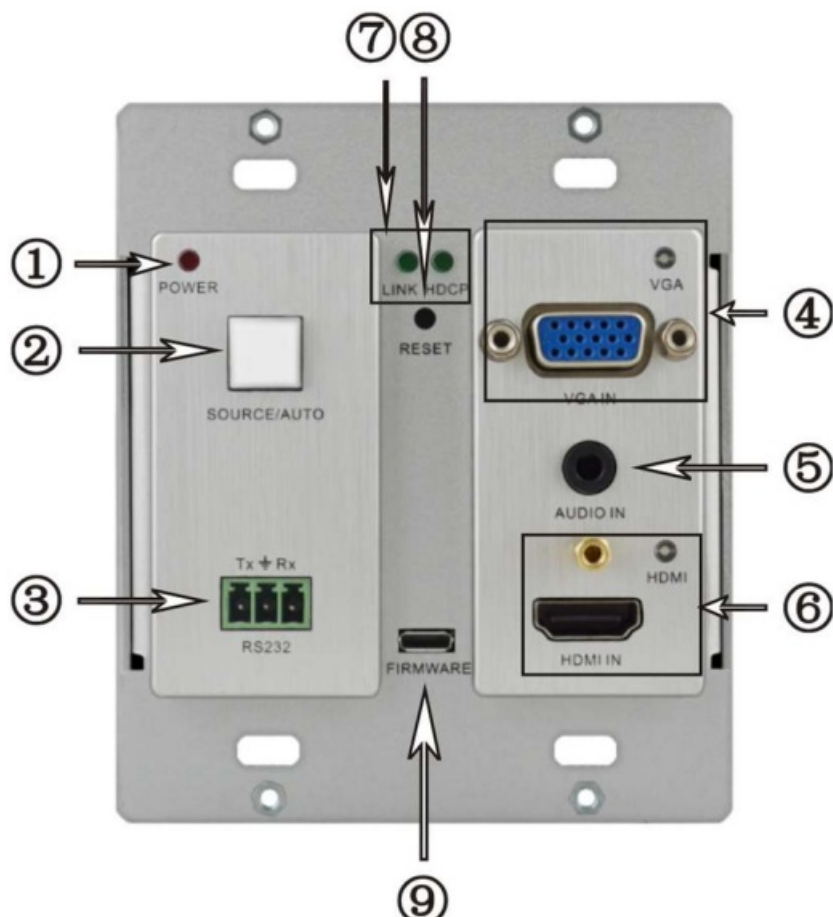
- Selectable HDMI/ VGA with audio input
- Support VGA output resolution up to 1920×1200
- High bandwidth: 10.2Gbps
- In-built scaler function, support scaling HDMI/ VGA signals to match the native resolution of the display
- Transmit HDMI signals up to 4K
- Compliant with HDMI 1.4, support 1080p 3D
- HDCP compliance, equipped with HDCP auto-tracking solution
- Provides auto-switching capability
- Support multiple control methods including front panel buttons, and RS232, support bi-directional RS232 pass-through control.
- Supports firmware upgrading via USB.
- Energize Programmable Control Panel with a DC 12V power output
- Powered by local power pack or PoC connection up to 60m
- Aluminium design for elegant and better cooling

Package List

- 1 x TPHD405PT-WPB
- 4 x Screws
- 3 x Pluggable Terminal Blocks (1 2-pin block, 1 3-pin block, and 1 4-pin block)
- 1 x Face Plate (Selectable)
- 4 x Screws (for the face plate)
- 1 x Power Adapter (DC 12V 2A, selectable)
- 1 x User Manual

Panel Description

Front Panel



No.	Name	Description
①	Power indicator	Illuminates red when power on
②	SOURCE/ AUTO	<p>ü Used as video source selection button (with backlight off): Press to select one source, press again to select next source, switching circularly between HDMI and VGA. The indicator of the selected input source will illuminate green.</p> <p>ü Used as switching mode selection button (with backlight on):</p> <p>Press and hold for 3 seconds or more to enter in Auto- switching mode, the indicator illuminates green when in auto-switching mode. Press and hold for 3 seconds or more again to enter in Manual-switching mode.</p>
③	RS232	Serial port, 3-pin pluggable terminal block, connects with the control terminal to control the TPHPD405PT-WPB, supports bi- directional RS232 control (send control signal from local or receive control signal sent from far-end devices).
④	VGA IN	Connect with VGA source device.

		<p>The indicator:</p> <ul style="list-style-type: none"> ü illuminate yellow when there is VGA signal input ü illuminate green when the signal source is chosen as input source ü turn off when there is no VGA input signal
⑤	AUDIO IN	Connect with the audio output socket of VGA source device, deliver synchronous audio source with VGA signal source when choosing VGA as source signal.
⑥	HDMI IN	<p>Connect with HDMI source device.</p> <p>The indicator:</p> <ul style="list-style-type: none"> ü illuminate yellow when there is HDMI signal input ü illuminate green when the signal source is chosen as input source ü turn off when there is no HDMI input signal
⑦	LINK & HDCP	<ul style="list-style-type: none"> ü LINK: Twisted Pair Link status indicator, illuminate green when successfully connected. ü HDCP: HDCP compliance indicator, illuminate green when the source signals is with HDCP; blink when it is not with HDCP; and turn off when there is no source signal.
⑧	RESET	Press the button to reboot TPHD405PT-WPB.
⑨	FIRMWARE	<p>USB port, used for firmware update</p> <p>Plug a flash disk or other storage device with update file (MERGE.bin), and send command 50698% to update firmware.</p>

Side Panel



HDBaseT OUT: RJ45 port, connect with receiver via a CAT5e/6 cable to deliver Audio/ Video signals, support PoC.

Note: TPHD405PT-WPB support unidirectional PoC, i.e. it can be energized by far-end receiver but it can't energize far-end receiver.

Rear Panel



No.	Name	Description
①	Power In	Power in port, 2-pin pluggable terminal block, connect with DC 12V power adapter .
②	Power Out	Power out port, connect with Programmable Control Panel to energize it with a 12 V power output.
③	RS232	Serial port, connects with a far-end receiver, supports bi- directional RS232 control (send control signal from local or receive control signal sent from far-end devices).

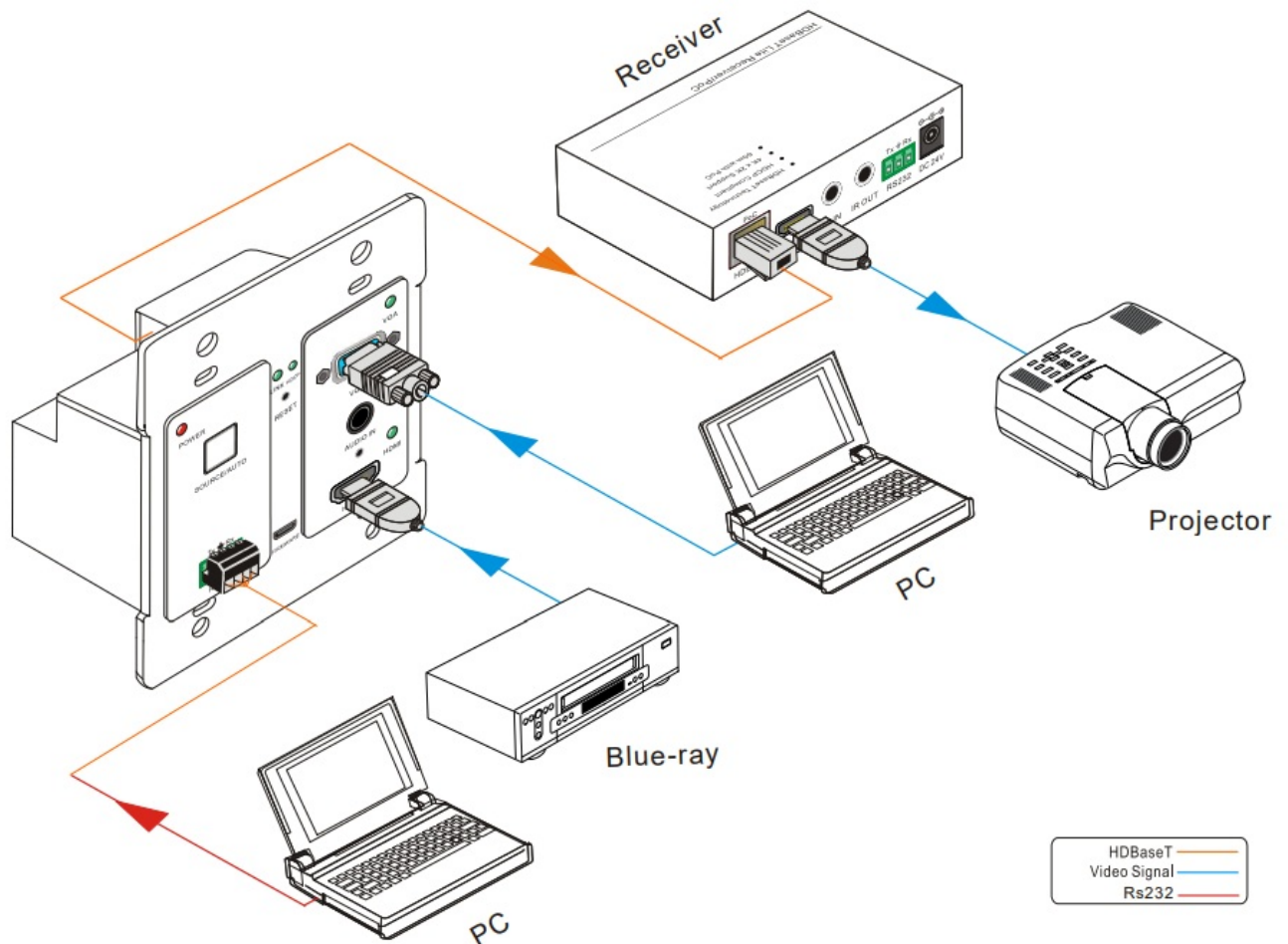
Note: Pictures shown in this manual are for reference only, different model and specifications are subject to real product.

System Connection

Usage Precautions

1. System should be installed in a clean environment and has a prop temperature and humidity.
2. All of the power switches, plugs, sockets and power cords should be insulated and safe.
3. All devices should be connected before power on.

System Diagram



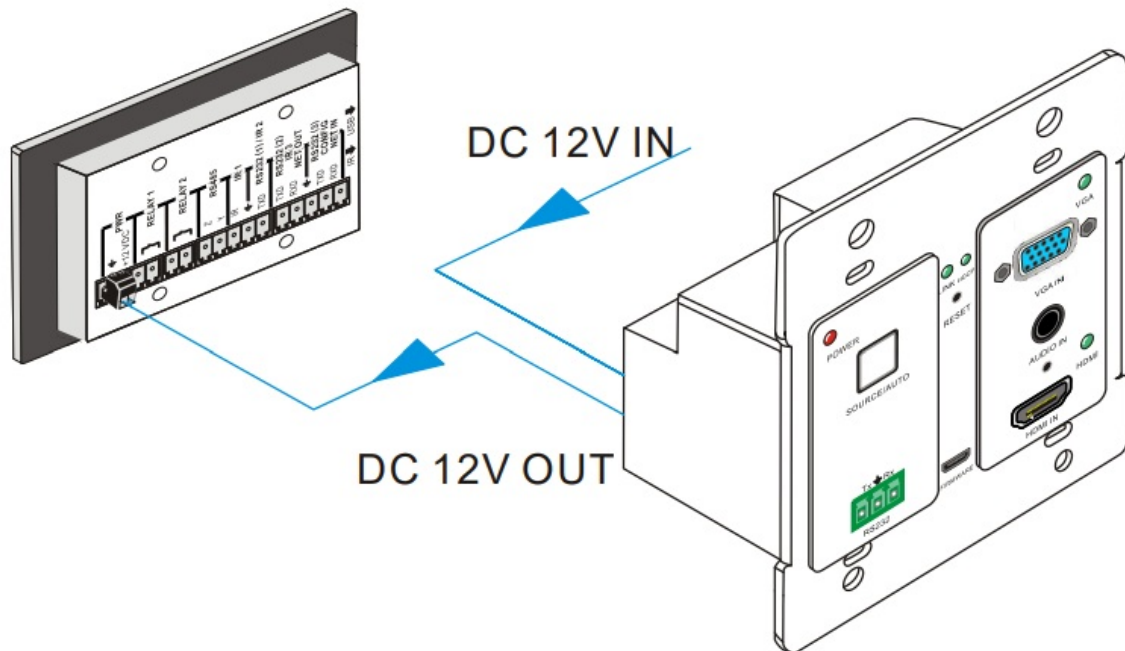
Connection Procedure

- Connect HDMI source device (e.g. Blue-ray DVD) to HDMI input ports of TPHD405PT-WPB with HDMI cable. Connect a VGA source device (e.g. PC) to the VGA input port of TPHD405PT-WPB with VGA cable.
- Connect an HDBaseT Receiver to the HDBaseT port on the rear panel with twisted pair.
- Connect a HDMI display to the HDMI OUT port of HDBaseT Receiver.
- Connect a control terminal to the RS232 port on the front panel of HDBaseT Receiver.
- Connect control device (e.g. PC) to RS232 port of TPHD405PT-WPB or HDBaseT Receiver (bi-directional RS232 control, either is available).
- Connect DC 24V power adaptor to the power port of HDBaseT Receiver, TPHD405PT-WPB is able to get power from HDBaseT Receiver with PoC solution.

Note: TPHD405PT-WPB supports unidirectional PoC, i.e, TPHD405PT-WPB can get power from far-end PoC devices with PoC function while it can't energize far-end PoC devices when the power supply is connected to TPHD405PT-WPB.

Energizing Programmable Control Panel

TPHD405PT-WPB has a 12V power output port on the rear panel. Connect the 12V power output port of TPHD405PT-WPB to the power port of Programmable Control Panel (refer to the following figure), TPHD405PT-WPB is capable of energizing Programmable Control Panel.



PoC Solution

TPHD405PT-WPB has an HDBaseT OUTPUT port on the rear panel, which can extend HDMI/ VGA signals up to 60m. Meanwhile it also supports PoC, which allows several terminals share the same power supply and eliminates the need for extra power supply at the remote nodes. Connect a DC 24V power adapter to the power port of HDBaseT Receiver, TPHD405PT-WPB can be energized synchronously with PoC solution, see the picture below:

Application

TPHD405PT-WPB has a good application in various occasions, such as computer realm, monitoring, conference room, big screen displaying, television education, command & control center and smart home etc.

Operations

Operations of front panel buttons

TPHD405PT-WPB has a channel switching button on the front panel, through which users can switch input source signals. It supports both manual switching and auto switching. (Default: Auto-switching) Press and hold the switching button for 3 seconds or send command "50770%" and "50771%" to switch between the two modes.

Switching modes:

- **Auto-switching mode**

In this mode, the indicator will illuminate green, and TPHD405PT-WPB will recognize the last connected source device as input source automatically. Disconnect the present source device, it will deliver the other source signal (if there is input signal on the other source).

- **Manual switching mode**

In this mode, the indicator will remain off. Press the switching button to select input source, it will switch circularly between HDMI and VGA. Or switch it by sending RS232 commands.

The indicator of the selected input source will illuminate green.

RS232 Control

As RS232 can be transmitted bi-directionally between TPHD405PT-WPB and HDBaseT Receiver, so it is able to control a third party RS232 device from local or control TPHD405PT-WPB from remote. When to control a third party RS232 device, the baud rate of this device should be 2400, 4800, 9600, 19200, 38400, 57600 or 115200.

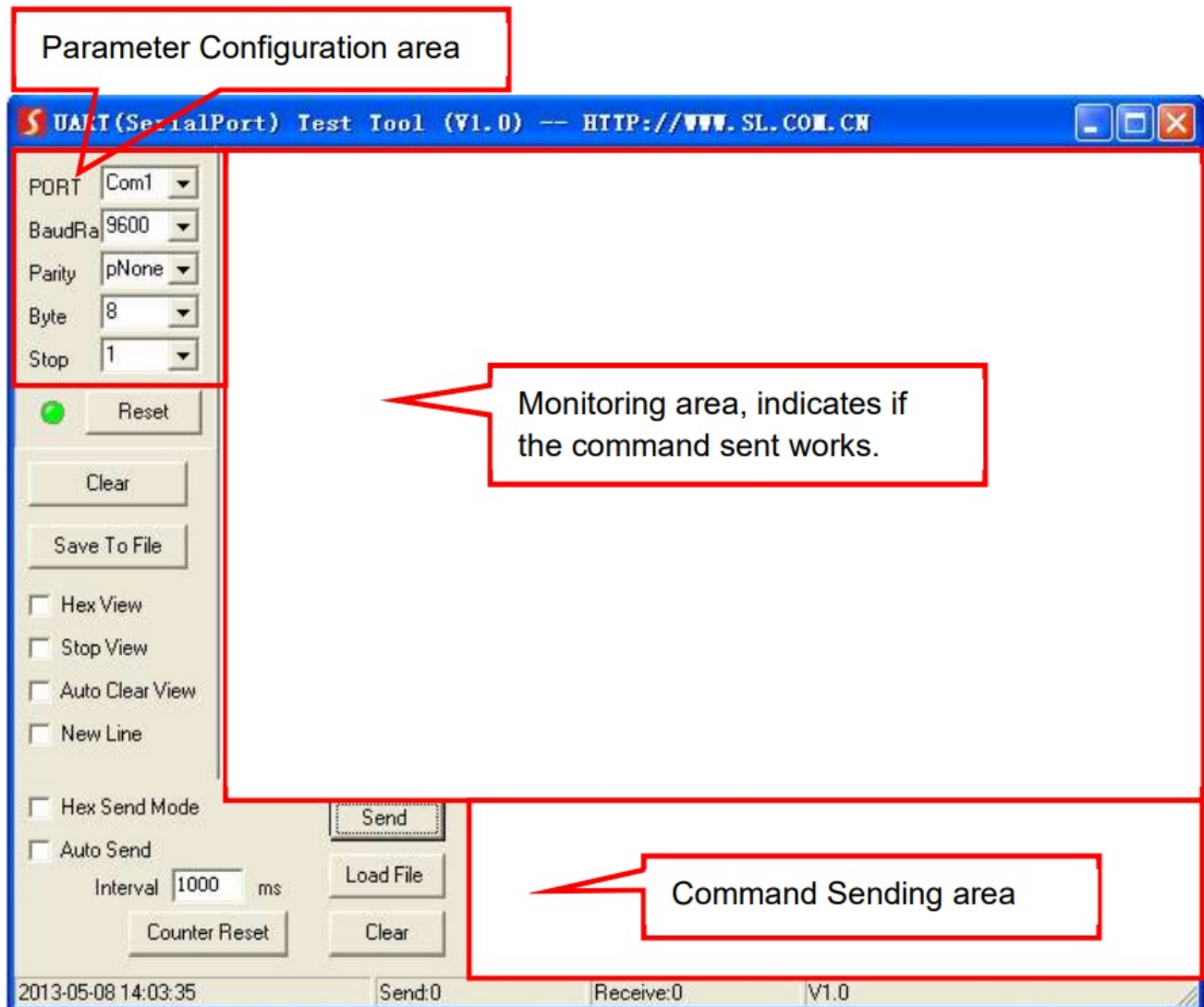
Installation/uninstallation of RS232 Control Software

- **Installation** Copy the control software file to the computer connected with TPHD405PT-WPB.
- **Uninstallation** Delete all the control software files in corresponding file path.

Basic Settings

First, connect TPHD405PT-WPB with all input devices and output devices needed, then to connect it with a computer which is installed with RS232 control software. Double-click the software icon to run this software. Here we take the software CommWatch.exe as example. The icon is showed as below:

The interface of the control software is showed as below:



Please set the parameters of COM number, bound rate, data bit, stop bit and the parity bit correctly, and then you are able to send command in Command Sending Area.

RS232 Communication Commands

Command	Function	Feedback Example
Switch Commands		
50701%	Switch to HDMI input	Switch to HDMI
50704%	Switch to VGA input	Switch to VGA
50705%	Change the horizontal polarity to the opposite	Hpolarity:0/1

50706%	Change the vertical polarity to the opposite	Vpolarity:0/1
50707%	Check the present resolution and polarity	1920×1080 Hpolarity:1 Vpolarity:0
50770%	Enable auto-switching	Auto Switching
50771%	Disable auto-switching	Manual Switching

Resolution Commands		
50619%	Change the resolution to 1360X768 HD	Resolution: 1360×768
50626%	Change the resolution to 1024X768 XGA	Resolution: 1024×768
50627%	Change the resolution to 1280X720 720P	Resolution: 1280×720
50628%	Change the resolution to 1280X800 WXGA	Resolution: 1280×800
50629%	Change the resolution to 1920X1080 1080P	Resolution: 1920×1080
50620%	Change the resolution to 1920X1200 WUXGA	Resolution: 1920×1200
50621%	Change the resolution to 1600X1200 UXGA	Resolution: 1600×1200

Setup Commands		
-----------------------	--	--

502xx%	Set the brightness to xx. XX ranges from 00 to 99	Brightness: xx
503xx%	Set the contrast to xx. XX ranges from 00 to 99	Contrast: xx
504xx%	Set the saturation to xx. XX ranges from 00 to 99	Saturation: xx
505xx%	Set the sharpness to xx. XX ranges from 00 to 99	Sharpness: xx

50606%	Auto-adjust the input parameter	VGA Input Auto
50607%	Adjust the color temperature	Color Temperature: xx (xx can be medium, warm, user, or cool)
50608%	Set the aspect ratio	Aspect Ratio: xx (xx can be 16:9, 4:3, or auto.)
50614%	Set the picture mode	Picture Mode: xx (xx can be dynamic, standard, mild, or user.)
50699%	Check the system version	Version Vx.x.x
50779%	Switch to RS232 mode 1, enable scaler to control far-end devices Default	RS232 Mode 1: RS232 Control Scaler & Remote.
50780%	Switch to RS232 mode 2, enable far-end devices to control scaler	RS232 Mode 2: RS232 & Remote Control Scaler.
50790%	Set the HDCP status of HDMI output socket to Active	HDCP Active
50791%	Set the HDCP status of HDMI output socket to On	HDCP On

50792%	Set the HDCP status of HDMI output socket to Off	HDCP Off
50698%	Software update	
50617%	Reset to factory default	
Inquire Commands		
50632%	Check the output resolution	Resolution: xx
50633%	Check the picture mode	Picture Mode: xx
50793%	Check HDCP status	HDCP Off HDCP On HDCP Active
50635%	Check the image aspect ratio	Aspect Ratio: xx
50636%	Check the brightness	Brightness: xx

50637%	Check the contrast	Contrast: xx
50638%	Check the saturation	Saturation: xx
50639%	Check sharpness	Sharpness: xx
50640%	Check the color temperature	Color Temperature: xx
Adjustment Commands		
50678%	Enable screen output adjusting	Enter Output Position Adjust
50679%	Disable screen output adjusting	Exit Output Position Adjust
50670%	Move the image to left	Output Position Adjust X xx
50671%	Move the image to right	Output Position Adjust X xx
50672%	Move the image up	Output Position Adjust Y xx
50673%	Move the image down	Output Position Adjust Y xx
50674%	Pull left from right side (decrease image width)	Output Width Adjust xx
50675%	Stretch right from right side (increase image width)	Output Width Adjust xx
50676%	Stretch upwards from bottom side (decrease image height)	Output Height Adjust xx

50677%	Stretch downwards from bottom side (increase image height)	Output Height Adjust xx
EDID Commands		
50772%	EDID pass-through	EDID: bypass mode
50773%	Set EDID data to 1080P PCM 2.0ch	EDID:1080P&PCM 2ch
50774%	Set EDID data to 1080P Dolby 5.1	EDID:1080P&5.1ch
50775%	Set EDID data to 1080P3D Dolby 5.1	EDID:1080P3d&5.1ch
50776%	Set EDID data to 1080i PCM 2.0ch	EDID:1080i&PCM 2ch
50777%	Set EDID data to 4K*2K PCM 2.0ch	EDID:4K&PCM 2ch
50778%	Check EDID data	EDID:1080P&PCM 2ch EDID:1080P&5.1ch EDID:1080P3d&5.1ch EDID:4K&PCM 2ch
50799%	Program EDID file, send EDID data within 10s	Waiting for edid within 10 secs!

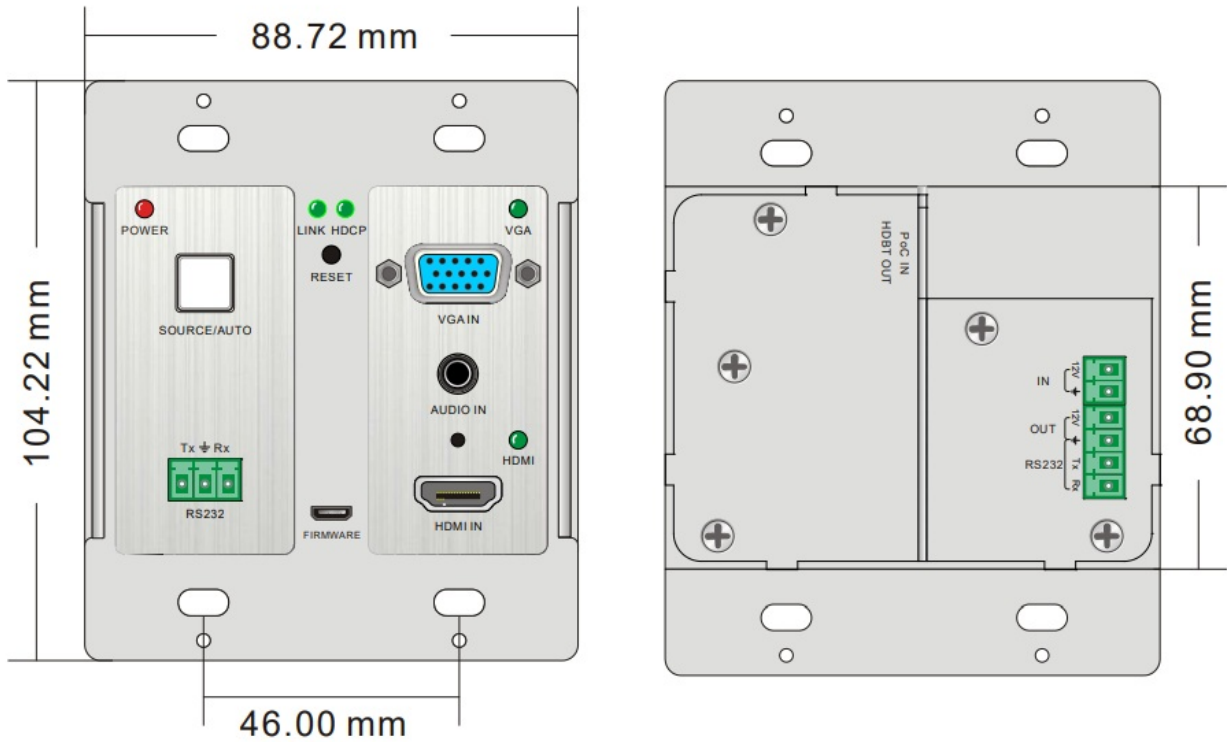
Note:

1. Commands with grey background are for VGA sources only.
2. EDID commands are for HDMI sources only.

Specification

Video			
Input	1 HDMI, 1 VGA	Output	1 HDBaseT
Input Connector	1 19-pin Type A HDMI female; 1 15-pin VGA	Output Connector	1 RJ45
Transmission Mode	HDBaseT		
Audio			
Input	1 synchronous VGA audio		
Input Connector	1 3.5mm stereo jack		
Frequency Response	20Hz~20KHz		
Impedance	10Ω	SNR	>85db@20Hz~20KHz
Control Parts			
Control Ports	1 3-pin RS232 socket on front panel 1 3-pin RS232 socket on rear panel (share the ground pole with 12V OUT)		
General			
Resolution	VGA: 800 x600, 1024 x 768, 1280 x 800,1280 x 1024, 1440 x 900,1600 x 1200, 1920 x 1080, 1920 x 1200; HDMI: 4Kx2K, 1080p 3D, 1080P(HD)/1080i/720P/576P/576i/480P/480i		
Transmission Distance	1080P≤60M (PoC) 4Kx2K≤40M (PoC)		
Bandwidth	10.2Gbps		
HDMI Standard	Support HDMI1.4 and HDCP		
Chassis Dimension	Decora style two gang	Power Supply	DC 12V 2A; 9.6W
Temperature	-10 ~ +40℃	Reference Humidity	10% ~ 90%
Dimension (W*H*D)	104.5 x 89 x 44 mm	Weight	0.29Kg

Panel Drawing



Troubleshooting & Maintenance

Problems			Causes		Solutions	
Color losing or no video signal output in HDMI display			The connecting cables may not be connected correctly or it may be broken		Check whether the cables are connected correctly and in working condition.	
No HDMI signal output in the device while local HDMI input is in normal working state						
Output snowflake	image	with				
POWER indicator doesn't work or no respond to any operation			Loose or failed power cord connection		Ensure the power connection is good	cord
Cannot control the device by control device (e.g. a PC) through RS232 port			Wrong communication parameters	RS232	Make sure the RS232 communication parameters are correct.	
Static becomes stronger when connecting the video connectors			bad grounding		Check the grounding and make sure it is connected well.	
Cannot be controlled through RS232 port or front panel buttons			The unit may have already been broken		Send it to authorized dealer for repairing.	

After-sales Service

If there appear some problems when running TPHD405PT-WPB, please check and deal with the problems

reference to this user manual. Any transport costs are borne by the users during the warranty.

Product Limited Warranty:

- We warrant that our products will be free from defects in materials and workmanship for three years, which starts from the first day you buy this product (The purchase invoice shall prevail).
- Proof of purchase in the form of a bill of sale or receipted invoice which is evidence that the unit is within the Warranty period must be presented to obtain warranty service.

What the warranty does not cover:

- Warranty expiration.
- Factory applied serial number has been altered or removed from the product.
- Damage, deterioration or malfunction caused by:
 - Normal wear and tear
 - Use of supplies or parts not meeting our specifications
 - No certificate or invoice as the proof of warranty.
- The product model showed on the warranty card does not match with the model of the product for repairing or had been altered.
- Damage caused by force majeure.
- Servicing not authorized
- Any other causes which does not relate to a product defect
- Delivery, installation or labor charges for installation or setup of the product

Technical Support: Email to our after-sales department or make a call, please inform us the following information about your cases.

- Product version and name.
- Detailed failure situations.
- The formation of the cases.

Limited warranty in respect of Alfatron Products Only

- This limited warranty covers defects in materials and workmanship in this product.
- Should warranty service be required, proof of purchase must be presented to the Company. The serial number on the product must be clearly visible and not have been tampered with in any way whatsoever.
- This limited warranty does not cover any damage, deterioration or malfunction resulting from any alteration, modification, improper or unreasonable use or maintenance, misuse, abuse, accident, neglect, exposure to excess moisture, fire, improper packing and shipping (such claims must be presented to the carrier), lightning, power surges, or other acts of nature. This limited warranty does not cover any damage, deterioration or malfunction resulting from the installation or removal of this product from any installation, any unauthorized tampering with this product, any repairs attempted by anyone unauthorized by the Company to make such repairs, or any other cause which does not relate directly to a defect in materials and/or workmanship of this product. This limited warranty does not cover equipment enclosures, cables or accessories used in conjunction

with this product.


This limited warranty does not cover the cost of normal maintenance. Failure of the product due to insufficient or improper maintenance is not covered.

- The Company does not warrant that the product covered hereby, including, without limitation, the technology and/or integrated circuit(s) included in the product, will not become obsolete or that such items are or will remain compatible with any other product or technology with which the product may be used.
- Only the original purchaser of this product is covered under this limited warranty. This limited warranty is not transferable to subsequent purchasers or owners of this product.
- Unless otherwise specified, the goods are warranted in accordance with the manufacturer's product specific warranties against any defect attributable to faulty workmanship or materials, fair wear and tear being excluded.
- This limited warranty only covers the cost of faulty goods and does not include the cost of labor and travel to return the goods to the Company's premises.
- In the event of any improper maintenance, repair or service being carried out by any third persons during the warranty period without the Company's written authorization, the limited warranty shall be void.
- A 5 (five) year limited warranty is given on the aforesaid product where used correctly according to the Company's instructions, and only with the use of the Company's components.
- The Company will, at its sole option, provide one of the following three remedies to whatever extent it shall deem necessary to satisfy a proper claim under this limited
- Elect to repair or facilitate the repair of any defective parts within a reasonable period of time, free of any charge for the necessary parts and labor to complete the repair and restore this product to its proper operating condition.; or
- Replace this product with a direct replacement or with a similar product deemed by the Company to perform substantially the same function as the original product; or
- Issue a refund of the original purchase price less depreciation to be determined based on the age of the product at the time remedy is sought under this limited warranty.
- The Company is not obligated to provide the Customer with a substitute unit during the limited warranty period or at any time thereafter.
- If this product is returned to the Company this product must be insured during shipment, with the insurance and shipping charges prepaid by the Customer. If this product is returned uninsured, the Customer assumes all risks of loss or damage during shipment. The Company will not be responsible for any costs related to the removal or re-installation of this product from or into any installation. The Company will not be responsible for any costs related to any setting up this product, any adjustment of user controls or any programming required for a specific installation of this product.
- Please be aware that the Company's products and components have not been tested with competitor's products and therefore the Company cannot warrant products and/or components used in conjunction with competitor's products.
- The appropriateness of the goods for the purpose intended is only warranted to the extent that the goods are used in accordance with the Company's installation, classification and usage instructions.
- Any claim by the Customer which is based on any defect in the quality or condition of the goods or their failure to correspond with specification shall be notified in writing to the Company within 7 days of deliver or (where the defect or failure was not apparent on reasonable inspection by the Customer) within a reasonable time after discovery of the defect or failure, but, in any event, within 6 months of delivery.
- If delivery is not refused, and the Customer does not notify the Company accordingly, the Customer may not

reject the goods and the Company shall have no liability and the Customer shall pay the price as if the goods had been delivered in accordance with the Agreement.

- THE MAXIMUM LIABILITY OF THE COMPANY UNDER THIS LIMITED WARRANTY SHALL NOT EXCEED THE ACTUAL PURCHASE PRICE PAID FOR THE PRODUCT.

Documents / Resources

 <small>ALFATRON ELECTRONICS GmbH</small> ALF-TP405PT Scaler Switcher	ALFATRON ALF-TP405PT Scaler Switcher [pdf] User Manual ALF-TP405PT, Scaler Switcher, Switcher
--	--

Manuals+.