



Amazon Alexa Installation Guide

[Home](#) » [alexa](#) » Amazon Alexa Installation Guide 

Contents

- [1 Amazon Alexa](#)
- [2 Link Skill](#)
- [3 Documents / Resources](#)
- [4 Related Posts](#)



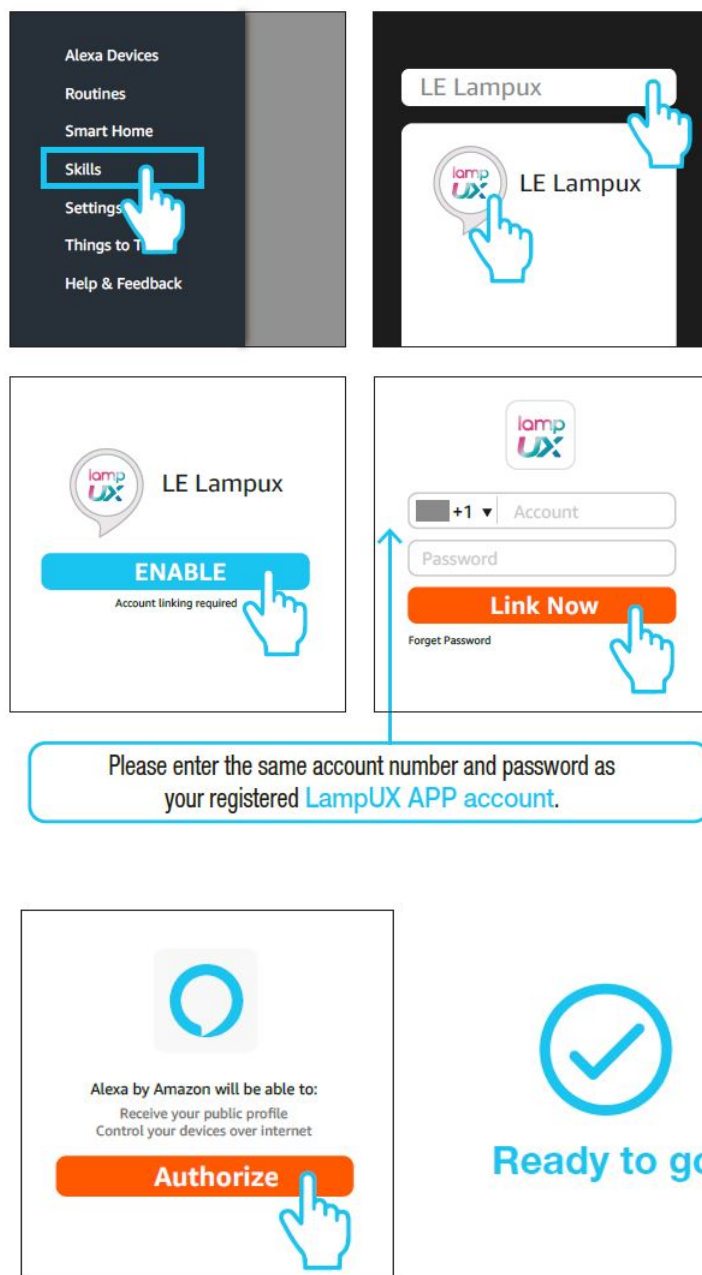
Amazon Alexa



How do I connect to Amazon Alexa?

Please make sure your Alexa device is successfully paired to the network first.

Link Skill



Common Commands

Now you can control your smart device with Echo. For example your bedroom light:

Alexa, turn on/off bedroom light.

(Turn on/off the light)

Alexa, set bedroom light to 50 percent.

(Set the light to any brightness)

Alexa, brighten/dim bedroom light.


(Increase/weaken the brightness of the light)

Alexa, set bedroom light to green.

(Adjust the color of the light)



Documents / Resources

 <p>The screenshot shows the Alexa app's 'Link Skill' screen. At the top, it says 'How do I connect to Amazon Alexa?' and 'Please make sure your Alexa device is successfully paired to the network first.' Below this is a 'Link Skill' button. The main area shows a list of skills to link, with 'Lamp' selected. It displays a 'Link Skill' button and a 'Link Skill' button. Below this, it says 'Please enter the name of your smart device and press the link skill button to link it.' At the bottom, it says 'Ready for go!'.</p>	<p>alexa Amazon Alexa [pdf] Installation Guide</p> <p>alexa, Amazon Alexa, Link Skill</p>
--	---