



ALESIS MELODY 61 MKII 61 Key Portable Keyboard with Built In Speakers User Guide

[Home](#) » [Alesis](#) » ALESIS MELODY 61 MKII 61 Key Portable Keyboard with Built In Speakers User Guide 

ALESIS MELODY 61 MKII 61 Key Portable Keyboard with Built In Speakers User Guide



Contents

- [1 Introduction](#)
- [2 Setup](#)
- [3 Features](#)
- [4 Operation](#)
- [5 Appendix](#)
- [6 Documents / Resources](#)
 - [6.1 References](#)
- [7 Related Posts](#)

Introduction

Box Contents

- Melody 61 MKII

- Microphone
- Headphones
- Music Rest
- Keyboard Stand
- Bench
- Power Adapter
- User Guide
- Safety & Warranty Manual

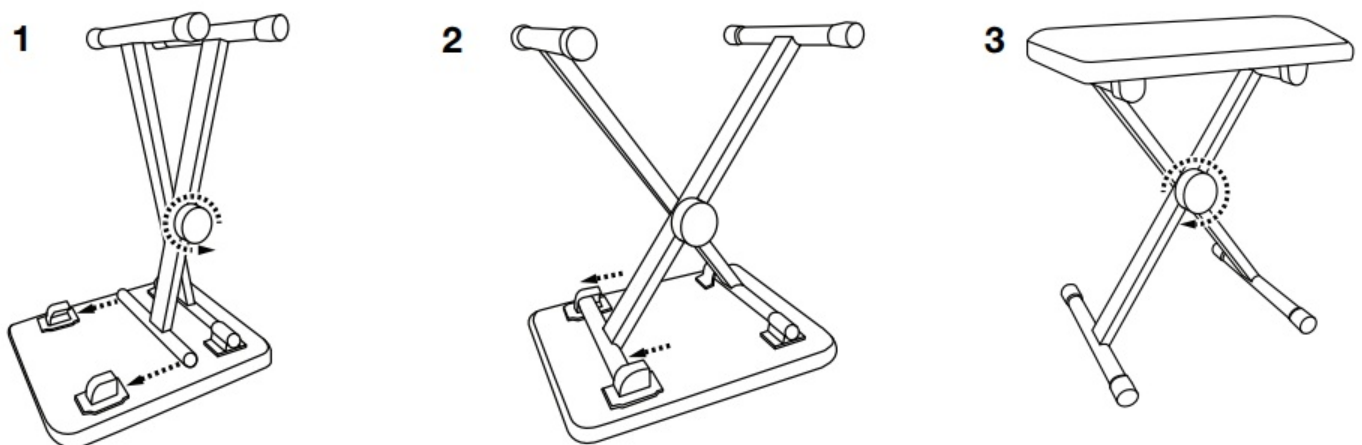
Support

For the latest information about this product (system requirements, compatibility information, etc.) and product registration, visit alesis.com.

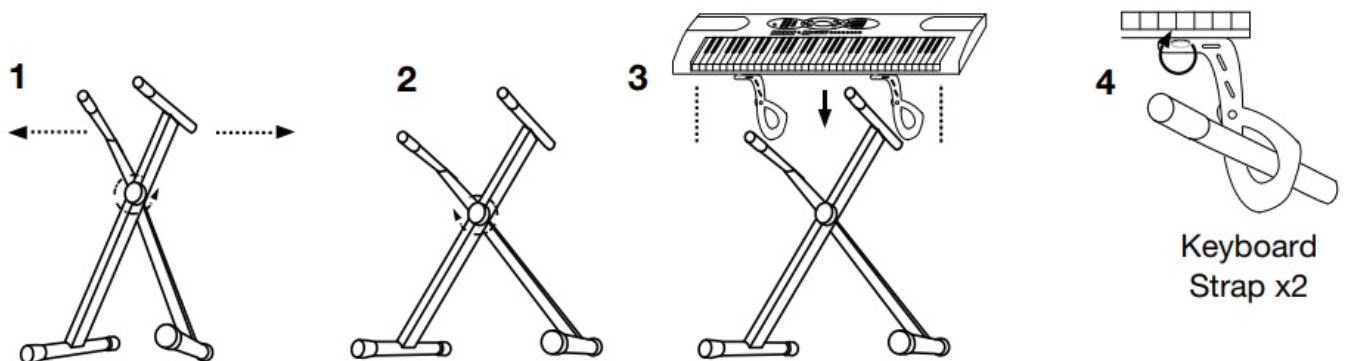
For additional product support, visit alesis.com/support.

Setup

Bench

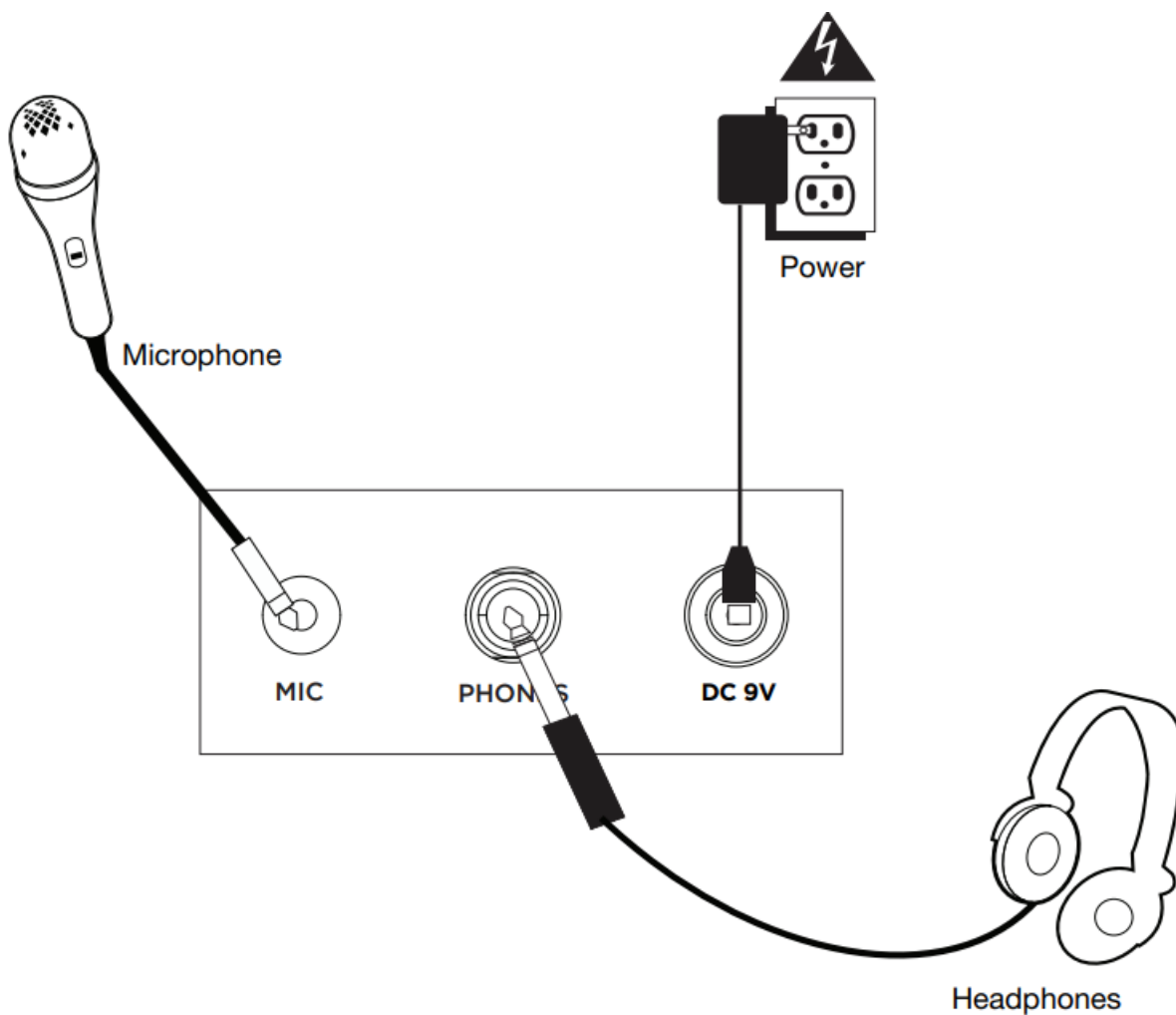


Stand



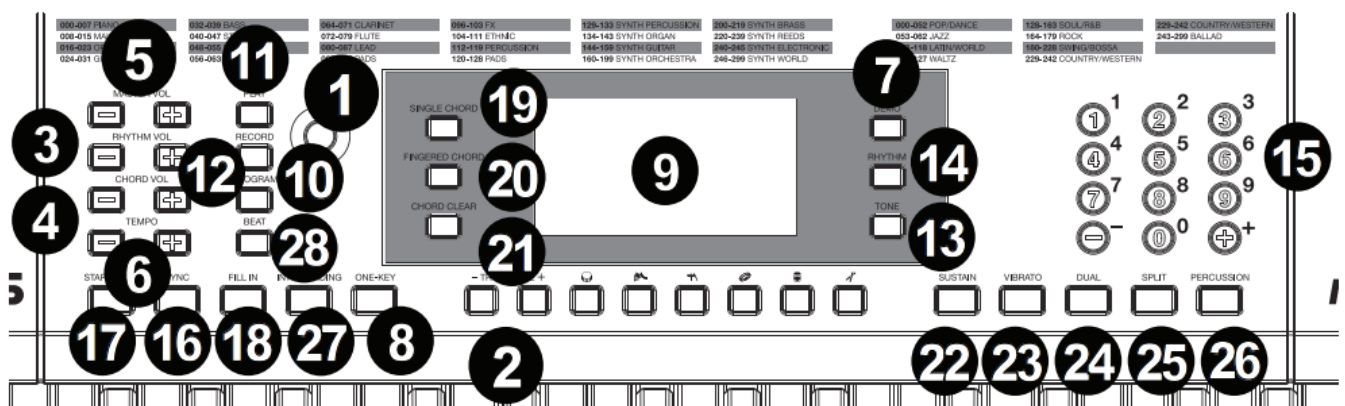
Connection Diagram

Items not listed in Introduction > Box Contents are sold separately.



Features

Top Panel



1. Power On/Off: Press this button to turn the keyboard on or off.
2. Transpose: Press the Transpose + or Transpose – button to increase or decrease the pitch of the keyboard by a half-step. Press the Transpose + and Transpose – buttons simultaneously to reset to the default value.
3. Rhythm Volume: Press the Rhythm Vol + or Rhythm Vol – button to increase or decrease accompaniment rhythm volume. Press the Rhythm Vol + and Rhythm Vol – simultaneously to reset to the default value.
4. Chord Volume: Press the Chord Vol + or Chord Vol – button to increase or decrease accompaniment chord volume. Press the Chord Vol + and Chord Vol – buttons simultaneously to reset to the default value.
5. Master Volume: Press the Master Vol + or Master Vol – button to increase or decrease the overall volume for

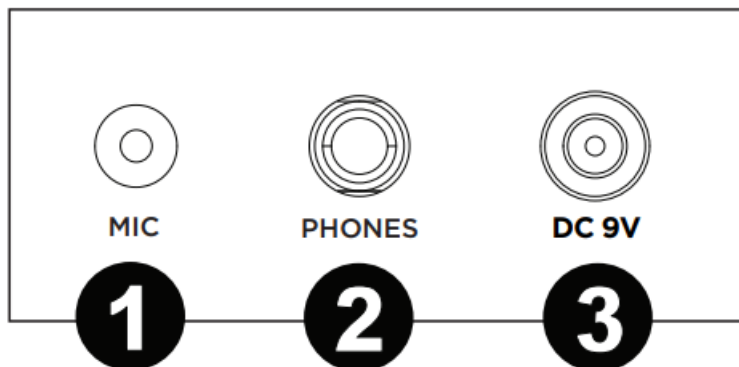
the sounds and rhythms. Press the Master Vol + and Master Vol – buttons simultaneously to reset to the default value.

6. Tempo: Press the Tempo + or Tempo – button to increase or decrease the speed of the rhythm and chord accompaniment, demo song and/or metronome. Press the Tempo + and Tempo – buttons simultaneously to reset to the default value.
7. Demo: Press this button to begin playback of the demonstration songs. Use the number buttons or + or – buttons to select another demonstration song. Press this button again to stop the playback.
8. One-Key: Press this button to start the one-key function. This function lets you play along with the demo songs by pressing any key to the rhythm of the song. Use the number buttons or the + or – buttons to select another demonstration song.
9. LED Display: Shows the various keyboard functions and numerical values.
10. Program: Press this button to program a custom accompaniment rhythm.
11. Play: Press this button to playback a custom accompaniment rhythm or recorded song.
12. Record: Press this button to record a custom song.
13. Tone: Press this button and then use the number buttons or the + or – buttons to select a tone.
14. Rhythm: Press this button and then use the number buttons or the + or – buttons to select an accompaniment rhythm.
15. Numbers: Use these buttons to select an instrument, rhythm, song, or tempo.
16. Sync: Press the Sync button, and then play the keys in the lowest two octaves (corresponding to the chords/notes). The play-along feature starts immediately when playing a key, instead of having to press the Start/Stop button to start it.
17. Start/Stop: Press to start or stop an accompaniment rhythm.
18. Fill In: Press this button to have a temporary rhythm play during the accompaniment rhythm.
19. Single Chord: Press this button to enable the Single automatic chord feature. This feature will generate chords for the accompaniment rhythms based on the keys you play that are the second lowest F# key or lower on the keyboard. The available chords for this function are described in Operation > Accompaniment Rhythm. Press this button again or press the Chord Clear button to disable the chord function.
20. Fingered Chord: Press this button to enable the Fingered automatic chord feature. This feature will generate chords for the accompaniment rhythms based on the keys you play (the second lowest F# key or lower on the keyboard). The available chords for this function are described in Operation > Accompaniment Rhythm. Press this button again or press the Chord Clear button to disable the chord function.
21. Chord Clear: Press this button to turn the Single Chord/Fingered Chord feature off.
22. Sustain: Press this button to activate a sustain effect which simulates a sustain pedal when playing the keyboard. Press this button again to disable the sustain effect.
23. Vibrato: Press this button to activate a pulsating change to the pitch when playing the keyboard. Press this button again to disable to vibrato effect.
24. Dual: Press this button to layer two sounds together. The sound that you were using before pressing the Dual button will be used for one part of the layer. To select the other sound for the layer, enter a number for the sound or use the + and – buttons. Press the Dual button again to disable the dual-tone function.
25. Split: Press this button to split the keyboard into two zones. The sound that you were using before pressing the Split button will be applied to the left hand side of the keyboard. To select a sound for the right-hand side, enter a number for the sound or use the + and – buttons. Press the Split button again to disable the keyboard split.
26. Percussion: Press this button to play the built-in drum kit and percussion sounds using the keys. Press this

button again to disable this function.

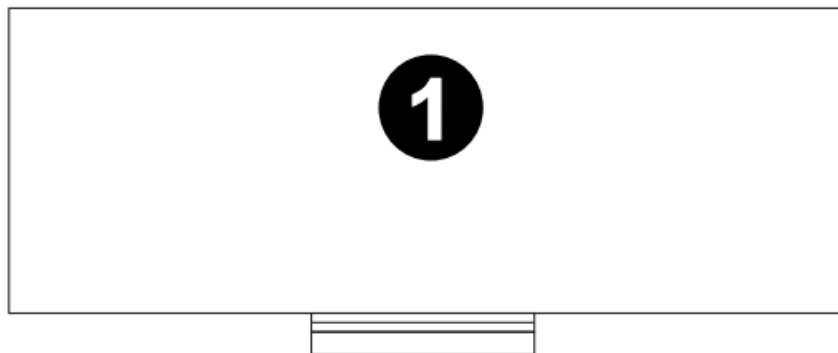
27. Intro/Ending: Press this button to play an intro and then start playback of an accompaniment rhythm. Press this button while the accompaniment rhythm is playing to play an outro and then stop playback of an accompaniment rhythm.
28. Beat: Press this button to start the metronome. Press this button again to change the time signature of this button or turn off the metronome.

Rear Panel



1. Mic: Connect the included microphone here to sing while playing the keyboard.
2. Phones: Connect the included headphones here to hear the keyboard and mute the internal speakers.
3. Power Input: Connect the included power adapter here.

Bottom Panel



1. Battery Compartment: Install 6 “AA” batteries here to power the keyboard if you are not using the power adapter.

Operation

Selecting a Tone

To select a tone, press Tone then use the number buttons or the + and – buttons.

To layer two sounds together, press the Dual button. The sound that you were using before pressing the Dual button will be used for one part of the layer. To select the other sound for the layer, enter a number for the sound

or use the + and – buttons. Press the Dual button again to disable the dual-tone function.

To split the keyboard into two zones, press the Split button. The sound that you were using before pressing the Split button will be applied to the left-hand side of the keyboard. To select a sound for the right-hand side, enter a number for the sound or use the + and – buttons.

Press the Split button again to disable the keyboard split.

Accompaniment Rhythm

To select an accompaniment rhythm, press Rhythm then use the number buttons or the + and – buttons.

To start or stop an accompaniment rhythm, press the Start/Stop button.

To have the accompaniment rhythm play a fill, press the Fill In button.

Press the Single Chord or Fingered Chord button to enable the automatic chord features.

These features will generate chords for the accompaniment rhythms based on the keys you play that are the second lowest F# key or lower on the keyboard. Press this button again or press the Chord Clear button to disable the chord function.

Single Chord:

When using the Single Chord feature you can use the abbreviated chord shapes shown below starting on any note to play major, minor, seventh, or minor seventh chords.



Fingered Chord:

When using the Single Chord feature you can use the full chord shapes shown below starting on any note to play major, minor, seventh, or minor seventh chords.



Recording Function

1. To record your playing, press the Record button to start recording a song.
2. During the recording process, press Play to stop recording. Press Play again to play the recorded song.
3. Press Play again to stop playback.

Note: The recorded song will be erased when recording is started again or when the keyboard is turned off.

When the memory is full, the screen will display “FUL”, and recording will automatically stop.

Rhythm Programming

To create custom accompaniment rhythms using the keyboard keys:

1. Press the Program button and start programming the rhythm by playing each note in the pattern, one at a time.
2. Press Play to stop programming and hear the programmed rhythm.
3. Press the Program button again to disable the programming function and erase the programming rhythm.

Note: The programmed rhythm will be erased when programming is performed again or if the keyboard is turned off.

Auto-power Off

After 5 minutes of inactivity, Melody 61 MKII will power off. If you press any button or key, it will turn back on.

Appendix

Tones

000–007 Piano	072–079 Flute	144–159 Synth Guitar
008–015 Mallet	080–087 Lead	160–199 Synth Orchestra
016–023 Organ	088–095 Pads	200–219 Synth Brass
024–031 Guitar	096–103 FX	220–239 Synth Reeds
032–039 Bass	104–111 Ethnic	240–245 Synth Electronic
040–047 Strings	112–119 Percussion	246–299 Synth World
048–055 String Ensemble	120–128 Pads	
056–063 Brass	129–133 Synth Percussion	
064–071 Clarinet	134–143 Synth Organ	

Rhythms

000–052 Pop/Dance	128–163 Soul/R&B	243–299 Ballad
053–062 Jazz	164–179 Rock	
063–118 Latin/World	180–228 Swing/Bossa	
119–127 Waltz	229–242 Country/Western	

Technical Specifications

Power	6 “AA” batteries or included power adapter (9V DC, 500 mA)
Dimensions	12.4” x 37.4” x 4.1” 315 x 948 x 105 mm
Weight	11.0 lbs. 5.0 kg

Specifications are subject to change without notice.


Trademarks & Licenses

Alesis is a trademark of inMusic Brands, Inc., registered in the U.S. and other countries.
All other product or company names are trademarks or registered trademarks of their respective owners.

alesis.com

ALESIS®

Documents / Resources

	<p>ALESIS MELODY 61 MKII 61 Key Portable Keyboard with Built In Speakers [pdf] User Guide</p> <p>MELODY 61 MKII, 61 Key Portable Keyboard with Built In Speakers, MELODY 61 MKII 61 Key Portable Keyboard, 61 Key Portable Keyboard, Portable Keyboard, Keyboard</p>
---	--

References

- [Alesis](#)
- [Support : Alesis](#)