



alerta AAF400 Track Patch and Wedge User Guide

[Home](#) » [alerta](#) » alerta AAF400 Track Patch and Wedge User Guide 

alerta AAF400 Track Patch and Wedge



Patch



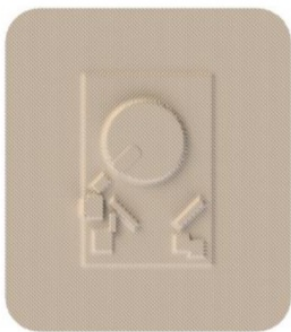
Wedge

Contents

- 1 What's in the Box
- 2 Using the Alerta System
- 3 Getting Started
- 4 Turning on the Patch
- 5 Turning on the Wedge
 - 5.1 Applying the Patch to the Body (back)
- 6 Changing the Patch Cover
 - 6.1 Wedge Indicator: Reset
 - 6.2 Wedge Indicator: Signal Strength
 - 6.3 Wedge Indicator: Out of Range
 - 6.4 Special Condition
 - 6.5 Wedge Indicator: Battery Level
 - 6.6 Wedge Indicator: Change Patch
- 7 For Best Results
- 8 Safety
- 9 Recycling
- 10 Additional Product Information
- 11 Documents / Resources
- 12 Related Posts

What's in the Box

- Alerta Wedge
- Alerta Patches
- Alerta Patch Cover
- Getting Started Card
- User Guide
- Safety & Warranty Information
- Spare Wedge Battery (if purchased)



Patch



Wedge

Using the Alerta System

The system is designed to continuously monitor a person wearing a Patch, when the Patch and Wedge are paired. The Wedge can be held, carried, or placed in a central location.

The Patch and Wedge communicate with each other when they are up to 65 to 90 feet apart, depending on the environment. Beyond this distance, the Wedge will alarm and flash. The monitoring proximity can be adjusted by the caregiver, by placing the Wedge closer to or farther from the Patch. The shorter the distance, the stronger the

signal, indicated by the SIGNAL indicator on the Wedge.

The system operates whether the care recipient wearing the Patch is standing, sitting, or lying, so it is useful for normal daily living activities.

Getting Started

1. Open the box and remove the tray.
2. Remove one Patch from the container, return container to the tray.
3. Remove the Wedge and place it **next to the Patch**.

Turning on the Patch

1. Locate the push-button on the front of the patch as indicated by the arrow.
2. Push and hold the button, until the red- light flashes.
3. **Watch the red light** it will flash within six (6) seconds of releasing the Patch pushbutton.



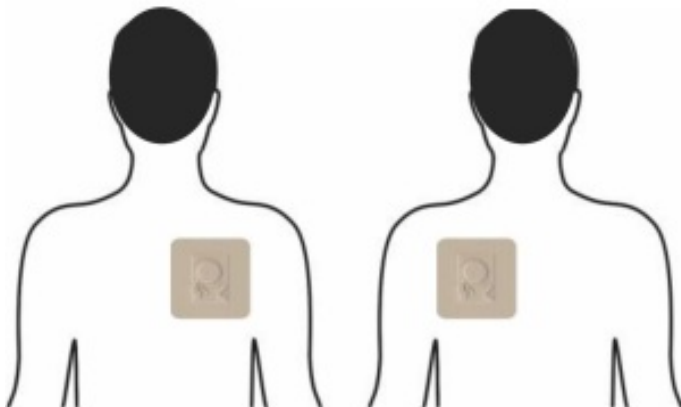
Turning on the Wedge

1. Press the Wedge RESET button from the top. The OUT OF RANGE indicator will flash.
2. Watch the Wedge SIGNAL indicator it will flash within six (6) seconds indicating that the **Wedge and Patch are paired**.



Applying the Patch to the Body (back)

1. Remove the covering from the adhesive lining on the perimeter of the underside of the Patch.
2. Place the Patch on the upperback in one of the shaded areas, alternating each week.



Changing the Patch Cover

After ten days, it is recommended to change the cover of the Patch (brown material). Simply pull off the brown cover from the rigid white device. Then, peel-off the adhesive backing from a new Patch cover and apply it to the center of the foam side of the device. The woven white side is exposed and is in contact with the skin.

Wedge Indicator: Reset

The Wedge RESET button (i) turns-on the device, so that it can be paired with the Patch; and (ii) stops an alarm. To reset the Wedge, press and hold the RESET until the OUT OF RANGE light flashes (for approximately ten seconds). The Wedge lights will flash and be ready to be paired to a Patch.

Wedge Indicator: Signal Strength

The SIGNAL indicator shows the degree of strength of the Patch to Wedge transmission. The signal will be stronger when the Patch and Wedge are closer to each other. The SIGNAL indicator flashes every six seconds, when the Patch and Wedge are communicating with each other.

Wedge Indicator: Out of Range

When the Patch and Wedge are out of range, an alarm will sound and the OUT OF RANGE light will flash. Typically, this means that person wearing the Patch is more than 75 to 90 feet the Wedge. This alarm will sound until the RESET button is pushed, or until 2.5 minutes have elapsed. When the care recipient wearing the Patch comes back into proximity of the Wedge, the alarm will stop and normal monitoring will resume. Occasionally, the Wedge will alarm because of an interference in local environment; this would be a “false positive alarm,” and the Wedge will reset automatically.

Special Condition

A special condition exists when an active Patch and Wedge have been separated for more than 13 minutes. In this case, the Wedge will go to sleep and will have to be reset and the Patch paired.

Wedge Indicator: Battery Level

The BATTERY LEVEL indicator will light-up when the Wedge battery must be changed; this should be done so immediately. See www.alertafamily.com for battery change instructions.

Wedge Indicator: Change Patch

At the end of thirty days, the Patch needs to be changed. The CHANGE PATCH indicator will flash, and a short chirp will sound. The user should push and **hold** the Wedge RESET button until the **OUT OF RANGE, CHANGE PATCH**, and **BATTERY LEVEL** lights flash and the wedge chirps. then follow the instructions for changing the Patch.

For Best Results

- It is recommended that the Patch be applied to the body in the morning.
- The Patch should be applied to the area depicted in the drawing after having cleaned the skin and removed all hair.
- Place the Patch on a flat area near a shoulder blade. It should not overlap the shoulder blade or the spine.
- When applying the Patch, push it down at the center and smooth the edges to adhere the patch uniformly

Safety

Alerta uses 3M medical-grade foam tape and adhesives tested for longterm use. However, the Patch may contribute to skin irritation for some users. Be sure the Patch placement area is **clean and free of hair**.

Recycling

The Patch battery cannot be replaced by the user. The Patch must be returned to Track Patch proper disposal and recycling. If the Patch is not returned, it must be disposed of in compliance with applicable laws and regulations. Track Patch uses recycled components in the manufacturing of Alerta.

Additional Product Information

Model Number: TPGSK001.

Frequency band: 915 MHz max RF

Electrical Rating: 3.0 V Battery Powered

Batteries: Wedge has two AA-size

lithium cells; Patch has one lithium coin cell.
Operating temperature: 0° to 35°C.

This device (FCC ID 2AUWFTPPW0001) complies with Part 15 of the FCC Rules and its operation is subject to two conditions:

- this device may not cause harmful interference;
- this device must accept any interference received, including interference that may cause undesired operation.


Changes or modifications not expressly approved by the party responsible for compliance could void the user’s authority to operate the system.

The company disposes of returned batteries in accordance with applicable laws and regulations.

Track Patch 1 Corporation 134 Battlefield Blvd N Chesapeake VA 23320
+1 (833) 443-5799
www.alertafamily.com

User Guide

Documents / Resources

	alerta AAF400 Track Patch and Wedge [pdf] User Guide AAF400, Track Patch and Wedge
---	---