



Alecto SMART-PLUG20 Smart WiFi Plug Adapter Instruction Manual

[Home](#) » [Alecto](#) » Alecto SMART-PLUG20 Smart WiFi Plug Adapter Instruction Manual 

Contents

- [1 Alecto SMART-PLUG20 Smart WiFi Plug Adapter](#)
- [2 Product Information](#)
- [3 Product Usage Instructions](#)
- [4 DOWNLOAD APP](#)
- [5 INSTRUCTIONS](#)
- [6 PUT DEVICE IN REGISTER MODE](#)
- [7 SPECIFICATIONS](#)
- [8 DECLARATION OF CONFORMITY](#)
- [9 Documents / Resources](#)



Alecto SMART-PLUG20 Smart WiFi Plug Adapter



Product Information

- Product Name: SMART-PLUG20
- Max. Current: 16A
- Max. Load: 3680W
- Standby Power: [missing information]

Product Usage Instructions

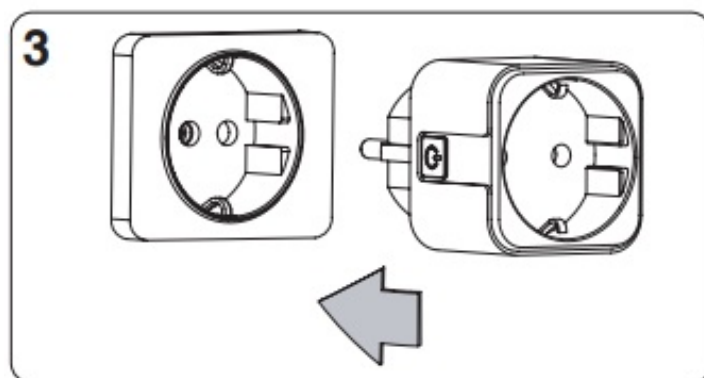
1. Download the SMART LIFE app on your smartphone or tablet.
2. Add the SMART-PLUG to the app by following the instructions provided in the app.
3. Put the device in register mode.
4. [Missing information]
5. Hold the device for 10 seconds.
6. [Missing information]
7. [Missing information]
8. [Missing information]
9. Open the SMART LIFE app on your smartphone or tablet and confirm that the device is flashing twice per second.
10. If the device is not flashing as described in step 8, repeat step 5.
11. [Missing information]
12. [Missing information]
13. [Missing information]

Note: Make sure that the SMART-PLUG20 is within range of the router during the registration process. Keep the product away from liquids and humidity.

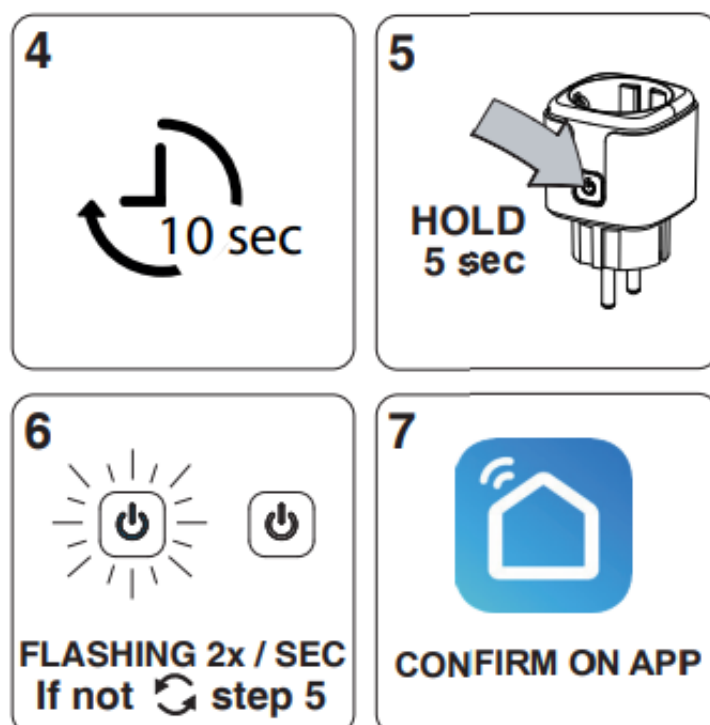
DOWNLOAD APP

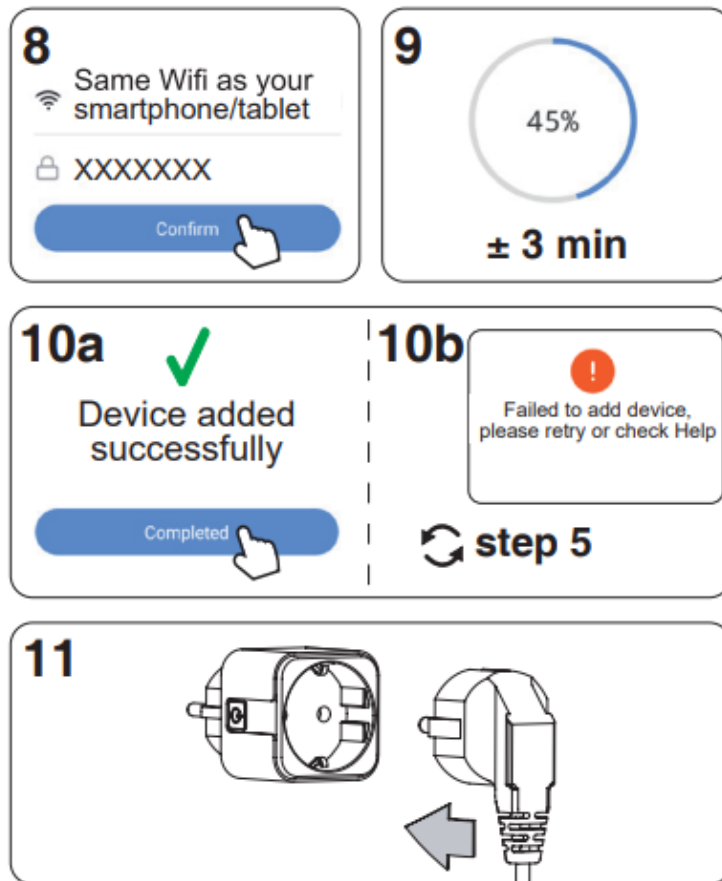


INSTRUCTIONS



PUT DEVICE IN REGISTER MODE





ATTENTION!

- Make sure that the SMART-PLUG20 is within range of the router during the registration process.
- Keep away from liquids and humidity.

SPECIFICATIONS

- Max. current: 16A
- Max. load: 3680W
- Standby power: <0.5 W
- Voltage: 220-240VAC
- Frequency: 50/60 Hz
- Operating temperature: 5°C ~ 45°C
- Storage temperature: -10°C ~ 60°C
- Wireless RF mode frequency band: 2412-2472 MHz
- Wireless communication protocol: WIFI 802.11 b/g/n
- Maximum transmitted power: 16.7 dBm
- Relative humidity: <60%
- Dimensions: 84x50x50 mm

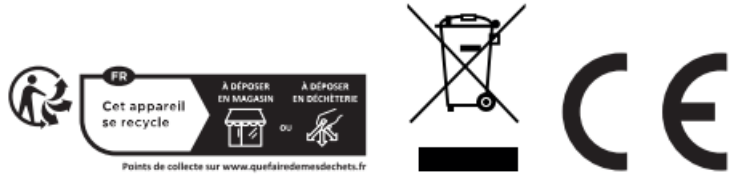
DECLARATION OF CONFORMITY

Hereby, Commaxx declares that the radio equipment type Alecto SMARTPLUG20 is in compliance with directive 2014/53/EU.


The full text of the EU declaration of conformity is available at the following internet address:

<http://DOC.hesdo.com/SMART-PLUG20-DOC.pdf>

Commaxx B.V.
Wiebachstraat 37
6466NG Kerkrade
The Netherlands



Documents / Resources

	<p>Alecto SMART-PLUG20 Smart WiFi Plug Adapter [pdf] Instruction Manual</p> <p>SMART-PLUG20 Smart WiFi Plug Adapter, SMART-PLUG20, Smart WiFi Plug Adapter, WiFi Plug Adapter, Plug Adapter, Adapter</p>
---	--