



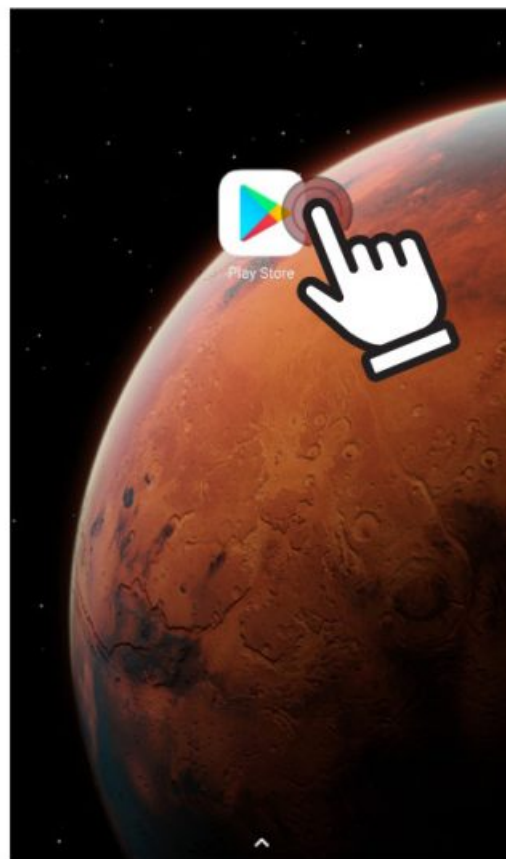
Alecto DVC136IP Camera with Android App User Guide

[Home](#) » [Alecto](#) » Alecto DVC136IP Camera with Android App User Guide 



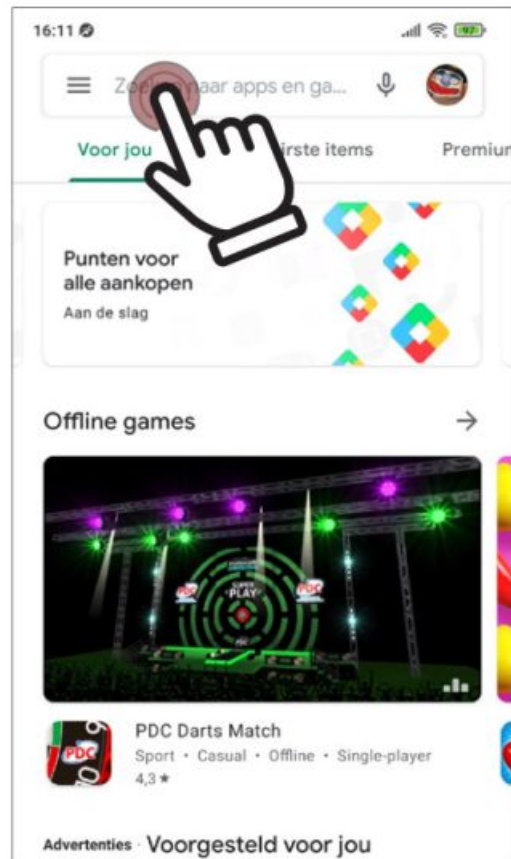
Quick start guide
DVC136IP camera with
Android App

1



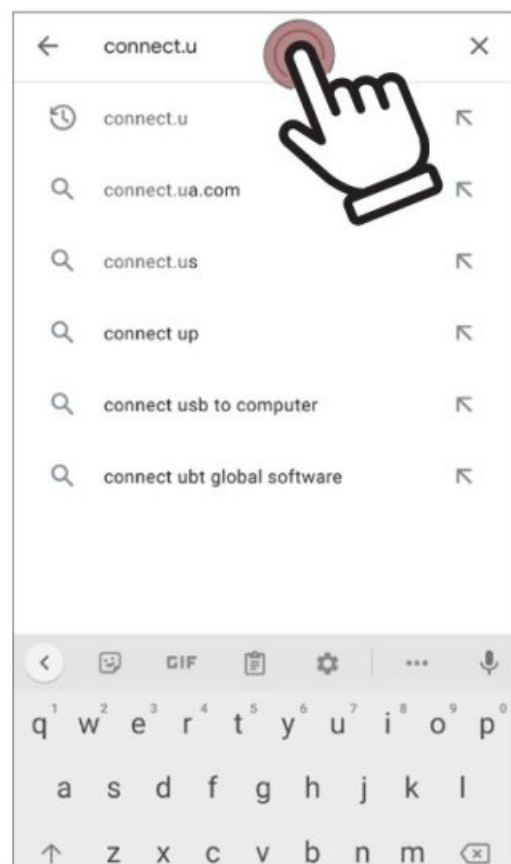
Go to the Google Play Store with your smartphone.

2



Tap at the bar in the top of the screen and type "Connect.U"

3



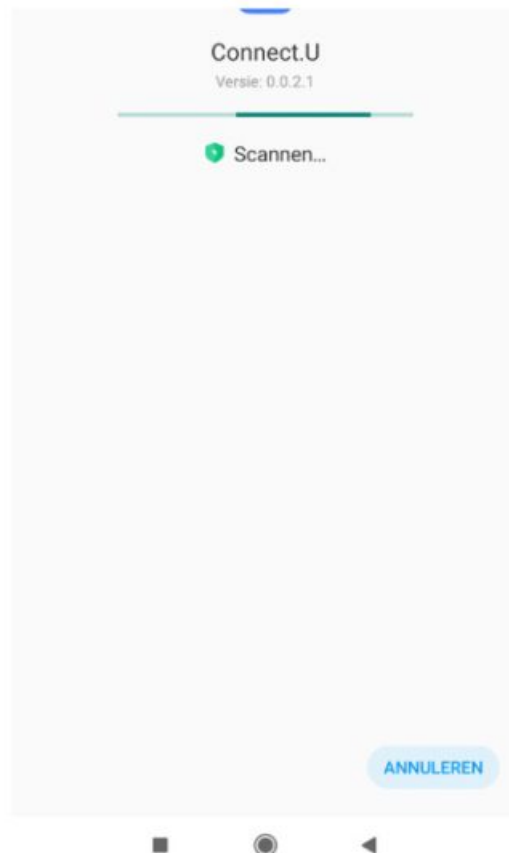
Choose the Connect.U application.

4



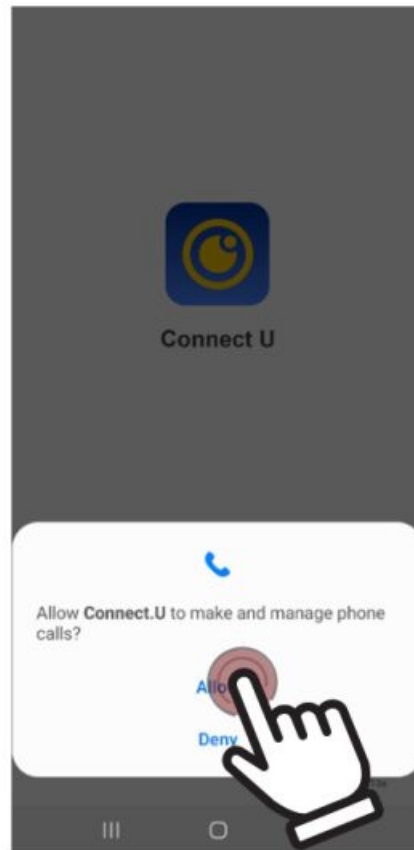
Tap **Install**.

5



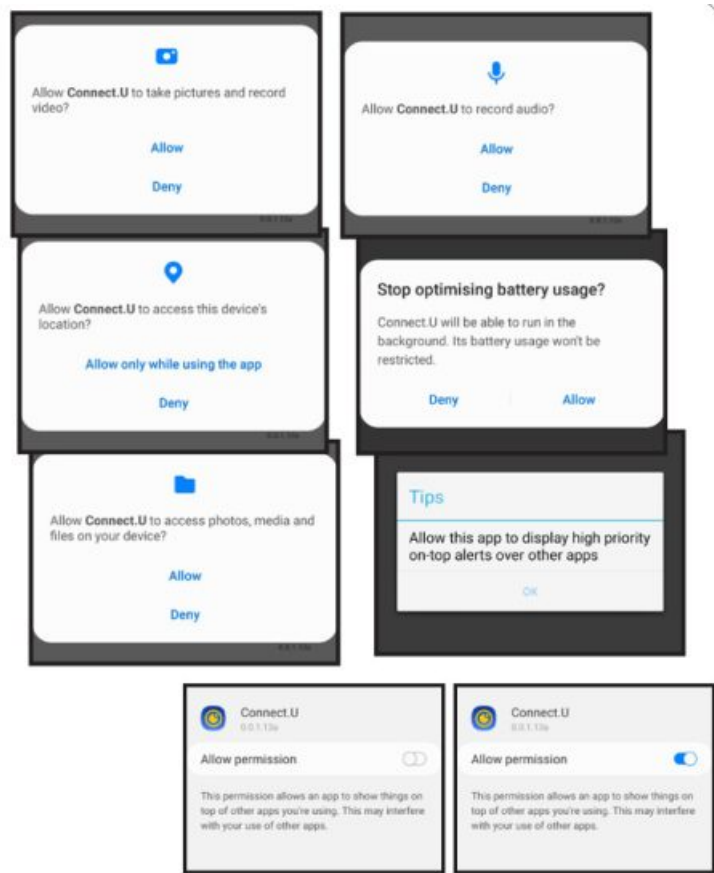
Tap **Open**.

6

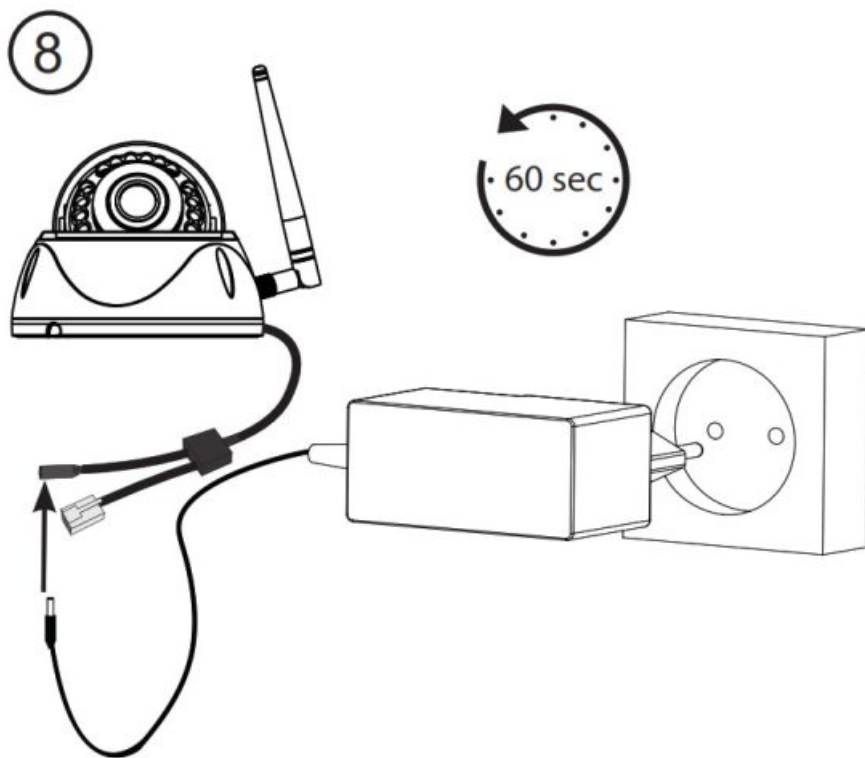


Allow Connect.U to make and manage phone calls? Tap **Allow**.

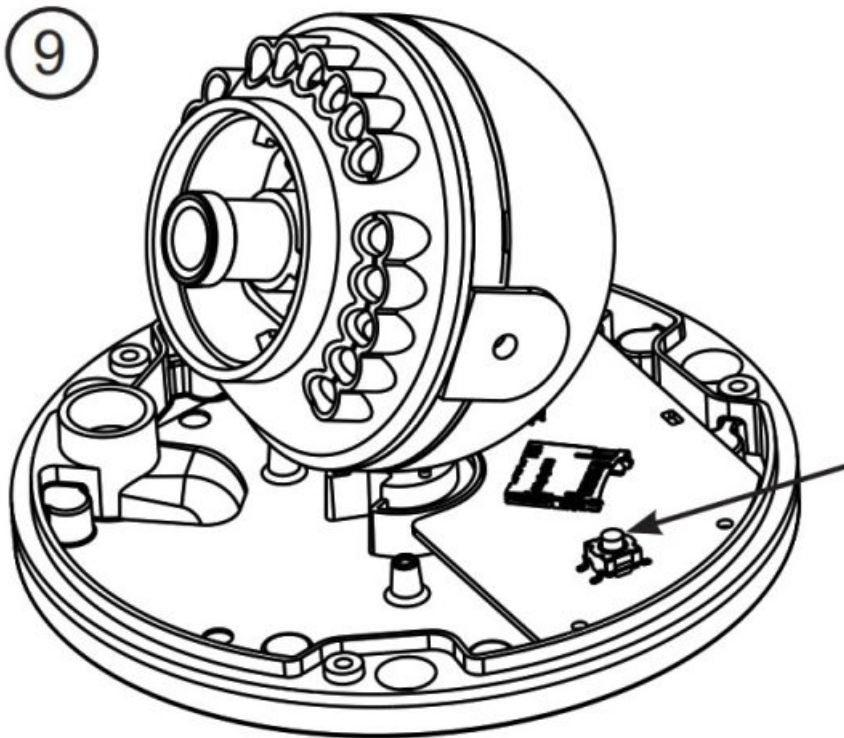
7



Tap for all windows **Allow**.

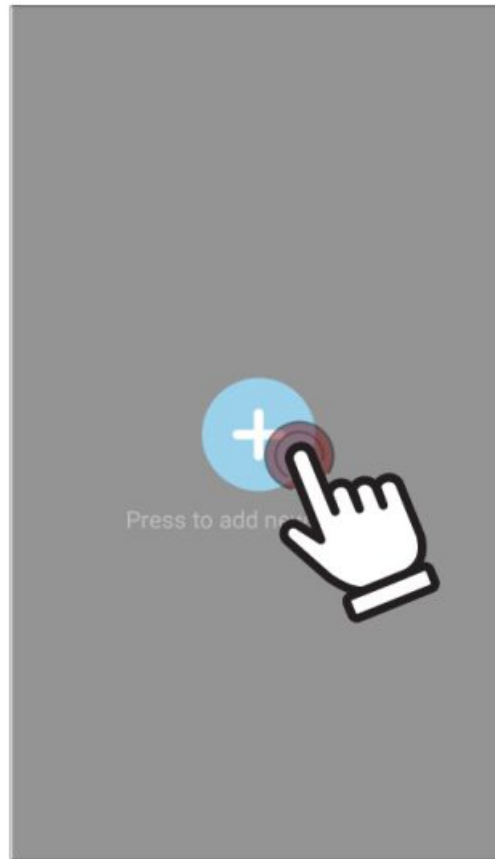


Open the camera and connect the camera to the power supply, and wait at least 60 seconds.



Reset the camera by pressing the reset button for 6 seconds. Indication LED will blink.

10



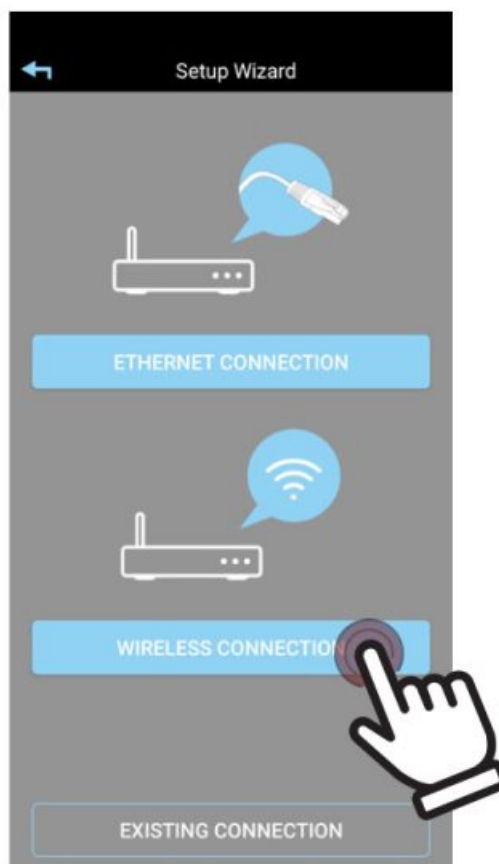
Tap +. **Press to add new system.**

11



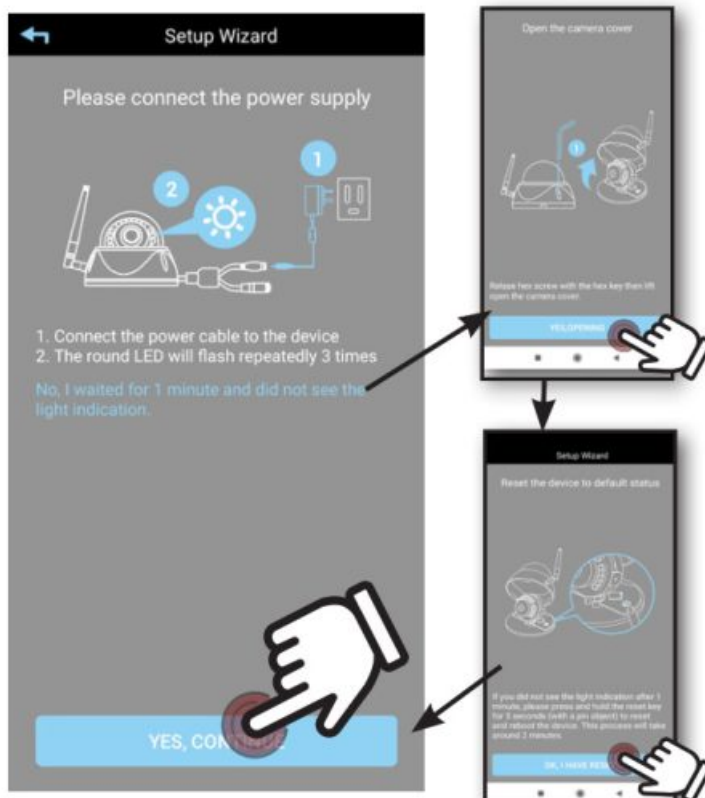
Scan QR-code

12



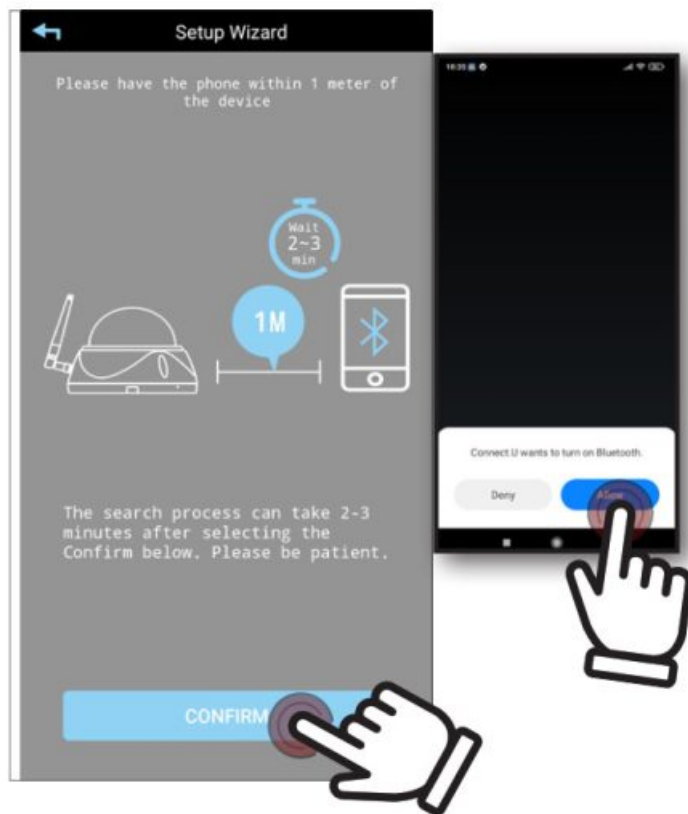
Tap on **Wireless Connection** for WiFi connection. If this camera is already logged on to a device, select **Existing Connection**.

13



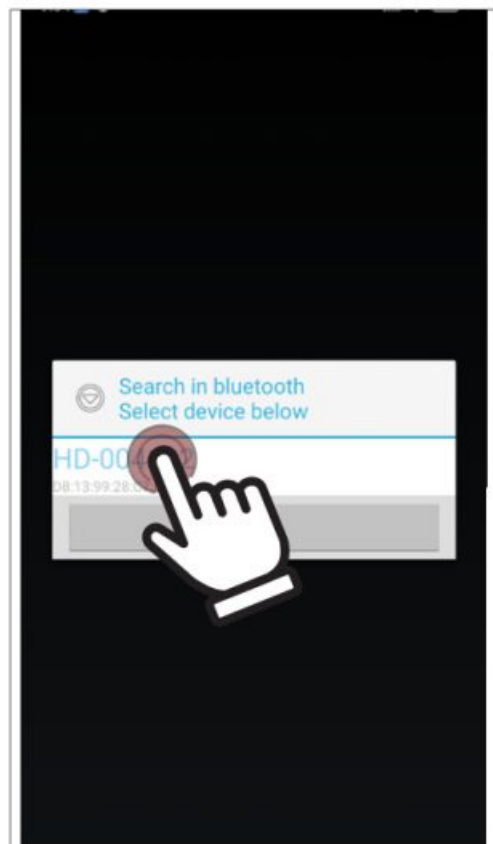
Tap on **Yes, continue**. No blinking LED after one minute, tap the link for more information and follow the prompts, then tap **OK, I have reset**.

14



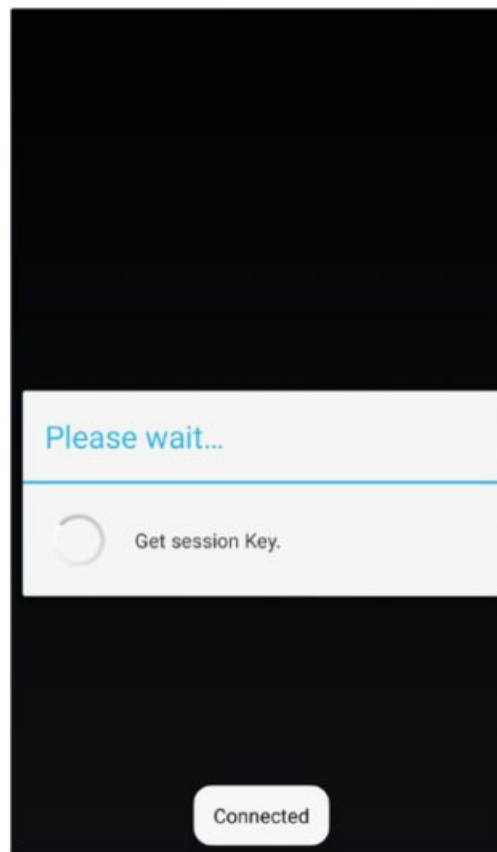
Follow the instructions and tap on **Confirm**. Turns Bluetooth on when it is off.

15



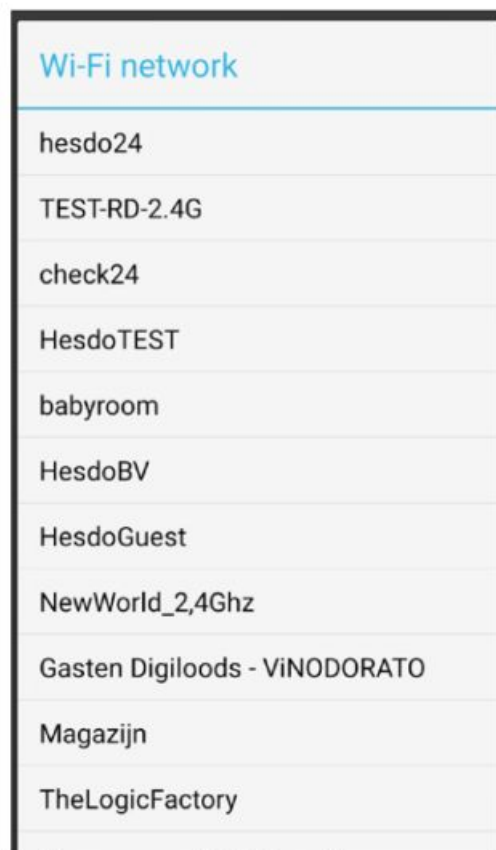
Camera is found. Tap camera number.

16



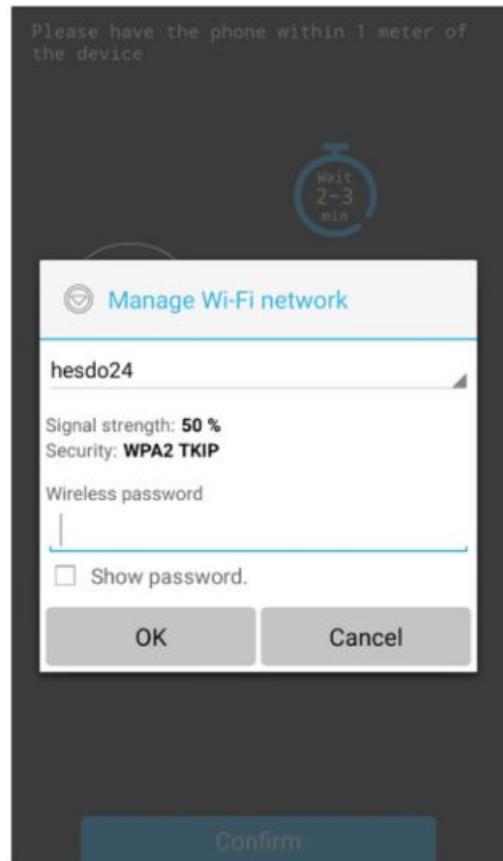
Camera will automatically connect.

17



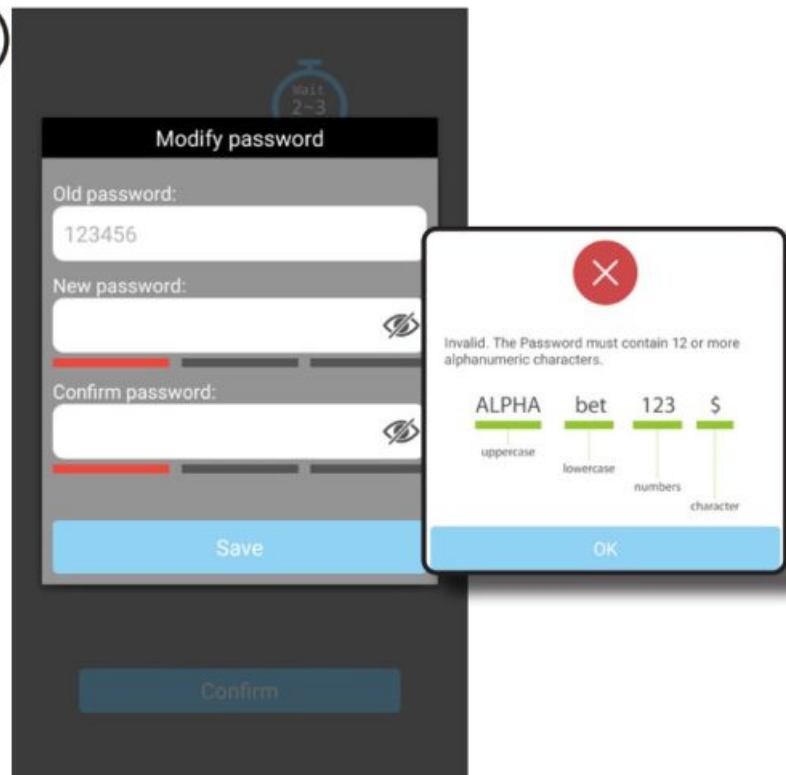
Select the access point of the correct router.

18



Enter the correct WIFI password.

19



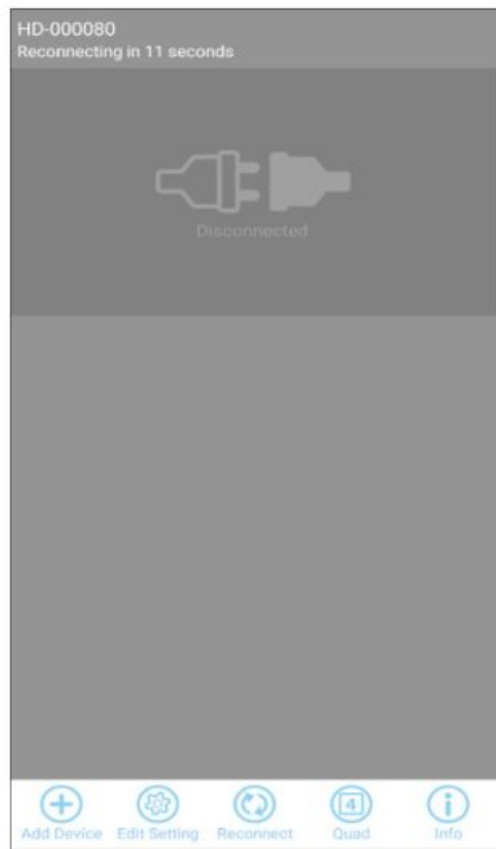
Change camera password and must consist of password policy (see inset). >12 digits, upper case, lower case, number and only characters !#\$%* .

20



Enter the same password twice according to the password policy and tap **Save**.

21



Camera reboot.

22



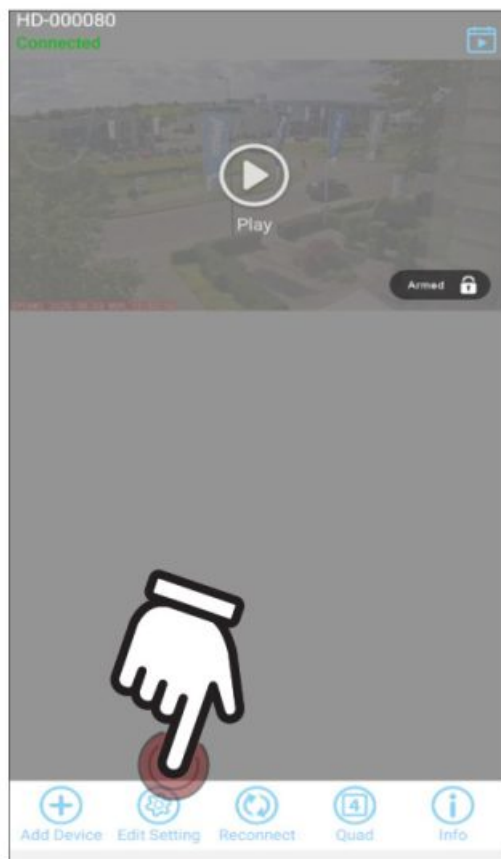
Congratulations! The installation is completed.

Contents

- [1 ADVANCED SETTINGS](#)
- [2 Documents / Resources](#)
- [3 Related Posts](#)

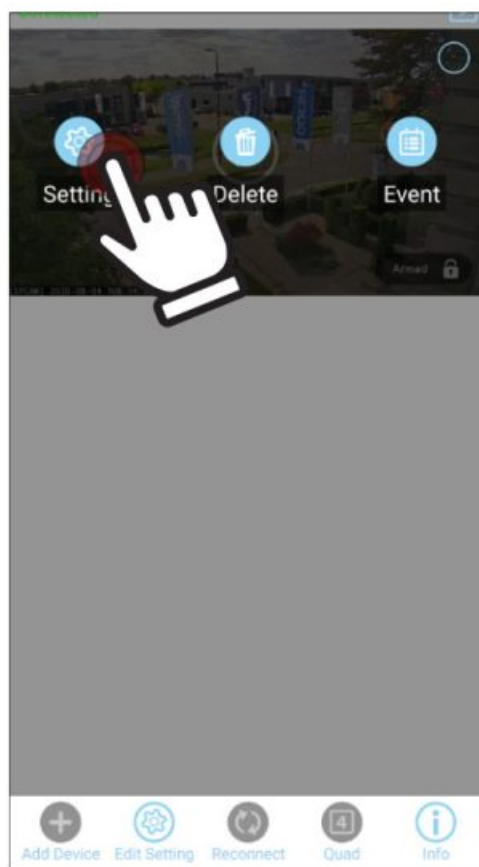
ADVANCED SETTINGS

23



Touch **Edit Setting** for more settings

24



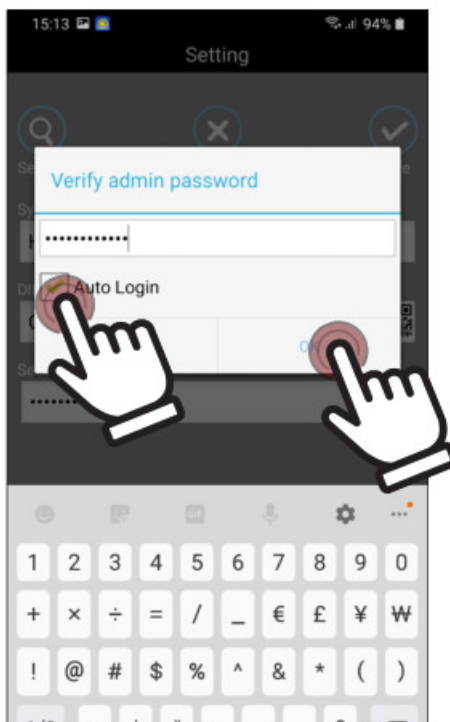
Tap **Setting**.

25



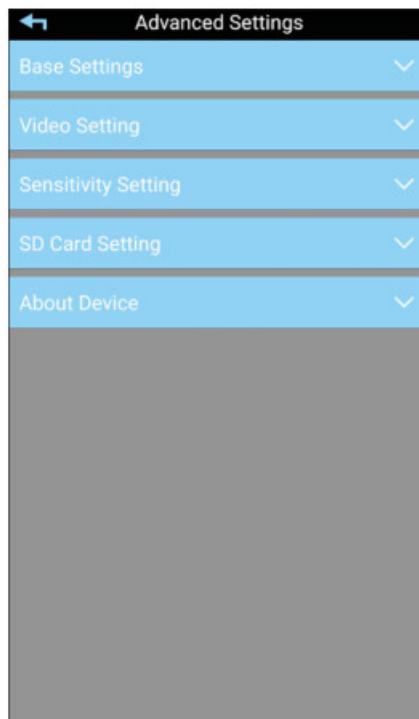
Tap **Advanced**.

26



Enter Camera password and check **Auto login**.

27



Advanced settings are available.



Documents / Resources



[Alecto DVC136IP Camera with Android App](#) [pdf] User Guide
DVC136IP, Camera with Android App