



ALCAD MVC-141 Videodoor Entry System Monitor User Manual

[Home](#) » [ALCAD](#) » **ALCAD MVC-141 Videodoor Entry System Monitor User Manual** 

*ALCAD MVC-141 Videodoor Entry System Monitor
User Manual*

2-WIRE VIDEODOOR ENTRY SYSTEMS



VIDEODOOR ENTRY SYSTEM MONITOR

Contents

- [1 MECHANICAL ASSEMBLY](#)
- [2 CONNECTING INSTRUCTIONS](#)
- [3 SEVERAL MONITORS IN THE SAME APARTMENT](#)
- [4 PROGRAMMING INSTRUCTIONS](#)
- [5 TECHNICAL CHARACTERISTICS](#)
- [6 Documents / Resources](#)
 - [6.1 References](#)
- [7 Related Posts](#)

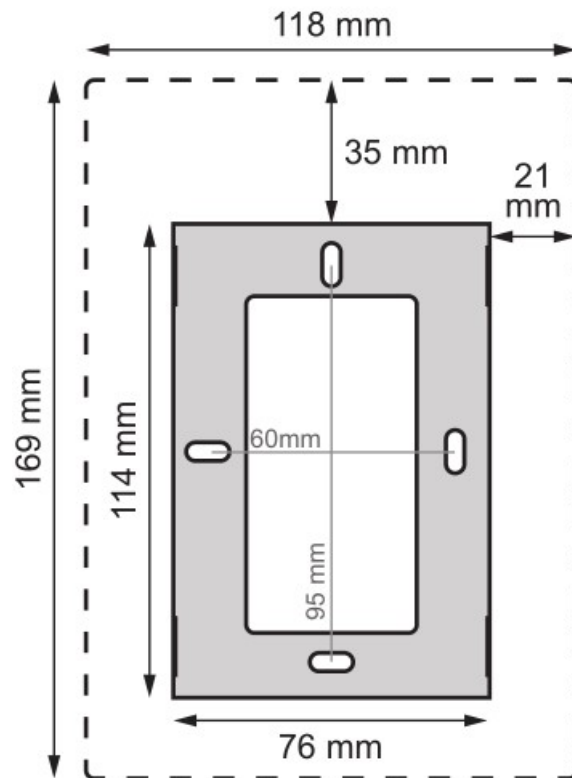
MECHANICAL ASSEMBLY

Recommendations

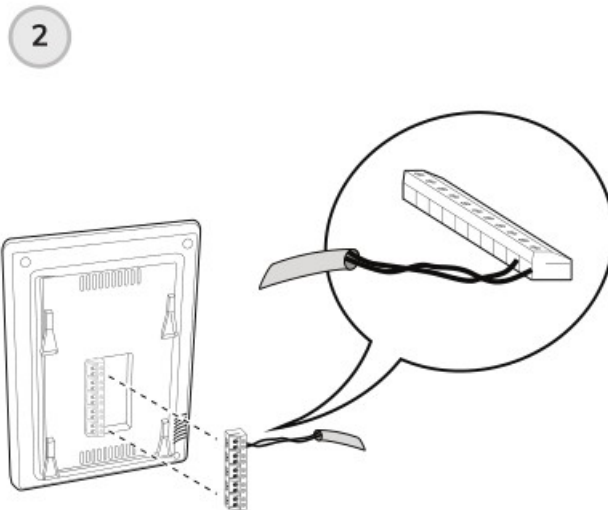
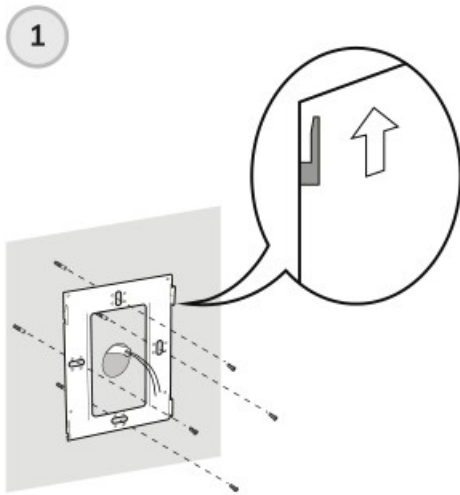
When deciding where to position the connection support, choose an area of Wall which is smooth, even and hard.

Bear in mind the dimensions of the monitor, ensuring that you leave space enough on the right-hand side of the bracket (>70 mm) to be able to Access the controls on the monitor. Avoid places where there are sources of direct light, thereby preventing undesired or steam, which could reduce the operational life of the equipment.

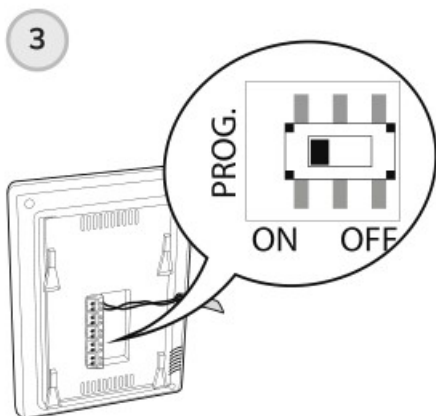
Monitor and bracket size



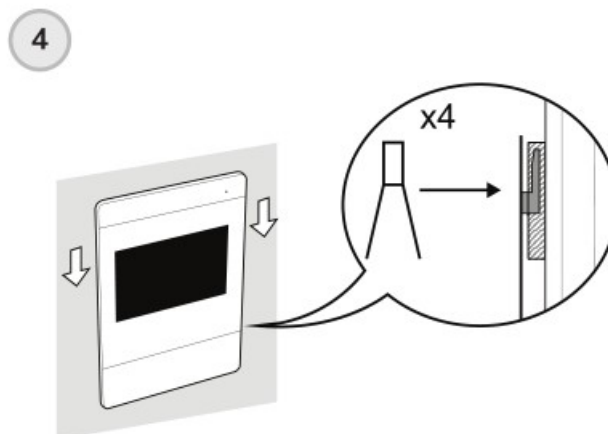
Installing instructions



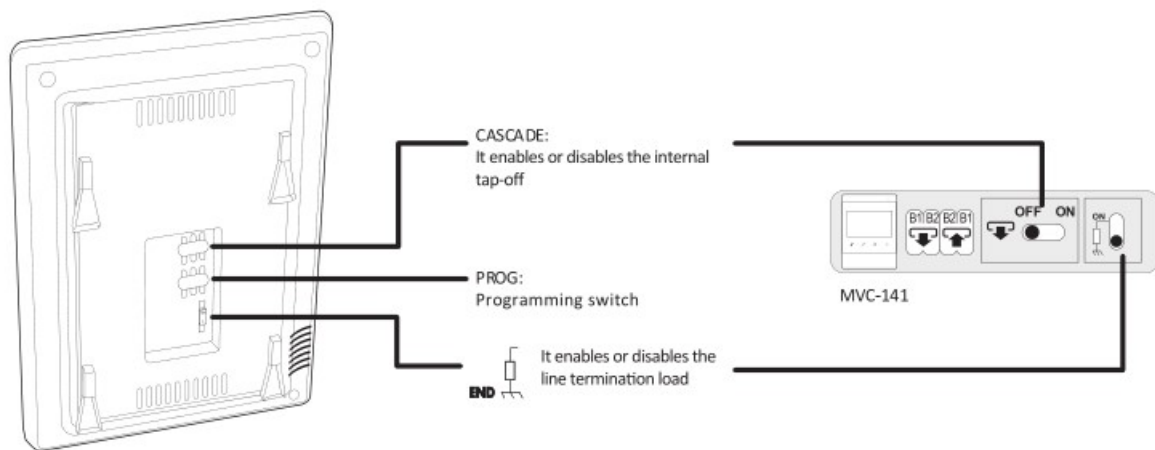
See: "CONNECTING INSTRUCTIONS" Page 12.



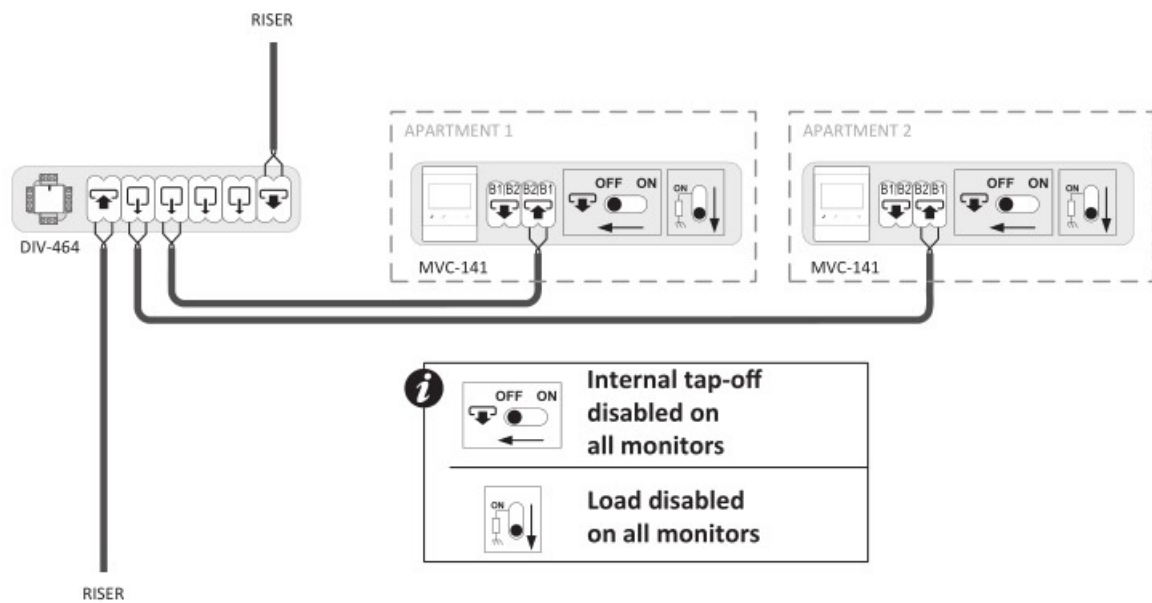
See: "PROGRAMMING INSTRUCTIONS" Page 15.



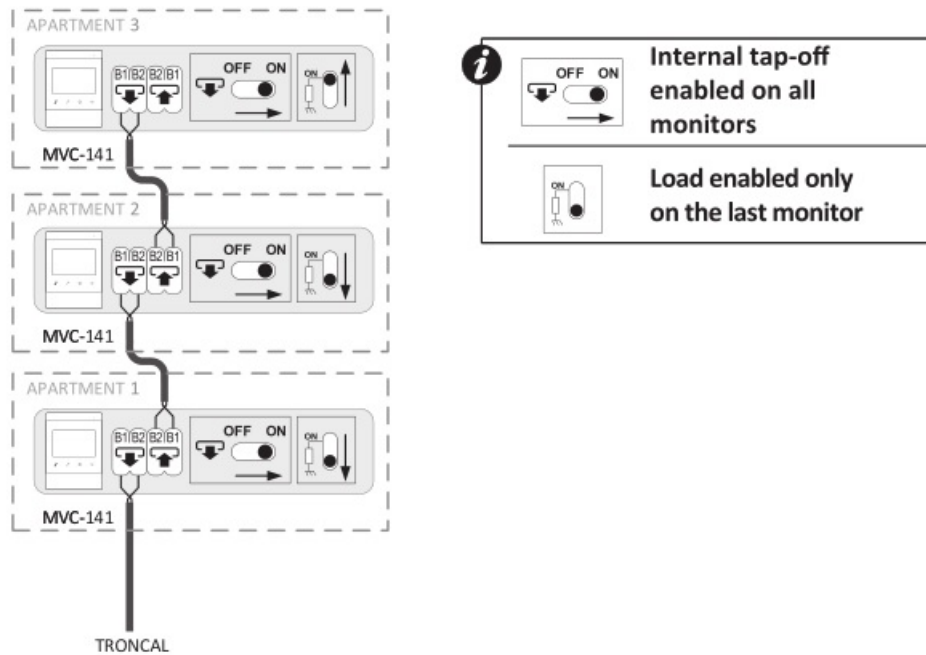
CONNECTING INSTRUCTIONS



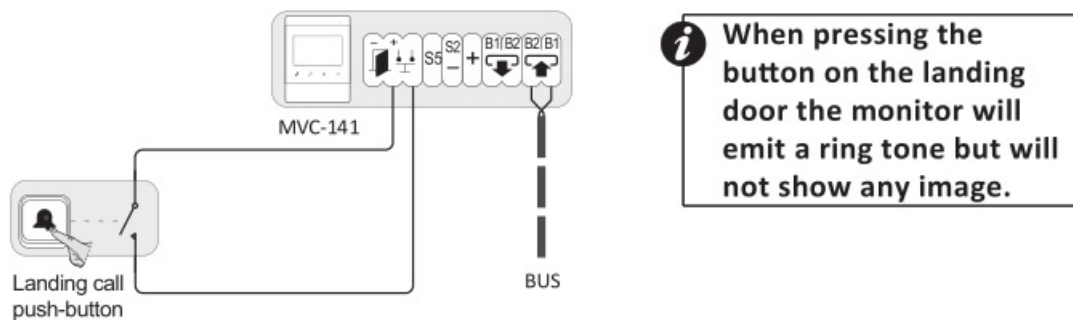
BUS connection via tap-offs



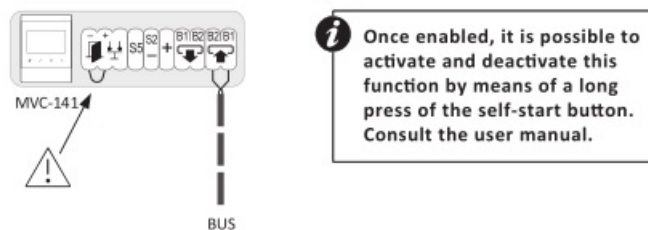
BUS connection cascading apartments



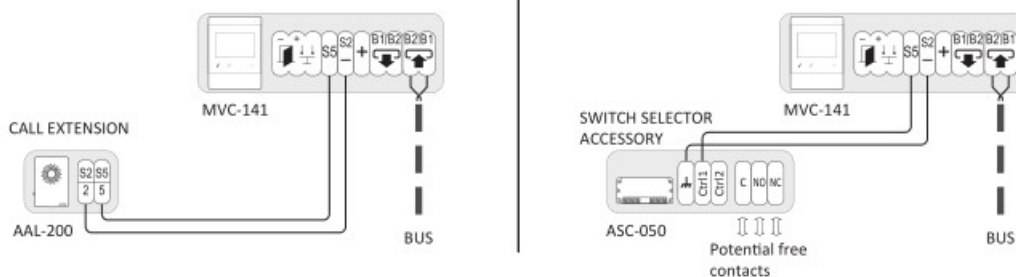
Reception of call landing on the monitor



Enable automatic door opening function when receiving call

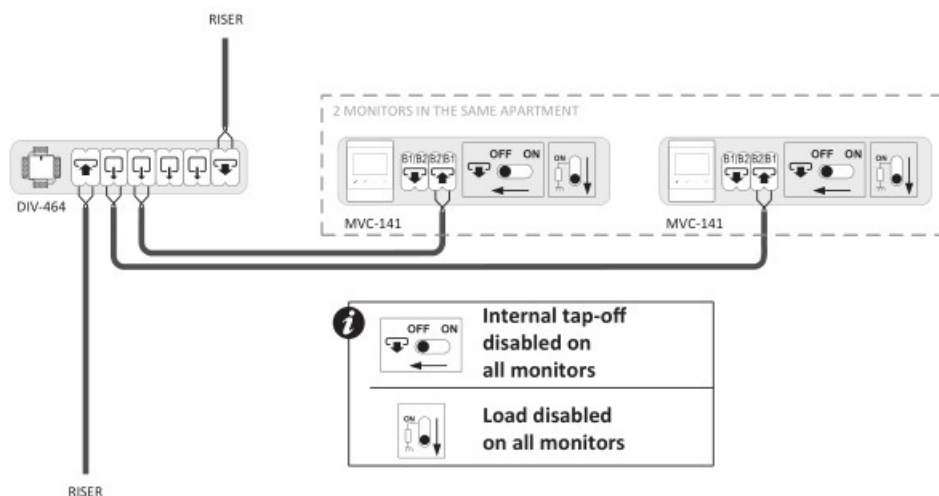


Call extension or selector-switch accessory (Relay) activated when receiving call



SEVERAL MONITORS IN THE SAME APARTMENT

1. Connect all monitors in the house.
2. Program the monitors one by one and with the same button / code, see “Programming instructions” Page 15
3. The monitor programmed in the first place will be the main monitor.



Functioning

Received the call in the apartment, it sounds on all monitors. The visitor's image apartment. Possibility of displaying the image on the other monitors without having to pick up the receiver, by pressing the auto-switch on button . You can answer the call from any of the monitors by pressing the communication button. Once the communication is established from one of the monitors, it will not be possible to pick up from any other, keeping the secret of the communication at all times.

PROGRAMMING INSTRUCTIONS

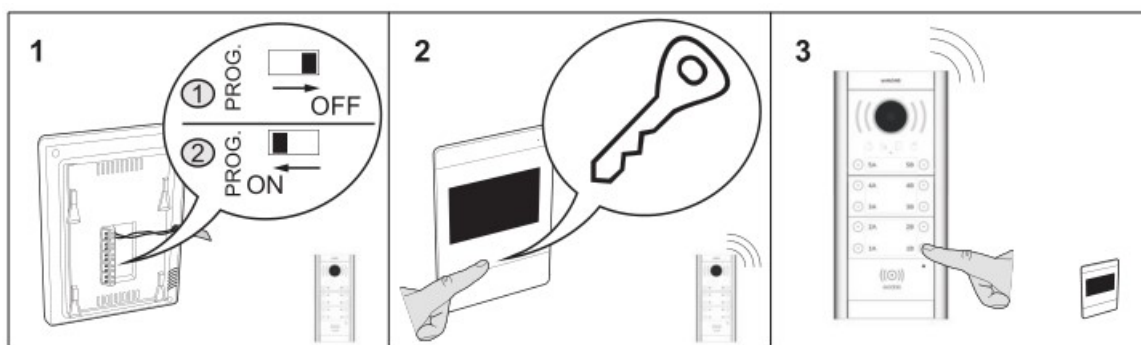
The programming of the monitor must be done from the main entrance panel of the system (See the corresponding installation manual).

The button / programming code is stored in the monitor. If the monitor is replaced, do not forget to program it.

For installations with several devices (telephones or monitors) in the same home, program all the devices one by one and with the same button / code.

Programming steps

1. Move the PROG switch to the OFF position; Return the switch to the ON position.
2. Press the door open button . The audio will be activated between the monitor and the main entrance panel.
3. Located on the main street panel, make the call to the apartment where the monitor to be programmed is located. The entrance panel will emit a confirmation beep, the monitor has been programmed.



Note: Once the monitor is programmed, make sure that the PROG switch is in the ON position.

Note: Maximum time of 1 minute between steps 1,2 and 3. After the maximum time you must start programming from step 1.

TECHNICAL CHARACTERISTICS

MONITOR ENARA	
REFERENCE	9630087 MVC-141
System	2 wires
Screen	TFT Colour 4,3"
On-screen menu	Yes
Communication	Free hands
Call volume regulation	"Do not disturb"; 0-8
Buttons for auxiliary functions	1
Capture Photo/Video	Yes/Yes
WiFi	No
Input Voltage	Through the 2-wires BUS (12,5 ... 18Vdc)
Consumption (mA)	40 mA (rest); 375 mA (active)
Work temperature	+5... +55 °C
Connections	Pluggable terminals
Integrated load and bypass	Yes, configurable by micro-switches
Installation	Surface mount
Proportions	120mm X 168mm X 26mm

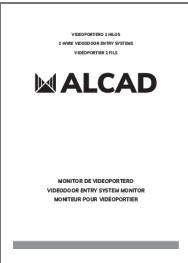
The illustrations in this document are for reference only and may not correspond to the product in every detail.



www.alcadelectronics.com

ALCAD Electronics, S.L.
Pol. Ind. Arreche-Ugalde, 1
Apdo. 455 | 20305 IRUN – Spain
Tel. (+34) 943 63 96 60
info@alcad.net

Documents / Resources

 The thumbnail shows the front cover of the user manual. It features the ALCAD logo at the top, followed by the product name in multiple languages: "VIDEODOOR ENTRY SYSTEM MONITOR" in English, "MONITOR DE VIDEOPUERTA" in Spanish, "VIDEODOOR ENTRY SYSTEM MONITOR" in French, and "MONITEUR POUR VIDEOPUERTA" in Dutch. The product name "MVC-141 Videodoor Entry System Monitor" is also visible.	<p>ALCAD MVC-141 Videodoor Entry System Monitor [pdf] User Manual MVC-141 Videodoor Entry System Monitor, MVC-141, Videodoor Entry System Monitor, Entry System Monitor, System Monitor, Monitor</p>
---	--

References

- [ALCAD ELECTRONICS | ALCAD Home, ALCAD Facility](#)

Manuals+.